

ROTARIANS AGAINST MALARIA



LONG LASTING INSECTICIDAL NET DISTRIBUTION REPORT

AUTONOMOUS REGION OF BOUGAINVILLE North, Central and South Bougainville

Carried Out In Conjunction With The Provincial Government And Church
Health Services Of The Autonomous Region Of Bougainville

With Support From The Global Fund

1st October 2022 to 30th March 2023



Table of Contents

Executive Summary	3
Background.....	4
Schedule	7
Methodology.....	7
Results	11
Conclusions.....	13
Acknowledgements	15
Appendix One – History Of LLIN Distribution In PNG	15
Appendix Two – Malaria In ARoB Compared With Other Provinces	20
Appendix Three - Malaria By Altitude	22
Appendix Four – Other Photographs	23
Annex One	Detailed Distribution Data For North Bougainville
Annex Two	Detailed Distribution Data For Central Bougainville
Annex Three	Detailed Distribution Data For South Bougainville

Executive Summary

The Autonomous Region of Bougainville (ARoB) is comprised of one large island and a number of smaller islands in the Coral Sea east of the mainland of Papua New Guinea (PNG). While there are mountains that rise above 2000m, the majority (87%) of the population live on the coastal areas below 400m where malaria is endemic with only 0.4% living between 1200-1600m where *Plasmodium falciparum* is generally absent or epidemic in nature. For practical purposes therefore, the whole population of ARoB is exposed to malaria. About 70% of the population of ARoB are accessible by road and they all live on the main island. For the rest of the population, they can only be reached by boat with about 17% of the population living in remote areas where trekking is also required to reach them.

The family level survey and distribution of Long-Lasting Insecticidal Nets (LLINs) was carried out in ARoB between 1st October 2022 to 30th March 2022. The distribution was supposed to have been completed in 2022 but due to security issues in South Bougainville, this was delayed into 2023 when the security issues in South Bougainville had been resolved.

Table One shows the estimated population to be covered by the program together with the actual population found along with the number of LLINs distributed by district. In total, 178,401 LLINs were distributed to a population of 346,508 people. This resulted in distribution of 51.5 nets for every 100 people in the province.

TABLE ONE – Population And Nets Distributed

Locality	Population from 2000 Census	Population Of Targeted Areas In 2019	Total Estimated Population 2022	Population Surveyed 2022	House Holds Surveyed 2022	Nets Issued 2022	Nets Distributed Per 100 People
North Bougainville	73,091	136,719	152,023	143,501	28,644	73,689	51.4
Central Bougainville	41,485	91,213	102,742	96,579	21,297	49,316	51.1
South Bougainville	60,584	101,223	112,553	106,428	23,934	55,396	52.1
Totals	175,160	329,155	367,318	346,508	73,875	178,401	51.5

A further 244 LLINs were donated to health centres for use for antenatal nets or for use over beds in the health facility. Donations only occurred where there were a few loose nets left or it was difficult to return the nets to stores in Buka.

The overall operational cost of the programme was **832,503.73** Kina (Approximately US\$ 320,194) resulting in a cost of about 4.67 Kina or US\$1.30 per net delivered. This was about 35% over the anticipated budget with extra costs resulting from car and boat hire and fuel costs being much over budget as a result of the program being prolonged for two months. These extra costs would also be due to the costs of transporting nets by boat and vehicles which were much heavier and bulky than the nets distributed in the past.

Other than this, overall, the distribution went well in ARoB with excellent collaboration from provincial and district health authorities which resulted in all targeted communities being eventually reached and all household receiving nets.

Feedback from partners and communities suggest they were happy with the methodology used as the process appeared transparent to all concerned. However, as always, there were a few families who complained that they did not receive enough nets but for the most part it is believed that this was a result of families not fully understanding the allocation system used.

Global Fund donated, supplied and covered all distribution costs for all the nets for ARoB. The nets distributed in ARoB were Magnet nets which came from India. This is the first time this type of net has been used in Papua New Guinea and RAM hopes that these are more durable and better quality LLINs than those distributed in the last few years.

The history of LLIN distribution in PNG and ARoB is discussed in Appendix One and the malaria situation and stratification of malaria in ARoB are discussed in Appendix Two and Appendix Three. Historically it can be said that LLINs have had a tremendous impact on malaria in Papua New Guinea but recent distributions in lower lying provinces have not resulted in decreased malaria except in the highlands of PNG where malaria appears to have been practically eliminated. We hope that these new nets are sufficient to keep malaria at bay in all these areas of ARoB for another three years.



Fig.1 – Initial Planning Meetings With Secretary For Health (Left) And Microplanning Meeting with Bukuru Urban Clinic Staff (Right)

Background

Rotarians Against Malaria (RAM) is a nationally based organisation which was formed in 1997 by the Port Moresby Rotary Club in recognition of the tremendous burden that malaria imposes on the people of PNG.

RAM has an organizational mandate to work in malaria control and the distribution of LLINs in Papua New Guinea and has been working for many years with the National Department of Health (NDOH) and other partners including multilateral and bilateral agencies such as UNICEF and WHO (World Health Organisation), NGOs (None Governmental Organisations) and church groups. (See Appendix One for full history of LLIN Distribution)

Since 2010, RAM has been coordinating the distribution of nets to all districts and provinces of PNG on a three-year recurrent cycle. This effectively means that RAM visits every targeted village in PNG every three years. RAM has been funded by the Global Fund since 2009 and from 2017 to 2020 also from Against Malaria Foundation (AMF) which supplied PNG with the majority of its nets in 2017 and from 2018 onwards to all areas below 1600m only where most of the malaria transmission can be found. During the period 2017 to 2020, the Global Fund resources were therefore mainly used to fund the LLIN distribution costs and other relevant administration costs. However, in 2020, PNG was also lucky to receive a donation of net from the Chinese Government and these were used for all areas between 1600-2000m of altitude.

It should also be noted that since 2015, the National Malaria Control Program no longer distributes nets in areas above 2000m as these altitudes are now considered too cold for malaria transmission to occur. The situation also changed in 2021. AMF no longer is a donor

to PNG and all costs have now reverted to Global Fund. With this change, RAM started to have difficulties covering areas from 1600-2000m but we are very fortunate in that the Global Fund allowed saving from 2020 to be used to procure nets for 2021 for this altitude. At present, the funding situation for LLIN distribution to altitudes of 1600-2000 after 2022 has stopped and it appears at this moment that all LLIN distributions in the future will be limited to below 1600m only.

Generally, LLINs have been distributed to household level throughout the country but when shortage of funds occurred, different strategies of distribution have been used as mentioned above.

PNG can be roughly divided into five epidemiological zones.

- a) Areas which lie above 2000m in altitude which no longer receive LLINs as malaria transmission is not considered likely at these altitudes.
- b) Low lying areas of the country up to 1200m which have stable malaria endemicity and often have poor access to health continue to have household distributions.
- c) Areas from 1200 to 1600m which are generally considered to be of low transmission potential but traditionally have had occasional malaria epidemics due to poor immunity and changing weather conditions. LLIN distribution continue in these settings.
- d) Highlands regions between 1600 to 2000m in altitude such as Mount Hagen which have low malaria endemicity and generally easy access to health services. These are low priority areas and when funding is not available are left out. However, up until 2021, these areas have been covered. From 2015 to 2016, these areas received nets for Under Five children only, and since 2017 up until 2021, RAM has managed to find alternative sources to cover these areas. For example, in 2020, nets for these areas were sourced from a donation of the Chinese Government and in other areas from the Global Fund. Fortunately, there was sufficient funds to cover these areas in 2021. Sadly, from 2022 there are no funds to cover these areas nor likely to be for the foreseeable future.
- e) In urban and peri-urban areas such as Port Moresby which are low lying areas with easy access to health, nets will not be distributed during funding constraints. Nets to these areas will be supplied through the private sector. Similarly, due to funding constraints in 2015, Lae City had Under Five Campaign LLINs only.



Fig.2 – Microplanning Meetings In Buin HC (Left) And In Ruruvu HC (Right)

As a result of this stratification and when funds had been reduced such as at the end of 2014, areas above 2000m no longer received nets and areas from 1600 to 2000m only received under five campaigns in 2015 and 2016. However, fortunately, due to the LLIN donation from the Against Malaria Foundation (AMF) in 2017, all areas received household distribution of

nets except areas above 2000m, and some urban areas such as NCD, Goroka, Mount Hagen and Mendi. After 2018, AMF only donated nets to areas below 1600m but the country has been lucky to find funding to fill this gap of between (1600-2000m) in 2019, 2020 and for 2021 through donations from the Global Fund (2018-2021) and the Chinese Government (2020). However, funding for areas between 1600-2000 metres has now stopped as the Global Fund allocations are not presently enough to cover these areas above 1600m.

One of the conditions of the AMF donation is that RAM would strengthen the way in which surveys are carried out. These new innovative processes are described in the Methodology Section. These methodologies are now being carried out since the beginning of 2017. The major change to the survey methodology suggested by AMF is that previously a village meeting was called after a survey was carried out where names of family members were read out to ensure that all households had been surveyed. Instead of this process, a summary of every village surveyed is posted for 24 hours in a public place so that villages can ensure that all their family members have been included in the survey. As a further verification process, members of RAM and local health staff team carry out random house surveys of 6% of households in every village to ensure that the survey process has been carried out correctly.

For household LLIN distributions, regardless of where they are carried out, they must include a survey and a distribution phase though implementation methods may considerably vary depending on specific circumstances. RAM's approach has been to concentrate on programme quality thus RAM develop methodologies that ensure that all recipients in an area actually receive nets and that this can be reported accurately.

The other major change to the original PNG programme of 2004 to 2009 carried out by the NDOH is that nets are allocated to families on a needs basis rather than simply the number of people in the family. Data analysis of National Capital District (NCD) data has shown that this gives a ratio of nets needed to be about 47 for every 100 people. In the previous LLINs distribution of Round-3 in 2006 to 2010, nets were allocated at a rate of one net to every 2.5 people. With the programme only receiving 80% of LLIN needs, and most provinces distributing for example two nets to families of three, in practically every province, nets ran out before the end of the distribution. The RAM programme makes all attempts to assure that this distribution anomaly does not happen by collecting all population information at the beginning of the program and then allocate the nets based on family needs. This strategy is practiced to ensure that all families receive nets throughout any given province. The only scenario where survey and net distribution may be done simultaneously is in very remote locations where it is not practically possible to return a second time to a location. This is particularly the case in remote villages which can only be reached by boat or very long treks and it is costly and impractical to return to the villages for a second time.



Fig.3 Microplanning At Arawa Hospital (Left) And Survey Volunteer Training At Turiboiru HC (Right)

In terms of coordination, RAM officers are allocated to specific LLGs or health centres where they coordinate the programme together with local health staff. In this capacity, RAM officers

act as facilitators in terms of technical guidance to district health teams in each LLG as well as acting as financial officers and assuring quality control of activities taking place.

Schedule

TABLE TWO
General Timetable Of Activities In ARoB

District	Survey		Distribution	
	Start	Finish	Start	Finish
North Bougainville	26.10.22	01.12.22	03.11.22	07.12.22
Central Bougainville	01.10.22	01.02.23	01.11.22	30.03.23
South Bougainville	14.11.22	18.02.23	23.11.22	26.03.23

Referring to Table Two, it can be seen that the main distribution in ARoB started on 1st October 2022 Central Bougainville and finished also in Central Bougainville on 30 March 2023 due to some remote villages which could not be reached in 2022. It had originally been hoped to complete all the work before the end of the year but security issues in South Bougainville meant that the program could only be completed in South Bougainville in the beginning of 2023.

Methodology

Prior to planning and implementation, a master list of all villages of ARoB was drawn up using data from the 2000 Census and the last RAM survey of 2019 in ARoB. Villages in the list were organised by LLG and Ward. In this master list, the estimated population for 2020 for each village was estimated and recorded in two ways. Firstly, the population of each village is estimated using population figures from the 2000 Census and the estimated annual growth rate for ARoB and then secondly, by taking the population surveyed in 2017 and 2018 and applying the annual growth rate to each village. In addition to this, based on altitude maps, all villages in highlands provinces are categorised and colour coded by altitude zones of below 1200m, 1200 to 1600 metres, 1600 to 2000 metres and lastly those villages above 2000 metres. Only those villages below 1600 metres will receive nets.

In all areas, Health Centres form the hub from which distribution takes place to the respective villages in each health centre’s catchment area. Therefore, with the planning data at hand, RAM staff work together with the Provincial Health Office to allocate every village to its nearest health centre (government or Church Based) and outlines how each village is reached from each health centre. From this it is possible to create a budget, estimate how many nets are needed to be sent to each health centre and work out any other logistic considerations such as use of airplanes or boats to deliver nets to some remote areas.

Once all logistical needs are calculated and nets delivered to the province or district, a RAM team will travel to the province. Once they are in the province, RAM officers are allocated to work with each health centre which becomes the centre of operations for that area.

With the arrival of RAM officers, each health facility identifies health staff members or non-health community volunteers to be involved with the programme. If local health staff are selected, then they are referred to as District Health Team (DHT) but if a non-health staff is selected then they are termed as a Team Leader. Both DHTs and Team Leaders are responsible for the survey and distribution of nets. Each DHT and Team Leader works only in the area in which the health facility is based.

Before any activities take place, RAM officers are expected to work with health staff and other team leaders to make detailed plans (micro-planning) of their activities for training, survey, verification and distribution of nets. This process involves making maps of the area, deciding how many teams are needed, and then making detailed work plans for each of the team members. This process also involves verifying that no villages have been left out of the census list and that the whole area is covered.

Also prior to field activities in any given LLG or health centre, a social awareness campaign was carried out in all villages informing villagers of the upcoming survey and distribution. This was also used as an opportunity for RAM officers to become familiar with each area. During this process, key malaria messages were also discussed with villagers such as the need to use LLINs every night.

During the social awareness campaign, a daylong training meeting is normally held at each health facility for all DHT members in that area who jointly carry out the micro-planning exercise. These training and micro-planning sessions as well as all other activities associated with the programme are coordinated by RAM project officers together with health counterparts at provincial and district levels. RAM officers also have the responsibility to ensure the LLINs operation is kept in line with the original budget.

Survey

The survey was carried out in the following way.

- 1) When arriving at a village and before starting the census process, a meeting was held with village elders explaining the process.
- 2) If village elders have an up-to-date list of all village occupants, the team would use this list to compile a census but still visit every household to confirm this information.
- 3) Where a village is small, e.g., less than 30 families, team members may carry out the census by themselves.



Fig.4 – Training Village Survey Volunteers In Sinkodo HC (Left) And Ruruvu HC (Right)

- 4) Where villages are large, village volunteers were identified with the assistance of the village chiefs, elders, health staff and councillors. One volunteer was chosen for each group of about 50 families with volunteers chosen by natural divisions in the village e.g., clans where one volunteer would make a list of only one clan. These volunteers were trained to carry out the survey by actually surveying houses with the team leaders supervising and assessing the recording. Once the team leader was confident that the volunteers knew the

survey methodology, they were left to continue with the household survey with survey teams returning within an agreed period to verify the work of the survey volunteers, collect survey books and also to pay the survey volunteer, provided that the work was carried out correctly. The training of volunteers may occur in groups or individually depending on access to the village and its proximity to other villages.

- 5) For each household surveyed, all family members who normally reside at the household for a minimum of nine months were recorded by Name, Age, Sex and Relationship to head of household. All names and other information were recorded in the survey book with one survey form being used for each household.
- 6) After surveying a household, a white copy of the census form was given to the head of household or most senior person present in the household.
- 7) Where a whole household was absent, information was taken from the neighbours and the white survey form left with them.
- 8) In all cases, after the census/list was finished, all the information about the households and number of household members is entered into a summary sheet. This list is then hung in a public place where all villages can verify that the right number of family members for each household has been recorded and that all families have been included in the survey. After the list has been in a public place for 24 hours, then the volunteer requests for the RAM officer and or DHT to visit the village.
- 9) RAM officers and DHTs must visit three households randomly from each survey book (6%) and verify that the survey has been carried out correctly. Only when this has been done, then the volunteer can be paid.
- 10) If a village was surveyed by more than one volunteer, then volunteers were asked to work together so that lists can be hung together and the village volunteers can be verified at the same time. This process also ensures that households do not appear on more than one list. After this process, both the volunteers and the village elders sign a form to verify that this was done.
- 11) All village volunteers received a standard payment of 20 kina a day. Experience has shown that volunteers can usually only survey about 25 households a day, so for the most part, they would receive up to two days' allowance to complete a survey book (50 households).
- 12) All volunteers were also given a small training manual. Contained in this training manual are key health education messages about malaria which volunteers are expected to discuss with households. This perhaps is the only project in PNG that is able to reach down to potentially every household in the country.



Fig.5 – Verification Of Survey In Turiboiru (Left) And Summary Survey Hung Up In Sovele (Right)

To aid with the survey, the master plan with names of all census units in all the wards in the district had been printed out and given to all the DHTs and team leaders. This document also provides the projected population per census unit as well as other information which might be useful to the area concerned.

After collecting survey data from each village, the information is immediately compared with the data on the master sheet. Where the surveyed population is very different from the projected population, the project staff make enquiries into the reasons for these discrepancies.

Following the survey, all data was entered into a computer where possible or entered into a master sheet of the area concerned. For each village, nets were allocated to each family on a needs basis and this is also entered into the computer or master sheet. This process ensured that all villages received nets and that there would be no shortfalls.

The needs basis in PNG is based on the assumption that children under the age of six sleep with their parents, after which boys and girls are grouped separately from their parents. Nets are also allocated based on the number of children in the house, their ages, and whether there are other dependents living in the households such as grandparents. A full description of the allocation system can be obtained from RAM officers but suffice to say a family of four could receive between one to four nets depending on the sex and age of family members.

Nets are allocated to each LLG based on assumed populations of each LLG and it was important prior to the distribution to ensure that when allocations had been carried out to families and villages that there were enough nets available to cover each and every family.

Distribution

There was no official launch for the LLINs distribution in ARoB. However, prior to distribution there was a social awareness phase where the project teams informed communities about the arrival of the distribution teams, especially those accessible by road.

The LLINs were then distributed to teams depending on the needs of each village. The LLINs were then distributed by village or wards depending on whether villages were close together. In this latter case, a central location was identified in the ward and then distribution of nets was carried out. In terms of distribution sites, villages were organised in different ways to make the flow of nets easy and effective. However, the actual organisation depended on each team and the structure of the various groups receiving nets.

All net packaging was opened at distribution site with a district code printed on each net e.g., ARB22 meaning ARoB 2022. This code is added to identify nets to assist in future monitoring exercises as well as discouraging householders from selling the nets on the open market.

Some examples of the process used to control the crowd includes;

- Arranging the people according to the serial numbers in the survey books e.g., 72001 - 72050 and then calling the names and the serial numbers.
- Call the names of the owners of the households, collect the white copy and give the nets.
- Wait for everyone to come to the distribution site, collect all the white copies and sort the copies with the pink copies. Call the names on the white copies and give the nets.

Some of the following control methods were used.

- Everyone who presented with a white copy was given LLINs at the distribution site with LLINs only given to the owner of the house or a member of the house whose name is written on the back of the survey form.
- Those people who lost the white receipts were left to the end of each distribution, with nets only being issued if the name of the person collecting the nets was found on the back of the pink copies.
- For those families who were absent at the time of distribution, their names were written in a form – MOSQUITO NETS HELD IN TRUST BY VILLAGE CHIEFS FORM and the nets

allocated to missing families were given to chiefs or any person entrusted by the community with the forms for these families to collect their LLINs later.

- Householders are now being asked to make a thumb print as proof of delivery of nets to a household. The Global Fund had formally asked that householders should sign for delivery of nets. This was considered problematic as many householders are illiterate and even where householders can write, this process takes a long time in what is often a very chaotic and charged environment where speed is of the essence.

It should also be noted that surveys and distributions took place at more or less the same time in some remote places of ARoB. This is particularly true for mountainous villages or villages at the end of rivers which might take several hours or days to reach. In these instances, estimations based on the 2000 Census data and local knowledge used to pre-allocate nets. Teams were then dispatched to these areas with nets. On arrival in these remote places, surveys took place and were immediately followed by a distribution based on the survey results.

Other details

In the case of ARoB, all LLINs were ultimately delivered to Lae by ship from India in sixteen containers. These nets are known as Magnet and are light blue in colour and made from polyethylene. All nets arriving in Lae were custom cleared by Express Freight Management and then stored temporarily in their premises in Lae. After this, containers were moved to ARoB by Consort Shipping with six containers going to Buka and the remaining ten containers delivered to Arawa and then stored in Buka Wharf and Arawa Hospital. From the containers the nets were moved to the various health facilities by road, boat or by dinghy.

Results

Table Three shows the LLIN distribution data for North, Central and South Bougainville. This table give the actual population surveyed together with the number of LLINs distributed. In total, 178,401 LLINs were distributed to a population of 346,508 people. This resulted in distribution of 51.4 nets for every 100 people in ARoB.

TABLE THREE
Nets Distributed At Province Level In ARoB

Locality	Population from 2000 Census	Population Of Targeted Areas In 2019	Total Estimated Population 2022	Population Surveyed 2022	House Holds Surveyed 2022	Nets Issued 2022	Nets Distributed Per 100 People
North Bougainville	73,091	136,719	152,023	143,501	28,644	73,689	51.4
Central Bougainville	41,485	91,213	102,742	96,579	21,297	49,316	51.1
South Bougainville	60,584	101,223	112,553	106,428	23,934	55,396	52.1
Totals	175,160	329,155	367,318	346,508	73,875	178,401	51.5

Referring to Table Three and Table Four, it can be seen that the overall population growth rate is roughly 1.73% overall which is one of the lowest growth rates in PNG and far less than previous surveys. Overall, this suggests that in the last three years, many people have left ARoB unless Covid or other factor has affected the growth rate. However, the growth rate surprisingly is very high for the Atolls which suggests that some of the population of the Atolls are returning home. Also, perhaps a surprise is the increased population growth in Torokina.

TABLE FOUR
Nets Distributed At District Level In ARoB

District	Region	Population from 2000 Census	Population Of Targeted Areas In 2019	Total Estimated Population 2022	Population Surveyed 2022	House Holds Surveyed 2022	Nets Issued 2022	Growth Rate Against 2019 Survey	Nets Per 100 People
Tinputz	North Bougainville	9,767	22,400	24,907	23,844	4,807	11,881	2.10	49.8
Kunua	North Bougainville	9,089	17,836	19,832	17,730	4,002	9,475	-0.20	53.4
Selua/Suir	North Bougainville	9,446	19,623	21,819	19,873	4,077	9,988	0.42	50.3
Buka	North Bougainville	36,676	67,033	74,536	72,211	13,648	36,831	2.51	51.0
Nissan	North Bougainville	5,725	7,204	8,010	6,799	1,412	3,969	-1.91	58.4
Attols	North Bougainville	2,388	2,623	2,917	3,044	698	1,545	5.09	50.8
Wakunai	Central Bougainville	10,023	21,928	24,383	23,694	5,616	12,293	2.62	51.9
Arawa	Central Bougainville	31,462	69,285	78,359	72,885	15,681	37,023	1.70	50.8
Buin HC	South Bougainville	26,469	45,124	50,175	48,114	10,185	25,250	2.16	52.5
Siwai	South Bougainville	13,724	22,648	25,183	23,645	5,508	12,314	1.45	52.1
Bana	South Bougainville	14,882	25,088	27,896	25,293	5,774	12,960	0.27	51.2
Torokina	South Bougainville	5,509	8,363	9,299	9,376	2,467	4,872	3.88	52.0
Totals		175,160	329,155	367,318	346,508	73,875	178,401	1.73	51.5

Referring to Table Five, a further 244 LLINs were donated to health centres for use for antenatal nets or for use over beds in the health facility. Donations only occurred where there were a few loose nets left or it was difficult to return the nets to stores in Buka and Arawa.

TABLE FIVE
Nets Donated To Health Centres

Region	Area	HC	Donated
North Bougainville	Kunua	Kunua HC	82
North Bougainville	Selua/Suir	Hantoa HC	49
North Bougainville	Buka	Buka UC	11
North Bougainville	Nissan	Nissan HC	28
South Bougainville		Turiboiru HC	8
South Bougainville	Torokina	Piwa HC	50
South Bougainville		Boku HC	16
TOTAL			244

TABLE SIX
Cost Of Programme In ARoB (All Costs in Kina)

Expense Types	Budget	Actual	Variiances	% Variance
Human Resources	K173,054.00	K218,008.00	-44,954.00	-26.0
Fuel Cost	K83,520.00	K99,584.75	-16,064.75	-19.2
Car Hire Cost	K300,500.00	K424,970.00	-124,470.00	-41.4
Boat Hire Cost	K25,400.00	K78,380.00	-52,980.00	-208.6
Stationeries/Supplies	K3,000.00	K3,980.50	-980.50	-32.7
5% Contingency	K29,264.00	K7,580.49	21,683.51	25.9
Totals	K614,738.00	K832,503.74	-217,765.74	-35.4

Referring to Table Six, it can be seen that the overall operational cost of the programme was **832,503.73** Kina (Approximately US\$ 320,194) resulting in a cost of about 4.67 Kina or US\$1.30 per net delivered. This was about 35% over the anticipated budget with extra

costs resulting from car and boat hire and fuel costs being much over budget as a result of the program being prolonged for two months.

Referring to Table Seven, this shows the radio and cell phone coverage for ARoB. Comparing with 2019, it appears that the cell phone coverage has increased while radio coverage has decreased but overall, there are still many villages in ARoB with no radio or cell coverage and communication into these areas will remain problematic. This makes health messaging communication in these areas very difficult.

TABLE SEVEN
Cell and Radio Coverage In ARoB

District	Villages	House Holds Surveyed	Digicel	Bmobile	Houses with Radios	Villages With Radio Networks
North Bougainville	259	28,644	232	34	6,928	191
Central Bougainville	327	21,297	222	84	5,475	120
South Bougainville	354	23,934	257	1	5,551	83
Total	940	73,875	711	119	17,954	394



Fig.6 – Household Survey Verification In Arawa

Conclusions

Overall, it can be said that the LLIN distribution in ARoB was generally a huge success both in terms of results and great collaboration between staff from RAM and the Bougainville Health Authorities at all levels in North, Central and South Bougainville as well as Catholic and United Church Health Services who have a presence in the areas receiving nets. Through this collaboration, the data suggests that all villages were reached and practically all families in those villages received nets despite any local challenges.

There were some challenges which included the following:

- Storage of containers proved a huge challenge as no suitable location was found to store the nets in Buka Town. Fortunately, the Buka Wharf Authorities allowed the nets to remain on the wharf and for RAM officers to unload them on the wharf. For Arawa, the program was fortunate that there was enough room at Arawa Hospital to store all containers in safety.

- There were security issues at the end of 2022 in parts of South Bougainville (Buin and Siwai which did not allow distribution to take place. This delayed the program and meant that South Bougainville could only be completed in 2023. There were also three villages in Central Bougainville that couldn't be done in 2022. These too got completed in 2023. On this issue, the RAM team were also advised by health authorities that it was not safe to go into the Tobago Health Centre catchment area. However, locals from this area approached the RAM team and guaranteed safety so the teams were also able to cover this area.
- It has been hoped to fly RAM Officers and LLINs to Nissan Island with Tropic Air but Tropic Air pulled out of Bougainville when the team arrived. To travel to Nissan and the outer islands, a boat was hired.
- Market days, volunteers not turning up as requested and rain all delayed operations, particularly during distribution times.
- The nets being distributed in ARoB on this distribution round are much heavier and bulkier than previous distributions. This required extra trips to transport nets to health centres which increased costs and time for hire cars and trucks used for transportation compared with previous years.
- Some villagers rejected nets due to one or two people going around misleading the villagers, giving false information of nets being related to COVID-19 pandemic. For those who refused their nets, these were left with health authorities so the people could claim their nets if they changed their minds.

Other than this, there was excellent collaboration between all health staff and RAM and despite all the major and minor challenges faced, all officers and health facilities managed to complete their operations successfully. The only issue of concern is that the population growth of ARoB has reduced from previous years suggesting that many people in ARoB have emigrated to other locations in PNG else it means that many people refused to get registered as suggested in the comments about COVID 19.

Other than this, as with other provinces in the country where RAM has operated in over the last ten years, the methodologies used this time, including survey verification processes appeared practical and were openly welcomed by both villagers and implementers, particularly the practice of hanging up the list of names in the middle of the village following a survey. This allowed communities to feel that they were part of a transparent process. This is not to say that perhaps some extra people managed to slip into the books, but in general, it was felt that the system was fair and included practically everyone concerned. The use of the master lists also ensured that all villages were reached and accounted for.

The review of the data prior to the distribution was also important. This ensured that all villages and families received the correct numbers of nets. The 2000 Census Lists were very important to ensure that survey teams reached all villages: without the complete list of villages, it would be very difficult to make a detailed report.

The greatest complaint still received from communities was the number of nets they received. Even though the team explained the logic of how the allocation of nets is calculated, some families still expect one net per person, others expect it to be based on a fixed allocation based on the number of people in the family, and yet others thought they would be given nets based on the number of nets they stated they already had. This highlights that a better system of explaining the allocation system still needs to be developed. In general, unlike some previous districts covered by RAM and DHTs of ARoB assisted in the allocation of the nets which meant they were in a better position to explain the distribution system on the ground. Nevertheless, despite all the difficulties involved, it would appear that the vast majority of community members accepted the outcome and there were no real problems or complaints encountered.

Acknowledgements

On behalf of the Rotarians Against Malaria household distribution team who worked in North Bougainville, South Bougainville and Central Bougainville, we would like to sincerely acknowledge and thank the Autonomous Region of Bougainville Health Authority and the Health Staff of North, Central and South Bougainville for the excellent help and cooperation during the Long Lasting Insecticide Nets (LLINs) distribution programme.

In particular, we would like to thank at Health Department level Dr Clement Totavun (Health Secretary), Dr Ruline Pokote (Deputy Health Secretary), Roselyn Gatana (Public Health Director), Dr Cyril Imako (Director Medical Health Services for the Arawa Hospital) and Mr. Absalom Masono (Provincial Malaria Officer).

For the staff of North, Central and South Bougainville, we would like to sincerely thank all those who tirelessly took part in the programme, and in particular we would like to mention the following people who were instrumental in providing the local expertise and advice from planning to implementation of the programme namely:

North Bougainville

Name	Occupation	Institution
Mr Rodney Sapaung	Executive Director Rural Health Services	North Bougainville
Mr. Aloysius Kinani	Logistics Officer	North Bougainville
Mr. Simon Belu	Environmental Health Officer	North Bougainville
Mr. Simon Belu	Environmental Health Officer	Buka Urban Clinic
Ms. Judith Tseraha	Nursing officer	Malasang Aid Post
Sr. Ruby Tohiana	Sister in Charge	Gagan Health Centre
Mr. Clement Toahei	Community Health Worker	Gagan Health Centre
Ms. Cathleen Manri	Officer in Charge	Lemanmanu Health Centre
Mr. Joel Sarusaru	Community Health Worker	Scotolan Health Centre
Mr. Joneha Boiresi	Officer in Charge	Kunua Health Centre
Sr. Cathy	Officer in Charge	Kuraio Health Centre
Sr. Veronica Lebolo	Officer in Charge	Hantoa Health Centre
Mr. Sebastine Kira	Community Health Worker	Hantoa Health Centre
Sr. Lyne Pais	Community Health Worker	Hantoa Health Centre
Mr. Blaise Wamou	Community Health Worker	Hantoa Health Centre
Mr. Joel Varovoi	Officer in Charge	Kekesu Health Centre
Mr. Joachim Tarovi	Community Health Worker	Tearouki Health Centre
Mrs. Christina Korus	Officer in Charge	Hanahan Health Centre
Mrs. Sussie Anisia	Officer in Charge	Buka Hospital-Nissan
Mrs. Jenny Tobunbun	Community Health Worker	Buka Hospital-Nissan

Central Bougainville

Name	Occupation	Institution
Mr. Peter Arwin	Director Rural Health Services	Central Bougainville
Mr. Ignatius Giranha	Director Nursing School	Central Bougainville
Mr. Fabian Itamema	District Health Manager	Panguna
Mr. Patrick Tsikata	District Health Manager	Kieta
Mr. Leo Tanata	Officer in Charge	Manetai Health Centre
Mr. Josiah Tsikoa	Community Health Worker	Manetai Health Centre
Ms. Dorothy Momoi	Officer in Charge	Koromira Health Centre
Ms. Mary Gareva	Community Health Worker	Koromira Health Centre
Mr. Cornelius Konisinu	Community Health Worker	Koromira Health Centre
Mr. Nathan Birio	Community Health Worker	Arawa Hospital
Mrs. Renitha Kosi	Nursing Officer	Kakusida Community Health Post

Mr. Moses Cornilus	Community Health Worker	Tavatava Aid Post
Ms. Celestine Kusa	Officer in Charge	Wakunai Health Centre
Mr. Lawrence	Community Health Worker	Wakunai Health Centre
Ms. Esther Wesly	STI-TB Supervisor	Ruruvu Health Centre
Sr. Dorcas Teppi	Officer n Charge	Ruruvu Health Centre
Ms. Priscilla Otoria	Community Health Worker	Panguna Health Centre
Sr. Janet Dare	Sister in Charge	Paruparu Health Centre

South Bougainville

Name	Occupation	Institution
Ms. Cecelia Nagu	Executive Director Rural Health Services	South Bougainville
Mr. Launo Molomdatso	Director Rural Health Services	South Bougainville
Mr. Fernando Magalia	District Health Manager	Torokina
Sr. Michelle	Sister in Charge	Turiboiru Health Centre
Mr. Pete Kakata	Community Health Worker	Turiboiru Health Centre
Mr. Justin Aisi	Community Health Worker	Buin Health Centre
Ms. Audrey Matheson	Sister in Charge	Monoitu Health Centre
Ms. Scholly Kang-Ako	Community Health Worker	Monoitu Health Centre
Mr. Abraham Tanasu	Community Health Worker	Tonu Health Worker
Mr. Kasi Pampu	Community Health Worker	Konga Health Centre
Mr. Thomas Momei	Community Health Worker	Katuku Health Centre
Mrs. Macelyn Kalam	Sister in Charge	Moratona Health Centre
Mr. Mathew Waina	Community Health Worker	Moratona Health Centre
Mr. Ernest Tagumo	Community Health Worker	Moratona Health Centre
Mr. Peter Ugua	Officer in Charge	Lenoke Health Centre
Mr. Stanis Meguta	Officer in Charge	Tabago Health Centre
Sr. Thomaster Pinoko	Sister in Charge	Muguai Sub Health Centre
Mr. Samuel Naguo	Community Health Worker	Oria Health Centre
Mr. Ernest Tagumo	Community Health Worker	Piva Health Centre
Mr. Andrew Sivi	Community Health Worker	Sovele Health Centre
Ms. Priscilla Kubala	Officer in Charge	Boku Health Centre

RAM would like to specially acknowledge the support received from established and local service providers for logistical support namely; Consort Shipping for Transporting 16 containers from Lae to Buka and Arawa port respectively. Etanaba Side Lifter company for unloading and transporting 7 containers and Port Services for delivery of 3 containers from Kieta wharf to Arawa Hospital yard. A local transport company for delivery of nets and fuel drums to Buin Hospital and Wakunai Health Centre. RAM also thanks Litel & Associates Limited for further delivery of nets and fuel drums with an officer from Buka to Nissan. The same boat was engaged for delivery of nets to Atolls and being fully engaged till the completion of the program.

RAM also thanks all the local hire car owners and local boat owners, for allowing their cars for these operations. We would not have reached many communities without the dedication of the drivers and dingy operators. RAM would like to also thank Puma Energy, Jehohi Limited, Kute Limited and Mokon Limited for supplying bulk fuel for the operation.

RAM also thanks all the church run health facilities coordinated under Catholic Church, United Church (UC) and lastly to all the Government run facilities for allowing their staff to work with the RAM team.

Last but not the least, RAM would like to extend our acknowledgement and appreciation to all the hard working volunteers and local community leaders for ensuring all homes were surveyed and assisting in distributing all the nets. RAM thanks you all very much for your hard work, support and local expertise in making the overall program a success.

Appendix One – History Of LLIN Distribution In PNG

The use of Insecticide Treated Nets (ITNs) started in PNG in 1985 when the PNG Institute of Medical Research (IMR) conducted one of the first trials demonstrating the health impact of treating mosquito nets with insecticide. The study, done near Madang, showed a reduction of *P. falciparum* incidence and prevalence in children below five years of age sleeping under permethrin-treated nets. The protective effect of insecticide-treated nets (ITNs) was also confirmed in many other trials around the world. As a consequence of such findings, the national malaria control program in PNG started emphasizing the use of ITNs in 1989. However, no regular or large-scale distribution of ITNs was carried out at this time.

In the following years, coverage with mosquito nets and other control interventions remained patchy and low in many parts of PNG. It was during this period that Rotarians Against Malaria (RAM) was created from the Port Moresby Rotary Club in 1997. Using a donation of 150,000 treated nets given to them from the National Department of Health (originally from AusAid), RAM successfully ran a revolving fund of nets in which nets were sold at a price which allowed the proceeds to buy more nets. RAM did this successfully for many years distributing about 45,000 treated nets a year from 2000 to 2004.

Prior to 2004, most treated nets had to be re-treated every six months or a year which requires a lot of work and organisation. In early 2004 everything changed with the introduction of Long-Lasting Insecticidal Nets (LLINs) which would last for 20 washes and effectively no longer required to be treated repeatedly. This change in nets also coincided with the introduction of the Global Fund into PNG known as the Global Fund Round 3.

From 2005 to 2009 the malaria programme in PNG received and delivered about 2.3 million nets throughout the country at a rate of one net for every 2.5 people. The delivery of nets to village level was under the provincial health authorities and reached most parts of the country with Rotarians Against Malaria (RAM) being responsible in delivering the containers of nets to the provinces from Port Moresby and Lae where the nets arrived from overseas.

While the programme was very successful in some areas it was not so successful in others. Problems included slow release of funds from central to provincial level, some provinces not following technical guidelines given resulting in some areas not been covered, and technical and financial reporting leaving a lot to be desired in many of the provinces. When further funds became available in what is known as the Global Fund Round Eight, it was decided that Rotarians Against Malaria (RAM) would take over the coordination of the LLIN programme under the supervision of the National Malaria Control Program.

This change has resulted in RAM being responsible for the overall coordination of the LLIN distribution of LLINs in the country particularly in the areas of quantification, procurement, reporting and delivery to provincial and district level. However, the actual delivery of nets to village level is a collaboration between RAM, provincial health authorities and district health and health centre staff.

Fig.1 shows the distribution of nets to districts and provinces from 2006 to 2009 while Fig.2 shows the distribution of nets from 2010 to 2014 and Fig.3 shows the distribution from 2015 to 2017 which includes under five distributions in 2016 and 2017. Under Five distributions had been carried out in areas above 1600m and in Port Moresby and Lae City due to lack of funds. This situation changed when support from Against Malaria Foundation was received.

Up until June 2022, a total of 14.7 million LLINs had been distributed to household level under the coordination of RAM. Therefore, with the 2.5 million nets distributed from 2006 to 2009, this means that about 17.2 million nets have been delivered to household level in PNG since 2006. This is more than one net per every person in PNG. RAM has also distributed about

another 1.5 million nets to health centres for distribution to pregnant women and for prisons and boarding schools.

It should also be noted that alongside developments related to treated mosquito nets, the first cases of chloroquine-resistant malaria were reported in 1976. This progressed rapidly to widespread resistance of *P. falciparum*, and to a slightly lesser extent *P. vivax*, to chloroquine, amodiaquine and sulphadoxine-pyrimethamine (SP). In studies conducted between 2003 and 2005, even combination regimens of these drugs faced up to 29% resistance of *P. falciparum*². This situation together with Global Fund Round 8 also saw the introduction of artemether lumefantrine branded as Malawan and IPT (Intermittent Preventative Treatment) for antenatal women using Fansidar (Pyrimethamine Dapsone).

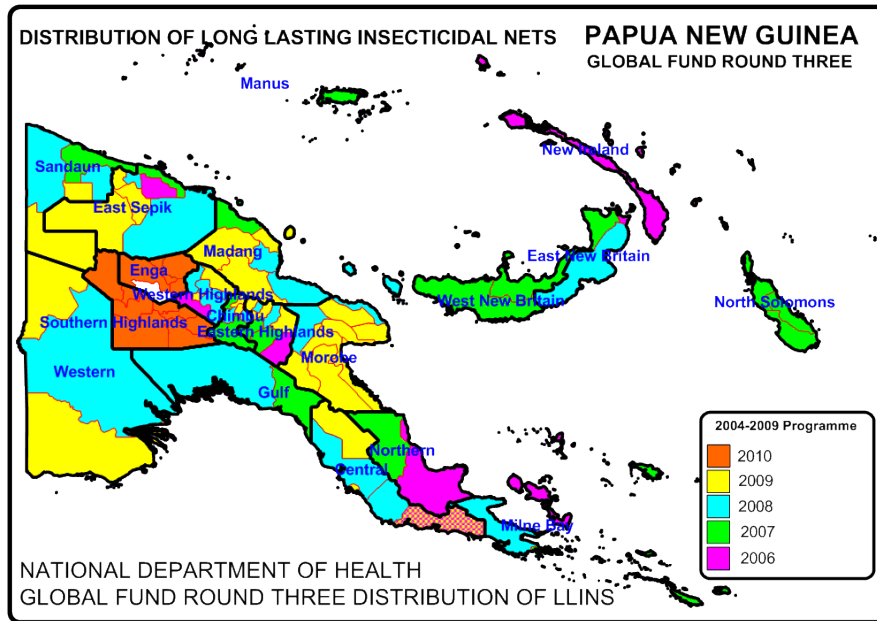


Fig. 1 Distribution Of Nets Under National Department Of Health From 2006 To 2010

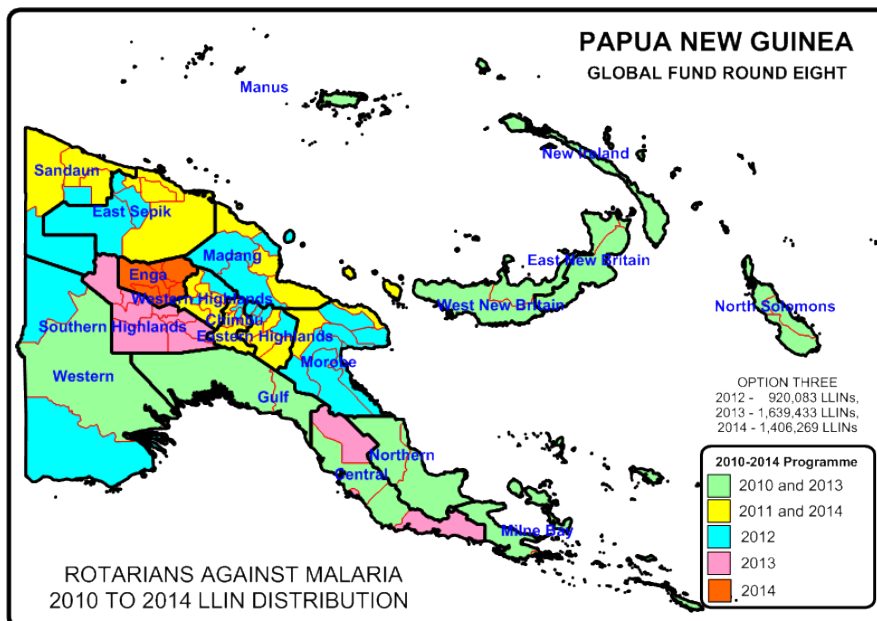


Fig.2 Distribution of LLIN Programme 2010 to 2014

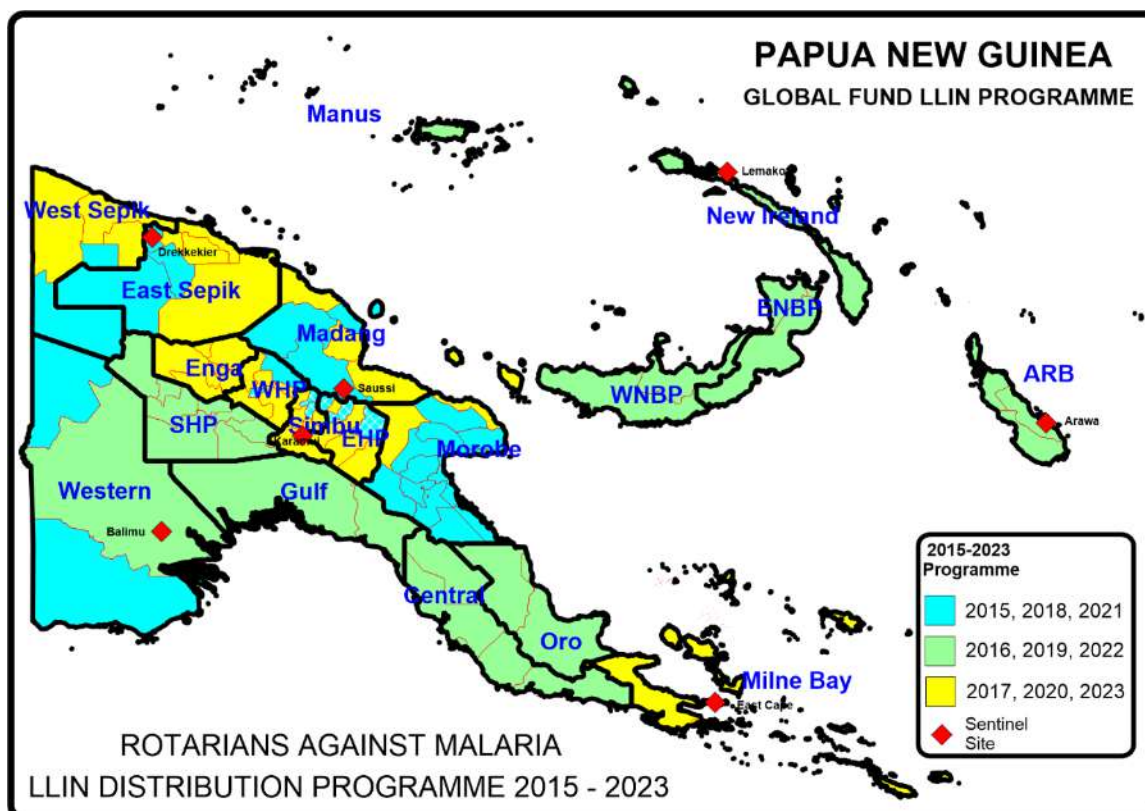


Fig.3 LLIN Distribution Programme 2015 to 2023

TABLE ONE - LLINs Delivered In PNG Under Coordination Of RAM From 2010

Period	Dates	Districts	Provinces	Nets Delivered	Type Of Net Delivered
Phase One (2010-2011)	Nov 09 - Oct 11	50 Districts	18 Provinces	1,890,448	Permanet 2
Year 3 (2012)	Nov 11 - Sep 12	27 Districts	10 Provinces	832,671	Permanet 2
Year 4 (2013)	Oct 12 - Sep 13	28 Districts	12 Provinces	1,210,391	Permanet 2
Year 5 (2014)	Oct 13 - Sep 14	23 Districts	11 Provinces	1,374,791	Permanet 2
Year 5 (2014) No Cost Extension	Oct 14 - Dec 14	Okapa, Lufa, Madang, Angoram, Maprik, Yangoru Saussi, Wewak, Aitape Lumi, Nuku and Vanimo Green	EHP, Madang, East Sepik and Sandaun	454,806	Permanet 2
Year 6 (2015)	Jan - Dec 2015	29 Districts	11 Provinces	932,822	Permanet 2
Year 7 (2016)	Jan - Dec 2016	27 Districts	13 Provinces	805,597	Permanet 2
Year 8 (2017)	Jan - Dec 2017	36 Districts	13 Provinces	1,543,947	Permanet 2
Year 9 (2018)	Jan - Dec 2018	27 Districts	11 Provinces	1,211,922	Permanet 2
Year 10 (2019)	Jan - Dec 2019	26 Districts	12 Provinces	1,266,525	Permanet 2
Year 11 (2020)	Jan - Dec 2020	28 Districts	13 Provinces	1,495,368	Safe net, Interceptor, Yorkool and Royal Sentry
Year 12 (2021)	Jan - Dec 2021	30 Districts	9 Provinces	1,301,456	Yahe
Year 13 (2022)	Jan- Mar 2022	North and South Fly, Telefomin, Kairuku	Western, Sandaun, Central	164,212	Magnet, Yahe
	Apr - Jun 2022	Rigo, Kairuku Hiri, Gailala, Koroba Kopiago, Komo Magarima, Nipa, Kagua Erave, Ialibu Pangia, Kerema	Southern Highlands, Hela, Central, Gulf	242,948	Magnet, Yorkool
	Jul - Sep 2022	Kairuku, Kiloni, Middle Fly, Sohe, Ijviati, Manus	Gulf, Western, Oro, Manus	290,096	Yahe, Magnet
	Oct - Dec 2022	Manus, Kavieng, Namatania, North Bougainville, Central Bougainville, and South Bougainville	Manus, New Ireland, AROB	255,270	Magnet
New Funding Model (2015-2021)				9,510,163	
Round Eight (2010 - 2014)				5,763,107	
Overall Total Phase One and Phase Two And NFM				15,273,270	

Appendix Two – Malaria In ARoB Compared With Other Area Of PNG

Fig.1 shows the decrease of malaria from 2007 to 2015 in all provinces, Fig. 2 shows the actual malaria incidence in 2022 by district compared with other provinces and Fig.3 shows annual malaria trends from 2016 to 2022. In ARoB, it can be seen from Fig.1 that malaria decreased from 2007 to 2015 by 75% which is one of the highest reductions of malaria in the country. In Fig.2, in 2020 it can also be seen that in ARoB the malaria incidence is 116 per 1000 in North Bougainville as 27 cases per 1000 in South Bougainville which is one of the lowest malaria incidences in PNG. Fig. 3 and Fig.4 show the malaria incidence by year with Fig.4 showing malaria incidence compared with net distributions in ARoB. It can be noted that in general, LLIN distributions in 2010 and 2013 had a massive impact on malaria but other distributions from 2013 onwards resulted in some initial decreases of malaria which soon resulted in malaria going up again. This is believed to be because of changes to the LLINs PNG received after 2012 which resulted in the nets no longer working as well as they did in the past. It can only be hoped that the Magnets distributed in 2022 have a better impact than those of recent years.

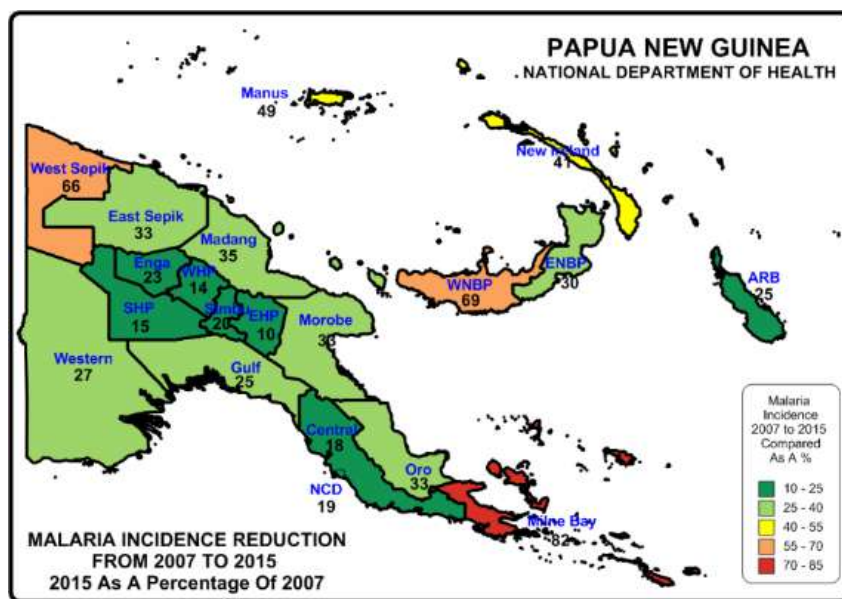


Fig.1 – Relative Reduction Of Malaria In Provinces Of PNG

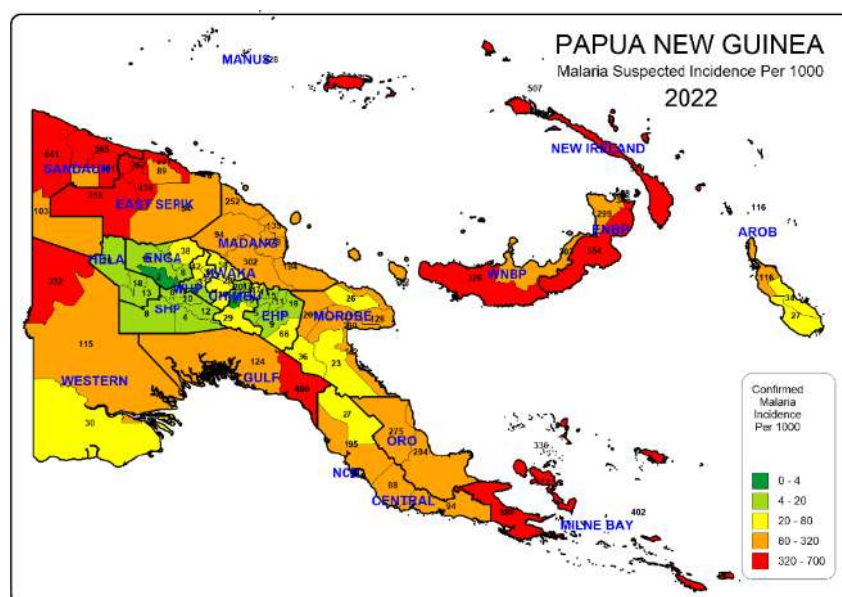


Fig.2 – Reported Malaria Incidence By District In 2022

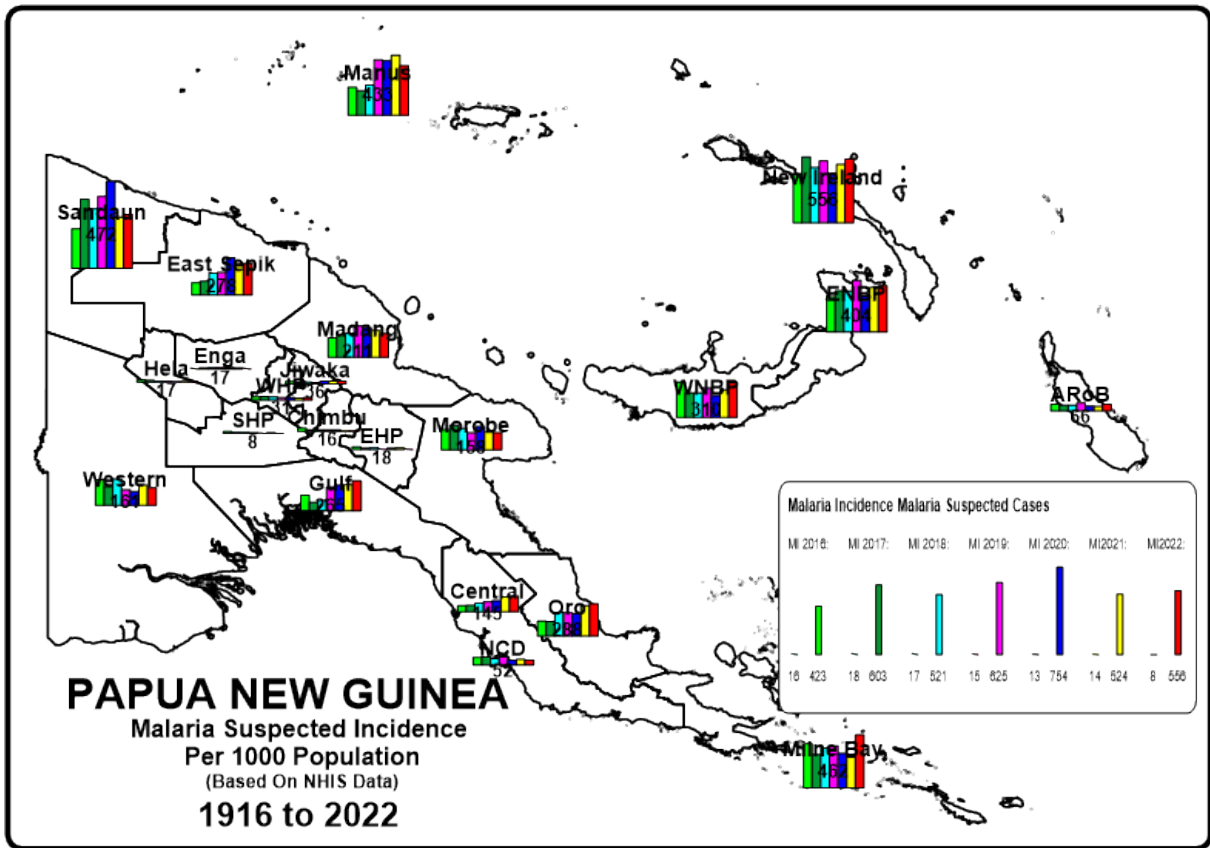


Fig. 3 - Reported Malaria Incidence In PNG From 2016 To 2022

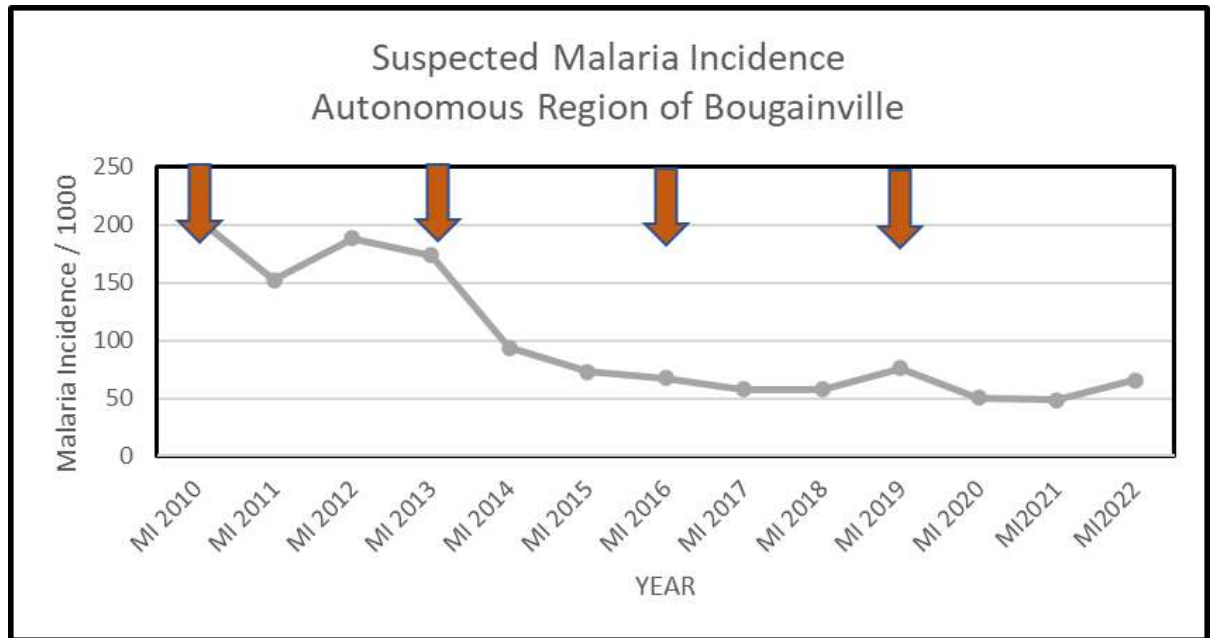
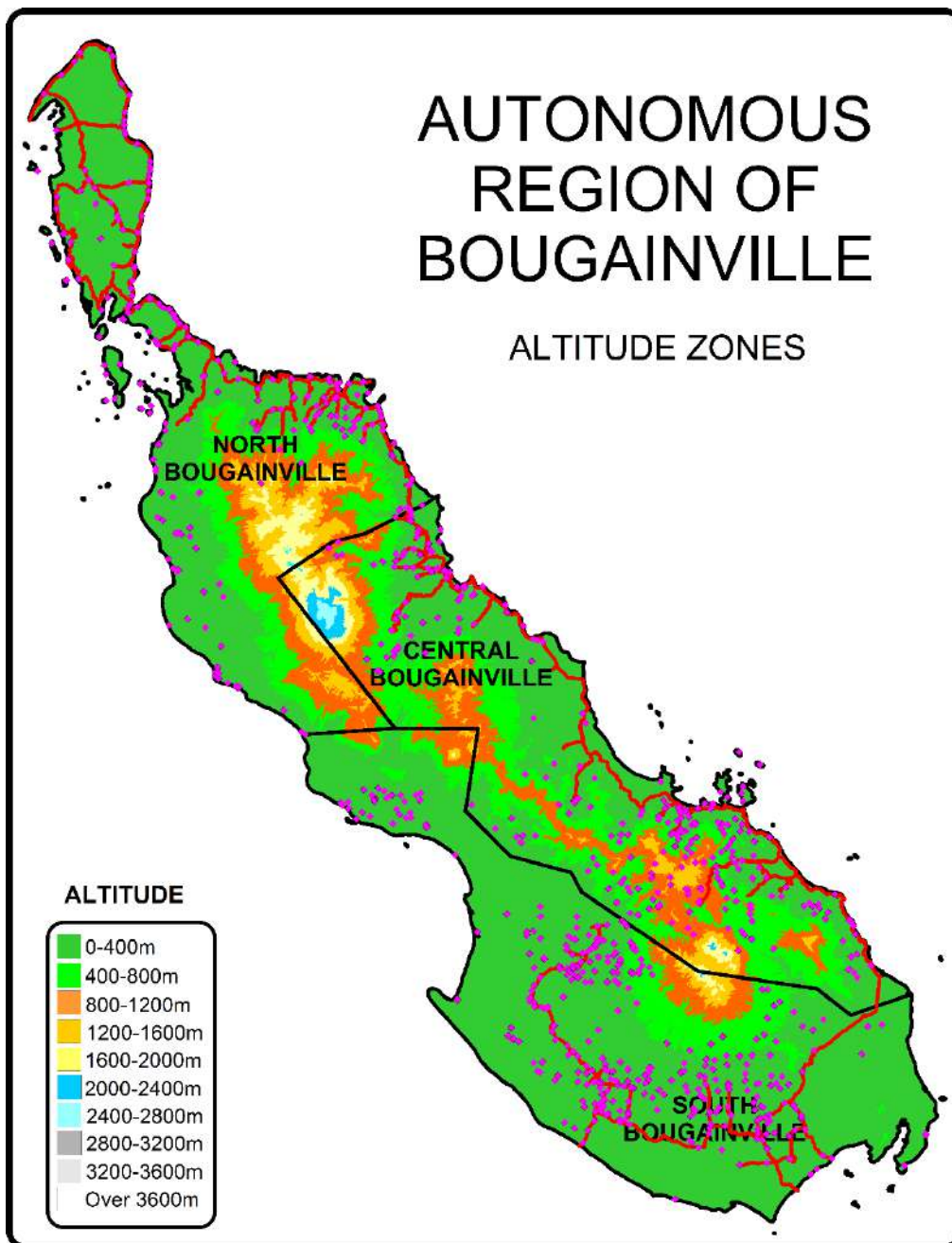


Fig. 4 – Malaria Suspected Malaria Incidence Versus Distribution Of Nets
Arrows represents LLIN distributions done in ARoB in 2010, 2013, 2016 and 2019.

Appendix Three - Malaria By Altitude

The Autonomous Region of Bougainville (ARoB) is comprised of a one large island and a number of smaller islands in the Coral Sea east of the mainland of Papua New Guinea (PNG). While there are mountains that rise above 2000m, the majority (87%) of the population live on the coastal areas below 400m where malaria is endemic with only 0.4% living between 1200-1600m where *Plasmodium falciparum* is generally absent or epidemic in nature. For practical purposes therefore, the whole population of ARoB is exposed to malaria. About 70% of the population of ARoB are accessible by road and they all live on the main island. For the rest of the population, they can only be reached by boat with about 17% of the population living in remote areas where trekking is also required to reach them.

Fig. 1 Altitude Zones In ARoB



Appendix Four – Other Photographs



LLIN Distributions Around Arawa (Left) and Buka (Right)



Distributions In Buka (Left) And Boku (Right)



Distributions In Gagan (Left) And Scotolan (Right)



Transport Of Net To Gagan (Left) And Scotolan (Right)



Truck Transporting Nets To Kekesu (Left) And By Boat To Nisaan and The Attols (Right)



Distribution In Buka (Left) And Happy Customers In Morotona (Right)

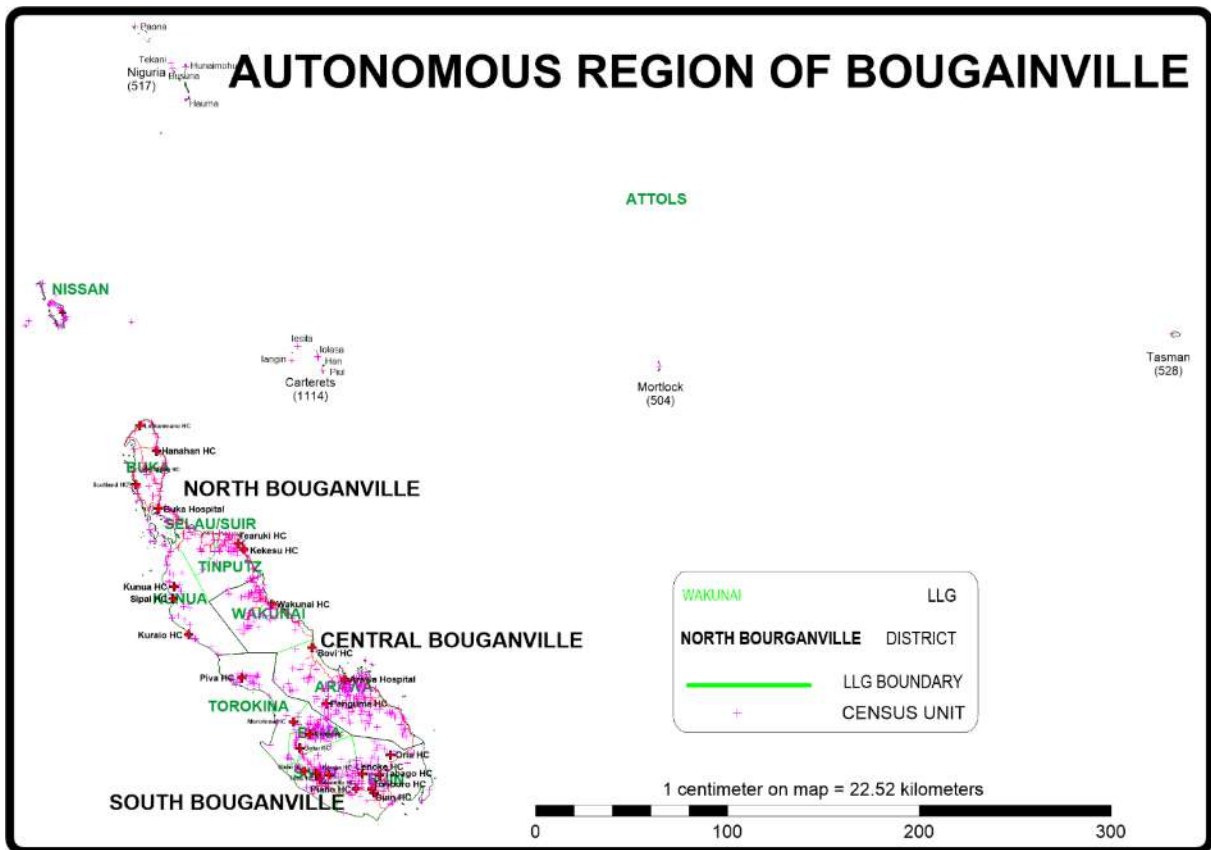


Happy Customers In Sinkodo (Left) and Gagan (Right)



Happy Customers In Hantoa

Appendix Five - Map Of ARoB Showing Census Points Of 2000 Census



ANNEX ONE

NORTH SOLOMONS PROVINCE NORTH BOUGANVILLE POPULATION 2022 LLIN DISTRIBUTION SUMMARY SHEET 2.080

LLG	WARD	VILLAGE	Estimated 2022 Population Based On 2000 Census	Estimated 2022 Population Based On 2019 Survey	Health Centre	Population Surveyed	House Holds Surveyed	Nets Issued	Date Of Distribution	Villages	Digicel	Emobile	Houses With Radios	Radio Networks	Comments
NORTH BOGANVILLE			152,023	152,023		143,501	28,644	73,689		259	232	34	6,928	191	
TINPUTZ			20,314	24,907		23,844	4,807	11,881		64	63	0	2	63	
56 TINPUTZ			6,978	9,834		9,674	1,927	4,784		27	27	0	2		
	23	Teokono	81	222	Tearouki HC	121	24	62	22.11.22	1	1	0	0	NBC Buka	Road
		Irua	204	255	Tearouki HC	165	27	76	22.11.22	1	1	0	0	NBC Buka	Road
		Teoguruguru	156	142	Tearouki HC	123	25	59	22.11.22	1	1	0	0	NBC Buka	Road
		Teabes	241	251	Tearouki HC	263	48	127	22.11.22	1	1	0	0	NBC Buka	Road
		Kovanis	510	643	Tearouki HC	656	143	326	22.11.22	1	1	0	0	NBC Buka	Road
		Pamets	389	368	Tearouki HC	379	64	199	18.11.22	1	1	0	0	NBC Buka	Road
		Vogog	252	257	Tearouki HC	192	33	86	17.11.22	1	1	0	0	NBC Buka	Road
		Deos	433	745	Tearouki HC	719	170	374	17.11.22	1	1	0	0	NBC Buka	Road
		Kespohit	333	777	Tearouki HC	741	150	362	17.11.22	1	1	0	0	NBC Buka	Road
		Hiahiv	144	169	Tearouki HC	198	41	94	20.11.22	1	1	0	0	NBC Buka	Road
		Pokapa 1	539	850	Tearouki HC	715	133	369	19.11.22	1	1	0	0	NBC Buka	Road
		Matakus	250	298	Tearouki HC	489	93	237	20.11.22	1	1	0	0	NBC Buka	Road
		Nemvahoo	239	217	Tearouki HC	285	50	133	21.11.22	1	1	0	0	NBC Buka	Road
		Pusuer	148	414	Tearouki HC	382	86	188	18.11.22	1	1	0	0	NBC Buka	Road
		Pohi	146	278	Tearouki HC	216	50	105	19.11.22	1	1	0	0	NBC Buka	Road
		Dahwon	289	553	Tearouki HC	415	100	210	18.11.22	1	1	0	0	NBC Buka	Road
		Teobuhin	815	524	Tearouki HC	527	92	252	18.11.22	1	1	0	2	NBC Buka	Road
		Nemsiriven	329	285	Tearouki HC	336	49	157	18.11.22	1	1	0	0	NBC Buka	Road
		Sipotavai	570	628	Tearouki HC	618	127	316	18.11.22	1	1	0	0	NBC Buka	Road
		Siptaan	279	291	Tearouki HC	204	36	102	17.11.22	1	1	0	0	NBC Buka	Road
		Tinputz Station	279	312	Tearouki HC	207	33	103	19.11.22	1	1	0	0	NBC Buka	Road
		Tinputz Primary School	85	0	Tearouki HC	210	41	100	18.11.22	1	1	0	0	NBC Buka	Road
		Torpanos Community Sch	270	534	Tearouki HC	383	74	181	19.11.22	1	1	0	0	NBC Buka	Road
		Teotopo		447	Tearouki HC	675	133	332	19.11.22	1	1	0	0	NBC Buka	Road
		Torobai		0	Tearouki HC	128	28	65	26.11.22	1	1	0	0	NBC Buka	Road
		Telepako		178	Kekesu HC	188	42	93	26.11.22	1	1	0	0	NBC Buka	Road
		Toresure		197	Kekesu HC	139	35	76	26.11.22	1	1	0	0	NBC Buka	Road
	TEOP		8,765	9,426		9,624	1,919	4,795		23	23	0	0		
	22	Pito	316	295	Tearouki HC	235	39	110	21.11.22	1	1	0	0	NBC Buka	Road
		Puskot	666	474	Tearouki HC	601	122	291	19.11.22	1	1	0	0	NBC Buka	Road
		Vaskuviri	356	374	Tearouki HC	302	63	156	19.11.22	1	1	0	0	NBC Buka	Road
		Pateaveave	77	365	Tearouki HC	363	75	179	19.11.22	1	1	0	0	NBC Buka	Road
		Wavunginua	497	223	Tearouki HC	180	39	95	21.11.22	1	1	0	0	NBC Buka	Road
		Suangu	545	842	Tearouki HC	721	139	357	21.11.22	1	1	0	0	NBC Buka	Road
		Teop Island	655	650	Tearouki HC	561	95	279	22.11.22	1	1	0	0	NBC Buka	Road
		Unonovi	179	176	Tearouki HC	162	37	85	22.11.22	1	1	0	0	NBC Buka	Road
		Sunvahoara	223	281	Tearouki HC	242	50	126	22.11.22	1	1	0	0	NBC Buka	Road
		Ikomori	526	855	Tearouki HC	666	175	345	23.11.22	1	1	0	0	NBC Buka	Road
		Teopasino	202	312	Tearouki HC	489	99	240	23.11.22	1	1	0	0	NBC Buka	Road
		Puskombu	356	445	Tearouki HC	384	71	191	23.11.22	1	1	0	0	NBC Buka	Road
		Kaskrus	453	467	Tearouki HC	490	87	243	23.11.22	1	1	0	0	NBC Buka	Road
		Namatoa	1,285	403	Tearouki HC	597	100	288	27.11.22	1	1	0	0	NBC Buka	Road
		Taurai	204	276	Tearouki HC	298	56	149	24.11.22	1	1	0	0	NBC Buka	Road
		Hantobin	137	453	Tearouki HC	500	107	253	24.11.22	1	1	0	0	NBC Buka	Road
		Takani	324	215	Tearouki HC	205	31	99	24.11.22	1	1	0	0	NBC Buka	Road
		Namasiora	582	642	Tearouki HC	665	127	318	21.11.22	1	1	0	0	NBC Buka	Road
		Iaun No.1	472	507	Tearouki HC	542	115	273	23.11.22	1	1	0	0	NBC Buka	Road
		Wapo Community School	206	128	Tearouki HC	161	34	78	21.11.22	1	1	0	0	NBC Buka	Road
		Tearuki C/Mission	235	607	Tearouki HC	859	171	425	22.11.22	1	1	0	0	NBC Buka	Road
		Kekesu Community School	268	159	Tearouki HC	225	56	128	22.11.22	1	1	0	0	NBC Buka	Road
		Wapo		279	Tearouki HC	176	31	87	21.11.22	1	1	0	0	NBC Buka	Road
	TAONITA		4,572	5,648		4,546	961	2,302		14	13	0	0		
	11	Iaun No.2	507	431	Kekesu HC	239	50	128	24.11.22	1	1	0	0	NBC Buka	Road
		Waropa	1,512	1,077	Kekesu HC	996	224	511	23.11.22	1	1	0	0	NBC Buka	Road
		Teahivia	277	267	Kekesu HC	239	44	117	23.11.22	1	1	0	0	NBC Buka	Road
		Suritabu	35	182	Kekesu HC	156	35	79	23.11.22	1	1	0	0	NBC Buka	Road
		Kehu	316	615	Kekesu HC	574	147	301	24.11.22	1	1	0	0	NBC Buka	Road
		Kotaita	295	891	Kekesu HC					1					Included In Wakunai HC
		Periovi	152	292	Kekesu HC	465	92	235	24.11.22	1	1	0	0	NBC Buka	Road
		Hoakop	324	322	Kekesu HC	261	36	128	24.11.22	1	1	0	0	NBC Buka	Road
		Koekavuta	324	319	Kekesu HC	231	45	110	20.11.22	1	1	0	0	NBC Buka	Road
		Pusbio	591	0	Kekesu HC	133	25	69	20.11.22	1	1	0	0	NBC Buka	Road
		Wasinobus Community Sc	237	566	Kekesu HC	78	17	40	20.11.22	1	1	0	0	NBC Buka	Road
		Topis		0	Kekesu HC	401	66	198	21.11.22	1	1	0	0	NBC Buka	Road
		Teagi		282	Kekesu HC	431	100	216	24.11.22	1	1	0	0	NBC Buka	Road
		Topo		401	Kekesu HC	342	80	170	25.11.22	1	1	0	0	NBC Buka	Road
				0											
KUNUA			18,904	19,832		17,730	4,002	9,475		53	47	10	894	47	
54 ISLANDS			3,975	3,440		3,266	669	1,707		11	11	10	310		
	11	Parobana	449	408	Buka UC	437	85	223	05.12.22	1	1	1	49	C N/SOLOM	Boat
		Skky	424	202	Buka UC	221	50	117	05.12.22	1	1	1	28	C N/SOLOM	Boat
		Karavat	150	137	Buka UC	119	30	71	05.12.22	1	1	1	15	C N/SOLOM	Boat
		Nsy	300	352	Buka UC	322	65	168	05.12.22	1	1	1	46	C N/SOLOM	Boat
		Sptt	266	370	Buka UC	374	94	191	05.12.22	1	1	1	3	C N/SOLOM	Boat

LLG	WARD	VILLAGE	Estimated 2022 Population Based On 2000 Census	Estimated 2022 Population Based On 2019 Survey	Health Centre	Population Surveyed	House Holds Surveyed	Nets Issued	Date Of Distribution	Villages	Digicel	Bmobile	Houses With Radios	Radio Networks	Comments
		Jupuno	449	228	Buka UC	220	39	115	05.12.22	1	1		25	C N/SOLOM	Boat
		Torojan	1,238	1,094	Buka UC	967	186	502	05.12.22	1	1	1	87	C N/SOLOM	Boat
		Toroar	451	261	Buka UC	228	49	117	05.12.22	1	1	1	22	C N/SOLOM	Boat
		Tamutz	156	147	Buka UC	158	22	81	05.12.22	1	1	1	18	C N/SOLOM	Boat
		Fatsitsian	92	149	Buka UC	150	34	82	05.12.22	1	1	1	16	C N/SOLOM	Boat
		Fatsigian		91	Buka UC	70	15	40	05.12.22	1	1	1	1	C N/SOLOM	Boat
	HAHON		3,507	4,756		3,967	879	2,078		11	11	0	245		
	11	Larum	366	538	Kunua HC	437	100	227	16.11.22	1	1	0	39	NBC	Road
		Kunopopo	462	536	Kunua HC	662	139	342	16.11.22	1	1	0	27	NBC	Road
		Nambarosi	537	554	Kunua HC	506	94	255	17.11.22	1	1	0	38	NBC	Road
		Kakapara	264	533	Kunua HC	274	46	141	16.11.22	1	1	0	25	NBC	Road
		Gotton	187	329	Kunua HC	198	50	102	17.11.22	1	1	0	4	NBC	Road
		Puto	387	640	Kunua HC	603	150	319	15.11.22	1	1	0	39	NBC	Road
		Rukusia	227	489	Kunua HC	335	100	180	15.11.22	1	1	0	45	NBC	Road
		Kukur	304	499	Kunua HC	418	80	230	17.11.22	1	1	0	21	NBC	Road
		Kunokomok	295	115	Kunua HC	96	33	57	15.11.22	1	1	0	1	NBC	Road
		Petspets	314	395	Kunua HC	292	68	151	15.11.22	1	1	0	3	NBC	Road
		Riau	164	128	Kunua HC	146	19	74	17.11.22	1	1	0	3	NBC	Road
	RAPOIS		8,249	7,967		6,954	1,691	3,769		19	19	0	252		
	19	Tosiavi	412	316	Kunua HC	327	70	172	18.11.22	1	1	0	10	NBC	Road
		Sikeo	408	311	Kunua HC	287	65	140	18.11.22	1	1	0	8	NBC	Road
		Mapisi	532	281	Kunua HC	254	50	123	18.11.22	1	1	0	14	NBC	Road
		Koatoroi	331	349	Kunua HC	288	99	157	18.11.22	1	1	0	10	NBC	Road
		Kepui	468	465	Kunua HC	323	78	166	17.11.22	1	1	0	2	NBC	Road
		Ubuiopei	485	457	Kunua HC	491	133	273	17.11.22	1	1	0	10	NBC	Road
		Kopaei	626	453	Kunua HC	507	113	268	21.11.22	1	1	0	12	NBC	Road
		Tohei	462	511	Sipa HC	585	128	317	17.11.22	1	1	0	20	NBC	Road
		Sisiapai	597	688	Sipa HC	512	196	300	18.11.22	1	1	0	86	NBC	Road
		Asitoki	578	653	Sipa HC	375	100	199	17.11.22	1	1	0	16	NBC	Road
		Keakara	597	498	Sipa HC	453	100	227	17.11.22	1	1	0	21	NBC	Road
		Kaviki	499	447	Sipa HC	512	100	268	17.11.22	1	1	0	1	NBC	Road
		Asitapai	485	572	Sipa HC	401	100	204	26.11.22	1	1	0	0	NBC	Road
		Amun	352	433	Kuraio HC	414	93	223	25.11.22	1	1	0	18	NBC	Boat
		Betaraio	730	798	Kuraio HC	512	118	306	26.11.22	1	1	0	9	NBC	Boat
		Aukei	241	300	Kuraio HC	289	61	164	25.11.22	1	1	0	0	NBC	Boat
		Kaupaitai	256	435	Kuraio HC	304	61	191	25.11.22	1	1	0	0	NBC	Boat
		Kunua Govt. Stn	60	0	Kunua HC	79	16	46	18.11.22	1	1	0	6	NBC	Road
		Sipai H.s.c	131	0	Kunua HC	41	10	25	22.11.22	1	1	0	9	NBC	Road
	KEREAKA		3,174	3,669		3,543	763	1,921		12	6	0	87		
	13	Atsinima	352	355	Kuraio HC					1					Included Under Pukuito
		Kaukas	878	967	Kuraio HC	988	230	521	25.11.22	1	1	0	0	NBC	Boat
		Kararitu	131	228	Kuraio HC	362	66	193	26.11.22	1	1	0	16	NBC	Boat
		Korepovi	426	467	Kuraio HC	454	92	248	25.11.22	1	1	0	16	NBC	Boat
		Muire	539	448	Kuraio HC	610	133	334	24.11.22	1	1	0	41	NBC	Boat
		Pukuito	171	197	Kuraio HC	434	121	259	24.11.22	1	1	0	2	NBC	Boat
		Rateovi	510	835	Kuraio HC	695	121	366	25.11.22	1	1	0	12	NBC	Road/Boat
		Korepovi Aid Post	73	0	Kuraio HC					1					Included Under Korepovi
		Korepovi Community Scho	8	13	Kuraio HC					1					Included Under Korepovi
		Kuraio Community School	29	13	Kuraio HC					1					Included Under Muire
		Kuraio H.s.c	37	24	Kuraio HC					1					Included Under Muire
		Kuraio Mission	6	0	Kuraio HC					1					Included Under Muire
		Atsinima Community Scho	15	121	Kuraio HC										Covered from Piwa HC
				0											
	SELAU \ SUIR		19,647	21,819		19,873	4,077	9,988		42	42	0	597	42	
	42 SOROM		4,707	6,038		4,943	1,049	2,513		8	8	0	113		
	8	Manob	1,030	1,079	Hantoa HC	380	100	203	16.11.22	1	1	0	22	NBC Buka	Road
		Ramundatta	626	525	Hantoa HC	306	72	157	15.11.22	1	1	0	7	NBC Buka	Road
		Sorom	401	404	Hantoa HC	376	88	187	15.11.22	1	1	0	0	NBC Buka	Road
		Gohi	1,007	1,087	Hantoa HC	918	190	451	15.11.22	1	1	0	13	NBC Buka	Road
		Langond	218	339	Hantoa HC	485	98	246	15.11.22	1	1	0	0	NBC Buka	Road
		Katsinkovere	678	524	Hantoa HC	431	100	215	15.11.22	1	1	0	8	NBC Buka	Road
		Kuskus	158	696	Hantoa HC	415	87	210	16.11.22	1	1	0	36	NBC Buka	Road
		Kokopau	589	1,384	Hantoa HC	1,632	314	844	15-21.11.22	1	1	0	27	NBC Buka	Road
	HANTOA		5,210	5,496		4,738	957	2,326		12	12	0	157		
	12	Sanakova	809	622	Hantoa HC	685	138	289	15.11.22	1	1	0	35	NBC Buka	Road
		Tortei	782	751	Hantoa HC	674	100	327	14.11.22	1	1	0	1	NBC Buka	Road
		Anake	587	419	Hantoa HC	401	77	207	14.11.22	1	1	0	24	NBC Buka	Road
		Ngalasuei	453	401	Hantoa HC	294	46	146	14.11.22	1	1	0	12	NBC Buka	Road
		Tipum	77	0	Hantoa HC	44	8	22	15.11.22	1	1	0	0	NBC Buka	Road
		Sokela	447	877	Hantoa HC	447	96	229	20-21.11.22	1	1	0	4	NBC Buka	Road
		Tangari	491	546	Hantoa HC	624	169	320	21.11.22	1	1	0	3	NBC Buka	Road
		Kawegoto	225	394	Hantoa HC	258	54	134	16.11.22	1	1	0	45	NBC Buka	Road
		Chundawan	308	289	Hantoa HC	274	46	126	22.11.22	1	1	0	1	NBC Buka	Road
		Tarbut	874	875	Hantoa HC	877	188	437	27.11.22	1	1	0	8	NBC Buka	Road
		Tarlana Stc	33	322	Hantoa HC	59	15	35	16.11.22	1	1	0	8	NBC Buka	Road
		Tarelana High School	125	0	Hantoa HC	101	20	54	16.11.22	1	1	0	16	NBC Buka	Road
	SIARA		2,567	3,026		2,953	616	1,496		6	6	0	29		
	6	Siara	884	1,104	Hantoa HC	1,108	213	551	21-23.11.22	1	1	0	24	NBC Buka	Road
		Rurei	643	857	Hantoa HC	777	180	395	22.11.22	1	1	0	0	NBC Buka	Road
		Papasa	422	288	Hantoa HC	216	50	113	22.11.22	1	1	0	2	NBC Buka	Road
		Ton	297	384	Hantoa HC	516	100	260	22.11.22	1	1	0	1	NBC Buka	Road
		Umun	148	129	Hantoa HC	133	28	73	23.11.22	1	1	0	2	NBC Buka	Road
		Omsan	173	264	Hantoa HC	203	45	104	23.11.22	1	1	0	0	NBC Buka	Road
	RAPOMA		828	974		972	191	485		3	3	0	28		

LLG	WARD	VILLAGE	Estimated 2022 Population Based On 2000 Census	Estimated 2022 Population Based On 2019 Survey	Health Centre	Population Surveyed	House Holds Surveyed	Nets Issued	Date Of Distribution	Villages	Digicel	Bmobile	Houses With Radios	Radio Networks	Comments
	3	Ratsua	385	478	Hantoa HC	434	87	213	16.11.22	1	1	0	13	NBC Buka	Road
		Porpor	227	309	Hantoa HC	355	66	181		1	1	0	12	NBC Buka	Road
		Matesiora	216	187	Hantoa HC	183	38	91		1	1	0	3	NBC Buka	Road
		SUIR COASTAL	792	1,740		1,308	267	658		3	3	0	37		
	3	Ramazon	204	291	Hantoa HC	305	59	145	23.11.22	1	1	0	0	NBC Buka	Road
		Wotsbou	185	241	Hantoa HC	200	44	115		1	1	0	4	NBC Buka	Road
		Tsunpets	404	1,208	Hantoa HC	803	164	398		1	1	0	33	NBC Buka	Road
		SUIR INLAND	5,543	4,546		4,959	997	2,510		10	10	0	233		
	10	Tatakuts	277	268	Hantoa HC	268	50	140	26.11.22	1	1	0	3	NBC Buka	Road
		Aravia	770	433	Hantoa HC	555	109	276	27.11.22	1	1	0	82	NBC Buka	Road
		Namkerio	788	722	Hantoa HC	760	150	377	26.11.22	1	1	0	31	NBC Buka	Road
		Tsitsiko	241	577	Hantoa HC	612	126	318	27.11.22	1	1	0	4	NBC Buka	Road
		Romsis	1,246	474	Hantoa HC	551	120	295	03.11.22	1	1	0	17	NBC Buka	Road
		Vakugo	510	533	Hantoa HC	715	136	360	28.11.22	1	1	0	17	NBC Buka	Road
		Voepoah	591	662	Hantoa HC	596	118	301	27.11.22	1	1	0	28	NBC Buka	Road
		Melalup	555	230	Hantoa HC	420	88	204	27.11.22	1	1	0	0	NBC Buka	Road
		Tapate	524	550	Hantoa HC	464	94	229	27.11.22	1	1	0	51	NBC Buka	Road
		Estosia Community Schoo	42	98	Hantoa HC	18	6	10	27.11.22	1	1	0	0	NBC Buka	Road
			0	0											
		BUKA	76,283	74,536		72,211	13,648	36,831		60	57	24	5,419	39	
	59	TSITALATO	10,206	7,899		7,494	1,465	3,853		6	6	6	838		
	6	Hangan	1,421	1,489	Buka UC2	968	184	506	28.11.22	1	1	1	161	C N/SOLOM	Road
		Malasang 1	1,296	868	Buka UC2	981	208	513	25.11.22	1	1	1	63	C N/SOLOM	Road
		Malasang 2	1,009	876	Buka UC2	1,026	199	530	25.11.22	1	1	1	174	C N/SOLOM	Road
		Malasang 3	1,379	1,165	Buka UC2	1,365	251	691	25.11.22	1	1	1	164	C N/SOLOM	Road
		Malasang 4		752	Buka UC2	536	98	276	25.11.22	1	1	1	66	C N/SOLOM	Road
		Lonahan	3,130	2,749	Buka UC2	2,618	525	1,337	25.11.22	1	1	1	210	C N/SOLOM	Road
		HAGOGOHE	9,143	7,330		7,351	1,336	3,736		9	9	9	844		
	9	Sing	1,816	1,454	Buka UC2	1,441	262	734	24.11.22	1	1	1	164	C N/SOLOM	Road
		Poposoko	788	655	Buka UC2	702	128	359	24.11.22	1	1	1	122	C N/SOLOM	Road
		Suhin	1,614	1,148	Buka UC2	1,161	183	585	23.11.22	1	1	1	139	C N/SOLOM	Road
		Gogohe 1	1,321	608	Buka UC2	835	126	420	23.11.22	1	1	1	90	C N/SOLOM	Road
		Gogohe 2	1,148	1,154	Buka UC2	848	168	433	23.11.22	1	1	1	54	C N/SOLOM	Road
		Tahetahe	1,300	1,007	Buka UC2	934	198	477	23.11.22	1	1	1	105	C N/SOLOM	Road
		Salasa	501	630	Buka UC2	817	162	418	23.11.22	1	1	1	100	C N/SOLOM	Road
		Malis	447	444	Buka UC2	403	70	205	23.11.22	1	1	1	40	C N/SOLOM	Road
		Pipisu	208	229	Buka UC2	210	39	105	24.11.22	1	1	1	30	C N/SOLOM	Road
		PEIT	15,670	15,540		14,110	2,877	7,219		13	13	0	9		
	13	Telatu	720	587	Gagan HC	636	113	309	18-19.11.22	1	1	0	0	95.5 FM	Road
		Kohino	1,294	1,251	Gagan HC	1,098	186	550	18-19.11.22	1	1	0	6	95.5 FM	Road
		Bekut	1,820	1,656	Gagan HC	1,655	333	876	21-22.11.22	1	1	0	0		Road
		Gagan	2,625	2,932	Gagan HC	2,638	565	1,326	22-23.11.22	1	1	0	0		Road
		Kohiso No.1	1,086	1,101	Gagan HC	969	177	473	17-18.11.22	1	1	0	0		Road
		Kohiso No.2	811	678	Gagan HC	891	168	448	17-18.11.22	1	1	0	0		Road
		Bei	842	752	Gagan HC	769	262	432	20-22.11.22	1	1	0	0		Boat
		Pororan	2,548	2,308	Gagan HC	1,770	341	918	20-21.11.22	1	1	0	0		Boat
		Hapan	1,387	1,351	Gagan HC	1,251	260	649	17-18.11.22	1	1	0	0		Road
		Barikua	1,032	1,091	Gagan HC	935	197	484	21-22.11.22	1	1	0	3	95.5 FM	Road
		Noupan	572	773	Gagan HC	719	124	356	18-19.11.22	1	1	0	0		Road
		Sapani	718	548	Gagan HC	316	60	158	21-22.11.22	1	1	0	0		Road
		Yagits	216	513	Gagan HC	463	91	240	20.11.22	1	1	0	0		Boat
		HALIA	11,668	12,378		11,206	2,048	5,545		9	9	0	1,028		
	9	Hahalais	2,059	2,864	Hanahan HC	2,602	454	1,279	16.11.22	1	1	0	313	NBC	Road
		Hanahan No.1	1,104	1,135	Hanahan HC	876	150	429	15.11.22	1	1	0	101	NBC	Road
		Hanahan No.2	1,845	1,686	Hanahan HC	775	164	396	15.11.22	1	1	0	47	NBC	Road
		Ilelilina	1,046	503	Hanahan HC	1,108	197	546	15.11.22	1	1	0	86	NBC	Road
		Banis	562	699	Hanahan HC	678	143	333	11.11.22	1	1	0	32	NBC	Road
		Hagus	626	954	Hanahan HC	882	149	439	14.11.22	1	1	0	68	NBC	Road
		Ketskets	1,647	1,627	Hanahan HC	1,577	297	772	14.11.22	1	1	0	181	NBC	Road
		Kotopan	884	704	Hanahan HC	681	143	350	14.11.22	1	1	0	68	NBC	Road
		Tohatsi	1,895	2,206	Hanahan HC	2,027	351	1,001	14.11.22	1	1	0	132	NBC	Road
		HAKU	17,003	15,532		14,611	2,576	7,459		6	6	0	504		
	6	Eitupan	1,955	1,947	emanmanu H	1,905	342	967	23.11.22	1	1	0	132		Road
		Hanpan	867	925	emanmanu H	771	144	385	23.11.22	1	1	0	0		Road
		Tanamalo	1,344	1,165	emanmanu H	1,072	196	538	22.11.22	1	1	0	0		Road
		Lemanmanu	4,081	3,403	emanmanu H	3,528	663	1,819	22.11.22	1	1	0	62		Road
		Lemankoa	4,615	4,077	emanmanu H	3,987	649	2,040	22.11.22	1	1	0	221		Road
		Lontis	4,141	4,014	emanmanu H	3,348	582	1,710	19.11.22	1	1	0	89		Road
		TONSU	8,661	6,386		6,900	1,277	3,557		10	8	3	340		
	10	Nokia	331	0	Buka UC2	269	50	136	28.11.22	1	1	1	49	C N/SOLOM	Road
		Novah No.1	853	940	Buka UC2	1,093	229	563	28.11.22	1	1	1	183	C N/SOLOM	Road
		Novah No.2	913	474	Buka UC2	563	112	286	28.11.22	1	1	1	71	C N/SOLOM	Road
		Kahule	668	553	Scotolan HC	516	86	266	05.12.22	1	1	0	1	NBC	Boat
		Tung	917	725	Scotolan HC	675	126	359	05.12.22	1	1	0	0		Boat
		Poka	1,019	650	Scotolan HC	589	129	318	05.12.22	1	1	0	0		Boat
		Hetal		324	Scotolan HC	515	87	245	05.12.22	1	0	0	0		Boat
		Petats	2,381	1,669	Scotolan HC	1,682	306	881	05-07.12.22	1	1	0	29	NBC	Boat
		Matsungan Island	1,034	675	Scotolan HC	635	91	321	05.12.22	1	1	0	7	NBC	Boat
		Scotland Mission	545	377	Scotolan HC	363	61	182	05-06.12.22	1	0	0	0		Boat/Vicinity
		BUKA URBAN	3,931	9,471		10,539	2,069	5,462		7	6	6	1,856		
	6	Hutjena	938	738	Buka UC2	656	113	334	28.11.22	1	1	1	106	C N/SOLOM	Road
		Kubu	718	1,611	Buka UC2	1,409	242	721	28.11.22	1	1	1	203	C N/SOLOM	Road
		Buka 03	295	1,997	Buka UC2	2,620	507	1,359	29.11.22	1	1	1	468	C N/SOLOM	Road
		Buka 04	892	532	Buka UC2	895	133	453	29.11.22	1	1	1	125	C N/SOLOM	Road

LLG	WARD	VILLAGE	Estimated 2022 Population Based On 2000 Census	Estimated 2022 Population Based On 2019 Survey	Health Centre	Population Surveyed	House Holds Surveyed	Nets Issued	Date Of Distribution	Villages	Digicel	Emobile	Houses With Radios	Radio Networks	Comments
		Sohano 1	801	1,398	Buka UC2	1,338	285	672	05.12.22	1	1	1	244	C N/SOLOM	Boat
		Sohano 2	287	0	Buka UC2					1					Included Under Sohano 1
		Ieta		3,196	Buka UC2	3,621	789	1,923	26.11.22	1	1	1	710	C N/SOLOM	Boat
			0	0											
NISSAN			11,907	8,010		6,799	1,412	3,969		31	23	0	16	0	
30	TUNGOL		4,357	3,136		2,707	600	1,654		14	10	0	16		
	13	Yotchibol	497	431	Nissan HC	381	76	231	22.11.22	1	1	0	0		Boat/ vehcle
		Tenaهران	381	274	Nissan HC	343	50	152	22.11.22	1	1	0	0		Boat/ vehcle
		Tapongal	520	408	Nissan HC	386	39	208	22.11.22	1	1	0	0		Boat/ vehcle
		Kulis	458	348	Nissan HC	233	48	135	25.11.22	1	1	0	0		Boat/ vehcle
		Gerei	358	310	Nissan HC	29	55	165	20.11.22	1	1	0	0		Boat/ vehcle
		Torohatap	445	312	Nissan HC	274	64	158	25.11.22	1	1	0	0		Boat/ vehcle
		Tanamalit	485	401	Nissan HC	371	79	223	21.11.22	1	1	0	0		Boat/ vehcle
		Kalio	250	146	Nissan HC	159	50	92	20.11.22	1	1	0	16		Boat/ vehcle
		Niukem	227	146	Nissan HC					1					Included Under Kalio
		Lahitan	204	229	Nissan HC	188	50	108	21.11.22	1	1	0	0		Boat/ vehcle
		Talehua 1	202	130	Nissan HC					1					Included Under Talehua 2
		Talehua 2	302	0	Nissan HC	343	89	182	21.11.22	1	1	0	0		Boat/ vehcle
		Tungol Mission	31	0	Nissan HC					1					Included Under Torohatap
		Karwaia Primary School		0	Nissan HC					1					Included Under Tapongal
	SIGON		5,676	3,798		3,101	608	1,822		14	10	0	0		
	14	Lihon 1	379	257	Nissan HC	206	42	137	23.11.22	1	1	0	0		Boat/ vehcle
		Siaken	512	326	Nissan HC	280	53	159	23.11.22	1	1	0	0		Boat/ vehcle
		Poriwon	530	397	Nissan HC	371	67	213	23.11.22	1	1	0	0		Boat/ vehcle
		Siar	397	308	Nissan HC	255	48	147	25.11.22	1	1	0	0		Boat/ vehcle
		Salipen	337	294	Nissan HC	264	50	151	24.11.22	1	1	0	0		Boat/ vehcle
		Balil	503	350	Nissan HC	727	144	426	25.11.22	1	1	0	0		Boat/ vehcle
		Sirof	285	248	Nissan HC	221	46	132	25.11.22	1	1	0	0		Boat/ vehcle
		Tartumpos	339	232	Nissan HC					1					Included Under Balil
		Lantong	354	294	Nissan HC					1					Included Under Balil
		Lihon 2	349	268	Nissan HC	260	48	160	23.11.22	1	1	0	0		Boat/ vehcle
		Lihon 3	435	362	Nissan HC	350	65	205	25.11.22	1	1	0	0		Boat/ vehcle
		Kalil Govt. Station	262	207	Nissan HC	167	45	92	25.11.22	1	1	0	0		Boat/ vehcle
		Nissan High School	986	200	Nissan HC					1					Included Under Balil
		Sigon Mission	8	56	Nissan HC					1					Included Under Pariwon
	PINEPAL		1,874	1,076		991	204	493		3	3	0	0		
	3	Mantoia	819	401	Nissan HC	353	66	182	25.11.22	1	1	0	0		Boat/ vehcle
		Teah	580	287	Nissan HC	279	50	153	25.11.22	1	1	0	0		Boat/ vehcle
		Rogos	474	388	Nissan HC	359	88	158	25.11.22	1	1	0	0		Boat/ vehcle
			0	0											
ATTOLS			4,967	2,917		3,044	698	1,545		9	0	0	0	0	
	12	CARTERETS	2,036	1,452		1,511	391	827		5	0	0	0		
	5	Han	824	615	Buka UC3	604	150	324	23.11.22	1	0	0	0		Boat
		Piul	447	284	Buka UC3	311	93	174	24.11.22	1	0	0	0		Boat
		Iangin	410	292	Buka UC3	264	71	154	25.11.22	1	0	0	0		Boat
		Iesila	154	139	Buka UC3	175	37	85	25.11.22	1	0	0	0		Boat
		Iolasa	202	122	Buka UC3	157	40	90	24.11.22	1	0	0	0		Boat
	TASMAN		965	707		853	150	349		1	0	0	0		
	1	Amotu	965	707	Buka UC3	853	150	349	05.12.22	1	0	0	0		Boat
	MORTLOCK		921	235		263	70	148		1	0	0	0		
	1	Nukutoa	921	235	Buka UC3	263	70	148	03.12.22	1	0	0	0		Boat
	NUGURIA/FEAD		1,044	523		417	87	221		2	0	0	0		
	5	Busuria	666	360	Buka UC3	260	57	134	26.11.22	1	0	0	0		Boat
		Tekani	21	0	Buka UC3										Abandoned
		Paona	56	0	Buka UC3										Abandoned
		Hunaimohu	12	0	Buka UC3										Abandoned
		Hauma	289	162	Buka UC3	157	30	87	26.11.22	1	0	0	0		Boat

ANNEX TWO

NORTH SOLOMONS PROVINCE CENTRAL BOUGANVILLE POPULATION 2022 LLIN DISTRIBUTION SUMMARY SHEET

LLG	WARD	VILLAGE	Estimated 2022 Population Based On 2000 Census	Estimated 2022 Population Based On 2019 Survey	Health Centre	Population Surveyed	House Holds Surveyed	Nets Issued	Date Of Distribution	Villages	Digicel	Bmobile	Houses With Radios	Radio Networks	Comments
CENTRAL BOUGANVILLE			101,423	101,423		96,579	21,297	49,316					5,475	120	
WAKUNAI			24,504	24,383		23,694	5,616	12,293		91	91	0	2,830	0	
86	ASSIGORO		4,217	4,389		4,534	1,041	2,315		13	13	0	603		
	12	Pipipaia	125	256	Wakunai HC	379	80	195	22.11.22	1	1	0	80		Road
		Nupatoro 2	369	499	Wakunai HC	414	81	209	21.11.22	1	1	0	81		Road
		Kuisiau	259	311	Wakunai HC	379	100	177	30.11.22	1	1	0	22		Road
		Pokoia	408	78	Wakunai HC	193	44	80	30.11.22	1	1	0	30		Road
		Pipia	418	307	Wakunai HC	277	61	122	30.11.22	1	1	0	39		Road
		Vikuroia	315	393	Wakunai HC	350	72	176	20.11.22	1	1	0	32		Road
		Kakaria	399	434	Wakunai HC	326	70	160	20.11.22	1	1	0	13		Road
		Teo-Aoao	354	231	Wakunai HC	235	60	123	20.11.22	1	1	0	44		Road
		Kosiai	122	195	Wakunai HC	208	55	111	21.11.22	1	1	0	55		Road
		Toreraiva	340	532	Wakunai HC	452	100	234	25.11.22	1	1	0	70		Road
		Atorao	484	383	Wakunai HC	345	81	212	27.11.22	1	1	0	36		Road
		Kakarapaia	623	248	Wakunai HC	784	200	408	22.11.22	1	1	0	64		Road
		Asitavi		524	Wakunai HC	192	37	108	20.11.22	1	1	0	37		Road
	BOHI		7,853	6,637		6,152	1,396	3,224		28	28	0	692		
	27	Kukuais	638	74	Wakunai HC	122	28	63	29.11.22	1	1	0	4		Trek
		Asitai	54	110	Wakunai HC	117	25	52	29.11.22	1	1	0	0		Trek
		Pisikoaia	196	54	Wakunai HC	36	6	16	29.11.22	1	1	0	2		Trek
		Anutokoru	174	59	Wakunai HC	45	9	23	25.11.22	1	1	0	2		Trek
		Kusi	296	68	Wakunai HC	112	23	53	25.11.22	1	1	0	2		Trek
		Sirivia	562	91	Wakunai HC	131	24	64	29.11.22	1	1	0	15		Trek
		Vaiano	575	105	Wakunai HC	93	19	45	29.11.22	1	1	0	5		Trek
		Kakupaunui	137	90	Wakunai HC	84	17	40	29.11.22	1	1	0	0		Trek
		Siroravia	164	0	Wakunai HC	106	19	46	29.11.22	1	1	0	0		Road
		Ariariko	440	0	Wakunai HC	379	100	195	01.11.22	1	1	0	12		Road
		Rateri	330	239	Wakunai HC	166	50	91	01.12.22	1	1	0	10		Road
		Tubitubin	484	0	Wakunai HC	397	87	181	01.12.22	1	1	0	36		Road
		Kukuauvo	540	539	Wakunai HC	602	125	287	27.11.22	1	1	0	25		Road
		Tokorobo	169	228	Wakunai HC	156	72	146	27.11.22	1	1	0	16		Road
		Tapitoea	205	141	Wakunai HC	147	35	75	27.11.22	1	1	0	15		Road
		Turima	352	231	Wakunai HC	22	50	115	27.11.22	1	1	0	27		Road
		Teakiris	120	166	Wakunai HC	68	14	33	27.11.22	1	1	0	9		Road
		Tesuru	176	260	Wakunai HC	255	44	148	18.11.22	1	1	0	32		Road
		Tokai	296	297	Wakunai HC	137	31	70	18.11.22	1	1	0	30		Road
		Steamas	130	241	Wakunai HC	299	48	126	18.11.22	1	1	0	40		Road
		Ruesta	59	238	Wakunai HC	168	37	105	18.11.22	1	1	0	37		Road
		Periove	161	465	Wakunai HC	213	53	112	18.11.22	1	1	0	48		Road
		Riko	137	553	Wakunai HC	551	133	280	18.11.22	1	1	0	91		Road
		Kotoita	249	506	Wakunai HC	683	100	323	18.11.22	1	1	0	100		Road
		Inivus	516	649	Wakunai HC	384	100	202	29.11.22	1	1	0	62		Road
		Teohiup	421	754	Wakunai HC	388	85	190	29.11.22	1	1	0	56		Road
		Tearaka	274	260	Wakunai HC	225	50	112	29.11.22	1	1	0	6		Road
		Kuiroko		218	Wakunai HC	66	12	31	29.11.22	1	1	0	10		Road
	EWARA \ PAPANA		4,992	6,765		6,125	1,556	3,284		23	23	0	717		
	21	Viruvirupa	301	177	Wakunai HC										Non Existant
		Iniruevia	154	187	Wakunai HC	204	50	108	17.11.22	1	1	0	35		Road
		Okuvupaia	24	209	Wakunai HC	310	84	170	17.11.22	1	1	0	42		Road
		Rakai	159	213	Wakunai HC										Non Existant
		Barora	159	171	Wakunai HC	98	25	48	25.11.22	1	1	0	16		Road
		Maras	244	262	Wakunai HC	245	63	126	27.11.22	1	1	0	33		Road
		Teperoi	577	579	Wakunai HC	452	92	236	27.11.22	1	1	0	55		Road
		Kavoira	472	548	Wakunai HC	367	100	203	26.11.22	1	1	0	0		Road
		Kiviri / Numa	594	523	Wakunai HC	509	125	285	28.11.22	1	1	0	124		Road
		Rearivi	259	244	Wakunai HC	220	50	111	27.11.22	1	1	0	37		Road
		Arubu	147	190	Wakunai HC	49	12	25	27.11.22	1	1	0	4		Road
		Topipa	51	182	Wakunai HC	192	50	93	26.11.22	1	1	0	0		Road
		Barani	332	201	Wakunai HC	201	48	106	26.11.22	1	1	0	0		Road
		Iparaka	112	207	Wakunai HC	54	12	26	27.11.22	1	1	0	0		Road
		Kuruvetuo	161	181	Wakunai HC	131	35	64	26.11.22	1	1	0	0		Road
		Utosi	149	63	Wakunai HC	101	21	49	26.11.22	1	1	0	10		Road
		Kaparosipa	152	278	Wakunai HC	242	49	116	26.11.22	1	1	0	3		Road
		Laikoia	156	267	Wakunai HC	176	40	95	26.11.22	1	1	0	21		Road
		Mapearo	130	0	Wakunai HC										Non Existant
		Keruvaipa	164	202	Wakunai HC	173	47	94	17.11.22	1	1	0	40		Road
		Wakunai Station	494	540	Wakunai HC	451	120	251	22.11.22	1	1	0	118		Road
		Numa Pltn		377	Wakunai HC	372	100	176	28.11.22	1	1	0	0		Road
		Mabiri		347	Wakunai HC	435	100	230	17.11.22	1	1	0	64		Road
		Compound		212	Wakunai HC										Non Existant
		Oravatais		0	Wakunai HC	185	50	93	27.11.22	1	1	0	32		Road
		Numa 1-3		403	Wakunai HC	309	100	158	28.11.22	1	1	0	0		Road
		Arigua		NEW	Wakunai HC	649	183	421	17.11.22	1	1	0	83		Road
	ROKOKAS		7,442	6,592		6,883	1,623	3,470		27	27	0	818		
	26	Kakasipa	401	237	Ruruvu SHC	214	50	106	24.11.22	1	1	0	26		Road

LLG	WARD	VILLAGE	Estimated 2022 Population Based On 2000 Census	Estimated 2022 Population Based On 2019 Survey	Health Centre	Population Surveyed	House Holds Surveyed	Nets Issued	Date Of Distribution	Villages	Digicel	Bmobile	Houses With Radios	Radio Networks	Comments
		Togarao	592	306	Ruruvu SHC	118	27	60	24.11.22	1	1	0	22		Road
		Uriora	220	137	Ruruvu SHC	277	72	148	24.11.22	1	1	0	53		Trek
		Raurau	465	201	Ruruvu SHC	202	49	107	24.11.22	1	1	0	37		Trek
		Verarusi	171	116	Ruruvu SHC	93	25	47	25.11.22	1	1	0	3		Trek
		Ruruvu	531	447	Ruruvu SHC	321	84	181	24.11.22	1	1	0	62		Road
		Orupa	391	199	Ruruvu SHC	257	58	127	29.11.22	1	1	0	14		Road
		Oriva	166	168	Ruruvu SHC	40	9	22	29.11.22	1	1	0	6		Trek
		Sisivi	526	489	Ruruvu SHC	643	150	314	29.11.22	1	1	0	80		Trek
		Karauturi	553	220	Ruruvu SHC	348	72	170	28.11.22	1	1	0	14		Road
		Kuritaturi	103	226	Ruruvu SHC	309	100	193	29.11.22	1	1	0	40		Road
		Virupatao	49	41	Ruruvu SHC	468	100	241	28.11.22	1	1	0	0		Trek
		Tuvakopa	218	279	Ruruvu SHC	242	50	123	25.11.22	1	1	0	20		Road/Trek
		Teokon	257	364	Ruruvu SHC	397	100	206	24.11.22	1	1	0	46		Road
		Ustokoru	208	297	Ruruvu SHC	203	50	106	28.11.22	1	1	0	33		Road
		Karekarewa	399	221	Ruruvu SHC	473	100	217	29.11.22	1	1	0	70		Road
		Orauri	399	206	Ruruvu SHC	212	49	98	28.11.22	1	1	0	43		Trek
		Kareipa	181	105	Ruruvu SHC	199	42	81	29.11.22	1	1	0	38		Trek
		Burisotol	125	0	Ruruvu SHC	203	39	85	29.11.22	1	1	0	39		Road
		Kiva	200	103	Ruruvu SHC	105	29	50	29.11.22	1	1	0	0		Trek
		Kokotora	166	274	Ruruvu SHC	60	18	35	29.11.22	1	1	0	0		Trek
		Utotoa	154	188	Ruruvu SHC					1	1	0	0		Included Under Orauri
		Sorosipaia	225	275	Ruruvu SHC	559	108	278	29.11.22	1	1	0	99		Trek
		Ibu	746	286	Ruruvu SHC	379	100	188	28.11.22	1	1	0	44		Trek
		Tarakoa		739	Ruruvu SHC	262	63	129	29.11.22	1	1	0	14		Trek
		Atasiapa		158	Ruruvu SHC	229	61	125	29.11.22	1	1	0	15		Trek
		Tutupaio		311	Ruruvu SHC	70	18	33	29.11.22	1	1	0	0		Trek
ARAWA			76,919	78,359		72,885	15,681	37,023		236	131	84	2,645	120	
209 KOKODA			6,259	8,366		8,324	1,788	4,306		28	16	0	71		
	28	Takee	985	538	Koromira HC	424	100	231	26.11.22	1	0	0	0		Trek
		Tuareku	298	330	Koromira HC	279	57	148	26.11.22	1	0	0	0		Trek
		Amuapong	428	226	Koromira HC	207	50	104	26.11.22	1	0	0	2		Trek
		Siorovi	831	427	Koromira HC	419	91	238	26.11.22	1	0	0	0		Trek
		Pontana	164	193	Koromira HC	199	42	105	27.11.22	1	1	0	2		Trek
		Minani	328	202	Koromira HC	195	43	103	29.11.22	1	1	0	0		Trek
		Sirovai	86	456	Koromira HC	404	65	201	27.11.22	1	0	0	0		Trek
		Pika'a	181	212	Koromira HC	208	37	106	28.11.22	1	0	0	0		Trek
		Kamarove	323	239	Koromira HC	207	49	112	29.11.22	1	0	0	0		Trek
		Dota-Bareosi	191	302	Koromira HC	250	50	122	28.11.22	1	1	0	9		Trek
		Muniasi	242	277	Koromira HC	236	62	126	29.11.22	1	1	0	5		Trek
		Bona	232	180	Koromira HC	158	30	81	28.11.22	1	1	0	0		Trek
		Mangouna	193	240	Koromira HC	201	46	104	01.12.22	1	0	0	16		Trek
		Kororo	159	123	Koromira HC	113	29	62	29.11.22	1	1	0	1		Trek
		Domena	225	178	Koromira HC	167	38	90	29.11.22	1	1	0	17		Trek
		Sipurei	279	218	Koromira HC	212	48	114	29.11.22	1	1	0	0		Three day trek
		Pevana	284	418	Koromira HC	375	91	197	29.11.22	1	1	0	0		Trek
		Posinami	183	116	Koromira HC	84	15	43	27.11.22	1	0	0	0		Trek
		Taura	188	223	Koromira HC	277	50	141	29.11.22	1	0	0	1		Trek
		Babedosi	230	236	Koromira HC	238	50	125	24.11.22	1	1	0	2		Trek
		Pirunava	230	272	Koromira HC	275	66	140	28.11.22	1	1	0	0	NBC	Trek
		Pania / Loliliu		418	Koromira HC	552	65	269	23.11.22	1	0	0	0		Trek
		Tava tava		695	Koromira HC	775	168	382	23.11.22	1	1	0	0		Trek
		Navuia		325	Koromira HC	335	82	168	23.11.22	1	0	0	1		Trek
		Tororei		441	Koromira HC	436	79	212	23.11.22	1	1	0	3		Trek
		Warana		196	Koromira HC	307	63	148	23.11.22	1	1	0	0		Trek
		loro		255	Koromira HC	253	50	135	23.11.22	1	1	0	0		Trek
		Pirineu 1/2		428	Koromira HC	538	172	299	24.11.22	1	1	0	12		Trek
	TORAU		2,902	2,495		2,019	467	1,029		5	5	3	72		Coastal
	4	Rorovana 1	1,090	420	Arawa Hos	396	100	193	17.11.22	1	1	1	0	ew Dawn/F	Road
		Rorovana 2	787	506	Arawa Hos	250	64	138	17.11.22	1	1	1	0	ew Dawn/F	Road
		Vito	557	548	Manetai HC	508	123	258	16.11.22	1	1	0	6		Road
		Tarara	467	564	Manetai HC	430	101	227	16.11.22	1	1	0	0		Road
		Rorovana 3		457	Arawa Hos	435	79	213	17.11.22	1	1	1	66		Road
	KONGARA No 1		4,802	3,071		3,400	679	1,678		15	0	0	153		
	12	Mangtangtai	232	0	Arawa Hos	137	31	69	20.11.22	1	0	0	0	ew Dawn/F	Road/Trek
		Sianava	188	256	Arawa Hos	170	39	88	20.11.22	1	0	0	23		Road/Trek
		Da'ate	367	0	Arawa Hos	129	25	65	20.11.22	1	0	0	16	ew Dawn/F	Road/Trek
		Muaua	479	238	Arawa Hos	286	70	144	30.11.22	1	0	0	20		Road/Trek
		Dopori	396	210	Arawa Hos	232	18	110	20.11.22	1	0	0	0	ew Dawn/F	Road/Trek
		Ma'asi	222	0	Arawa Hos	133	24	68	20.11.22	1	0	0	0		Road/Trek
		Kauru	425	400	Arawa Hos	282	64	133	20.11.22	1	0	0	14		Road/Trek
		Kuritave	161	249	Arawa Hos	163	37	80	20.11.22	1	0	0	0		Road/Trek
		Sipuru	550	425	Arawa Hos	433	73	203	20.11.22	1	0	0	11	ew Dawn/F	Road/Trek
		Damung	1,056	546	Arawa Hos	453	98	233	17.04.22	1	0	0	0	ew Dawn/F	Road/Trek
		Daru			Arawa Hos	262	49	128	28.11.22	1	0	0	43		
		Maraino	411	270	Arawa Hos	130	31	68	20.11.22	1	0	0	0		Road/Trek
		Tuinai	313	277	Arawa Hos	409	86	201	20.11.22	1	0	0	26		Road/Trek
		Asiko	0	92	Arawa Hos	84	16	40	20.11.22	1	0	0	0		Road/Trek
		Biro pang	0	108	Arawa Hos	97	18	48	20.11.22	1	0	0	0		Road/Trek
	KONGARA No 2		4,726	1,961		2,151	395	1,063		10	0	0	0		
	10	Inmarura	362	0	Arawa Hos	226	41	130	30.11.22	1	0	0	0		Road/Trek
		Bakakani	293	178	Arawa Hos	105	12	50	30.11.22	1	0	0	0	ew Dawn/F	Island/Boat

LLG	WARD	VILLAGE	Estimated 2022 Population Based On 2000 Census	Estimated 2022 Population Based On 2019 Survey	Health Centre	Population Surveyed	House Holds Surveyed	Nets Issued	Date Of Distribution	Villages	Digicel	Bmobile	Houses With Radios	Radio Networks	Comments
		Kapikave	831	106	Arawa Hos	77	16	38	30.11.22	1	0	0	0	ew Dawn/F	Road/Trek
		Keremona	523	277	Arawa Hos	325	74	157	30.11.22	1	0	0	0		Road/Trek
		Kunurua	572	157	Arawa Hos	120	27	59	30.11.22	1	0	0	0	ew Dawn/F	Road/Trek
		Isina	579	195	Arawa Hos	261	50	129	30.11.22	1	0	0	0	ew Dawn/F	Road/Trek
		Dongeta	665	275	Arawa Hos	356	69	173	30.11.22	1	0	0	0		Road/Trek
		Banei	330	257	Arawa Hos	305	50	147	30.11.22	1	0	0	0		Road/Trek
		Pitoka	134	0	Arawa Hos	189	40	90	30.11.22	1	0	0	0		Road/Trek
		Damuna	435	518	Arawa Hos	187	16	90	30.11.22	1	0	0	0	ew Dawn/F	Road/Trek
	EIVO 1		14,021	10,866		10,683	2,325	5,515		19	9	0	45		
	18	Atamo	887	600	Manetai HC	605	181	328	17.11.22	1	1	0	0		Road/Trek
		Uruto	804	747	Manetai HC	616	135	308	18.11.22	1	0	0	0		Road/Trek
		Kanavito	1,489	699	Manetai HC	651	134	321	18.11.22	1	0	0	1		Road/Trek
		Nasiwawau	953	357	Manetai HC	395	105	224	21.11.22	1	0	0	0		Road/Trek
		Kopikiri	550	334	Manetai HC	530	113	274	20.11.22	1	1	0	0		Road/Trek
		Kopani	971	1,312	Manetai HC	1,006	203	506	22.11.22	1	1	0	0		Road/Trek
		Bovi	966	692	Manetai HC	930	191	489	18.11.22	1	1	0	6		Road/Trek
		Sisiupa/kopani 2	1,993	525	Manetai HC	160	50	100	30.03.23	1	1	0	0		Trek
		Karato	435	476	Piwa HC	408	72	205	28.11.22	1	0	0	1		Boat/Trek
		Karikopa	367	190	Piwa HC	154	27	76	29.11.22	1	0	0	0		Boat/Trek
		Dakapa	440	397	Piwa HC	254	50	132	30.11.22	1	0	0	0		Boat/Trek
		Ketuarapa	768	553	Piwa HC	458	86	235	28.11.22	1	0	0	14		Boat/Trek
		Korovi	535	427	Piwa HC	284	64	148	30.11.22	1	0	0	0		Boat/Trek
		Kavasia	308	150	Piwa HC	242	47	124	29.11.22	1	0	0	0		Boat/Trek
		Reini	489	366	Piwa HC	290	44	149	29.11.22	1	0	0	0		Boat/Trek
		Turipan	1,403	2,066	Manetai HC	1,570	375	800	18.11.22	1	1	0	15		Road/Trek
		Allan	264	420	Manetai HC	561	98	272	20.11.22	1	1	0	4		Road/Trek
		Dupan	399	555	Manetai HC	576	121	298	19.11.22	1	1	0	1		Road/Trek
		Mabiri	0	1,319	Manetai HC	993	229	526	16.11.22	1	1	0	3		Road/Trek
	EIVO 2		5,792	6,083		5,038	1,074	2,470		9	4	0	6		
	8	Siuema	1,134	962	Paruparu HC	779	155	385	22.11.22	1	1	0	1		Trek
		Kokomate	597	588	Paruparu HC	397	98	193	22.11.22	1	1	0	0		Trek
		Sipuru	773	465	Paruparu HC	372	83	188	23.11.22	1	0	0	0		Trek
		Sirovai	905	585	Paruparu HC	531	150	265	22.11.22	1	0	0	0		Trek
		Mainoki	836	544	Paruparu HC	503	97	243	23.11.22	1	0	0	0		Trek
		Kaspeke	293	356	Paruparu HC	262	50	129	23.11.22	1	0	0	0		Trek
		Borumai	626	1,155	Paruparu HC	943	187	465	19.11.22	1	1	0	1		Trek
		Boira	628	1,429	Paruparu HC	1,251	254	602	18.11.22	1	1	0	4		Road and Trek
		Kossia	0	0	Paruparu HC					1					Included Under Kokomate
	EIVO 3		2,247	2,245		2,313	423	1,170		7	1	0	1		Mountains
	7	Tonanau	315	149	Panguna HC	141	25	69	15.11.22	1	0	0	0		Trek
		Pokunamering	619	569	Panguna HC	496	100	249	20.11.22	1	0	0	0		Road
		Dupanta	171	189	Panguna HC	146	27	72	20.11.22	1	0	0	0		Road
		Koonu-Uk'u	381	646	Panguna HC	690	135	351	19.11.22	1	1	0	0		Road
		Karapong	396	109	Panguna HC	295	35	147	20.11.22	1	0	0	0		Trek
		Tenkona	210	315	Panguna HC	396	70	206	20.11.22	1	0	0	0		Road
		Sipukoo	154	268	Panguna HC	149	31	76	16.11.22	1	0	0	1		Road
	BAVA PIRUNG		6,706	6,198		5,633	1,243	2,841		28	28	28	530		
	24	Tavidua	310	200	Arawa Hos	178	43	92	22.11.22	1	1	1	0	ew Dawn/F	Road
		Bonamung	511	328	Arawa Hos	250	17	121	22.11.22	1	1	1	0	ew Dawn/F	Road
		Taurapera	171	275	Arawa Hos	301	93	168	22.11.22	1	1	1	61	ew Dawn/F	Road
		Makeniko	137	127	Arawa Hos	143	31	70	22.11.22	1	1	1	0	ew Dawn/F	Road
		Siboronto	220	161	Arawa Hos	135	21	68	29.11.22	1	1	1	18	ew Dawn/F	Road
		Toborai	364	285	Arawa Hos	229	42	109	22.11.22	1	1	1	26	ew Dawn/F	Road
		Pokpok	484	376	Arawa Hos	362	87	184	23.11.22	1	1	1	69	ew Dawn/F	Boat
		Sipa	61	160	Arawa Hos	130	34	64	25.11.22	1	1	1	0	ew Dawn/F	Road
		Sisirai	335	289	Arawa Hos	301	60	132	27.11.22	1	1	1	18	ew Dawn/F	Road
		Taveromai	364	187	Arawa Hos	205	46	103	25.11.22	1	1	1	0	ew Dawn/F	Road
		Karakung	377	175	Arawa Hos	319	77	159	22.11.22	1	1	1	31	ew Dawn/F	Road
		Angkanai	672	304	Arawa Hos	200	43	93	23.11.22	1	1	1	5	ew Dawn/F	Road
		Dinguna	200	296	Arawa Hos	299	68	159	30.11.22	1	1	1	11	ew Dawn/F	Road
		Bunumang	252	0	Arawa Hos	172	32	89	27.11.22	1	1	1	15	ew Dawn/F	Road
		Mauang	95	0	Arawa Hos	32	10	17	24.11.22	1	1	1	0	ew Dawn/F	Road
		Tokiai	183	332	Arawa Hos	263	61	136	23.11.22	1	1	1	50	ew Dawn/F	Road
		Pidia	203	491	Arawa Hos	156	40	75	22.11.22	1	1	1	0	ew Dawn/F	Road
		Kobuan	332	444	Arawa Hos	353	77	163	21.11.22	1	1	1	60	ew Dawn/F	Road
		Kuku/pankana/Boroku	450	276	Arawa Hos	137	35	73	20.11.22	1	1	1	28	ew Dawn/F	Road
		Widoi	205	0	Arawa Hos	162	35	83	22.11.22	1	1	1	0	ew Dawn/F	Road
		Todutodu	237	87	Arawa Hos	80	23	44	23.11.22	1	1	1	15	ew Dawn/F	Road
		Manuana	95	181	Arawa Hos	168	33	84	25.11.22	1	1	1	33	ew Dawn/F	Road
		Uruna'a	237	169	Arawa Hos	164	38	91	27.11.22	1	1	1	38	ew Dawn/F	Road
		Parunavero	208	205	Arawa Hos	111	27	55	22.11.22	1	1	1	0	ew Dawn/F	Road
		Toniva	0	325	Arawa Hos	317	72	170	22.11.22	1	1	1	0	ew Dawn/F	Road
		Kivirai	0	177	Arawa Hos	142	22	68	22.11.22	1	1	1	0	ew Dawn/F	Road
		Keuru	0	128	Arawa Hos	165	36	80	21.11.22	1	1	1	27	ew Dawn/F	Road
		Kieta village	0	222	Arawa Hos	159	40	91	25.11.22	1	1	1	25	ew Dawn/F	Road
	NORTH NASIOI		5,743	4,065		4,154	765	2,071		24	23	23	176		
	21	Tsinkai	213	188	Arawa Hos	153	39	75	29.11.22	1	1	1	0	ew Dawn/F	Road
		Mankongtoro	345	187	Arawa Hos	133	45	73	24.11.22	1	1	1	0	ew Dawn/F	Road
		Karkira	78	0	Arawa Hos	180	34	88	24.11.22	1	1	1		New Dawn/F	Road
		Damaosi	86	118	Arawa Hos	135	16	66	24.11.22	1	1	1	0	ew Dawn/F	Road
		Laita	147	95	Arawa Hos					1					Included Under Tamaisi
		Tamaisi	90	81	Arawa Hos	84	12	41	24.11.22	1	1	1	0	ew Dawn/F	Road

LLG	WARD	VILLAGE	Estimated 2022 Population Based On 2000 Census	Estimated 2022 Population Based On 2019 Survey	Health Centre	Population Surveyed	House Holds Surveyed	Nets Issued	Date Of Distribution	Villages	Digicel	Bmobile	Houses With Radios	Radio Networks	Comments
		Wamoi	159	61	Arawa Hos	74	11	37	30.11.22	1	1	1	0	ew Dawn/F	Road
		Siae	513	235	Arawa Hos	242	50	123	24.11.22	1	1	1	0	ew Dawn/F	Road
		Sivuna	203	182	Arawa Hos	99	22	48	30.11.22	1	1	1	22	ew Dawn/F	Road
		Takoo	364	179	Arawa Hos	34	6	17	23.11.22	1	1	1	0	ew Dawn/F	Road
		Poma	396	147	Arawa Hos	354	25	166	23.11.22	1	1	1	0	ew Dawn/F	Road
		Tonara	56	221	Arawa Hos	165	13	86	23.11.22	1	1	1	10	ew Dawn/F	Road
		Kupei	474	312	Arawa Hos	385	20	194	01.02.23	1	1	1	10	ew Dawn/F	Road
		Kaino	220	131	Arawa Hos	159	45	80	25.11.22	1	1	1	42	ew Dawn/F	Road
		Bakavori	218	221	Arawa Hos	206	49	104	25.11.22	1	1	1	0	ew Dawn/F	Road
		Turampa	242	57	Arawa Hos	221	50	112	01.02.23	1	1	1	39	ew Dawn/F	Road
		Amiong	386	277	Arawa Hos	249	57	126	24.11.22	1	1	1	0	ew Dawn/F	Road
		Topinang	707	570	Arawa Hos	431	90	213	24.11.22	1	1	1	0	ew Dawn/F	Road
		Pavaere	707	140	Arawa Hos	166	36	80	23.11.22	1	1	1	32	ew Dawn/F	Road
		Amunai	54	127	Arawa Hos	54	9	27	23.11.22	1	1	1	6	ew Dawn/F	Road
		Rumba SDA	86	106	Arawa Hos	99	19	48	23.11.22	1	1	1	0	ew Dawn/F	Road
		Dokotoro	0	67	Arawa Hos	91	25	44	24.11.22	1	1	1	15	ew Dawn/F	Road
		Kuri	0	213	Arawa Hos	232	50	117	22.11.22	1	1	1	0	ew Dawn/F	Road
		Parini	0	150	Arawa Hos	208	42	106	23.11.22	1	1	1	0	ew Dawn/F	Road
		APIATEI	1,863	2,139		1,957	440	993		13	13	12	233		
	10	Bairima	220	181	Arawa Hos	191	45	92	23.11.22	1	1	1	0	ew Dawn/F	Road
		Donsiro	474	108	Arawa Hos	136	34	66	17.11.22	1	1	1	25	ew Dawn/F	Road
		Pomaua	350	180	Arawa Hos	185	40	94	30.11.22	1	1	1	27	ew Dawn/F	Road
		Baiaruai	164	266	Arawa Hos	106	15	55	19.11.22	1	1	1	14	ew Dawn/F	Road
		Don-Otong	90	0	Arawa Hos	31	8	15	17.11.22	1	1	1	4	ew Dawn/F	Road
		Siorovi	76	0	Arawa Hos	84	18	41	17.11.22	1	1	1	15	ew Dawn/F	Road
		Kirua		NEW	Arawa Hos	107	29	57	17.11.22	1	1	1	12	ew Dawn/F	Road
		Kometu	64	0	Arawa Hos	77	21	40	17.11.22	1	1	1	14	ew Dawn/F	Road
		Siroe	132	159	Arawa Hos	111	28	59	17.11.22	1	1	1	22	ew Dawn/F	Road
		Arawa	191	377	Arawa Hos	320	75	156	17.11.22	1	1	1	45	ew Dawn/F	Road
		Itakara	103	371	Arawa Hos	239	42	129	17.11.22	1	1	1	53	ew Dawn/F	Road
		Itakara	0	298	Panguna HC	171	41	91	17.11.22	1	1	0	2	ew Dawn/F	Road
		Omaia	0	199	Arawa Hos	199	44	98	17.11.22	1	1	1	0	ew Dawn/F	Road
		SOUTH NASIOI	9,784	9,657		8,666	2,130	4,395		26	1	1	358		
	28	Nasioi	401	170	Arawa Hos	148	44	77	22.11.22	1	0	0	20	ew Dawn/F	Road
		Unavato	445	234	Arawa Hos	147	42	83	22.11.22	1	0	0	0	ew Dawn/F	Road
		Matangakung	220	105	Arawa Hos	63	28	40	22.11.22	1	0	0	2	ew Dawn/F	Road
		Sivoo	638	120	Arawa Hos	186	50	100	22.11.22	1	0	0	0	ew Dawn/F	Road
		Kabaiaka	279	95	Arawa Hos	125	42	73	22.11.22	1	0	0	3	ew Dawn/F	Road
		Moransina	367	76	Arawa Hos	157	45	81	22.11.22	1	0	0	4	ew Dawn/F	Road
		Muronai	227	123	Arawa Hos	119	27	60	22.11.22	1	0	0	10	ew Dawn/F	Road
		Ibera	191	105	Arawa Hos	249	50	128	22.11.22	1	0	0	7	ew Dawn/F	Road
		Kontaroro	213	89	Arawa Hos	81	29	43	22.11.22	1	0	0	15	ew Dawn/F	Road
		Auruii	259	498	Arawa Hos	503	120	255	22.11.22	1	0	0	0	ew Dawn/F	Road
		Wida	303	705	Arawa Hos	762	200	372	22.11.22	1	0	0	0	ew Dawn/F	Road
		Kurai	467	1,531	Arawa Hos	1,263	299	622	19.11.22	1	1	1	55	ew Dawn/F	Road
		Roreinang	284	873	Arawa Hos	580	171	286	22.11.22	1	0	0	5	ew Dawn/F	Road
		Paraiano	142	1,152	Arawa Hos	899	220	453	22.11.22	1				New Dawn/F	Road
		Rumba	1,147	905	Arawa Hos	726	175	369	22.11.22	1	0	0	0	ew Dawn/F	Road
		Sirampana	413	132	Arawa Hos	409	100	208	23.11.22	1	0	0	0	ew Dawn/F	Road
		Bakatong	1,032	335	Arawa Hos	284	50	143	22.11.22	1	0	0	47	ew Dawn/F	Road
		Kokade	298	195	Arawa Hos	421	99	221	22.11.22	1	0	0	0	ew Dawn/F	Road
		Siromba	379	169	Arawa Hos	310	77	159	22.11.22	1	0	0	0	ew Dawn/F	Road
		Darutue	540	136	Arawa Hos	250	48	125	26.11.22	1	0	0	36	ew Dawn/F	Road
		Tuinang	108	269	Arawa Hos	193	42	97	26.11.22	1	0	0	25	ew Dawn/F	Road
		Dorvua	413	309	Arawa Hos	192	44	93	25.11.22	1	0	0	34	ew Dawn/F	Road
		Toverau	450	315	Arawa Hos	218	43	108	26.11.22	1	0	0	36	ew Dawn/F	Road
		Baruato	88	59	Arawa Hos	181	43	93	23.11.22	1	0	0	35	ew Dawn/F	Road
		Damaosi	122	0	Arawa Hos	42	12	21	23.11.22	1	0	0	8	ew Dawn/F	Road
		Moinang	359	0	Arawa Hos	158	30	85	22.11.22	1	0	0	16	ew Dawn/F	Road
		Sianava	0	0	Arawa Hos										Same name as Sianava in Kongara 01
		Kaminai	0	0	Arawa Hos										Non Existant
		Tomungkina	0	139	Arawa Hos										Same name as Kokade
		Marai	0	167	Arawa Hos										Same name as Siromba
		Mintarai	0	654	Arawa Hos										Same name as Sirampana
		IORO 1	1,812	4,822		4,187	1,028	2,127		13	1	0	25		
	9	Detosi	325	327	Panguna HC	211	43	106	18.11.22	1	0	0	0		Road
		Panka'a	865	387	Panguna HC	315	79	168	19.11.22	1	0	0	0		Road
		Kouvinau	259	205	Panguna HC	172	34	87	19.11.22	1	0	0	1		Road
		Kusioko	362	196	Panguna HC	301	57	145	20.11.22	1	0	0	2		Road
		Mumurai	0	552	Panguna HC	431	142	222	19.11.22	1	0	0	1		Road/Trek
		Narinai	0	568	Panguna HC	374	137	201	17.11.22	1	0	0	8		Road
		Orami	0	324	Panguna HC	386	77	195	19.11.22	1	0	0	2		Road/Trek
		Widoi	0	304	Panguna HC	338	82	165	19.11.22	1	1	0	0		Road/Trek
		Tekana	0	617	Panguna HC	522	113	264	20.11.22	1	0	0	0		Road/Trek
		Kavona	0	234	Panguna HC	278	58	141	20.11.22	1	0	0	0		Road/Trek
		Iarako	0	361	Panguna HC	390	96	197	19.11.22	1	0	0	11		Road/Trek
		Irang	0	329	Panguna HC	313	71	157	19.11.22	1	0	0	0		Road/Trek
		Koviakun	0	138	Panguna HC	156	39	79	17.11.22	1	0	0	0		Road
		Daru	0	282											Included Under Arawa Ho Under Kongara 1
		IORO 2	3,376	4,921		5,446	1,044	2,795		16	7	0	18		

LLG	WARD	VILLAGE	Estimated 2022 Population Based On 2000 Census	Estimated 2022 Population Based On 2019 Survey	Health Centre	Population Surveyed	House Holds Surveyed	Nets Issued	Date Of Distribution	Villages	Digicel	Emobile	Houses With Radios	Radio Networks	Comments
	10	Piaboro	59	128	Panguna HC	76	15	44	16.11.22	1	0	0	0		Trek
		Kokore	450	493	Panguna HC	499	95	245	16.11.22	1	0	0	1		Trek
		Baopon	746	191	Panguna HC	291	50	151	16.11.22	1	0	0	3		Trek
		Guava	526	352	Panguna HC	350	66	180	15.11.22	1	1	0	0		Road
		Moroni	306	222	Panguna HC	237	44	127	14.11.22	1	0	0	0		Trek
		Panguna	0	719	Panguna HC	946	166	476	14.11.22	1	1	0	0		Trek
		Dapera (Panguna HC)	352	338	Panguna HC	430	108	229	14.11.22	1	1	0	0		Road
		Pirurari	259	126	Panguna HC	159	29	78	15.11.22	1	1	0	0		Road
		Pisinau	203	90	Panguna HC	187	43	101	16.11.22	1	0	0	3		Trek
		Damara	477	0	Panguna HC	176	37	93	16.11.22	1	0	0	0		Trek
		Mosinau	0	245	Panguna HC	262	36	133	20.11.22	1	1	0	1		Trek
		Moroni	0	0	Panguna HC										Non Existant
		Kavaronau	0	245	Panguna HC	190	36	95	16.11.22	1	0	0	0		Road
		Jaba	0	449	Panguna HC	267	54	138	16.11.22	1	1	0	0		Road
		Darenai	0	0	Panguna HC										Book cnceld. Included Under Tenkona Wd3
		Barako	0	195	Panguna HC	161	33	87	16.11.22	1	0	0	0		Trek
		Onove	0	500	Panguna HC	425	85	224	15.11.22	1	1	0	0		Road
		Poaru	0	628	Panguna HC	790	147	394	15.11.22	1	0	0	10		Road
		PINEI - NARI	1,467	3,203		2,880	615	1,466		6	6	0	108		
	6	Pakia	675	439	Panguna HC	408	90	215	15.11.22	1	1	0	0		Road
		Parakake	310	301	Panguna HC	251	50	124	15.11.22	1	1	0	8		Road/Trek
		Siredonsi	332	567	Panguna HC	547	100	272	16.11.22	1	1	0	3		Road/Trek
		Mainku	149	280	Panguna HC	122	29	66	16.11.22	1	1	0	1		Road/Trek
		Kopei	0	985	Panguna HC	934	209	474	17.11.22	1	1	0	30		Trek
		Matana	0	650	Panguna HC	618	137	315	18.11.22	1	1	0	66		Trek
		ARAWA	5,420	6,945		6,034	1,265	3,104		17	17	17	849		
	14	Section 19	90	362	Arawa Hos	198	31	96	19.11.22	1	1	1	31	ew Dawn/F	Road
		Section 18	474	587	Arawa Hos	268	49	135	20.11.22	1	1	1	49	ew Dawn/F	Road
		Section 17	648	648	Arawa Hos	486	76	257	20.11.22	1	1	1	71	ew Dawn/F	Road
		Section 15	680	450	Arawa Hos	368	299	187	22.11.22	1	1	1	67	ew Dawn/F	Road
		Section 14	550	871	Arawa Hos	763	160	408	22.11.22	1	1	1	158	ew Dawn/F	Road
		Section 9		NEW	Arawa Hos	321	48	162	22.11.22	1	1	1	45	ew Dawn/F	Road
		Setion 22		NEW	Arawa Hos	253	43	130	25.11.22	1	1	1	0	ew Dawn/F	Road
		Section 10	682	365	Arawa Hos	415	65	211	19.11.22	1	1	1	60	ew Dawn/F	Road
		Section 12		NEW	Arawa Hos	33	5	18	22.11.22	1	1	1	5	ew Dawn/F	Road
		Section 11	714	483	Arawa Hos	327	54	176	19.11.22	1	1	1	47	ew Dawn/F	Road
		Section 6	687	616	Arawa Hos	386	103	203	18.11.22	1	1	1	82	ew Dawn/F	Road
		Section 5	354	324	Arawa Hos	378	55	183	18.11.22	1	1	1	43	ew Dawn/F	Road
		Section 13	440	385	Arawa Hos	407	52	208	19.11.22	1	1	1	48	ew Dawn/F	Road
		Section 16	100	493	Arawa Hos	417	62	217	04.12.22	1	1	1	0	ew Dawn/F	Road
		Section 44 & 35	0	668	Arawa Hos	411	60	213	19.11.22	1	1	1	50	ew Dawn/F	Road
		Tokunari	0	172	Arawa Hos	285	50	148	20.11.22	1	1	1	50	ew Dawn/F	Road
		Camp 9 & Section 9	0	521	Arawa Hos	318	53	152	22.11.22	1	1	1	43	ew Dawn/F	Road

ANNEX THREE

NORTH SOLOMONS PROVINCE SOUTH BOUGANVILLE POPULATION 2022 LLIN DISTRIBUTION SUMMARY SHEET

LLG	WARD	VILLAGE	Estimated 2022 Population Based On 2000 Census	Estimated 2022 Population Based On 2019 Survey	Health Centre	Population Surveyed	House Holds Surveyed	Nets Issued	Date Of Distribution	Villages	Digicel	Bmobile	Houses With Radios	Radio Networks	Comments
SOUTH BOUGANVILLE			112,553	112,553		106,428	23,934	55,396		354	257	1	5,551	83	
BUIN			49,174	50,175		48,114	10,185	25,250		116	65	1	4,629	83	
115	BAUBAKE		11,151	12,520		11,714	2,845	6,360		19	18	1	1,300		Gov
	19	Laguai	1,927	2,116	Buin HC	2,231	491	1,180	22.03.23	1	1	0	236		Road
		Nakorei	513	610	Buin HC	586	152	314	24.03.23	1	1	0	51		Road
		Kanauro	1,109	1,301	Buin HC	1,182	372	677	18-20.03.23	1	1	0	161		Road
		Kararu	154	256	Buin HC	253	82	158	20.03.23	1	1	0	69		Road
		Kuguuogu	377	355	Buin HC	120	28	58	22.03.23	1	1	0	28		Road
		Malabita	1,211	1,412	Buin HC	1,357	312	719	19-21.03.23	1	1	0	171		Road
		Lamuai	255	181	Buin HC	215	66	126	20-22.03.23	1	1	0	48		Road
		Nkumu	175	220	Buin HC	223	45	113	20-21.03.23	1	1	0	33		Road
		Luaguo	608	727	Buin HC	636	180	365	21.03.23	1	1	0	0		Road
		Okoiragu	414	410	Buin HC	336	86	176	21.03.23	1	1	0	63		Road
		Kukumai	516	367	Buin HC	361	94	191	21.03.23	1	1	0	81		Road
		Mamarominno	868	945	Buin HC	885	165	456	17.03.23	1	1	0	47		Road
		Mitau	461	395	Buin HC	452	100	230	17-18.03.23	1	1	0	5		Road
		Morou	1,050	563	Buin HC	522	106	290	20.03.23	1	1	0	92		Road
		Maramuku	163	499	Buin HC	440	98	244	18.03.23	1	1	0	86		Road
		Nakaro	368	423	Buin HC	470	90	252	21.03.23	1	1	0	79		Road
		Buin Town	901	1,414	Buin HC	1,220	317	678	24.03.23	1	1	1	50		Road
		Rantan Island		159	Tabago HC	146	47	90	19.03.23	1	0	0	0	New Dawn	Road
		Turiboiru Cath. Mission	82	167	Turiboiru HC	79	14	43	21.03.23	1	1	0	0		Catholic
	LUGAKEI		6,653	6,597		6,839	1,455	3,601		14	13	0	53		
	14	Ibirai	654	733	Turiboiru HC	684	190	384	21.03.23	1	1	0	0		Road
		Kugumaru	700	791	Turiboiru HC	869	191	467	16.03.23	1	1	0	0		Road
		Laitaro	940	728	Turiboiru HC	700	153	363	20.03.23	1	1	0	9		Road
		Siuru	390	299	Turiboiru HC	374	80	199	21.03.23	1	1	0	11		Road
		Iula 1	526	460	Turiboiru HC	614	103	318	20.03.23	1	1	0	2		Road
		Iula 2	303	220	Turiboiru HC	225	40	118	21.03.23	1	1	0	1		Road
		Iula 3	297	357	Turiboiru HC	252	50	134	17.03.23	1	0	0	0		Road
		Moreu	275	294	Turiboiru HC	254	53	136	20.03.23	1	1	0	0		Road
		Kasikana	175	190	Turiboiru HC	193	38	106	20.03.23	1	1	0	2		Road
		Masikuru	216	128	Turiboiru HC	221	49	116	15.03.23	1	1	0	3		Road
		Koniguru	483	469	Turiboiru HC	468	88	240	17.03.23	1	1	0	0		Road
		Kugulasi	255	335	Turiboiru HC	239	41	120	17.03.23	1	1	0	0		Road
		Pariro	1,159	1,260	Turiboiru HC	1,404	310	712	15.03.23	1	1	0	22		Road
		Kugugai	281	334	Turiboiru HC	342	69	188	17.03.23	1	1	0	3		Road
	KONNOU		10,814	10,913		10,692	2,145	5,676		30	0	0	918		
	30	Bogisago	403	290	Tabago HC	296	58	168	21.03.23	1	0	0	36	New Dawn	Road
		Kukapai		434	Tabago HC	301	62	144	21.03.23	1	0	0	32	New Dawn	Road
		Metekilu	171	86	Tabago HC	104	23	54	21.03.23	1	0	0	10	New Dawn	Road
		Paulouku	334	182	Tabago HC	119	25	66	21.03.23	1	0	0	9	New Dawn	Road
		Lukaoko	580	371	Tabago HC	356	77	202	21.03.23	1	0	0	63	New Dawn	Road
		Kaitu	288	287	Tabago HC	257	46	136	20.03.23	1	0	0	0	New Dawn	Road
		Turutai	281	441	Tabago HC	362	70	189	21.03.23	1	0	0	1	New Dawn	Road
		Luirau	277	478	Tabago HC	403	82	210	20.03.23	1	0	0	27	New Dawn	Road
		Piriraro	451	414	Tabago HC	352	57	180	21.03.23	1	0	0	42	New Dawn	Road
		Tabago STN		76	Tabago HC	397	46	183	19.03.23	1	0	0	8	New Dawn	Road
		Tabago	455	420	Tabago HC	279	56	143	21.03.23	1	0	0	1	New Dawn	Road
		Koogu	585	610	Tabago HC	702	163	356	18.03.23	1	0	0	125	New Dawn	Road
		Iamaru	381	390	Tabago HC	338	84	175	15.03.23	1	0	0	19	New Dawn	Road
		Tantareki	739	809	Tabago HC	906	191	478	18.03.23	1	0	0	126	New Dawn	Road
		Lakowe	572	615	Tabago HC	469	120	270	15.03.23	1	0	0	21	New Dawn	Road
		Maika	440	248	Tabago HC	434	100	227	15.03.23	1	0	0	25	New Dawn	Road
		Muguai	288	338	Tabago HC	395	100	217	19.03.23	1	0	0	34	New Dawn	Road
		Uganno	236	210	Tabago HC	238	59	130	21.03.23	1	0	0	40	New Dawn	Road
		Taguruai	256	314	Tabago HC	265	59	142	15.03.23	1	0	0	0	New Dawn	Road
		Muisuru	373	478	Tabago HC	665	138	349	19.03.23	1	0	0	21	New Dawn	Road
		Oraba	262	198	Tabago HC	145	39	90	19.03.23	1	0	0	26	New Dawn	Boat
		Ehurei/Tololae		328	Tabago HC	135	41	93	19.03.23	1	0	0	11	New Dawn	Boat
		Sari	188	226	Tabago HC	159	49	103	19.03.23	1	0	0	33	New Dawn	Boat
		Kigibasiogu	137	489	Tabago HC	397	34	206	21.03.23	1	0	0	29	New Dawn	Road
		Kamouro	1,326	817	Tabago HC	1,224	151	635	21.03.23	1	0	0	54	New Dawn	Road
		Ororoi	368	202	Tabago HC	173	43	91	19.03.23	1	0	0	15	New Dawn	Road
		Mogoroi	639	497	Tabago HC	218	50	124	19.03.23	1	0	0	43	New Dawn	Road
		Kogukilu	242	266	Tabago HC	190	42	94	19.03.23	1	0	0	40	New Dawn	Road
		Orumoi	225	79	Tabago HC	156	34	81	15.03.23	1	0	0	22	New Dawn	Trek
		Parero	316	318	Tabago HC	257	46	140	21.03.23	1	0	0	5	New Dawn	Trek
	MAKIS		10,118	10,173		9,221	1,928	4,685		24	20	0	1,491		
	24	Aku	684	543	Piano HC	614	120	330	17.02.23	1	0	0	56	New Dawn	Road
		Leloutu	394	498	Piano HC	455	123	241	17.02.23	1	1	0	67	New Dawn	Road
		Kokopo	966	1,052	Piano HC	958	190	460	17.02.23	1	0	0	169	New Dawn	Road
		Tokuaka	111	267	Piano HC	220	49	117	17.02.23	1	1	0	32	New Dawn	Road/Trek
		Nabaku	760	477	Piano HC	420	63	214	17.02.23	1	0	0	49	New Dawn	Road
		Piano	39	573	Piano HC	457	87	240	17.02.23	1	0	0	81	New Dawn	Road
		Mouake	386	416	Piano HC	414	93	214	17.02.23	1	1	0	84	New Dawn	Road

LLG	WARD	VILLAGE	Estimated 2022 Population Based On 2000 Census	Estimated 2022 Population Based On 2019 Survey	Health Centre	Population Surveyed	House Holds Surveyed	Nets Issued	Date Of Distribution	Villages	Digicel	Bmobile	Houses With Radios	Radio Networks	Comments
		Tualagai	394	506	Piano HC	454	84	227	20.02.23	1	1	0	78	New Dawn	Road
		Simbo	388	473	Piano HC	452	78	227	20.02.23	1	1	0	77	New Dawn	Road
		Morula	433	394	Piano HC	400	87	200	20.02.23	1	1	0	44	New Dawn	Road
		Tugiu	602	624	Piano HC	512	100	248	20.02.23	1	1	0	76	New Dawn	Road
		Turigau	427	473	Piano HC	426	93	210	20.02.23	1	1	0	33	New Dawn	Road
		Ibiro No. 1	210	207	Piano HC	255	49	124	20.02.23	1	1	0	38	New Dawn	Road
		Lukaruro	635	525	Piano HC	498	100	244	20.02.23	1	1	0	92	New Dawn	Road
		Kogisagano	273	298	Piano HC	213	70	132	20.02.23	1	1	0	46	New Dawn	Road
		Kanaia	234	187	Piano HC	228	45	104	20.02.23	1	1	0	28	New Dawn	Road
		Lobigou	195	139	Piano HC	98	31	66	20.02.23	1	1	0	25	New Dawn	Road
		Tobaru No. 2	377	320	Piano HC	348	71	174	20.02.23	1	1	0	65	New Dawn	Road
		Tobaru No. 1	429	270	Piano HC	280	56	139	20.02.23	1	1	0	44	New Dawn	Road
		Mainika	425	274	Piano HC	272	54	138	20.02.23	1	1	0	50	New Dawn	Road
		Akamoro	312	264	Piano HC	243	50	121	20.02.23	1	1	0	37	New Dawn	Road
		Tugiogu No. 1	405	903	Piano HC	467	126	248	20.02.23	1	1	0	124	New Dawn	Road
		Tugiogu No. 2	747	284	Piano HC	362	73	179	20.02.23	1	1	0	72	New Dawn	Road
		Ibiro No. 2	290	210	Piano HC	175	36	88	20.02.23	1	1	0	24	New Dawn	Road
		LENOKE	4,529	4,529		4,796	950	2,442		15	14	0	585		
	15	Okomo	412	202	Lenoke HC	279	29	148	22.02.23	1	1	0	0	New Dawn	Road
		Burupurruno	307	228	Lenoke HC	188	39	102	23.02.23	1	1	0	30	New Dawn	Road
		Porupi	320	258	Lenoke HC	253	50	134	23.02.23	1	1	0	50	New Dawn	Road
		Numakei	435	508	Lenoke HC	484	100	239	23.02.23	1	1	0	0	New Dawn	Road
		Omitaro	182	167	Lenoke HC	233	46	114	24.02.23	1	1	0	1	New Dawn	Road
		Tokaino	17	61	Lenoke HC	63	14	36	23.02.23	1	1	0	14	New Dawn	Road
		Kumilougu	186	212	Lenoke HC	180	42	90	23.02.23	1	1	0	37	New Dawn	Road
		Oremutsi	427	429	Lenoke HC	457	93	235	22.02.23	1	1	0	85	New Dawn	Road/Trek
		Masiogu	128	237	Lenoke HC	276	47	146	23.02.23	1	1	0	43	New Dawn	Road/Trek
		Ubamioiutu	485	438	Lenoke HC	416	81	207	23.02.23	1	1	0	79	New Dawn	Road/Trek
		Kikimogu	680	593	Lenoke HC	773	150	381	22.02.23	1	1	0	36	New Dawn	Road
		Piarino	301	287	Lenoke HC	322	74	170	22.02.23	1	1	0	57	New Dawn	Road
		Parerono	758	701	Lenoke HC	657	140	333	23.02.23	1	1	0	115	New Dawn	Road
		Makaroi	260	208	Lenoke HC	215	45	107	23.02.23	1	1	0	38	New Dawn	Road
		Lenoke Health Cntr	54	0	Lenoke HC					1					Included Under Tokaino
		WISAI	5,488	5,443		4,852	862	2,486		14	0	0	282		
	13	Potulai	284	236	Oria HC	221	44	111	24.03.23	1	0	0	0	New Dawn	Road/Trek
		Ibisaro	336	510	Oria HC	351	75	172	24.03.23	1	0	0	10	New Dawn	Road/Trek
		Oremai	639	612	Oria HC	565	125	294	26.03.23	1	0	0	35	New Dawn	Road
		Sulekunu	687	347	Oria HC	338	22	170	26.03.23	1	0	0	0	New Dawn	Road/Trek
		Kaukausinu	175	289	Oria HC	279	63	143	26.03.23	1	0	0	5	New Dawn	Trek
		Siurai	236	211	Oria HC	250	50	126	26.03.23	1	0	0	0	New Dawn	Road/Trek
		Kekemono	450	331	Oria HC	201	42	109	26.03.23	1	0	0	0	New Dawn	Road/Trek
		Oria	914	1,011	Oria HC	900	180	463	24.03.23	1	0	0	62	New Dawn	Road
		Ugubakogu	411	588	Oria HC	661	46	330	24.03.23	1	0	0	22	New Dawn	Road
		Paghiu	806	798	Oria HC	570	132	312	24.03.23	1	0	0	93	New Dawn	Road
		Kulula	230	119	Oria HC	51	7	23	24.03.23	1	0	0	4	New Dawn	Road
		Block 1	117	215	Oria HC	138	24	69	26.03.23	1	0	0	22	New Dawn	Road
		Block 2	203	0	Oria HC	154	17	76	24.03.23	1	0	0	17	New Dawn	Road
		Akanai		176	Oria HC	173	35	88	24.03.23	1	0	0	12	New Dawn	Road
		SIWAI	25,497	25,183		23,645	5,508	12,314		96	76	0	148	0	
	94	MUKAKURU	2,735	3,067		3,020	745	1,596		12	5	0	30		
	11	Siuru	176	344	Katuku HC	342	90	185	17.02.23	1	0	0	0		Road/Trek
		Topopisau 1	253	241	Katuku HC	230	39	115	18.02.23	1	0	0	1		Road/Trek
		Topopisau 2	121	142	Katuku HC	83	26	66	18.02.23	1	0	0	2		Road/Trek
		Piroruino	123	177	Katuku HC	181	41	92	18.02.23	1	0	0	16		Road/Trek
		Tarapa	351	298	Katuku HC	332	83	173	17.02.23	1	0	0	2		Road/Trek
		Hinno	269	326	Katuku HC	320	86	166	17.02.23	1	1	0	0		Road
		Moronei	615	509	Katuku HC	476	107	249	17.02.23	1	1	0	8		Road
		Kuhinnu	227	171	Katuku HC	158	47	83	19.02.23	1	1	0	1		Road
		Tsiperu	242	249	Katuku HC	238	68	127	18.02.23	1	0	0	0		Road/Trek
		Matarasi	225	407	Katuku HC	433	100	218	17.02.23	1	0	0	0		Road
		Laku	134	202	Katuku HC	201	50	105	17.02.23	1	1	0	0		Road
		Katuku Health Sub Centre		NEW	Katuku HC	26	8	17	24.02.23	1	1	0	0		Road
		RATAIKU	1,915	1,688		1,428	338	778		8	5	0	1		
	8	Hanong	186	126	Katuku HC	142	31	79	17.02.23	1	0	0	1		Road
		Maisua	255	147	Katuku HC	121	27	67	18.02.23	1	1	0	0		Road
		Noronai	102	118	Katuku HC	82	19	42	20.02.23	1	1	0	0		Road
		Morokaimoro	398	374	Katuku HC	265	58	145	18.02.23	1	1	0	0		Trekking
		Sikumone		138	Katuku HC	113	28	56	19.02.23	1	0	0	0		Trekking
		Mokorino 2	334	161	Katuku HC	136	35	80	17.02.23	1	0	0	0		Trekking
		Mokorino 1	249	211	Katuku HC	174	42	99	17.02.23	1	1	0	0		Road
		Turungung	392	414	Katuku HC	395	98	210	17.02.23	1	1	0	0		Road
		KONGA	2,733	2,194		2,128	464	1,108		9	6	0	3		
	9	Piwakei	565	394	Konga HC	372	77	184	15.02.23	1	1	0	1		Road
		Kapana	422	255	Konga HC	254	58	137	15.02.23	1	0	0	0		Road
		Kinirui	431	280	Konga HC	199	47	115	15.02.23	1	1	0	0		Road
		Munnu	466	639	Konga HC	578	131	294	15.02.23	1	1	0	1		Road
		Sikurai	223	202	Konga HC	133	37	72	15.02.23	1	1	0	1		Road
		Rusiru	294	127	Konga HC	165	34	89	15.02.23	1	0	0	0		Road
		Jeeku	158	126	Konga HC	158	31	78	14.02.23	1	1	0	0		Road
		Siikumone	141	0	Konga HC					1		0			Included Under Katuku HSC
		Konga Chns	33	171	Konga HC	269	49	139	15.02.23	1	1	0	0		Road

LLG	WARD	VILLAGE	Estimated 2022 Population Based On 2000 Census	Estimated 2022 Population Based On 2019 Survey	Health Centre	Population Surveyed	House Holds Surveyed	Nets Issued	Date Of Distribution	Villages	Digicel	Bmobile	Houses With Radios	Radio Networks	Comments
		RUHWAKU	2,638	2,733		2,788	661	1,427		7	7	0	22		
	7	Kuting	294	142	Konga HC	164	35	92	14.02.23	1	1	0	2		Road
		Kohkui	425	390	Konga HC	458	124	229	14.02.23	1	1	0	1		Road
		Kunnu	414	332	Konga HC	301	72	154	14.02.23	1	1	0	0		Road
		Musiminnoi	381	389	Konga HC	245	59	130	14.02.23	1	1	0	0		Road
		Mosiraka	63	92	Konga HC	159	38	84	14.02.23	1	1	0	1		Road
		Kimuku	210	350	Konga HC	458	106	231	14.02.23	1	1	0	0		Road
		Dusei	851	1,036	Konga HC	1,003	227	507	14.02.23	1	1	0	18		Road
		KORIKUNU	3,868	3,642		3,442	816	1,782		15	15	0	56		
	15	Siroi	572	410	Monoitu HC	332	70	174	15.02.23	1	1	0	0		Road
		Raasu	150	181	Monoitu HC	182	44	91	12.02.23	1	1	0	0		Road
		Siraruho	169	123	Monoitu HC	178	45	94	15.02.23	1	1	0	0		Road
		Kotu	111	178	Monoitu HC	167	44	89	11.02.23	1	1	0	5		Road/Trek
		Kahuwanka	132	80	Monoitu HC	95	23	47	13.02.23	1	1	0	0		Road
		Toitoi	340	257	Monoitu HC	195	50	102	16.02.23	1	1	0	0		Road
		Lue/Hire	468	430	Monoitu HC	389	96	209	16.02.23	1	1	0	0		Road
		Koropo	227	166	Monoitu HC	139	34	77	16.02.23	1	1	0	1		Road
		Ununai	184	190	Monoitu HC	157	44	77	16.02.23	1	1	0	0		Road
		Kaparo	689	543	Monoitu HC	465	114	238	15.02.23	1	1	0	0		Road
		Arai	48	153	Monoitu HC	179	36	86	20.02.23	1	1	0	0		Road
		Amioi	412	342	Monoitu HC	373	92	198	17.02.23	1	1	0	49		Road
		Harikaku	78	149	Monoitu HC	177	36	89	13.02.23	1	1	0	0		Road
		Manahe	240	340	Monoitu HC	338	70	169	11.02.23	1	1	0	0		Road
		Monoitu Cath. Mission	46	98	Monoitu HC	76	18	42	22.02.23	1	1	0	1		Road
		HARI	2,815	2,294		2,057	488	1,073		9	7	0	11		
	9	Hari	437	355	Monoitu HC	334	69	171	13.02.23	1	1	0	10		Road
		Moipinai	234	238	Monoitu HC	213	50	108	13.02.23	1	1	0	0		Road
		Lupunmo	128	169	Monoitu HC	126	28	68	15.02.23	1	1	0	0		Road
		Siuruhinno	427	507	Monoitu HC	673	156	351	13.02.23	1	1	0	1		Road
		Lakempa	476	111	Monoitu HC					1					Included Under Siuruhinno
		Hokuhko	268	298	Monoitu HC	278	65	140	12.02.23	1	1	0	0		Road
		Pihhanawa	485	191	Monoitu HC	204	50	111	11.02.23	1	1	0	0		Road
		Mamogota	269	247	Monoitu HC	229	70	124	11.02.23	1	1	0	0		Road
		Kupusi	91	178	Monoitu HC					1					Included Under Siuruhinno
		TOKUNUTU	1,148	1,182		1,199	253	616		7	3	0	7		
	6	Tokunutu	124	109	Monoitu HC	125	29	68	10.02.23	1	0	0	0		Road
		Motuna'a	238	251	Monoitu HC	226	50	114	10.02.23	1	0	0	7		Road
		Kimmau	184	166	Monoitu HC	176	35	95	10.02.23	1	0	0	0		Road
		Hiruhiru	162	225	Monoitu HC	250	45	122	10.02.23	1	0	0	0		Road
		Pinanai	407	257	Monoitu HC	218	49	110	10.02.23	1	1	0	0		Road
		Haisi Com. School	33	175	Monoitu HC	76	21	43	10.02.23	1	1	0	0		Road
		Posumo		NEW	Monoitu HC	128	24	64	10.02.23	1	1	0	0		Road
		HUYONO	2,738	3,151		2,786	628	1,409		8	8	0	0		
	8	Mosiri	516	157	Boku HC	156	37	85	30.11.22	1	1	0	0		Road
		Horino	414	632	Boku HC	750	169	375	03.12.22	1	1	0	0		Road
		Kumuki	301	605	Boku HC	451	99	223	30.11.22	1	1	0	0		Road
		Sininai	175	276	Boku HC	167	21	87	03.12.22	1	1	0	0		Road
		Mihero	520	356	Boku HC	340	86	179	30.11.22	1	1	0	0		Road
		Miwoku	247	216	Boku HC	211	50	102	30.11.22	1	1	0	0		Road
		Irue	355	666	Boku HC	454	113	229	30.11.22	1	1	0	0		Road
		Domonino	210	245	Boku HC	257	53	129	30.11.22	1	1	0	0		Road
		MOTUNA	4,906	5,233		4,797	1,115	2,525		21	20	0	18		
	21	Toira	63	231	Tonu HC	185	42	97	18.02.23	1	1	0	0		Road
		Tonnui	394	414	Tonu HC	336	88	206	18.02.23	1	1	0	1		Road
		Hukohah	628	496	Tonu HC	474	114	241	18.02.23	1	1	0	0		Road
		Aitara 1	145	229	Tonu HC	228	50	116	11.02.23	1	1	0	1		Covered under Monoitu HC
		Runnoi	152	245	Tonu HC	175	39	89	16.02.23	1	1	0	0		Road
		Tohu	340	441	Tonu HC	382	85	196	16.02.23	1	1	0	0		Road
		Uso	255	331	Tonu HC	323	78	168	16.02.23	1	1	0	0		Road
		Oso	245	276	Tonu HC	261	59	139	16.02.23	1	1	0	0		Road
		Purikori	162	118	Tonu HC	178	41	89	20.02.23	1	1	0	0		Road
		Mainoita	455	205	Tonu HC	212	49	109	19.02.23	1	1	0	1		Road
		Kakotokori	182	151	Tonu HC	143	42	71	22.02.23	1	1	0	0		Road
		Tonu	249	368	Tonu HC	268	58	140	19.02.23	1	1	0	0		Road
		Nukui	201	324	Tonu HC	204	50	112	21.02.23	1	1	0	0		Road
		Posou	89	93	Tonu HC	91	19	48	20.02.23	1	1	0	14		Road
		Rabaulu	502	424	Tonu HC	407	89	211	20.02.23	1	1	0	1		Road
		Matukori	409	301	Tonu HC	423	89	221	20.02.23	1	1	0	0		Road
		Hanong	84	41	Tonu HC					1		0			Included Under Matukori
		Hijae	121	158	Tonu HC	134	31	71	20.02.23	1	1	0	0		Road
		Narahe	54	137	Tonu HC	183	45	97	18.02.23	1	1	0	0		Road
		Tonu Health Centr.	126	250	Tonu HC	27	7	13	18.02.23	1	1	0	0		Road
		Tonu High Schl.	52	0	Tonu HC	163	40	91	18.02.23	1	1	0	0		Road
		BANA	27,648	27,896		25,293	5,774	12,960		93	90	0	64	0	
	93	BAITSI	4,723	5,954		5,578	1,275	2,805		14	13	0	64		Gov
	14	Sinsilua	221	555	Boku HC2	380	83	187	03.12.22	1	1	0	0		Road
		Mavele	425	562	Boku HC2	411	81	202	05.12.22	1	1	0	0		Road
		Kiki	119	70	Boku HC2	168	42	92	05.12.22	1	1	0	0		Road
		Mosigetata	65	240	Boku HC2	226	50	109	06.12.22	1	1	0	0		Road

LLG	WARD	VILLAGE	Estimated 2022 Population Based On 2000 Census	Estimated 2022 Population Based On 2019 Survey	Health Centre	Population Surveyed	House Holds Surveyed	Nets Issued	Date Of Distribution	Villages	Digicel	Bmobile	Houses With Radios	Radio Networks	Comments
		Mewa	268	264	Boku HC2	304	63	162	05.12.22	1	1	0	0		Road
		Wamenabela	542	456	Boku HC2	374	94	196	06.12.22	1	1	0	0		Road
		Lavoro	340	556	Boku HC2	394	100	202	05.12.22	1	1	0	0		Road
		Birosi	856	1,054	Boku HC2	1,232	280	578	05.12.22	1	1	0	64		Road
		Pikei	713	784	Boku HC2	687	221	361	04.12.22	1	1	0	0		Road
		Boku Village	438	178	Boku HC2	313	100	163	05.12.11	1	1	0	0		Road
		Sirokoro	128	221	Boku HC2	217	38	108	03.12.22	1	1	0	0		Road
		Boku Community School	43	0	Boku HC2					1					Included Under Sirokoro
		Boku Health Centre	46	226	Boku HC2	115	23	57	03.12.12	1	1	0	0		Road
		Solom Settlement	516	789	Boku HC2	757	100	388	05.12.22	1	1	0	0		Road
		LAMANE EAST	4,340	4,800		3,469	802	1,780		17	17	0	0		Catholic
	18	Sipii	418	241	Sovele HC	270	65	133	06.12.22	1	1	0	0		Road/Trek
		Osiage	189	395	Sovele HC	239	48	118	02.12.22	1	1	0	0		Road/Trek
		Bokoram li	115	212	Sovele HC	170	37	93	02.12.22	1	1	0	0		Road/Trek
		Agawa	372	241	Sovele HC	46	12	25	02.12.22	1	1	0	0		Road/Trek
		Osilei	221	128	Sovele HC	145	38	75	03.12.22	1	1	0	0		Road/Trek
		Mingeta	61	68	Sovele HC	51	13	27	02.12.22	1	1	0	0		Road/Trek
		Aumali	132	81	Sovele HC	117	31	68	02.12.22	1	1	0	0		Road/Trek
		Nukui	236	173	Sovele HC	147	31	77	03.12.22	1	1	0	0		Road
		Peile	212	208	Sovele HC	111	30	62	29.11.22	1	1	0	0		Road
		Takemali	671	677	Sovele HC	437	100	230	29.11.22	1	1	0	0		Road
		Kung- Aletu	269	116	Sovele HC	214	50	115	29.11.22	1	1	0	0		Road
		Simaa	78	77	Sovele HC										Non Existant
		Amarus	273	238	Moratona HC	207	50	102	28.11.22	1	1	0	0		Road
		Mokokoreu	217	229	Moratona HC	216	50	106	28.11.22	1	1	0	0		Road
		Wiwawaro	440	757	Sovele HC	328	75	174	30.11.22	1	1	0	0		Road/Trek
		Pagawabo	390	614	Sovele HC	467	100	223	05.12.22	1	1	0	0		Road
		Pope Community School	15	206	Sovele HC	101	22	52	02.12.22	1	1	0	0		Road
		Taginare Community School	30	139	Moratona HC	203	50	100	28.11.22	1	1	0	0		Road
		LAMANE SOUTH	3,407	3,107		2,994	634	1,558		15	15	0	0		Catholic
	15	Ililu	195	161	Sinkodo HC	195	49	104	04.12.22	1	1	0	0		Road/Trek
		Lotare 2	316	256	Sinkodo HC	180	34	92	02.12.22	1	1	0	0		Road/Trek
		Sinkodo	528	162	Sinkodo HC	93	23	52	03.12.22	1	1	0	0		Road
		Moaino	240	157	Sinkodo HC	202	40	105	03.12.22	1	1	0	0		Road/Trek
		Wakupa	502	411	Siandoro AP	428	100	228	02.12.22	1	1	0	0		Road
		Matonaa	145	158	Siandoro AP	112	26	64	03.12.22	1	1	0	0		Road/Trek
		Iokaa	124	242	Sinkodo HC	239	33	115	03.12.22	1	1	0	0		Road/Trek
		Lopele	331	286	Sovele HC	291	55	148	02.12.22	1	1	0	0		Road
		Oukaru	136	122	Sinkodo HC	102	25	57	04.12.22	1	1	0	0		Road/Trek
		Taguli	429	254	Sinkodo HC	369	84	179	04.12.22	1	1	0	0		Road/Trek
		Tanna	171	186	Siandoro AP	141	27	73	03.12.22	1	1	0	0		Road/Trek
		Siandoro	253	210	Siandoro AP	247	50	126	02.12.22	1	1	0	0		Road
		Keriau		257	Siandoro AP	245	49	133	03.12.22	1	1	0	0		Road
		Keriau CommuniySchool		42	Sinkodo HC	24	9	14	03.12.22	1	1	0	0		Road
		Sigovele/Kamba	39	202	Sinkodo HC	126	30	68	04.12.22	1	1	0	0		Road
		TELEPI	5,715	4,431	Catholic	3,552	703	1,860		12	11	0	0		
	12	Panam	598	428	Sovele HC	281	58	143	30.11.22	1	1	0	0		Road
		Labonami	193	539	Sovele HC	239	48	123	30.11.22	1	1	0	0		Road
		Walaliu 1	136	291	Sovele HC	222	50	120	30.11.22	1	1	0	0		Road
		Walaliu 2	422	254	Sovele HC	245	50	133	30.11.22	1	1	0	0		Road/Trek
		Sianeki	403	403	Sovele HC	351	73	189	30.11.22	1	1	0	0		Road
		Waruwaru	845	749	Sovele HC	829	97	423	30.11.22	1	1	0	0		Road
		Beleleki	167	234	Sovele HC					1					Included Under Waruwaru
		Momoganali	453	545	Sovele HC	550	130	292	30.11.22	1	1	0	0		Road
		Kaleria	1,897	58	Sovele HC	211	50	114	30.11.22	1	1	0	0		Road
		Sirakatau	236	183	Sovele HC	209	48	105	30.11.22	1	1	0	0		Road
		Kowele	85	260	Sovele HC	86	23	49	30.11.22	1	1	0	0		Road
		Boleuko Mission	279	487	Sovele HC	329	76	169	30.11.22	1	1	0	0		Road
		TOMAU	5,789	5,403	Catholic	5,664	1,342	3,052		25	24	0	0		
	25	Lomari	498	311	Sovele HC	329	80	181	29.11.22	1	1	0	0		Road
		Waitabuna	281	274	Sovele HC	428	107	231	29.11.22	1	1	0	0		Road
		Kogola	130	205	Sovele HC	172	42	97	29.11.22	1	1	0	0		Road
		Lotare 1	260	349	Sovele HC	333	82	180	29.11.22	1	1	0	0		Road
		Tadorima	203	176	Sovele HC	198	48	111	28.11.22	1	1	0	0		Road
		Tuberuru	282	242	Sovele HC	171	37	94	05.12.22	1	1	0	0		Road
		Loro	767	317	Sovele HC	463	103	251	29.11.22	1	1	0	0		Road
		Wakare	329	138	Sovele HC	190	42	101	28.11.22	1	1	0	0		Road
		Larenai	314	177	Sovele HC	298	69	162	28.11.22	1	1	0	0		Road
		Masiwakore	279	277	Sovele HC	279	54	150	28.11.22	1	1	0	0		Road/Trek
		Lemisin	113	188	Sovele HC	172	44	91	28.11.22	1	1	0	0		Road
		Beretemba	225	254	Sovele HC	226	47	114	28.11.22	1	1	0	0		Road
		Osileni	383	296	Sovele HC	468	100	240	06.12.22	1	1	0	0		Road
		Pomalate	373	388	Sovele HC	249	50	132	06.12.22	1	1	0	0		Road
		Biroi	163	267	Sovele HC	283	85	154	05.12.22	1	1	0	0		Road
		Nairona	113	119	Sovele HC	151	34	77	05.12.22	1	1	0	0		Road
		Konawa	145	221	Sovele HC	166	48	90	05.12.22	1	1	0	0		Road
		Bakoram 1	346	320	Sovele HC	203	50	112	05.12.22	1	1	0	0		Road
		Wakoia	46	50	Sovele HC	40	14	20	05.12.22	1	1	0	0		Road
		Osilada	290	300	Sovele HC	328	84	174	05.12.22	1	1	0	0		Road
		Kaabe	121	178	Sovele HC	125	33	69	05.12.22	1	1	0	0		Road
		Bana High School	56	205	Sovele HC	209	42	116	29.11.22	1	1	0	0		Road
		Sovele G/Station	9	87	Sovele HC	84	20	47	28.11.22	1	1	0	0		Road

LLG	WARD	VILLAGE	Estimated 2022 Population Based On 2000 Census	Estimated 2022 Population Based On 2019 Survey	Health Centre	Population Surveyed	House Holds Surveyed	Nets Issued	Date Of Distribution	Villages	Digicel	Bmobile	Houses With Radios	Radio Networks	Comments
		Sovele Primary School	33	20	Sovele HC					1					Included Under Sovele HC
		Sovele Health Centre	30	46	Sovele HC	99	27	58	28.11.22	1	1	0	0		Road
		VELIPE	3,675	4,201	Catholic	4,036	1,018	1,905		10	10	0	0		
	9	Kuneka	541	167	Moratona HC	67	16	34	01.12.2022	1	1	0	0		Road
		Kokore		0	Moratona HC										Non Existant
		Konepoi	255	336	Moratona HC	416	91	205	25.11.2022	1	1				Road
		Lera	370	340	Moratona HC	460	122	228	25.11.2022	1	1	0	0		Road
		Koro	1,167	1,094	Moratona HC	988	276	456	27.11.2022	1	1	0	0		Road
		Sikorewa	587	774	Moratona HC	574	131	262	26.11.2022	1	1	0	0		Road
		Narinai	316	0	Moratona HC										Non Existant
		Labaram	412	451	Moratona HC	443	85	180	25.11.2022	1	1	0	0		Road
		Narinai-Orami Community Sch	28	0	Moratona HC										Non Existant
		Maire		399	Moratona HC	245	60	121	24.11.2022	1	1	0	0		Road
		Mewa		0	Moratona HC										Non Existant
		Katauli		260	Moratona HC	332	98	167	25.11.2022	1	1	0	0		Walk
		Polamato		157	Moratona HC	153	50	76	24.11.2022	1	1	0	0		Road
		Kobaru 1 & 2		222	Moratona HC	358	89	176	26.11.2022	1	1	0	0		Road
		TOROKINA	10,235	9,299		9,376	2,467	4,872		49	26	0	710	0	
	51	BURUE	2,086	1,771		1,776	491	1,013		12	9	0	303		
	11	Marowa	522	222	Piwa HC	210	66	128	02.12.22	1	1	0	59		Walk
		Kakanea	89	188	Piwa HC	181	48	99	30.11.22	1	1	0	37		Walk
		Tekomo	61	106	Piwa HC	88	21	50	01.12.22	1	1	0	21		Walk
		Kegiri	407	206	Piwa HC	146	36	84	01.12.22	1	1	0	26		Walk
		Koiare	373	309	Piwa HC	289	86	173	02.12.22	1	1	0	59		Walk
		Manarube	80	0	Piwa HC										Abandoned
		Risini	141	159	Piwa HC	133	35	76	01.12.22	1	1	0	18		Walk
		Atsovape	156	305	Piwa HC										Abandoned
		Kovilas	113	216	Piwa HC	213	49	115	01.12.22	1	0	0	19		Walk
		Kario	87	0	Piwa HC	222	63	122	01.12.22	1	0	0	24		Walk
		Torokina District Office	56	61	Piwa HC	74	22	42	29.11.22	1	1	0	19		Walk
		Kakato			Piwa HC	115	39	66	01.12.22	1	0	0	11		Walk
		Astalpa			Piwa HC	30	10	17	01.12.22	1	1	0	1		Walk
		Laruma			Piwa HC	75	16	41	02.12.22	1	1	0	9		Walk
		NAGHAREGHE	3,392	2,643		2,668	646	1,431		23	3	0	407		
	24	Kotsilamo	411	152	Piwa HC	168	44	94	30.11.22	1	1	0	30		Walk
		Vanua	503	32	Piwa HC	130	30	72	30.11.22	1	1	0	24		Walk
		Kebegho	35	41	Piwa HC					1					Included Under Vanau
		Keparitsi	93	37	Piwa HC					1					Included Under Vanau
		Masamoa	85	173	Piwa HC	116	31	67	29.11.22	1	0	0	17		Walk
		Kevirube	117	0	Piwa HC										Abandoned
		Kasenena	87	180	Piwa HC	164	42	88	29.11.22	1	0	0	18		Walk
		Lasluk	63	0	Piwa HC	81	11	23	29.11.22	1	0	0	11		Walk
		Piguh 1	61	118	Piwa HC	117	19	63	29.11.22	1	0	0	9		Walk
		Piguh 2	26	0	Piwa HC					1					Included Under Piguh 1
		Vanua Poka	24	0	Piwa HC										Abandoned
		Kepuopuoko	58	62	Piwa HC	73	17	37	29.11.22	1	0	0	11		Walk
		Sikeneowa	84	188	Piwa HC	102	22	54	30.11.22	1	0	0	14		Walk
		Vakovi	149	183	Piwa HC	207	50	118	01.12.22	1	0	0	47		Walk
		Gotana	141	158	Piwa HC	160	46	85	29.11.22	1	0	0	33		Walk
		Tsito	163	182	Piwa HC	192	47	102	29.11.22	1	0	0	46		Walk
		Uveuvepa	137	0	Piwa HC										Abandoned
		Tavu	182	86	Piwa HC	166	49	96	30.11.22	1	0	0	8		Walk
		Kurupa	353	188	Piwa HC	156	31	78	30.11.22	1	0	0	9		Walk
		Kokotuo	303	312	Piwa HC	214	39	109	30.11.22	1	0	0	28		Walk
		Longkogavi	245	549	Piwa HC	284	70	159	30.11.22	1	0	0	31		Walk
		Piwa Health Centre	41	0	Piwa HC					1					Included Under District Office
		Magini Community School	19	0	Piwa HC					1					Included Under Masamoa
		Kawai Community School	11	0	Piwa HC					1					Included Under Koiare
		Mitsikori		NEW	Piwa HC	252	78	138	30.11.22	1	0	0	58		Walk
		Kenabaki		NEW	Piwa HC	86	20	48	30.11.22	1	1	0	13		Walk
		TOBERAKI	2,805	3,209		3,338	954	1,622		8	8	0	0		
	9	Menjai	411	604	Moratona HC2	555	136	274	23.11.2022	1	1	0	0		Road
		Mosino	485	560	Moratona HC2	636	206	311	23.11.2022	1	1	0	0		Road
		Agabai	325	379	Moratona HC2	332	133	151	26.11.2022	1	1	0	0		Road
		Nigitang	292	367	Moratona HC2	478	124	236	26.11.2022	1	1	0	0		Road
		Kupon	173	0	Moratona HC2										Non Existant
		Toroba	580	685	Moratona HC2	724	211	359	27.11.2022	1	1	0	0		Road
		Jaba	297	396	Moratona HC2	390	98	178	28.11.2022	1	1	0	0		Road
		Marau	210	171	Moratona HC2	185	34	90	23.11.2022	1	1	0	0		Road
		Morotona Health Centre	33	47	Moratona HC2	38	12	23	01.12.2022	1	1	0	0		Road
		GOOREH	1,951	1,676		1,594	376	806		6	6	0	0		
	7	Momarego	325	182	Moratona HC2	223	48	99	26.11.2022	1	1	0	0		Boat
		Mabes	411	375	Boku HC3	263	66	147	02.12.22	1	1	0	0		Road
		Jarara	568	582	Boku HC3	525	124	264	01.12.22	1	1	0	0		Road
		Mariga	379	349	Boku HC3	284	71	138	01.12.22	1	1	0	0		Road
		Kongara	176	188	Boku HC3	178	39	92	01.12.22	1	1	0	0		Road
		Murua	85	0	Boku HC3	121	28	66	01.12.22	1	1	0	0		Road
		Momarego Community School	6	0	Moratona HC2										Non Existant