

ROTARIANS AGAINST MALARIA



LONG LASTING INSECTICIDAL NET DISTRIBUTION REPORT

EASTER HIGHLANDS PROVINCE Daulo, Unggai Benna And Kainantu Districts

Carried Out In Conjunction With The Provincial Government And Church
Health Services Of Eastern Highlands Province

With Support From The Global Fund

1st June to 30th June 2021



Table of Contents

Executive Summary	3
Background.....	4
Schedule	6
Methodology.....	7
Results	11
Conclusions.....	12
Acknowledgements	14
Appendix One – History Of LLIN Distribution In PNG	16
Appendix Two – Malaria In Eastern Highlands Province Compared With Other Provinces...	19
Appendix Three - Malaria By Altitude	21
Appendix Four – Other Photographs	22
Annex One	Detailed Distribution Data For Daulo District
Annex Two	Detailed Distribution Data For Unggai Benna District
Annex Three	Detailed Distribution Data For Kainantu District

Executive Summary

Eastern Highlands Province is a highlands province on the mainland of Papua New Guinea (PNG). Most of the people living in Eastern Highlands live at altitude which are generally malaria free except for about 0.5% that live below 1200m in Obura Wonenara. About 6% live at altitudes where malaria is considered absent (above 2000m), 32% in potentially epidemic areas (1200-1600m) of malaria and the remaining population (1600-2000m) where only *P. vivax* is considered to be transmitted.

The family level survey and distribution of Long-Lasting Insecticidal Nets (LLINs) was carried out in Daulo, Unggai Benna and Kainantu Districts between 1st to 30th June 2021. This follows on from the LLIN distributions done in Goroka (Rural), Henganofi, Lufa, Obera Wonenara and Okapa in 2020.

Table One shows the estimated population to be covered by the program together with the actual population found along with the number of LLINs distributed by district. In total, 156,735 LLINs were distributed to a population of 313,710 people. This resulted in distribution of 50.0 nets for every 100 people in the province.

TABLE ONE – Population And Nets Distributed

District	Population from 2000 Census	Population Of Targeted Areas In 2018	Estimated Target Population 2021	Population Surveyed 2021	House Holds Surveyed 2021	Nets Issued 2021	Nets Distributed Per 100 People
Daulo	30,960	54,202	59,574	59,628	14,935	30,482	51.1
Kainantu	91,771	163,459	179,659	183,369	37,968	90,773	49.5
Unggai Benna	45,006	71,679	78,783	70,713	16,933	35,480	50.2
Totals	167,737	289,340	318,015	313,710	69,836	156,735	50.0

A further 271 LLINs were donated to health centres as nets were surplus to requirement, were no longer in bales and in most cases could not be easily returned to a central location. These nets would be distributed to pregnant mothers and for use over hospital beds where needed.

The overall operational cost of the programme was K564,142.91 Kina (Approximately US\$ K156,706.36) resulting in a cost of about 3.6 Kina or US\$1.00 per net delivered. This was about 9.0% under the anticipated budget. Most of the savings came in trekking costs which suggests that areas are now more accessible than in the past. Overall, this is a very good achievement both in cost and the time (30 days) in which the whole program was conducted.

Overall, the distribution went well in Eastern Highlands Province with excellent collaboration from provincial health authorities which resulted in all targeted communities being reached and all household receiving nets.

Feedback from partners and communities suggest they were happy with the methodology used as the process appeared transparent to all concerned. However, as always, there were a few families who complained that they did not receive enough nets but for the most part it is believed that this was a result of families not fully understanding the allocation system used.

Global Fund supplied and donated all the nets for Eastern Highlands Province as well as the distribution costs for the province. The nets distributed in Eastern Highlands Province are different from those in the past and are known as Yahe LLINs and we hope that these are better quality LLINs than those distributed in the last few years.

The history of LLIN distribution in PNG and Eastern Highlands Province is discussed in Appendix One and the malaria situation and stratification of malaria in Eastern Highlands Province are discussed in Appendix Two and Appendix Three. Historically it can be said that LLINs have had a tremendous impact on malaria in Papua New Guinea but recent distributions in lower lying provinces have not resulted in decreased malaria but we hope they are sufficient to keep malaria at bay in these areas for another three years.



Fig.1 – Initial Planning Meeting With Kainantu District Staff

Background

Rotarians Against Malaria (RAM) is a nationally based organisation which was formed in 1997 by the Port Moresby Rotary Club in recognition of the tremendous burden that malaria imposes on the people of PNG.

RAM has an organizational mandate to work in malaria control and the distribution of LLINs in Papua New Guinea and has been working for many years with the National Department of Health (NDOH) and other partners including multilateral and bilateral agencies such as UNICEF and WHO (World Health Organisation), NGOs and church groups. (See Appendix One for full history of LLIN Distribution)

Since 2010, RAM has been coordinating the distribution of nets to all districts and provinces on a three-year recurrent cycle. This effectively means that RAM visits every village in PNG every three years. RAM has been funded by the Global Fund since 2009 and since 2017 also from Against Malaria Foundation (AMF) which supplied PNG with the majority of its nets in 2017 and from 2018 onwards to all areas below 1600m only where most of the malaria transmission can be found. During the period 2017 to 2020, the Global Fund resources were therefore mainly used to fund the LLIN distribution costs and other relevant administration costs. However, in 2020, PNG has been lucky to receive a donation of net from the Chinese Government and these were used for all areas between 1600-2000m of altitude. It should also be noted that since 2015, the National Malaria Control Program no longer distributes nets in areas above 2000m as these are now considered too cold for malaria transmission to occur. The situation has changed in 2021. AMF no longer is a donor to PNG and all costs have now reverted to Global Fund. With this change, RAM will have difficulties covering areas from 1600-2000m but we are very fortunate in that the Global Fund allowed saving from 2020 to be used to procure nets for 2021 for this altitude. At present, the situation for this altitude of 1600-2000 remains tenuous for 2022 and 2023.

Generally, LLINs have been distributed to household level throughout the country but when shortage of funds occurred, different strategies of distribution have been used as mentioned above.

PNG can be roughly divided into five epidemiological zones.

- a) Areas which lie above 2000m in altitude which no longer receive LLINs as malaria transmission is not considered likely at these altitudes.
- b) Low lying areas of the country up to 1200m which have stable malaria endemicity and often have poor access to health continue to have household distributions.
- c) Areas from 1200 to 1600m which are generally considered to be of low transmission potential but traditionally have had occasional malaria epidemics due to poor immunity and changing weather conditions. LLIN distribution continue in these settings.
- d) Highlands regions between 1600 to 2000m in altitude such as Mount Hagen which have low malaria endemicity and generally easy access to health services. These are low priority areas and when funding is not available are left out. However, to date, these areas have been covered. From 2015 to 2016, these areas received nets for Under Five children only, and since 2017, to date, RAM has managed to find alternative sources to cover these areas. For example, in 2020, nets for these areas have been sourced from the Chinese Government and in other areas from the Global Fund. Fortunately, there was sufficient funds to cover these areas in 2021.
- e) In urban and peri-urban areas such as Port Moresby which are low lying areas with easy access to health, nets will not be distributed during funding constraints. Nets to these areas will be supplied through the private sector. Similarly, due to funding constraints in 2015, Lae City had Under Five Campaign LLINs only.



Fig.2 – Microplanning At Barabundaira (Left) And Asaro (Right)

As a result of this stratification and when funds had been reduced such as at the end of 2014, areas above 2000m no longer received nets and areas from 1600 to 2000m only received under five campaigns in 2015 and 2016. However, fortunately, due to the LLIN donation from the Against Malaria Foundation (AMF) in 2017, all areas received household distribution of nets except areas above 2000m, and some urban areas such as NCD, Goroka, Mount Hagen and Mendi. After 2018, AMF only donated nets to areas below 1600m but the country has been lucky to find funding to fill this gap of between (1600-2000m) in 2019, 2020 and for 2021 through donations from the Global Fund (2018-2021) and the Chinese Government (2020). However, funding for areas between 1600-2000 metres now remains tentative after 2021 as AMF no longer supplies nets to PNG and funds from the Global Fund are not presently enough to cover these areas above 1600m.

One of the conditions of the AMF donation is that RAM would strengthen the way in which surveys are carried out. These new innovative processes are described in the Methodology Section. These methodologies are now being carried out since the beginning of 2017. The major change to the survey methodology suggested by AMF is that previously a village meeting was called after a survey was carried out where names of family members were read out to

ensure that all households had been surveyed. Instead of this process, a summary of every village surveyed is posted for 24 hours in a public place so that villages can ensure that all their family members have been included in the survey. As a further verification process, members of RAM and local health staff team carry out random house surveys of 6% of households in every village to ensure that the survey process has been carried out correctly.

For household LLIN distributions, regardless of where they are carried out, they must include a survey and a distribution phase though implementation methods may considerably vary depending on specific circumstances. RAM's approach has been to concentrate on programme quality thus RAM develop methodologies that ensure that all recipients in an area actually receive nets and that this can be reported accurately.

The other major change to the original PNG programme of 2004 to 2009 carried out by the NDOH is that nets are allocated to families on a needs basis rather than simply the number of people in the family. Data analysis of National Capital District (NCD) data has shown that this gives a ratio of nets needed to be about 47 for every 100 people. In the previous LLINs distribution of Round-3 in 2006 to 2010, nets were allocated at a rate of one net to every 2.5 people. With the programme only receiving 80% of LLIN needs, and most provinces distributing for example two nets to families of three, in practically every province, nets ran out before the end of the distribution. The RAM programme makes all attempts to assure that this distribution anomaly does not happen by collecting all population information at the beginning of the program and then allocate the nets based on family needs. This strategy is practiced to ensure that all families receive nets throughout any given province. The only scenario where survey and net distribution may be done simultaneously is in very remote locations where it is not practically possible to return a second time to a location. This is particularly the case in remote villages which can only be reached by boat or very long treks and it is costly and impractical to return to the villages for a second time.



Fig.3 – Microplanning (Left) And Survey Volunteer Training (Right) In Yauna

In terms of coordination, RAM officers are allocated to specific LLGs or health centres where they coordinate the programme together with local health staff. In this capacity, RAM officers act as facilitators in terms of technical guidance to district health teams in each LLG as well as acting as financial officers and assuring quality control of activities taking place.

Schedule

Referring to Table Two, it can be seen that the distribution in Eastern Highlands started on the 1st June and ended 30th June 2021. The distributions in all three districts and all health facilities were practically carried out at the same time, so remarkably, the whole operation was

concluded in Eastern Highlands within 30 days. Please refer to Table Two for details of distribution and survey in each province.

TABLE TWO
General Timetable Of Activities In Eastern Highlands Province

District	Survey		Distribution	
	Start	Finish	Start	Finish
Daulo	01.06.21	10.06.21	10.06.21	16.06.21
Kainantu	03.06.21	16.06.21	09.06.21	30.06.21
Unggai Benna	04.06.21	14.06.21	14.06.21	25.06.21

Methodology

Prior to planning and implementation, a master list of all villages of Eastern Highlands Province was drawn up using data from the 2000 Census and the last RAM survey of 2018 in Eastern Highlands Province. Villages in the list were organised by LLG and Ward. In this master list, the estimated population for 2020 for each village was estimated and recorded in two ways. Firstly, the population of each village is estimated using population figures from the 2000 Census and the estimated annual growth rate for Eastern Highlands Province and then secondly, by taking the population surveyed in 2017 and 2018 and applying the annual growth rate to each village.

In all areas, Health Centres form the hub from which distribution takes place to the respective villages in each health centre's catchment area. Therefore, with the planning data at hand, RAM staff work together with the Provincial Health Office to allocate every village to its nearest health centre (government or Church Based) and outlines how each village is reached from each health centre. From this it is possible to create a budget, estimate how many nets are needed to be sent to each health centre and work out any other logistic considerations such as use of airplanes or boats to deliver nets to some remote areas.

Once all logistical needs are calculated and nets delivered to the province or district, a RAM team will travel to the province. Once they are in the province, RAM officers are allocated to work with each health centre which becomes the centre of operations for that area.

With the arrival of RAM officers, each health facility identifies health staff members or non-health community volunteers to be involved with the programme. If local health staff are selected, then they are referred to as District Health Team (DHT) but if a non-health staff is selected then they are termed as a Team Leader. Both DHTs and Team Leaders are responsible for the survey and distribution of nets. Each DHT and Team Leader works only in the area in which the health facility is based.

Before any activities take place, RAM officers are expected to work with health staff and other team leaders to make detailed plans (micro-planning) of their activities for training, survey, verification and distribution of nets. This process involves making maps of the area, deciding how many teams are needed, and then making detailed work plans for each of the team members. This process also involves verifying that no villages have been left out of the census list and that the whole area is covered.

Also prior to field activities in any given LLG or health centre, a social awareness campaign was carried out in all villages informing villagers of the upcoming survey and distribution. This was also used as an opportunity for RAM officers to become familiar with each area. During

this process, key malaria messages were also discussed with villagers such as the need to use LLINs every night.

During the social awareness campaign, a daylong training meeting is normally held at each health facility for all DHT members in that area who jointly carry out the micro-planning exercise. These training and micro-planning sessions as well as all other activities associated with the programme are coordinated by RAM project officers together with health counterparts at provincial and district levels. RAM officers also have the responsibility to ensure the LLINs operation is kept in line with the original budget.

Survey

The survey was carried out in the following way.

- 1) When arriving at a village and before starting the census process, a meeting was held with village elders explaining the process.
- 2) If village elders have an up to date list of all village occupants, the team would use this list to compile a census but still visit every household to confirm this information.
- 3) Where a village is small, e.g., less than 30 families, team members may carry out the census by themselves.



Fig.4 Survey Volunteer Training At Segehere In Two Different Location

- 4) Where villages are large, village volunteers were identified with the assistance of the village chiefs, elders, health staff and councillors. One volunteer was chosen for each group of about 50 families with volunteers chosen by natural divisions in the village e.g., clans where one volunteer would make a list of only one clan. These volunteers were trained to carry out the survey by actually surveying houses with the team leaders supervising and assessing the recording. Once the team leader was confident that the volunteers knew the survey methodology, they were left to continue with the household survey with survey teams returning within an agreed period to verify the work of the survey volunteers, collect survey books and also to pay the survey volunteer, provided that the work was carried out correctly. The training of volunteers may occur in groups or individually depending on access to the village and its proximity to other villages.
- 5) For each household surveyed, all family members who normally reside at the household for a minimum of nine months were recorded by Name, Age, Sex and Relationship to head of household. All names and other information were recorded in the survey book with one survey form being used for each household.
- 6) After surveying a household, a white copy of the census form was given to the head of household or most senior person present in the household.
- 7) Where a whole household was absent, information was taken from the neighbours and the white survey form left with them.
- 8) In all cases, after the census/list was finished, all the information about the households and number of household members is entered into a summary sheet. This list is then hung in a public place where all villages can verify that the right number of family members for each household has been recorded and that all families have been included in the survey. After

the list has been in a public place for 24 hours, then the volunteer requests for the RAM officer and or DHT to visit the village.

- 9) RAM officers and DHTs must visit three households randomly from each survey book (6%) and verify that the survey has been carried out correctly. Only when this has been done, then the volunteer can be paid.
- 10) If a village was surveyed by more than one volunteer, then volunteers were asked to work together so that lists can be hung together and the village volunteers can be verified at the same time. This process also ensures that households do not appear on more than one list. After this process, both the volunteers and the village elders sign a form to verify that this was done.
- 11) All village volunteers received a standard payment of 20 kina a day. Experience has shown that volunteers can usually only survey about 25 households a day, so for the most part, they would receive up to two days' allowance to complete a survey book (50 households).
- 12) All volunteers were also given a small training manual. Contained in this training manual are key health education messages about malaria which volunteers are expected to discuss with households. This perhaps is the only project in PNG that is able to reach down to potentially every household in the country.



Fig.5 – Survey Volunteer Training At Barabandaira (Left) And Goroka Hospital (Right)

To aid with the survey, the master plan with names of all census units in all the wards in the district had been printed out and given to all the DHTs and team leaders. This document also provides the projected population per census unit as well as other information which might be useful to the area concerned.

After collecting survey data from each village, the information is immediately compared with the data on the master sheet. Where the surveyed population is very different from the projected population, the project staff make enquiries into the reasons for these discrepancies.

Following the survey, all data was entered into a computer where possible or entered into a master sheet of the area concerned. For each village, nets were allocated to each family on a needs basis and this is also entered into the computer or master sheet. This process ensured that all villages received nets and that there would be no shortfalls.

The needs basis in PNG is based on the assumption that children under the age of six sleep with their parents, after which boys and girls are grouped separately from their parents. Nets are also allocated based on the number of children in the house, their ages, and whether there are other dependents living in the households such as grandparents. A full description of the allocation system can be obtained from RAM officers but suffice to say a family of four could receive between one to four nets depending on the sex and age of family members.

Nets are allocated to each LLG based on assumed populations of each LLG and it was important prior to the distribution to ensure that when allocations had been carried out to families and villages that there were enough nets available to cover each and every family.

Distribution

There was no official launch for the LLINs distribution in Eastern Highlands Province. However, prior to distribution there was a social awareness phase where the project teams informed communities about the arrival of the distribution teams, especially those accessible by road.

The LLINs were then distributed to teams depending on the needs of each village. The LLINs were then distributed by village or wards depending on whether villages were close together. In this latter case, a central location was identified in the ward and then distribution of nets was carried out. In terms of distribution sites, villages were organised in different ways to make the flow of nets easy and effective. However, the actual organisation depended on each team and the structure of the various groups receiving nets.

All net packaging was opened at distribution site with a district code printed on each net e.g., EHP21 meaning Eastern Highlands Province 2021. This code is added to identify nets to assist in future monitoring exercises as well as discouraging householders from selling the nets on the open market.

Some examples of the process used to control the crowd includes;

- Arranging the people according to the serial numbers in the survey books e.g., 72001 - 72050 and then calling the names and the serial numbers.
- Call the names of the owners of the households, collect the white copy and give the nets.
- Wait for everyone to come to the distribution site, collect all the white copies and sort the copies with the pink copies. Call the names on the white copies and give the nets.

Some of the following control methods were used.

- Everyone who presented with a white copy was given LLINs at the distribution site with LLINs only given to the owner of the house or a member of the house whose name is written on the back of the survey form.
- Those people who lost the white receipts were left to the end of each distribution, with nets only being issued if the name of the person collecting the nets was found on the back of the pink copies.
- For those families who were absent at the time of distribution, their names were written in a form – MOSQUITO NETS HELD IN TRUST BY VILLAGE CHIEFS FORM and the nets allocated to missing families were given to chiefs or any person entrusted by the community with the forms for these families to collect their LLINs later.
- Householders are now being asked to make a thumb print as proof of delivery of nets to a household. The Global Fund had formally asked that householders should sign for delivery of nets. This was considered problematic as many householders are illiterate and even where householders can write, this process takes a long time in what is often a very chaotic and charged environment where speed is of the essence.

It should also be noted that surveys and distributions took place at more or less the same time in some remote places of Eastern Highlands Province. This is particularly true for mountainous villages or small islands which might take several hours or days to reach. In these instances, estimations based on the 2000 Census data and local knowledge used to pre-allocate nets. Teams were then dispatched to these areas with nets. On arrival in these remote places, surveys took place and were immediately followed by a distribution based on the survey results.

Other details

In the case of Eastern Highlands Province, all LLINs were ultimately delivered to Lae by ship from China in ten containers. These were a new type of nets known as Yahe. All these nets are light blue in colour. All nets arriving in Lae were first stored in the Mapai Transport yard before being sent by road in their containers to the Mapai Yard in Goroka. From Mapai in Goroka four contains were sent to Kainantu, one to Kassam and two to Asaro. From Mapai, the remaining three containers were unloaded and sent to Unggai Benna.

Results

Table Three shows the estimated population and actual population found in Eastern Highlands by district along with the number of LLINs distributed and Table Four shows the number of nets distributed by LLG. In total, 156 735 LLINs were distributed to a population of 313 710 people. This resulted in distribution of 50.0 nets for every 100 people in the province.

TABLE THREE
Nets Distributed At District Level In Eastern Highlands Province

District	Population from 2000 Census	Population Of Targeted Areas In 2018	Estimated Target Population 2021	Population Surveyed 2021	House Holds Surveyed 2021	Nets Issued 2021	Growth Rate Against 2018 Survey	Nets Per 100 People
Daulo	30,960	54,202	59,574	59,628	14,935	30,482	3.23	51.1
Kainantu	91,771	163,459	179,659	183,369	37,968	90,773	3.91	49.5
Unggai Benna	45,006	71,679	78,783	70,713	16,933	35,480	-0.45	50.2
Totals	167,737	289,340	318,015	313,710	69,836	156,735	2.73	50.0

TABLE FOUR
Nets Distributed At LLG Level In Eastern Highlands Province

LLG	District	Population from 2000 Census	Population Of Targeted Areas In 2018	Estimated Target Population 2021	Population Surveyed 2021	House Holds Surveyed 2021	Nets Issued 2021	Growth Rate Against 2018 Survey	Nets Per 100 People
Asaro/Watabung Rural	Daulo	30,960	54,202	59,574	59,628	14,935	30,482	3.23	51.1
Kainantu Rural	Kainantu	84,983	152,884	168,036	167,848	35,332	83,015	3.16	49.5
Kainantu Urban	Kainantu	6,788	10,575	11,623	15,521	2,636	7,758	13.64	50.0
Unggai Benna Rural	Unggai Benna	45,006	71,679	78,783	70,713	16,933	35,480	-0.45	50.2
Totals		167,737	289,340	318,015	313,710	69,836	156,735	2.73	50.0

Referring to Table Three and Table Four, it can be seen that the overall population growth rate has remained the same as the measured populations is only slightly less than that predicted. It is not clear why the population of Unggai Benna has gone down, but this could be urban drift as seen in Kainantu Urban where the population has grown considerably from the last distribution.

Table Five shows that 271 nets were left over at the end of the program and were donated to health centres. In general, these nets that were left were loose nets and no longer in bales or the nets were very few or the nets could be difficult to be returned to a central location. In general, these nets would be used for hospital beds or for antenatal mothers.

TABLE FIVE
Nets Donated To Health Facilities

District	LLG	HC	Donated
Daulo	Asaro/Watabung Rural	Watabung HC	10
		Asaro HC	47
		Kwongi HC	15
Kainantu	Kainantu Rural	Onamuga HC	50
		Yauna HC	10
		Kassam HC	37
		Omaura HC	26
Unggai Benna	Unggai Benna Rural	Goroka Hos	48
		Yabiufa HC	28
TOTAL			271

Based on Table Six, it can be seen that the overall operational cost of the programme was K564,142.91 Kina (Approximately US\$156,706) resulting in a cost of about 3.6 Kina or US\$1.00 per net delivered. This was about 9.0% under the anticipated budget. The major savings were in Trekking Costs which suggests that many areas are now more accessible than in previous years. Overall, this is very good as the cost of delivery was good and the time in which the program was carried out was excellent making for a very efficient deliver.

Table Seven shows the cell and radio coverage in district of Eastern Highlands Province which were surveyed. Overall, the cell and radio coverage is generally very good in these districts though radio network in Kainantu could be better. Theoretically, apart from a few villages, messaging of health information is generally relatively easy in most places.

TABLE SIX
Cost Of Programme In Eastern Highlands Province (All Costs in Kina)

Expense Types	Budget	Actual	Variances	% Variance
Human Resources	K311,222.40	K199,505.97	111,716.43	64.1
Fuel Cost	K38,148.00	K42,226.75	-4,078.8	110.7
Car Hire Cost	K239,400.00	K307,250.00	-67,850.00	128.3
Stationeries/Supplies	K3,000.00	K7,184.16	-4,184.16	239.5
5% Contingency	K29,588.52	K7,976.03	21,612.49	27.0
Total	K621,358.92	K564,142.91	57,216.01	90.8

TABLE SEVEN
Cell and Radio Coverage In Eastern Highlands Province

District	Villages	House Holds Surveyed	Digicel	Bmobile	Houses with Radios	Villages With Radio Networks
Daulo	309	14,935	297	213	5,694	303
Kainantu	390	37,968	348	50	5,853	321
Unggai Benna	340	16,933	292	109	4,590	300
Total	1,039	69,836	937	372	16,137	924

Conclusions

Overall, it can be said that the LLIN distribution in Eastern Highlands Province was generally a huge success both in terms of results and great collaboration between staff from RAM, provincial and district health authorities, and the Evangelical Brotherhood Church (EBC) and Salvation Army Church Health Services who have a presence in the districts receiving nets. Through this collaboration, the data suggests that all villages and practically all families in those villages received nets despite any local challenges. More importantly the whole program was carried out in record time. The only negative incident was when on 18th June 2021 a female volunteer Rose Telek was assisting in carrying out a LLIN distribution in her village of Ikana in Kainantu District when suddenly a drug addict armed with a bush knife rushed up to her threatened her and people waiting for nets with a bush knife. He removed one bale away and burnt it.

The only other major challenge, and one common to all highland provinces, was continuous rain which caused landslides and blockage of roads in some circumstances and thus delaying operations in some places.

Other than this, as with other provinces in the country where RAM has operated in over the last ten years, the methodologies used this time, including survey verification processes appeared practical and were openly welcomed by both villagers and implementers, particularly the practice of hanging up the list of names in the middle of the village following a survey. This allowed communities to feel that they were part of a transparent process. This is not to say that perhaps some extra people managed to slip into the books, but in general, it was felt that the system was fair and included practically everyone concerned. The use of the master lists also ensured that all villages were reached and accounted for.

The review of the data prior to the distribution was also important. This ensured that all villages and families received the correct numbers of nets. The 2000 Census Lists were very important to ensure that survey teams reached all villages: without the complete list of villages, it would be very difficult to make a detailed report.



Fig.6 – Survey Verification In Barabundaira (Left) And Asaro (Right)

The greatest complaint still received from communities was the number of nets they received. Even though the team explained the logic of how the allocation of nets is calculated, some families still expect one net per person, others expect it to be based on a fixed allocation based on the number of people in the family, and yet others thought they would be given nets based on the number of nets they stated they already had. This highlights that a better system of explaining the allocation system still needs to be developed. In general, unlike some previous districts covered by RAM and DHTs of Eastern Highlands Province assisted in the allocation

of the nets which meant they were in a better position to explain the distribution system on the ground. Nevertheless, despite all the difficulties involved, it would appear that the vast majority of community members accepted the outcome and there were no real problems or complaints encountered.

Acknowledgements

On behalf of the Rotarians Against Malaria household distribution team who worked in Daulo, Kainantu and Unggai Benna districts, we would like to sincerely acknowledge and thank the Eastern Highlands Province Health Authority and the District Health Staff of the three districts for the excellent help and cooperation during the Long Lasting Insecticide Nets (LLINs) distribution programme.

In particular, we would like to thank at provincial level Dr Joseph Apa (Chief Executive Officer), Mr Max Manape (Director Public Health), Mr Kairu Opai (Deputy Director District Health Services), Mr Jackson Apo (Provincial Disease Control Officer) and especially Mr Quinn Joio (Provincial Malaria Supervisor) who spent much times with the RAM team in the field.

For the district staff, we would like to sincerely thank all those who tirelessly took part in the programme, and in particular we would like to mention the following people who were instrumental in providing the local expertise and advice from planning to implementation of the programme in the three districts namely:

Daulo District

Name	Occupation	Institution
Mr. Bothas Tivine	District Malaria Officer	Asaro Health Centre
Mrs. Christine Mathias	Sister in Charge	Tafeto Sub Health Centre
Mr. Kaksy Evaiso	Community Health Worker	Kwongi Health Centre
Mr. Thomas Walep	Community Health Worker	Kwongi Health Centre
Mr. Jeffery Teon	Community Health Worker	Kwongi Health Centre
Mr. David Mebil	Nursing Officer	Watabung Health Centre
Mr. Kim Mondu	Community Health Worker	Watabung Health Centre

Kainantu District

Name	Occupation	Institution
Mr. Hans Jopa	District Disease Control Officer	Kainantu Health Centre
Mr. Enos Turia	District Health Officer	Kainantu Health Centre
Mrs. Jena Jacob	Nursing Officer	Kainantu Health Centre
Mr. Samuel Memeto	Community Health Worker	Kainantu Health Centre
Miss. Sula Tinko	Officer in Charge	Omaura Health Centre
Mr. Jacob Bafinu	Officer in Charge	Yauna Health Centre
Mrs. Benish Maren	Community Health Worker	Yauna Health Centre
Mr. Gavin Agoru	Community Health Worker	Yauna Health Centre
Mr. William Sana	Officer in Charge	Kassam Health Centre
Ms. Lyn Kwalam	Officer in Charge	Yonki Sub Aid Post

Unggai Benna District

Name	Occupation	Institution
Ms. Sellienna Angai	Officer in Charge	Segerehe Health Centre
Mr. Eluo Natareya	Nursing Officer	Segerehe Health Centre
Mr. Taniolo Nanaka	Community Health Worker	Segerehe Health Centre

Mr. Donny Bayupe	Officer in Charge	Yabiufa Health Centre
Mr. Mikala Moikandi	Community Health Worker	Yabiufa Health Centre
Mr. Benjamin Smith	Community Health Worker	Yabiufa Health Centre
Ms. Jessica Francis	Community Health Worker	Yabiufa Health Centre
Ms. Lucy Numito	Community Health Worker	Yabiufa Health Centre
Ms. Cynthia Loru	Community Health Worker	Yabiufa Health Centre
Mrs. Grace Tepori	Community Health Worker	Kesesaro Sub Health Centre
Mr. Johnson Ravana	Community Health Worker	Sioke Aid Post
Mrs. Kakaso Bora	Community Health Worker	Kapakamaligi Health Centre
Mr. Henry Birum	Community Health Worker	Kapakamaligi Health Centre

RAM would like to specially acknowledge the support received from established and local service providers for logistical support namely; Mapai for transporting ten containers from Lae to Eastern Highlands Mapai yard. Out of the ten containers four were delivered and stationed at Kainantu Health Centre yard, two at Asaro Health Centre yard, one at Kassam Health Centre yard and three remained at Mapai yard for the duration of the operations.

RAM also thanks Airport hire car, Pishon hire car, Fly hire car, Manawa hire car and all the local hire car owners for providing their service for this operation. We would not have reached many communities without the dedication of the drivers. RAM would like to also thank Puma Energy for supplying bulk fuel for the operation.

RAM also thanks all the church run health facilities coordinated under Evangelical Brotherhood Church, Salvation Army Church and also to all the Government run facilities for allowing their staff to work with the RAM team.

Last but not the least, RAM would like to extend our acknowledgement and appreciation to all the hard working volunteers and other local community leaders for ensuring all homes were surveyed and assisted in distributing all the nets. RAM thanks you all very much for your hard work, support and local expertise in making the overall program a success.

Appendix One – History Of LLIN Distribution In PNG

The use of Insecticide Treated Nets (ITNs) started in PNG in 1985 when the PNG Institute of Medical Research (IMR) conducted one of the first trials demonstrating the health impact of treating mosquito nets with insecticide. The study, done near Eastern Highlands, showed a reduction of *P. falciparum* incidence and prevalence in children below five years of age sleeping under permethrin-treated nets. The protective effect of insecticide-treated nets (ITNs) was also confirmed in many other trials around the world. As a consequence of such findings, the national malaria control program in PNG started emphasizing the use of ITNs in 1989. However, no regular or large-scale distribution of ITNs was carried out at this time.

In the following years, coverage with mosquito nets and other control interventions remained patchy and low in many parts of PNG. It was during this period that Rotarians Against Malaria (RAM) was created from the Port Moresby Rotary Club in 1997. Using a donation of 150,000 treated nets given to them from the National Department of Health (originally from AusAid), RAM successfully ran a revolving fund of nets in which nets were sold at a price which allowed the proceeds to buy more nets. RAM did this successfully for many years distributing about 45,000 treated nets a year from 2000 to 2004.

Prior to 2004, most treated nets had to be re-treated every six months or a year which requires a lot of work and organisation. In early 2004 everything changed with the introduction of Long-Lasting Insecticidal Nets (LLINs) which would last for 20 heavy duty washes and effectively no longer required to be treated repeatedly. This change in nets also coincided with the introduction of the Global Fund into PNG known as the Global Fund Round 3.

From 2005 to 2009 the malaria programme in PNG received and delivered about 2.3 million nets throughout the country at a rate of one net for every 2.5 people. The delivery of nets to village level was under the provincial health authorities and reached most parts of the country with Rotarians Against Malaria (RAM) being responsible in delivering the containers of nets to the provinces from Port Moresby and Lae where the nets arrived from overseas.

While the programme was very successful in some areas it was not so successful in others. Problems included slow release of funds from central to provincial level, some provinces not following technical guidelines given resulting in some areas not being covered, and technical and financial reporting leaving a lot to be desired in many of the provinces. When further funds became available in what is known as the Global Fund Round Eight, it was decided that Rotarians Against Malaria (RAM) would take over the coordination of the LLIN programme.

This change has resulted in RAM being responsible for the overall coordination of the LLIN distribution of LLINs in the country particularly in the areas of quantification, procurement, reporting and delivery to provincial and district level. However, the actual delivery of nets to village level is a collaboration between RAM, provincial health authorities and district health and health centre staff.

Fig.1 shows the distribution of nets to districts and provinces from 2006 to 2009 while Fig.2 shows the distribution of nets from 2010 to 2014 and Fig.3 shows the distribution from 2015 to 2017 which includes under five distributions in 2016 and 2017. Under Five distributions had been carried out in areas above 1600m and in Port Moresby and Lae City due to lack of funds. This situation changed when support from Against Malaria Foundation was received.

Up until December 2020, a total of 13.0 million LLINs had been distributed to household level under the coordination of RAM. Therefore, with the 2.5 million nets distributed from 2006 to 2009, this means that about 15.5 million nets have been delivered to household level in PNG since 2006. This is more than one net per every person in PNG. RAM has also distributed

about another 1.5 million nets to health centres for distribution to pregnant women and for prisons and boarding schools.

It should also be noted that alongside developments related to treated mosquito nets, the first cases of chloroquine-resistant malaria were reported in 1976. This progressed rapidly to widespread resistance of *P. falciparum*, and to a slightly lesser extent *P. vivax*, to chloroquine, amodiaquine and sulphadoxine-pyrimethamine (SP). In studies conducted between 2003 and 2005, even combination regimens of these drugs faced up to 29% resistance of *P. falciparum*². This situation together with Global Fund Round 8 also saw the introduction of artemether lumefantrine branded as Malawan and IPT (Intermittent Preventative Treatment) for antenatal women using Fansidar (Pyrimethamine Dapsone).

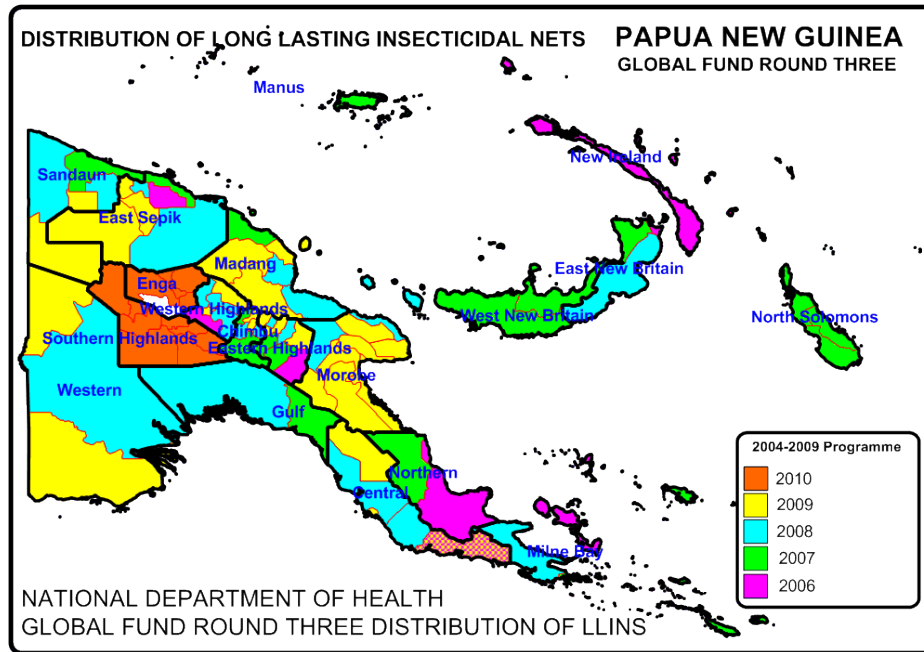


Fig. 1 Distribution Of Nets Under National Department Of Health From 2006 To 2010

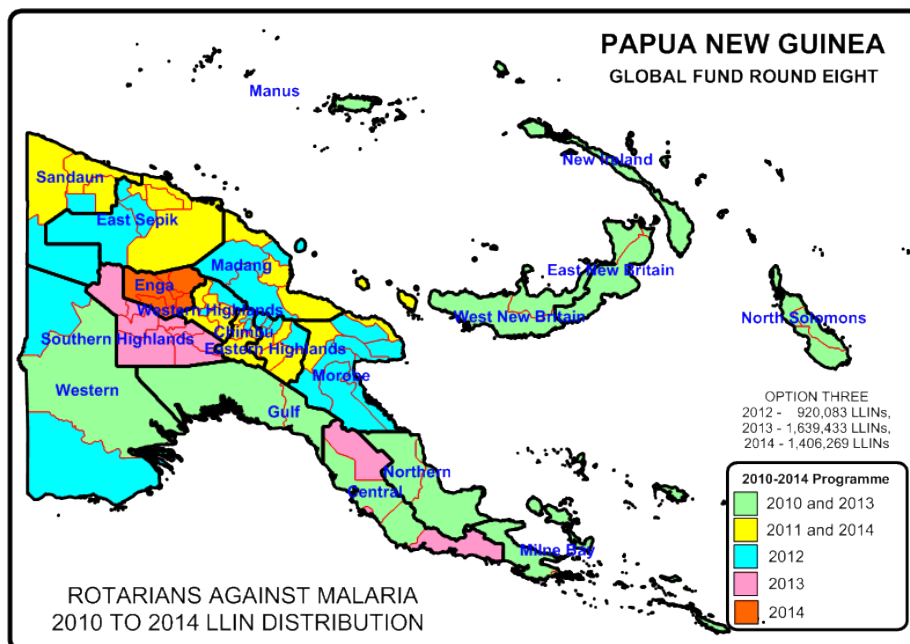


Fig.2 Distribution of LLIN Programme 2010 to 2014

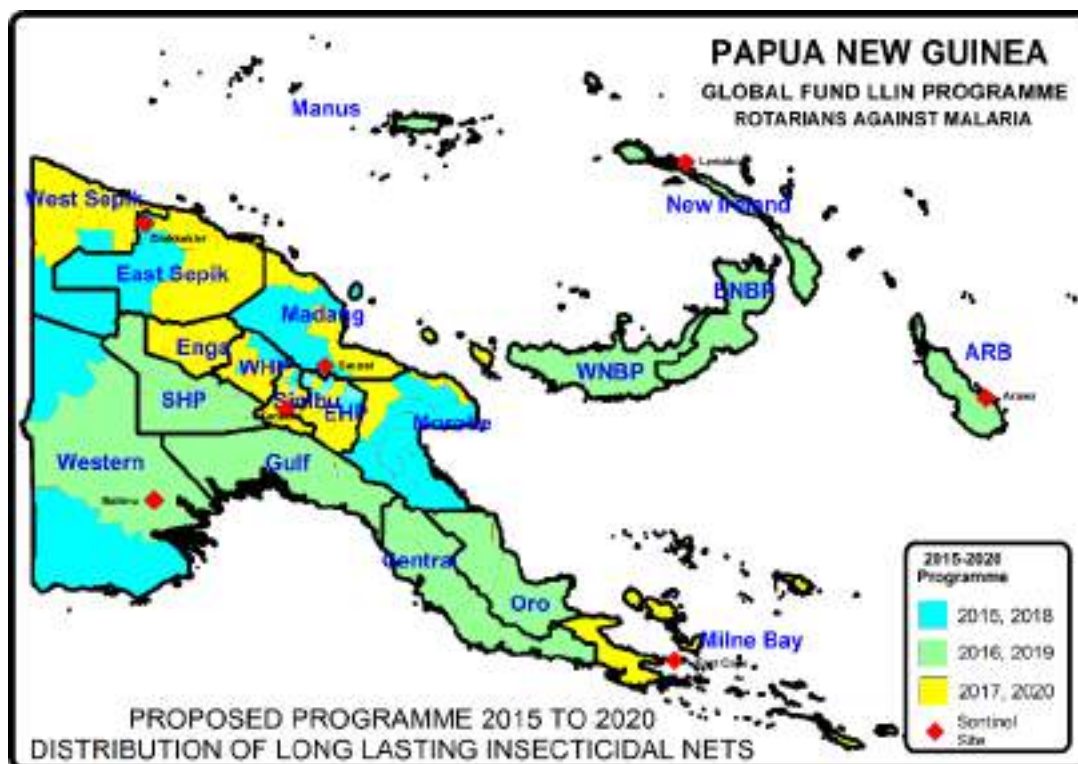


Fig.3 LLIN Distribution Programme 2015 to 2020

TABLE ONE - LLINs Delivered In PNG Under Coordination Of RAM From 2010

Period	Dates	Districts	Provinces	Nets Delivered
Phase One (2010-2011)	Nov 09 - Oct 11	50 Districts	18 Provinces	1,890,448
Year 3 (2012)	Nov 11 - Sep 12	27 Districts	10 Provinces	832,671
Year 4 (2013)	Oct 12 - Sep 13	28 Districts	12 Provinces	1,210,391
Year 5 (2014)	Oct 13 - Sep 14	23 Districts	11 Provinces	1,374,791
Year 5 (2014) No Cost Extension	Oct 14 - Dec 14	Okapa, Lufa, Madang, Angoram, Maprik, Yangoru Saussi, Wewak, Aitape Lumi, Nuku and Vanimo Green	EHP, Madang, East Sepik and Sandaun	454,806
Year 6 (2015)	Jan - Dec 2015	29 Districts	11 Provinces	932,822
Year 7 (2016)	Jan - Dec 2016	27 Districts	13 Provinces	805,597
Year 8 (2017)	Jan - Dec 2017	36 Districts	13 Provinces	1,543,947
Year 9 (2018)	Jan - Dec 2018	27 Districts	11 Provinces	1,211,922
Year 10 (2019)	Jan - Dec 2019	26 Districts	12 Provinces	1,266,525
	Jan - Mar 2020	Pomio, Rabaul, Kokopo, Samurui Murua, Kiriwina Goodenough, Ess'ala, Alotau, Wabag	East New Britain, Milne Bay, Enga	299,265
	Apr - Jun 2020	Mul Bayer, Tambul Nebliyer, North Waghi, Anglimp South Waghi	Enga, Western Highlands, Jiwaka	356,892
	Jul - Sep 2020	Chuave, Kerowagi, Karamui Nomane, Goroka, Henganofi, Lufa, Obura Wonenara, Okapa, Markham	Chimbu, EHP and Morobe	410,982
	Oct - Dec 2020	Bogia, Madang, Rai Coast, Vanimo Green, Aitape and Wewak	Madang, East Sepik and Sandau	428,229
New Funding Model (2015-2020)				7,256,181
Round Eight (2010 - 2014)				5,763,107
Overall Total Phase One and Phase Two And NFM				13,019,288

Appendix Two – Malaria In Eastern Highlands Province Compared With Other Provinces

Fig.1 shows the decrease of malaria from 2007 to 2015 in all provinces, Fig. 2 shows the actual malaria incidence in 2020 compared with other provinces and Fig.3 shows annual malaria trends from 2016 to 2020. In Eastern Highlands, it can be seen from Fig.1 that malaria decreased from 2007 to 2015 by 90% which is the highest decrease of malaria in the country during this period. In Fig.2, in 2020 it can also be seen that in Eastern Highlands the malaria incidence is 23 per 1000 which is one of the lower incidences of malaria per 1000 population in the highlands. Some of these cases probably come from the lower areas of Obura Wonenara as well as imported cases coming from Lae and Madang. Fig. 3 and Fig.4 show that malaria incidence has remained low for the last few years with Fig. 4 showing that malaria incidence dropped sharply particularly after the net distributions in 2011 and 2012. It is also very good to note that malaria in Eastern Highlands has not risen in comparison with coastal areas where malaria continues to rise since 2016. The small rises seen are likely a reflection of malaria in the coastal areas as people travel back and forth and pick up malaria on their travels.

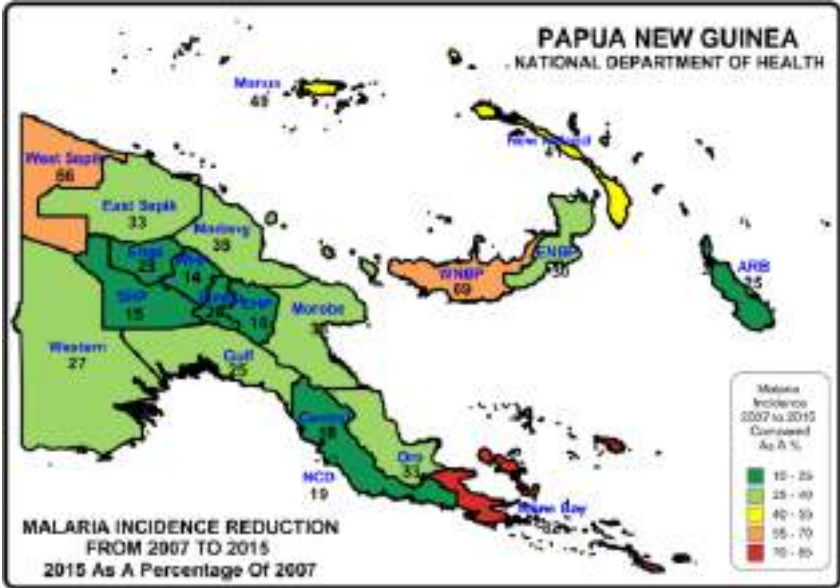


Fig.1 – Relative Reduction Of Malaria In Provinces Of PNG

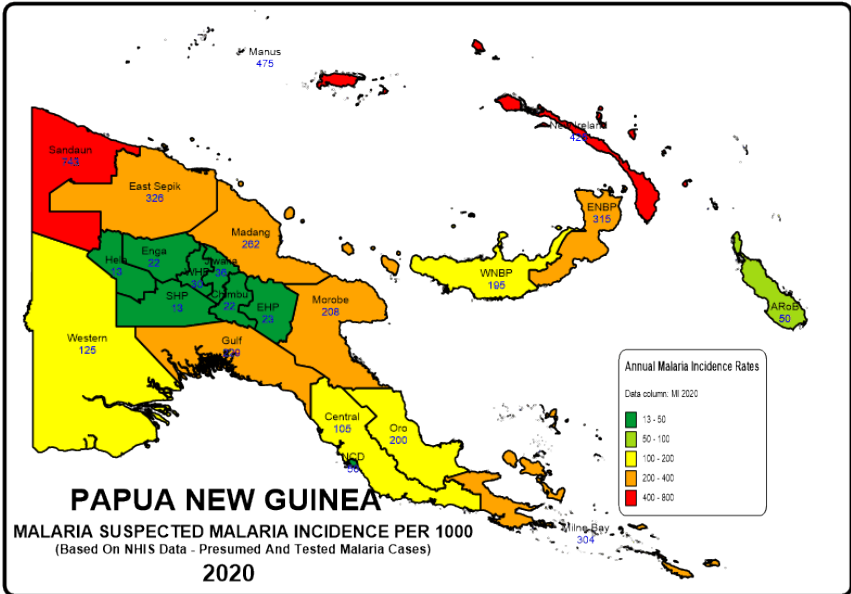


Fig.2 – Reported Malaria Incidence In 2019

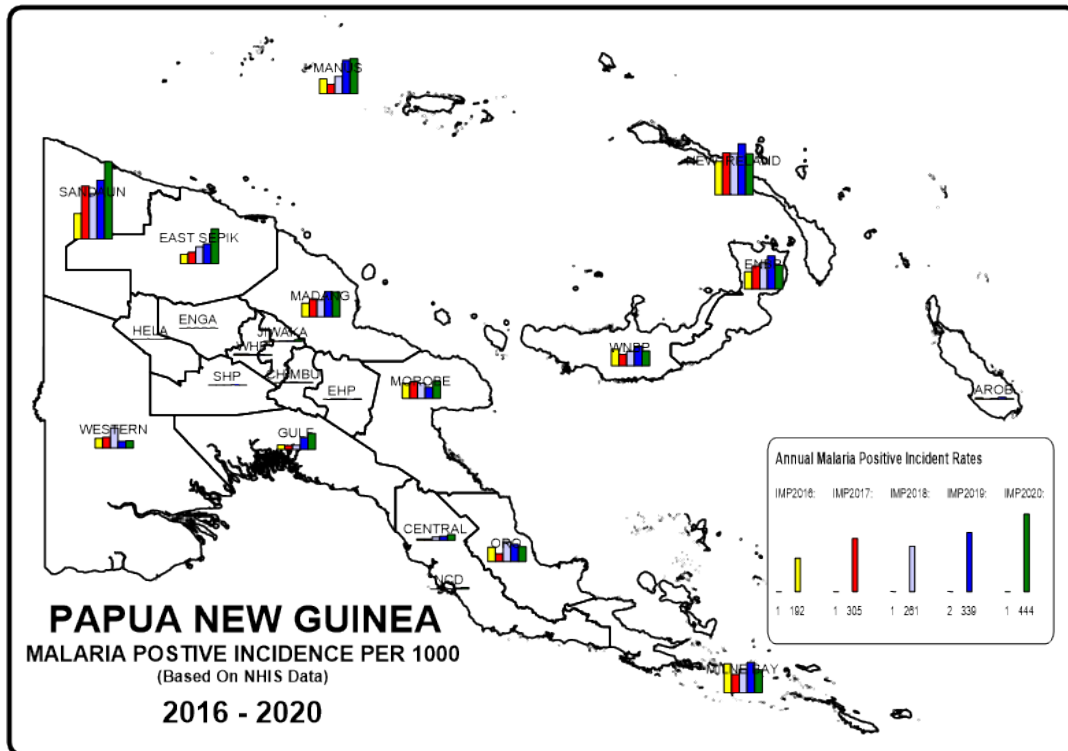


Fig. 3 - Reported Malaria Incidence In PNG From 2016 To 2020

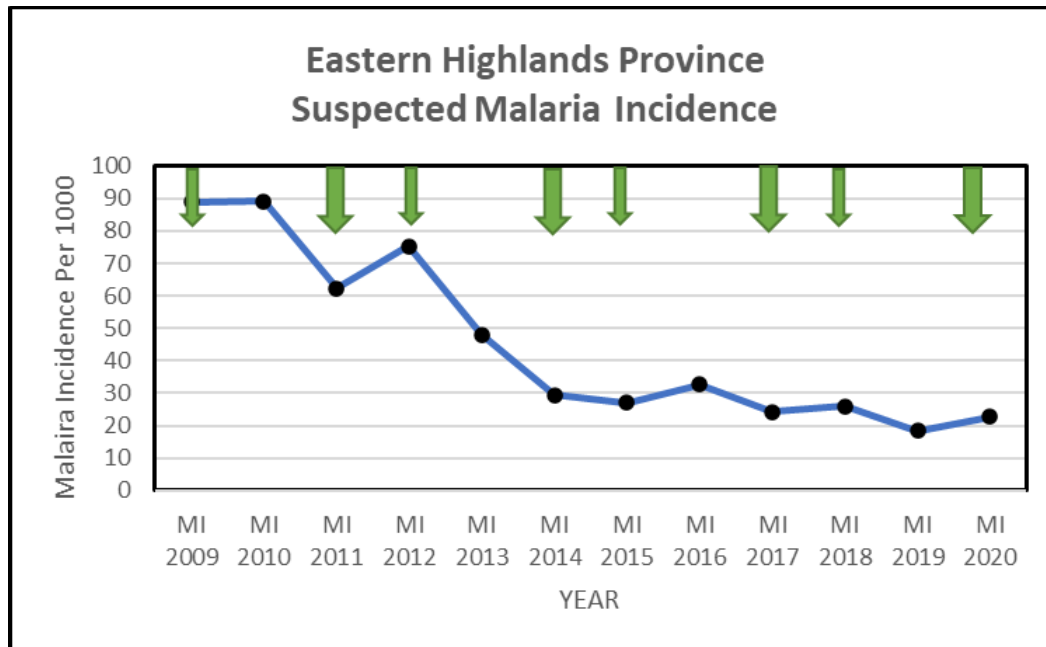
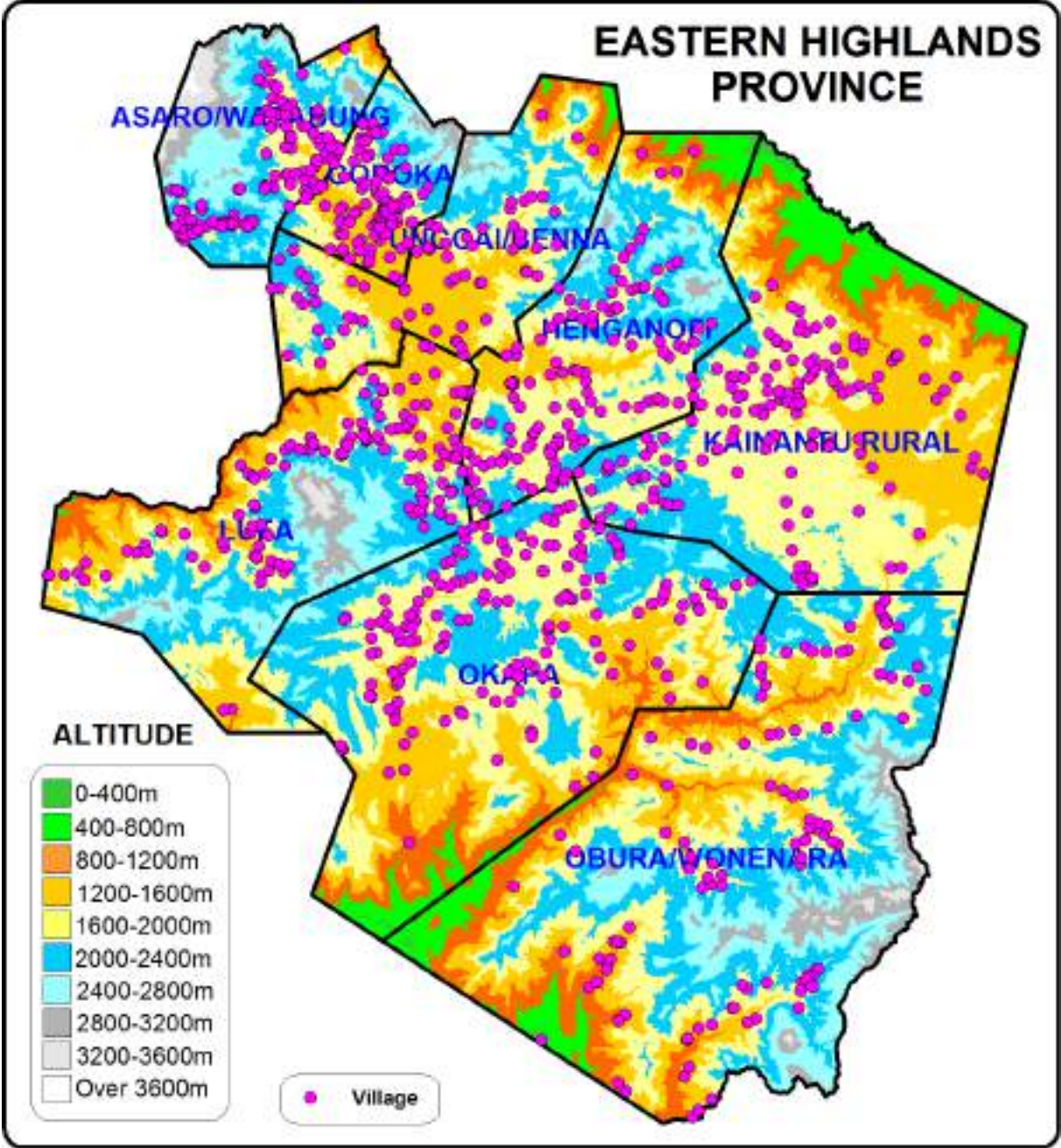


Fig. 4 – Malaira Incidence Versus Distribution Of Nets
 Large green arrows represent LLIN distributions done in Goroka, Henganofi, Lufa, Obura Wonenara and Okapa, in 2011 and 2014, 2017 and 2020 and the small green arrows represent LLIN distributions done in 2009, 2012, 2015 and 20218 in Daulo, Kainantu and Unggai Benna.

Appendix Three - Malaria By Altitude

Eastern Highlands Province is a highlands province on the mainland of Papua New Guinea (PNG). Most of the people living in Eastern Highlands live at altitude which are generally malaria free except for about 0.5% that live below 1200m in Obura Wonenara. About 6% live at altitudes where malaria is considered absent, 32% in potentially epidemic areas (1200-1600m) of malaria and the remaining population (1600-2000m) where only P.vivax may be transmitted.

Fig. 1 Altitude Zones In Eastern Highlands Province



Appendix Four – Other Photographs



Distributions In Asaro (Left) And Yauna (Right)



Distributions In Kassam (Left) And Segehere (Right)



Distributions Of LLINs In Omaura (Left) And Watabung (Right)

OTHER PICTURES



Delivery Of Container To Kassam Health Centre (Left) And Getting Stuck in Barabundaira(Right)

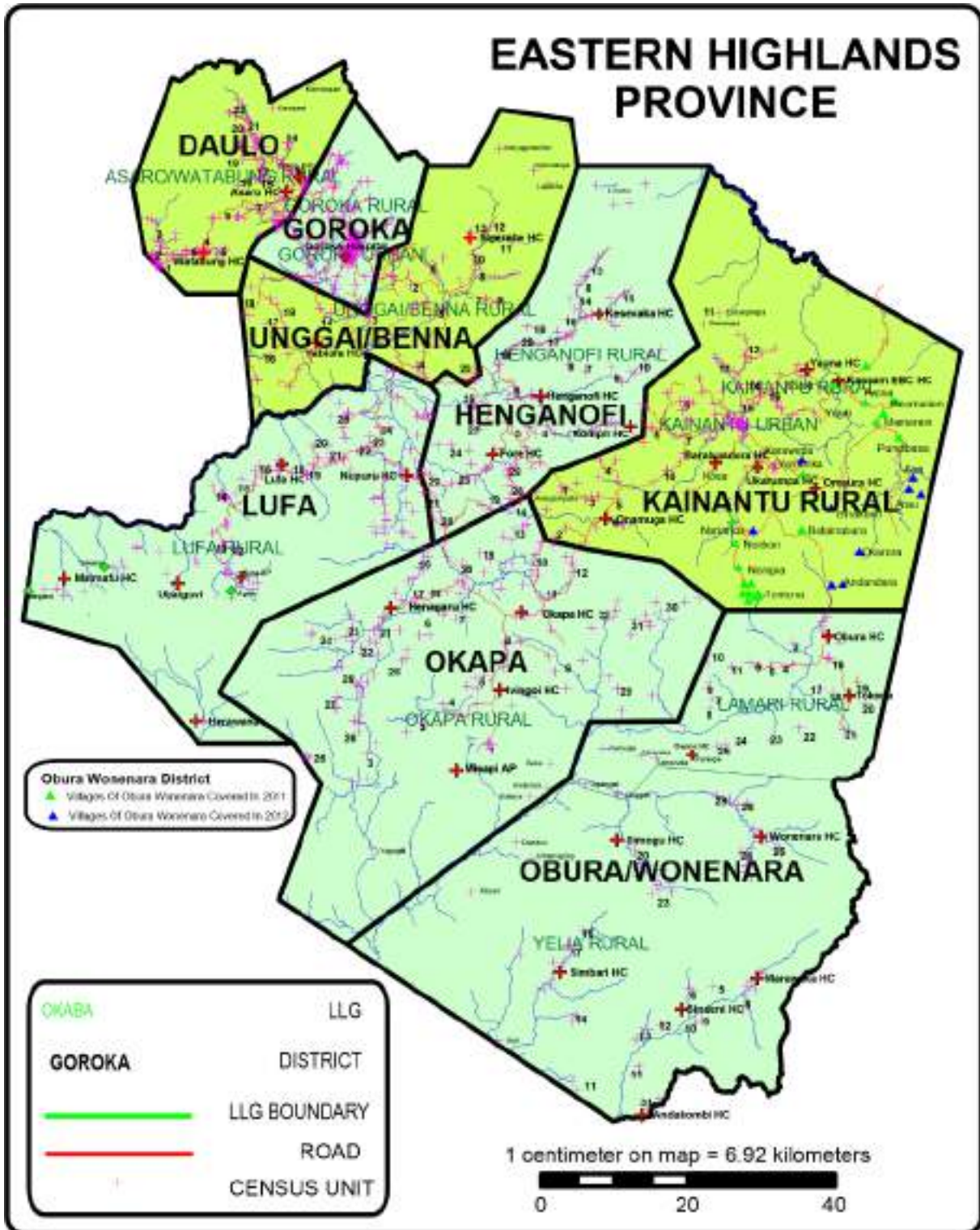


Trekkers In Asaro (left) and Barabundaira (Right)



Happy Customers In Asaro (Left) And Barabundaira (Right)

Appendix Five - Map Of Eastern Highlands Province Showing Census Points Of 2000 Census



ANNEX ONE

Areas near 2000m

EASTERN HIGHLANDS PROVINCE
DAULO DISTRICT POPULATION 2021
LLIN DISTRIBUTION SUMMARY SHEET

LLG	WARD	VILLAGE	Estimated 2021 Population Based On 2000 Census	Estimated 2021 Population Based On 2018	Health Centre	Population Surveyed	House Holds Surveyed	Nets Issued	Date Of Distribution	Villages	Digicel	Bmoblie	Houses With Radios	Radio Networks	Comments
Daulo Total			59,574	59,574		59,628	14,935	30,482		309	297	213	5,694	303	
Asaro/Watabung Rural			59,574	59,574		59,628	14,935	30,482		309	297	213	5,694	303	
1	Mangiro		2,544	3,094		2,976	650	1,465		11	11	8	8		
		Monoga	139	274	Watabung HC	66	17	32	12.06.21	1	1	0	1	NBC EHP	10 mins by Road
		Korapo	508	343	Watabung HC	239	43	116	12.06.21	1	1	1	0	KBK	10 mins by Road
		Ruarox	235	154	Watabung HC	70	16	34	12.06.21	1	1	0	1	NBC EHP	10 mins by Road
		Ronu	81	244	Watabung HC	154	26	74	12.06.21	1	1	1	0	NBC EHP	10 mins by Road
		Luname	106	325	Watabung HC	315	71	148	12.06.21	1	1	1	1	KBK	10 mins by Road
		Baranino	63	235	Watabung HC	194	40	94	12.06.21	1	1	0	0	KBK	10 mins by Road
		Kiandi	647	677	Watabung HC	609	149	302	12.06.21	1	1	1	2	0	Road/Trek
		Mangiro	766	644	Watabung HC	610	144	319	12.06.21	1	1	1	3	NBC EHP	15 mins by Road
		Fondomo/Karopa		198	Watabung HC	168	32	81	12.06.21	1	1	1	0	KBK	Road/Trek
		Nyondumo		NEW	Watabung HC	436	94	210	12.06.21	1	1	1	0	NBC EHP	30 mins by Road
		Keto Pri. School		NEW	Watabung HC	115	18	55	12.06.21	1	1	1	0	KBK	10 mins by Road
2	Kenangi		1,664	1,093		891	210	436		10	9	4	15		
		Fatau	670	237	Watabung HC	147	28	72	16.06.21	1	1	1	6	KBK	Road/Trek
		Bonga	154	74	Watabung HC	105	26	51	15.06.21	1	1	1	0	KBK	10 mins by Road
		Yaimox	83	0	Watabung HC	32	10	16	15.06.21	1	1	0	2	KBK	Road/Trek
		Oumbamonaro	83	108	Watabung HC	85	18	41	15.06.21	1	1	1	1	KBK	10 mins by Road
		Kenangi-Loru	142	123	Watabung HC	74	18	37	15.06.21	1	1	0	1	KBK	20 mins by Road
		Kotox	54	80	Watabung HC	41	13	21	15.06.21	1	1	0	3	KBK	10 mins by Road
		Konangi 1 & Kumunoro	283	347	Watabung HC	203	44	98	15.06.21	1	1	0	2	KBK	20 mins by Road
		Konangi 2		NEW	Watabung HC	111	27	54	15.06.21	1	1	0	0	BC EHP/ KB	Road/ 30 mins Trek
		Konangi 3		NEW	Watabung HC	36	9	18	16.06.21	1					
		Yaimonaro	196	123	Watabung HC	57	17	28	15.06.21	1	1	1	0	NBC EHP	Road/Trek
3	Kwongi		1,330	1,316		1,054	264	524		14	14	6	26		
		Kambiengwi	48	29	Watabung HC	22	10	12	16.06.21	1	1	0	2	KBK	Road/Trek
		Hoyamonaro	98	9	Watabung HC	29	7	14	16.06.21	1	1	0	1	BK/ NBC EH	Road/Trek
		Akumaku Monaro	100	149	Watabung HC	49	16	25	16.06.21	1	1	0	0	KBK	Road/Trek
		Kerupano	73	170	Watabung HC	92	17	45	15.06.21	1	1	1	0	NBC EHP	Road/Trek
		Kiyongo	50	111	Watabung HC	124	33	63	16.06.21	1	1	1	0	NBC EHP	Road/Trek
		Koriro	183	95	Watabung HC	163	47	80	16.06.21	1	1	0	10	KBK	Road/Trek
		Las Wara	60	95	Watabung HC	53	11	26	16.06.21	1	1	0	0	BK/ NBC EH	Road/Trek
		Homono Monaro	129	163	Watabung HC	108	23	52	16.06.21	1	1	0	0	NBC EHP	Road/Trek
		Kere	83	125	Watabung HC	97	26	49	16.06.21	1	1	0	1	KBK	45 mins by Road
		Mute	94	107	Watabung HC	57	14	28	16.06.21	1	1	0	1	KBK	Road/Trek
		Mando	92	38	Watabung HC	22	9	11	16.06.21	1	1	1	0	KBK	Road/Trek
		Wenam	208	156	Watabung HC	134	29	68	16.06.21	1	1	1	7	NBC EHP	Road/Trek
		Konangi Community School	35	69	Watabung HC	60	11	29	16.06.21	1	1	1	4	NBC EHP	20 mins by Road
		Kianu Mission	77	0	Watabung HC	44	11	22	15.06.21	1	1	1	0	NBC EHP	20 mins by Road
4	Komoingareka		2,817	1,914		2,208	521	1,087		17	15	8	75		
		Kiniku	221	104	Watabung HC	87	22	42	16.06.21	1	1	1	0	NBC EHP	Road/Trek
		Kanagomato	200	88	Watabung HC	79	19	38	14.06.21	1	1	0	0	FM/ NBC E	Road/Trek
		Ufarafaro	165	211	Watabung HC	50	8	24	14.06.21	1	1	0	2	NBC EHP	Road/Trek
		Aginari	127	55	Watabung HC	188	46	92	14.06.21	1	1	1	7	NBC EHP	Road/Trek
		Kambarafaro	177	85	Watabung HC	261	49	127	13.06.21	1	1	1	10	NBC EHP	Road/Trek
		Kangu	131	141	Watabung HC	134	32	68	13.06.21	1	1	1	6	NBC EHP	Road/Trek
		Ifanua	85	47	Watabung HC	35	9	17	15.06.21	1	1	0	1	NBC EHP	Road/Trek
		Fionoku	167	112	Watabung HC	182	45	88	13.06.21	1	1	0	3	NBC EHP	10 mins by Road
		Kirofiaka	160	173	Watabung HC	207	59	102	13.06.21	1	1	1	7	NBC EHP	Road/ 30 mins Trek
		Mombona Efaka	139	109	Watabung HC	109	22	53	13.06.21	1	1	1	4	NBC EHP	Road/Trek
		Efaka		NEW	Watabung HC	116	32	60	13.06.21	1	1	1	2	NBC EHP	Road/ Trek
		Kopailo	110	178	Watabung HC	96	27	49	14.06.21	1	1	0	0	NBC EHP	5 mins by Road
		Kiango	346	97	Watabung HC	105	29	53	14.06.21	1	1	1	6	NBC EHP	5 mins by Road
		Ruimbeka	242	118	Watabung HC	139	32	68	13.06.21	1	1	0	4	0	Road/ 30 mins Trek
		Mokane	323	252	Watabung HC	272	63	132	13.06.21	1	1	0	22	NBC EHP	5 mins Walk
		Watabung Health Centre	81	76	Watabung HC	33	7	17	14.06.21	1	0	0	1	NBC EHP	Surrounding
		Watabung Primary School	142	69	Watabung HC	115	20	57	14.06.21	1	0	0	0	NBC EHP	Road/Trek
5	Yamofe		1,782	840		1,079	317	531		9	9	3	102		
		Kiando	202	109	Watabung HC	71	26	39	11.06.21	1	1	1	2	NBC EHP	Road/Trek
		Fiu	189	122	Watabung HC	137	36	66	11.06.21	1	1	1	2	NBC EHP	Road/Trek
		Kemanido	154	58	Watabung HC	85	24	41	11.06.21	1	1	0	0	0	Road/Trek
		Imero	514	141	Watabung HC	189	77	93	11.06.21	1	1	0	32	NBC EHP	Road/Trek
		Kemabau	156	115	Watabung HC	75	25	35	11.06.21	1	1	0	6	NBC EHP	Road/Trek
		Iyanuka	106	53	Watabung HC	162	35	78	11.06.21	1	1	0	21	NBC EHP	Road/Trek
		Dumun	67	78	Watabung HC	111	29	55	11.06.21	1	1	0	10	NBC EHP	Road/Trek
		Kobemaro	185	112	Watabung HC	150	41	74	11.06.21	1	1	0	15	NBC EHP	Road/Trek
		Noirau	210	52	Watabung HC	99	24	50	11.06.21	1	1	1	14	NBC EHP	Road/Trek
6	Komongu		2,780	2,792		2,322	542	1,156		19	18	7	25		
		Lulape	391	597	Watabung HC	330	73	163	16.06.21	1	1	0	0	KBK	10 mins by Road
		Nonombaro	389	232	Watabung HC	99	26	49	16.06.21	1	1	1	0	KBK	5 mins by Road
		Atarero	221	140	Watabung HC	146	33	70	16.06.21	1	1	1	0	KBK	15 mins by Road
		Keu	246	155	Watabung HC	162	31	78	16.06.21	1	1	1	8	KBK	Road/Trek
		Aiye	137	169	Watabung HC	111	23	55	16.06.21	1	1	1	6	KBK	20 mins by Road
		Anigu	81	66	Watabung HC	95	29	50	16.06.21	1	1	0	0	KBK	20 mins by Road
		Kufamo	69	236	Watabung HC	126	28	64	16.06.21	1	1	1	0	NBC EHP	Road/Trek

LLG	WARD	VILLAGE	Estimated 2021 Population Based On 2000 Census	Estimated 2021 Population Based On 2018	Health Centre	Population Surveyed	House Holds Surveyed	Nets Issued	Date Of Distribution	Villages	Digicel	Bmoble	Houses With Radios	Radio Networks	Comments
		Helmut Trading	65	211	Watabung HC	119	21	58	16.06.21	1	1	0	0	0	5 mins by Road
		Kambaro	216	127	Watabung HC	136	33	69	16.06.21	1	1	0	0	KBK	15 mins by Road
		Fomio	56	146	Watabung HC	78	26	42	16.06.21	1	1	0	0	KBK	Road/Trek
		Umbanoi	162	101	Watabung HC	108	26	54	16.06.21	1	1	0	0	KBK	15 mins by Road
		Ongobilamo	83	66	Watabung HC	140	36	69	16.06.21	1	1	0	0	KBK	Road/Trek
		Liofiyalo	173	101	Watabung HC	73	16	38	16.06.21	1	1	1	3	KBK	Road/Trek
		Ofolandimato	192	81	Watabung HC	121	23	59	16.06.21	1	1	1	0	KBK	Road/Trek
		Konpalai	62	70	Watabung HC	92	25	45	16.06.21	1	1	0	0	KBK	Road/Trek
		Morofandi	139	91	Watabung HC	97	23	47	16.06.21	1	1	0	2	NBC EHP	Road/Trek
		Wamba	100	201	Watabung HC	119	27	60	16.06.21	1	0	0	0	KBK	Road/Trek
		Koiyofanoro		NEW	Watabung HC	64	13	32	16.06.21	1	1	0	3	KBK	
		Kurefu		NEW	Watabung HC	106	30	54	16.06.21	1	1	0	3	KBK	Road/ Trek
7	Mando/Yamaiufa		4,453	4,446		4,492	1,137	2,364		32	32	32	746		
		Gobia	498	458	Asaro HC	408	98	212	12.06.21	1	1	1	93	NBC	Road
		Humita	229	461	Asaro HC	351	77	180	12.06.21	1	1	1	73	NBC	Road
		Mita	227	287	Asaro HC	246	55	129	12.06.21	1	1	1	47	NBC	Road
		Hanipauka	171	173	Asaro HC	142	23	69	12.06.21	1	1	1	18	NBC	Road
		Houka	190	146	Asaro HC	103	41	63	12.06.21	1	1	1	40	NBC	Road
		Gahumu	121	98	Asaro HC	112	35	57	12.06.21	1	1	1	21	NBC	Road
		Gewoya	123	147	Asaro HC	63	25	42	12.06.21	1	1	1	3	NBC	Road
		Vivizeta	85	220	Asaro HC	55	13	26	12.06.21	1	1	1	10	NBC	Road
		Getuhalaka	81	204	Asaro HC	159	50	79	12.06.21	1	1	1	47	NBC	Road
		Apanuka	114	79	Asaro HC	148	37	73	12.06.21	1	1	1	30	NBC	Road
		Yamaiyo	35	89	Asaro HC	86	23	42	12.06.21	1	1	1	18	NBC	Road
		Hiyoveto	63	73	Asaro HC	75	14	37	12.06.21	1	1	1	5	NBC	Road
		Kobiriyaritoka	133	92	Asaro HC	165	35	77	12.06.21	1	1	1	22	NBC	Road
		Kurubuhuto	177	132	Asaro HC	126	29	68	12.06.21	1	1	1	12	NBC	Road
		Makoga	50	24	Asaro HC	178	45	95	12.06.21	1	1	1	38	NBC	Road
		Monuka	169	137	Asaro HC	143	36	75	12.06.21	1	1	1	16	NBC	Road
		New Kenedi	65	57	Asaro HC	61	27	37	12.06.21	1	1	1	0	NBC	Road
		Siabiami Noro	46	89	Asaro HC	120	32	67	12.06.21	1	1	1	17	NBC	Road
		Golalo	90	74	Asaro HC	157	33	80	13.06.21	1	1	1	19	NBC	Road
		Kiamuga	167	188	Asaro HC	199	50	104	11.06.21	1	1	1	30	NBC	Road
		New Camp	192	76	Asaro HC	83	23	46	11.06.21	1	1	1	17	NBC	Road
		Kahametoka	102	84	Asaro HC	157	50	85	12.06.21	1	1	1	15	NBC	Road
		Lionumudo	75	144	Asaro HC	76	23	39	11.06.21	1	1	1	7	NBC	Road
		Mabanualaka	142	0	Asaro HC	121	41	64	12.06.21	1	1	1	18	NBC	Road
		Hinanubaro	194	77	Asaro HC	132	32	68	11.06.21	1	1	1	20	NBC	Road
		Gomohea	223	175	Asaro HC	61	21	36	11.06.21	1	1	1	23	NBC	Road
		Onguka	142	118	Asaro HC	123	38	66	11.06.21	1	1	1	28	NBC	Road
		Runanoku	135	68	Asaro HC	44	13	25	11.06.21	1	1	1	1	NBC	Road
		Giripon Goraro	131	177	Asaro HC	111	35	65	12.06.21	1	1	1	24	NBC	Road
		Liuka	137	142	Asaro HC	153	24	82	12.06.21	1	1	1	6	NBC	Road
		Gamuka	106	111	Asaro HC	292	50	152	12.06.21	1	1	1	26	NBC	Road
		Yamaiufa Community School	37	47	Asaro HC	42	9	24	11.06.21	1	1	1	2	NBC	Road
8	Korepa		3,312	2,464		3,469	739	1,792		11	11	11	563		
		Gimiyufa	273	197	Asaro HC	206	50	107	10.06.21	1	1	1	25	NBC	Road/Trek
		Gindiniwafo	196	361	Asaro HC	148	33	74	10.06.21	1	1	1	42	NBC	Road/Trek
		Gumo	269	149	Asaro HC	168	50	91	10.06.21	1	1	1	44	NBC	Road/Trek
		Lafaufa	525	249	Asaro HC	323	50	162	10.06.21	1	1	1	36	NBC	Road/Trek
		Lolu	252	246	Asaro HC	349	50	173	10.06.21	1	1	1	31	NBC	Road/Trek
		Rowandi	285	160	Asaro HC	239	50	132	10.06.21	1	1	1	46	NBC	Road/Trek
		Lumufalavoko	341	259	Asaro HC	394	82	194	10.06.21	1	1	1	62	NBC	Road/Trek
		Gorehuka	317	354	Asaro HC	611	131	327	10.06.21	1	1	1	97	NBC	Road/Trek
		Daulo Top	600	154	Asaro HC	101	27	54	10.06.21	1	1	1	21	NBC	Road/Trek
		Kesaigu	252	142	Asaro HC	730	166	376	10.06.21	1	1	1	116	NBC	Road/Trek
		Negeha		192	Asaro HC	200	50	102	10.06.21	1	1	1	43	NBC	Road/Trek
9	Asaro No. 1		4,837	4,189		4,202	993	2,113		23	23	23	688		
		Genetisarobe	369	285	Asaro HC	444	100	224	13.06.21	1	1	1	56	NBC	Road
		Wato Kesato & Aketaka/Kororo	685	326	Asaro HC	354	100	165	13.06.21	1	1	1	48	NBC	Road
		Korekoreto	402	182	Asaro HC	183	45	95	13.06.21	1	1	1	25	NBC	Road
		Akisaroka	348	171	Asaro HC	220	41	111	13.06.21	1	1	1	22	NBC	Road
		Geminoina	208	135	Asaro HC	81	20	44	13.06.21	1	1	1	29	NBC	Road
		Kosayufa No 2	304	329	Asaro HC	462	84	226	13.06.21	1	1	1	40	NBC	Road
		Obiaka	181	213	Asaro HC	68	26	37	13.06.21	1	1	1	56	NBC	Road
		Seisero	104	158	Asaro HC	146	34	73	13.06.21	1	1	1	19	NBC	Road
		Hiteka	112	117	Asaro HC	204	49	103	13.06.21	1	1	1	36	NBC	Road
		Gurupoka	131	102	Asaro HC	118	28	63	13.06.21	1	1	1	19	NBC	Road
		Zontuh	83	252	Asaro HC	365	86	180	13.06.21	1	1	1	55	NBC	Road
		Omega	292	226	Asaro HC	167	50	92	13.06.21	1	1	1	41	NBC	Road
		Makhiku	317	335	Asaro HC	141	50	79	13.06.21	1	1	1	42	NBC	Road
		Binanumuto	108	106	Asaro HC	107	22	51	15.06.21	1	1	1	13	NBC	Road
		Vereto	98	77	Asaro HC	80	16	40	13.06.21	1	1	1	13	NBC	Road
		Eketameku	106	74	Asaro HC	140	26	71	13.06.21	1	1	1	25	NBC	Road
		Samatoka	250	273	Asaro HC	355	79	167	13.06.21	1	1	1	44	NBC	Road
		Latemekuka	125	121	Asaro HC	61	13	31	13.06.21	1	1	1	9	NBC	Road
		Nipiamoka	38	97	Asaro HC	32	8	17	13.06.21	1	1	1	7	NBC	Road
		Samanuka	152	185	Asaro HC	175	38	88	13.06.21	1	1	1	28	NBC	Road
		Luhiyakuka	89	131	Asaro HC	57	15	27	13.06.21	1	1	1	5	NBC	Road
		Asaro Llg Hq	54	85	Asaro HC	93	13	47	13.06.21	1	1	1	12	NBC	Road
		Obiaka Plantation	281	210	Asaro HC	149	50	82	13.06.21	1	1	1	44	NBC	Road
10	Asaro No. 2		6,906	8,252		6,570	1,483	3,379		53	48	48	894		

LLG	WARD	VILLAGE	Estimated 2021 Population Based On 2000 Census	Estimated 2021 Population Based On 2018	Health Centre	Population Surveyed	House Holds Surveyed	Nets Issued	Date Of Distribution	Villages	Digicel	Bmoblie	Houses With Radios	Radio Networks	Comments
		Yopoka	50	119	Asaro HC	108	22	55	17.06.21	1	1	1	15	NBC	Road
		Silimugoralo	146	167	Asaro HC	126	34	70	17.06.21	1	1	1	30	NBC	Road
		Rembina	281	346	Asaro HC	299	56	150	17.06.21	1	1	1	32	NBC	Road
		Gimiyuha	233	67	Asaro HC	116	31	60	17.06.21	1	1	1	18	NBC	Road
		Kempeni	291	0	Asaro HC					1					Covered under Kwongi Hc
		Pimoiga	117	140	Asaro HC	136	41	75	17.06.21	1	1	1	10	NBC	Road
		Mapirinosau	79	101	Asaro HC	91	20	43	17.06.21	1	1	1	0	NBC	Road
		Angia	48	54	Asaro HC	61	17	30	17.06.21	1	1	1	14	NBC	Road
		Eres	58	144	Asaro HC	92	19	45	17.06.21	1	1	1	13	NBC	Road
		Gaharehenda	106	70	Asaro HC	99	24	53	17.06.21	1	1	1	8	NBC	Road
		Gembaro	54	38	Asaro HC	96	23	47	17.06.21	1	1	1	15	NBC	Road
		Garanaro	77	181	Asaro HC	65	19	35	17.06.21	1	1	1	3	NBC	Road
		Generuveka	198	239	Asaro HC	152	19	75	17.06.21	1	1	1	14	NBC	Road
		Geparoka	148	325	Asaro HC					1					Covered Under Generuveka wd 10
		Geremiaka	229	393	Asaro HC	225	67	126	17.06.21	1	1	1	49	NBC	Road
		Getoruka	81	143	Asaro HC	58	13	32	17.06.21	1	1	1	10	NBC	Road
		Gimuka	79	87	Asaro HC	139	30	68	17.06.21	1	1	1	10	NBC	Road
		Guhinoso	77	97	Asaro HC	50	21	27	17.06.21	1	1	1	11	NBC	Road
		Gorarosawaro	117	131	Asaro HC	118	22	56	17.06.21	1	1	1	14	NBC	Road
		Gunangi	142	106	Asaro HC	89	18	48	17.06.21	1	1	1	16	NBC	Road
		Kapiruka	58	126	Asaro HC	109	24	54	17.06.21	1	1	1	8	NBC	Road
		Murito	44	53	Asaro HC	75	14	41	17.06.21	1	1	1	9	NBC	Road
		Nipuka	235	159	Asaro HC	134	29	69	17.06.21	1	1	1	19	NBC	Road
		Siharo	475	156	Asaro HC	258	50	127	17.06.21	1	1	1	39	NBC	Road
		Simigoraro	38	162	Asaro HC	161	34	80	17.06.21	1	1	1	11	NBC	Road
		Tupauisa	87	146	Asaro HC	72	23	37	17.06.21	1	1	1	11	NBC	Road
		Usioto	169	162	Asaro HC	118	27	58	17.06.21	1	1	1	17	NBC	Road
		Wonuwonuku	83	77	Asaro HC	113	27	57	17.06.21	1	1	1	17	NBC	Road
		Yaowaka	219	450	Asaro HC					1				NBC	Covered Under Yaowaka wd 10
		Roheka	233	269	Asaro HC	224	50	120	17.06.21	1	1	1	29	NBC	Road
		Hagereto	129	121	Asaro HC	157	44	87	17.06.21	1	1	1	36	NBC	Road
		Hanumumuka	221	213	Asaro HC	221	50	117	17.06.21	1	1	1	44	NBC	Road
		Matatalai	142	169	Asaro HC	146	50	85	17.06.21	1	1	1	25	NBC	Road
		Yasegolalo	152	140	Asaro HC	89	21	45	17.06.21	1	1	1	12	NBC	Road
		Luluwauka	79	218	Asaro HC	93	25	49	17.06.21	1	1	1	20	NBC	Road
		Gotepeukai	83	136	Asaro HC	82	27	43	17.06.21	1	1	1	9	NBC	Road
		Ahoka	123	167	Asaro HC	118	23	58	17.06.21	1	1	1	10	NBC	Road
		Gutulo	81	68	Asaro HC	39	9	21	17.06.21	1	1	1	4	NBC	Road
		Isametoka	106	54	Asaro HC	72	13	36	17.06.21	1	1	1	9	NBC	Road
		Ikisauka	58	157	Asaro HC	135	36	72	17.06.21	1	1	1	28	NBC	Road
		Ketuharo	81	135	Asaro HC	127	50	75	17.06.21	1	1	1	43	NBC	Road
		Kofinumuku	200	124	Asaro HC	159	27	83	17.06.21	1	1	1	19	NBC	Road
		Lapanosa	125	142	Asaro HC	133	30	66	17.06.21	1	1	1	6	NBC	Road
		Lisaku	90	77	Asaro HC	151	31	76	17.06.21	1	1	1	17	NBC	Road
		Maheyaga	117	187	Asaro HC	130	15	61	17.06.21	1	1	1		NBC	Road
		Mambu Block	44	96	Asaro HC	64	15	34	17.06.21	1	1	1	10	NBC	Road
		Pins Block	40	300	Asaro HC	83	13	45	17.06.21	1	1	1	6	NBC	Road
		Sapsap	73	96	Asaro HC	120	23	60	17.06.21	1	1	1	17	NBC	Road
		Asaro Primary School	46	376	Asaro HC	299	72	153	17.06.21	1	1	1	44	NBC	Road
		Asaro High School	325	319	Asaro HC	431	71	213	17.06.21	1	1	1	63	NBC	Road
		Asaro Police		140	Asaro HC	147	20	70	17.06.21	1	1	1	18	NBC	Road
		Asaro Station	302	46	Asaro HC	126	29	60	17.06.21	1				NBC	Road
		Gire Pltn	35	65	Asaro HC	64	15	32	17.06.21	1	1	1	12	NBC	Road
11		Tafeto/Wantrifu	2,355	2,073		1,847	450	981		7	6	6	213		
		Igisowe	533	550	Asaro HC	555	100	286	14.06.21	1	1	1	66	NBC	Road
		Kem	352	332	Asaro HC	329	94	177	14.06.21	1	1	1	33	NBC	Road
		Anawaiyufu	423	408	Asaro HC	413	117	220	14.06.21	1	1	1	51	NBC	Road
		Nijay		0	Asaro HC									NBC	Under ward 13
		Warawesan	433	214	Asaro HC	109	29	62	14.06.21	1	1	1	6	NBC	Road
		Wara Bewa	137	193	Asaro HC					1				NBC	Covered Under simigoraro wd 10
		Menihero	341	268	Asaro HC	339	95	184	14.06.21	1	1	1	42	NBC	Road
		Tafeto Station	137	108	Asaro HC	102	15	52	14.06.21	1	1	1	15	NBC	Road
12		Kasena/Lunumbe	2,630	3,922		3,586	997	1,916		12	12	12	534		
		Gizehonda	44	177	Asaro HC	201	50	100	13.06.21	1	1	1	31	NBC	Road
		Nahoma 2	341	622	Asaro HC	483	150	267	13.06.21	1	1	1	87	NBC	Road
		Nahoma 3	231	484	Asaro HC	370	100	203	13.06.21	1	1	1	58	NBC	Road
		Samonga	81	186	Asaro HC	194	50	102	13.06.21	1	1	1	22	NBC	Road
		Gauakuka	63	179	Asaro HC	220	50	109	13.06.21	1	1	1	27	NBC	Road
		Ambiliseyufu	302	196	Asaro HC	314	76	169	13.06.21	1	1	1	26	NBC	Road
		Noliligeto	85	166	Asaro HC	222	50	116	13.06.21	1	1	1	22	NBC	Road
		Garanaro	171	492	Asaro HC	319	100	172	13.06.21	1	1	1	48	NBC	Road
		Gohingeyuho	183	408	Asaro HC	358	100	190	13.06.21	1	1	1	79	NBC	Road
		Gambriseyuhu	464	477	Asaro HC	448	136	245	13.06.21	1	1	1	80	NBC	Road
		Roka Plantation	666	328	Asaro HC	260	85	141	13.06.21	1	1	1	36	NBC	Road
		Kuk		208	Asaro HC	197	50	102	13.06.21	1	1	1	18	NBC	Road
13		Ongudone	3,475	5,078		4,907	1,429	2,722		11	11	11	793		
		Ongupone	587	676	Asaro HC	765	236	443	11.06.21	1	1	1	97	NBC	Road
		Aparoata	366	356	Asaro HC	516	147	280	13.06.21	1	1	1	107	NBC	Road
		Kenemba	818	1,020	Asaro HC	1,068	300	577	13.06.21	1	1	1	161	NBC	Road
		Kori	254	380	Asaro HC	301	96	168	11.06.21	1	1	1	59	NBC	Road

LLG	WARD	VILLAGE	Estimated 2021 Population Based On 2000 Census	Estimated 2021 Population Based On 2018	Health Centre	Population Surveyed	House Holds Surveyed	Nets Issued	Date Of Distribution	Villages	Digicel	Bmoble	Houses With Radios	Radio Networks	Comments
		Openga	673	862	Asaro HC	400	150	244	11.06.21	1	1	1	58	NBC	Road
		Alanduka	398	447	Asaro HC	493	100	253	11.06.21	1	1	1	46	NBC	Road
		Gereku	350	380	Asaro HC	335	100	183	11.06.21	1	1	1	78	NBC	Road
		Kasena Primary School	29	176	Asaro HC	172	50	98	11.06.21	1	1	1	36	NBC	Road
		Wahuto		267	Asaro HC	233	50	119	11.06.21	1	1	1	20	NBC	Road
		Nijay		348	Asaro HC	375	150	229	11.06.21	1	1	1	91	NBC	Road
		Kofiro		165	Asaro HC	249	50	128	11.06.21	1	1	1	40	NBC	Road
14	Anengu		2,734	2,283		1,829	572	1,001		8	8	8	221		
		Asariyufas No. 1	902	514	Asaro HC	273	80	148	12.06.21	1	1	1	42	NBC	Road
		Asariyufasi No. 2	545	504	Asaro HC	222	75	120	12.06.21	1	1	1	15	NBC	Road
		Kefeyufo	502	404	Asaro HC	343	126	197	12.06.21	1	1	1	56	NBC	Road
		Kofenayufa	258	0	Asaro HC	162	46	81	12.06.21	1	1	1	9	NBC	Road
		Kombopari	117	173	Asaro HC	149	50	83	12.06.21	1	1	1	13	NBC	Road
		Messiufa	154	235	Asaro HC	117	31	65	12.06.21	1	1	1	13	NBC	Road
		Monive	235	253	Asaro HC	215	58	117	12.06.21	1	1	1	28	NBC	Road
		Gufia	21	199	Asaro HC	348	106	190	12.06.21	1	1	1	45	NBC	Road
15	Kanosa		964	2,094		2,423	535	1,234		4	4	4	223		
		Foindiwei	560	818	Asaro HC	1,060	200	534	12.06.21	1	1	1	101	NBC	Road/Trek
		Kofoxuf	173	0	Asaro HC	501	100	244	12.06.21	1	1	1	16	NBC	Road/Trek
		Asaroyufa	231	196	Asaro HC	280	85	162	12.06.21	1	1	1	44	NBC	Road/Trek
		Kuka		1,080	Asaro HC	582	150	294	12.06.21	1	1	1	62	NBC	Road/Trek
16	Kofena		1,145	1,689		1,460	390	765		7	7	7	127		
		Kanbosoukave	275	213	Asaro HC	128	40	73	18.06.21	1	1	1		NBC	Road/Trek
		Lambega	81	226	Asaro HC	167	50	90	18.06.21	1	1	1	24	NBC	Road/Trek
		Kafuka	129	243	Asaro HC	176	50	93	18.06.21	1	1	1	21	NBC	Road/Trek
		Gehagukambi 1	267	217	Asaro HC	216	50	110	18.06.21	1	1	1	32	NBC	Road/Trek
		Gehagukambi 2	102	222	Asaro HC	173	50	93	18.06.21	1	1	1	17	NBC	Road/Trek
		Kofoyofo	258	279	Asaro HC	342	100	189	18.06.21	1	1	1	20	NBC	Road/Trek
		Kofena Community School	33	289	Asaro HC	258	50	117	18.06.21	1	1	1	13	NBC	Road/Trek
17	Kombiangu/Amaiufa		2,500	2,803		1,454	366	729		4	4	2	88		
		Amaiyufa No 1	300	832	Kwongi HC	248	56	117	16.06.21	1	1	0	0	FM 93	Road
		Amaiyufa No 2	702	564	Kwongi HC	410	150	210	16.06.21	1	1	0	0	FM 93	Road
		Konobuda	697	644	Asaro HC	88	30	49	20.06.21	1	1	1	4	NBC	Road/Trek
		Kambiagwe	800	763	Asaro HC	708	130	353	20.06.21	1	1	1	84	NBC	Road/Trek
18	Namta		3,092	2,818		2,143	553	1,108		8	8	8	295		
		Kirifuma	439	334	Asaro HC	430	100	221	16.06.21	1	1	1	19	NBC	Road/Trek
		Komuni	554	352	Asaro HC	373	75	185	16.06.21	1	1	1	59	NBC	Road/Trek
		Ronggoko	450	443	Asaro HC	139	39	65	16.06.21	1	1	1	38	NBC	Road/Trek
		Mefenga	693	561	Asaro HC	321	86	159	16.06.21	1	1	1	45	NBC	Road/Trek
		Uraimo	150	280	Asaro HC	344	100	187	16.06.21	1	1	1	41	NBC	Road/Trek
		Kauma	772	849	Asaro HC	191	53	110	16.06.21	1	1	1	40	NBC	Road/Trek
		Namta Primary School	35	0	Asaro HC	183	50	93	16.06.21	1	1	1	39	NBC	Road/Trek
		Kempeni		0	Asaro HC	162	50	88	16.06.21	1	1	1	14	NBC	Road/Trek
19	Pikosa		1,868	928		571	108	273		5	5	5	58		
		Kafandeyufa	385	173	Asaro HC	293	50	135	17.06.21	1	1	1	24	NBC	Road/Trek
		Komoboyufa	431	295	Asaro HC	120	24	62	17.06.21	1	1	1	17	NBC	Road/Trek
		Orufeyufo	446	0	Asaro HC					1	1	1			Non Existant
		Ninoreve	446	0	Asaro HC	126	27	60	17.06.21	1	1	1	10	NBC	Road/Trek
		Lonofuguwe	160	461	Asaro HC	32	7	16	17.06.21	1	1	1	7	NBC	Road/Trek
20	Anaguyufa		2,140	1,784		1,969	467	955		10	10	0	0		
		Gemdega	192	102	Kwongi HC	218	53	110	10.06.21	1	1	0	0		2Days trek
		Mononga	229	135	Kwongi HC	177	43	89	13.06.21	1	1	0	0	FM 93	Road
		Kombopari	217	162	Kwongi HC										Same village in Ward 14
		Foku	371	454	Kwongi HC	408	98	195	13.06.21	1	1	0	0	FM 93	Road/Trek
		Kofeau	237	196	Kwongi HC	160	35	77	13.06.21	1	1	0	0	FM 93	Road/Trek
		Wazemora	79	210	Kwongi HC	104	34	53	13.06.21	1	1	0	0	FM 93	Road/Trek
		Remesero	358	167	Kwongi HC	226	50	113	13.06.21	1	1	0	0	FM 93	Road/Trek
		Nimbija/Kofunero	250	190	Kwongi HC	175	36	80	13.06.21	1	1	0	0	FM 93	Road/Trek
		Uvoku	206	168	Kwongi HC	229	45	108	13.06.21	1	1	0	0	FM 93	Road/Trek
		Las Namta		NEW	Kwongi HC	67	15	31	13.06.21	1	1	0	0	FM 93	Road/Trek
		Kwongi #1 Village		NEW	Kwongi HC	205	58	99	13.06.21	1	1	0	0	FM 93	Road
21	Kwongi No. 1		2,099	1,268		1,491	451	743		16	16	0	0		
		Marzowe	158	108	Kwongi HC	147	50	79	14.06.21	1	1	0	0	FM 93	Road
		Duku	58	0	Kwongi HC	111	33	58	14.06.21	1	1	0	0	FM 93	Road
		Amaguku	140	104	Kwongi HC	103	34	53	14.06.21	1	1	0	0	FM 93	Road
		Gurukuwe	154	106	Kwongi HC	169	50	81	14.06.21	1	1	0	0	FM 93	Road
		Amboku	58	0	Kwongi HC	39	19	21	14.06.21	1	1	0	0	FM 93	Road
		Sikinumuga	183	155	Kwongi HC	133	50	66	14.06.21	1	1	0	0	FM 93	Road
		Sigamu	69	121	Kwongi HC	53	15	25	14.06.21	1	1	0	0	FM 93	Road
		Roka	314	0	Kwongi HC	154	32	74	14.06.21	1	1	0	0	FM 93	Road
		Gumunoku	148	0	Kwongi HC	86	24	42	14.06.21	1	1	0	0	FM 93	Road
		Kofinga	98	121	Kwongi HC	59	17	30	14.06.21	1	1	0	0	FM 93	Road
		Gumini	154	178	Kwongi HC	192	50	93	14.06.21	1	1	0	0	FM 93	Road
		Livisero	81	0	Kwongi HC	10	6	6	14.06.21	1	1	0	0	FM 93	Road
		Marunoso	179	164	Kwongi HC	125	34	60	14.06.21	1	1	0	0	FM 93	Road
		Siviku	92	0	Kwongi HC	19	8	11	14.06.21	1	1	0	0	FM 93	Road
		Morora	89	0	Kwongi HC	21	8	10	14.06.21	1	1	0	0	FM 93	Road
		Lohonga	125	212	Kwongi HC	70	21	34	14.06.21	1	1	0	0	FM 93	Road
22	Kwongi No 2		2,145	2,437		6,685	1,761	3,208		18	16	0	0		
		Kofinge	287	220	Kwongi HC	222	48	107	15.06.21	1	1	0	0	FM 93	Road
		Gohini	296	163	Kwongi HC					1					Included Under Kofinge
		Mohonga	485	363	Kwongi HC	373	92	176	15.06.21	1	1	0	0	FM 93	Road

LLG	WARD	VILLAGE	Estimated 2021 Population Based On 2000 Census	Estimated 2021 Population Based On 2018	Health Centre	Population Surveyed	House Holds Surveyed	Nets Issued	Date Of Distribution	Villages	Digicel	Bmobile	Houses With Radios	Radio Networks	Comments
		Lununozi	94	100	Kwongi HC					1					Included Under Mohonga
		Foina	223	165	Kwongi HC	233	93	129	15.06.21	1	1	0	0	FM 93	Road
		Nokondi	67	189	Kwongi HC	152	38	71	15.06.21	1	1	0	0	FM 93	Road
		Mesiyufa	316	300	Kwongi HC	391	100	185	15.06.21	1	1	0	0	FM 93	Road
		Veretove	316	232	Kwongi HC	233	50	112	15.06.21	1	1	0	0	FM 93	Road
		Kwongi Clinic	62	144	Kwongi HC	68	16	31	15.06.21	1	1	0	0	FM 93	Road
		Sihereni		203	Kwongi HC	204	50	98	15.06.21	1	1	0	0	FM 93	Road
		Gulgul		153	Kwongi HC	176	50	85	15.06.21	1	1	0	0	FM 93	Road
		Gaha		206	Kwongi HC	374	100	183	15.06.21	1	1	0	0	FM 93	Road
		Rindima		NEW	Kwongi HC	632	150	305	16.06.21	1	1	0	0	FM 93	Road
		Ovia		NEW	Kwongi HC	745	238	363	16.06.21	1	1	0	0	FM 93	Road
		Nomba		NEW	Kwongi HC	332	84	151	16.06.21	1	1	0	0	FM 93	Road
		Last Pikhosa		NEW	Kwongi HC	570	132	264	16.06.21	1	1	0	0	FM 93	Road
		Miruma		NEW	Kwongi HC	1,347	330	646	16.06.21	1	1	0	0	FM 93	Road
		Namta # 02		NEW	Kwongi HC	633	190	302	16.06.21	1	1	0	0	FM 93	Road

ANNEX TWO

EASTERN HIGHLANDS PROVINCE
KAINANTU DISTRICT POPULATION 2021
LLIN DISTRIBUTION SUMMARY SHEET

	Areas near 2000m
	Areas 1600-2000m
	Areas 1200-1600m

LLG	WARD	VILLAGE	Estimated 2021 Population Based On 2000 Census	Estimated 2021 Population Based On 2018	Health Centre	Population Surveyed	House Holds Surveyed	Nets Issued	Date Of Distribution	Villages	Digicel	Emobile	Houses With Radios	Radio Networks	Comments
KAINANTU DISTRICT			179,659	179,659		183,369	37,968	90,773			390	348	50	5,853	321
Kainantu Rural			166,370	168,036		167,848	35,332	83,015		347	301	47	5,278	274	
1	Sohe		4,820	4,432		2,349	601	1,157		10	8	0	0		
		Tonotogona	231	201	Onamuga HC	169	50	83	19.06.21	1	1	0		FM/KBK	Road
		Kamanagona	237	137	Onamuga HC										Non Existant
		Agunanofi (Hintekrufi)	899	880	Onamuga HC	558	130	275	19.06.21	1	0	0		FM/KBK	Road
		Fugran Ka (Agunanofi)	1,257	629	Onamuga HC	328	113	167	19.06.21	1	1	0		FM/KBK	Road
		Tafesa	139	260	Onamuga HC										Non Existant
		Fonamungka	204	90	Onamuga HC										Non Existant
		Yarofo No 1	168	464	Onamuga HC	162	27	73	21.06.21	1	1	0		FM/KBK	Road
		Yarofo No 2	241	168	Onamuga HC	196	50	98	21.06.21	1	1	0		FM/KBK	Road
		Reviso	117	223	Onamuga HC	107	31	58	19.06.21	1	1	0		FM/KBK	Road
		Agazonefingka	139	111	Onamuga HC	241	50	117	19.06.21	1	0	0		FM/KBK	Road
		Fugranka	102	90	Onamuga HC										Non Existant
		Tihane	198	200	Onamuga HC	168	50	87	19.06.21	1	1	0		FM/KBK	Road
		Keso	270	210	Onamuga HC	165	50	82	19.06.21	1	1	0		FM/KBK	Road
		Mokona	392	568	Onamuga HC										Non Existant
		Kamanare	227	199	Onamuga HC	255	50	117	19.06.21	1	1	0		FM/KBK	Road
2	Usarufa		3,539	3,541		3,596	920	1,851		7	7	0	0		
		Agura No 1	290	277	Onamuga HC	194	57	101	17.06.21	1	1	0		FM/KBK	Road
		Kosena	1,975	1,788	Onamuga HC	1,487	300	720	17.06.21	1	1	0		FM/KBK	Road
		Kagu	464	455	Onamuga HC	503	150	263	17.06.21	1	1	0		FM/KBK	Road
		Moife	529	629	Onamuga HC	537	145	291	17.06.21	1	1	0		FM/KBK	Road
		Irafo 1		NEW	Onamuga HC	340	100	178	17.06.21	1	1	0		FM/KBK	Road
		Irafo 2		NEW	Onamuga HC	251	86	143	17.06.21	1	1	0		FM/KBK	Road
		Agura No 2	282	392	Onamuga HC	284	82	155	17.06.21	1	1	0		FM/KBK	Road/Trek
3	Garufi/Tafesa		2,439	2,848		3,208	832	1,593		6	5	1	0		
		Ayumana	319	257	Onamuga HC	277	114	146	25.06.21	1	1	0		FM/KBK	Road
		Katiporo	762	690	Onamuga HC	535	150	272	23.06.21	1	1	0		FM/KBK	Road/Trek
		Krufi	679	1,179	Onamuga HC	672	160	336	23.06.21	1	1	0		FM/KBK	Road
		Tirute		NEW	Onamuga HC	93	23	46	25.06.21	1	0	0		FM/KBK	Road/Trek
		Yababi	679	339	Onamuga HC	797	199	382	19.06.21	1	1	0		FM/KBK	Road
		Fomu No 1		382	Onamuga HC	834	186	411	24.06.21	1	1	1		FM/KBK	Road
4	Evevinonta		7,476	6,656		5,881	1,554	2,960		11	8	1	0		
		Benega	372	463	Onamuga HC	430	100	213	25.06.21	1	1	0		FM/KBK	Road
		Nasenanka	452	365	Onamuga HC	472	100	228	26.06.21	1	1	1		FM/KBK	Road/Trek
		Biteve	1,259	1,163	Onamuga HC	1,096	237	525	19.06.21	1	1	0		KBK	Road/Trek
		Musave	556	602	Onamuga HC	456	87	210	19.06.21	1	1	0		KBK	Road
		Fomu No 2	1,267	805	Onamuga HC	760	193	376	20.06.21	1	0	0		KBK	Road
		Joginofi	397	162	Onamuga HC	210	98	121	20.06.21	1	1	0		FM/KBK	Road
		Tatau	554	414	Onamuga HC	333	99	171	20.06.21	1	1	0		FM/KBK	Road
		Keketuka	607	656	Onamuga HC	176	44	83	19.06.21	1	1	0	0	FM/KBK	Road
		Kasesompa	421	0	Onamuga HC										Non Existant
		Krufaga	597	0	Onamuga HC										Non Existant
		Amegempaka	345	126	Onamuga HC										Non Existant
		Izuza	102	109	Onamuga HC										Non Existant
		Unanofi	548	552	Onamuga HC	555	150	281	20.06.21	1	0	0		KBK	Road
		Tibunofi		388	Onamuga HC	376	117	193	20.06.21	1	0	0		FM/KBK	Road
		Fanganofi	0	0	Onamuga HC										Non Existant
		Sonofi		852	Onamuga HC	1,017	329	559	19.06.21	1	1	0		FM/KBK	Road
5	Anumaga		4,785	4,132		2,735	787	1,393		9	4	0	0		
		Apinega	1,245	958	Onamuga HC	866	275	444	24.06.21	1	0	0		FM/KBK	Road
		Mumboi	114	226	Onamuga HC	277	100	153	25.06.21	1	1	0		FM/KBK	Road
		Konka	566	387	Onamuga HC	159	48	84	25.06.21	1	1	0		FM/KBK	Road
		Ozaunka	108	124	Onamuga HC	389	100	191	24.06.21	1	0	0		FM/KBK	Road
		Tugefataga	116	318	Onamuga HC	169	50	89	25.06.221	1	0	0		FM/KBK	Road
		Mona	360	209	Onamuga HC					1					Non Existant
		Sisimega	388	412	Onamuga HC	714	181	348	23.06.21	1	1	0		FM/KBK	Road
		Ontenu	1,778	1,300	Onamuga HC					1					Included Under Apinega
		Onamuga Station	112	197	Onamuga HC	161	33	84	23.06.21	1	1	0		FM/KBK	Road
6	Yamaso		2,101	1,707		1,948	466	892		4	1	0	0		
		Ataiya No 1	856	280	Onamuga HC	443	116	228	21.06.21	1	1	0		FM/KBK	Road
		Ataiya No 2	258	241	Onamuga HC	290	50	135	21.06.21	1	0	0		FM/KBK	Road
		Oyana No 1	327	579	Onamuga HC	623	150	286	24.06.21	1	0	0		FM/KBK	Road
		Oyana No 2	660	607	Onamuga HC	592	150	243	24.06.21	1	0	0		FM/KBK	Road
7	Onampinka		5,799	7,515		8,506	1,774	4,184		13	13	0	54		
		Famo	973	1,080	Kainantu HC	1,282	206	627	16.06.21	1	1	0		NBC	Road
		Bobonave	390	415	Kainantu HC	276	50	136	16.06.21	1	1	0	10	NBC	Road
		Karufinave	644	720	Kainantu HC	535	111	268	16.06.21	1	1	0		NBC	Road
		Namura	1,128	1,300	Kainantu HC	1,556	400	695	16.06.21	1	1	0		NBC	Road
		Taranofi No 1	468	874	Kainantu HC	593	180	314	16.06.21	1	1	0		NBC	Road
		Yabunka	425	1,010	Kainantu HC	965	182	473	16.06.21	1	1	0		NBC	Road
		Yasi	464	475	Kainantu HC	604	100	300	20.06.21	1	1	0		NBC	Road
		Hagunamura	709	740	Kainantu HC	845	167	446	16.06.21	1	1	0	39	NBC	Road
		Taranofi No 3	386	457	Kainantu HC	402	81	199	16.06.21	1	1	0		NBC	Road
		Taranofi No 2	213	275	Kainantu HC	276	49	139	16.06.21	1	1	0		NBC	Road
		Tonnaka		NEW	Kainantu HC	70	21	41	26.06.21	1	1	0	2	NBC	Road
		Yanabo		NEW	Kainantu HC	929	199	463	16.06.21	1	1	0		NBC	Road

LLG	WARD	VILLAGE	Estimated 2021 Population Based On 2000 Census	Estimated 2021 Population Based On 2018	Health Centre	Population Surveyed	House Holds Surveyed	Nets Issued	Date Of Distribution	Villages	Digicel	Emobile	Houses With Radios	Radio Networks	Comments
		Onerunga High School		168	Kainantu HC	173	28	83	17.06.21	1	1	0	3	NBC	Road
8	Eba		7,729	8,793		8,105	1,502	4,062		27	27	0	65		
		Amunanofi	1,036	0	Kainantu HC					1	1	0		NBC	Abandoned-Tribal Fights
		Bayai	417	342	Kainantu HC	218	37	113	20.06.21	1	1	0	0	NBC	Road
		Ife	771	262	Kainantu HC	273	50	136	17.06.21	1	1	0		NBC	Road
		Kanamba No 1	407	872	Kainantu HC	929	200	473	17.06.21	1	1	0		NBC	Road
		Kumanofi	525	492	Kainantu HC	270	52	135	17.06.21	1	1	0	9	NBC	Road
		Omena 1	472	750	Kainantu HC	393	77	201	16.06.21	1	1	0		NBC	Road
		Onki	376	443	Kainantu HC	453	99	225	18.06.21	1	1	0		NBC	Road
		Orege	675	849	Kainantu HC	611	104	298	19.06.21	1	1	0		NBC	Road
		Jamuja	370	502	Kainantu HC	402	79	205	18.06.21	1	1	0		NBC	Road
		Jomposa	444	480	Kainantu HC	244	50	124	18.06.21	1	1	0		NBC	Road
		Konoka	149	165	Kainantu HC	249	44	127	18.06.21	1	1	0	23	NBC	Road
		Omena 2	615	448	Kainantu HC	171	38	73	17.06.21	1	1	0	0	NBC	Road
		Nagunka	108	0	Kainantu HC	220	50	114	17.06.21	1	1	0		NBC	Road
		Kukunka	311	173	Kainantu HC	219	50	103	18.06.21	1	1	0		NBC	Road
		Avigerigere	102	129	Kainantu HC	213	50	109	18.06.21	1	1	0		NBC	Road
		Fuzunega	247	141	Kainantu HC	228	50	110	18.06.21	1	1	0		NBC	Road
		Kamakun	184	0	Kainantu HC	143	20	72	20.06.21	1	1	0		NBC	Road
		Bininta	442	0	Kainantu HC	319	50	155	16.06.21	1	1	0		NBC	Road
		Yomposa Community School	61	76	Kainantu HC					1	1	0		NBC	Included Under Jomposa
		Ino'onka Community School	18	0	Kainantu HC					1	1	0		NBC	Included Under Ino'onka
		Ino'onka		1,402	Kainantu HC	1,007	159	524	17.06.21	1	1	0	3	NBC	Road
		Umpaka		153	Kainantu HC	213	50	113	17.06.21	1	1	0		NBC	Road
		Azunofi		370	Kainantu HC	197	35	98	16.06.21	1	1	0		NBC	Road
		Barola Primary School		77	Kainantu HC	76	12	38	16.06.21	1	1	0		NBC	Road
		Kolvin		451	Kainantu HC	693	89	337	16.06.21	1	1	0	30	NBC	Road
		Sikas		218	Kainantu HC	143	23	69	17.06.21	1	1	0		NBC	Road
		Mofakenka		0	Kainantu HC	221	34	110	16.06.21	1	1	0		NBC	Road
9	Bush Kamano		9,951	10,282		8,943	1,849	4,492		16	16	0	346		
		Urante Famo	707	1,335	Kainantu HC	844	232	455	18.06.21	1	1	0	1	NBC	Road
		Mokunte		212	Kainantu HC	180	21	90	27.06.21	1	1	0	1	NBC	Road
		Bara-Onofi	912	0	Kainantu HC										Abandoned-Tribal Fights
		Hogu	642	666	Kainantu HC	594	110	287	17.06.21	1	1	0	5	NBC	Road
		Onemoki	838	787	Kainantu HC	651	150	338	17.06.21	1	1	0	49	NBC	Road
		Tirae	859	618	Kainantu HC	710	149	354	18.06.21	1	1	0	11	NBC	Road
		Kagonofi	1,006	1,113	Kainantu HC	1,211	276	619	19.06.21	1	1	0	9	NBC	Road
		Hamori No 2	1,568	1,627	Kainantu HC	1,418	217	714	17.06.21	1	1	0	42	NBC	Road
		Barapa	452	319	Kainantu HC	202	45	99	18.06.21	1	1	0	14	NBC	Road
		Ya Anantu	460	375	Kainantu HC	299	61	149	18.06.21	1	1	0	12	NBC	Road
		Kurina	861	952	Kainantu HC	601	129	303	19.06.21	1	1	0	109	NBC	Road
		Uraioapa	1,087	831	Kainantu HC	892	192	411	18.06.21	1	1	0	5	NBC	Road
		Anafaronka	558	370	Kainantu HC	407	75	204	18.06.21	1	1	0	30	NBC	Road
		Bakoma Primary School		0	Kainantu HC	61	10	32	18.06.21	1	1	0	0	NBC	Road
		Tinompa		589	Kainantu HC	424	90	208	17.06.21	1	1	0	26	NBC	Road
		Trumere		160	Kainantu HC	184	42	92	19.06.21	1	1	0	9	NBC	Road
		Avina		328	Kainantu HC	265	50	137	18.06.21	1	1	0	23	NBC	Road
10	Ramu		7,259	9,994		11,320	2,187	5,631		15	15	0	482		
		Aka'anantu	763	911	Kainantu HC	652	164	334	21.06.21	1	1	0	0	NBC	Road
		Duvampa	895	902	Kainantu HC	967	174	484	21.06.21	1	1	0	0	NBC	Road
		Tuempingka	1,368	1,992	Kainantu HC	2,082	450	1,045	20.06.21	1	1	0	283	NBC	Road
		Tiungak	570	721	Kainantu HC	973	150	481	20.06.21	1	1	0	14	NBC	Road
		Bibapa (Kibafa)	135	277	Kainantu HC	316	76	162	21.06.21	1	1	0	2	NBC	Road
		Koimpampa (Koipex/Koipa)	168	235	Kainantu HC	229	50	113	21.06.21	1	1	0	0	NBC	Road
		Tauntaumpa (Dump Site)	415	698	Kainantu HC	952	150	469	21.06.21	1	1	0	23	NBC	Road
		Komasi	397	451	Kainantu HC										Same under Omaura Wd 25
		Umpia	348	447	Kainantu HC	234	58	127	21.06.21	1	1	0	46	NBC	Road
		Efemfa (Anona)	709	736	Kainantu HC	788	231	400	24.06.21	1	1	0	75	NBC	Road
		Banefa	501	496	Kainantu HC	503	77	236	26.06.21	1	1	0		NBC	Road
		Erabi	41	0	Kainantu HC	380	73	186	20.06.21	1	1	0	39	NBC	Road
		Akanompa	98	35	Kainantu HC	251	48	125	21.06.21	1	1	0	0	NBC	Road
		Basenangka	762	1,066	Kainantu HC	1,539	238	743	21.06.21	1	1	0	0	NBC	Road
		Konofi-Kosasa		622	Kainantu HC	837	148	427	21.06.21	1	1	0	0	NBC	Road
		Daverunka/Riverside		404	Kainantu HC	617	100	299	21.06.21	1	1	0	0	NBC	Road
		Kamano Compound	88	0	Kainantu HC										Same place in K92 Urban Ward 1
11	Onkono		5,219	5,460		6,049	1,145	3,041		14	14	0	82		
		Aiamontina	1,382	1,411	Kainantu HC	1,451	362	747	26.06.21	1	1	0		NBC	Road
		Tukampa	593	426	Kainantu HC	534	83	261	23.06.21	1	1	0	3	NBC	Road
		Dorompa	797	182	Kainantu HC	172	28	84	24.06.21	1	1	0	0	NBC	Road
		Tunonpimpa	200	100	Kainantu HC					1	1	0		NBC	Included Under Aka'anantu Wd 10
		Oyanaka	341	262	Kainantu HC					1	1	0		NBC	Included Under Agarabi
		Afamo	370	245	Kainantu HC	323	60	159	23.06.21	1	1	0	22	NBC	Road
		Asafa	137	430	Kainantu HC	293	62	154	23.06.21	1	1	0	9	NBC	Road
		Konkua	1,092	706	Kainantu HC	1,091	208	550	24.06.21	1	1	0		NBC	Road
		Uvirempa	307	66	Kainantu HC					1	1	0		NBC	Included Under Agarabi
		Pomasi No 1		461	Kainantu HC	972	100	482	27.06.21	1	1	0		NBC	Road
		Pomasi No 2		529	Kainantu HC	304	80	154	23.06.21	1	1	0	0	NBC	Road
		Pomasi Primary School		0	Kainantu HC	172	22	84	26.06.21	1	1	0	14	NBC	Road
		Nafempa		643	Kainantu HC	689	129	343	24.06.21	1	1	0	34	NBC	Road
		Aiyamontenu Primary School		0	Kainantu HC	48	11	23	26.06.21	1	1	0	0	NBC	Road
12	Aubana		7,392	6,336		8,583	1,603	4,351		13	12	0	457		
		Bilimoa No 1	1,235	1,065	Kainantu HC	1,015	206	505	27.06.21	1	1	0	145	NBC	Road

LLG	WARD	VILLAGE	Estimated 2021 Population Based On 2000 Census	Estimated 2021 Population Based On 2018	Health Centre	Population Surveyed	House Holds Surveyed	Nets Issued	Date Of Distribution	Villages	Digicel	Emobile	Houses With Radios	Radio Networks	Comments
		Punano No 1	912	998	Kainantu HC	867	189	407	30.06.21	1	1	0	11	NBC	Road
		Tuta	1,106	1,005	Kainantu HC	1,008	199	503	24.06.21	1	1	0	14	NBC	Road
		Unantu	2,379	2,017	Kainantu HC	1,899	450	965	24.06.21	1	1	0	112	NBC	Road
		Punano No 2	746	0	Kainantu HC					1					Same place in Ward 15
		Bilimoa No 2	1,014	451	Kainantu HC	1,115	200	563	27.06.21	1	1	0	16	NBC	Road
		Bilimoa No 3		387	Kainantu HC	164	50	134	28.06.21	1	1	0	49	NBC	Road
		Kumian		414	Kainantu HC	1,109	178	558	28.06.21	1	1	0	93	NBC	Road
		Kainantu Mining Camp Site		0	Kainantu HC	759		400	28.06.21	1	1	0		NBC	Road
		Unantu Primary School		0	Kainantu HC	247	50	122	24.06.21	1	1	0	6	NBC	Road
		Bilimoa Primary School		0	Kainantu HC	63	11	31	27.06.21	1	1	0	10	NBC	Road
		Tuta Primary School		0	Kainantu HC	98	20	47	24.06.21	1	1	0	0	NBC	Road
		Kariya		NEW	Kainantu HC	239	50	116	25.06.21	1	1	0	1	NBC	Road
		Asupuya		0	Kainantu HC										Same village covered in Wd 17
13	Pakino		1,040	1,666		1,250	238	625		4	4	0	45		
		Namongka	689	653	Kainantu HC	252	50	123	22.06.21	1	1	0	24	NBC	Road
		Amunampa		707	Kainantu HC	306	55	155	26.06.21	1	1	0	0	NBC	Road
		Puyanantu	350	0	Kainantu HC										Non Existant
		Namongka No 2		206	Kainantu HC	566	100	289	24.06.21	1	1	0	21	NBC	Road
		Namongka No 3		101	Kainantu HC	126	33	58	24.06.21	1	1	0	0	NBC	Road
14	Anonapa		2,911	3,119		3,611	800	1,831		4	4	0	221		
		Kanimpa	699	565	Kainantu HC	560	150	298	22.06.21	1	1	0	81	NBC	Road
		Umindofintenu	1,421	1,685	Kainantu HC	1,932	400	969	22.06.21	1	1	0	131	NBC	Road
		Iyomintapa	791	869	Kainantu HC	817	200	413	22.06.21	1	1	0	9	NBC	Road
		Uminfintenu Primary School		0	Kainantu HC	302	50	151		1	1	0		NBC	Road
15	Akuitenu		8,351	8,559		8,057	1,642	4,040		14	14	0	646		
		Isontenu	1,496	1,144	Kainantu HC	1,547	349	732	23.06.21	1	1	0	158	NBC	Road
		Barinengka	859	1,104	Kainantu HC	816	167	400	26.06.21	1	1	0	98	NBC	Road
		Mapara	327	495	Kainantu HC	470	95	239	23.06.21	1	1	0	49	NBC	Road
		Punano No 2	689	0	Kainantu HC	541	99	271	22.06.21	1	1	0	11	NBC	Road
		Bikupimpa	1,151	1,100	Kainantu HC	968	229	504	27.06.21	1	1	0	151	NBC	Road
		Kanampa	164	0	Kainantu HC	343	71	171	22.06.21	1	1	0	2	NBC	Road
		Onama	466	241	Kainantu HC										Same place in K92 Urban Ward 1 (Bani Road)
		Komumpa	386	501	Kainantu HC	573	96	294	23.06.21	1	1	0		NBC	Road
		Bevompa	80	174	Kainantu HC	162	29	80	26.06.21	1	1	0	9	NBC	Road
		Perore	474	678	Kainantu HC	217	50	108	26.06.21	1	1	0		NBC	Road
		Okipa	1,065	1,657	Kainantu HC	1,587	297	806	26.06.21	1	1	0	82	NBC	Road
		Kemefa	290	651	Kainantu HC	547	100	282	27.06.21	1	1	0	69	NBC	Road
		Onayo	227	0	Kainantu HC	138	34	76	23.06.21	1	1	0	15	NBC	Road
		Munengka	61	0	Kainantu HC	75	13	42	24.06.21	1	1	0	0	NBC	Road
		Ayokom/Aronaira	554	689	Kainantu HC										Abandoned-Tribal Fights
		Agarabi Community School	63	125	Kainantu HC	73	13	35	23.06.21	1	1	0	2	NBC	Road
16	Anawa-Yonki		4,851	5,674		5,041	1,120	2,490		17	16	16	265		
		Bompe	213	1,002	Yauna HC	492	50	245	10.06.21	1	1	1	0	96	Road
		Okantenu	534	889	Yauna HC	523	131	264	09.06.21	1	1	1	18	94	TREK
		Punampa	491	0	Yauna HC	329	97	164	10.06.21	1	1	1	71	96	Road
		Keketupa	235	0	Yauna HC	200	36	97	10.06.21	1	1	1	16	96	Road
		Asompa	231	1,078	Yauna HC	855	168	407	09.06.21	1	1	1	40	94	TREK
		Avamapa	194	134	Yauna HC	140	38	68	09.06.21	1	1	1	10	94	TREK
		Anumtapa	153	112	Yauna HC										Non Existant
		Kakabiopa	301	258	Yauna HC	256	57	127	09.06.21	1	1	1	8	94	TREK
		Yaimipa	282	214	Yauna HC	190	44	92	09.06.21	1	1	1	8	95	TREK
		Kasefempa	623	658	Yauna HC	643	139	321	11.06.21	1	1	1	28	93	Road
		Owampa	190	132	Yauna HC	137	38	67	11.06.21	1	1	1	5	93	Road
		Amuya	258	328	Yauna HC	356	86	177	11.06.21	1	1	1	14	93	Road
		Keketuantu	378	0	Yauna HC					1					Included Under Punampa
		Nonampa	321	458	Yauna HC	292	86	148	10.06.21	1	1	1	24	96	Road
		Parepa	135	0	Yauna HC	166	50	83	10.06.21	1	1	1	15	96	Road
		Anumapa Salvation Army	18	0	Yauna HC	125	37	61	09.06.21	1	1	1	4	94	TREK
		Yauna Ebc Station	225	222	Yauna HC	167	32	84	12.06.21	1	1	1	2	93	Road
		Drillers Camp	69	187	Yauna HC	170	31	85	11.06.21	1	1	1	2	93	Road
17	Yonki		7,817	8,915		8,355	1,959	4,238		20	20	10	350		
		Abinakenu	771	839	Kassam HC	471	115	270	22.06.21	1	1	0	0	K/93FM/100	Road/2Hr Trek
		Asupuia	474	595	Kassam HC	437	91	224	19.06.21	1	1	0	2	K/93FM/100	Road/1Hr Trek
		Doyana Ken U	713	832	Kassam HC	736	162	357	18.06.21	1	1	0	24	K/93FM/100	Road
		Kamu'anufa	460	319	Kassam HC	344	73	173	20.06.21	1	1	0	4	K/93FM/100	Road
		Sosointenu	1,008	978	Kassam HC	711	157	359	18.06.21	1	1	1	38	K/93FM/100	Road
		Bamasipa	84	0	Kassam HC	72	21	38	22.06.21	1	1	0	0	K/93FM/100	Road
		Kufina	102	145	Kassam HC	183	50	94	20.06.21	1	1	1	3	K/93FM/100	Road
		Tibofa	208	396	Kassam HC	311	70	157	20.06.21	1	1	1	0	K/93FM/100	Road
		Bakofa	186	284	Kassam HC	538	147	270	19.06.21	1	1	1	34	K/93FM/100	Road
		Arona	276	434	Kassam HC	315	65	156	19.06.21	1	1	1	13	K/93FM/100	Road
		Usinimpa	100	199	Kassam HC	188	42	94	18.06.21	1	1	0	21	K/93FM/100	Road
		Kolwara	401	570	Kassam HC	497	95	233	18.06.21	1	1	1	19	K/93FM/100	Road
		Batakona	256	249	Kassam HC	279	82	140	21.06.21	1	1	1	5	K/93FM/100	Road/1 Hr Trek
		Kona Rot	1,153	1,173	Kassam HC	1,054	300	562	18.06.21	1	1	1	37	K/93FM/100	Road
		Tafauampa/Bana'ana	350	153	Kassam HC	117	32	60	20.06.21	1	1	0	0	K/93FM/100	Road/3Hr Trek
		Anonantu	417	381	Kassam HC	333	87	177	20.06.21	1	1	0	82	K/93FM/100	Road
		Sosointenu Community School	12	0	Kassam HC	107	20	47	18.06.21	1	1	1	7	K/93FM/100	Road
		Akamore Block	846	972	Kassam HC	1,307	271	646	23.06.21	1	1	1	61	K/93FM/100	Road
		Tirikafa		130	Kassam HC	253	50	126	22.06.21	1	1	0	0	K/93FM/100	Road/2Hr Trek
		Davefa		267	Kassam HC	102	29	55	22.06.21	1	1	0	0	K/93FM/100	Road/2Hr Trek

LLG	WARD	VILLAGE	Estimated 2021 Population Based On 2000 Census	Estimated 2021 Population Based On 2018	Health Centre	Population Surveyed	House Holds Surveyed	Nets Issued	Date Of Distribution	Villages	Digicel	Emobile	Houses With Radios	Radio Networks	Comments
18	Arona		6,024	8,930		8,430	1,657	4,247		16	16	16	225		
		Anasina	2,193	492	Kassam HC	701	99	349	20.06.21	1	1	1	10	KBK/93FM	Road
		Puri	1,983	772	Kassam HC	817	119	379	22.06.21	1	1	1	8	KBK/93FM	Road
		Kapore Block	1,208	900	Kassam HC	768	187	390	19.06.21	1	1	1	22	KBK/93FM	Road
		Katope Block	313	359	Kassam HC	514	100	256	20.06.21	1	1	1	6	KBK/93FM	Road
		Kassam Ebc Station	327	417	Kassam HC	291	45	168	22.06.21	1	1	1	1	KBK/93FM	Road
		Puri Block		445	Kassam HC	409	100	204	21.06.21	1	1	1	19	KBK/93FM	Road
		Modofa		913	Kassam HC	747	200	366	19.06.21	1	1	1	18	KBK/93FM	Road
		Kawaka		623	Kassam HC	534	112	270	22.06.21	1	1	1	4	KBK/93FM	Road
		Kassam Top		827	Kassam HC	722	77	360	22.06.21	1	1	1	6	KBK/93FM	Road
		Akai		480	Kassam HC	490	99	246	21.06.21	1	1	1	0	KBK/93FM	Road
		Kento Block		514	Kassam HC	385	74	195	21.06.21	1	1	1	0	KBK/93FM	Road
		Yofi		373	Kassam HC	450	100	234	20.06.21	1	1	1	40	KBK/93FM	Road/4 Hrs Trek
		Akai Block		706	Kassam HC	408	70	209	21.06.21	1	1	1	8	KBK/93FM	Road
		Nananampa		421	Kassam HC	267	76	137	21.06.21	1	1	1	25	KBK/93FM	Road
		Prumepa		688	Kassam HC	663	150	349	20.06.21	1	1	1	55	KBK/93FM	Road
		Kunai Block		NEW	Kassam HC	264	49	135	21.06.21	1	1	1	3	KBK/93FM	Road
19	Mamarain		2,287	2,626		2,072	462	1,079		4	4	2	6		
		Abonamu	922	927	Kassam HC	862	193	469	20.06.21	1	1	0	0	K/93FM/100	Road
		Mamarain	1,112	1,194	Kassam HC	813	200	419	20.06.21	1	1	0	0	K/93FM/100	Road
		Abonamo Community School	253	289	Kassam HC	101	19	54	19.06.21	1	1	1	1	K/93FM/100	Road
		Seven Market		217	Kassam HC	296	50	137	19.06.21	1	1	1	5	K/93FM/100 FM	
20	Binumarien		1,008	1,057		967	223	492		1	1	0	55		
		Binumarien	1,008	1,057	Kassam HC	967	223	492	20.06.21	1	1	0	55	K/93FM/100	Road/2 Day Trek
21	Pundibasa		2,982	3,358		2,839	732	1,444		5	4	0	17		
		Pundibasa 1 & 2	1,392	936	Kassam HC	561	141	282	23.06.21	1	1	0	0	K/93FM/100	Road/1 Day Trek
		Pundibasa 3	1,363	1,732	Kassam HC	1,359	301	684	19.06.21	1	1	0	17	K/93FM/100	Road
		Pundibasa 4	227	0	Kassam HC	145	40	74	22.06.21	1	1	0	0	K/93FM/100	Road
		Hatuka (Pundibasa 2)		689	Kassam HC	509	150	263	22.06.21	1	1	0	0	K/93FM/100	Road/ 6 hrs Treks
		Hutuka Riverside		NEW	Kassam HC	265	100	141	22.06.21	1	0	0	0	K/93FM/100	Road/Trek
22	Asa		2,774	2,303		2,235	437	1,073		3	3	0	0		
		Kambaira	1,004	740	Omaura HC	694	142	334	15.06.21	1	1	0	0		Road/2 Days Trek
		Kurangka	546	557	Omaura HC	552	95	264	15.06.21	1	1	0	0		Road/2 Days Trek
		Tumbedaka	1,224	1,006	Omaura HC	989	200	475	15.06.21	1	1	0	0		Road/2 Days Trek
23	Kubana		3,637	2,381		2,305	435	1,103		5	5	0	0		
		Apomaka	1,220	739	Omaura HC	927	178	444	15.06.21	1	1	0	0		Road/Trek
		Bioka	2,087	1,187	Omaura HC	644	137	310	15.06.21	1	1	0	0		Road/Trek
		Mendikwae	125	60	Omaura HC	318	45	152	18.06.21	1	1	0	0		Road
		Andrew Block	151	231	Omaura HC	234	41	112	18.06.21	1	1	0	0		Road
		Anakapu	55	164	Omaura HC	182	34	85	18.06.21	1	1	0	0		Road
24	Yamonka		6,952	7,661		7,149	1,364	3,435		11	11	0	0		
		Onamuna		668	Omaura HC	406	99	195	13.06.21	1	1	0	0		Road
		Akuna	1,525	1,867	Omaura HC	2,178	387	1,044	13.06.21	1	1	0	0		Road
		Amonmonta	1,065	894	Omaura HC	1,068	190	512	13.06.21	1	1	0	0		Road
		Tomoea	1,010	750	Omaura HC	690	149	331	13.06.21	1	1	0	0		Road
		Wopepa	1,175	955	Omaura HC	1,001	200	480	13.06.21	1	1	0	0		Road
		Kaiapa	260	249	Omaura HC	225	49	109	13.06.21	1	1	0	0		Road
		Yanapa	576	735	Omaura HC	718	149	344	13.06.21	1	1	0	0		Road
		Konepao	233	240	Omaura HC	137	18	66	13.06.21	1	1	0	0		Road
		Maropa	505	592	Omaura HC	359	59	173	13.06.21	1	1	0	0		Road
		Amodanapa	70	224	Omaura HC	109	14	52	13.06.21	1	1	0	0		Road
		Enkempa	532	486	Omaura HC	258	50	129	13.06.21	1	1	0	0		Road
25	Karawepa		5,705	5,211		4,946	679	2,330		11	11	0	0		
		Ukarompa	1,040	1,042	Omaura HC	919	61	387	16.06.21	1	1	0	0		Road
		Iranompa	1,572	798	Omaura HC	533	91	266	16.06.21	1	1	0	0		Road
		Anamunapa	828	953	Omaura HC	894	125	429	16.06.21	1	1	0	0		Road
		Pundayompa	777	880	Omaura HC	535	98	256	16.06.21	1	1	0	0		Road
		Komasi	738	0	Omaura HC	374	50	180	16.06.21	1	1	0	0		Road
		Binure	750	556	Omaura HC	383	64	185	16.06.21	1	1	0	0		Road
		Kampimpa		0	Omaura HC	159	20	76	16.06.21	1	1	0	0		Road
		Nofiumpa		0	Omaura HC	410	50	197	16.06.21	1	1	0	0		Road
		Umaiyompa		307	Omaura HC	205	32	98	16.06.21	1	1	0	0		Road
		Asiranka		393	Omaura HC	248	38	119	16.06.21	1	1	0	0		Road
		Aionora		281	Omaura HC	286	50	137	16.06.21	1	1	0	0		Road
26	Binakenu		8,945	7,720		7,766	1,598	3,728		7	7	0	0		
		Ikana	1,848	1,709	Omaura HC	1,753	394	843	18.06.21	1	1	0	0		Road
		Omaura 1	1,729	1,379	Omaura HC	1,390	283	667	18.06.21	1	1	0	0		Road
		Onaningka	1,823	1,737	Omaura HC	1,708	330	820	18.06.21	1	1	0	0		Road
		Sasaura	1,586	939	Omaura HC	1,110	250	532	18.06.21	1	1	0	0		Road
		Omaura 2	1,515	934	Omaura HC	879	180	421	18.06.21	1	1	0	0		Road
		Omaura Community School	31	273	Omaura HC	320	50	154	18.06.21	1	1	0	0		Road
		Omaura Sda Mission	413	750	Omaura HC	606	111	291	18.06.21	1	1	0	0		Road
27	Arau		2,420	1,666		1,953	338	936		4	4	0	0		
		Arau No 1	859	596	Omaura HC	579	100	278	15.06.21	1	1	0	0		Road
		Arau No 2	730	331	Omaura HC	536	96	255	15.06.21	1	1	0	0		Road/Trek
		Barokira	830	477	Omaura HC	603	99	290	15.06.21	1	1	0	0		Road/Trek
		Umisuan		263	Omaura HC	235	43	113	15.06.21	1	1	0	0		Road/Trek
28	Osarora		3,892	2,069		2,263	401	1,069		4	4	0	0		
		Kora	307	323	Omaura HC	510	86	245	15.06.21	1	1	0	0		Road/Trek
		Eutata	615	285	Omaura HC	260	48	125	15.06.21	1	1	0	0		Road/Trek
		Luvankara	1,466	515	Omaura HC	448	90	215	15.06.21	1	1	0	0		Road/Trek
		Saiora	1,504	945	Omaura HC	1,045	177	484	15.06.21	1	1	0	0		Road/Trek
29	Andandara		2,093	0		1,131	200	553		3	0	0	57		
		Baenabuta	1,049	0	Barabundaira HC	252	50	128	19.06.21	1	0	0	4		Road/Trek

LLG	WARD	VILLAGE	Estimated 2021 Population Based On 2000 Census	Estimated 2021 Population Based On 2018	Health Centre	Population Surveyed	House Holds Surveyed	Nets Issued	Date Of Distribution	Villages	Digicel	Emobile	Houses With Radios	Radio Networks	Comments
		Vairanauta	975	0	Barabundaira HC	551	100	270	19.06.21	1	0	0	45		Road/Trek
		Suwaira Ebc	69	0	Barabundaira HC	328	50	155	19.06.21	1	0	0	8		Road/Trek
30	Enrandora		2,138	3,194		3,196	707	1,543		2	2	0	360		
		Barabuna	1,292	2,164	Barabundaira HC	2,051	458	960	19.06.21	1	1	0	204	NBC	Road/Trek
		Batainabura	846	1,030	Barabundaira HC	1,145	249	583	19.06.21	1	1	0	156	NBC	Road/Trek
31	Norikori		5,981	5,380		6,406	1,429	3,165		38	22	1	614		
		Avana Village	139	0	Barabundaira HC	861	149	412	18.06.21	1	1	0	80	NBC	Road/Trek
		Norikori Plantation	164	0	Barabundaira HC	278	50	123	23.06.21	1	1	0	0	NBC	Road/Trek
		Batandara Village	151	0	Barabundaira HC	283	50	141	18.06.21	1	1	0	21	NBC	Road/Trek
		Mamaura	300	0	Barabundaira HC	81	25	42	23.06.21	1	1	0	7	NBC	Road/Trek
		Bairikaha	276	534	Barabundaira HC	339	87	162	23.06.21	1	1	0	21	NBC	Road/Trek
		Ebara	337	0	Barabundaira HC	184	45	90	23.06.21	1	1	0	9	NBC	Road/Trek
		Nororira	337	568	Barabundaira HC	324	88	158	23.06.21	1	1	0	8	NBC	Road/Trek
		Tintiora	435	0	Barabundaira HC	202	48	102	18.06.21	1	1	0	13	NBC	Road/Trek
		Abaora	378	646	Barabundaira HC	612	136	305	18.06.21	1	1	0	82	NBC	Road/Trek
		O'ompira	29	0	Barabundaira HC	119	35	60	23.06.21	1	1	0	24	NBC	Road/Trek
		Aunkira	313	0	Barabundaira HC	150	50	78	18.06.21	1	1	0	30	NBC	Road/Trek
		Aiyura 4 Square Village	76	520	Barabundaira HC	271	50	132	18.06.21	1	1	1	49	NBC	Road/Trek
		Bantura	153	799	Barabundaira HC	545	198	299	18.06.21	1	1	0	21	NBC	Road/Trek
		Tairora Community School	209	0	Barabundaira HC	99	22	45	23.06.21	1	1	0	12	NBC	Road/Trek
		Tairora High School	202	120	Barabundaira HC	11	2	4	23.06.21	1	1	0	1	NBC	Road/Trek
		Job Block	45	0	Barabundaira HC	54	19	28	23.06.21	1	1	0	0	NBC	Road/Trek
		Morrison Block	35	0	Barabundaira HC	54	10	26	23.06.21	1	1	0	0	NBC	Road/Trek
		Salvation Army Station	16	456	Barabundaira HC	387	92	192	23.06.21	1	1	0	98	NBC	Road/Trek
		Mm Brothers	20	0	Barabundaira HC										Non Existent
		Kamanekera Block	482	867	Barabundaira HC	876	163	422	18.06.21	1	1	0	126	NBC	Road/Trek
		Norikori Forestry Station	27	0	Barabundaira HC					1					Included Under Norikori Plantation
		Country Side	100	0	Barabundaira HC					1					Included Under Avana Village
		Aiyura 4 Square Church	23	0	Barabundaira HC					1					Included Under Avana Village
		Amana Block	18	0	Barabundaira HC					1					Included Under Avana Village
		Yuita Block	67	0	Barabundaira HC					1					Included Under Avana Village
		Ekona Block	92	0	Barabundaira HC					1					Included Under Avana Village
		Kakandra Block 1	108	0	Barabundaira HC					1					Included Under Avana Village
		Kaukau Block	151	0	Barabundaira HC					1					Included Under Avana Village
		Avana Block	251	0	Barabundaira HC					1					Included Under Avana Village
		Keko Block	47	0	Barabundaira HC					1					Included Under Avana Village
		Simen Block	80	0	Barabundaira HC					1					Included Under Avana Village
		Tupex Block	59	0	Barabundaira HC					1					Included Under Avana Village
		Baptist Church	20	0	Barabundaira HC					1					Included Under Avana Village
		Mevite Bock	22	0	Barabundaira HC					1					Included Under Avana Village
		Pombex Block	151	0	Barabundaira HC					1					Included Under Avana Village
		Karanas Block	61	0	Barabundaira HC					1					Included Under Avana Village
		Jungle Camp	29	0	Barabundaira HC	95	13	47	18.06.21	1	1	0	11	NBC	Road/Trek
		Bauka		NEW	Kainantu HC	101	16	49	21.06.21	1	1	0	0	NBC	Road
		Bae Block	581	869	Kainantu HC	480	81	248	20.06.21	1	1	0	1	NBC	Road
32	Nompia		3,299	3,539		3,922	926	1,835		4	1	0	195		
		Babarai	1,594	1,538	Barabundaira HC	1,500	341	720	23.06.21	1	1	0	105	NBC	Road/Trek
		Otara	754	859	Barabundaira HC	1,278	350	601	23.06.21	1	0	0	75		Road/Trek
		Tomaura	337	567	Barabundaira HC	311	58	141	23.06.21	1	0	0	10		Road/Trek
		Atopi	615	575	Barabundaira HC	833	177	373	23.06.21	1	0	0	5		Road/Trek
33	Tontona		2,290	2,417		2,288	525	1,099		4	3	0	31		
		Totona	566	1,240	Barabundaira HC	1,192	287	565	22.06.21	1	0	0	0		Road/Trek
		Tontaina	1,212	547	Barabundaira HC	595	100	284	22.06.21	1	1	0	0	NBC	Road/Trek
		Uha'a	393	501	Barabundaira HC	383	119	198	21.06.21	1	1	0	20	NBC	Road/Trek
		Ebc Barabundora	119	129	Barabundaira HC	118	19	52	20.06.21	1	1	0	11	NBC	Road/Trek
34	Norianda		3,105	2,792		3,331	673	1,597		9	8	0	66		
		Kobuta	746	592	Barabundaira HC	778	116	356	22.06.21	1	1	0	2	NBC	Road/Trek
		Makia	311	282	Barabundaira HC	139	50	70	22.06.21	1	1	0	0	NBC	Road/Trek
		Nubekora	593	386	Barabundaira HC	311	70	155	22.06.21	1	1	0	0	NBC	Road/Trek
		Baramunoora/Eboraba	652	419	Barabundaira HC	332	60	159	22.06.21	1	1	0	0	NBC	Road/Trek
		Eborava	80	313	Barabundaira HC	250	44	125	22.06.21	1	1	0	32	NBC	Road/Trek
		Clarens Pltn	421	384	Barabundaira HC	640	115	298	22.06.21	1	1	0	0	NBC	Road/Trek
		Korona Plantation	272	206	Barabundaira HC	316	71	153	20.06.21	1	1	0	16	NBC	Road/Trek
		Tabeira Village	29	145	Barabundaira HC	377	97	185	20.06.21	1	0	0	16		Road/Trek
		Bairiara		65	Barabundaira HC	188	50	96	22.06.21	1	1	0	0	NBC	Road/Trek
35	Kosa		7,361	6,104		7,112	1,567	3,456		12	7	0	639		
		Abiera	869	913	Barabundaira HC	796	166	384	24.06.21	1	1	0	41	NBC	Road
		Bonta	820	0	Barabundaira HC	900	191	422	24.06.21	1	0	0	86	NBC	Road
		Ontabura	2,210	1,464	Barabundaira HC	1,010	277	523	24.06.21	1	1	0	101	NBC	Road
		Ontabura Primary School		0	Barabundaira HC	67	14	33	24.06.21	1	1	0	13	NBC	Road
		Tonkera	899	608	Barabundaira HC	526	148	273	24.06.21	1	1	0	106	NBC	Road
		Urara	644	695	Barabundaira HC	806	149	382	21.06.21	1	1	0	78	NBC	Road

LLG	WARD	VILLAGE	Estimated 2021 Population Based On 2000 Census	Estimated 2021 Population Based On 2018	Health Centre	Population Surveyed	House Holds Surveyed	Nets Issued	Date Of Distribution	Villages	Digicel	E-mobile	Houses With Radios	Radio Networks	Comments
		Matona	1,149	905	Barabundaira HC	568	131	280	24.06.21	1	0	0	69	NBC	Road
		Bararanda	554	472	Barabundaira HC	644	121	320	22.06.21	1	0	0	0	NBC	Road
		Agoga Plantation	215	245	Barabundaira HC	250	50	120	24.06.21	1	1	0	45	NBC	Road
		Aparilla		803	Barabundaira HC	917	195	418	24.06.21	1	1	0	72	NBC	Road
		Ontenu		0	Barabundaira HC	398	76	189	24.06.21	1	0	0	28	NBC	Road
		Ontenu Primary School		0	Barabundaira HC	230	49	112	24.06.21	1	0	0	0	NBC	Road
				0											
		Kainantu Urban	13,289	11,623		15,521	2,636	7,758		43	47	3	575	47	11623.03292
	1	Kainantu Urban	8,165	9,386		13,535	2,310	6,756		31	30	0	575		
		Tabo Road	542	0	Kainantu HC2					1	1	0		NBC	Included Under Maria Hill
		Maria Hill		1,371	Kainantu HC2	869	149	434	20.06.21	1	1	0	0	NBC	Road
		Watex		0	Kainantu HC2	526	100	267	20.06.21	1	1	0	9	NBC	Road
		Golf Course/KRH		0	Kainantu HC2	157	26	80	23.06.21	1	1	0	0	NBC	Road
		Kainantu Hospital	662	546	Kainantu HC2	719	130	353	20.06.21	1	1	0	29	NBC	Road
		Salvation Army Compound		481	Kainantu HC2	266	50	135	20.06.21	1	1	0	0	NBC	Road
		Nare Street	957	0	Kainantu HC2	170	25	86	21.06.21	1	1	0	36	NBC	Road
		Works Compound		0	Kainantu HC2	74	13	37	20.06.21	1	1	0	12	NBC	Road
		Cemetery/Matmat		328	Kainantu HC2	268	50	128	20.06.21	1	1	0	50	NBC	Road
		Mix Compound		875	Kainantu HC2	963	179	480	21.06.21	1	1	0	0	NBC	Road
		Police Barracks	734	808	Kainantu HC2	1,191	143	596	21.06.21	1	1	0	84	NBC	Road
		Old Airstrip	476	0	Kainantu HC2	242	50	123	20.06.21	1	1	0	27	NBC	Road
		Council Chamber		441	Kainantu HC2	680	98	353	20.06.21	1	1	0	0	NBC	Road
		Kyu High School	456	610	Kainantu HC2	538	117	286	21.06.21	1	1	0	0	NBC	Road
		Ramu Coffee Factory	319	810	Kainantu HC2	662	84	316	20.06.21	1	1	0	0	NBC	Road
		PS Street		0	Kainantu HC2	511	63	246	20.06.21	1	1	0	10	NBC	Road
		Police Station	288	466	Kainantu HC2	368	76	184	20.06.21	1	1	0	0	NBC	Road
		Bani Road	671	895	Kainantu HC2	524	100	255	23.06.21	1	1	0	100	NBC	Road
		Anarai Road S'ment	470	0	Kainantu HC2	146	30	84	20.06.21	1	1	0	16	NBC	Road
		Forest Department	736	337	Kainantu HC2	689	116	332	21.06.21	1	1	0	0	NBC	Road
		Cultural Centre		259	Kainantu HC2	93	14	47	20.06.21	1	1	0	14	NBC	Road
		Aiyos Street		0	Kainantu HC2	290	38	144	20.06.21	1	1	0	0	NBC	Road
		Blue Corner		0	Kainantu HC2	831	135	424	20.06.21	1	1	0	0	NBC	Road
		Banana Block	771	0	Kainantu HC2	260	35	128	20.06.21	1	1	0	0	NBC	Road
		Kabosei/Tino Street	525	0	Kainantu HC2					1					Included Under Diyos Street
		Diyos Street		544	Kainantu HC2	817	115	416	21.06.21	1	1	0	14	NBC	Road
		Bindaira	558	0	Kainantu HC2	323	49	157	26.06.21	1	1	0	49	NBC	Road
		Bundaira CIS Compound		215	Kainantu HC2	320	50	155	26.06.21	1	1	0	50	NBC	Road
		Koyanti Settlement		400	Kainantu HC2	570	197	282	21.06.21	1	1	0	0	NBC	Road
		Kamano Compound		0	Kainantu HC2	170	37	84	20.06.21	1	1	0	25	NBC	Road
		Kainantu Primary School		0	Kainantu HC2	298	41	144	21.06.21	1	1	0	50	NBC	Road
	2	Aiyura Urban	1,464	817		663	107	332		4	4	0	0		
		Aiyura C.r.i./N.a.r.i.	272	211	Kainantu HC2	202	33	99	21.06.21	1	1	0	0	NBC	Road
		Aiyura C.r.i./N.a.r.i.	221	235	Kainantu HC2	131	24	72	21.06.21	1	1	0	0	NBC	Road
		Aiyura C.r.i./N.a.r.i.	413	180	Kainantu HC2	90	15	46	21.06.21	1	1	0	0	NBC	Road
		Aiyura N H S	558	190	Kainantu HC2	240	35	115	23.06.21	1	1	0	0	NBC	Road
	3	Ukarumpa S.i.l.	1,576	285		422	75	207		5	10	0	0		
		Independence Street	223	0	Kainantu HC2						1	0		NBC	Refused Survey, Expatriates
		Valley View Court	164	0	Kainantu HC2						1	0		NBC	Refused Survey, Expatriates
		Vietnam Street	190	0	Kainantu HC2						1	0		NBC	Refused Survey, Expatriates
		Columbia Street	208	245	Kainantu HC2						1	0		NBC	Refused Survey, Expatriates
		North Firth Avenue	168	0	Kainantu HC2	11	2	5	21.06.21	1	1	0	0	NBC	Road
		Aborigine Street	102	0	Kainantu HC2	34	7	17	21.06.21	1	1	0	0	NBC	Road
		The Park Way Groves Avenue	219	0	Kainantu HC2	117	23	58	22.06.21	1	1	0	0	NBC	Road
		Groves/Fifth Avenue	157	0	Kainantu HC2						1	0		NBC	Refused Survey, Expatriates
		SIL Aviation			Kainantu HC2	160	26	77	22.06.21	1	1	0	0	NBC	Road
		South Bloomfield/Eld Boulevard	145	40	Kainantu HC2	100	17	50	22.06.21	1	1	0	0	NBC	Road
	4	Yonki Township	2,083	1,135		901	144	463		3	3	3	0		
		Yonki South Township	1,081	547	Kassam HC2	432	70	223	23.06.21	1	1	1	0	K/93FM/100	Road
		Yonki North Township	812	588	Kassam HC2	403	63	206	23.06.21	1	1	1	0	K/93FM/100	Road
		Hyundai W/Qtrs	82	0	Kassam HC2	66	11	34	23.06.21	1	1	1	0	K/93FM/100	Road
		Drillers Camp	108	0	Kassam HC2										Same as in Ward 16 Kainantu Rural

ANNEX THREE

**EASTERN HIGHLANDS PROVINCE
UNGGAI/BENNA DISTRICT POPULATION 2021
LLIN DISTRIBUTION SUMMARY SHEET**

	Areas near 2000m
	Areas 1600-2000m
	Areas 1200-1600m

LLG	WARD	VILLAGE	Estimated 2021 Population Based On 2000 Census	Estimated 2021 Population Based On 2018	Health Centre	Population Surveyed	House Holds Surveyed	Nets Issued	Date Of Distribution	Villages	Digicel	Bmobile	Houses With Radios	Radio Networks	Comments
UNGGAI/BENNA DISTRICT			78,783	78,783		70,713	16,933	35,480		340	292	109	4,590	300	
Unggai/Benna Rural			78,783	78,783		70,713	16,933	35,480		340	292	109	4,590	300	
1	Sioke		5,027	5,911		5,090	1,412	2,509		19	16	16	0		
		Glahasa	313	0	Goroka Hos					1					Included Under Bobiufa
		Maleroka No 2	361	0	Goroka Hos					1					Included Under Bobiufa
		Safanaga	413	0	Goroka Hos	165	37	75	16.06.21	1	1	1		FM/AM	Road
		Mehibaga	357	0	Goroka Hos	172	50	101	15.06.21	1	1	1		FM/AM	Road
		Safanagam	140	523	Goroka Hos	248	50	119	15.06.21	1	1	1		FM/AM	Road
		Saneya No 1	312	0	Goroka Hos	224	59	109	15.06.21	1	1	1		FM/AM	Road
		Gimiyaga	364	0	Goroka Hos	79	22	43	15.06.21	1	1	1		FM/AM	Road
		Siokel	411	336	Goroka Hos	510	126	251	14.06.21	1	1	1		FM/AM	Road
		Napoga	235	0	Goroka Hos	360	124	171	16.06.21	1	1	1		FM/AM	Road
		Lusilo	299	759	Goroka Hos	340	90	167	14.06.21	1	1	1		FM/AM	Road
		Bobiufa	298	1,435	Goroka Hos	367	119	183	15.06.21	1	1	1		FM/AM	Road
		Kepalaga	371	0	Goroka Hos	366	100	183	15.06.21	1	1	1		FM/AM	Road
		Yogofima	159	0	Goroka Hos	171	50	83	14.06.21	1	1	1		FM/AM	Road
		Gomox	298	0	Goroka Hos	464	100	205	15.06.21	1	1	1		FM/AM	Road
		Agotaki	355	0	Goroka Hos	213	50	118	15.06.21	1	1	1		FM/AM	Road
		Futoga	341	0	Goroka Hos					1					Included Under Agotaki
		Arufa		1,169	Goroka Hos	584	170	269	15.06.21	1	1	1		FM/AM	Road
		Sogomi		851	Goroka Hos	492	150	242	14.06.21	1	1	1		FM/AM	Road
		Napamogona/Napaks		836	Goroka Hos	335	115	190	14.06.21	1	1	1		FM/AM	Road
2	Yofolagabo		6,191	4,430		3,903	944	1,915		21	13	13	0		
		New Camp	357	0	Goroka Hos	190	47	90	14.06.21	1	1	1		FM/AM	Road
		Siopex	354	0	Goroka Hos	335	80	165		1	1	1		FM/AM	Road
		Kosi/Hisa	329	0	Goroka Hos	123	20	62	14.06.21	1	1	1		FM/AM	Road
		Matausa No 4	348	666	Goroka Hos					1					Included Under Magitu 2 Ward 5
		Kibikofa Ose	243	0	Goroka Hos	199	50	100	14.06.21	1	1	1		FM/AM	Road
		Napriifi	275	0	Goroka Hos	54	12	27	15.06.21	1	1	1		FM/AM	Road
		Gitigifagu	308	0	Goroka Hos					1					Included Under Logofate
		Sekatoga	415	0	Goroka Hos					1					Included Under Sifu
		Nagamie	532	0	Goroka Hos					1					Included Under Siopex
		Nupakosa	469	0	Goroka Hos					1					Included Under Magitu 2 Ward 5
		Logofate	327	0	Goroka Hos	274	74	129	14.06.21	1	1	1		FM/AM	Road
		Sifu	361	0	Goroka Hos	252	72	120		1	1	1		FM/AM	Road
		Keni	229	1,191	Goroka Hos					1					Included Under New Camp
		Sopelaga	201	0	Goroka Hos	157	49	82	15.06.21	1	1	1		FM/AM	Road
		Sifoparo	233	0	Goroka Hos	77	22	37	15.06.21	1	1	1		FM/AM	Road
		Feke Feke	126	0	Goroka Hos	157	34	77	14.06.21	1	1	1		FM/AM	Road
		Ikisaga	366	0	Goroka Hos	336	69	157	14.06.21	1	1	1		FM/AM	Road
		Nosaga	375	0	Goroka Hos					1					Included Under Katagu
		Lokiyafise	343	0	Goroka Hos					1					Included Under Katagu
		Katagu		1,574	Goroka Hos	1,328	300	656	22.06.21	1	1	1		FM/AM	Road
		Mohuweto		999	Goroka Hos	421	115	213	16.06.21	1	1	1		FM/AM	Road
3	Gapogunagabo		4,695	6,680		6,591	1,212	3,255		11	11	10	816		
		Ketarobo	709	2,015	Goroka Hos	1,291	50	656	25.06.21	1	1	1	217	FM/AM	Road
		Upegu & Korero	966	1,342	Goroka Hos	914	200	440	23.06.21	1	1	1	96	FM/AM	Road
		Kapora		NEW	Goroka Hos	154	32	74	23.06.21	1	1	1	12	FM/AM	Road
		Zomigu Sioc Lineu	289	0	Goroka Hos	190	50	93	25.06.21	1	1	1	19	FM/AM	Road
		Lahamenegu	266	657	Goroka Hos	469	124	244	22.06.21	1	1	1	74	FM/AM	Road
		Kafukosaro	446	0	Goroka Hos	367	100	186	25.06.21	1	1	1		FM/AM	Road
		Fagasafa	354	0	Goroka Hos	214	50	107	25.06.21	1	1	0	38	FM/AM	Road
		Kosaroka		NEW	Goroka Hos	386	85	191	25.06.21	1	1	1	40	FM/AM	Road
		Lapilo	756	1,384	Goroka Hos	495	100	244	25.06.21	1	1	1	60	FM/AM	Road
		Bena Bridge	553	1,283	Goroka Hos	1,965	392	953	23.06.21	1	1	1	249	FM/AM	Road
		New Tribes Mission	355	0	Goroka Hos	146	29	67	25.06.21	1	1	1	11	FM/AM	Road
4	Korofeigu		6,582	7,074		7,449	2,095	3,945		23	20	8	370		
		Menifo	432	0	Goroka Hos					1					Included Under DPI Korofeigu
		Rigo	387	0	Goroka Hos	233	50	116	24.06.21	1					Road
		Kinigitoga	483	0	Goroka Hos	154	32	79	19.06.21	1	1	1	0	FM/AM	Road
		Nupa	336	1,200	Goroka Hos	709	231	390	20.06.21	1	1	0	74	FM/AM	Road
		Zugu Hege	480	884	Goroka Hos	540	193	290	20.06.21	1	1	0	0	FM/AM	Road
		Korefamunagu	441	0	Goroka Hos	124	23	63	21.06.21	1	1	0	6	FM/AM	Road
		Masingosa	439	0	Goroka Hos	202	50	102	21.06.21	1	1	0	0	FM/AM	Road
		Bash Bata	406	309	Goroka Hos	206	50	105	22.06.21	1	1	0	0	FM/AM	Road
		Kamate	340	0	Goroka Hos	230	50	115	20.06.21	1	1	0	11	FM/AM	Road
		Road Bata	438	730	Goroka Hos	581	150	311	19.06.21	1	1	1	0	FM/AM	Road
		Hamanito	914	0	Goroka Hos	353	136	196	21.06.21	1	1	1	52	FM/AM	Road
		Sigurifia	165	0	Goroka Hos	190	50	96	25.06.21	1	1	0	0	FM/AM	Road
		Hunimai	42	0	Goroka Hos	154	50	83	25.06.21	1	1	1	9	FM/AM	Road
		Kfigu	61	0	Goroka Hos	449	200	268	19.06.21	1	1	0	0	FM/AM	Road
		Karax	105	0	Goroka Hos	406	100	210	24.06.21	1	1	0	40	FM/AM	Road
		Siv Kali Stadium	72	0	Goroka Hos										Non Existant
		Fiofox	418	0	Goroka Hos	178	44	88	24.06.21	1	1	0	22	FM/AM	Road
		U-u-Pa	95	0	Goroka Hos	158	50	86	25.06.21	1	1	0	0	FM/AM	Road
		Kapa Primary School	233	0	Goroka Hos					1					Included Under Kapa Station

LLG	WARD	VILLAGE	Estimated 2021 Population Based On 2000 Census	Estimated 2021 Population Based On 2018	Health Centre	Population Surveyed	House Holds Surveyed	Nets Issued	Date Of Distribution	Villages	Digicel	Bmobile	Houses With Radios	Radio Networks	Comments
		Korofeigu Community School	23	0	Goroka Hos	139	26	70	19.06.21	1	1	1	1	FM/AM	Road
		D.p.i Korofeigu	215	425	Goroka Hos	406	78	201	19.06.21	1	1	1	0	FM/AM	Road
		Nat. D.p.i Korofeigu	58	130	Goroka Hos	135	50	66	19.06.21	1	1	1	0	FM/AM	Road
		Beneveto		1,163	Goroka Hos	1,380	350	738	21.06.21	1	1	0	122	FM/AM	Road
		Kapakamarigi STN		2,233	Goroka Hos	522	132	272	24.06.21	1	1	1	33	FM/AM	Road
5	Magitu		5,176	5,632		4,397	1,264	2,302		28	9	2	480		
		Halo Bodu/Sekagu	170	0	Goroka Hos					1					Included Under Sekagu
		Koropa	312	0	Goroka Hos					1					Included Under ward 3
		Lokiyafise	224	0	Goroka Hos					1					Included Under Magitu 2
		Bego Begofa	278	0	Goroka Hos					1					Included Under Magitu 2
		Bako	390	0	Goroka Hos					1					Included Under Bagainupa
		Gogopa Gosalo	291	0	Goroka Hos					1					Included Under Bagainupa
		Bale-Ehi	333	0	Goroka Hos					1					Included Under Bagahi
		Fole-E	348	0	Goroka Hos					1					Included Under Bagahi
		Garden	371	0	Goroka Hos					1					Included Under Sakanuga
		Logofe	308	0	Goroka Hos					1					Included Under Sakanuga
		Yasigosa	98	0	Goroka Hos					1					Included Under Sakanuga
		Malepatoga	341	0	Goroka Hos					1					Included Under Magitu 2
		Gane	375	0	Goroka Hos					1					Included Under Magitu 2
		Magitu No 2	340	137	Goroka Hos	1,205	250	585	20.06.21	1	1	0	50	FM/AM	Road
		Fopahepa	294	0	Goroka Hos					1					Included Under Hofaga
		Factory Compound	249	0	Goroka Hos					1					Included Under Sakanuga
		Sioifai	189	0	Goroka Hos					1					Included Under Magitu 2
		Kosahepai	266	0	Goroka Hos					1					Included Under Kapakamariki STS Ward 4
		Kapakamariki station		0	Goroka Hos					1					Included Under Kapakamariki STS Ward 4
		Kapakamariki village		0	Goroka Hos					1					Included Under Kapakamariki STS Ward 4
		Soyugu		708	Goroka Hos	203	50	107	22.06.21	1	1	0	42	FM/AM	Road
		Sekagu		389	Goroka Hos	235	49	119	22.06.21	1	1	0	10	FM/AM	Road
		Hofaga		788	Goroka Hos	656	194	338	21.06.21	1	1	0	108	FM/AM	Road
		Small Sakanuga		NEW	Goroka Hos	150	25	69	24.06.21	1	1	0	21	FM/AM	Road
		Sakanuga		1,120	Goroka Hos	776	399	473	21.06.21	1	1	0	144	FM/AM	Road
		Samogo/Hapatoga		1,661	Goroka Hos	411	147	240	16.06.21	1	1	1		FM/AM	Road
		Bagainupa		520	Goroka Hos	355	50	169	23.06.21	1	1	1	33	FM/AM	Road
		Bagahi		309	Goroka Hos	406	100	202	23.06.21	1	1	0	72	FM/AM	Road
6	Hofagayufa		4,859	4,152		4,124	1,214	2,132		20	14	14	0		
		Lotu Pless	280	0	Goroka Hos					1					Same As Ufex
		Ufex	425	0	Goroka Hos	125	42	70	15.06.21	1	1	1		FM/AM	Road
		Abilafo	378	0	Goroka Hos										Non Existant
		Lotobaga	168	0	Goroka Hos										Non Existant
		Libelo	159	0	Goroka Hos										Non Existant
		Yegemima	418	0	Goroka Hos										Non Existant
		Ilapagu	310	0	Goroka Hos										Non Existant
		Gasagu	306	0	Goroka Hos					1					Included Un Sigoya
		Kesosaro	166	0	Goroka Hos	211	89	118	16.06.21	1	1	1		FM/AM	Road
		Hipale	343	0	Goroka Hos	286	100	158	16.06.21	1	1	1		FM/AM	Road
		First & Second 2fa	289	0	Goroka Hos					1					Included Uner Kesosaro
		Joifex	417	0	Goroka Hos	194	46	95	16.06.21	1	1	1		FM/AM	Road
		Gietutoga	271	0	Goroka Hos	110	50	51	16.06.21	1	1	1		FM/AM	Road
		Moskito	105	0	Goroka Hos										Non Existant
		Hafemuga	60	0	Goroka Hos	279	57	127	15.06.21	1	1	1		FM/AM	Road
		Fatai	333	0	Goroka Hos					1					Included Under Hafemuga
		Gofefagu	431	0	Goroka Hos					1					Included Under Tufax
		Kerenaga		439	Goroka Hos	408	141	228	16.06.21	1	1	1		FM/AM	Road
		Matausa		279	Goroka Hos	265	83	144	16.06.21	1	1	1		FM/AM	Road
		Monivi		275	Goroka Hos	288	100	155	16.06.21	1	1	1		FM/AM	Road
		Safa		455	Goroka Hos										Non Existant
		Kapogu		223	Goroka Hos	322	75	160	17.06.21	1	1	1		FM/AM	Road
		Sigoya		676	Goroka Hos	483	115	252	16.06.21	1	1	1		FM/AM	Road
		Fagasa		178	Goroka Hos	228	38	96	16.06.21	1	1	1		FM/AM	Road
		Bena Pri/Sch		32	Goroka Hos					1					Included Under Sigoya
		Sagifa		1,577	Goroka Hos	425	137	231	16.06.21	1	1	1		FM/AM	Road
		Safayufa Pri/Sch		19	Goroka Hos	500	141	247		1	1	1		FM/AM	Road
7	Rintebe		4,310	4,753		4,677	1,026	2,296		10	10	0	166		
		Trigiso	154	0	Sigerehe HC										(Hamlets)Under Sekiluga
		Munue	334	0	Sigerehe HC										(Hamlets)Under Sekiluga
		Sekiluga	238	922	Sigerehe HC	1,171	223	574	15.06.21	1	1	0	22	NBC(KBK)	Road
		Fitalaga	284	0	Sigerehe HC										(Hamlets)Under Sekiluga
		Notapagu	280	0	Sigerehe HC										(Hamlets)Under Sekiluga
		Tuguma Segeya	292	0	Sigerehe HC										(Hamlets)Under Sekiluga
		Lahaparaga	63	0	Sigerehe HC										(Hamlets)Under Sekiluga
		Lopale	82	0	Sigerehe HC										(Hamlets)Under Sekiluga
		Fifaraga	123	0	Sigerehe HC										(Hamlets)Under Sekiluga
		Ploplomari	86	0	Sigerehe HC										(Hamlets)Under Sekiluga
		Fagagitahi	65	0	Sigerehe HC										(Hamlets)Under Sekiluga
		Bleyae	166	0	Sigerehe HC										(Hamlets)Under Sekiluga
		Lupulo	140	0	Sigerehe HC										(Hamlets)Under Sekiluga
		Mokifalo	124	0	Sigerehe HC										(Hamlets)Under Sekiluga
		Fotogu	205	0	Sigerehe HC										(Hamlets)Under Sekiluga
		Negeyae	47	0	Sigerehe HC										(Hamlets)Under Sekiluga
		Lokiyafise	231	0	Sigerehe HC										(Hamlets)Under Sekiluga
		Kaunafa	292	0	Sigerehe HC										(Hamlets)Under Sekiluga
		Segihepato	47	0	Sigerehe HC										(Hamlets)Under Sekiluga

LLG	WARD	VILLAGE	Estimated 2021 Population Based On 2000 Census	Estimated 2021 Population Based On 2018	Health Centre	Population Surveyed	House Holds Surveyed	Nets Issued	Date Of Distribution	Villages	Digicel	Bmobile	Houses With Radios	Radio Networks	Comments
		Memex	119	0	Sigerehe HC										(Hamlets)Under Sekiluga
		Ginigie	79	0	Sigerehe HC										(Hamlets)Under Sekiluga
		Gritoga	51	0	Sigerehe HC										(Hamlets)Under Sekiluga
		Soyugupol Sitatoga	105	0	Sigerehe HC										(Hamlets)Under Sekiluga
		Ninifare	58	0	Sigerehe HC										(Hamlets)Under Sekiluga
		Bogellilo	263	0	Sigerehe HC										(Hamlets)Under Sekiluga
		Safameto	340	0	Sigerehe HC										(Hamlets)Under Sekiluga
		Rintebe High School	42	202	Sigerehe HC	219	40	109	15.06.21	1	1	0	14	NBC(KBK)	Road
		Koropa		911	Sigerehe HC	827	185	404	15.06.21	1	1	0	41	NBC(KBK)	Road
		Yanofi		323	Sigerehe HC	280	70	133	15.06.21	1	1	0	11	NBC(KBK)	Road
		Lehefaro		243	Sigerehe HC	189	50	99	15.06.21	1	1	0	11	NBC(KBK)	Road
		Gohisipa		523	Sigerehe HC	443	100	211	15.06.21	1	1	0	42	NBC(KBK)	Road
		Yanota		201	Sigerehe HC	219	44	103	15.06.21	1	1	0	2	NBC(KBK)	Road/Trek
		Nagamito		530	Sigerehe HC	498	137	249	15.06.21	1	1	0	4	NBC(KBK)	Road
		Namaro		220	Sigerehe HC	234	50	112	15.06.21	1	1	0	15	NBC(KBK)	Road
		Segeya		677	Sigerehe HC	597	127	302	15.06.21	1	1	0	4	NBC(KBK)	Road
8	Mipo	Klopabo	2,351	1,907		1,826	405	898		5	5	0	63		
		Yagageve	271	0	Sigerehe HC										Hamlets Under various villages in the ward
		Amoke	320	0	Sigerehe HC										Hamlets Under various villages in the ward
		Yanifa	285	0	Sigerehe HC										Hamlets Under various villages in the ward
		Ufetoga	357	0	Sigerehe HC										Hamlets Under various villages in the ward
		Gupomoluga	362	0	Sigerehe HC										Hamlets Under various villages in the ward
		Sekse Kegu	389	0	Sigerehe HC										Hamlets Under various villages in the ward
		Goluga	366	0	Sigerehe HC										Hamlets Under various villages in the ward
		Masagu		265	Sigerehe HC	328	49	162	18.06.21	1	1	0	0	NBC(KBK)	Road
		Lakafo		263	Sigerehe HC	214	50	109	18.06.21	1	1	0	2	NBC(KBK)	Road
		Nayufa		531	Sigerehe HC	562	127	271	18.06.21	1	1	0	32	NBC(KBK)	Road
		Safanaga		228	Sigerehe HC	260	49	129	18.06.21	1	1	0	2	NBC(KBK)	Road
		Mipo		621	Sigerehe HC	462	130	227	18.06.21	1	1	0	27	NBC(KBK)	Road
9	Yatgu-Safa	Megunagu	2,237	1,516		1,439	289	689		3	3	0	35		
		Kinagu	131	0	Sigerehe HC										Hamlets Under various villages in the ward
		Sabri	138	104	Sigerehe HC										Abandoned
		Fiponuga	117	0	Sigerehe HC										Hamlets Under various villages in the ward
		Lupulo	138	0	Sigerehe HC										Hamlets Under various villages in the ward
		Savonuga	58	0	Sigerehe HC										Hamlets Under various villages in the ward
		Itipo	198	0	Sigerehe HC										Hamlets Under various villages in the ward
		Potali	144	0	Sigerehe HC										Hamlets Under various villages in the ward
		Parap-Nagamito	46	0	Sigerehe HC										Hamlets Under various villages in the ward
		Pupuneto	121	0	Sigerehe HC										Hamlets Under various villages in the ward
		Notapagu	93	0	Sigerehe HC										Hamlets Under various villages in the ward
		Gomolimise	205	0	Sigerehe HC										Hamlets Under various villages in the ward
		Fobisaga	40	0	Sigerehe HC										Hamlets Under various villages in the ward
		Gagopagu	359	0	Sigerehe HC										Hamlets Under various villages in the ward
		Okofeu	194	0	Sigerehe HC										Hamlets Under various villages in the ward
		Mulifo	25	0	Sigerehe HC										Hamlets Under various villages in the ward
		Bigihetiluga	63	0	Sigerehe HC										Hamlets Under various villages in the ward
		Mongamitoga	114	0	Sigerehe HC										Hamlets Under various villages in the ward
		Salapagu	54	0	Sigerehe HC										Hamlets Under various villages in the ward
		Megunagu		657	Sigerehe HC	821	149	386	18.06.21	1	1	0	6	NBC(KBK)	Road
		Safa no. 1		321	Sigerehe HC	268	50	131	18.06.21	1	1	0	9	NBC(KBK)	Road
		Kafruga		433	Sigerehe HC	350	90	172	18.06.21	1	1	0	20	NBC(KBK)	Road
10	Benevenabo		3,469	3,914		3,049	751	1,511		9	9	0	74		
		Amko	51	0	Sigerehe HC										Hamlets Under various villages in the ward
		Maletimima	67	0	Sigerehe HC										Hamlets Under various villages in the ward
		Klulolo	261	0	Sigerehe HC										Hamlets Under various villages in the ward
		Kolatoga	138	0	Sigerehe HC										Hamlets Under various villages in the ward
		Sihepise	82	0	Sigerehe HC										Hamlets Under various villages in the ward
		Lupuhepato	154	0	Sigerehe HC										Hamlets Under various villages in the ward
		Seku Gosalo	19	0	Sigerehe HC										Hamlets Under various villages in the ward
		Lotoyafalo	58	0	Sigerehe HC										Hamlets Under various villages in the ward

LLG	WARD	VILLAGE	Estimated 2021 Population Based On 2000 Census	Estimated 2021 Population Based On 2018	Health Centre	Population Surveyed	House Holds Surveyed	Nets Issued	Date Of Distribution	Villages	Digicel	Bmobile	Houses With Radios	Radio Networks	Comments
		Efanuga	172	0	Sigerehe HC										Hamlets Under various villages in the ward
		Gatapilalo	65	0	Sigerehe HC										Hamlets Under various villages in the ward
		Gilmegu	82	0	Sigerehe HC										Hamlets Under various villages in the ward
		Sitoga	86	0	Sigerehe HC										Hamlets Under various villages in the ward
		Fuki	193	0	Sigerehe HC										Hamlets Under various villages in the ward
		Glenagai	124	0	Sigerehe HC										Hamlets Under various villages in the ward
		Lupluka	112	0	Sigerehe HC										Hamlets Under various villages in the ward
		Samox	44	0	Sigerehe HC										Hamlets Under various villages in the ward
		Suhev Camp	46	0	Sigerehe HC										Hamlets Under various villages in the ward
		Friga	58	0	Sigerehe HC										Hamlets Under various villages in the ward
		Amiyugu	70	0	Sigerehe HC										Hamlets Under various villages in the ward
		Igimiluga	119	0	Sigerehe HC										Hamlets Under various villages in the ward
		Masalapetoga	63	0	Sigerehe HC										Hamlets Under various villages in the ward
		Yasigosalo	60	0	Sigerehe HC										Hamlets Under various villages in the ward
		Korapalo	95	0	Sigerehe HC										Hamlets Under various villages in the ward
		Huhutoga	126	0	Sigerehe HC										Hamlets Under various villages in the ward
		Tapugu	54	0	Sigerehe HC										Hamlets Under various villages in the ward
		Country Side	58	0	Sigerehe HC										Hamlets Under various villages in the ward
		Mafu	47	0	Sigerehe HC										Hamlets Under various villages in the ward
		Zoie	96	0	Sigerehe HC										Hamlets Under various villages in the ward
		Sigosalo	140	0	Sigerehe HC										Hamlets Under various villages in the ward
		Nosagaluga	142	0	Sigerehe HC										Hamlets Under various villages in the ward
		Kisuka	23	0	Sigerehe HC										Hamlets Under various villages in the ward
		Nokuka	123	0	Sigerehe HC										Hamlets Under various villages in the ward
		Sigere	19	0	Sigerehe HC										Hamlets Under various villages in the ward
		Nosagaluga	205	0	Sigerehe HC										Hamlets Under various villages in the ward
		Kereluga	147	0	Sigerehe HC										Hamlets Under various villages in the ward
		Galisatoga	51	0	Sigerehe HC										Hamlets Under various villages in the ward
		Sigerehi Station	23	146	Sigerehe HC	222	42	106	20.06.21	1	1	0	3	NBC (KBK)	Road
		Oyafaufa		635	Sigerehe HC	383	97	194	20.06.21	1	1	0	8	NBC (KBK)	Road
		Safayufa		521	Sigerehe HC	484	133	244	20.06.21	1	1	0	11	NBC (KBK)	Road
		Kinimi		211	Sigerehe HC	216	41	107	20.06.21	1	1	0	10	NBC (KBK)	Road
		Napayufa		192	Sigerehe HC	118	28	57	20.06.21	1	1	0	10	NBC (KBK)	Road
		Yogijyo		454	Sigerehe HC	394	84	182	20.06.21	1	1	0	20	NBC (KBK)	Road
		Sinonuga		617	Sigerehe HC	354	100	178	20.06.21	1	1	0	4	NBC (KBK)	Road
		Kogaru		935	Sigerehe HC	589	148	297	20.06.21	1	1	0	2	NBC (KBK)	Road
		Gopogu		202	Sigerehe HC	289	78	146	20.06.21	1	1	0	6	NBC (KBK)	Road
11	Oregegabo		3,638	1,993		2,960	659	1,454		10	10	1	55		
		Gugutoga	231	0	Sigerehe HC										Hamlets Under various villages in the ward
		Gonumusalo	189	0	Sigerehe HC										Hamlets Under various villages in the ward
		Mehi	198	0	Sigerehe HC										Hamlets Under various villages in the ward
		Naseglifi	179	0	Sigerehe HC										Hamlets Under various villages in the ward
		Aguya	154	0	Sigerehe HC										Hamlets Under various villages in the ward
		Afeluga	89	0	Sigerehe HC										Hamlets Under various villages in the ward
		Naseluga	301	0	Sigerehe HC										Hamlets Under various villages in the ward
		Golipaga	236	178	Sigerehe HC	176	32	87	16.06.21	1	1	0	0	NBC (KBK)	Road/Trek
		Lopa-Hiluz	205	0	Sigerehe HC	196	46	97	16.06.21	1	1	0	20	NBC (KBK)	Road/Trek
		Foko	238	0	Sigerehe HC	225	50	106	16.06.21	1	1	0	0	NBC (KBK)	Road/Trek
		Kassa	172	0	Sigerehe HC										Hamlets Under various villages in the ward
		Fimex	189	0	Sigerehe HC	451	89	218	16.06.21	1	1	0	6	NBC (KBK)	Road/Trek
		Mamufalo	186	0	Sigerehe HC	98	20	47	16.06.21	1	1	0	12	NBC (KBK)	Road/Trek
		Neveko	193	0	Sigerehe HC	117	20	59	16.06.21	1	1	0	2	NBC (KBK)	Road/Trek
		Kinipalo	226	0	Sigerehe HC										Hamlets Under various villages in the ward
		Nekemu	130	0	Sigerehe HC										Hamlets Under various villages in the ward
		Efanuga	81	0	Sigerehe HC										Hamlets Under various villages in the ward

LLG	WARD	VILLAGE	Estimated 2021 Population Based On 2000 Census	Estimated 2021 Population Based On 2018	Health Centre	Population Surveyed	House Holds Surveyed	Nets Issued	Date Of Distribution	Villages	Digicel	Bmobile	Houses With Radios	Radio Networks	Comments
		Zoipagele	137	0	Sigerehe HC										Hamlets Under various villages in the ward
		Osayafalo	88	0	Sigerehe HC										Hamlets Under various villages in the ward
		Sinagami	219	0	Sigerehe HC										Hamlets Under various villages in the ward
		Orege		266	Sigerehe HC	220	36	105	16.06.21	1	1	0	0	NBC (KBK)	Road/Trek
		Fagasau		0	Sigerehe HC										Hamlets Under various villages in the ward
		Kafonaga		710	Sigerehe HC	619	138	304	16.06.21	1	1	0	4	NBC (KBK)	Road/Trek
		Napaine		507	Sigerehe HC	489	110	240	16.06.21	1	1	0	11	NBC (KBK)	Road/Trek
		Koritafa		332	Goroka Hos	369	118	191	16.06.21	1	1	1		FM/AM	Road/Trek
12	Nekematigi		3,301	2,321		2,220	407	1,055		7	7	0	28		
		Openaluga	70	0	Sigerehe HC										Hamlets Under various villages in the ward
		Fumitoga	446	0	Sigerehe HC										Hamlets Under various villages in the ward
		Aukepa	266	0	Sigerehe HC										Hamlets Under various villages in the ward
		Lohuto	74	0	Sigerehe HC										Hamlets Under various villages in the ward
		Simiga	420	0	Sigerehe HC										Hamlets Under various villages in the ward
		Glafoto	170	0	Sigerehe HC										Hamlets Under various villages in the ward
		Malepato-Milipaga	193	0	Sigerehe HC										Hamlets Under various villages in the ward
		Dark Valley	61	0	Sigerehe HC										Hamlets Under various villages in the ward
		Gonagatoga	86	0	Sigerehe HC										Hamlets Under various villages in the ward
		Filox	67	0	Sigerehe HC										Hamlets Under various villages in the ward
		Porgera	39	0	Sigerehe HC										Hamlets Under various villages in the ward
		Bifaka	95	0	Sigerehe HC										Hamlets Under various villages in the ward
		Yafakise	32	0	Sigerehe HC										Hamlets Under various villages in the ward
		Lotopilo	32	0	Sigerehe HC										Hamlets Under various villages in the ward
		Saleluga	231	0	Sigerehe HC										Hamlets Under various villages in the ward
		Fokeps	119	0	Sigerehe HC										Hamlets Under various villages in the ward
		Yafigosalo	100	0	Sigerehe HC										Hamlets Under various villages in the ward
		Galeluga	93	0	Sigerehe HC										Hamlets Under various villages in the ward
		Goliyato-Mese	144	0	Sigerehe HC										Hamlets Under various villages in the ward
		Nama Limiga	130	0	Sigerehe HC										Hamlets Under various villages in the ward
		Gipinaro	438	0	Sigerehe HC										Hamlets Under various villages in the ward
		Matausa		186	Sigerehe HC	160	30	76	17.06.21	1	1	0	4	NBC (KBK)	Road/Trek
		Safanota		0	Sigerehe HC	220	47	103	17.06.21	1	1	0	1	NBC (KBK)	Road/Trek
		Nupanota		188	Sigerehe HC	227	30	101	17.06.21	1	1	0	7	NBC (KBK)	Road/Trek
		Fagasau 2		0	Sigerehe HC										Hamlets Under various villages in the ward
		Sitamopo		0	Sigerehe HC										Hamlets Under various villages in the ward
		Mesoka		0	Sigerehe HC										Hamlets Under various villages in the ward
		Maruka		0	Sigerehe HC										Hamlets Under various villages in the ward
		Napamo 1/2		271	Sigerehe HC	241	40	119	17.06.21	1	1	0	5	NBC (KBK)	Road/Trek
		Someyagu		0	Sigerehe HC										Hamlets Under various villages in the ward
		Nevelo		0	Sigerehe HC	88	24	43	17.06.21	1	1	0	4	NBC (KBK)	Road/Trek
		Kogaru 2		298	Sigerehe HC										Hamlets Under various villages in the ward
		Megabo 1		1,222	Sigerehe HC	1,138	213	540	17.06.21	1	1	0	7	NBC (KBK)	Road
		Nogopaka		0	Sigerehe HC										Hamlets Under various villages in the ward
		Safa		156	Sigerehe HC	146	23	73	17.06.21	1	1	0	0	NBC (KBK)	Road/Trek
13	Liorofa		3,751	3,884		1,853	388	988		10	10	0	22		
		Imeyagomolise	376	0	Sigerehe HC										Hamlets Under various villages in the ward
		Fulumegu	131	0	Sigerehe HC										Hamlets Under various villages in the ward
		Somotigise	32	0	Sigerehe HC										Hamlets Under various villages in the ward
		Gogulafato	147	0	Sigerehe HC										Hamlets Under various villages in the ward
		Melmel Pahi	184	0	Sigerehe HC										Hamlets Under various villages in the ward
		Gitanuga	231	0	Sigerehe HC										Hamlets Under various villages in the ward
		Sigenugu	109	0	Sigerehe HC										Hamlets Under various villages in the ward
		Kepenogo	219	0	Sigerehe HC										Hamlets Under various villages in the ward

LLG	WARD	VILLAGE	Estimated 2021 Population Based On 2000 Census	Estimated 2021 Population Based On 2018	Health Centre	Population Surveyed	House Holds Surveyed	Nets Issued	Date Of Distribution	Villages	Digicel	Bmobile	Houses With Radios	Radio Networks	Comments
		Maluka	242	0	Sigerehe HC										Hamlets Under various villages in the ward
		Keyarocks	70	0	Sigerehe HC										Hamlets Under various villages in the ward
		Mimagosagu	33	0	Sigerehe HC										Hamlets Under various villages in the ward
		Mesoka	149	0	Sigerehe HC										Hamlets Under various villages in the ward
		Ginipanagamito	51	0	Sigerehe HC										Hamlets Under various villages in the ward
		Fayanagamito	79	0	Sigerehe HC										Hamlets Under various villages in the ward
		Millii	116	0	Sigerehe HC										Hamlets Under various villages in the ward
		Kesosa-Samahi	53	0	Sigerehe HC										Hamlets Under various villages in the ward
		Gitenuga	77	0	Sigerehe HC										Hamlets Under various villages in the ward
		Miyopaloka	161	0	Sigerehe HC										Hamlets Under various villages in the ward
		Gosavayafaro	60	0	Sigerehe HC										Hamlets Under various villages in the ward
		Saparano	114	0	Sigerehe HC										Hamlets Under various villages in the ward
		Finiko	144	0	Sigerehe HC										Hamlets Under various villages in the ward
		Oleto	63	0	Sigerehe HC										Hamlets Under various villages in the ward
		Otulo	81	0	Sigerehe HC										Hamlets Under various villages in the ward
		Seikohoyagu	674	0	Sigerehe HC										Hamlets Under various villages in the ward
		Amogoka	84	0	Sigerehe HC										Hamlets Under various villages in the ward
		Saslug	75	0	Sigerehe HC										Hamlets Under various villages in the ward
		Mehi		177	Sigerehe HC	227	44	111	16.06.21	1	1	0	5	NBC (KBK)	Trek
		Liorofa 1		788	Sigerehe HC										Non Exsistant
		Kogulari		158	Sigerehe HC	233	50	112	16.06.21	1	1	0	12	NBC (KBK)	Trek
		Liorofa 2		716	Sigerehe HC										Non Exsistant
		Naseruga		171	Sigerehe HC	143	30	77	16.06.21	1	1	0	5	NBC (KBK)	Trek
		Kumai		166	Sigerehe HC	160	16	73	17.06.21	1	1	0	0	NBC (KBK)	Trek
		Yoipagere/Foluntane		318	Sigerehe HC	96	16	50	21.06.21	1	1	0	0	NBC (KBK)	Trek
		Bora		568	Sigerehe HC	256	53	144	21.06.21	1	1	0	0	NBC (KBK)	Trek
		Wara Bum		276	Sigerehe HC	211	50	132	21.06.21	1	1	0	0	NBC (KBK)	Trek
		Fish Pond		206	Sigerehe HC	180	36	97	21.06.21	1	1	0	0	NBC (KBK)	Trek
		Sifente		112	Sigerehe HC	138	28	77	21.06.21	1	1	0	0	NBC (KBK)	Trek
		Camp Saksak/KolWara/Kipuk/Kobogra		229	Sigerehe HC	209	65	115	21.06.21	1	1	0	0	NBC (KBK)	Trek
14	Keiya		5,983	7,352		5,699	1,181	2,831		27	26	24	699		
		Keiya	905	670	Yabiufa HC	617	150	315	22.06.21	1	1	0	126	KBK	30 Minutes
		Meidux	355	299	Yabiufa HC	202	50	103	19.06.21	1	1	1	27	KBK	15 Minutes
		Amaka	487	386	Yabiufa HC	548	100	265	22.06.21	1	1	1	91	KBK	10 Minutes
		Nibiyufa	518	533	Yabiufa HC	516	100	252	18.06.21	1	1	1	59	KBK	20 Minutes
		Giyox	210	214	Yabiufa HC	191	49	96	20.06.21	1	1	1	3	KBK	10 Minutes
		Orohanoga	123	215	Yabiufa HC	279	50	138	18.06.21	1	1	1	44	KBK	25 Minutes
		Lohuveka	126	181	Yabiufa HC	166	36	82	19.06.21	1	1	1	16	KBK	10 Minutes
		Catholic Camp	144	269	Yabiufa HC	250	50	127	19.06.21	1	1	1	18	KBK	10 Minutes
		Muriho	112	0	Yabiufa HC	245	49	119	19.06.21	1	1	1	29	KBK	15 Minutes
		Meme Banis	170	137	Yabiufa HC	137	25	68	19.06.21	1	1	1	20	KBK	15 Minutes
		Haus-Line	151	122	Yabiufa HC	100	29	48	19.06.21	1	1	0	5	KBK	15 Minutes
		Ahumonaro	179	124	Yabiufa HC	177	50	87	19.06.21	1	1	1	34	KBK	15 Minutes
		Wesio	236	512	Yabiufa HC	268	49	134	19.06.21	1	1	1	39	KBK	15 Minutes
		New Camp	151	153	Yabiufa HC	102	21	54	19.06.21	1	1	1	15	KBK	15 Minutes
		Numurapoka	89	169	Yabiufa HC	194	35	95	20.06.21	1	1	1	23	KBK	15 Minutes
		Loutopatoga	147	111	Yabiufa HC	188	50	93	20.06.21	1	1	1	4	KBK	5 Minutes
		Hogosega	110	117	Yabiufa HC	230	48	113	20.06.21	1	1	1	0	KBK	5 Minutes
		Maku Street	75	0	Yabiufa HC	65	15	32	19.06.21	1	1	1	11	KBK	15 Minutes
		Gotobe	112	180	Yabiufa HC	134	17	66	21.06.21	1	1	1	11	KBK	10 Minutes
		Gehatiga	161	203	Yabiufa HC	251	43	123	21.06.21	1	1	1	42	KBK	10 Minutes
		Masiga	170	195	Yabiufa HC	197	49	100	21.06.21	1	1	1	6	KBK	10 Minutes
		Numurapauka	68	0	Yabiufa HC										Non Exsistant
		Yafanapa	42	0	Yabiufa HC										Non Exsistant
		Masumacamp	1,040	379	Yabiufa HC	119	24	61	19.06.21	1	1	1	16	KBK	15 Minutes
		Arikayufa Community School	54	129	Yabiufa HC	98	19	50	20.06.21	1	1	1	1	KBK	10 Minutes
		Yagasie Pltn	49	0	Yabiufa HC	155	27	77	18.06.21	1	1	1	21	KBK	10 Minutes
		Siokat		0	Yabiufa HC	163	35	82	19.06.21	1	1	1	28	KBK	12 Minutes
		Sete Block		197	Yabiufa HC	107	11	51	21.06.21	1	1	1	10	KBK	10 Minutes
		Mambu Club		0	Yabiufa HC										Same in Ward 19
		Ketarobo		1,855	Yabiufa HC					1					Covered in Goroka Hosp
15	Yabiufa		2,445	1,664		1,843	384	904		21	21	6	224		
		Kema No. 1	35	148	Yabiufa HC	48	11	23	23.06.21	1	1	0	6	KBK	3 Hrs / 2 Hrs
		Hoaruku	67	82	Yabiufa HC	79	22	45	21.06.21	1	1	0	12	KBK	5 Minutes
		Etuharo	277	158	Yabiufa HC	134	35	69	21.06.21	1	1	0	20	KBK	Within HC
		Oba Hota	173	99	Yabiufa HC	76	17	40	21.06.21	1	1	0	8	KBK	Within HC
		Hiroretoka	46	80	Yabiufa HC	93	15	45	21.06.21	1	1	0	9	KBK	5 Minutes
		Meniaro	119	41	Yabiufa HC	113	23	53	21.06.21	1	1	0	0	KBK	7 Minutes
		Oheu	98	36	Yabiufa HC	34	9	17	21.06.21	1	1	0	6	KBK	7 Minutes
		Apoveto	305	95	Yabiufa HC	101	23	49	22.06.21	1	1	0	19	KBK	7 Minutes
		Emekhehato	114	129	Yabiufa HC	43	10	21	21.06.21	1	1	0	4	KBK	10 Minutes

LLG	WARD	VILLAGE	Estimated 2021 Population Based On 2000 Census	Estimated 2021 Population Based On 2018	Health Centre	Population Surveyed	House Holds Surveyed	Nets Issued	Date Of Distribution	Villages	Digicel	Bmobile	Houses With Radios	Radio Networks	Comments
		Okaro	86	14	Yabiufa HC	79	17	36	21.06.21	1	1	0	10	KBK	10 Minutes
		Humito	86	104	Yabiufa HC	132	29	64	22.06.21	1	1	1	18	KBK	15 Minutes
		Likene	257	178	Yabiufa HC	226	30	110	21.06.21	1	1	1	20	KBK	Within HC
		Aharero	126	92	Yabiufa HC	53	12	25	21.06.21	1	1	1	11	KBK	5 Minutes
		Lahumika	91	137	Yabiufa HC	68	13	34	21.06.21	1	1	0	8	KBK	5 Minutes
		Oripamoka	77	73	Yabiufa HC	83	19	41	24.06.21	1	1	0	4	KBK	5 Minutes
		Wasaro	100	36	Yabiufa HC	59	11	29	22.06.21	1	1	0	8	KBK	10 Minutes
		Jahuku	121	22	Yabiufa HC	71	12	32	23.06.21	1	1	0	8	KBK	10 Minutes
		Kema No 2	67	104	Yabiufa HC	111	29	55	22.06.21	1	1	0	21	KBK	3 Hrs / 2 Hrs
		Jomaruto	72	24	Yabiufa HC	75	8	37	21.06.21	1	1	1	3	KBK	10 Minutes
		Jonumunaro	96	10	Yabiufa HC	60	17	30	22.06.21	1	1	1	11	KBK	15 Minutes
		Yabiufa Community School	35	0	Yabiufa HC	105	22	49	22.06.21	1	1	1	18	KBK	5 Minutes
16	Wando		5,399	5,138		4,435	889	2,189		37	31	0	314		
		Wara Ram	84	168	Yabiufa HC	205	49	104	17.06.21	1	1	0	16	NBC	3 hrs / 50 Mins
		Fumato	256	248	Yabiufa HC	259	50	127	15.06.21	1	1	0	1	KBK	3 hrs / 1 HR 30 Mins
		Kameku	231	22	Yabiufa HC	133	20	66	14.06.21	1	1	0	0	KBK	1 Hour
		Nunua	170	174	Yabiufa HC	79	14	41	14.06.21	1	1	0	0	KBK	1 Hour 10 Mins
		Korolime	93	130	Yabiufa HC	48	10	24	23.06.21	1	1	0	4	KBK	1 Hour 10 Mins / 2 Hrs
		Kui	250	175	Yabiufa HC	207	34	101	17.06.21	1	1	0	22	NBC	3 hrs / 50 Mins
		Mada Kila	75	90	Yabiufa HC	124	33	62	16.06.21	1	1	0	16	NBC	3 hrs / 50 Mins
		Engenai	63	56	Yabiufa HC	124	32	62	16.06.21	1	1	0	17	KBK	3 hrs / 50 Mins
		Fumito	303	218	Yabiufa HC	369	50	175	15.06.21	1	1	0	14	KBK	3 hrs 30 Mins / 2 Hours
		Aketo	193	282	Yabiufa HC	45	8	23	15.06.21	1	1	0	8	KBK	3 hrs 30 Mins / 2 Hours
		Foku	140	253	Yabiufa HC	234	45	117	16.06.21	1	1	0	20	KBK	1 Hour 10 Mins / 2 Hrs
		Seseparo	161	36	Yabiufa HC	104	25	50	23.06.21	1	1	0	14	KBK	1 Hour 10 Mins / 2 Hrs
		Iyapona	303	177	Yabiufa HC	213	38	103	15.06.21	1	0	0	0	KBK	1 Hour 10 Mins / 2 Hrs
		Hibo	238	173	Yabiufa HC	64	11	33	14.06.21	1	1	0	1	KBK	1 Hour 10 Mins
		Rot Kona	126	280	Yabiufa HC	69	12	34	14.06.21	1	1	0	1	KBK	1 Hour 10 Mins
		Logefaro	151	70	Yabiufa HC	80	22	43	23.06.21	1	1	0	11	KBK	1 Hour 10 Mins / 2 Hrs
		Kolobalo	215	73	Yabiufa HC	97	22	45	23.06.21	1	1	0	4	KBK	10 Minutes / 1 Hour
		Mikalutaro	250	100	Yabiufa HC	159	32	76	19.06.21	1	0	0	0	KBK	3 hrs 30 Mins / 2 Hours
		Lodopulo	81	0	Yabiufa HC	40	11	22	19.06.21	1	0	0	0	KBK	10 Minutes / 1 Hour
		Kiara Fumito	184	114	Yabiufa HC	61	13	29	16.06.21	1	1	0	9	KBK	1 Hour 10 Mins / 2 Hrs
		Orunua	182	162	Yabiufa HC	114	27	57	16.06.21	1	1	0	18	KBK	3 hrs 30 Mins / 2 Hours
		Lodopulo	121	156	Yabiufa HC	80	15	40	16.06.21	1	1	0	6	KBK	3 hrs 30 Mins / 2 Hours
		Keta	476	200	Yabiufa HC	180	36	88	16.06.21	1	1	0	26	KBK	3 hrs 30 Mins / 2 Hours
		Kuwaro	236	181	Yabiufa HC	206	37	102	16.06.21	1	1	0	21	KBK	3 hrs 30 Mins / 2 Hours
		Mariku	257	207	Yabiufa HC	120	28	58	16.06.21	1	1	0	12	KBK	3 hrs 30 Mins / 2 Hours
		Moiya	217	236	Yabiufa HC	106	17	52	16.06.21	1	1	0	14	KBK	3 hrs 30 Mins / 2 Hours
		Asinoro	131	78	Yabiufa HC	87	22	44	19.06.21	1	1	0	0	KBK	5 Minutes / 50 Minutes
		Namiro	103	64	Yabiufa HC	67	16	32	14.06.21	1	1	0	0	KBK	5 Minutes / 40 Minutes
		Evaku	109	145	Yabiufa HC	62	15	31	14.06.21	1	1	0	0	KBK	1 Hour 10 Mins / 1 Hr
		Mipopo		84	Yabiufa HC	214	41	100	16.06.21	1	1	0	34	KBK	1 Hour 10 Mins / 2 Hrs
		Atrigu Comm.Sch.		0	Yabiufa HC	18	7	11	15.06.21	1	1	0	0	KBK	2 Hour 10 Mins
		Lomonoro		142	Yabiufa HC	148	33	74	16.06.21	1	1	0	24	KBK	3 hrs 30 Mins / 2 Hours
		Fonmuna		93	Yabiufa HC	79	20	40	16.06.21	1	1	0	1	KBK	3 hrs 30 Mins / 2 Hours
		Namisiaro		143	Yabiufa HC	68	14	34	16.06.21	1	1	0	0	KBK	5 Minutes / 40 Minutes
		Puraro		168	Yabiufa HC	84	13	43	14.06.21	1	0	0	0	KBK	1 Hour
		Arereke		33	Yabiufa HC	24	5	12	14.06.21	1	0	0	0	KBK	1 Hr 10 Minutes / 5 Trek
		Atrigu		208	Yabiufa HC	64	12	34	14.06.21	1	0	0	0	KBK	1 Hour
17	Orumba		1,470	956		775	209	375		11	11	0	101		
		Kofea	182	0	Yabiufa HC	61	16	32	18.06.21	1	1	0	8	KBK	40 Minutes / 20 Minuts
		Kindere Kaku	261	399	Yabiufa HC	118	42	56	18.06.21	1	1	0	25	KBK	35 Minuts
		Kiamu	81	0	Yabiufa HC	72	14	33	18.06.21	1	1	0	10	KBK	36 Minutes
		Nuku	163	180	Yabiufa HC	107	31	54	18.06.21	1	1	0	10	KBK	40 Minutes
		Ero	116	0	Yabiufa HC	54	13	29	18.06.21	1	1	0	1	KBK	40 Minutes / 30 Minutes
		Ribanumuwaro	74	96	Yabiufa HC	31	7	15	18.06.21	1	1	0	3	KBK	40 Minutes / 50 Minutes
		Komamo	123	0	Yabiufa HC	67	17	30	18.06.21	1	1	0	10	KBK	36 Minutes
		Fokiapato	75	0	Yabiufa HC	61	21	31	18.06.21	1	1	0	14	KBK	38 Minutes
		Oporo	110	144	Yabiufa HC	49	14	22	18.06.21	1	1	0	5	KBK	45 Minutes
		Landau	124	0	Yabiufa HC	93	20	43	18.06.21	1	1	0	7	KBK	48 Minutes
		Kabaka	102	0	Yabiufa HC	62	14	30	18.06.21	1	1	0	8	KBK	1 Hour
		Luwamo	61	0	Yabiufa HC										Non Existant
		Arango Norome		137	Yabiufa HC										Non Existant
18	Orumba-Foe		1,526	1,394		1,498	317	730		17	17	0	170		
		Fanaruto	131	179	Yabiufa HC	90	20	43	15.06.21	1	1	0	2	KBK FM	1 Hour
		Afonoha	112	0	Yabiufa HC	48	9	24	16.06.21	1	1	0	5	KBK FM	2 Hours 30 Mins / 1 Hr
		Hondo Hamu	121	107	Yabiufa HC	104	26	56	15.06.21	1	1	0	14	KBK FM	2 Hours 30 Mins / 2 Hrs
		Aurapo Rilo	67	0	Yabiufa HC	138	33	67	15.06.21	1	1	0	21	KBK FM	1 Hour
		Wamonafutuaro	107	173	Yabiufa HC	46	7	23	15.06.21	1	1	0	4	KBK FM	1 Hour
		Salam Bato	70	213	Yabiufa HC	64	14	32	15.06.21	1	1	0	11	KBK FM	1 Hour
		Kurawa	88	0	Yabiufa HC	61	10	29	15.06.21	1	1	0	5	KBK FM	1 Hour
		Hutamonau	86	55	Yabiufa HC	211	22	98	15.06.21	1	1	0	16	KBK FM	1 Hour
		Angotiri	75	110	Yabiufa HC	62	14	30	16.06.21	1	1	0	5	KBK FM	2 Hours 30 Mins / 35 Mins
		Leulo	96	0	Yabiufa HC	102	21	50	16.06.21	1	1	0	7	KBK FM	2 Hrs 30 Mins / 30 Miutes
		Fieme	44	0	Yabiufa HC	72	11	35	16.06.21	1	1	0	6	KBK FM	2 Hours 30 Mins / 25 Mins
		Marupamo	193	129	Yabiufa HC	98	22	47	16.06.21	1	1	0	11	KBK FM	2 Hours 30 Mins / 25 Mins
		Mariku	184	119	Yabiufa HC	68	22	35	16.06.21	1	1	0	9	KBK FM	2 Hrs 30 Mins / 30 Miutes
		Erefona	67	62	Yabiufa HC	90	28	46	16.06.21	1	1	0	18	KBK FM	2 Hrs 30 Mins / 50 Miutes
		Here Faruto	88	0	Yabiufa HC	58	15	29	15.06.21	1	1	0	9	KBK FM	1 Hour 10 Minutes
		Lafiufa		0	Yabiufa HC	69	12	32	15.06.21	1	1	0	10	KBK FM	1 Hour
		Lipinaraku		248	Yabiufa HC	117	31	54	16.06.21	1	1	0	17	KBK FM	2 Hours 30 Minutes
19	Yauna-Koko		1,355	2,469		1,327	253	616		12	11	1	182		
		Numpogo	42	409	Yabiufa HC	119	17	56	17.06.21	1	1	0	13	KBK	40 Minutes
		Koriaku	140	592	Yabiufa HC	171	29	79	17.06.21	1	1	0	14	KBK	40 Minutes

LLG	WARD	VILLAGE	Estimated 2021 Population Based On 2000 Census	Estimated 2021 Population Based On 2018	Health Centre	Population Surveyed	House Holds Surveyed	Nets Issued	Date Of Distribution	Villages	Digicel	Bmobile	Houses With Radios	Radio Networks	Comments
		Namause-Namaugere	116	0	Yabiufa HC	72	16	33	17.06.21	1	1	0	11	KBK	20 Minutes
		Lamoka-Asarovfa	154	466	Yabiufa HC	136	30	59	17.06.21	1	1	0	22	KBK	35 Minutes
		Kofouka	42	0	Yabiufa HC	120	23	55	17.06.21	1	1	0	16	KBK	40 Minutes
		Riamedoka-Monogupa	208	369	Yabiufa HC	162	25	77	17.06.21	1	1	0	17	KBK	40 Minutes
		Mambu Club	86	153	Yabiufa HC	134	31	64	19.06.21	1	1	0	29	KBK	15 Minutes
		Okaniguro	32	127	Yabiufa HC	42	9	20	17.06.21	1	1	0	6	KBK	25 Minutes
		Koko-Namaugere	84	97	Yabiufa HC	102	20	49	19.06.21	1	0	0	17	KBK	30 Minutes
		Fanayufa	126	110	Yabiufa HC	102	24	46	20.06.21	1	1	1	20	KBK	45 Minutes
		Lataro-Kabouna	203	145	Yabiufa HC	139	23	64	17.06.21	1	1	0	11	KBK	45 Minutes
		Koko Community School	123	0	Yabiufa HC	28	6	14	18.06.21	1	1	0	6	KBK	30 Minutes
20	Conner	Bena	5,015	5,643		5,558	1,634	2,886		39	38	14	791		
		Kintinu	224	1,239	Goroka Hos	452	181	263	19.06.21	1	1	1	56	FM/AM	Road
		Kurumute	119	0	Goroka Hos	96	23	46	18.06.21	1	1	1	11	FM/AM	Road
		Nigikona	165	0	Goroka Hos	96	25	48	19.06.21	1	1	1	12	FM/AM	Road
		Ketuyaro	261	0	Goroka Hos	143	27	70	19.06.21	1	1	1	19	FM/AM	Road
		Kaiyufa	240	0	Goroka Hos	197	43	101	20.06.21	1	1	0	2	FM/AM	Road
		Sokei	156	657	Goroka Hos	311	79	150	19.06.21	1	1	0	31	FM/AM	Road
		Jamaica	51	0	Goroka Hos	109	24	55	19.06.21	1	1	1	18	FM/AM	Road
		Natupi	205	0	Goroka Hos	201	97	127	19.06.21	1	1	0	32	FM/AM	Road
		Avicks	123	0	Goroka Hos	150	48	82	19.06.21	1	1	0	16	FM/AM	Road
		Siguzato	144	0	Goroka Hos	177	41	86	18.06.21	1	1	1	22	FM/AM	Road
		Keketo	84	0	Goroka Hos	126	33	63	19.06.21	1	1	0	18	FM/AM	Road
		Sumifare	219	0	Goroka Hos	128	32	58	19.06.21	1	1	0	32	FM/AM	Road
		Setafi	292	0	Goroka Hos	205	50	103	18.06.21	1	1	0	20	FM/AM	Road
		Deti-Wara	109	0	Goroka Hos	140	34	70	18.06.21	1	1	1	14	FM/AM	Road
		Sivirete	180	0	Goroka Hos	207	63	104	19.06.21	1	1	1	28	FM/AM	Road
		Notomate	291	0	Goroka Hos	351	100	167	18.06.21	1	1	1	40	FM/AM	Road
		Mokoloe	152	0	Goroka Hos					1				FM/AM	Road
		Taulo	82	0	Goroka Hos	109	40	64	21.06.21	1	1	0	11	FM/AM	Road
		Lopefa-Gosa	140	0	Goroka Hos	134	37	72	18.06.21	1	1	0	14	FM/AM	Road
		New Ireland	54	0	Goroka Hos	120	36	61	18.06.21	1	1	0	12	FM/AM	Road
		Fleroma	84	0	Goroka Hos	85	23	51	18.06.21	1	1	0	13	FM/AM	Road
		Ketu	35	0	Goroka Hos	100	41	58	22.06.21	1	1	0	22	FM/AM	Road
		Fufare	266	0	Goroka Hos	160	50	79	22.06.21	1	1	0	41	FM/AM	Road
		Kimox	51	0	Goroka Hos	49	21	24	19.06.21	1	1	1	16	FM/AM	Road
		Herofare	228	0	Goroka Hos	178	47	89	21.06.21	1	1	1	32	FM/AM	Road
		Hejamo	47	0	Goroka Hos	83	23	46	21.06.21	1	1	1	22	FM/AM	Road
		Citiginapa	109	0	Goroka Hos	99	26	50	18.06.21	1	1	0	15	FM/AM	Road
		Bihekejevote	70	0	Goroka Hos	111	34	62	18.06.21	1	1	0	16	FM/AM	Road
		Fagahitare	68	0	Goroka Hos	73	17	36	18.06.21	1	1	0	13	FM/AM	Road
		Finekupo	70	0	Goroka Hos	83	34	47	19.06.21	1	1	0	3	FM/AM	Road
		Homagu	184	0	Goroka Hos	150	50	80	19.06.21	1	1	1	37	FM/AM	Road
		Apete	88	0	Goroka Hos	100	22	35	19.06.21	1	1	1	14	FM/AM	Road
		Kavemu	114	0	Goroka Hos	155	28	79	20.06.21	1	1	0	17	FM/AM	Road
		Karisato	21	0	Goroka Hos	96	25	48	20.06.21	1	1	0	16	FM/AM	Road
		Sareparo	109	0	Goroka Hos	155	45	85	20.06.21	1	1	0	27	FM/AM	Road
		Lokiyae	46	0	Goroka Hos	82	23	43	20.06.21	1	1	0	14	FM/AM	Road
		Efakege	93	0	Goroka Hos	102	36	57	20.06.21	1	1	0	23	FM/AM	Road
		Manikon		NEW	Goroka Hos	143	50	76	19.06.21	1	1	0	22	FM/AM	Road
		Kopafo Community School	46	0	Goroka Hos	102	26	51	21.06.21	1	1	0	20	FM/AM	Road
		Lampo		901	Goroka Hos										Main Village name in Ward 20
		Kopafo		1,410	Goroka Hos										Main Village name in Ward 20
		Kafetugu		1,435	Goroka Hos										Main Village name in Ward 20