

ROTARIANS AGAINST MALARIA



LONG LASTING INSECTICIDAL NET DISTRIBUTION REPORT

EAST NEW BRITAIN PROVINCE Gazelle, Kokopo, Pomio and Rabaul Districts

Carried Out In Conjunction With The Provincial Government And Church
Health Services Of East New Britain Province

With Support From The Global Fund

10th November 2022 to 28th April 2023



Table of Contents

Executive Summary	3
Background.....	4
Schedule	7
Methodology.....	7
Results	11
Conclusions.....	14
Acknowledgements	15
Appendix One – History Of LLIN Distribution In PNG	15
Appendix Two – Malaria In East New Britain Province Compared With Other Provinces.....	21
Appendix Three - Malaria By Altitude	23
Appendix Four – Other Photographs	24

Annex One	Detailed Distribution Data For Gazelle District
Annex Two	Detailed Distribution Data For Kokopo District
Annex Three	Detailed Distribution Data For Pomio District
Annex Four	Detailed Distribution Data For Rabaul District

Executive Summary

East New Britain Province lies north east of the mainland Papua New Guinea (PNG) and is one of two provinces on New Britain Island comprised of a one large island together with the Duke of York and Watom Islands. While there are some mountains that rise above 2000m, the majority of the population (93% live on the coastal areas below 400m where malaria is endemic with about 4% of the population living inland below 800m. Another 3% live at higher altitudes 800-1600m. However, for practical purposes, the whole population of East New Britain live in malaria endemic areas and are at risk to malaria. Over 80% of the island are accessible by road with about 9% accessible only boat with about 7% only finally being reached by trekking, particularly in Pomio District. One area, Muela, is more accessible from West New Britain and distribution took place from there.

The family level survey and distribution of Long-Lasting Insecticidal Nets (LLINs) was carried out in East New Britain between 10th November to 28th April 2023. The distribution took four months as the LLIN distribution was done in several stages and for Pomio, the program only finished Muela from West New Britain in April when most of this district had been completed in February. However, it should be noted that within this period, the office was closed for one month where everyone was sent home for the Christmas break. The officers returned in early February of 2023 and continued from where they left off.

Table One shows the estimated population to be covered by the program together with the actual population found along with the number of LLINs distributed by district. In total, 195,478 LLINs were distributed to a population of 382,156 people. This resulted in distribution of 51.2 nets for every 100 people in the province.

TABLE ONE – Population And Nets Distributed

District	Population from 2000 Census	Population Of Targeted Areas In 2020	Total Estimated Population 2023	Population Surveyed 2023	House Holds Surveyed 2023	Nets Issued 2023	Nets Distributed Per 100 People
Gazelle	89,776	146,456	159,106	151,744	32,729	77,170	50.9
Kokopo	58,345	97,790	106,237	97,127	19,480	49,911	51.4
Pomio	44,964	80,668	87,636	86,603	16,663	43,269	50.0
Rabaul	27,048	43,424	47,175	46,682	10,487	25,128	53.8
Totals	220,133	368,338	400,153	382,156	79,359	195,478	51.2

A further 299 LLINs were donated to health centres for use for antenatal nets or for use over beds in the health facility. Donations only occurred where there were a few loose nets left or it was difficult to return the nets to stores in Kokopo.

The overall operational cost of the programme was K575,824.39 (Approximately US\$ 159,950) resulting in a cost of about 2.95 Kina or US\$0.85 per net delivered. This was about 4% over the anticipated budget with extra costs mainly a result of car hire. However, overall, distribution costs of under US\$1 per nets delivered should be considered a good result.

Other than this, overall, the distribution went well in East New Britain Province with excellent collaboration from provincial and district health authorities which resulted in all targeted communities being eventually reached and all household receiving nets.

Feedback from partners and communities suggest they were happy with the methodology used as the process appeared transparent to all concerned. However, as always, there were a few

families who complained that they did not receive enough nets but for the most part it is believed that this was a result of families not fully understanding the allocation system used.

Global Fund donated, supplied and covered all distribution costs for all the nets for East New Britain Province. The nets distributed in East New Britain Province were Magnet nets which came from India. This is the first time this type of net has been used in Papua New Guinea and RAM hopes that these are better quality LLINs than those distributed in the last few years.

The history of LLIN distribution in PNG and East New Britain Province is discussed in Appendix One and the malaria situation and stratification of malaria in East New Britain Province are discussed in Appendix Two and Appendix Three. Historically it can be said that LLINs have had a tremendous impact on malaria in Papua New Guinea but recent distributions in lower lying provinces have not resulted in decreased malaria except in the highlands of PNG where malaria appears to have been practically eliminated. We hope that these nets are sufficient to keep malaria at bay in all these areas of East New Britain for another three years.



Fig.1 – Initial Planning Meetings With Provincial Health Team – With the CEO (Left) And Public Health Director (Right)

Background

Rotarians Against Malaria (RAM) is a nationally based organisation which was formed in 1997 by the Port Moresby Rotary Club in recognition of the tremendous burden that malaria imposes on the people of PNG.

RAM has an organizational mandate to work in malaria control and the distribution of LLINs in Papua New Guinea and has been working for many years with the National Department of Health (NDOH) and other partners including multilateral and bilateral agencies such as UNICEF and WHO (World Health Organisation), NGOs (None Governmental Organisations) and church groups. (See Appendix One for full history of LLIN Distribution)

Since 2010, RAM has been coordinating the distribution of nets to all districts and provinces on a three-year recurrent cycle. This effectively means that RAM visits every targeted village in PNG every three years. RAM has been funded by the Global Fund since 2009 and from 2017 to 2020 also from Against Malaria Foundation (AMF) which supplied PNG with the majority of its nets in 2017 and from 2018 onwards to all areas below 1600m only where most of the malaria transmission can be found. During the period 2017 to 2020, the Global Fund resources were therefore mainly used to fund the LLIN distribution costs and other relevant administration costs. However, in 2020, PNG was also lucky to receive a donation of net from the Chinese Government and these were used for all areas between 1600-2000m of altitude.

It should also be noted that since 2015, the National Malaria Control Program no longer distributes nets in areas above 2000m as these altitudes are now considered too cold for malaria transmission to occur. The situation has changed in 2021. AMF no longer is a donor to PNG and all costs have now reverted to Global Fund. With this change, RAM started to have difficulties covering areas from 1600-2000m but we are very fortunate in that the Global Fund allowed saving from 2020 to be used to procure nets for 2021 for this altitude. At present, the funding situation for LLIN distribution to altitudes of 1600-2000 after 2022 has stopped and it appears at this moment that all LLIN distributions in the future will be limited to below 1600m only.

Generally, LLINs have been distributed to household level throughout the country but when shortage of funds occurred, different strategies of distribution have been used as mentioned above.

PNG can be roughly divided into five epidemiological zones.

- a) Areas which lie above 2000m in altitude which no longer receive LLINs as malaria transmission is not considered likely at these altitudes.
- b) Low lying areas of the country up to 1200m which have stable malaria endemicity and often have poor access to health continue to have household distributions.
- c) Areas from 1200 to 1600m which are generally considered to be of low transmission potential but traditionally have had occasional malaria epidemics due to poor immunity and changing weather conditions. LLIN distribution continue in these settings.
- d) Highlands regions between 1600 to 2000m in altitude such as Mount Hagen which have low malaria endemicity and generally easy access to health services. These are low priority areas and when funding is not available are left out. However, up until 2021, these areas have been covered. From 2015 to 2016, these areas received nets for Under Five children only, and since 2017 up until 2021, RAM has managed to find alternative sources to cover these areas. For example, in 2020, nets for these areas were sourced from a donation of the Chinese Government and in other areas from the Global Fund. Fortunately, there was sufficient funds to cover these areas in 2021. Sadly, from 2022 there are no funds to cover these areas nor likely to be for the foreseeable future.
- e) In urban and peri-urban areas such as Port Moresby which are low lying areas with easy access to health, nets will not be distributed during funding constraints. Nets to these areas will be supplied through the private sector. Similarly, due to funding constraints in 2015, Lae City had Under Five Campaign LLINs only.



Fig.2 – The RAM Team Meeting With Provincial Health Staff At The Start Of The Program

As a result of this stratification and when funds had been reduced such as at the end of 2014, areas above 2000m no longer received nets and areas from 1600 to 2000m only received under five campaigns in 2015 and 2016. However, fortunately, due to the LLIN donation from the Against Malaria Foundation (AMF) in 2017, all areas received household distribution of nets except areas above 2000m, and some urban areas such as NCD, Goroka, Mount Hagen and Mendi. After 2018, AMF only donated nets to areas below 1600m but the country has been lucky to find funding to fill this gap of between (1600-2000m) in 2019, 2020 and for 2021 through donations from the Global Fund (2018-2021) and the Chinese Government (2020). However, funding for areas between 1600-2000 metres has now stopped as the Global Fund allocations are not presently enough to cover these areas above 1600m.

One of the conditions of the AMF donation is that RAM would strengthen the way in which surveys are carried out. These new innovative processes are described in the Methodology Section. These methodologies are now being carried out since the beginning of 2017. The major change to the survey methodology suggested by AMF is that previously a village meeting was called after a survey was carried out where names of family members were read out to ensure that all households had been surveyed. Instead of this process, a summary of every village surveyed is posted for 24 hours in a public place so that villages can ensure that all their family members have been included in the survey. As a further verification process, members of RAM and local health staff team carry out random house surveys of 6% of households in every village to ensure that the survey process has been carried out correctly.

For household LLIN distributions, regardless of where they are carried out, they must include a survey and a distribution phase though implementation methods may considerably vary depending on specific circumstances. RAM's approach has been to concentrate on programme quality thus RAM develop methodologies that ensure that all recipients in an area actually receive nets and that this can be reported accurately.



Fig.3 – Microplanning At Rauspena (Right) With Microplanning Map (Right)

The other major change to the original PNG programme of 2004 to 2009 carried out by the NDOH is that nets are allocated to families on a needs basis rather than simply the number of people in the family. Data analysis of National Capital District (NCD) data has shown that this gives a ratio of nets needed to be about 47 for every 100 people. In the previous LLINs distribution of Round-3 in 2006 to 2010, nets were allocated at a rate of one net to every 2.5 people. With the programme only receiving 80% of LLIN needs, and most provinces distributing for example two nets to families of three, in practically every province, nets ran out before the end of the distribution. The RAM programme makes all attempts to assure that this distribution anomaly does not happen by collecting all population information at the beginning of the program and then allocate the nets based on family needs. This strategy is practiced to ensure that all families receive nets throughout any given province. The only scenario where

survey and net distribution may be done simultaneously in very remote locations where it is not practically possible to return a second time to a location. This is particularly the case in remote villages which can only be reached by boat or very long treks and it is costly and impractical to return to the villages for a second time.

In terms of coordination, RAM officers are allocated to specific LLGs or health centres where they coordinate the programme together with local health staff. In this capacity, RAM officers act as facilitators in terms of technical guidance to district health teams in each LLG as well as acting as financial officers and assuring quality control of activities taking place.

Schedule

TABLE TWO
General Timetable Of Activities In East New Britain Province

District	Survey		Distribution	
	Start	Finish	Start	Finish
Gazelle	13.11.22	06.12.22	31.01.23	23.03.23
Kokopo	15.03.23	13.04.23	20.03.23	27.04.23
Pomio	30.01.23	11.04.23	04.02.23	28.04.23
Rabaul	26.03.23	11.04.23	05.04.23	20.04.23

Referring to Table Two, it can be seen that the main distribution in East New Britain Province started on 13 November 2022 in Gazelle District with survey being completed before the New Year holidays. The team returned to East New Britain at the end of January where most team member went to carry out distribution in Pomio before beginning Kokopo and Rabaul. Most of Pomio was completed in February except for villages in Muela which were reached later from West New Britain.

Methodology

Prior to planning and implementation, a master list of all villages of East New Britain Province was drawn up using data from the 2000 Census and the last RAM survey of 2019 in East New Britain Province. Villages in the list were organised by LLG and Ward. In this master list, the estimated population for 2020 for each village was estimated and recorded in two ways. Firstly, the population of each village is estimated using population figures from the 2000 Census and the estimated annual growth rate for East New Britain Province and then secondly, by taking the population surveyed in 2017 and 2018 and applying the annual growth rate to each village. In addition to this, based on altitude maps, all villages in highlands provinces are categorised and colour coded by altitude zones of below 1200m, 1200 to 1600 metres, 1600 to 2000 metres and lastly those villages above 2000 metres. Only those villages below 1600 metres will receive nets.

In all areas, Health Centres form the hub from which distribution takes place to the respective villages in each health centre’s catchment area. Therefore, with the planning data at hand, RAM staff work together with the Provincial Health Office to allocate every village to its nearest health centre (government or Church Based) and outlines how each village is reached from each health centre. From this it is possible to create a budget, estimate how many nets are needed to be sent to each health centre and work out any other logistic considerations such as use of airplanes or boats to deliver nets to some remote areas.

Once all logistical needs are calculated and nets delivered to the province or district, a RAM team will travel to the province. Once they are in the province, RAM officers are allocated to work with each health centre which becomes the centre of operations for that area.

With the arrival of RAM officers, each health facility identifies health staff members or non-health community volunteers to be involved with the programme. If local health staff are selected, then they are referred to as District Health Team (DHT) but if a non-health staff is selected then they are termed as a Team Leader. Both DHTs and Team Leaders are responsible for the survey and distribution of nets. Each DHT and Team Leader works only in the area in which the health facility is based.

Before any activities take place, RAM officers are expected to work with health staff and other team leaders to make detailed plans (micro-planning) of their activities for training, survey, verification and distribution of nets. This process involves making maps of the area, deciding how many teams are needed, and then making detailed work plans for each of the team members. This process also involves verifying that no villages have been left out of the census list and that the whole area is covered.

Also prior to field activities in any given LLG or health centre, a social awareness campaign was carried out in all villages informing villagers of the upcoming survey and distribution. This was also used as an opportunity for RAM officers to become familiar with each area. During this process, key malaria messages were also discussed with villagers such as the need to use LLINs every night.

During the social awareness campaign, a daylong training meeting is normally held at each health facility for all DHT members in that area who jointly carry out the micro-planning exercise. These training and micro-planning sessions as well as all other activities associated with the programme are coordinated by RAM project officers together with health counterparts at provincial and district levels. RAM officers also have the responsibility to ensure the LLINs operation is kept in line with the original budget.



Fig.4 – Microplanning Meeting At Rabaul (Left) And Uvol (Right)

Survey

The survey was carried out in the following way.

- 1) When arriving at a village and before starting the census process, a meeting was held with village elders explaining the process.
- 2) If village elders have an up-to-date list of all village occupants, the team would use this list to compile a census but still visit every household to confirm this information.

- 3) Where a village is small, e.g., less than 30 families, team members may carry out the census by themselves.
- 4) Where villages are large, village volunteers were identified with the assistance of the village chiefs, elders, health staff and councillors. One volunteer was chosen for each group of about 50 families with volunteers chosen by natural divisions in the village e.g., clans where one volunteer would make a list of only one clan. These volunteers were trained to carry out the survey by actually surveying houses with the team leaders supervising and assessing the recording. Once the team leader was confident that the volunteers knew the survey methodology, they were left to continue with the household survey with survey teams returning within an agreed period to verify the work of the survey volunteers, collect survey books and also to pay the survey volunteer, provided that the work was carried out correctly. The training of volunteers may occur in groups or individually depending on access to the village and its proximity to other villages.
- 5) For each household surveyed, all family members who normally reside at the household for a minimum of nine months were recorded by Name, Age, Sex and Relationship to head of household. All names and other information were recorded in the survey book with one survey form being used for each household.
- 6) After surveying a household, a white copy of the census form was given to the head of household or most senior person present in the household.
- 7) Where a whole household was absent, information was taken from the neighbours and the white survey form left with them.
- 8) In all cases, after the census/list was finished, all the information about the households and number of household members is entered into a summary sheet. This list is then hung in a public place where all villages can verify that the right number of family members for each household has been recorded and that all families have been included in the survey. After the list has been in a public place for 24 hours, then the volunteer requests for the RAM officer and or DHT to visit the village.
- 9) RAM officers and DHTs must visit three households randomly from each survey book (6%) and verify that the survey has been carried out correctly. Only when this has been done, then the volunteer can be paid.



Fig.5 – Training Of Village Volunteers In Bitopaka (Left) And Butuwin (Right)

- 10) If a village was surveyed by more than one volunteer, then volunteers were asked to work together so that lists can be hung together and the village volunteers can be verified at the same time. This process also ensures that households do not appear on more than one list. After this process, both the volunteers and the village elders sign a form to verify that this was done.
- 11) All village volunteers received a standard payment of 20 kina a day. Experience has shown that volunteers can usually only survey about 25 households a day, so for the most part, they would receive up to two days' allowance to complete a survey book (50 households).

12) All volunteers were also given a small training manual. Contained in this training manual are key health education messages about malaria which volunteers are expected to discuss with households. This perhaps is the only project in PNG that is able to reach down to potentially every household in the country.

To aid with the survey, the master plan with names of all census units in all the wards in the district had been printed out and given to all the DHTs and team leaders. This document also provides the projected population per census unit as well as other information which might be useful to the area concerned.

After collecting survey data from each village, the information is immediately compared with the data on the master sheet. Where the surveyed population is very different from the projected population, the project staff make enquiries into the reasons for these discrepancies.

Following the survey, all data was entered into a computer where possible or entered into a master sheet of the area concerned. For each village, nets were allocated to each family on a needs basis and this is also entered into the computer or master sheet. This process ensured that all villages received nets and that there would be no shortfalls.

The needs basis in PNG is based on the assumption that children under the age of six sleep with their parents, after which boys and girls are grouped separately from their parents. Nets are also allocated based on the number of children in the house, their ages, and whether there are other dependents living in the households such as grandparents. A full description of the allocation system can be obtained from RAM officers but suffice to say a family of four could receive between one to four nets depending on the sex and age of family members.

Nets are allocated to each LLG based on assumed populations of each LLG and it was important prior to the distribution to ensure that when allocations had been carried out to families and villages that there were enough nets available to cover each and every family.

Distribution

There was no official launch for the LLINs distribution in East New Britain Province. However, prior to distribution there was a social awareness phase where the project teams informed communities about the arrival of the distribution teams, especially those accessible by road.

The LLINs were then distributed to teams depending on the needs of each village. The LLINs were then distributed by village or wards depending on whether villages were close together. In this latter case, a central location was identified in the ward and then distribution of nets was carried out. In terms of distribution sites, villages were organised in different ways to make the flow of nets easy and effective. However, the actual organisation depended on each team and the structure of the various groups receiving nets.

All net packaging was opened at distribution site with a district code printed on each net e.g., ENB23 meaning East New Britain Province 2023. This code is added to identify nets to assist in future monitoring exercises as well as discouraging householders from selling the nets on the open market.

Some examples of the process used to control the crowd includes;

- Arranging the people according to the serial numbers in the survey books e.g., 72001 - 72050 and then calling the names and the serial numbers.
- Call the names of the owners of the households, collect the white copy and give the nets.
- Wait for everyone to come to the distribution site, collect all the white copies and sort the copies with the pink copies. Call the names on the white copies and give the nets.

Some of the following control methods were used.

- Everyone who presented with a white copy was given LLINs at the distribution site with LLINs only given to the owner of the house or a member of the house whose name is written on the back of the survey form.
- Those people who lost the white receipts were left to the end of each distribution, with nets only being issued if the name of the person collecting the nets was found on the back of the pink copies.
- For those families who were absent at the time of distribution, their names were written in a form – MOSQUITO NETS HELD IN TRUST BY VILLAGE CHIEFS FORM and the nets allocated to missing families were given to chiefs or any person entrusted by the community with the forms for these families to collect their LLINs later.
- Householders are now being asked to make a thumb print as proof of delivery of nets to a household. The Global Fund had formally asked that householders should sign for delivery of nets. This was considered problematic as many householders are illiterate and even where householders can write, this process takes a long time in what is often a very chaotic and charged environment where speed is of the essence.

It should also be noted that surveys and distributions took place at more or less the same time in some remote places of East New Britain Province. This is particularly true for mountainous villages or villages at the end of rivers which might take several hours or days to reach. In these instances, estimations based on the 2000 Census data and local knowledge used to pre-allocate nets. Teams were then dispatched to these areas with nets. On arrival in these remote places, surveys took place and were immediately followed by a distribution based on the survey results.

Other details

In the case of East New Britain Province, all LLINs were ultimately delivered to Lae by ship from India in eighteen containers. These nets are known as Magnet and are light blue in colour and made from polyethylene. All nets arriving in Lae were custom cleared by Express Freight Management and then stored primarily in their premises in Lae. After this, containers were moved to East New Britain by Consort Shipping and then stored in Rabaul District Office (2 containers), Gazelle District Office (9 containers) and the rest of the containers in PHA yard and Kokopo Hospital for nets for Kokopo and Pomio Districts. From the containers the nets were moved to the various health facilities in the province by road, boat or by dinghy.

Results

Table Three shows the LLIN distribution data by district and Table Four by Local Level Government (LLG). These tables give the actual population surveyed together with the number of LLINs distributed by district. In total, 195,478 LLINs were distributed to a population of 382,156 people in the four districts. This resulted in distribution of 51.2 nets for every 100 people in the province.

Referring to Table Three and Table Four, it can be seen that the overall population growth rate is only 1.25% which is very low. Most of this low growth rate is seen in Gazelle and particularly in Kokopo. While there have been tribal fights in the Raluana LLG area, it seems unlikely that this is the reason for the reduced observed growth rate in Kokopo District as it is assumed that anyone from these localities Raluana will have moved elsewhere and be covered in the areas in which they moved to. Another alternative is that perhaps some people from East New Britain have moved to West New Britain as the population there grew more than expected.

TABLE THREE
Nets Distributed At District Level In East New Britain Province

District	Population from 2000 Census	Population Of Targeted Areas In 2020	Total Estimated Population 2023	Population Surveyed 2023	House Holds Surveyed 2023	Nets Issued 2023	Nets Distributed Per 100 People	Growth Rate Against 2020 Survey
Gazelle	89,776	146,456	159,106	151,744	32,729	77,170	50.9	1.19
Kokopo	58,345	97,790	106,237	97,127	19,480	49,911	51.4	-0.23
Pomio	44,964	80,668	87,636	86,603	16,663	43,269	50.0	2.39
Rabaul	27,048	43,424	47,175	46,682	10,487	25,128	53.8	2.44
Totals	220,133	368,338	400,153	382,156	79,359	195,478	51.2	1.24

TABLE FOUR
Nets Distributed At LLG Level In East New Britain Province

LLG	District	Population from 2000 Census	Population Of Targeted Areas In 2020	Total Estimated Population 2023	Population Surveyed 2023	House Holds Surveyed 2023	Nets Issued 2023	Growth Rate Against 2020 Survey	Nets Distributed Per 100 People
Central Gazelle Rural	Gazelle	21,140	32,759	35,589	34,932	7,073	17,821	2.16	51.0
Inland Baining Rural	Gazelle	18,628	34,478	37,456	36,400	7,291	17,941	1.82	49.3
Lasul Baining Rural	Gazelle	8,195	14,964	16,256	15,402	3,144	7,990	0.97	51.9
Livuan/Reimber Rural	Gazelle	21,659	30,934	33,606	31,869	7,592	16,582	1.00	52.0
Vunadidir/Tomar Rural	Gazelle	20,154	33,321	36,199	33,141	7,629	16,836	-0.18	50.8
Bitapaka Rural	Kokopo	14,766	26,094	28,348	25,556	4,855	12,770	-0.69	50.0
Duke Of York Rural	Kokopo	10,292	13,577	14,750	14,646	3,213	7,462	2.56	50.9
Kokopo/Vunamami Urban	Kokopo	19,933	39,068	42,442	40,759	8,013	21,258	1.42	52.2
Raluana Rural	Kokopo	13,354	19,051	20,697	16,166	3,399	8,421	-5.33	52.1
Central Inland Pomio	Pomio	13,536	19,214	20,874	21,732	3,763	10,422	4.19	48.0
East Pomio Rural	Pomio	4,937	7,376	8,013	7,903	1,331	3,802	2.33	48.1
Melkoi Rural	Pomio	6,805	13,045	14,172	12,927	2,407	6,894	-0.30	53.3
Sinivit Rural	Pomio	10,433	21,927	23,821	24,761	4,895	12,381	4.13	50.0
West Pomio/Mamusi Rural	Pomio	9,253	19,106	20,756	19,280	4,267	9,770	0.30	50.7
Balanataman Rural	Rabaul	12,869	22,109	24,019	24,802	5,778	13,350	3.91	53.8
Kombiu	Rabaul	8,044	13,077	14,207	13,456	2,977	7,403	0.96	55.0
Rabaul Urban	Rabaul	3,907	5,186	5,634	5,242	985	2,681	0.36	51.1
Watom Island Rural	Rabaul	2,228	3,052	3,316	3,182	747	1,694	1.40	53.2
Totals		220,133	368,338	400,153	382,156	79,359	195,478	1.24	51.2

TABLE FIVE
Nets Donated To Health Centres

District	LLG	HC	Donated
Gazelle	Inland Baining Rural	Kerevat HC2	68
		Raunsepna HC	41
Kokopo	Bitapaka Rural	Lasul HC	38
		Bitapaka HC	22
Pomio	Melkoi Rural	Nutuve HC	40
		Uvol HC	12
Pomio	West Pomio/Mamusi Rural	Marunga HC2	52
		Palmmal HC	26
TOTAL			299

Referring to Table Five, a further 299 LLINs were donated to health centres for use for antenatal nets or for use over beds in the health facility. Donations only occurred where there

were a few loose nets left or it was difficult to return the nets to stores in Kokopo such as the case in Pomio District.

Referring to Table Six, it can be seen that the overall operational cost of the programme was K575,824.39 Kina (Approximately US\$ 159,950) resulting in a cost of about 2.95 Kina or US\$0.85 per net delivered. This was about 4% over the anticipated budget with extra costs mainly a result of car hire. However, overall, distribution costs of under US\$1 per nets delivered should be considered a good result.

TABLE SIX
Cost Of Programme In East New Britain Province (All Costs in Kina)

Expense Types	Budget	Actual	Variances	% Variance
Human Resources	K207,055.11	K181,447.90	25,607.21	87.6
Fuel Cost	K52,522.00	K64,492.62	-11,970.62	122.8
Car Hire Cost	K220,500.00	K292,430.26	-71,930.26	132.6
Boat Hire Cost	K45,600.00	K31,522.86	14,077.14	69.1
Aircraft Hire Cost	K0.00	K165.00	-165.00	0.0
Stationeries/Supplies	K3,000.00	K1,772.32	1,227.68	59.1
5% Contingency	K24,858.86	K3,993.43	20,865.43	16.1
Totals	K553,535.96	K575,824.39	-K54,168.43	104.0

Referring to Table Seven, this shows the radio and cell phone coverage for East New Britain Province. It is good to report that both Digicel and Bmobile have increased their coverage in the province (Bmobile by double of what it used to be), but radio coverage remains almost the same but it is good to note that household owning radios has also increase. Nevertheless, still almost 25% of villages still lack either cell phone or radio coverage which still presents challenges in getting information to remote locations.

TABLE SEVEN
Cell and Radio Coverage In East New Britain Province

District	Villages	House Holds Surveyed	Digicel	Bmobile	Houses with Radios	Villages With Radio Networks
Gazelle	219	32,729	181	83	10,364	160
Kokopo	136	19,480	131	79	4,200	128
Pomio	376	16,663	232	35	2,697	60
Rabaul	93	10,487	90	66	5,197	91
Total	824	79,359	634	263	22,458	439

Conclusions

Overall, it can be said that the LLIN distribution in East New Britain Province was generally a huge success both in terms of results and great collaboration between staff from RAM, provincial and district health authorities, and the Catholic Church, United Church (UC), Seventh Day Adventist Church Health Services who have a presence in the areas receiving nets. Through this collaboration, the data suggests that, with the exception of areas in Butuwin where Tribal Fights were taking place, all villages were reached and practically all families in those villages received nets despite any local challenges.

There were some challenges which included the following:

- Delay by a week for JJ Shipping to travel to Pomio has caused delay in operations as officers had to wait in Kokopo for a week.
- Bad weather, strong wind and heavy rainfall (wet climate) caused delay in survey and distributions and additional fuel was needed to complete operations.
- The RAM officer responsible for overseeing the Marunga, Hoiya and Guma Health Facilities faced a challenging situation while crossing a river enroute to Kokopo. Unfortunately, a river flooded, leading to the driver losing control of the vehicle due to the elevated water level. As a result, all belonging and survey books were swept away by the rushing waters of the river. The driver managed to salvage a few items, but majority were washed away.
- Due to ongoing tribal fighting, five villages were not covered under Butuwin Health Centre catchment in Raluana LLG. Hopefully, these areas can be covered in the future when the security becomes good.
- There was a road accident involving one of our hire cars that ran into the private yard of a local resident causing damage to both the properties of the local resident and the car. This responsibility was left with the hire car owner.
- There was another incident in Pomio health centre where the health centre ambulance got hit with a stone from a catapult when it was returning home after being engaged in the program for the day. As it was already dark, they could not see or identify and perpetrators.



Fig.6 – Household Survey Verification In Pomio Together With Household Summary On Public Display

On the positive side

- There was excellent collaboration between all health staff and RAM and also the Provincial Malaria Supervisor Mr Patrick Vuravura was very supportive to the team from and very start of the operations to the very end.
- Despite the challenges faced, officers managed to complete their operations successfully.

Other than this, there was excellent collaboration between all health staff and RAM and despite all the major and minor challenges faced, all officers and health facilities managed to complete their operations successfully.

Other than this, as with other provinces in the country where RAM has operated in over the last ten years, the methodologies used this time, including survey verification processes appeared practical and were openly welcomed by both villagers and implementers, particularly

the practice of hanging up the list of names in the middle of the village following a survey. This allowed communities to feel that they were part of a transparent process. This is not to say that perhaps some extra people managed to slip into the books, but in general, it was felt that the system was fair and included practically everyone concerned. The use of the master lists also ensured that all villages were reached and accounted for.

The review of the data prior to the distribution was also important. This ensured that all villages and families received the correct numbers of nets. The 2000 Census Lists were very important to ensure that survey teams reached all villages: without the complete list of villages, it would be very difficult to make a detailed report.

The greatest complaint still received from communities was the number of nets they received. Even though the team explained the logic of how the allocation of nets is calculated, some families still expect one net per person, others expect it to be based on a fixed allocation based on the number of people in the family, and yet others thought they would be given nets based on the number of nets they stated they already had. This highlights that a better system of explaining the allocation system still needs to be developed. In general, unlike some previous districts covered by RAM and DHTs of East New Britain Province, team members assisted in the allocation of the nets which meant they were in a better position to explain the distribution system on the ground. Nevertheless, despite all the difficulties involved, it would appear that the vast majority of community members accepted the outcome and there were no real problems or complaints encountered.

Acknowledgements

On behalf of the Rotarians Against Malaria household distribution team who worked in Gazelle, Pomio, Rabaul and Kokopo districts, we would like to sincerely acknowledge and thank the East New Britain Provincial Health Authority and the District Health Staff of the four districts for the excellent help and cooperation during the Long Lasting Insecticide Nets (LLINs) distribution programme.

In particular, we would like to thank at provincial level Dr Ako Yap (Chief Executive Officer) and his team with special thanks to Mr Norman Vakore (Director Public Health), Dr Patrick Kiromat (Director Curative Health Services), Mr Paskalis Kinakava (Public Health Programs), Mrs Margaret Kaile (Partners Coordinator), Mr Joachim Kais (Provincial Disease Control Officer) and in particular Mr Patrick Vuravura (Provincial Malaria Supervisor) who worked with the RAM teams throughout the program.

For the district staff, we would like to sincerely thank all those who tirelessly took part in the programme, and in particular we would like to mention the following people who were instrumental in providing the local expertise and advice from planning to implementation of the programme in the four districts namely:

Gazelle District

Name	Occupation	Institution
Mr. Conrad Piyap	District Health Coordinator	Gazelle District
Mr. Sylvanus Arijah	Health Extension Officer	Tapipipi Health Centre
Mr. Michael Maramun	Community Health Worker	Tapipipi Health Centre
Mr. John Paul	Community Health Worker	Open Bay Health Centre
Mr. Steven Divi	Community Health Worker	Open Bay Health Centre
Mrs. Emma Nanarea	Sister in Charge	Raunsepna Health Centre
Mrs. Celine Palangat	Nursing Officer	Raunsepna Health Centre
Mr. Thomas Para	Community Health Worker	Raunsepna Health Centre
Mrs. Dorothy Late	Community Health Worker	Raunsepna Health Centre

Mr. Leo Ono	Officer in Charge	Lassul Health Centre
Mr. Cajus Taquis	Community Health Worker	Lassul Health Centre
Ms. Georgina George	Officer in Charge	Gaulim Health Centre
Mr. Wamar Abia	Community Health Worker	Gaulim Health Centre
Mr. Peter Irakau	Health Extension officer	Kerevat Health Centre
Mr. Dominic Samson	Officer in Charge	Kamanakam Aid Post
Mr. Michael Kapu	Officer in Charge	Utmei Aid Post
Mrs. Felicitus Soki	Sister in Charge	Vunapaladin Aid Post
Mrs. Dorothy Sebulon	Sister in Charge	Vudal Clinic
Mr. Bernard Wananara	Nursing Officer	Livuan Health Centre
Mr. Oliver Liplip	Community Health Worker	Vunapaka Health Centre

Pomio District

Name	Occupation	Institution
Mrs. Imelda Kally	District Health Coordinator	Pomio District
Miss. Rosemary Karapapate	Officer in Charge	Guma Health Centre
Miss. Benedict Litau	Sister in Charge	Guma Health Centre
Miss. Flora Lonaneso	Community Health Worker	Marunga Health Centre
Miss. Beverlyn Kuskus	Sister in Charge	Hoiya Health Centre
Miss. Florence Taso	Community Health Worker	Hoiya Health Centre
Ms. Lennie Nene	Sister in Charge	Uvol Health Centre
Mr. Stanis Kapangeu	Community Health Worker	Uvol Health Centre
Mrs. Margaret Tavui	Officer in Charge	Warangoi Health Centre
Mr. Methodius Pusla	Community Health Worker	Aona Health Centre
Mr. Dominic Kensep	Community Health Worker	Sivaona Health Centre
Mr. Henry Aisapo	Community Health Worker	Palmamal Health Centre
Mr. Albert Tumalesa	Community Health Worker	Viosopuna Health Centre
Mrs. Gertrude Otto	Sister in Charge	Pomio Health Centre
Mr. Freddy Toduk	Community Health Worker	Pomio Health Centre
Mr. Daniel Munglolo	Community Health Worker	Pomio Health Centre
Mr. Julies Piap	Health Extension Officer	Matong Health Centre
Mrs. Linda Konna	Sister in Charge	Nutuve Health Centre

Rabaul District

Name	Occupation	Institution
Mr. Ernest Torot	Disease Control Officer	Rabaul Urban Clinic
Mr. Sylvester Tarere	Laboratory Technician	Rabaul Urban Clinic
Mrs. Karla Mek	Officer in Charge	Rabaul Urban Clinic
Mrs. Margaret Melky	Sister in Charge	Rabaul Urban Clinic
Mrs. Lina Tagai	Sister in Charge	Gelagela Health Centre
Ms. Shammar Bale	Nursing Officer	Gelagela Health Centre
Mr. Othello Zao	Health extension Officer	Gelagela Health Centre
Ms. Imelda Lavanen	Community Health Worker	Gelagela Health Centre
Mr. Jessie Herenan	Community Health Worker	Nonga Base Hospital

Kokopo District

Name	Occupation	Institution
Mrs. Anastasia Dio	District Health Coordinator	Kokopo District
Sr. Drocas	Sister in Charge	Vunapope Health Centre
Mr. Peter Wartar	Nursing Officer	Vunapope Health Centre
Ms. Jessica Kestapua	Health Extension Officer	Vatnabara Health Centre
Sr. Jecobert Samuel	Nursing Officer	Vatnabara Health Centre
Mr. Allan Rhawes	Community Health Worker	Vatnabara Health Centre
Mr. Selin Eron	Community Health Worker	Molot Health Centre
Mrs. Antonia Itoval	Community Health Worker	Mope Health Centre
Mr. Jerry Kawa	Nursing Officer	Bitapaka Health Centre

Mrs. Anisah Tilili	Environmental Health Officer	Bitapaka Health Centre
Mr. Clement Kulam	Environmental Health Officer	Butuwin Health Centre
Ms. Urami Shedrick	Community Health Worker	Butuwin Health Centre

RAM would like to specially acknowledge the support received from established and local service providers for logistical support namely; Consort Shipping for Transporting 18 containers from Lae to Rabaul of which 2 were stored at Rabaul District Office yard, 7 at Kerevat District Office yard and 9 were stored at Butuwin Provincial Health Office yard for the duration of operation. RAM also thanks JJ Shipping for further delivery of nets and fuel drums with officers from Kokopo to various health facilities in Pomio District.

RAM also thanks Hertz Hire Cars, Country Tours Hire Cars and all the local hire car owners and local boat owners, for allowing their cars to be used for this operation. We would not have reached many communities without the dedication of the drivers and dingy operators.

RAM would like to also thank Adds Service Station and JR Holdings for supplying bulk fuel for the operation.

RAM also thanks all the church run health facilities coordinated under Catholic Church, United Church (UC), Seventh Day Adventist Church Health Services and lastly to all the Government run facilities for allowing their staff to work with the RAM team.

Last but not the least, RAM would like to extend our acknowledgement and appreciation to all the hard working volunteers and local community leaders for ensuring all homes were surveyed and assisting in distributing all the nets. RAM thanks you all very much for your hard work, support and local expertise in making the overall program a success.

Appendix One – History Of LLIN Distribution In PNG

The use of Insecticide Treated Nets (ITNs) started in PNG in 1985 when the PNG Institute of Medical Research (IMR) conducted one of the first trials demonstrating the health impact of treating mosquito nets with insecticide. The study, done near Madang, showed a reduction of *P. falciparum* incidence and prevalence in children below five years of age sleeping under permethrin-treated nets. The protective effect of insecticide-treated nets (ITNs) was also confirmed in many other trials around the world. As a consequence of such findings, the national malaria control program in PNG started emphasizing the use of ITNs in 1989. However, no regular or large-scale distribution of ITNs was carried out at this time.

In the following years, coverage with mosquito nets and other control interventions remained patchy and low in many parts of PNG. It was during this period that Rotarians Against Malaria (RAM) was created from the Port Moresby Rotary Club in 1997. Using a donation of 150,000 treated nets given to them from the National Department of Health (originally from AusAid), RAM successfully ran a revolving fund of nets in which nets were sold at a price which allowed the proceeds to buy more nets. RAM did this successfully for many years distributing about 45,000 treated nets a year from 2000 to 2004.

Prior to 2004, most treated nets had to be re-treated every six months or a year which requires a lot of work and organisation. In early 2004 everything changed with the introduction of Long-Lasting Insecticidal Nets (LLINs) which would last for 20 washes and effectively no longer required to be treated repeatedly. This change in nets also coincided with the introduction of the Global Fund into PNG known as the Global Fund Round 3.

From 2005 to 2009 the malaria programme in PNG received and delivered about 2.3 million nets throughout the country at a rate of one net for every 2.5 people. The delivery of nets to village level was under the provincial health authorities and reached most parts of the country with Rotarians Against Malaria (RAM) being responsible in delivering the containers of nets to the provinces from Port Moresby and Lae where the nets arrived from overseas.

While the programme was very successful in some areas it was not so successful in others. Problems included slow release of funds from central to provincial level, some provinces not following technical guidelines given resulting in some areas not been covered, and technical and financial reporting leaving a lot to be desired in many of the provinces. When further funds became available in what is known as the Global Fund Round Eight, it was decided that Rotarians Against Malaria (RAM) would take over the coordination of the LLIN programme under the supervision of the National Malaria Control Program.

This change has resulted in RAM being responsible for the overall coordination of the LLIN distribution of LLINs in the country particularly in the areas of quantification, procurement, reporting and delivery to provincial and district level. However, the actual delivery of nets to village level is a collaboration between RAM, provincial health authorities and district health and health centre staff.

Fig.1 shows the distribution of nets to districts and provinces from 2006 to 2009 while Fig.2 shows the distribution of nets from 2010 to 2014 and Fig.3 shows the distribution from 2015 to 2017 which includes under five distributions in 2016 and 2017. Under Five distributions had been carried out in areas above 1600m and in Port Moresby and Lae City due to lack of funds. This situation changed when support from Against Malaria Foundation was received.

Up until June 2022, a total of 14.7 million LLINs had been distributed to household level under the coordination of RAM. Therefore, with the 2.5 million nets distributed from 2006 to 2009, this means that about 17.2 million nets have been delivered to household level in PNG since 2006. This is more than one net per every person in PNG. RAM has also distributed about

another 1.5 million nets to health centres for distribution to pregnant women and for prisons and boarding schools.

It should also be noted that alongside developments related to treated mosquito nets, the first cases of chloroquine-resistant malaria were reported in 1976. This progressed rapidly to widespread resistance of *P. falciparum*, and to a slightly lesser extent *P. vivax*, to chloroquine, amodiaquine and sulphadoxine-pyrimethamine (SP). In studies conducted between 2003 and 2005, even combination regimens of these drugs faced up to 29% resistance of *P. falciparum*². This situation together with Global Fund Round 8 also saw the introduction of artemether lumefantrine branded as Malawan and IPT (Intermittent Preventative Treatment) for antenatal women using Fansidar (Pyrimethamine Dapsone).

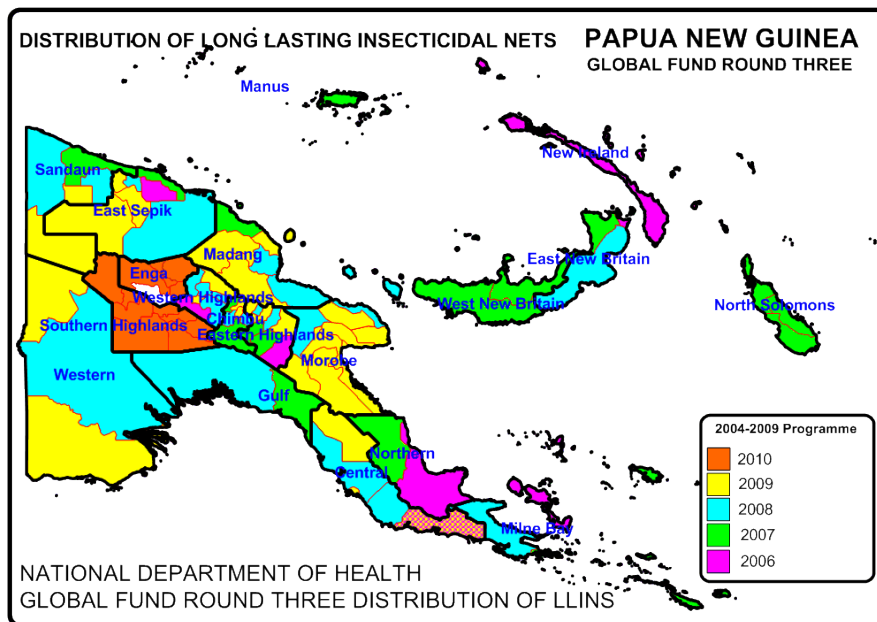


Fig. 1 Distribution Of Nets Under National Department Of Health From 2006 To 2010

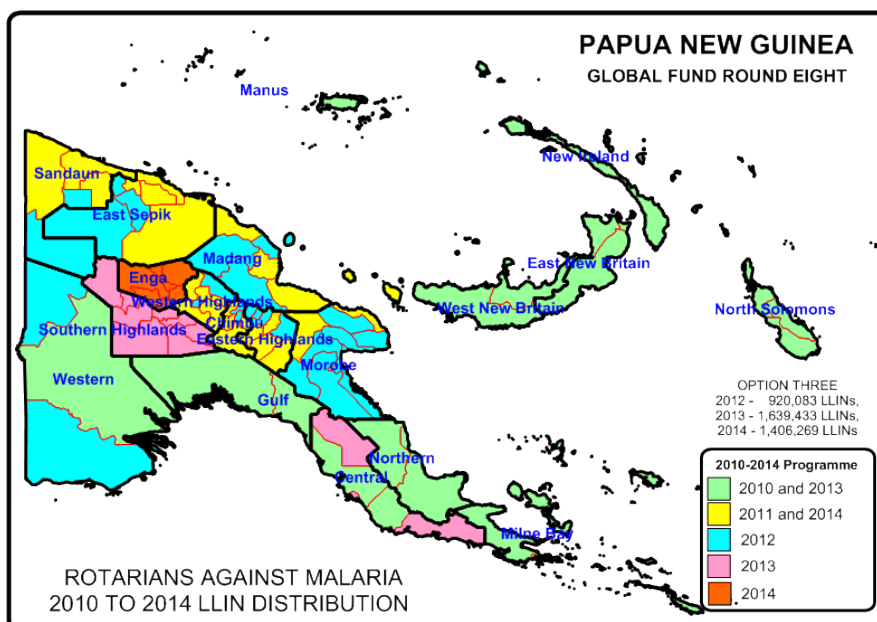


Fig.2 Distribution of LLIN Programme 2010 to 2014

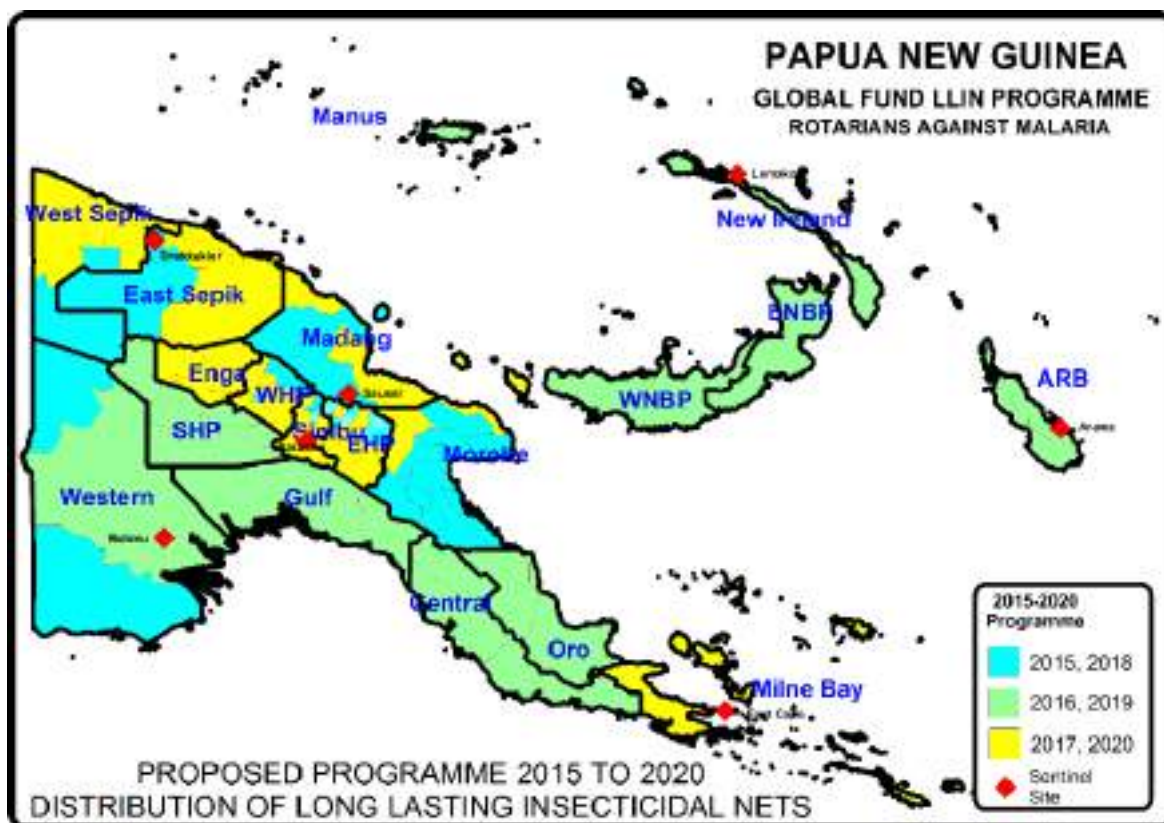


Fig.3 LLIN Distribution Programme 2015 to 2020

TABLE ONE - LLINs Delivered In PNG Under Coordination Of RAM From 2010

Period	Dates	Districts	Provinces	Nets Delivered	Type Of Net Delivered
Phase One (2010-2011)	Nov 09 - Oct 11	50 Districts	18 Provinces	1,890,448	Permanet 2
Year 3 (2012)	Nov 11 - Sep 12	27 Districts	10 Provinces	832,671	Permanet 2
Year 4 (2013)	Oct 12 - Sep 13	28 Districts	12 Provinces	1,210,391	Permanet 2
Year 5 (2014)	Oct 13 - Sep 14	23 Districts	11 Provinces	1,374,791	Permanet 2
Year 5 (2014) No Cost Extension	Oct 14 - Dec 14	Okapa, Lufa, Madang, Angoram, Maprik, Yangoru Saussi, Wewak, Aitape Lumi, Nuku and Vanimo Green	EHP, Madang, East Sepik and Sandaun	454,806	Permanet 2
Year 6 (2015)	Jan - Dec 2015	29 Districts	11 Provinces	932,822	Permanet 2
Year 7 (2016)	Jan - Dec 2016	27 Districts	13 Provinces	805,597	Permanet 2
Year 8 (2017)	Jan - Dec 2017	36 Districts	13 Provinces	1,543,947	Permanet 2
Year 9 (2018)	Jan - Dec 2018	27 Districts	11 Provinces	1,211,922	Permanet 2
Year 10 (2019)	Jan - Dec 2019	26 Districts	12 Provinces	1,266,525	Permanet 2
Year 11 (2020)	Jan - Dec 2020	28 Districts	13 Provinces	1,495,368	Safenet, Interceptor, Yorkool and Royal Sentry
Year 12 (2021)	Jan - Dec 2021	30 Districts	9 Provinces	1,301,456	Yahe
Year 13 (2022)	Jan- Mar 2022	North and South Fly, Telefomin, Kairuku	Western, Sandaun, Central	164,212	Magnet, Yahe
	Apr - Jun 2022	Rigo, Kairuku Hiri, Gollala, Koroba Kopiago, Komo Magarima, Nipa, Kagua Erave, Ialibu Pangia, Kerema	Southern Highlands, Hela, Central, Gulf	242,948	Magnet, Yorkool
	Jul - Sep 2022	Kairuku, Kikori, Middle Fly, Sohe, Ijviati, Manus	Gulf, Western, Oro, Manus	290,096	Yahe, Magnet
	Oct - Dec 2022	Manus, Kavieng, Namatania, North Bougainville, Central Bougainville, and South Bougainville	Manus, New Ireland, ARoB	255,270	Magnet
New Funding Model (2015-2021)				9,510,163	
Round Eight (2010 - 2014)				5,763,107	
Overall Total Phase One and Phase Two And NFM				15,273,270	

Appendix Two – Malaria In East New Britain Province Compared With Other Provinces

Fig.1 shows the decrease of malaria from 2007 to 2015 in all provinces, Fig. 2 shows the actual malaria incidence in 2020 compared with other provinces and Fig.3 shows annual malaria trends from 2017 to 2021. In East New Britain Province, it can be seen from Fig.1 that malaria decreased from 2007 to 2015 by 70% which is a similar reduction to New Ireland Province. In Fig.2, in 2020 it can also be seen that in East New Britain Province the malaria incidence is 315 per 1000 which is similar to the provinces of Morobe, Madang and East Sepik. Fig. 3 and Fig.4 show the malaria incidence by year with Fig.4 showing malaria incidence compared with net distributions in East New Britain Province. It can be noted that in general, LLIN distributions in 2010 and 2013 had a massive impact on malaria with three years of successive malaria reductions. However, following the distribution of nets in 2016 no decrease in malaria was noted and in 2019, malaria reduced for one year before rising again. This is believed to be because of changes to the LLINs PNG received after 2012 which resulted in the nets no longer working as they did in the past. However, a completely new type of nets has been distributed on this time round and it is hoped that it will have a much bigger impact on malaria than in previous years.

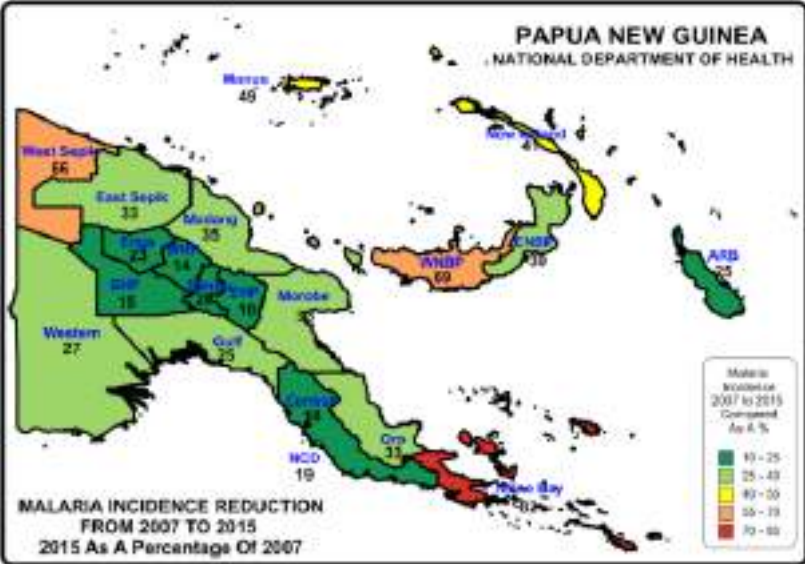


Fig.1 – Relative Reduction Of Malaria In Provinces Of PNG

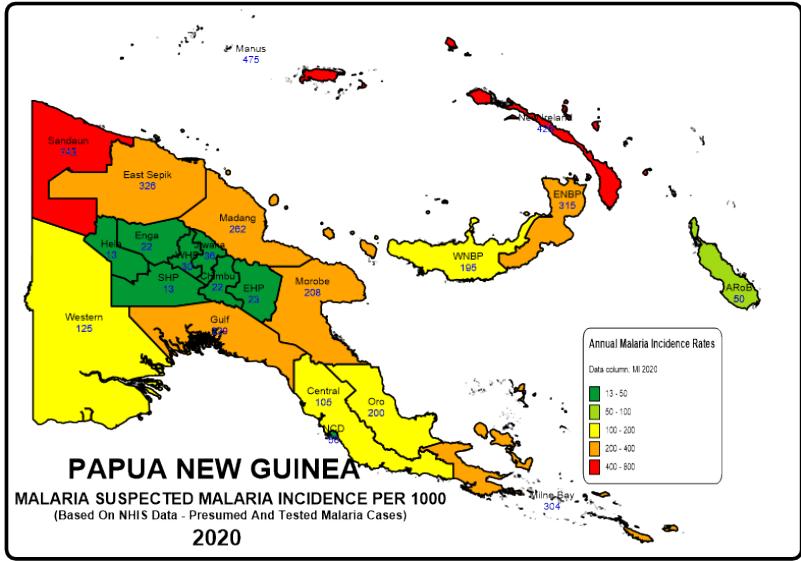


Fig.2 – Reported Malaria Incidence In 2020

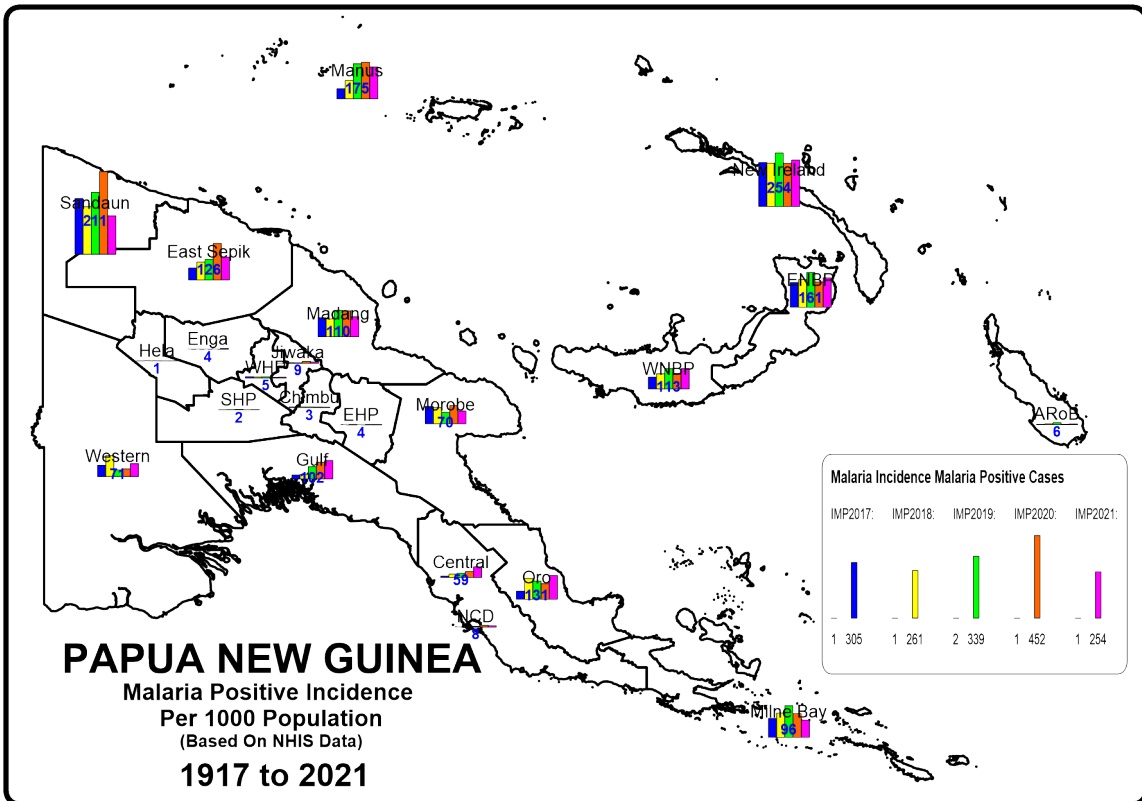


Fig. 3 - Reported Malaria Incidence In PNG From 2016 To 2020

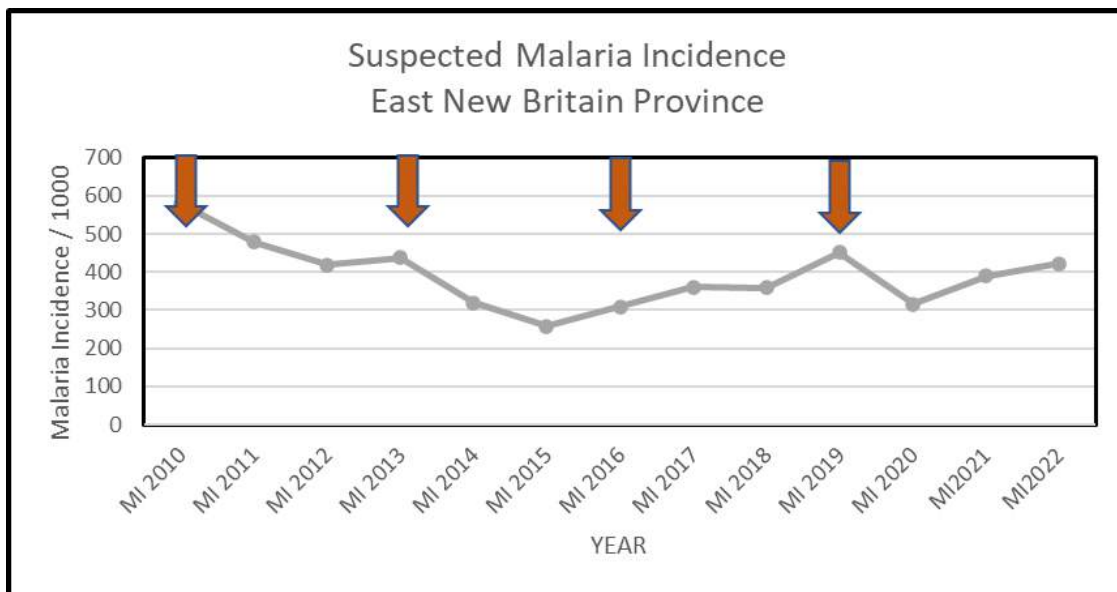
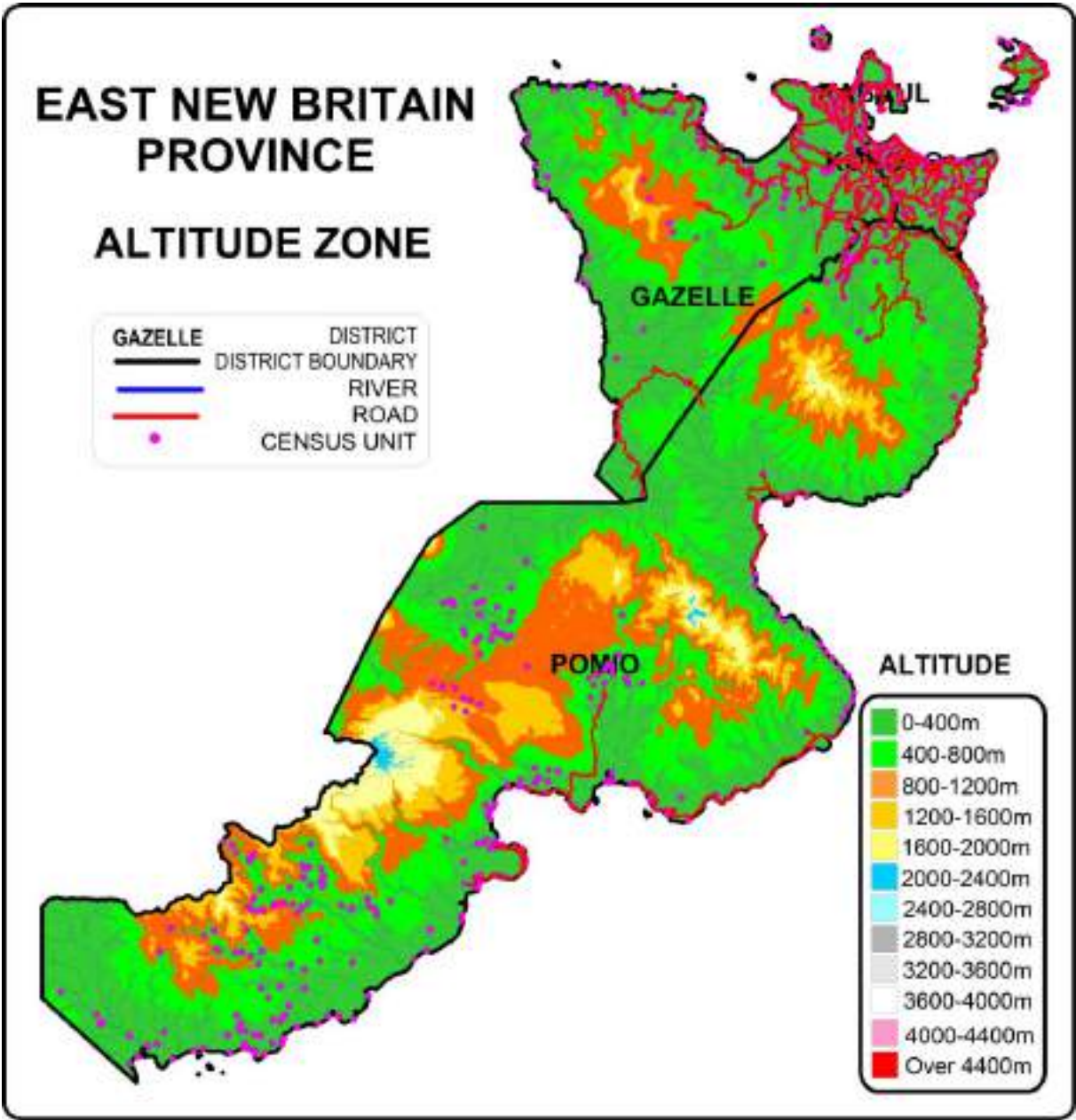


Fig. 4 – Malaria Suspected Malaria Incidence Versus Distribution Of Nets
Arrows represents LLIN distributions done in East New Britain Province in 2010, 2013, 2016 and 2019.

Appendix Three - Malaria By Altitude

East New Britain Province is comprised of a one large island and a number of smaller islands in the Coral Sea east of the mainland of Papua New Guinea (PNG). While there are some hills that go above 2000m, the majority of the population live on the coastal areas below 400m where malaria is endemic with about 1% of the population living in the mountains between 800-1200m. About 60% of the island are accessible by road and they all live on the main island. For the rest of the population, they can only be reached by boat with about 6% living in remote areas where trekking is required to reach them.

Fig. 1 Altitude Zones In East New Britain Province



Appendix Four – Other Photographs



LLIN Distributions In Open Bay (Left) And Tapipipi (Right)



Distributions In Bitopaka (Left) And Rabaul (Right)



Marking Nets In Distributions In Sivona (Left) And Distribution In Gaulim (Right)



Distributions In Vunapope



Landcruiser Transporting Nets In Rabaul (Left) And Ferry Used To Transport Nets And Staff To Pomio (Right)



Boats Used For Transportation In Pomio (Left) And Vehicle Stuck In Water In Warongoi (Right)



Happy Customers In Gaulim (Left), Mungou (Middle) and Rabaul (Right)

ANNEX ONE

EAST NEW BRITAIN PROVINCE GAZELLE POPULATION 2022 LLIN DISTRIBUTION SUMMARY SHEET

LLG	WARD	Village/ Census Unit	Estimated 2022 Population Based on 2000 Census	Estimated 2022 Population Based on 2019 Data	Health Centre	Population Surveyed	House Holds Surveyed	Nets Issued	Date Of Distribution	Villages	Digicel	Emobile	Houses With Radios	Radio Networks	Comments	
GAZELLE			159,106	159,106		151,744	32,729	77,170			219	181	83	10,364	160	
CENTRAL GAZELLE RURAL			37,465	35,589		34,932	7,073	17,821			33	30	22	2,840	31	
1	NAPAPAR No 1		2,162	2,244		2,473	475	1,235			2	2	2	455		
		1.Napapar No. 1	1,698	1,433	Napapar HC	1,914	376	944	19.03.23	1	1	1	356	NBC,PNGFM	Road	
		2.Sunny Bird	464	812	Napapar HC	559	99	291	23.03.23	1	1	1	99	NBC,PNGFM	Road	
2	NAPAPAR No 2		3,027	3,973		3,842	810	1,969			3	3	1	435		
		1.Napapar No. 2	3,027	3,973	Napapar HC	2,304	522	1,191	17.03.23	1	1	0	258	NBC,PNGFM	Road	
		2.Vunagulum		NEW	Napapar HC	664	138	338	21.03.23	1	1	0	136	NBC,PNGFM	Road	
		3.Vunavai		NEW	Napapar HC	874	150	440	16.03.23	1	1	1	41	NBC,PNGFM	Road	
3	NAPAPAR No3		1,634	1,248		886	200	454			1	1	1	63		
		1.Napapar No. 3	1,634	1,248	Napapar HC	886	200	454	15.03.23	1	1	1	63	NBC,PNGFM	Road	
4	NAPAPAR No 4		1,466	1,613		2,387	485	1,188			2	2	2	197		
		1.Napapar No. 4	1,466	1,613	Napapar HC	1,633	286	814	15.03.23	1	1	1		NBC,PNGFM	Road	
		2. Vunagomor		NEW	Napapar HC	754	199	374	21.03.23	1	1	1	197	NBC,PNGFM	Road	
5	NAPAPAR No 5		2,251	1,733		1,909	278	1,003			1	1	1	201		
		1.Napapar No. 5	2,251	1,733	Napapar HC	1,909	278	1,003	16.03.23	1	1	1	201	NBC,PNGFM	Road	
6	VUNAGOGO		1,602	1,240		1,129	196	562			1	1	1	77		
		1.Vunagogo Village	1,602	1,240	Napapar HC	1,129	196	562	20.03.23	1	1	1	77	NBC,PNGFM	Road	
7	TAKEKEL		3,176	3,019		3,044	579	1,553			4	3	3	160		
		1.Takekel Village	2,490	1,659	Napapar HC	1,548	310	799	22.03.23	1	1	1	107	NBC,PNGFM	Road	
		2.Tomaringa Police Dept.	556	458	Napapar HC	538	85	277	22.03.23	1	1	1		NBC,PNGFM	Road	
		3..Vunakanau Police Station	129	0	Napapar HC										Same as Tomaringa Police Dept	
		4.Vunalama		717	Napapar HC	785	150	390	22.03.23	1	1	1	53	NBC,PNGFM	Road	
		5. Vunakanau compound		185	Napapar HC	173	34	87	22.03.23	1	1			NBC,PNGFM	Road	
8	KADAKADA		1,078	1,009		1,165	225	620			1	1	1	83		
		1.Kadakada Village	1,078	1,009	Navunaram HC	1,165	225	620	22.03.23	1	1	1	83	NBC,PNGFM	Road	
9	RAKUNAI		3,268	2,933		3,067	659	1,632			1	1	1	260		
		Rakunai	3,268	2,933	Navunaram HC	3,067	659	1,632	21.03.23	1	1	1	260	NBC,PNGFM	Road	
10	LATLAT		985	516		488	114	265			3	1	1	53		
		Latlat Village	539	516	Navunaram HC	488	114	265	18.03.23	1	1	1	53	NBC,PNGFM	Road	
		Warena	71	0	Navunaram HC					1					Non Existant	
		Warongoi	376	0	Navunaram HC					1					Non Existant	
11	NAVUNARAM		3,116	2,670		2,658	487	1,342			1	1	1	240		
		Navunaram	3,116	2,670	Navunaram HC	2,658	487	1,342	16.03.23	1	1	1	240	NBC,PNGFM	Road	
12	TAVUULIU		1,864	1,619		1,978	469	986			1	1	1	284		
		Tavuiliu	1,864	1,619	Navunaram HC	1,978	469	986	16.03.23	1	1	1	284	NBC,PNGFM	Road	
13	MALMALUAN		1,537	1,154		1,079	240	563			1	1	1	75		
		Malmaluan	1,537	1,154	Navunaram HC	1,079	240	563	17.03.23	1	1	1	75	NBC,PNGFM	Road	
14	KARAVIA No 1		994	1,308		0	0	0			0	0	0			
		Karavia No. 1	994	1,308	Navunaram HC										Now Under Gazelle, Raluana	
15	KARAVIA No 2		622	688		621	147	317			1	1	1	106		
		Karavia No. 2	622	688	Navunaram HC	621	147	317	17.03.23	1	1	1	106	NBC,PNGFM	Road	
16	TAVILO STLEMNT		3,589	3,619		3,392	655	1,690			6	6	0	0		
		Vudal Timbers	443	467	Kerevat HC2	493	100	248	11.03.23	1	1	0	0	RENB	Road	
		Raulavat Plantation	479	448	Kerevat HC2	434	70	226	11.03.23	1	1	0	0	RENB	Road	
		Tavilo Plantation	1,412	1,308	Kerevat HC2	352	85	176	11.03.23	1	1	0	0	RENB	Road	
		Tavilo Settlement	826	1,006	Kerevat HC2	1,076	212	531	11.03.23	1	1	0	0	RENB	Road	
		Martin Plantation	78	49	Kerevat HC2	567	91	278	11.03.23	1	1	0	0	RENB	Road	
		Tokiala Plantation	351	341	Kerevat HC2	470	97	231	11.03.23	1	1	0	0	RENB	Road	
17	TALAKUA		440	0		0	0	0			0	0	0			
		Takua Village	440	0	Kerevat HC2										Covered from Raluana LLG, Wd 20, Butuwin HC	
18	KEREVAT TOWNSHIP		1,031	800		824	135	404			1	1	1	0		
		Keravat L/Land Agri. Stn	1,031	800	Kerevat HC2	824	135	404	12.03.23	1	1	1	0	RENB	Road	
19	TINGANAGALIP		1,958	1,636		1,587	350	857			1	1	1	151		
		Tinganagalip	1,958	1,636	Navunaram HC	1,587	350	857	20.03.23	1	1	1	151	NBC,PNGFM	Road	
20	KEREVAT URBAN		1,666	2,567		2,403	569	1,181			2	2	2	0		
		Keravat 01	643	802	Kerevat HC2	942	307	463	13.03.23	1	1	1	0	RENB	Road	
		Keravat 02	1,023	1,765	Kerevat HC2	1,461	262	718	13.03.23	1	1	1	0	RENB	Road	
INLAND BAINING RURAL			33,014	37,456		36,400	7,291	17,941			58	51	20	468	52	
1	ALAKASM		1,060	902		970	146	466			1	0	0	0		
		Alakasam	1,060	902	Malasaet CHP	970	146	466	06.03.23	1	0	0	0		Road	
2	LAMBERAIN		743	939		903	160	438			1	0	0	1		
		Lamberain	743	939	Raunsepna HC	903	160	438	11.03.23	1	0	0	1	98.6fm	Road/Trek	
3	RAUNSEPNA		1,926	2,010		1,630	272	801			1	1	0	75		
		Raunsepna	1,926	2,010	Raunsepna HC	1,630	272	801	12.03.23	1	1	0	75	98.6fm	Road/Trek	
4	YAYAMI		592	500		963	181	471			2	0	0	0		
		Yayami	204	500	Malasaet CHP	436	88	209	06.03.23	1	0	0	0		Road	
		Labam	388	0	Malasaet CHP	527	93	262	06.03.23	1	0	0	0		Road	
5	MALASAET		1,218	1,403		1,531	299	745			2	0	0	0		
		Malasaet	890	675	Malasaet CHP	756	149	373	05.03.23	1	0	0	0		Road	
		Kalaska	328	728	Malasaet CHP	775	150	372	06.03.23	1	0	0	0		Road	
6	BURIT		533	995		1,091	238	544			1	1	1	0		
		Burit	533	995	Kerevat HC	1,091	238	544	06.03.23	1	1	1	0	RENB	Road	
7	MANAPKI		2,208	2,290		1,877	351	1,118			4	4	0	0		
		Small Vudal	385	359	Kerevat HC	86	16	43	13.03.23	1	1	0	0	RENB	Road	
		Raburua	321	269	Kerevat HC										Covered as Karavia 1 (Kokokp Ward, Raluana LLG, Raburua	
		Wuatam	574	492	Kerevat HC	564	98	274	08.03.23	1	1	0	0	RENB	Road	

LLG	WARD	Village/ Census Unit	Estimated 2022 Population Based on 2000 Census	Estimated 2022 Population Based on 2019 Data	Health Centre	Population Surveyed	House Holds Surveyed	Nets Issued	Date Of Distribution	Villages	Digicel	Bmobile	Houses With Radios	Radio Networks	Comments
		Nguvalian	96	143	Kerevat HC	281	41	139	08.03.23	1	1	0	0	RENB	Road
		Hetwara	833	1,027	Kerevat HC	946	196	662	08.03.23	1	1	0	0	RENB	Road
8	LIAGA		1,944	1,690		1,032	196	519		3	3	3	0		
		Liaga	401	433	Kerevat HC	338	76	167	10.03.23	1	1	1	0	RENB	Road
		Usuvit	385	489	Kerevat HC	257	48	133	16.03.23	1	1	1	0	RENB	Road
		Kerevat CIS	1,159	768	Kerevat HC	437	72	219	10.03.23	1	1	1	0	RENB	Road
9	KEREB		1,526	1,619		1,442	267	703		1	1	1	0		
		Kereba	1,526	1,619	Kerevat HC	1,442	267	703	09.03.23	1	1	1	0	RENB	Road
10	VUDAL		2,997	3,267		3,132	614	1,553		2	2	2	0		
		Vudal University	1,003	1,269	Kerevat HC	864	142	431	13.03.23	1	1	1	0	RENB	Road
		Vudal Settlement	1,994	1,998	Kerevat HC	2,268	472	1,122	13.03.23	1	1	1	0	RENB	Road
11	VUNAPALADING No 1		2,079	2,923		3,339	668	1,655		2	2	2	0		
		Vunapalading Govt Stn.	278	603	Kerevat HC	568	102	275	09.03.23	1	1	1	0	RENB	Road
		Vunapalading No. 1	1,801	2,320	Kerevat HC	2,771	566	1,380	10.03.23	1	1	1	0	RENB	Road
12	VUNAPALADING No 2		801	1,127		998	169	493		1	1	0	0		
		Vunapalading No. 2	801	1,127	Kerevat HC	998	169	493	08.03.23	1	1	0	0	RENB	Road
13	RANGLIT		502	379		517	97	249		1	1	0	0		
		Rangulit	502	379	Kerevat HC	517	97	249	08.03.23	1	1	0	0	RENB	Road
14	LAMARAINAM		904	1,406		1,529	278	749		5	5	0	0		
		Koki	360	568	Kerevat HC	566	95	272	08.03.23	1	1	0	0	RENB	Road
		Ulak	170	156	Kerevat HC	150	33	75	08.03.23	1	1	0	0	RENB	Road
		Garom	71	225	Kerevat HC	290	50	142	08.03.23	1	1	0	0	RENB	Road
		Vaililai	218	255	Kerevat HC	273	50	137	08.03.23	1	1	0	0	RENB	Road
		Utmei H/School	85	201	Kerevat HC	250	50	123	08.03.23	1	1	0	0	RENB	Road
15	MANDRESS SETT		1,297	1,336		1,270	212	638		2	2	0	0		
		Mandress Station	53	24	Kerevat HC	163	30	82	08.03.23	1	1	0	0	RENB	Road
		Mandress Settlement	1,244	1,312	Kerevat HC	1,107	182	556	08.03.23	1	1	0	0	RENB	Road
16	KULIT		835	956		901	163	452		1	1	0	0		
		Kulit	835	956	Kerevat HC	901	163	452	08.03.23	1	1	0	0	RENB	Road
17	RADINGI		992	1,159		783	156	399		2	2	0	0		
		Radingi	665	810	Kerevat HC	532	106	271	07.03.23	1	1	0	0	RENB	Road
		Mandress Plantation	328	349	Kerevat HC	251	50	128	08.03.23	1	1	0	0	RENB	Road
18	KAMANAKAM		1,187	1,630		1,366	266	665		3	3	0	0		
		1.Kamanakam	813	914	Kerevat HC	826	171	403	08.03.23	1	1	0	0	RENB	Road
		2.Vunalama Pltn.	307	365	Kerevat HC	298	60	146	08.03.23	1	1	0	0	RENB	Road
		3.Vunalama Sett.	67	351	Kerevat HC	242	35	116	08.03.23	1	1	0	0	RENB	Road
19	RAGAGA		1,210	1,510		1,412	243	686		4	4	4	0		
		1.Ramandu Sett.	354	223	Kerevat HC	419	50	202	07.03.23	1	1	1	0	RENB	Road
		2.Ragaga	376	545	Kerevat HC	428	106	206	07.03.23	1	1	1	0	RENB	Road
		3.Kinawara Pltn.	363	498	Kerevat HC	410	68	200	07.03.23	1	1	1	0	RENB	Road
		4.Ramandu Pltn.	117	244	Kerevat HC	155	19	78	07.03.23	1	1	1	0	RENB	Road
20	RHUNGAGI		1,000	828		768	177	376		3	3	0	21		
		Rhungagi	1,000	175	Gaulim HC	145	50	73	01.03.23	1	1	0	16	No	2 Days Trek from Vunga
		Baram		NEW	Gaulim HC	33	11	15	28.02.23	1	1	0	0	No	1Day trek
		Vunga		653	Gaulim HC	590	116	288	24.02.23	1	1	0	5	RENB	RoadTrek 2das
21	KADUALUNG STTLEMNT		1,593	1,908		1,783	351	804		4	4	1	169		
		1.Kadualung Settl. No. 1	1,115	976	Gaulim HC	706	161	329	26.02.23	1	1	0	21	RENB	Road
		2.Misbael Pltn.	55	203	Gaulim HC	280	49	123	26.02.23	1	1	0	49	RENB	Road
		3.Willtane Pltn	198	241	Gaulim HC	269	48	121	26.02.23	1	1	0	45	RENB	Road
		4.Nengmutka	225	488	Gaulim HC	528	93	231	26.02.23	1	1	1	54	RENB	Road
22	KADALAUNG No 2		1,602	1,231		1,559	332	744		2	2	1	9		
		1.Waiware Settl.	463	0	Gaulim HC	209	50	97	23.02.23	1	1	1	2	RENB	Road
		2.Kadualung No. 2	1,140	1,231	Gaulim HC	1,350	282	647	23.02.23	1	1	0	7	RENB	Road
23	AWUNGI		310	949		872	249	425		3	2	2	105		
		1.Awungi	101	487	Gaulim HC	689	210	338	24.02.23	1	1	1	80	RENB	Road
		2.Senmagi Settl.	209	435	Gaulim HC	183	39	87	24.02.23	1	1	1	25	RENB	Road
		Kalaska		28	Gaulim HC					1					Included Under Awungi
24	GAULIM		1,558	2,332		2,435	646	1,153		3	3	2	83		
		1.Gaulim	1,333	1,512	Gaulim HC	1,442	395	704	26.02.23	1	1	1	60	RENB	Different Dates of Dist.
		2.Gaulim Teachers Coll.	225	192	Gaulim HC	198	31	89	25.02.23	1	1	1	15	RENB	Road
		Rabata	628	795	Gaulim HC	795	220	360	24.02.23	1	1	0	8	RENB	Road
25	KAINAGUNAN		1,156	964		1,160	265	560		1	1	1	5		
		1.Kainagunan	1,156	964	Gaulim HC	1,160	265	560	25.02.23	1	1	1	5	RENB	Road
26	IVERE		604	546		527	145	241		1	1	0	0		
		1.Ivere	604	546	Gaulim HC	527	145	241	25.02.23	1	1	0	0	RENB	Road
27	MALABUNGA		636	658		610	150	294		2	2	0	0		
		1.Malabunga 1	415	489	Gaulim HC	433	100	212	25.02.23	1	1	0	0	RENB	Road
		2.Malabunga 2	222	169	Gaulim HC	177	50	82	25.02.23	1	1	0	0	RENB	Road
LASSUL BAINING RURAL			14,524	16,256		15,402	3,144	7,990		54	27	0	73	4	
1	PONIAR \ KANAKO		372	310		293	57	146		1	1	0	45		
		1.Kanako	372	310	Lasul HC	293	57	146	03.02.23	1	1	0	45		Boat
2	MOBILIM		367	859		353	78	192		2	0	0	0		
		1.Mobilim	310	561	Open Bay HC	353	78	192	03.02.23	1	0	0	0	NIL	Road
		2.Toriu Pltn	57	0	Open Bay HC					1					Included Under Open Bay Timbers
		3. Bush camp & Camp 3		299	Open Bay HC										Non Existent
3	TAKIS		1,049	1,027		835	167	426		3	3	0	0		
		1.Takis	611	574	Lasul HC	565	114	285	03.02.23	1	1	0	0		Road
		2.Notremal	344	298	Lasul HC	182	37	93	01.02.23	1	1	0	0		Road
		3.Usewit Pltn	94	155	Lasul HC	88	16	48	01.02.23	1	1	0	0		Road
4	NANGAS		760	703		638	124	405		6	5	0	0		
		1.Nangas	227	273	Lasul HC	280	49	142	02.03.23	1	1	0	0		Boat
		2.Asaling Pltn	188	120	Lasul HC	82	14	116	31.01.23	1	1	0	0		Boat
		3.Gavit Pltn	85	124	Lasul HC					1					Included Under Ding
		4.Tovanakus Pltn	117	75	Lasul HC	79	19	43	01.02.23	1	1	0	0		Boat
		5.Lilinkaia	67	112	Lasul HC	58	16	32	03.02.23	1	1	0	0		Boat

LLG	WARD	Village/ Census Unit	Estimated 2022 Population Based on 2000 Census	Estimated 2022 Population Based on 2019 Data	Health Centre	Population Surveyed	House Holds Surveyed	Nets Issued	Date Of Distribution	Villages	Digital	Bmobile	Houses With Radios	Radio Networks	Comments
		6.Ding Settlement	76	0	Lasul HC	139	26	72	01.02.23	1	1	0	0		Boat
5	TRAIWARA		546	452		412	90	223		2	2	0	0		
		1.Traiwara	447	207	Lasul HC	221	50	118	31.01.23	1	1	0	0		Road
		2.Nambung Pltn	99	244	Lasul HC	191	40	105	30.01.23	1	1	0	0		Road
6	LASSUL		945	796		654	146	349		5	2	0	0		
		1.Lassul 1 & 2	330	392	Lasul HC	403	96	215	30.01.23	1	1	0	0		Road
		2.Neinduk Pltn	186	171	Lasul HC	251	50	134	30.01.23	1	1	0	0		Road
		3.New Kavern Pltn	213	0	Lasul HC					1					Included Under Neinduk
		4.Lassul Sdo	117	0	Lasul HC					1					Included Under Lassul
		5.Pikus Camp	99	234	Lasul HC					1					Included Under Lassul
7	PUKTAS		225	324		280	54	130		1	1	0	0		
		Puktas	225	324	Lasul HC	280	54	130	01.02.23	1	1	0	0		Road
8	KARO		645	631		537	105	269		2	2	0	0		
		Karo	360	416	Lasul HC	454	89	228	31.01.23	1	1	0	0		Road
		New New Massawa Pltn	285	215	Lasul HC	83	16	41	31.01.23	1	1	0	0		Road
9	MATANAKUNAI		991	2,552		2,862	604	1,479		12	2	0	0		
		1.Matanakunai	517	1,254	Open Bay HC	1,081	206	545	01.02.23	1					Road
		2.Sai Forestry	89	211	Open Bay HC	160	27	80	01.02.23	1	0	0	0		Road
		3.Rice Camp	122	257	Open Bay HC	183	37	93	01.02.23	1	0	0	0		Road
		4.Watu Logging Camp		313	Open Bay HC	94	19	49	02.03.23	1	1	0	0		Road
		4.Vunapeo	262	146	Open Bay HC					1					Included Under Matanakunai
		6.Pale		126	Open Bay HC	138	31	76	01.02.23	1	0	0	0		Road
		7.Pandi		246	Open Bay HC	62	21	42	02.02.23	1	0	0	0		Road
		8.Mavulu		NEW	Open Bay HC	157	30	81	01.02.23	1	0	0	0		Road
		9.Baea		NEW	Open Bay HC	229	50	115	02.02.23	1	1	0	0		Road
		10.Toki		NEW	Open Bay HC	467	122	246	02.03.23	1	0	0	0		Road
		11.Bao'bau		NEW	Open Bay HC	185	39	95	02.02.23	1	0	0	0		Road
		12.Silaleve/Loiloi		NEW	Open Bay HC	106	22	57	02.02.23	1	0	0	0		Road
10	MANDRAMBIT		473	809		943	176	470		3	0	0	0		
		1.Mandrambit	339	579	Open Bay HC	559	106	276	03.02.23	1	0	0	0		Road
		2.Avungi	135	230	Open Bay HC	161	26	81	03.02.23	1	0	0	0	RENB	Road
		3. Gabriel Camp (Amgerka)		NEW	Open Bay HC	223	44	113	03.02.23	1	0	0	0		Road
11	WILAMBENKI \ POINIARA		975	841		767	149	382		1	1	0	10		
		1.Wilambenki/Poiniara	899	531	Lasul HC	767	149	382	03.02.23	1	1	0	10		Road
		2.Pondo Pltn	76	310	Lasul HC										Plantation Closed
12	PANARAPKA		195	179		174	38	85		2	0	0	0		
		1.Panarapka	147	0	Lasul HC	174	38	85	03.02.23	1	0	0	0		Boat
		2.Kolwara	48	179	Lasul HC					1					Included Under Panarapka
13	LAAN		505	518		621	135	318		1	0	0	0		
		1.Laan	505	518	Lasul HC	621	135	318	30.01.23	1	0	0	0		Road/3-4 Hr Trek
14	YALAM		470	77		169	26	81		1	0	0	2		
		1.Yalam	470	77	Raunsepna HC2	169	26	81	13.03.23	1	0	0	2	98.6fm	Road/3-4 Hr Trek
15	KOMGI		464	335		612	90	284		1	0	0	16		
		1.Komgi	464	335	Raunsepna HC2	612	90	284	13.03.23	1	0	0	16	98.6fm	Road/3-4 Hr Trek
16	NAVUI \ MAMPIT		968	1,117		976	200	497		1	0	0	0		
		1.Navui/Mamapit	968	1,117	Lasul HC	976	200	497	31.02.23	1	0	0	0		Road
17	OPEN BAY TIMBERS		1,076	1,472		1,588	348	852		1	0	0	0		
		1.Open Bay Timbers	1,076	1,472	Open Bay HC	1,588	348	852	01.02.23	1	0	0	0		Road (Within Vicinity)
18	WATMEKI		992	525		519	98	266		3	3	0	0		
		1.Watmetki	523	256	Lasul HC	254	50	128	03.02.23	1	1	0	0		Boat
		2.Stochom Pltn.	257	177	Lasul HC	83	13	42	03.02.23	1	1	0	0		Boat
		3.Kuredal	213	91	Lasul HC	182	35	96	03.02.23	1	1	0	0		Boat
19	KOLOPOM STTLEMNT		751	829		538	110	273		3	3	0	0		
		1.Kolopom Settlement	335	201	Lasul HC	257	56	134	30.01.23	1	1	0	0		Boat
		2.Basis	287	443	Lasul HC	281	54	139	30.01.23	1	1	0	0		Boat
		3.Bolwara	129	185	Lasul HC					1	1	0	0		Boat
20	WARAKINDAM		817	1,403		1,257	278	670		1	1	0	0		
		1.Warakindam	817	1,403	Lasul HC	1,257	278	670	31.01.23	1	1	0	0		Road
21	MOROKINDAM		395	183		0	0	0		0	0	0	0		
		1.Manimbu Pltn	142	0	Lasul HC										No people living, plantation taken over by land owners
		Seregi Logging	253	183	Lasul HC										No people living, plantation taken over by land owners
		Kolwara		0	Lasul HC										Same Name as in Ward 12
22	MOBISBERG PLANTATATION		542	316		374	71	193		2	1	0	0		
		1.Mobisberg Pltn.	69	0	Lasul HC					1					Included Under Kipka
		2.Kipla	473	316	Lasul HC	374	71	193	31.01.23	1	1	0	0		Road
				0											
LIVUAN \ REIMBER RURAL			38,385	33,606		31,869	7,592	16,582		36	36	17	5,473	36	
1	RABABAT		1,786	1,330		1,561	338	819		1	1	1	265		
		1.Rababat	1,786	1,330	Livuan HC	1,561	338	819	17.03.23	1	1	1	265	NBC	Road
2	VUNAIROTO		2,059	1,758		1,469	329	792		1	1	0	265		
		1.Vunairoto	2,059	1,758	Livuan HC	1,469	329	792	13.03.23	1	1	0	265	NBC	Road
3	KABAKADA		1,257	984		1,161	296	636		1	1	1	246		
		1.Kabakada	1,257	984	Livuan HC	1,161	296	636	15.03.23	1	1	1	246	NBC	Road
4	NABATA		1,024	860		851	213	465		1	1	0	195		
		1.Nabata Village	1,024	860	Livuan HC	851	213	465	14.03.23	1	1	0	195	NBC	Road
5	TOBOINA		948	853		818	200	417		1	1	0	42		
		Toboina Village	948	853	Livuan HC	818	200	417	13.03.23	1	1	0	42	NBC	Road
6	RALUANA No 3		948	695		480	83	248		1	1	1	143		
		1.Raluana No. 3	948	695	Livuan HC	480	83	248	16.03.23	1	1	1	143	NBC	Road
7	PUTANAGOROROI		1,076	933		1,118	300	592		1	1	1	271		
		1.Putanagororoi Vill.	1,076	933	Livuan HC	1,118	300	592	14.03.23	1	1	1	271	NBC	Road
8	VUNALIR/Vunamarita		936	797		711	181	388		1	1	1	149		
		1.Vunalir/Vunamarita	936	797	Livuan HC	711	181	388	17.03.23	1	1	1	149	NBC	Road
9	RATONGOR		2,075	2,178		2,072	409	1,065		1	1	1	323		
		1.Ratonor Village	2,075	2,178	Livuan HC	2,072	409	1,065	15.03.23	1	1	1	323	NBC	Road

LLG	WARD	Village/ Census Unit	Estimated 2022 Population Based on 2000 Census	Estimated 2022 Population Based on 2019 Data	Health Centre	Population Surveyed	House Holds Surveyed	Nets Issued	Date Of Distribution	Villages	Digicel	Bmobile	Houses With Radios	Radio Networks	Comments
10	VUNADAWAI		1,953	1,883		1,732	450	734		1	1	1	289		
		1.Vunadawai Village	1,953	1,883	Livuan HC	1,732	450	734	18.03.23	1	1	1	289	NBC	Road
11	LUNGALUNGA		1,072	973		1,220	292	625		1	1	1	264		
		Lungalunga Village	1,072	973	Livuan HC	1,220	292	625	18.03.23	1	1	1	264	NBC	Road
12	MAILIVUAN		603	590		539	100	280		1	1	1	46		
		1.Mailivuan	603	590	Livuan HC	539	100	280	18.03.23	1	1	1	46	NBC	Road
13	VOLAVOLO		2,137	1,808		1,918	536	1,020		2	2	2	435		
		1.Volavolo Village	2,095	442	Livuan HC	582	150	308	18.03.23	1	1	1	114	NBC	Road
		2.Kabaira Vocational	43	1,366	Livuan HC	1,336	386	712	18.03.23	1	1	1	321	NBC	Road
14	KURAIIP		1,515	1,222		886	182	475		1	1	0	156		
		1.Kuraip	1,515	1,222	Vunapaka HC	886	182	475	20.03.23	1	1	0	156	NBC	Fight
15	VUNALAKA		1,343	1,452		1,158	269	590		1	1	1	152		
		1.Vunataka	1,343	1,452	Vunapaka HC	1,158	269	590	14.03.23	1	1	1	152	NBC	Road
16	VUNAKALKALULU		1,161	1,378		1,154	166	592		1	1	0	95		
		Vunakalkalulu	1,161	1,378	Vunapaka HC	1,154	166	592	13.03.23	1	1	0	95	NBC	Road
17	TARANGA		969	589		716	187	389		1	1	0	39		
		Taranga	969	589	Vunapaka HC	716	187	389	15.03.23	1	1	0	39	NBC	Road
18	RABURBUR		1,297	621		849	199	454		1	1	0	131		
		Raburbur	1,297	621	Vunapaka HC	849	199	454	17.03.23	1	1	0	131	NBC	Road
19	RAKATOP		711	671		683	140	355		1	1	0	80		
		Rakatop	711	671	Vunapaka HC	683	140	355	18.03.23	1	1	0	80	NBC	Road
20	RAMALMAL		1,427	1,224		1,092	285	568		2	2	0	270		
		Ramalmal	1,283	1,224	Vunapaka HC	945	246	493	19.03.23	1	1	0	234	NBC	Road
		Vunabukubuk	144	0	Vunapaka HC	147	39	75	20.03.23	1	1	0	36	NBC	Road
21	VUNAITING		766	785		830	200	434		1	1	0	72		
		Vunaiting	766	785	Vunapaka HC	830	200	434	17.03.23	1	1	0	72	NBC	Road
22	VUNAKAINALAMA		828	763		707	150	358		1	1	0	140		
		Vunakainalama	828	763	Vunapaka HC	707	150	358	18.03.23	1	1	0	140	NBC	Road
23	TOUALEKA		1,599	1,190		1,218	294	653		1	1	1	213		
		Toualeka	1,599	1,190	Vunapaka HC	1,218	294	653	17.03.23	1	1	1	213	NBC	Road
24	RAMALE		1,108	923		801	158	416		1	1	1	105		
		Ramale	1,108	923	Vunapaka HC	801	158	416	17.03.23	1	1	1	105	NBC	Road
25	KIKITABU		1,184	1,011		1,055	250	547		1	1	0	197		
		Kikitabu	1,184	1,011	Vunapaka HC	1,055	250	547	19.03.23	1	1	0	197	NBC	Road
26	VUNAUAITING		1,643	2,201		1,818	448	933		1	1	0	288		
		Vunaulaiting	1,643	2,201	Vunapaka HC	1,818	448	933	19.03.23	1	1	0	288	NBC	Road
27	TOTOVEL		3,096	1,928		1,643	444	878		4	4	3	308		
		1.Totovel Vill.	1,607	969	Vunapaka HC	1,143	331	605	19.03.23	1	1	0	241	NBC	Road
		2.George Brown H/S	223	559	Vunapaka HC	151	33	80	22.03.23	1	1	1	23	NBC	Road
		3.Rarongo Theo Coll.	799	275	Vunapaka HC	239	50	134	20.03.23	1	1	1	31	NBC	Road
		4.Pasters Coll.	466	125	Vunapaka HC	110	30	59	21.03.23	1	1	1	13	NBC	Road
		5.Pasters Coll.		0	Vunapaka HC										Duplicate
28	RADAKADA		686	1,026		850	243	451		2	2	0	100		
		Radakada	608	1,026	Vunapaka HC	682	193	356	12.03.23	1	1	0	85	NBC	Road
		Raval Voc. Centre	78	0	Vunapaka HC	168	50	95	12.03.23	1	1	0	15	NBC	Road
29	VUNAPAKA		1,179	978		759	250	408		2	2	0	194		
		Vunapaka	1,111	978	Vunapaka HC	589	200	316	15.03.23	1	1	0	152	NBC	Road
		Vunapaka Health Centre	67		Vunapaka HC	170	50	92	15.03.23	1	1	0	42	NBC	Road
VUNADIDIR \ TOMAR RURAL			35,718	36,199		33,141	7,629	16,836		38	37	24	1,510	37	
1	RABAGI No. 1		865	550		684	0	360		1	1	1	0		
		Rabagi No. 1	865	550	Tapipipi HC	684		360	05.02.23	1	1	1		NBC	Road
2	RABAGI No. 2		1,421	1,204		1,190	249	490		1	1	1	0		
		Rabagi No. 2	1,421	1,204	Tapipipi HC	1,190	249	490	05.02.23	1	1	1		NBC	Road
3	RAPITOK No. 1		1,129	1,001		1,235	300	663		1	1	1	0		
		Rapitok No.1	1,129	1,001	Tapipipi HC	1,235	300	663	01.02.23	1	1	1		NBC	Road
4	RAPITOK No. 2		533	408		425	132	240		1	1	1	0		
		Rapitok No. 2	533	408	Tapipipi HC	425	132	240	01.02.23	1	1	1		NBC	Road
5	RAPITOK No. 3		1,824	1,338		1,085	298	582		1	1	1	0		
		Rapitok No. 3	1,824	1,338	Tapipipi HC	1,085	298	582	01.02.23	1	1	1		NBC	Road
6	RAPITOK No. 4		1,416	1,222		1,188	340	635		1	1	1	0		
		Rapitok No. 4	1,416	1,222	Tapipipi HC	1,188	340	635	05.02.23	1	1	1		NBC	Road
7	RATAVUL		1,735	2,114		1,480	325	767		2	2	2	0		
		Ratavul 1	1,083	1,376	Napapar HC2	757	248	405	31.01.23	1	1	1		NBC	Road
		Ratavul 2	652	738	Napapar HC2	723	77	362	31.01.23	1	1	1		NBC	Road
8	VUNAKABI		883	1,133		538	196	349		1	1	1	0		
		Vunakabi	883	1,133	Tapipipi HC	538	196	349	06.02.23	1	1	1		NBC	Road
9	TANAKA		1,237	3,375		3,387	583	1,693		3	3	3	92		
		Tanaka	1,237	1,320	Tapipipi HC	1,465	333	705	06.02.23	1	1	1	92	NBC	Road
		Raim		869	Tapipipi HC	1,045		514	06.02.23	1	1	1		NBC	Road
		Gunanur		1,186	Tapipipi HC	877	250	474	06.02.23	1	1	1		NBC	Road
10	TAULIL No. 1		1,909	1,836		705	297	411		1	1	1	0		
		Taulil No. 1	1,909	1,836	Tapipipi HC	705	297	411	02.02.23	1	1	1		NBC	Road
11	TAULIL No. 2		1,274	1,674		1,344	498	765		1	1	1	0		
		Tauli No. 2	1,274	1,674	Tapipipi HC	1,344	498	765	02.02.23	1	1	1		NBC	Road
12	VUNADIDIR		1,547	1,380		1,396	322	733		2	2	2	0		
		Vunadidir	1,418	1,380	Tapipipi HC	1,214	283	638	31.01.23	1	1	1		NBC	Road
		Vunadidir Training Cntr	129	0	Tapipipi HC	182	39	95	31.01.23	1	1	1		NBC	Road
13	BITAKAPUK No.1		2,541	2,463		2,755	595	1,418		3	3	2	331		
		Bitakapuk No. 1	1,216	1,460	Paparatava HC	2,146	462	1,098	13.03.23	1	1	1	259	Radio ENB	Road
		Toguata Police Barracks	881	779	Paparatava HC	446	83	234	16.03.23	1	1	1	61	Radio ENB	Road
		Tokota Sett.	445	224	Paparatava HC	163	50	86	13.03.23	1	1	0	11	Radio ENB	Road
14	BITAKAPUK No. 2		1,251	1,167		1,037	239	518		2	2	1	56		
		Bitakapuk No. 2	693	490	Paparatava HC	496	124	249	12.03.23	1	1	0	42	Radio ENB	Road
		Bitakapuk No. 3	558	677	Paparatava HC	541	115	269	13.03.23	1	1	1	14	Radio ENB	Road
15	TAGITAGI No. 1		1,978	1,895		2,003	308	1,011		1	1	1	147		
		Tagitagi No.1	1,978	1,895	Paparatava HC	2,003	308	1,011	13.03.23	1	1	1	147	Radio ENB	Road
16	TAGITAGI No. 2		929	817		553	180	308		1	1	0	18		
		Tagitagi No.2	929	817	Paparatava HC	553	180	308	16.03.23	1	1	0	18	Radio ENB	Road

LLG	WARD	Village/ Census Unit	Estimated 2022 Population Based on 2000 Census	Estimated 2022 Population Based on 2019 Data	Health Centre	Population Surveyed	House Holds Surveyed	Nets Issued	Date Of Distribution	Villages	Digicel	Bmobile	Houses With Radios	Radio Networks	Comments
17	WAIIRIKI	No. 1	1,425	1,164		981	72	414		1	1	0	30		
		Wairiki No. 1	1,425	1,164	Paparatava HC	981	72	414	10.03.23	1	1	0	30	Radio ENB	Road
18	WAIIRIKI	No. 2	1,088	1,112		1,140	316	599		1	1	0	57		
		Wairiki No. 2	1,088	1,112	Paparatava HC	1,140	316	599	11.03.23	1	1	0	57	Radio ENB	Road
19	WAIIRIKI	No. 3	1,714	2,264		2,110	462	949		3	3	2	297		
		Wairiki No. 3	1,370	1,588	Paparatava HC	1,497	321	669	11.03.23	1	1	1	217	Radio ENB	Road
		Wairiki Pltn	80	453	Paparatava HC	423	91	189	13.03.23	1	1	0	40	Radio ENB	Road
		Oisca	80	92	Paparatava HC	190	50	91	12.03.23	1	1	1	40	Radio ENB	Road
		Watersmeet Pltn	184	130	Paparatava HC										Closed
20	WAIIRIKI	No.4	1,326	1,237		1,132	165	572		1	1	0	0		
		Wairiki No. 4	1,326	1,237	Paparatava HC	1,132	165	572	11.03.23	1	1	0	0	Radio ENB	Road
21	VIVIRAN		1,288	1,663		1,653	494	822		1	1	1	37		
		Viviran	1,288	1,663	Paparatava HC	1,653	494	822	09.03.23	1	1	1	37	Radio ENB	Road
22	VIVIRAN	No. 2	702	432		468	140	251		1	1	1	0		
		Viviran No. 2	702	432	Paparatava HC	468	140	251	10.03.23	1	1	1	0	Radio ENB	Road
23	VUNAKAUR		1,402	1,146		1,173	338	611		1	1	0	69		
		Vunakaur	1,402	1,146	Paparatava HC	1,173	338	611	07.03.23	1	1	0	69	Radio ENB	Road
24	BAIE		815	614		651	150	323		1	1	0	102		
		Baie	815	614	Paparatava HC	651	150	323	07.03.23	1	1	0	102	Radio ENB	Road
25	PAPALABA		615	750		660	150	289		1	1	0	119		
		Papalaba Village	615	750	Paparatava HC	660	150	289	09.03.23	1	1	0	119	Radio ENB	Road
26	VUNARARERE		571	689		695	148	342		1	1	0	102		
			571	689	Paparatava HC	695	148	342	08.03.23	1	1	0	102	Radio ENB	Road
27	TAMANAIIRIK	No1	1,301	1,044		1,028	249	501		1	1	0	42		
		Tamanaraik No. 1	1,301	1,044	Paparatava HC	1,028	249	501	10.03.23	1	1	0	42	Radio ENB	Road
28	TAMAINIRIK	No 2	509	507		445	83	220		1	1	0	11		
		Tamanaraik No. 2	509	507	Paparatava HC	445	83	220	09.03.23	1	1	0	11	Radio ENB	Road
29	RABATA		491	0		0	0	0		1	0	0	0		
		Rabata	491	0	Paparatava HC					1					Covered under Gaulim SHC

ANNEX TWO

EAST NEW BRITAIN PROVINCE KOKOPO POPULATION 2022 LLIN DISTRIBUTION SUMMARY SHEET

LLG	WARD	Village/ Census Unit	Estimated 2022 Population from 2000 Census	2022 Estimated from 2019 Data	Health Centre	Population Surveyed	House Holds Surveyed	Nets Issued	Date Of Distribution	Villages	Digicel	Bmobile	Houses With Radios	Radio Networks	Comments
KOKOPO			106,237	106,237		96,945	19,480	49,911		136	131	79	4,200	128	
BITAPAKA RURAL			26,886	28,348		25,556	4,855	12,770		49	46	18	11	43	
	TAUI No1		1,823	2,008		1,704	317	878		1	1	1	0		
	1.Taui No.1		1,823	2,008	Bitapaka HC	1,704	317	878	19.04.23	1	1	1	0	RENB	Road
	TAUI No2		1,926	1,923		1,905	368	954		1	1	1	0		
	Taui No. 2		1,926	1,923	Bitapaka HC	1,905	368	954	16.04.23	1	1	1	0	RENB	Road
	BALADA		761	873		668	126	345		3	1	1	0		
	1.Balada		530	593	Bitapaka HC	668	126	345	17.04.23	1	1	1	0		Road
	2.Bitapaka War Cemetry		75	0	Bitapaka HC					1					Included in Balada
	3.Bitapaka Govt. Stn.		157	280	Bitapaka HC					1					Included in Balada
	RATAVUL		756	733		748	139	360		1	1	1	0		
	1.Ratavul		756	733	Bitapaka HC	748	139	360	16.04.23	1	1	1	0	RENB	Road
	RALUBANG		1,400	1,764		1,246	255	623		1	1	1	0		
	1.Ralubang		1,400	1,467	Bitapaka HC	1,246	255	623	16.04.23	1	1	1	0	RENB	Road
	2. Vunabang Pltn			298	Bitapaka HC										Closed
	TOGORO		776	772		823	194	416		1	1	1	0		
	1.Togoro		776	772	Bitapaka HC	823	194	416	16.04.23	1	1	1	0	RENB	Road
	TABUNA		958	1,020		1,096	243	549		2	2	2	0		
	1.Tabuna		583	668	Bitapaka HC	745	143	373	16.04.23	1	1	1	0	RENB	Road
	2.Tabuna Pltn		375	352	Bitapaka HC	351	100	176	08.04.23	1	1	1	0	RENB	Road
	KATAKATAI		1,113	894		1,186	216	594		2	2	0	5		
	1.Katakatai		750	634	Bitapaka HC	808	137	404	17.04.23	1	1	0	5	RENB	Road
	2.Ralubang Pltn		362	260	Bitapaka HC	378	79	190	08.04.23	1	1	0	0		Road
	VUNABAUR		792	1,158		1,170	213	588		1	1	0	0		
	1.Vanubaur		792	1,158	Mope HC	1,170	213	588	08.04.23	1	1	0	0	RENB	Road
	WATWAT		763	936		903	179	456		1	1	0	0		
	1.Watwat		763	936	Mope HC	903	179	456	08.04.23	1	1	0	0	RENB	Road
	LONDIP		1,753	1,065		616	104	312		2	2	1	6		
	1.Londip		399	254	Mope HC	230	36	115	08.04.23	1	1	0	0	RENB	Road
	2.Vimy Pltn		727	601	Vunapope HC	386	68	197	31.03.23	1	1	1	6		Road
	3.Varenula Pltn		107	0	Mope HC										Non Existant
	4.Watwat Pltn		138	0	Mope HC										Non Existant
	5.Tanua Plt		75	0	Mope HC										Non Existant
	6.Toberas 2 Pltn		193	98	Mope HC										Non Existant
	7.Gilalum Pltn		115	112	Mope HC										Non Existant
	GANAI		1,291	1,373		1,234	222	614		1	1	0	0		
	1.Ganai		1,291	1,373	Mope HC	1,234	222	614	09.04.23	1	1	0	0	RENB	Road
	MARMAR		1,400	1,538		1,432	273	717		5	5	0	0		
	1.Marawa		532	210	Mope HC	212	37	106	08.04.23	1	1	0	0	RENB	Road
	2.Marmar		517	592	Mope HC	551	117	276	08.04.23	1	1	0	0	RENB	Road
	3.Kamar		351	290	Mope HC	261	47	131	08.04.23	1	1	0	0	RENB	Road
	Lelenge			325	Mope HC	280	50	140	08.04.23	1	1	0	0	RENB	Road
	Ralokor			122	Mope HC	128	22	64	08.04.23	1	1	0	0	RENB	Road
	MENEBONBON		475	501		330	49	165		1	1	0	0		
	1.Menebonbon		475	501	Bitapaka HC	330	49	165	14.04.23	1	1	0	0	RENB	Road
	BILUR		839	828		934	200	462		2	2	0	0		
	1.Bilur		408	412	Bitapaka HC	474	109	237	14.04.23	1	1	0	0	RENB	Road
	2.Karu		432	407	Bitapaka HC	460	91	225	14.04.23	1	1	0	0	RENB	Road
	3. Kabanga Pltn			9	Bitapaka HC										Closed
	KORAI		750	764		524	115	256		1	1	0	0		
	1.Korai		750	764	Bitapaka HC	524	115	256	15.04.23	1	1	0	0	RENB	Road
	KAMAKAMAR		441	742		515	101	255		1	1	0	0		
	1.Kamakamar		441	742	Bitapaka HC	515	101	255	15.04.23	1	1	0	0	RENB	Road
	BIRAR		674	1,060		887	160	432		1	1	0	0		
	1.Birar		674	1,060	Bitapaka HC	887	160	432	15.04.23	1	1	0	0	RENB	Road
	MAKURAPAU		2,132	1,788		1,553	313	763		5	4	0	0		
	1.Makurapau		1,129	884	Bitapaka HC	962	200	479	15.04.23	1	1	0	0	RENB	Road
	2.Kulaun (Kulon)		419	315	Bitapaka HC	278	50	132	15.04.23	1	1	0	0	RENB	Road
	3.Kulon Pltn		58	181	Bitapaka HC	228	46	109	15.04.23	1	1	0	0	RENB	Road
	4.Makurapau Pltn		253	235	Bitapaka HC					1					Included Under Makurapau
	5.Malumat		273	173	Bitapaka HC	85	17	43	15.04.23	1	1	0	0	RENB	Road
	RAINAU		1,673	1,501		1,487	229	734		2	2	0	0		
	1.Rainau		1,249	1,293	Bitapaka HC	1,238	196	614	17.04.23	1	1	0	0	RENB	Road
	2.Rainau 1 Pltn		424	209	Bitapaka HC	249	33	120	17.04.23	1	1	0	0	RENB	Road
	MALAKUNA		1,946	2,385		2,120	394	1,060		5	5	0	0		
	1.Malakuna		898	671	Bitapaka HC	759	138	381	15.04.23	1	1	0	0	RENB	Road
	2.Kabagap		432	575	Bitapaka HC	497	100	249	15.04.23	1	1	0	0	RENB	Road
	3.Toburute Pltn		441	552	Bitapaka HC	535	100	268	15.04.23	1	1	0	0	RENB	Road
	4. Bitaruga		177	400	Bitapaka HC	128	19	64	15.04.23	1	1	0	0	RENB	Road
	5. Dipdip			187	Bitapaka HC	201	37	98	15.04.23	1	1	0	0	RENB	Road
	ULAVEO		2,444	2,720		2,475	445	1,237		9	9	9	0		
	1.Tokua Pltn		424	315	Bitapaka HC	290	46	145	16.04.23	1	1	1	0	RENB	Road
	2.Tokua Airport		195	118	Bitapaka HC	83	15	42	16.04.23	1	1	1	0	RENB	Road
	3.Ulave Pltn		572	493	Bitapaka HC	484	83	243	16.04.23	1	1	1	0	RENB	Road
	4.Wata Pltn		242	172	Bitapaka HC	268	50	134	16.04.23	1	1	1	0	RENB	Road
	5.Niuwok Pltn		162	570	Bitapaka HC	493	100	244	16.04.23	1	1	1	0	RENB	Road
	6.Tovuru Pltn		293	244	Bitapaka HC	140	20	70	16.04.23	1	1	1	0	RENB	Road
	7.Ulaveo Pltn 2		555	228	Bitapaka HC	271	50	136	16.04.23	1	1	1	0	RENB	Road
	8.Ulaveo Industrial Area			338	Bitapaka HC	179	31	90	16.04.23	1	1	1	0	RENB	Road
	9.Boots/Karanas			241	Bitapaka HC	267	50	133	16.04.23	1	1	1	0	RENB	Road
				0											
DUKE OF YORK RURAL			18,740	14,750		14,646	3,213	7,462		25	24	0	757	24	
	1.MAKADA		1,160	848		829	164	434		2	2	0	25		
	1.Nagaila		655	390	Molot HC	374	64	189	31.03.23	1	1	0	3	RENB	Boat
	2.Palipal		504	458	Molot HC										

LLG	WARD	Village/ Census Unit	Estimated 2022 Population from 2000 Census	2022 Estimated from 2019 Data	Health Centre	Population Surveyed	House Holds Surveyed	Nets Issued	Date Of Distribution	Villages	Digicel	Bmobile	Houses With Radios	Radio Networks	Comments
	2.MOLOT		1,287	834		889	202	481		2	2	0	37		
		1.Uruk	444	323	Molot HC	333	74	185	31.03.23	1	1	0	24	RENB	Road.Boat
		2.Molot	843	512	Molot HC	556	128	296	31.03.23	1	1	0	13	RENB	Road.Boat
	3.MAREN		694	505		469	100	241		1	1	0	29		
		1.Maren	694	505	Molot HC	469	100	241	31.03.23	1	1	0	29	RENB	Boat.Road
	4.BUTLIVUAN		1,247	985		955	219	498		2	2	0	23		
		1.Butlivuan	566	491	Molot HC	516	119	267	31.03.23	1	1	0	23	RENB	Road.Boat
		2.Pir Top	681	494	Molot HC	439	100	231	31.03.23	1	1	0	0	RENB	Road.Boat
	5.WAIRA		1,074	658		562	150	298		2	2	0	60		
		1.Waira	464	244	Molot HC	247	50	127	31.03.23	1	1	0	12	RENB	Road.Boat
		2.Watara	610	414	Molot HC	315	100	171	31.03.23	1	1	0	48	RENB	Road.Boat
	6.NABUAL		852	561		548	98	275		1	1	0	0		
		1.Nabual	852	561	Molot HC	548	98	275	31.03.23	1	1	0	0	RENB	Boat
	7.INOLO		1,014	676		848	199	433		2	2	0	49		
		1.Inolo	634	417	Molot HC	436	100	219	28.03.23	1	1	0	0	RENB	Boat
		2.Kabatirai	381	259	Molot HC	412	99	214	28.03.23	1	1	0	49	RENB	Boat
	8.KUMAINA		1,957	1,512		1,577	342	786		2	2	0	115		
		1.Kumaina	299	289	Molot HC	359	61	181	28.03.23	1	1	0	40	RENB	Road.Boat
		2.Nakukur	1,659	1,223	Molot HC	1,218	281	605	28.03.23	1	1	0	75	RENB	Road.Boat
	9.KABILOMO		1,693	1,204		1,141	283	611		1	1	0	39		
		1.Kabilomo	1,693	1,204	Molot HC	1,141	283	611	31.03.23	1	1	0	39	RENB	Road.Boat
	10.URAKUKUR		614	435		401	99	213		1	1	0	0		
		1.Urakukur	614	435	Vatnabara HC	401	99	213	06.04.23	1	1	0	0	RENB	Road
	11.KABABIAI		1,637	1,401		1,185	223	591		1	1	0	0		
		1.Kababiai	1,637	1,401	Vatnabara HC	1,185	223	591	31.03.23	1	1	0	0	RENB	Road.Boat
	12.MUALIM		750	592		541	119	262		1	1	0	25		
		1.Mualim	750	592	Vatnabara HC	541	119	262	28.03.23	1	1	0	25	RENB	Boat
	13.VIRIAN		1,411	1,770		1,714	318	845		2	2	0	143		
		1.Virian	918	907	Vatnabara HC	911	174	442	28.03.23	1	1	0	133	RENB	Boat
		2.Rakanda Pltn	493	863	Vatnabara HC	803	144	403	28.03.23	1	1	0	10	RENB	Road.Boat
	14.PALPAL		1,449	1,341		1,433	350	714		1	1	0	191		
		1.Palpal	1,449	1,341	Vatnabara HC	1,433	350	714	28.03.23	1	1	0	191	RENB	Boat
	15.UTUAN		1,207	821		887	187	452		3	2	0	13		
		1.Utan No. 1	894	726	Vatnabara HC	823	170	415	28.03.23	1	1	0	6	RENB	Boat
		2.Ulu Plantation	313	39	Vatnabara HC					1					Included Under Utan No 1
		3. Vatnabara Station		56	Vatnabara HC	64	17	37	28.03.23	1	1	0	7	RENB	Boat
	16.KARAWARA		692	606		667	160	328		1	1	0	8		
		1.Karawara	692	606	Vatnabara HC	667	160	328	28.03.23	1	1	0	8	RENB	Boat
				0											
	KOKOPO \ VUNAMAMI URBAN		36,295	42,442		40,759	8,013	21,258		45	44	44	2,204	44	
	1.KARAVI		1,360	1,778		1,396	300	735		1	1	1	0		
		1.Karavi	1,360	1,778	Butuwini HC2	1,396	300	735	25.04.23	1	1	1	0	RENB,FM	Road
	2.VUNAMAMI		4,004	4,958		4,172	930	2,324		2	2	2	576		
		1.Vunamami	4,004	2,384	Butuwini HC2	2,325	499	1,215	27.04.23	1	1	1	188	RENB,FM	Road
		2. Vunamami 2		2,575	Butuwini HC2	1,847	431	1,109	25.04.23	1	1	1	388	RENB,FM	Road
	3.BITAREBARABE		1,724	2,030		1,592	296	821		1	1	1	0		
		1.Bitarebarabe	1,724	2,030	Butuwini HC2	1,592	296	821	25.04.23	1	1	1	0	RENB,FM	Road
	4.VUNABALBAL		1,300	973		1,054	250	490		1	1	1	229		
		1.Vunabalbal	1,300	973	Butuwini HC2	1,054	250	490	26.04.23	1	1	1	229	RENB,FM	Road
	5.GUNANBA		1,797	2,557		3,404	680	1,775		2	2	2	224		
		1.Gunanba	1,797	2,557	Butuwini HC2	1,874	377	996	24.04.23	1	1	1	217	RENB,FM	Road
		2.Giregire		NEW	Butuwini HC2	1,530	303	779	24.04.23	1	1	1	7	RENB,FM	Road
	6.TINGANAVUDU		1,214	1,024		941	176	469		1	1	1	7		
		1.Tinganavudu	1,214	1,024	Butuwini HC2	941	176	469	24.04.23	1	1	1	7	RENB,FM	Road
	7.MALAKUNA No 4		1,903	2,093		1,600	336	791		1	1	1	0		
		1.Malakuna No. 4	1,903	2,093	Butuwini HC2	1,600	336	791	24.04.23	1	1	1	0	RENB,FM	Road
	8.ULAGUNAN		1,750	1,684		1,257	227	620		1	1	1	0		
		1.Ulagunan	1,750	1,684	Butuwini HC2	1,257	227	620	26.04.23	1	1	1	0	RENB,FM	Road
	9.LIVUAN		954	1,175		982	200	526		2	1	1	106		
		1.Livuan	954	1,106	/unapope HC	982	200	526	27.03.23	1	1	1	106	RENB	Road
		New Radas		70	/unapope HC2					1					Included Under Livuan
	10.RAMALE		881	966		1,089	200	533		1	1	1	31		
		1.Ramale	881	966	/unapope HC	1,089	200	533	27.03.23	1	1	1	31	RENB	Road
	11.BITAGALIP		881	728		807	150	432		1	1	1	80		
		Bitagalip	881	728	/unapope HC	807	150	432	27.03.23	1	1	1	80	RENB	Road
	12.KABAKAKAUL		783	800		800	139	422		1	1	1	16		
		Kabakaul	783	800	/unapope HC	800	139	422	25.03.23	1	1	1	16	RENB	Road
	13.TAKUBAR		1,540	3,069		2,805	625	1,478		5	5	5	135		
		1.Takubar	459	1,985	/unapope HC	1,775	398	917	30.03.23	1	1	1	46	RENB	Road
		2.Kabaleo	330	266	/unapope HC	368	80	198	02.04.23	1	1	1	35	RENB	Road
		3.Vunabosco	111	113	/unapope HC	129	38	81	02.04.23	1	1	1	38	RENB	Road
		4.Takubar Pltn	269	316	/unapope HC	226	50	116	02.04.23	1	1	1	7	RENB	Road
		5.Kabaleo T/College	371	389	/unapope HC	307	59	166	30.03.23	1	1	1	9	RENB	Road
	14.PALNAKAUR		932	1,049		1,049	182	522		1	1	1	48		
		Palnakaur	932	1,049	/unapope HC	1,049	182	522	01.04.23	1	1	1	48	RENB	Road
	15.ULAULATAVA		1,555	1,639		1,567	303	793		1	1	1	0		
		1.Ulaulatava	1,555	1,639	Butuwini HC2	1,567	303	793	24.04.23	1	1	1	0	RENB,FM	Road
	16.VUNAPOPE		320	0											
		1.Vunapope Cath Miss.	58	0	/unapope HC2										Comes under ward 20
		2.Rapopo Pltn	262	0	/unapope HC2										Comes under ward 20
	17.NGUNGUNA		1,258	1,010		873	173	445		1	1	1	0		

LLG	WARD	Village/ Census Unit	Estimated 2022 Population from 2000 Census	2022 Estimated from 2019 Data	Health Centre	Population Surveyed	House Holds Surveyed	Nets Issued	Date Of Distribution	Villages	Digicel	Bmobile	Houses With Radios	Radio Networks	Comments
		5.Bailu Pltn	124	275	/unapope HC	366	48	184	29.03.23	1	1	1	10	RENB	Road
		6.Lakunda Pltn	228	217	/unapope HC	172	31	94	29.03.23	1	1	1	6	RENB	Road
		7.Wongawonga 1 & 2	259	316	/unapope HC	390	66	205	29.03.23	1	1	1	0	RENB	Road
		8.Wondaroo	91	98	/unapope HC	105	25	82	29.03.23	1	1	1	7	RENB	Road
		20.KOKOPO TOWN	8,245	10,866		10,103	1,880	5,404		11	11	11	553		
		1.Kokopo	541	1,258	Butuwin HC2	355	83	289	26.04.23	1	1	1	0	RENB,FM	Road
		2.Kokopo	750	0	/unapope HC2										Evicted
		3.Kokopo	930	771	Butuwin HC2	534	81	302	26.04.23	1	1	1	0	RENB,FM	Road
		4.Kokopo	441	0	Butuwin HC2										Evicted
		5.Kenakat Pltn.	949	2,959	Butuwin HC2	2,219	344	1,182	26.04.23	1	1	1	290	RENB,FM	Road
		6.Vunapope Cath. Mission	1,957	415	/unapope HC	316	49	149	26.03.23	1	1	1	0	RENB	Road
		7.Vunapope Mission Works Area	1,083	406	/unapope HC	737	105	372	26.03.23	1	1	1	39	RENB	Road
		8.Vunapope	71	742	/unapope HC	488	86	272	26.03.23	1	1	1	38	RENB	Road
		9.Butuwin Health Centre	218	553	Butuwin HC2	1,294	250	653	25.04.23	1	1	1	0	RENB,FM	Road
		10.Takubar Estate	273	0	Vunapope HC										Non Existant
		11.Chanel College/Matanatava	146	677	/unapope HC	282	62	155	25.03.23	1	1	1	23	RENB	Road
		12.Takubar Industrial Area	519	680	/unapope HC	1,613	377	872	30.03.23	1	1	1	6	RENB	Road
		13.Raniolo Pltn.	366	2,000	/unapope HC	1,830	381	937	28.03.23	1	1	1	117	RENB	Road
		14.Banana Camp		404	Vunapope HC										Non Existant
		15.Sea View		0	/unapope HC	435	62	221	25.03.23	1	1	1	40	RENB	Road
		RALUANA RURAL	24,315	20,697		15,984	3,399	8,421		17	17	17	1,228	17	
		1.RABURUA	1,389	1,319		2,516	523	1,325		2	2	2	144		
		1.Raburua	1,389	1,319	Butuwin HC	1,120	255	593	27.03.23	1	1	1	111	NBC & FM	Road
		2. Karavia No1		NEW	Butuwin HC	1,396	268	732	26.03.23	1	1	1	33	NBC & FM	Formerly at Gazelle
		2.BITATITA	439	293		284	50	148		1	1	1	30		
		1.Bitatia	439	293	Butuwin HC	284	50	148	26.03.23	1	1	1	30	NBC & FM	road
		3.NGUALIAN	909	1,027		926	173	428		1	1	1	80		
		1.Nguvalian	909	1,027	Butuwin HC	926	173	428	30.03.23	1	1	1	80	NBC & FM	Road
		4.RALUANA	1,662	1,223		1,112	206	596		1	1	1	31		
		1.Raluana	1,662	1,223	Butuwin HC	1,112	206	596	29.03.23	1	1	1	31	NBC & FM	Road
		5.BAROVON	883	704		659	135	352		1	1	1	32		
		1.Barovon	883	704	Butuwin HC	659	135	352	29.03.23	1	1	1	32	NBC & FM	Road
		6.IALAKUA	770	502		427	106	234		1	1	1	45		
		1.Jalakua	770	502	Butuwin HC	427	106	234	29.03.23	1	1	1	45	NBC & FM	Road
		7.VUNATAGIA	938	743		588	146	320		1	1	1	145		
		1.Vunatagia	938	743	Butuwin HC	588	146	320	27.03.23	1	1	1	145	NBC & FM	Road
		8.RANGUNA	1,153	1,112		912	159	471		1	1	1	69		
		1.Ranguna	1,153	1,112	Butuwin HC	912	159	471	30.03.23	1	1	1	69	NBC & FM	Road
		9.BITABAUR	1,184	922		962	196	505		1	1	1	22		
		1.Bitabaur	1,184	922	Butuwin HC	962	196	505	27.03.23	1	1	1	22	NBC & FM	Road
		10.VUNAMURMUR	3,556	2,982		1,573	383	843		1	1	1	0		
		1.Vunamurmur	2,078	2,117	Butuwin HC	1,573	383	843	27.03.23	1	1	1	0	NBC & FM	Road
		2.Livuan	1,479	865	Butuwin HC										Abandoned- Tribal Fights
		11.VUNAULUL	1,309	1,120											Abandoned- Tribal Fights
		1.Vunaulul	1,309	1,120	Butuwin HC										Abandoned- Tribal Fights
		12.RALALAR	1,063	1,373		1,325	300	687		1	1	1	208		
		1.Ralalar	1,063	1,373	Butuwin HC	1,325	300	687	20.03.23	1	1	1	208	IBC, PNGFI	Road
		13.TURAGUNAN	683	533		514	114	269		1	1	1	109		
		1.Turagunan	683	533	Butuwin HC	514	114	269	30.03.23	1	1	1	109	NBC & FM	Road
		14.KUNAKUNAI	1,065	533											
		1.Kunakunai	1,065	533	Butuwin HC										Abandoned- Tribal Fights
		15.NGATUR	965	769											
		1.Ngatur	965	769	Butuwin HC										Abandoned- Tribal Fights
		16.TINGANALOM	1,914	1,722		1,621	347	871		1	1	1	138		
		1.Tinganalom	1,914	1,722	Butuwin HC	1,621	347	871	28.03.23	1	1	1	138	NBC & FM	Road
		17.NANUK	1,218	944		854	173	451		1	1	1	57		
		1.Nanuk	1,218	944	Butuwin HC	854	173	451	28.03.23	1	1	1	57	NBC & FM	Road
		18.BALANATAMAN	1,143	907		977	227	530		1	1	1	46		
		1.Balanataman	1,143	907	Butuwin HC	977	227	530	28.03.23	1	1	1	46	NBC & FM	Road
		19.RAVAT	1,553	1,246											
		1.Ravat	1,553	1,246	Butuwin HC										Abandoned- Tribal Fights
		20.TALAKUA	519	720		734	161	391		1	1	1	72		
		1.Talakua	519	720	Butuwin HC	734	161	391	20.03.23	1	1	1	72	IBC, PNGFI	Road

ANNEX THREE

**EAST NEW BRITAIN PROVINCE
POMIO POPULATION 2022
LLIN DISTRIBUTION SUMMARY SHEET**

Note - For Muella HC - Access through Ulamona in WNB and road to Bago plus four hour walk

LLG	WARD	Village/ Census Unit	Estimated 2022 Population from 2000 Census	2022 Estimated from 2016 Data	Health Centre	Population Surveyed	House Holds Surveyed	Nets Issued	Date Of Distribution	Villages	Digicel	Bmoble	Houses With Radios	Radio Networks	Comments
	Pomio		87,636	87,636		86,603	16,663	43,269		376	232	35	2,697	60	
	Central/Inland Pomio		26,382	20,874		21,732	3,763	10,422		95	66	0	306	19	
	1.PAROLE		1,343	1,095	20874	1,091	177	551		4	4	0	0		
		Pigapuna	162	380	Pomio HC	169	23	82	14.02.23	1	1	0	0		Boat
		Ngavale	637	473	Pomio HC	552	93	280	14.02.23	1	1	0	0		Boat
		Parole	544	242	Pomio HC	176	28	87	14.02.23	1	1	0	0		Boat
		Malope		NEW	Pomio HC	194	33	102	14.02.23	1	1	0	0		Boat
	2.MALAKUR		419	274		258	50	139		1	1	0	0		
		Malakur	419	274	Pomio HC	258	50	139	14.02.23	1	1	0	0		Boat
	3.KERKERNENA		690	539		581	107	290		3	3	0	0		
		1.Rurai	345	124	Pomio HC	234	43	117	14.02.23	1	1	0	0		Boat
		2.Kerkernena	218	92	Pomio HC	204	41	103	14.02.23	1	1	0	0		Boat
		3.Begapuna	127	323	Pomio HC	143	23	70	14.02.23	1	1	0	0		Boat
	4.BAIEN (WEST)		320	261		277	40	139		1	1	0	0		
		Baien (West)	320	261	Pomio HC	277	40	139	14.02.23	1	1	0	0		Boat
	5.GALEWA		1,169	639		667	112	331		2	2	0	0		
		1.Galewa	1,074	437	Pomio HC	544	92	272	14.02.23	1	1	0	0		Boat
		2.Pagepuna	96	202	Pomio HC	123	20	59	14.02.23	1	1	0	0		Boat
	6.MARMAR		856	586		530	90	272		2	2	0	0		
		Marmar	635	304	Pomio HC	314	50	157	17.02.23	1	1	0	0		Road
		Bilatena	220	281	Pomio HC	216	40	115	17.02.23	1	1	0	0		Road
	7.POMIO		910	543		651	110	339		3	3	0	12		
		1.Pomio	694	394	Pomio HC	455	76	231	17.02.23	1	1	0	12		Road
		2.Pomio Health Center	103	51	Pomio HC	80	12	47	17.02.23	1	1	0	0		Road
		3.Pomio Comm. School	113	98	Pomio HC	116	22	61	17.02.23	1	1	0	0		Road
	8.OLAIPUN		1,023	1,006		840	153	402		7	4	0	0		
		Olaipun	536	424	Pomio HC	370	61	174	17.02.23	1	0	0	0		Trek
		Rolangi	80	54	Pomio HC	43	7	21	17.02.23	1	1	0	0		Trek
		Manu	107	75	Pomio HC	71	14	35	16.02.23	1	1	0	0		Trek
		Purpur	64	85	Pomio HC	151	29	72	16.02.23	1	0	0	0		Trek
		Gavogopuna	53	49	Pomio HC	43	9	18	17.02.23	1	1	0	0		Trek
		Pagou	88	60	Pomio HC	19	4	10	17.02.23	1					Trek
		Pasisilona	96	85	Pomio HC										Non Existant
		Olove		175	Pomio HC	143	29	72	16.02.23	1	1	0	0		Trek
	9.SALI		581	494		451	88	232		1	1	0	0		
		Sali	581	494	Pomio HC	451	88	232	16.02.23	1	1	0	0		Road
	10.BOVALPUN		283	345		424	86	208		2	2	0	0		
		Bovalpun	142	209	Pomio HC	215	40	105	16.02.23	1	1	0	0		Road
		Masi	140	137	Pomio HC	209	46	103	16.02.23	1	1	0	0		Road
	11.KALAKURU		308	355		386	67	192		2	2	0	2		
		Ragelo	308	355	Pomio HC	143	26	73	16.02.23	1	1	0	0		Boat
		Katap		NEW	Pomio HC	243	41	119	16.02.23	1	1	0	2		Road
	12.KAWA		809	911		893	157	414		4	4	0	4		Coast
		Baro	343	350	Matong HC	250	45	112	19.02.23	1	1	0	0		Boat
		Rainut	345	353	Matong HC	301	48	142	19.02.23	1	1	0	0		Boat
		Pora	121	53	Matong HC	201	36	94	19.02.23	1	1	0	4		Boat
		Borai		155	Matong HC	141	28	66	19.02.23	1	1	0	0		Boat
	13.TOKAI		926	609		764	128	353		5	5	0	0		
		Penoi	179	45	Matong HC										Non Existant
		Tokai	96	68	Matong HC	100	20	49	19.02.23	1	1	0	0		Boat
		Likon	288	217	Matong HC	336	50	147	19.02.23	1	1	0	0		Boat
		Kerengme	172	198	Matong HC	201	36	97	19.02.23	1	1	0	0		Boat
		Rolpum	113	34	Matong HC	35	6	20	19.02.23	1	1	0	0		Boat
		Mambupun	78	48	Matong HC	92	16	40	19.02.23	1	1	0	0		Boat
	14.MATONG		1,066	627		867	156	423		4	4	0	0		
		1.Matong	665	277	Matong HC	435	80	209	19.02.23	1	1	0	0		Boat
		2.Kolai	170	65	Matong HC	166	33	83	19.02.23	1	1	0	0		Boat
		3.Pue/Malwei	154	108	Matong HC	143	21	70	19.02.23	1	1	0	0		Boat
		4.Turevut Pakia/Saelpun	78	177	Matong HC	123	22	61	19.02.23	1	1	0	0		Boat
	15.BUKA		419	298		321	77	159		3	1	0	0		
		1.Buka	265	204	Matong HC	195	50	101	18.02.23	1	1	0	0		Boat
		2.Gelokpun	88	29	Matong HC										Non Existant
		3.Maluan	66	64	Matong HC	101	23	46	18.02.23	1	0	0	0		Boat
		4. Guomko		NEW	Matong HC	25	4	12	18.02.23	1	0	0	0		Boat
	16.PULPUL		1,259	981		891	96	420		3	0	0	0		
		1.Pulpul	937	615	Matong HC	529	35	247	18.02.23	1	0	0	0		Boat
		2.Bogontatar	195	47	Matong HC	262	47	128	18.02.23	1	0	0	0		Boat
		3.Selepleppun	127	319	Matong HC	100	14	45	18.02.23	1	0	0	0		Boat
	17.PAKIA		1,201	1,353		1,116	199	539		6	0	0	11		
		1.Pakia	345	165	Pomio HC	274	50	129	15.02.23	1	0	0	0		Road
		2.Maolengpuna	125	106	Pomio HC	130	24	63	15.02.23	1	0	0	0		Road/Trek
		3.Manakeng	131	155	Pomio HC	146	32	74	15.02.23	1	0	0	3		Road
		4.Kaungarole	177	310	Pomio HC	190	30	92	15.02.23	1	0	0	8		Road
		5.Keluga	423	305	Pomio HC	190	31	95	15.02.23	1	0	0	0		Road
		6.Muro		311	Pomio HC										Same as Mukulu Ward 19
		7. Bua/Lomo		NEW	Pomio HC	186	32	86	15.02.23	1	0	0	0		Road
	18.MILE		1,107	555		914	130	435		1	0	0	27		
		1.Mile	1,107	555	Pomio HC	914	130	435	15.02.23	1	0	0	27		Road/Trek
	19.MUKULU		571	353		349	51	174		2	0	0	3		
		1.Mukulu	287	196	Pomio HC	159	25	79	15.02.23	1	0	0	0		Road/Trek
		2.Sangomale	285	158	Pomio HC	190	26	95	15.02.23	1	0	0	3		Road/Trek
	20.MALBONI		573	528		523	108	221		1	1	0	4		
		Malboni	573	528	Muela HC	523	108	221	15.04.23	1	1	0	4	FM/NBC	Trek
	21.MUELA		900	890		870	160	370		5	5	0	66		
		1.Muela	197	273	Muela HC	171	31	77	15.04.23	1	1	0	17	FM/NBC	Trek
		2.Talive	94	55	Muela HC	95	18	45	17.04.23	1	1	0	10	FM/NBC	Trek

LL G	WARD	Village/ Census Unit	Estimated 2022 Population from 2000 Census	2022 Estimated from 2016 Data	Health Centre	Population Surveyed	House Holds Surveyed	Nets Issued	Date Of Distribution	Villages	Digicel	Bmobie	Houses With Radios	Radio Networks	Comments
		3.Lele	281	287	Muela HC	339	61	138	15.04.23	1	1	0	28	FM/NBC	Trek
		4.Mansipana	109	80	Muela HC	60	10	26	17.04.23	1	1	0	0	FM/NBC	Trek
		5.Borengpuna	220	194	Muela HC	205	40	84	17.04.23	1	1	0	11	FM/NBC	Trek
	22.BAGO		1,507	842		1,241	197	579		3	3	0	129		
		1.Kamatanme	302	307	Muela HC	285	63	128	17.04.23	1	1	0	21	FM/NBC	Road
		2.Bago	347	534	Muela HC	629	93	279	17.04.23	1	1	0	71	FM/NBC	Road
		3.Muga Logging Camp		NEW	Muela HC	327	41	172	28.04.23	1	1	0	37	FM/NBC	New Village/ Road acces
		4.Manu	173	0	Muela HC										Covered In WNBPN Navo
		5.Painawe	283	0	Muela HC										Covered In WNBPN Gilo
		6.Pata	283	0	Muela HC										Covered In WNBPN Navo
		7.Bageta	119	0	Muela HC										Covered In WNBPN Navo
	23.PARAKAMAN		1,027	945		976	145	495		3	0	0	0		
		1.Paturu	298	342	Nutuve HC	344	50	174	02.03.23	1	0	0	0		Trek
		2.Tetal	255	280	Nutuve HC	313	48	154	28.02.23	1	0	0	0		Trek
		3.Parakaman	474	323	Nutuve HC	319	47	167	02.03.23	1	0	0	0		Trek
	24.BIRIGI		867	813		727	136	355		2	2	0	0		
		Piavu	374	362	Nutuve HC	284	65	131	01.03.23	1	1	0	0		Trek
		Birigi	493	451	Nutuve HC	443	71	224	02.03.23	1	1	0	0		Trek
	25.BAGITAVE		292	297		314	61	160		1	1	0	0		
		Bagitave	292	297	Nutuve HC	314	61	160	02.03.23	1	1	0	0		Trek
	26.KAPKENA		713	885		764	135	367		1	1	0	0		
		Kapkena	713	885	Nutuve HC	764	135	367	01.03.23	1	1	0	0		Trek
	27.TUKE		478	429		434	78	180		2	2	0	16		
		Tuke No. 1	308	163	Muela HC	197	34	79	16.03.23	1	1	0	6	FM/NBC	Trek
		Tuke No. 2	170	266	Muela HC	237	44	101	16.03.23	1	1	0	10	FM/NBC	Trek
	28.LAKIRI		988	531		662	140	334		3	0	0	0		
		1.Lakiri	550	216	Nutuve HC	421	100	203	01.03.23	1	0	0	0		Trek
		2.Penoi	179	89	Nutuve HC	78	13	41	02.03.23	1	0	0	0		Trek
		3.Gulgul	259	226	Nutuve HC										Abandoned
		4. Berali		NEW	Nutuve HC	163	27	90	02.03.23	1	0	0	0		Trek
	29.MAREVU		557	330		389	68	166		4	4	0	4		
		1.Marevu	205	109	Muela HC	113	19	50	16.04.23	1	1	0	2	FM/NBC	Trek
		2.Daga	58	0	Muela HC										Non Existant
		3.Pauove/Sito	92	0	Muela HC	52	10	23	16.04.23	1	1	0	0	FM/NBC	Trek
		4.Pelly	154	106	Muela HC	181	33	75	16.04.23	1	1	0	2	FM/NBC	Trek
		5.Kanamawe	49	115	Muela HC	43	6	18	16.04.23	1	1	0	0	FM/NBC	Trek
	30.MASUARI		908	602		548	97	199		1	2	0	0		
		1.Pauove	162	97	Muela HC										Non Existant
		2.Masuari	366	197	Muela HC	273	50	100	17.04.23	1	1	0	0	FM/NBC	Trek
		3.Puma	164	252	Muela HC	275	47	99	17.04.23		1	0	0	FM/NBC	Trek
		4.Pongareve	216	56	Muela HC										Abandoned
	31.MANIGUGULI		150	0		257	48	135		2	2	0	28		
		1.Koilau	105	0	Muela HC	104	18	55	26.04.23	1	1	0	0	FM/NBC	Road/Trek
		2.Mokemoke	45	0	Muela HC	153	30	80	26.04.23	1	1	0	28	FM/NBC	Road/Trek
		Maniguguli		0	Muela HC										Non Existant
	32.KAVALE		1,333	1,256		1,003	170	488		6	3	0	0		
		1.Bakuria No. 1	327	298	Nutuve HC	296	47	140	28.02.23	1	0	0	0		Trek
		2.Bakuria No. 2	148	99	Nutuve HC	46	6	24	02.03.23	1	1	0	0		Trek
		3.Kula	341	179	Nutuve HC	232	42	117	02.03.23	1	0	0	0		Trek
		4.Kavale	304	341	Nutuve HC	134	27	66	02.03.23	1	0	0	0		Trek
		5.Ire	212	205	Nutuve HC	158	26	74	28.02.23	1	1	0	0		Trek
		6.Nutuve Station		134	Nutuve HC	137	22	67	02.03.23	1	1	0	0		Trek
	33.GELIOI		828	702		753	146	361		5	1	0	0		
		1.Lalika	138	109	Nutuve HC	107	19	49	28.02.23	1	0	0	0		Trek
		2.Gelioi	127	62	Nutuve HC	95	18	45	28.02.23	1	0	0	0		Trek
		3.Mongo	150	130	Nutuve HC	138	27	65	28.02.23	1	0	0	0		Trek
		4.Ora	199	231	Nutuve HC	226	45	112	01.03.23	1	0	0	0		Trek
		5.Lampuru	214	169	Nutuve HC	187	37	90	28.02.23	1	1	0	0		Trek
				0											
	East Pomio Rural		9,622	8,013		7,903	1,331	3,802		29	20	7	0	0	
	1. LAMARAIN		897	941		925	162	446		7	7	7	0		
		1.Lamarain	136	97	Marunga HC	178	27	85	10.02.23	1	1	1	0		Road
		2.Plongel	101	163	Marunga HC	92	19	44	10.02.23	1	1	1	0		Road
		3.Mensual	209	265	Marunga HC	268	46	129	10.02.23	1	1	1	0		Road
		4.Psingpun Elem.	103	103	Marunga HC	86	17	42	10.02.23	1	1	1	0		Road
		5.Sipalngan	80	71	Marunga HC	83	13	41	10.02.23	1	1	1	0		Road
		6.Luvai	172	242	Marunga HC	139	22	67	10.02.23	1	1	1	0		Road
		7.Wide Bay Logging	96	0	Marunga HC	79	18	38	10.02.23	1	1	1	0		Road
	2. LONG		575	331		506	67	243		2	2	0	0		
		1.Long Village	359	248	Hoiya HC	438	58	210	12.02.23	1	1	0	0		Road
		2.Karalai Pltn	216	84	Hoiya HC	68	9	33	12.02.23	1	1	0	0		Road
	3. HOIYA		791	961		930	168	447		2	2	0	0		
		1.Kalip Village	257	251	Hoiya HC	264	46	127	12.02.23	1	1	0	0		Road
		2.Hoiya Village	534	710	Hoiya HC	666	122	320	12.02.23	1	1	0	0		Road
	4. KAUKUM		756	701		703	92	338		1	1	0	0		
		1.Kaukum Village	756	701	Hoiya HC	703	92	338	12.02.23	1	1	0	0		Road
	5. MILIM		893	812		890	134	427		3	3	0	0		
		1.Village	320	0	Hoiya HC										Relocate to Milim
		2.Milim Village	481	336	Hoiya HC	236	35	113	12.02.23	1	1	0	0		Road
		3.Malpas	49	385	Hoiya HC	415	64	199	12.02.23	1	1	0	0		Road
		4.Milim Sub Dist. Office	43	91	Hoiya HC	239	35	115	12.02.23	1	1	0	0		Road
	6. GUMA		1,943	1,574		1,446	262	687		3	3	0	0		
		1.Iwai (Gum)	822	725	Guma HC	618	122	296	10.02.23	1	1	0	0		Boat
		2.Kilalum	579	519	Guma HC	478	66	216	10.02.23	1	1	0	0		Boat
		3.Guma Village	542	330	Guma HC	350	74	175	14.02.23	1	1	0	0		Boat
	7. KLAMPUN		1,185	933		996	149	469		2	2	0	0		
		1.Klampun Village	559	464	Guma HC	549	83	263	12.02.23	1	1	0	0		Boat
		2.Msetwei	626	469	Guma HC	447	66	206	12.02.23	1	1	0	0		Boat
	8. SAMPUN		563	430		373	71	187		2	0				

LL G	WARD	Village/ Census Unit	Estimated 2022 Population from 2000 Census	2022 Estimated from 2016 Data	Health Centre	Population Surveyed	House Holds Surveyed	Nets Issued	Date Of Distribution	Villages	Digicel	Bmobie	Houses With Radios	Radio Networks	Comments
		1.Teimtop	172	122	Guma HC	74	37	37	13.02.23	1	0	0	0		Boat
		2.Waswas	366	282	Guma HC	225	43	113	13.02.23	1	0	0	0		Boat
	10. BAIN		631	327		379	50	182		1	0	0	0		
		Bain Village	631	327	Guma HC	379	50	182	13.02.23	1	0	0	0		Boat
	11. RAOLMAN		850	599		456	96	226		4	0	0	0		
		1.Maskilkie	259	178	Guma HC	162	30	81	12.02.23	1	0	0	0		Boat
		2.Lop (Rolman)Village	287	191	Guma HC	186	50	93	12.02.23	1	0	0	0		Boat
		3.Korpun Village	187	149	Guma HC	108	16	52	11.02.23	1	0	0	0		Boat
		4.Lakaer	117	80	Guma HC					1					Included Under Korpun
				0											
	Melkoi Rural		13,263	14,172		12,927	2,407	6,894		54	40	0	0	0	13263
	1.MAKMAK		585	850	14172	898	178	462	0	6	5	0	0		
		1.Makmak	74	72	Uvol HC	173	31	88	22.02.23	1	1	0	0		Coast
		2.Burawei	113	240	Uvol HC	139	31	69	21.02.23	1	1	0	0		Inland
		3.Murlemi	242	269	Uvol HC	180	29	92	22.02.23	1	1	0	0		Coast
		4.Tevi	129	150	Uvol HC	113	28	60	20.02.23	1	1	0	0		Coast
		5.Tangolo Comm. School	27	118	Uvol HC	246	47	128	20.02.23	1	1	0	0		Inland
		6. Umsipel		NEW	Uvol HC	47	12	25	22.02.23	1	0	0	0		
	2.WAIPO		524	727		609	110	429		4	0	0	0		
		1.Waipu	133	110	Uvol HC	119	20	85	20.02.23	1	0	0	0		Do From Amio Road
		2.Lopun	226	275	Uvol HC	217	46	157	20.02.23	1	0	0	0		Do From Amio Road
		3.Ainbulu	134	240	Uvol HC	210	32	144	19.02.23	1	0	0	0		Do From Amio Road
		4.Wala	31	102	Uvol HC	63	12	43	19.02.23	1	0	0	0		Do From Amio Road
	3.SIMI		532	500		608	119	312		2	2	0	0		
		1.Simi	532	500	Uvol HC	496	99	255	20.02.23	1	1	0	0		Inland
		2.Kowalewole		NEW	Uvol HC	112	20	57	20.02.23	1	1	0	0		
	4.TAVOLO		189	248		271	50	141		1	1	0	0		Coast
		1.Tavolo	189	248	Uvol HC	271	50	141	23.02.23	1	1	0	0		Boat
	5.MELELONG		706	639		639	96	332		1	1	0	0		
		1.Metelong	706	639	Uvol HC	639	96	332	19.02.23	1	1	0	0		Boat
	6.UVOL		684	674		714	110	371		3	1	0	0		Coast
		1.Uvol	515	380	Uvol HC	440	74	231	19.02.23	1	1	0	0		Boat
		2.Hellina	70	140	Uvol HC	85	17	45	19.02.23	1	0	0	0		Boat
		3.Uvol Sub District Office	99	153	Uvol HC	189	19	95	19.02.23	1	0	0	0		Boat
	7.INAHELE		485	431		407	72	216		1	1	0	0		Coast
		1.Inahele	485	431	Uvol HC	407	72	216	19.02.23	1	1	0	0		Boat
	8.RUACHANA		828	858		828	155	443		4	4	0	0		Coast
		1.Ruachana	439	488	Uvol HC	388	59	207	18.02.23	1	1	0	0		Boat
		2.Polpolo	246	289	Uvol HC	342	72	173	19.02.23	1	1	0	0		Boat
		3.Uvol Voc. Centre	103	62	Uvol HC	27	7	20	20.02.23	1	1	0	0		Boat
		4.Uvol Cath. Mission	41	20	Uvol HC	71	17	43	20.02.23	1	1	0	0		Boat
	9.MININGA		971	971		853	138	458		2	2	0	0		Coast
		1.Mininga	645	603	Uvol HC	609	100	331	22.02.23	1	1	0	0		Boat
		2.Hepora	325	368	Uvol HC	244	38	127	22.02.23	1	1	0	0		Boat
	10.MASO		1,111	1,142		997	162	513		3	2	0	0		
		1.Maso	838	609	Uvol HC	851	139	440	18.02.23	1	1	0	0		Boat/Coast
		2.Marusona	158	351	Uvol HC	146	23	73	20.02.23	1	1	0	0		Inland
		3.Maso Comm. School	115	181	Uvol HC					1					Included Under Maso
	11.RAOLMAN		1,499	1,681		1,680	301	863		7	7	0	0		
		1.Mukus	210	186	Uvol HC	247	50	129	21.02.23	1	1	0	0		2 Hr Walk Inland
		2.Eunga	113	158	Uvol HC	201	38	108	23.02.23	1	1	0	0		2 Hr Walk Inland
		3.Sahallil	152	201	Uvol HC	222	39	113	18.02.23	1	1	0	0		Coast
		4.Uga	99	243	Uvol HC	273	50	137	24.02.23	1	1	0	0		2 Hr Walk Inland
		5.Sumhuna	337	282	Uvol HC	227	36	111	24.02.23	1	1	0	0		2 Hr Walk Inland
		6.Esletenae	300	341	Uvol HC	233	41	118	19.02.23	1	1	0	0		2 Hr Walk Inland
		8.Tangaun	287	269	Uvol HC	277	47	147	18.02.23	1	1	0	0		2 Hr Walk Inland
	12.MAINGE		567	1,677		1,079	221	582		5	5	0	0		Coast
		1.Maihuna	31	118	Uvol HC	96	21	52	19.02.23	1	1	0	0		Boat
		2.Mainge	409	328	Uvol HC	522	95	269	18.02.23	1	1	0	0		Boat
		3.Ppapun	105	113	Uvol HC	91	17	48	20.02.23	1	1	0	0		Boat
		4.Kaoro C/Sap	21	51	Uvol HC	24	6	15	20.02.23	1	1	0	0		Boat
		Rano Logging Camp		1,067	Uvol HC	346	82	198	19.02.23	1	1	0	0		Boat
	13.ATU		308	339		343	66	179		1	1	0	0		Coast
		1.Atu	308	339	Uvol HC	343	66	179	19.02.23	1	1	0	0		Boat
	14.HAUMAKIA		844	737		754	152	399		2	0	0	0		
		1.Haumakia	439	277	Uvol HC	305	71	168	22.02.23	1	0	0	0		2-3 Hrs Walk Inland
		2.Hulhul	405	460	Uvol HC	449	81	231	21.02.23	1	0	0	0		2-3 Hrs Walk Inland
	15.POIO		450	288		296	73	171		1	1	0	0		
		1.Poio	450	288	Uvol HC	296	73	171	21.02.23	1	1	0	0		1 Hr Walk Inland
	16.PILEMATANA		976	600		547	120	297		3	3	0	0		
		1.Pilematana	522	366	Uvol HC	295	58	157	21.02.23	1	1	0	0		Road or 3-4 Hr Walk
		2.Hanaoria	224	96	Uvol HC	149	34	83	21.02.23	1	1	0	0		Road or 3-4 Hr Walk
		3.Hoiokletena	230	138	Uvol HC	103	28	57	22.02.23	1	1	0	0		Road or 3-4 Hr Walk
	17.LAUSUS		532	451		422	82	220		1	1	0	0		
		1.Lausus	532	451	Uvol HC	422	82	220	17.02.23	1	1	0	0		Road
	18.KENMININGA		729	654		643	128	329		2	0	0	0		
		1.Kenmininga	655	397	Uvol HC	643	128	329	23.02.23	1					Road
		2.Hoslana	74	257	Uvol HC					1					Included Under Kenmininga
	19.WARALE		743	707		339	74	177		5	3	0	0		
		1.Warale	125	252	Uvol HC	155	22	68	20.02.23	1	1	0	0		Two Day Walk
		2.Pita	99	81	Uvol HC	62	15	36	21.02.23	1	1	0	0		Two Day Walk
		3.Welu	156	207	Uvol HC	44	11	24	21.02.23	1	1	0	0		Two Day Walk
		4.Murep	123	0	Uvol HC										Non Existant
		5.Hulpuna	117	77	Uvol HC	53	17	33	22.02.23	1	0	0	0		Two Day Walk
		6.Popolakai	123	89	Uvol HC	25	9	16	22.02.23	1	0	0	0		Two Day Walk
	SINIVIT RURAL		20,334	23,821		24,761	4,895								

LL G	WARD	Village/ Census Unit	Estimated 2022 Population from 2000 Census	2022 Estimated from 2016 Data	Health Centre	Population Surveyed	House Holds Surveyed	Nets Issued	Date Of Distribution	Villages	Digicel	Bmobile	Houses With Radios	Radio Networks	Comments
		5.Bubuana Pltn	257	254	Warangoi HC	163	29	85	13.02.23	1	1	0	21	Radio ENB	Road
		6.Rieit Blocks	727	391	Warangoi HC	707	99	358	13.02.23	1	1	0	87	Radio ENB	Road
		7.Ilugi Pltn	78	493	Warangoi HC	289	71	158	13.02.23	1	1	0	41	Radio ENB	Road
		8.Kambubu H/School	364	167	Warangoi HC	94	19	56	12.02.23	1	1	1	0	Radio ENB	Road
		9.Krekembak Pltn No. 1	195	174	Warangoi HC	158	39	79	14.02.23	1	1	0	15	Radio ENB	Road
		10.Krekembak Pltn No. 2	140	354	Warangoi HC	396	70	207	13.02.23	1	1	0	29	Radio ENB	Road
		11.United Building Com. Pltn	45	100	Warangoi HC	129	29	70	13.02.23	1	1	0	12	Radio ENB	Road
		12.Vitavun Pltn	21	72	Warangoi HC	155	32	85	15.02.23	1	1	0	28	Radio ENB	Road
		13.Delroy Pltn	185	345	Warangoi HC	352	91	167	15.02.23	1	1	0	60	Radio ENB	Road
		14.Putput Logging	1,249	717	Warangoi HC	753	155	391	12.02.23	1	0	1	60	Radio ENB	Road
		15. Big Masta		110	Warangoi HC					1					Included Under Putput
		15.Intake	53	102	Warangoi HC	126	30	72	15.02.23	1	1	0	20		Road
		16.Wild Dog	4	543	Warangoi HC										Non Existant
	2.ARABAM		969	855		751	148	351		1	1	0	52		
		1.Arabam	969	855	Warangoi HC	751	148	351	14.02.23	1	1	0	52	Radio ENB	Trekking in some hamlets
	3.MARANAGI		179	156		162	30	77		1	1	0	7		
		1.Maranagi	179	156	Warangoi HC	162	30	77	14.02.23	1	1	0	7	Radio ENB	Trekking to the nearby hamlets
	4.REIGAL		364	276		311	82	147		2	2	0	44		
		1.Reigal	218	165	Warangoi HC	174	47	82	14.02.23	1	1	0	21	Radio ENB	One Day Trek To Furthest Hamlet
		2.Killigia	146	111	Warangoi HC	137	35	65	14.02.23	1	1	0	23	Radio ENB	
	5.SANDAM		598	737		606	141	311		2	1	0	89		
		1.Sandam	598	496	Warangoi HC	339	86	171	15.02.23	1	0	0	42		Road
		2.Lamas		240	Warangoi HC	267	55	140	15.02.23	1	1	0	47	Radio ENB	Road
	6.MARABU		464	285		271	49	128		1	0	0	0		
		1.Marabu	464	285	Warangoi HC	271	49	128	21.02.23	1	0	0	0		Trek
	7.LAT		1,004	998		1,099	226	547		4	3	0	0		
		1.Lat	608	712	Mungou HC	821	168	407	05.02.23	1	1	0	0		Road
		2.Induna Pltn	142	206	Mungou HC	205	40	103	05.02.23	1	1	0	0		Road
		3.Matlar Pltn	166	80	Mungou HC	73	18	37	05.02.23	1	1	0	0		Road
		4.Tailis Pltn	88	0	Mungou HC					1	0	0	0		Included Under Induna
	8.GAR		667	713		687	148	342		3	0	0	0		
		1.Gar	495	543	Mungou HC	561	119	274	05.02.23	1	0	0	0		Road
		2.Sarangas Pltn	18	0	Mungou HC					1	0	0	0		Included Under Sunsum w/o
		3.Mungou 1 Base Camp	154	169	Mungou HC	126	29	68	05.02.23	1	0	0	0		Road
	9.MERAI		1,017	793		766	164	390		5	0	0	0		
		1.Merai	602	388	Mungou HC	330	72	168	05.02.23	1	0	0	0		Road
		2.Mark	86	0	Mungou HC					1	0	0	0		Included Under Urai
		3.Urai	158	202	Mungou HC	221	48	113	05.02.23	1	0	0	0		Road
		4.Nongia C/School	39	139	Mungou HC	145	28	74	05.02.23	1	0	0	0		Road/Boat
		5.Sumsum Pltn	133	64	Mungou HC	70	16	35	05.02.23	1	0	0	0		Road
	10.ILI		505	439		391	83	203		1	0	0	0		
		1.Ili	505	439	Mungou HC	391	83	203	04.02.23	1	0	0	0		Road/Boat
	11.KARONG		520	411											
		1.Karong	520	411	Marunga HC										Road
	12.SUNAM		8,114	8,616		9,791	1,837	4,884		22	22	10	1,256		
		1.Sunam	1,310	1,005	Warangoi HC	1,141	211	544	19.02.23	1	1	1	173	Radio ENB	Road
		2.Warangoi Stn	754	279	Warangoi HC	566	85	262	19.02.23	1	1	1	53	Radio ENB	Road
		3.Warangoi Sawmill	472	949	Warangoi HC	1,064	216	503	18.02.23	1	1	1	160	Radio ENB	Road
		4.Warangoi Sett (Car Centre)	101	410	Warangoi HC	350	82	165	18.02.23	1	1	0	78	Radio ENB	Road
		5.Rum Jungle Pltn	281	467	Warangoi HC	628	115	341	13.02.23	1	1	1	103	Radio ENB	Road
		6.Tuna Puna Pltn	212	253	Warangoi HC	306	64	159	13.02.23	1	1	0	27	Radio ENB	Road
		7.Warick Pltn	259	179	Warangoi HC	159	46	94	15.02.23	1	1	1	42	Radio ENB	Road
		8.Warangoi Settlement	1,128	355	Warangoi HC	321	79	152	18.02.23	1	1	0	54	Radio ENB	Road
		9.Deep Deen	99	135	Warangoi HC	160	32	87	14.02.23	1	1	1	24	Radio ENB	Road
		10.Nukumal Pltn	197	381	Warangoi HC	498	100	250	15.02.23	1	1	1	72	Radio ENB	Road
		11.Palakau Pltn	181	235	Warangoi HC	215	35	114	14.02.23	1	1	1	23	Radio ENB	Road
		12.Rung Creek	148	98	Warangoi HC	95	22	48	14.02.23	1	1	1	14	Radio ENB	Road
		13.Wing Mow Pltn	175	106	Warangoi HC	118	19	64	13.02.23	1	1	0	13	Radio ENB	Road
		14.Laup Pltn	133	1,082	Warangoi HC	950	188	488	14.02.23	1	1	0	166	Radio ENB	Road
		15.Warangoi Buffalo Stn	68	221	Warangoi HC	207	27	108	14.02.23	1	1	0	5	Radio ENB	Road
		16.Sikut Settlement	1,088	598	Warangoi HC	596	99	283	18.02.23	1	1	0	66	Radio ENB	Road
		17.Kabereka	388	327	Warangoi HC	447	94	229	15.02.23	1	1	0	76	Radio ENB	Road
		18.Ivon Settlement	456	257	Warangoi HC	261	35	142	21.02.23	1	1	0	0	Radio ENB	Road
		19.Warangoi H/School	214	325	Warangoi HC	444	72	210	18.02.23	1	1	1	0	Radio ENB	Road
		20.Gore Settlement	314	229	Warangoi HC	268	31	138	21.02.23	1	1	0	0	Radio ENB	Road
		21.Walirua	134	0											Non Existant
		22.Kulungure		310	Warangoi HC	506	100	265	14.02.23	1	1	0	84	Radio ENB	Road
		23.Butam		415	Warangoi HC	501	85	238	15.02.23	1	1	0	23	Radio ENB	Road
	13.MARUNGA		733	816		835	181	413		3	3	3	0		
		1.Marunga Village	661	646	Marunga HC2	672	147	334	12.02.23	1	1	1	0		Boat/Road
		2.Bulus	43	115	Marunga HC2	115	26	55	10.02.23	1	1	1	0		Boat
		3.Marunga Health Centre	29	54	Marunga HC2	48	8	24	12.02.23	1	1	1	0		Boat/Road
	14.KAVUDEMKI		298	393		379	66	182		1	1	1	0		
		1.Kavudemki Village	298	393	Marunga HC2	379	66	182	10.02.23	1	1	1	0		Road
	15.TOL		133	469		514	78	251		2	2	2	0		
		1.Masarau Village	133	305	Marunga HC2	316	44	152	10.02.23	1	1	1	0		Road/Wharf Here
		2.Wide Bay Logging		164	Marunga HC2	198	34	99	10.02.23	1	1	1	0		Road/Boat
	T-Zen Nuigini			1,834		2,481	510	1,200		9	9	9	0		
		1. Mamity compound		47	Marunga HC2	52	10	26	11.02.23	1	1	1	0		Road
		2. Simbali compound		493	Marunga HC2	801	122	385	11.02.23	1	1	1	0		Road
		3. Awatka, nursery compound		616	Marunga HC2	648	147	315	11.02.23	1	1	1	0		Road
		4. Block 7 compound		123	Marunga HC2	207	36	99	11.02.23	1	1	1	0		Road
		5. Block 6 compound		261	Marunga HC2	265	50	127	12.02.23	1	1	1	0		Road
		6. Block 5 compound		65	Marunga HC2	137	41	66	12.02.23	1	1	1	0		Road
		7. Field 3 compound		58	Marunga HC2	38	19	19	12.02.23	1	1	1	0		Road
		8. Field 6 compound		81	Marunga HC2	197	47	95	12.02.23	1	1	1	0		Road
		9. Block 10 compound		90	Marunga HC2	136	38	68	12.02.23	1	1	1	0		Road
	WEST POMIO \ MAMUSI RURAL		18,034	20,756		19,280	4,267	9,770		125	48	0	288	0	
	1.GUGULENA		216	191		192	36	100		3	2	0	0		
		1.Gugulena	148	191	Palmmal HC	147	28	77	17.02.23	1	1	0	0		Road

LL G	WARD	Village/ Census Unit	Estimated 2022 Population from 2000 Census	2022 Estimated from 2016 Data	Health Centre	Population Surveyed	House Holds Surveyed	Nets Issued	Date Of Distribution	Villages	Digicel	Bmobile	Houses With Radios	Radio Networks	Comments
		2.Gietuagana	47	0	Palma HC	45	8	23	17.02.23	1	1	0	0		Road
		3.Unung Pltn	21	0	Palma HC					1					Included Under Gietuagana
	2.MALMAL		542	480		412	88	217		3	2	0	0		
		1.Malmal	125	223	Palma HC	213	50	115	17.02.23	1	1	0	0		Road
		2.Talie	363	257	Palma HC	199	38	102	17.02.23	1	1	0	0		Road
		3.Malmal Cath. Mission	55	0	Palma HC					1					Included Under Salel
	3.MANGINUNA		577	529		530	92	254		4	2	0	0		
		1.Manginuna	259	529	Palma HC	333	53	160	17.02.23	1	1	0	0		Road
		2.Wanga	101	0	Palma HC					1					Included Under Manginuna
		3.Bananapuna	74	0	Palma HC					1					Included Under Manginuna
		4.Marana	142	0	Palma HC	197	39	94	17.02.23	1	1	0	0		Road
	4.TOTONGPAL		425	452		438	76	219		2	1	0	0		
		1.Totongpal	351	452	Palma HC	438	76	219	20.02.23	1	1	0	0		Road
		2.Piri/Simoga	74	0	Palma HC					1					Included Under Totongpal
	5.KAITON		655	845		537	100	277		3	0	0	0		
		1.Kaiton	555	439	Palma HC	537	100	277	20.02.23	1	0	0	0		Road
		2.Kulipuna	72	287	Palma HC					1					Included Under Kaiton
		3.Drina Pltn	27	120	Palma HC					1					Included Under Kaiton
	6.PUAPAL		503	487		567	135	280		4	2	0	6		
		1.Puapal	423	380	Palma HC	438	95	214	21.02.23	1	1	0	0		Road
		2.Gwepuna	80	0	Palma HC					1					Included Under Puapal
		3.Contract Camp 32		34	Palma HC	83	22	40	23.02.23	1	0	0	0		Road
		4. Contract Camp 37		73	Palma HC	46	18	26	23.02.23	1	1	0	6		Road
	7.ROWAN \ MALO		396	1,036		764	233	398		8	4	0	0		
		1.Rowan/Malo	228	129	Palma HC	136	30	67	21.02.23	1	1	0	0		Road
		2.Rowan	168	236	Palma HC	192	46	101	21.02.23	1	0	0	0		Road
		3. Contract camp 44		93	Palma HC	62	19	33	22.02.23	1	1	0	0		Road
		4. Contract Camp 49		73	Palma HC	66	20	32	22.02.23	1	1	0	0		Road
		5. Contract camp 53		126	Palma HC	94	33	49	22.02.23	1	1	0	0		Road
		6. Contract camp 56		152	Palma HC	84	35	44	22.02.23	1	0	0	0		Road
		7. Division 4A		74	Palma HC	130	50	72	22.02.23	1	0	0	0		Road
		8. Division 4B		153	Palma HC					1					Included Under Division 4A
	8.POMAI \ MU		513	1,703		1,690	441	872		10	2	0	0		
		1.Pomai/Mu	269	374	Palma HC	533	111	268	21.02.23	1	0	0	0		Road
		2.Mu	244	203	Palma HC					1					Included Under Pomai
		3. Mill Compound		149	Palma HC	170	49	86	23.02.23	1	0	0	0		Road
		4. Nursery B camp		124	Palma HC	40	11	20	22.02.23	1	0	0	0		Road
		5. Buruno camp		100	Palma HC	83	30	41	22.02.23	1	1	0	0		Road
		5. Drina camp		212	Palma HC	378	95	195	24.02.23	1	1	0	0		Road
		6. Gravel Pit Camp		172	Palma HC	123	47	71	22.02.23	1	0	0	0		Road
		7. Reli Base Camp		139	Palma HC	199	50	99	23.02.23	1	0	0	0		Road
		8. Reli camp expatriate		78	Palma HC	30	14	19	22.02.23	1	0	0	0		Road
		9. Reli camp local Quarters		153	Palma HC	134	34	73	23.02.23	1	0	0	0		Road
	9.PROR \ SALEL		460	435		345	78	182		3	3	0	0		
		1.Poro	212	236	Palma HC	133	33	72	17.02.23	1	1	0	0		Road
		2.Salel	199	136	Palma HC	157	31	79	17.02.23	1	1	0	0		Road
		3.Lata/Tonamusu	49	63	Palma HC	55	14	31	17.02.23	1	1	0	0		Road
	10.IRENA		571	508		466	100	240		2	1	0	1		
		1.Irena	542	508	Palma HC	466	100	240	17.02.23	1	1	0	1		Road
		2.Mara	29	0	Palma HC					1					Included Under Irena
	11.KANGELONA		294	1,676		1,555	403	783		6	5	0	0		
		1.Kangelona	294	529	Palma HC	289	61	145	17.02.23	1	1	0	0		Road
		2.Kangelona Compound		320	Palma HC	508	142	260	17.02.23	1	1	0	0		Road
		3.Kangelona Div 1 and 3		160	Palma HC	225	67	116	20.02.23	1	1	0	0		Road
		4.Kangelona Div 2A,2B,2C		191	Palma HC	356	91	175	17.02.23	1	1	0	0		Road
		5.Kangelona Div 1A,1B,1C		252	Palma HC	177	42	87	22.02.23	1	1	0	0		Road
		6.Kangelona Div 2D,3D,4D		224	Palma HC					1					Road
	12.MAUNA		386	901		977	209	494		4	3	0	58		
		1.Mauna	386	433	Palma HC	408	86	209	20.02.23	1	1	0	0		Road
		2. Movana		92	Palma HC	152	34	77	25.02.23	1	0	0	2		Road
		3. Misa/Tolo		255	Palma HC	184	39	92	25.02.23	1	1	0	20		Road
		5. Irena/Repo		120	Palma HC	233	50	116	26.02.23	1	1	0	36		Road
	13.LAU		298	893		835	215	440		8	0	0	0		
		1.Lau	185	180	Palma HC	239	49	124	20.02.23	1	0	0	0		Road
		2.Porlo	113	203	Palma HC	212	46	108	21.02.23	1	0	0	0		Road
		3.Isogepuna		58	Palma HC					1					Included Under Lau
		4. Lau 1 camp		95	Palma HC	59	23	35	23.02.23	1	0	0	0		Road
		5. Lau 2 camp		51	Palma HC					1					Included Under Lau
		6. Kingapuna camp		98	Palma HC	106	35	56	23.02.23	1	0	0	0		Road
		7. Melalona camp		141	Palma HC	112	34	61	23.02.23	1	0	0	0		Road
		8. Kangapuna camp		67	Palma HC	107	28	56	23.02.23	1	0	0	0		Road
	14.BAIRAMAN		314	1,333		1,235	377	648		11	5	0	1		
		1.Bairaman	228	212	Palma HC	218	50	110	22.02.23	1	1	0	0		Road
		2.Malai	86	133	Palma HC	135	33	68	24.02.23	1	1	0	0		Road
		3.Raun wara camp		143	Palma HC	114	39	62	23.02.23	1	1	0	0		Road
		4. Bere camp		106	Palma HC	104	44	58	22.02.23	1	0	0	0		Road
		5.Raramang camp		68	Palma HC	99	23	48	22.02.23	1	1	0	0		Road
		6. B-12A Camp		49	Palma HC	124	53	72	22.02.23	1	0	0	0		Road
		7. B-12B Camp		135	Palma HC					1					
		8. B-16A Camp		87	Palma HC	56	19	27	22.02.23	1	0	0	1		Road
		9. B-16B Camp		99	Palma HC	97	26	51	22.02.23	1	0	0	0		Road
		10. Wara Mama Camp		189	Palma HC	154	40	79	22.02.23	1	0	0	0		Road
		11. Nursery C Camp		112	Palma HC	134	50	73	22.02.23	1	1	0	0		Road
	15.TOLEL		1,388	845		813	173	419		3	3	0	0		
		1.Toel	210	163	Palma HC	131	37	69	15.02.23	1	1	0	0		Road/Trek
		2.Siukena	90	106	Palma HC	114	25	56	17.02.23	1	1	0	0		Road
		3.Palalma Stn	1,088	576	Palma HC	568	111	294	17.02.23	1	1	0	0		Road
	16.MAITO		639	729		578	103	281		3	0	0	1		
		1.Maito	639	543	Palma HC	458	73	219	26.02.23	1	0	0	0		Road
		Ragalona		80	Palma HC	84	20	44	22.02.23	1	0	0	0		Road
		Ragalona Camp		105	Palma HC	36	10	18	23.02.23	1	0	0	1		Road
	17.SERENGUNA		546												

LL G	WARD	Village/ Census Unit	Estimated 2022 Population from 2000 Census	2022 Estimated from 2016 Data	Health Centre	Population Surveyed	House Holds Surveyed	Nets Issued	Date Of Distribution	Villages	Digicel	Bmobile	Houses With Radios	Radio Networks	Comments
		1.Serenguna	201	227	Palmalmal HC	226	44	113	26.02.23	1	0	0	0		Road
		2.Kulonto	57	0	Palmalmal HC					1					Included Under Sereguna
		3.Ulo	109	142	Palmalmal HC	268	57	137	26.02.23	1	0	0	0		Road
		4.Manane Eno	142	0	Palmalmal HC					1					Included Under Sereguna
		5.Matavang	37	0	Palmalmal HC					1					Included Under Paliavulu
		6.Ulelena		142	Palmalmal HC					1					Included Under Ulo
	18.PALIAVULU		339	221		278	64	135		2	0	0	0		
		1.Paliavulu	236	122	Viosopuna HC	225	50	108	20.02.23	1	0	0	0		Trek
		2.Mumuloala	103	99	Viosopuna HC	53	14	27	20.02.23	1	0	0	0		Trek
	19.VIOSOPUNA		370	290		342	67	166		2	0	0	0		
		1.Sanipuna	238	181	Viosopuna HC	215	37	103	24.02.23	1	0	0	0		Road+I Day Trek
		2.Viosopuna	133	109	Viosopuna HC	127	30	63	24.02.23	1	0	0	0		Road+I Day Trek
	20.POKAPUNA		283	240		196	40	104		1	0	0	0		
		1.Pokapuna	283	240	Viosopuna HC	196	40	104	26.02.23	1	0	0	0		1 Day Trek
	21.BILI		489	359		399	69	196		3	0	0	0		
		1.Bili	415	188	Viosopuna HC	169	29	83	24.02.23	1	0	0	0		3hrs Trek
		2.Guama	74	106	Viosopuna HC	128	22	63	25.02.23	1	0	0	0		3hrs Trek
		3.Lasa		64	Viosopuna HC	102	18	50	25.02.23	1	0	0	0		3hrs Trek
	22.PAKA		152	134		109	20	53		1	0	0	0		
		1.Paka	152	134	Viosopuna HC	109	20	53	24.02.23	1	0	0	0		3hrs Trek
	23.OKEMPUNA		787	411		537	99	266		3	0	0	0		
		1.Morelona	236	0	Viosopuna HC	103	23	50	24.02.23	1	0	0	0		Trek
		2.Okempuna	92	210	Viosopuna HC	228	47	116	26.02.23	1	0	0	0		Trek
		3.Yalelona Lemena	144	201	Viosopuna HC	206	29	100	26.02.23	1	0	0	0		Trek
		4.Lasa	173	0	Viosopuna HC										Same in Ward 21
		5.Sanipuna	142	0	Viosopuna HC										Same in ward 19
	24.KAITOTO		437	287		300	57	151		1	1	0	13		
		1.Kaitoto	437	287	Aona HC	300	57	151	19.02.23	1	1	0	13	NBC	4hr trek
	25.MAPUNA		487	319		382	64	184		2	2	0	24		
		1.Mapuna	341	237	Aona HC	269	45	132	19.02.23	1	1	0	10	NBC	3hrs Trek
		2.Malopuna	146	83	Aona HC	113	19	52	19.02.23	1	1	0	14	NBC	3hrs Trek
	26.PELING		345	268		237	45	117		1	1	0	9		
		1.Peling	345	268	Aona HC	237	45	117	19.02.23	1	1	0	9	NBC	2hr trek
	27.AONA		826	583		500	90	252		4	2	0	60		
		1.Aona	456	261	Aona HC	290	50	145	18.02.23	1	0	0	36	NBC	Trek
		2.Wangpupuna	259	158	Aona HC	164	31	85	16.02.23	1	1	0	16	NBC	Trek
		3.Ponglona	45	32	Aona HC	20	3	11	16.02.23	1	1	0	2	NBC	Trek
		4.Aona Cath.Mission	66	134	Aona HC	26	6	11	18.02.23	1	0	0	6	NBC	Trek
	28.YAU YAU		528	753		467	73	223		3	0	0	22		
		1.Lavugi	150	221	Aona HC	74	12	37	17.02.23	1	0	0	6	NBC	1 Day Trek
		2.Ti	62	0	Aona HC										Non Existant
		3.Yauyau	316	159	Aona HC	185	37	92	18.02.23	1	0	0	16	NBC	1 Day Trek
		4. Babata/Kotou		374	Aona HC	208	24	94	18.02.23	1	0	0	0	NBC	1 Day Trek
	29.KAIKOU		591	194		185	34	90		2	0	0	11		
		1.Kaikou	158	121	Aona HC	132	23	62	18.02.23	1	0	0	7	NBC	2 Day Trek
		2.Yaka Tavusi	248	0	Aona HC										Non Existant
		3.Kukulu	185	74	Aona HC	53	11	28	18.02.23	1	0	0	4	NBC	2 Day Trek
	30.KINSENA		1,362	1,115		1,104	196	538		6	0	0	34		
		1.Pulipuna	216	139	Aona HC	199	35	98	17.02.23	1	0	0	0	NBC	2 Hr Trek
		2.Morelana	131	129	Aona HC	136	25	67	17.02.23	1	0	0	12	NBC	2 Hr Trek
		3.Kinsena	470	247	Aona HC	270	50	135	16.02.23	1	0	0	18	NBC	2 Hr Trek
		4.Lopuna	271	292	Aona HC	169	30	87	17.02.23	1	0	0	0	NBC	2 Hr Trek
		5.Matalapuna	107	140	Aona HC	159	28	71	17.02.23	1	0	0	2	NBC	2 Hr Trek
		6.Pora	168	167	Aona HC	171	28	80	18.02.23	1	0	0	2	NBC	2 Hr Trek
	31.ULUTU		967	814		788	182	426		6	3	0	24		
		1.Lekempuna	287	227	Sivaona HC	210	46	109	19.02.23	1	0	0	6	NBC	Trek
		Matawang	273	133	Sivaona HC	148	31	83	20.02.23	1	0	0	10	NBC	Trek
		Ulutu	177	92	Sivaona HC	90	27	49	20.02.23	1	1	0	2	NBC	Trek
		Relingpuna	154	201	Sivaona HC	145	39	81	20.02.23	1	1	0	6	NBC	Trek
		Mariengpuna	64	99	Sivaona HC	102	22	56	20.02.23	1	1	0	0	NBC	Trek
		Kivalona	12	62	Sivaona HC	93	17	48	17.02.23	1	0	0	0	NBC	Trek
	32.KRENGKORONA		495	542		489	99	251		3	3	0	24		
		1.Lila	172	165	Sivaona HC	156	42	84	17.02.23	1	1	0	5	NBC	Trek
		2.Krengkorona	164	190	Sivaona HC	153	26	79	18.02.23	1	1	0	6	NBC	Trek
		3.Kerewa	160	187	Sivaona HC	180	31	88	17.02.23	1	1	0	13	NBC	Trek
	33.SIVAONA		620	451		335	63	168		1	1	0	0		
		1.Sivaona	620	451	Sivaona HC	335	63	168	20.02.23	1	1	0		NBC	Road
	34.PEPENG		234	221		204	45	96		1	0	0	0		
		1.Pepeng	234	221	Sivaona HC	204	45	96	20.02.23	1	0	0	0	NBC	Road

ANNEX FOUR

**EAST NEW BRITAIN PROVINCE
RABAU POPULATION 2022
LLIN DISTRIBUTION SUMMARY SHEET**

LLG	WARD	Village/ Census Unit	Estimated 2022 Population from 2000 Census	2022 Estimated from 2016 Data	Health Centre	Population Surveyed	House Holds Surveyed	Nets Issued	Date Of Distribution	Village	Digicel	Bmobile	Houses With Radios	Radio Networks	Comments
RABAU			43,974	47,175		46,682	10,487	25,128		93	90	66	5,197	91	
BALANATAMAN RURAL			22,445	24,019		24,802	5,778	13,350		32	32	24	3,584	32	22445
	1.RATUNG		1,108	510		852	217	468		1	1	1	179		
		1.Ratung	1,108	510	NBH	852	217	468	20.04.23	1	1	1	179	R.E.N.B	Road
	2.PILAPILA		1,284	1,110		1,081	250	592		1	1	1	204	R.E.N.B	Road
		1.Pilapila	1,284	1,110	NBH	1,081	250	592	20.04.23	1	1	1	204	R.E.N.B	Road
	3.KARAVIA		853	806		767	172	408		1	1	1	129		
		1.Karavia	853	806	NBH	767	172	408	19.04.23	1	1	1	129	R.E.N.B	Road
	4.RATAVUL		1,378	1,363		1,205	282	655		1	1	1	224	R.E.N.B	Road
		1.Ratavul	1,378	1,363	NBH	1,205	282	655	19.04.23	1	1	1	224	R.E.N.B	Road
	5.VOLAVOLO		1,749	1,644		1,814	449	943		1	1	1	313	R.E.N.B	Road
		1.Volavolo	1,749	1,644	NBH	1,814	449	943	19.04.23	1	1	1	313	R.E.N.B	Road
	6.NONGA		1,687	1,915		1,674	419	931		1	1	1	377	R.E.N.B	Road
		1.Nonga	1,687	1,915	NBH	1,674	419	931	17.04.23	1	1	1	377	R.E.N.B	Road
	7.TAVUI No 1		2,375	2,463		2,485	637	1,324		1	1	1	519		
		1.Tavui No. 1	2,375	2,463	NBH	2,485	637	1,324	16.04.23	1	1	1	519	R.E.N.B	Road
	8.TAVUI No 2		998	730		952	214	498		1	1	1	155		
		1.Tavui No. 2	998	730	NBH	952	214	498	15.04.23	1	1	1	155	R.E.N.B	Road
	9.TAVUI No 3		637	681		733	250	413		1	1	1	0		
		1.Tavui No. 3	637	681	NBH	733	250	413	15.04.23	1	1	1	0	R.E.N.B	Road
	10.MALAGUNA No 1		1,704	2,164		2,151	399	1,177		1	1	1	248		
		1.Malaguna No. 1	1,704	2,164	RUC	2,151	399	1,177	06.04.23	1	1	1	248	98.0 FM	Road
	11.MALAGUNA No 2		1,240	1,058		1,036	248	586		1	1	1	173		
		1.Malaguna No. 2	1,240	1,058	RUC	1,036	248	586	06.04.23	1	1	1	173	98.0 FM	Road
	12.MALAGUNA No 3		1,423	781		1,626	338	867		1	1	1	238		
		1.Malaguna No. 3	1,423	781	RUC	1,626	338	867	06.04.23	1	1	1	238	98.0 FM	Road
	13.IAWAKAKA		949	1,203		1,285	296	696		2	2	2	258		
		1.Iawakaka	846	1,029	RUC	1,114	256	605	20.04.23	1	1	1	243	R.E.N.B	Road
		2.Iawakaka Gelagela Sett.	103	174	GHC	171	40	91	14.04.23	1	1	1	15	RENB	Road
	14.RAPOLO		1,041	906		1,015	200	515		1	1	1	103		
		1.Rapolo	1,041	906	RUC	1,015	200	515	05.04.23	1	1	1	103	98.0 FM	Road
	15.RALUAN No 1		663	704		636	146	355		1	1	1	42		
		1.Raluan No. 1	663	704	RUC	636	146	355	05.04.23	1	1	1	42	98.0 FM	Road
	16.RALUAN No 2		1,013	1,004		945	229	524		1	1	1	31		
		1.Raluan No. 2	1,013	1,004	RUC	945	229	524	05.04.23	1	1	1	31	98.0 FM	Road
	17.TAVANA		279	275		375	66	191		1	1	1	10		
		1.Tavana	279	275	RUC	375	66	191	05.04.23	1	1	1	10	98.0 FM	Road
	18.VALAUR		469	429		321	91	180		1	1	1	46		
		1.Valaur	469	429	RUC	321	91	180	05.04.23	1	1	1	46	98.0 FM	Road
	19.NONGA BASE		1,596	4,273		3,849	875	2,027		13	13	5	335		
		1.Nonga Base Hospital	504	319	NBH	264	50	137	18.04.23	1	1	1	44	RENB	Road
		2.Nonga Staff Resi.	307	0	NBH	90	20	49	18.04.23	1	1	1	20	RENB	Road
		3.Nonga Resi. Area	785	319	NBH	189	35	98	18.04.23	1	1	1	33	RENB	Road
		New Villages (Resettlements)		0											
		Volavolo		191	GHC	189	42	98	13.04.23	1	1	0	3	RENB	Road
		Tavui No.3		202	GHC	169	43	88	13.04.23	1	1	0	9	RENB	Road
		Rapolo		524	GHC	426	100	232	12.04.23	1	1	1	2	RENB	Road
		Malaguna No.1		445	GHC	293	79	163	12.04.23	1	1	0	43	RENB	Road
		Malaguna No.2		424	GHC	423	74	213	11.04.23	1	1	1	52	RENB	Road
		Malaguna No.3		895	GHC	815	200	415	12.04.23	1	1	0	57	RENB	Road
		Tavana		285	GHC	322	78	167	11.04.23	1	1	0	43	RENB	Road
		Valaur		92	GHC	101	29	54	11.04.23	1	1	0	15	RENB	Road
		Asing - Raluan 1/2, Ratung, Ratavul		382	GHC	393	88	215	10.04.23	1	1	0	0	RENB	Road
		Mix race		193	GHC	175	37	98	13.04.23	1	1	0	14	RENB	Road
KOMBIU RURAL			14,030	14,207		13,456	2,977	7,403		22	21	8	796	22	
	1.BAAI		1,033	1,099		1,005	221	575		2	2	1	64		
		1.Baai	145	62	RUC2	90	25	54	08.04.23	1	1	0	6	98.0 FM	Road
		2.Baai Gelagela Sett.	888	1,037	GHC2	915	196	521	13.04.23	1	1	1	58	RENB	Road
	2.NODUP		1,474	1,470		1,349	293	733		2	2	1	75		
		1.Nodup	314	318	RUC2	336	62	180	08.04.23	1	1	0	4	98.0 FM	Road
		2.Nodup Gelagela Sett.	1,160	1,152	GHC2	1,013	231	553	13.04.23	1	1	1	71	RENB	Road
	3.MATALAU		1,430	1,913		1,602	411	897		2	2	1	101		
		1.Matalau	115	264	RUC2	176	53	103	08.04.23	1	1	0	11	98.0 FM	Road
		2.Matalau Gelagela Sett.	1,315	1,649	GHC2	1,426	358	794	14.04.23	1	1	1	90	RENB	Road
	4.RAKUNAT		968	1,013		754	157	405		2	2	1	36		
		1.Rakunat	340	194	RUC2	190	50	105	08.04.23	1	1	0	17	98.0 FM	Road
		2.Rakunat Gelagela Sett.	628	818	GHC2	564	107	300	11.04.23	1	1	1	19	RENB	Road
	5.RABUANA		1,489	1,179		1,080	226	609		2	2	0	109		
		1.Rabuana	996	735	RUC2	700	126	391	08.04.23	1	1	0	36	98.0 FM	Road
		2.Rabuana Gelagela	494	443	GHC2	380	100	218	14.04.23	1	1	0	73	RENB	Road
	6.KORERE 1		640	741		728	152	400		2	2	0	30		
		1.Korere 1	504	433	RUC2	489	108	267	08.04.23	1	1	0	26	98.0 FM	Road
		2.Korere Clifton Sett.	136	307	GHC2	239	44	133	13.04.23	1	1	0	4	RENB	Road
	7.KORERE 2		874	694		788	135	409		2	2	0	27		
		1.Korere 2	534	395	RUC2	439	68	228	08.04.23	1	1	0	13	98.0 FM	Road
		2.Korere Clifton Sett.	340	299	GHC2	349	67	181	12.04.23	1	1	0	14	RENB	Road
	8.TALVAT		1,421	1,208		1,400	322	762		2	2	0	26		
		1.Talvat Sikut Sett.	1,421	1,208	STAP	1,286	286	695	09.04.23	1	1	0	0	RENB	Road
		2. Talvat Original Village			RUC2	114	36	67	09.04.23	1	1	0	26	98.0 FM	Boat
	9.MATUPIT 1		565	432		476	127	282		1	1	1	34		
		1.Matupit 1	565	432	RUC2	476	127	282	09.04.23	1	1	1	34	98.0 FM	Road
	10.MATUPIT 2		1,249	1,084		1,130	274	627		1	1	1	120		
		1.Matupit 2	1,249	1,084	RUC2	1,130	274	627	09.04.23	1	1	1	120	98.0 FM	Road
	11.MATUPIT 3		804	757		706	150	394		1	1	1	78		
		1.Matupit 3	804	757	RUC2	706	150	394	09.04.23	1	1	1	78	98.0 FM	Road

LLG	WARD	Village/ Census Unit	Estimated 2022 Population from 2000 Census	2022 Estimated from 2016 Data	Health Centre	Population Surveyed	House Holds Surveyed	Nets Issued	Date Of Distribution	Village	Digicel	Bmobile	Houses With Radios	Radio Networks	Comments
	12.MATUPIT 4		173	243		253	50	138		1	1	1	9		
		Matupit 4	173	243	RUC2	253	50	138	09.04.23	1	1	1	9	98.0 FM	Road
	13.MATUPIT 5		1,910	2,373		2,185	459	1,172		2	1	0	87		
		Matupit Sikut Sett.	1,619	2,373	STAP	2,168	454	1,162	09.04.23	1	1	0	87	RENB	Road
		2.Ulamatis	291	0	VHC	17	5	10	12.04.23	1	0	0	0	RENB	Village under VHC but Covered under Gelagela HC due to proximity
		New Village		0	VHC										Non Existant
		Gelagela H/C		0	VHC										Non Existant
RABAU URBAN			6,814	5,634		5,242	985	2,681		32	31	31	421	30	
	1.RABAU TOWN		6,814	5,634		4,848	918	2,500		29	28	28	393		
		1.CPL	787	295	RUC3	324	84	176	11.04.23	1	1	1	19	98.0 FM	Road
		2.Rabaul Shipping	460	272	RUC3	311	48	163	11.04.23	1	1	1	7	98.0 FM	Road
		3.George Brown St.	726	62	RUC3	307	41	150	11.04.23	1	1	1	16	98.0 FM	Road
		4.Tunnel Hill	387	204	RUC3	138	26	75	11.04.23	1	1	1	21	98.0 FM	Road
		5.Bates St.	216	331	RUC3	301	50	143	11.04.23	1	1	1	18	98.0 FM	Road
		6.Page St.	277	141	RUC3	288	50	140	11.04.23	1	1	1	19	98.0 FM	Road
		7.2/22nd St.	300	76	RUC3	297	42	153	11.04.23	1	1	1	25	98.0 FM	Road
		8.Brennaan St.	183	118	RUC3	128	22	63	11.04.23	1	1	1	2	98.0 FM	Road
		9.Griffith St.	209	159	RUC3	282	50	141	11.04.23	1	1	1	10	98.0 FM	Road
		10.Townsend St.	352	89	RUC3	67	14	39	11.04.23	1	1	1	2	98.0 FM	Road
		11.Sect. 68	108	238	RUC3	195	29	101	11.04.23	1	1	1	3	98.0 FM	Road
		12.Habour Lane	167	255	RUC3	220	31	105	11.04.23	1	1	1	29	98.0 FM	Road
		13.Philips St.	153	238	RUC3	222	50	117	11.04.23	1	1	1	37	98.0 FM	Road
		14.Balanataman St.	242	86	RUC3	126	40	74	10.04.23	1	1	1	29	98.0 FM	Road
		15.Vester St.	209	86	RUC3					1					Included Under Street I
		16. Street I	2	0	RUC3	177	36	94	10.04.23	1	1	1	26	98.0 FM	Road
		17.Catholic Mission Area	354	214	RUC3	129	31	71	11.04.23	1	1	1	25	98.0 FM	Road
		18.Bishop St.	328	143	RUC3	134	35	75	11.04.23	1	1	1	0	98.0 FM	Road
		19.Admin Blocks	124	103	RUC3	119	22	56	10.04.23	1	1	1	14	98.0 FM	Road
		20.Sect. 103/118/119/126	58	0	RUC3	98	21	61	10.04.23	1	1	1	3	98.0 FM	Road
		21.Sect 100	12	0											Abandoned
		22.Rabaul 26	159	0											Abandoned
		23.Samoa St.	94	257	RUC3	107	26	59	10.04.23	1	1	1	4	98.0 FM	Road
		24.Park St.	5	116	RUC3	57	13	33	10.04.23	1	1	1	6	98.0 FM	Road
		25.Mango Avenue	65	128	RUC3	260	48	131	11.04.23	1	1	1	6	98.0 FM	Road
		26.Hoskins St.	267	382	RUC3	164	36	82	11.04.23	1	1	1	20	98.0 FM	Road
		27.Groves St.	70	0	RUC3	149	24	79	10.04.23	1	1	1	10	98.0 FM	Road
		28.Sect. 63	277	0	RUC3	99	24	50	10.04.23	1	1	1	10	98.0 FM	Road
		29.Observatory	44	65	RUC3	35	4	17	11.04.23	1	1	1	0	98.0 FM	Road
		30.Wanliss St.	145	285	RUC3	114	21	52	11.04.23	1	1	1	16	98.0 FM	Road
		31.Governor Hahl Drive	33	345	RUC3					1	1	1	16		Included Under Sec 63
				0											Road
		Wards In Existence		0		394	67	181		3	3	3	28		
		Ward 15		169	RUC3	147	28	68	10.04.23	1	1	1	10	98.0 FM	Road
		Ward 8		357	RUC3	113	17	52	11.04.23	1	1	1	4	98.0 FM	Road
		Section 69		416	RUC3	134	22	61	10.04.23	1	1	1	14	98.0 FM	Road
				0											
WATOM ISLAND RURAL			3,886	3,316		3,182	747	1,694		7	6	3	396	7	
	1.RAKIVAL		516	389		473	124	247		1	1	1	97		
		1.Rakival	516	389	NBH2	473	124	247	16.04.23	1	1	1	97	R.E.N.B	Boat
	2.TARANATA \ RAU		1,174	883		873	200	452		2	1	0	166		
		1.Taranata	251	212	NBH2	188	50	101	17.04.23	1	0	0	24	R.E.N.B	Boat
		2.Rau	923	671	NBH2	685	150	351	20.04.23	1	1	0	142	R.E.N.B	Boat/Trek
	3.VALAUR		590	468		420	100	225		1	1	1	93		
		1.Valaur	590	468	NBH2	420	100	225	16.04.23	1	1	1	93	R.E.N.B	Boat
	4.VUNABUK		570	380		352	87	194		1	1	1	40		
		1.Vunabuk	570	380	NBH2	352	87	194	16.04.23	1	1	1	40	R.E.N.B	Boat
	5.VUNAKABAI		373	580		531	86	273		1	1	0	0		
		1.Vunakabai	373	580	NBH2	531	86	273	16.04.23	1	1	0	0	R.E.N.B	Boat
	6.VUNAULAIAR		663	615		533	150	303		1	1	0	0		
		1.Vunaulaiar	663	615	NBH2	533	150	303	16.04.23	1	1	0	0	R.E.N.B	Boat/Trek

Symbols: RUC=Rabaul Urban Clinic, GHC=Gelagela Health Center,
STHC=Sikut/Talvat Health Center, NBH=Nonga Base Hospital, VH=Vunapope Hospital