

ROTARIANS AGAINST MALARIA



LONG LASTING INSECTICIDAL NET DISTRIBUTION REPORT

HELA PROVINCE Komo Magarima and Koroba Kopiago Districts

Carried Out In Conjunction With The Provincial Government And Church
Health Services Of Hela Province

With Support From The Global Fund

29th March to 31st July 2022



Table of Contents

Executive Summary	3
Background.....	4
Schedule	7
Methodology.....	7
Results	11
Conclusions.....	12
Acknowledgements	14
Appendix One – History Of LLIN Distribution In PNG	14
Appendix Two – Malaria In Hela Province Compared With Other Provinces	19
Appendix Three - Malaria By Altitude	21
Appendix Four – Other Photographs	22

Annex One Detailed Distribution Data For Komo Magarima District

Annex Two Detailed Distribution Data For Koroba Kopiago District

Executive Summary

Hela Province is a highlands province in the west of mainland Papua New Guinea (PNG). Most of the province lies above 1200m where malaria is either epidemic, rare or absent altogether in areas above 2000m. However, there are some areas that lie below 1200 metres in Kopiago, Paga LLG of Koroba and in some areas of Komo Magarima. It is in these latter areas, and areas up to 1600m where the LLIN distribution has been concentrated. This covers only about 22% of the population of Hela with the remaining 78% considered practically malaria free. The biggest problem is that many of the malaria areas, particularly in Koroba Kopiago are situated in very remote areas which in some cases require air transport to reach them.

The family level survey and distribution of Long-Lasting Insecticidal Nets (LLINs) was carried therefore only in those areas that are below 1600 metres which are found in the districts of Koroba Kopiago and Komo Magarima between 29th March and 31st July 2022. In Tari District, no one received nets as it is considered practically malaria free.

Table One shows the estimated population to be covered by the program together with the actual population found along with the number of LLINs distributed by district. In total, 28,103 LLINs were distributed to a population of 55,735 people. This resulted in distribution of 50 nets for every 100 people in the province.

TABLE ONE – Population And Nets Distributed

District	Population Of Targeted Areas In 2019	Target Population 2022	Population Surveyed 2022	House Holds Surveyed 2022	Nets Issued 2022	Nets Distributed Per 100 People	Growth Rate Against 2018 Survey
Komo Magarima	27,453	30,349	31,093	5,508	15,705	51	4.24
Koroba	26,671	31,365	24,642	4,697	12,398	50	-2.60
Totals	54,124	61,714	55,735	10,205	28,103	50	0.98

A further 58 LLINs were donated to health centres as nets were surplus to requirement, were no longer in bales and in most cases could not be easily returned to a central location. These nets would be distributed to pregnant mothers and for use over hospital beds where needed.

The overall operational cost of the programme was 159,217 Kina (Approximately US\$ 45,490) resulting in a cost of about 5.65 Kina or US\$1.62 per net delivered. This was about 38.0% under the anticipated budget, mainly due to reduce aircraft costs as Kopiago was accessible by road where in the past it could only be reached by air. There were also saving in Human Resources, particularly in trekking costs due to greater accessibility of some areas than in the past.

Overall, the distribution went well in Hela Province with excellent collaboration from provincial and district health authorities which resulted in all targeted communities being reached and all household receiving nets.

Feedback from partners and communities suggest they were happy with the methodology used as the process appeared transparent to all concerned. However, as always, there were a few families who complained that they did not receive enough nets but for the most part it is believed that this was a result of families not fully understanding the allocation system used.

Global Fund donated, supplied and covered all distribution costs for all the nets for Hela Province. The nets distributed in Hela Province were Yorkool nets which came from China. RAM hopes that these are better quality LLINs than those distributed in the last few years.

The history of LLIN distribution in PNG and Hela Province is discussed in Appendix One and the malaria situation and stratification of malaria in Hela Province are discussed in Appendix Two and Appendix Three. Historically it can be said that LLINs have had a tremendous impact on malaria in Papua New Guinea but recent distributions in lower lying provinces have not resulted in decreased malaria but malaria appears to have been practically eliminated from the highlands of PNG. We hope that these nets are sufficient to keep malaria at bay in all these areas of Hela for another three years.



Fig.1 – Initial Meetings With PHA In Tari (Left) And Microplanning In Dauli Health Centre (Right)

Background

Rotarians Against Malaria (RAM) is a nationally based organisation which was formed in 1997 by the Port Moresby Rotary Club in recognition of the tremendous burden that malaria imposes on the people of PNG.

RAM has an organizational mandate to work in malaria control and the distribution of LLINs in Papua New Guinea and has been working for many years with the National Department of Health (NDOH) and other partners including multilateral and bilateral agencies such as UNICEF and WHO (World Health Organisation), NGOs and church groups. (See Appendix One for full history of LLIN Distribution)

Since 2010, RAM has been coordinating the distribution of nets to all districts and provinces on a three-year recurrent cycle. This effectively means that RAM visits every targeted village in PNG every three years. RAM has been funded by the Global Fund since 2009 and from 2017 to 2020 also from Against Malaria Foundation (AMF) which supplied PNG with the majority of its nets in 2017 and from 2018 onwards to all areas below 1600m only where most of the malaria transmission can be found. During the period 2017 to 2020, the Global Fund resources were therefore mainly used to fund the LLIN distribution costs and other relevant administration costs. However, in 2020, PNG was lucky to receive a donation of net from the Chinese Government and these were used for all areas between 1600-2000m of altitude.

It should also be noted that since 2015, the National Malaria Control Program no longer distributes nets in areas above 2000m as these are now considered too cold for malaria transmission to occur. The situation has changed in 2021. AMF no longer is a donor to PNG and all costs have now reverted to Global Fund. With this change, RAM will have difficulties covering areas from 1600-2000m but we are very fortunate in that the Global Fund allowed

saving from 2020 to be used to procure nets for 2021 for this altitude. At present, the funding situation for altitudes of 1600-2000 remains tenuous for 2022 and 2023 and it appears that all distributions in the future will be limited to areas below 1600m only.

Generally, LLINs have been distributed to household level throughout the country but when shortage of funds occurred, different strategies of distribution have been used as mentioned above.

PNG can be roughly divided into five epidemiological zones.

- a) Areas which lie above 2000m in altitude which no longer receive LLINs as malaria transmission is not considered likely at these altitudes.
- b) Low lying areas of the country up to 1200m which have stable malaria endemicity and often have poor access to health continue to have household distributions.
- c) Areas from 1200 to 1600m which are generally considered to be of low transmission potential but traditionally have had occasional malaria epidemics due to poor immunity and changing weather conditions. LLIN distribution continue in these settings.
- d) Highlands regions between 1600 to 2000m in altitude such as Mount Hagen which have low malaria endemicity and generally easy access to health services. These are low priority areas and when funding is not available are left out. However, to date, these areas have been covered. From 2015 to 2016, these areas received nets for Under Five children only, and since 2017, to date, RAM has managed to find alternative sources to cover these areas. For example, in 2020, nets for these areas have been sourced from the Chinese Government and in other areas from the Global Fund. Fortunately, there was sufficient funds to cover these areas in 2021. Sadly, from 2022 there are no funds to cover these areas.
- e) In urban and peri-urban areas such as Port Moresby which are low lying areas with easy access to health, nets will not be distributed during funding constraints. Nets to these areas will be supplied through the private sector. Similarly, due to funding constraints in 2015, Lae City had Under Five Campaign LLINs only.



Fig.2 – Microplanning Meetings In Komo Health Centre (Left) And Koroba Health Centre (Right)

As a result of this stratification and when funds had been reduced such as at the end of 2014, areas above 2000m no longer received nets and areas from 1600 to 2000m only received under five campaigns in 2015 and 2016. However, fortunately, due to the LLIN donation from the Against Malaria Foundation (AMF) in 2017, all areas received household distribution of nets except areas above 2000m, and some urban areas such as NCD, Goroka, Mount Hagen and Mendi. After 2018, AMF only donated nets to areas below 1600m but the country has been lucky to find funding to fill this gap of between (1600-2000m) in 2019, 2020 and for 2021 through donations from the Global Fund (2018-2021) and the Chinese Government (2020).

However, funding for areas between 1600-2000 metres has now stopped as the Global Fund allocations are not presently enough to cover these areas above 1600m.

One of the conditions of the AMF donation is that RAM would strengthen the way in which surveys are carried out. These new innovative processes are described in the Methodology Section. These methodologies are now being carried out since the beginning of 2017. The major change to the survey methodology suggested by AMF is that previously a village meeting was called after a survey was carried out where names of family members were read out to ensure that all households had been surveyed. Instead of this process, a summary of every village surveyed is posted for 24 hours in a public place so that villages can ensure that all their family members have been included in the survey. As a further verification process, members of RAM and local health staff team carry out random house surveys of 6% of households in every village to ensure that the survey process has been carried out correctly.

For household LLIN distributions, regardless of where they are carried out, they must include a survey and a distribution phase though implementation methods may considerably vary depending on specific circumstances. RAM's approach has been to concentrate on programme quality thus RAM develop methodologies that ensure that all recipients in an area actually receive nets and that this can be reported accurately.

The other major change to the original PNG programme of 2004 to 2009 carried out by the NDOH is that nets are allocated to families on a needs basis rather than simply the number of people in the family. Data analysis of National Capital District (NCD) data has shown that this gives a ratio of nets needed to be about 47 for every 100 people. In the previous LLINs distribution of Round-3 in 2006 to 2010, nets were allocated at a rate of one net to every 2.5 people. With the programme only receiving 80% of LLIN needs, and most provinces distributing for example two nets to families of three, in practically every province, nets ran out before the end of the distribution. The RAM programme makes all attempts to assure that this distribution anomaly does not happen by collecting all population information at the beginning of the program and then allocate the nets based on family needs. This strategy is practiced to ensure that all families receive nets throughout any given province. The only scenario where survey and net distribution may be done simultaneously is in very remote locations where it is not practically possible to return a second time to a location. This is particularly the case in remote villages which can only be reached by boat or very long treks and it is costly and impractical to return to the villages for a second time.



Fig.3 Training Survey Volunteers In Wanikipa Health Centre (Left) And Agali Health Centre (Right)

In terms of coordination, RAM officers are allocated to specific LLGs or health centres where they coordinate the programme together with local health staff. In this capacity, RAM officers act as facilitators in terms of technical guidance to district health teams in each LLG as well as acting as financial officers and assuring quality control of activities taking place.

Schedule

Referring to Table Two, it can be seen that the main distribution in Hela Province started at the end of March and was only fully completed four months later by the end of July due to difficulties finding aircraft to go to remote areas of Wanikipa and Agali.

TABLE TWO
General Timetable Of Activities In Hela Province

District	Survey		Distribution	
	Start	Finish	Start	Finish
Komo Magarima	31.03.22	15.04.22	05.04.22	24.04.22
Koroba	29.03.22	25.07.22	12.04.22	31.07.22

Methodology

Prior to planning and implementation, a master list of all villages of Hela Province was drawn up using data from the 2000 Census and the last RAM survey of 2019 in Hela Province. Villages in the list were organised by LLG and Ward. In this master list, the estimated population for 2020 for each village was estimated and recorded in two ways. Firstly, the population of each village is estimated using population figures from the 2000 Census and the estimated annual growth rate for Hela Province and then secondly, by taking the population surveyed in 2017 and 2018 and applying the annual growth rate to each village. In addition to this, based on altitude maps, all villages in highlands provinces are categorised and colour coded by altitude zones of below 1200m, 1200 to 1600 metres, 1600 to 2000 metres and lastly those villages above 2000 metres. Only those villages below 1600 metres will receive nets.

In all areas, Health Centres form the hub from which distribution takes place to the respective villages in each health centre's catchment area. Therefore, with the planning data at hand, RAM staff work together with the Provincial Health Office to allocate every village to its nearest health centre (government or Church Based) and outlines how each village is reached from each health centre. From this it is possible to create a budget, estimate how many nets are needed to be sent to each health centre and work out any other logistic considerations such as use of airplanes or boats to deliver nets to some remote areas.

Once all logistical needs are calculated and nets delivered to the province or district, a RAM team will travel to the province. Once they are in the province, RAM officers are allocated to work with each health centre which becomes the centre of operations for that area.

With the arrival of RAM officers, each health facility identifies health staff members or non-health community volunteers to be involved with the programme. If local health staff are selected, then they are referred to as District Health Team (DHT) but if a non-health staff is selected then they are termed as a Team Leader. Both DHTs and Team Leaders are responsible for the survey and distribution of nets. Each DHT and Team Leader works only in the area in which the health facility is based.

Before any activities take place, RAM officers are expected to work with health staff and other team leaders to make detailed plans (micro-planning) of their activities for training, survey, verification and distribution of nets. This process involves making maps of the area, deciding how many teams are needed, and then making detailed work plans for each of the team members. This process also involves verifying that no villages have been left out of the census list and that the whole area is covered.

Also prior to field activities in any given LLG or health centre, a social awareness campaign was carried out in all villages informing villagers of the upcoming survey and distribution. This was also used as an opportunity for RAM officers to become familiar with each area. During this process, key malaria messages were also discussed with villagers such as the need to use LLINs every night.

During the social awareness campaign, a daylong training meeting is normally held at each health facility for all DHT members in that area who jointly carry out the micro-planning exercise. These training and micro-planning sessions as well as all other activities associated with the programme are coordinated by RAM project officers together with health counterparts at provincial and district levels. RAM officers also have the responsibility to ensure the LLINs operation is kept in line with the original budget.

Survey

The survey was carried out in the following way.

- 1) When arriving at a village and before starting the census process, a meeting was held with village elders explaining the process.
- 2) If village elders have an up to date list of all village occupants, the team would use this list to compile a census but still visit every household to confirm this information.
- 3) Where a village is small, e.g., less than 30 families, team members may carry out the census by themselves.



Fig.4 – Training Village Survey Volunteers In Dauli HC (Left) And Komo HC (Right)

- 4) Where villages are large, village volunteers were identified with the assistance of the village chiefs, elders, health staff and councillors. One volunteer was chosen for each group of about 50 families with volunteers chosen by natural divisions in the village e.g., clans where one volunteer would make a list of only one clan. These volunteers were trained to carry out the survey by actually surveying houses with the team leaders supervising and assessing the recording. Once the team leader was confident that the volunteers knew the survey methodology, they were left to continue with the household survey with survey teams returning within an agreed period to verify the work of the survey volunteers, collect survey books and also to pay the survey volunteer, provided that the work was carried out correctly. The training of volunteers may occur in groups or individually depending on access to the village and its proximity to other villages.
- 5) For each household surveyed, all family members who normally reside at the household for a minimum of nine months were recorded by Name, Age, Sex and Relationship to head

of household. All names and other information were recorded in the survey book with one survey form being used for each household.

- 6) After surveying a household, a white copy of the census form was given to the head of household or most senior person present in the household.
- 7) Where a whole household was absent, information was taken from the neighbours and the white survey form left with them.
- 8) In all cases, after the census/list was finished, all the information about the households and number of household members is entered into a summary sheet. This list is then hung in a public place where all villages can verify that the right number of family members for each household has been recorded and that all families have been included in the survey. After the list has been in a public place for 24 hours, then the volunteer requests for the RAM officer and or DHT to visit the village.
- 9) RAM officers and DHTs must visit three households randomly from each survey book (6%) and verify that the survey has been carried out correctly. Only when this has been done, then the volunteer can be paid.
- 10) If a village was surveyed by more than one volunteer, then volunteers were asked to work together so that lists can be hung together and the village volunteers can be verified at the same time. This process also ensures that households do not appear on more than one list. After this process, both the volunteers and the village elders sign a form to verify that this was done.
- 11) All village volunteers received a standard payment of 20 kina a day. Experience has shown that volunteers can usually only survey about 25 households a day, so for the most part, they would receive up to two days' allowance to complete a survey book (50 households).
- 12) All volunteers were also given a small training manual. Contained in this training manual are key health education messages about malaria which volunteers are expected to discuss with households. This perhaps is the only project in PNG that is able to reach down to potentially every household in the country.



Fig.5 – Household Verification In Koroba

To aid with the survey, the master plan with names of all census units in all the wards in the district had been printed out and given to all the DHTs and team leaders. This document also provides the projected population per census unit as well as other information which might be useful to the area concerned.

After collecting survey data from each village, the information is immediately compared with the data on the master sheet. Where the surveyed population is very different from the projected population, the project staff make enquiries into the reasons for these discrepancies.

Following the survey, all data was entered into a computer where possible or entered into a master sheet of the area concerned. For each village, nets were allocated to each family on a

needs basis and this is also entered into the computer or master sheet. This process ensured that all villages received nets and that there would be no shortfalls.

The needs basis in PNG is based on the assumption that children under the age of six sleep with their parents, after which boys and girls are grouped separately from their parents. Nets are also allocated based on the number of children in the house, their ages, and whether there are other dependents living in the households such as grandparents. A full description of the allocation system can be obtained from RAM officers but suffice to say a family of four could receive between one to four nets depending on the sex and age of family members.

Nets are allocated to each LLG based on assumed populations of each LLG and it was important prior to the distribution to ensure that when allocations had been carried out to families and villages that there were enough nets available to cover each and every family.

Distribution

There was no official launch for the LLINs distribution in Hela Province. However, prior to distribution there was a social awareness phase where the project teams informed communities about the arrival of the distribution teams, especially those accessible by road.

The LLINs were then distributed to teams depending on the needs of each village. The LLINs were then distributed by village or wards depending on whether villages were close together. In this latter case, a central location was identified in the ward and then distribution of nets was carried out. In terms of distribution sites, villages were organised in different ways to make the flow of nets easy and effective. However, the actual organisation depended on each team and the structure of the various groups receiving nets.

All net packaging was opened at distribution site with a district code printed on each net e.g., HL22 meaning Hela Province 2022. This code is added to identify nets to assist in future monitoring exercises as well as discouraging householders from selling the nets on the open market.

Some examples of the process used to control the crowd includes;

- Arranging the people according to the serial numbers in the survey books e.g., 72001 - 72050 and then calling the names and the serial numbers.
- Call the names of the owners of the households, collect the white copy and give the nets.
- Wait for everyone to come to the distribution site, collect all the white copies and sort the copies with the pink copies. Call the names on the white copies and give the nets.

Some of the following control methods were used.

- Everyone who presented with a white copy was given LLINs at the distribution site with LLINs only given to the owner of the house or a member of the house whose name is written on the back of the survey form.
- Those people who lost the white receipts were left to the end of each distribution, with nets only being issued if the name of the person collecting the nets was found on the back of the pink copies.
- For those families who were absent at the time of distribution, their names were written in a form – MOSQUITO NETS HELD IN TRUST BY VILLAGE CHIEFS FORM and the nets allocated to missing families were given to chiefs or any person entrusted by the community with the forms for these families to collect their LLINs later.
- Householders are now being asked to make a thumb print as proof of delivery of nets to a household. The Global Fund had formally asked that householders should sign for delivery of nets. This was considered problematic as many householders are illiterate and even

where householders can write, this process takes a long time in what is often a very chaotic and charged environment where speed is of the essence.

It should also be noted that surveys and distributions took place at more or less the same time in some remote places of Hela Province. This is particularly true for mountainous villages or villages at the end of rivers which might take several hours or days to reach. In these instances, estimations based on the 2000 Census data and local knowledge used to pre-allocate nets. Teams were then dispatched to these areas with nets. On arrival in these remote places, surveys took place and were immediately followed by a distribution based on the survey results.

Other details

In the case of Hela Province, all LLINs were ultimately delivered to Lae by ship from China in two containers. These nets were from Yorkool a company which has supplied PNG with LLINs in the last. All these nets are light blue in colour. All nets arriving in Lae were first stored in the premises of Express Freight Management who had cleared the nets. After this, they were moved to Tari by Mapai Transport where they were stored at Tari Provincial Hospital.

Results

Table Three shows the LLIN distribution data by district and Table Four by Local Level Government (LLG). These tables give the actual population surveyed together with the number of LLINs distributed by district. In total, 28,103 LLINs were distributed to a population of 55,735 people in the two districts. This resulted in distribution of 50 nets for every 100 people in the province.

TABLE THREE
Nets Distributed At District Level In Hela Province

District	Population Of Targeted Areas In 2018	Target Population 2022	Population Surveyed 2022	House Holds Surveyed 2022	Nets Issued 2022	Nets Distributed Per 100 People	Growth Rate Against 2018 Survey
Komo Magarima	27,453	30,349	31,093	5,508	15,705	51	4.24
Koroba Kopiago	26,671	31,365	24,642	4,697	12,398	50	-2.60
Totals	54,124	61,714	55,735	10,205	28,103	50	0.98

TABLE FOUR
Nets Distributed At LLG Level In Hela Province

LLG	District	Population Of Targeted Areas In 2018	Target Population 2022	Population Surveyed 2022	House Holds Surveyed 2022	Nets Issued 2022	Growth Rate Against 2018 Survey	Nets Distributed Per 100 People
Hulia Rural	Komo Magarima	7,916	8,751	10,713	1,741	5,207	10.61	48.6
Komo Rural	Komo Magarima	19,537	21,598	20,380	3,767	10,498	1.42	51.5
Awi Pori Rural	Koroba	4,091	4,523	3,949	769	1,622	-1.17	41.1
Lake Kopiago Rural	Koroba	22,580	26,842	20,693	3,928	10,776	-2.87	52.1
Totals		54,124	61,714	55,735	10,205	28,103	0.98	50.4

Referring to Table Three and Table Four, it can be seen that the overall population growth rate is less than recorded in most of the country, particularly in Koroba Kopiago where it would

appear that people are leaving to find somewhere else to live and work. On the other hand, the high increase in Komo may be due to people coming to work on the Liquid Natural Gas (LNG) project which is situation in Komo LLG of Komo Magarima District.

Table Five shows that 58 nets were left over at the end of the program and were donated to health centres. In general, these nets were left where the nets were loose and no longer in bales or the nets were very few or the nets could be difficult to return to a central location. In general, these nets would be used for hospital beds or for antenatal mothers.

TABLE FIVE
Nets Donated To Health Facilities

District	LLG	HC	Donated
Koroba Kopiago	Awi Pori	Paga HC	28
	Lake Kopiago	Wanikipa HC	30
TOTAL			58

With reference to Table Six, it can be seen that the overall operational cost of the programme was 159,217 Kina (Approximately US\$ 45,490) resulting in a cost of about 5.65 Kina or US\$1.62 per net delivered. This was about 38.0% under the anticipated budget, mainly due to reduce aircraft costs as Kopiago was accessible by road where in the past it could only be reached by air. There were also saving in Human Resources, particularly in trekking costs due to greater accessibility of some areas than in the past.

TABLE SIX
Cost Of Programme In Hela Province (All Costs in Kina)

Expense Types	Budget	Actual	Variance	% Variance
Training	K9,300.00	K4,260.00	5,040.00	45.8
Human Resources	K98,219.98	K50,910.00	47,309.98	51.8
Fuel	K7,980.00	K9,604.00	-1,624.00	120.4
Vehicle Hire	67,200.00	K67,990.00	-790.00	101.2
Aircraft Hire	K39,000.00	K15,306.36	23,693.64	39.2
Stationary	K6,000.00	K6,469.35	-469.35	107.8
5% Contingency	K25,304.75	K4,678.15	20,626.60	18.5
Totals	K253,004.73	K159,217.86	K93,786.87	62.9

TABLE SEVEN
Cell and Radio Coverage In Hela Province

District	Villages	House Holds Surveyed	Digicel	Bmobile	Houses with Radios	Villages With Radio Networks
Komo Magarima	66	5,508	42	0	127	7
Koroba Kopiago	151	4,697	127	0	3,655	129
Total	217	10,205	169	0	3,782	136

Referring to Table Seven, this shows the radio and cell phone coverage for Hela Province in the area covered was very good in most places in Koroba Kopiago but surprising radio coverage was very poor in the areas of Komo where most of the commercial LNG program is occurring.



Fig.6 – Distributions In Benaria

Conclusions

Overall, it can be said that the LLIN distribution in Hela Province was generally a huge success both in terms of results and great collaboration between staff from RAM, provincial and district health authorities, and the United Church, Lutheran Church, Evangelical Church Health Services who have a presence in the districts receiving nets. Through this collaboration, the data suggests that all villages and practically all families in those villages received nets despite any local challenges.

There were some challenges which include:

- Outbreak of violence in some parts of Hela due to election related reasons resulted in delay of operations as officers had to wait till it was safe for them to continue operations.
- The worst affected areas were in Paga and distributions have still yet to be completed. In this area only survey for Ward 24 in Awi Pori LLG was carried out as the RAM officer in charge could not go into this area for distribution due to tribal fighting in the area.
- There was a Malaria outbreak in Wanikipa and Agali and RAM could not get any aircraft company to service this area due to elections as politicians were taking up all available planes throughout the country. For this reason, RAM had to return more than two months later to do distributions in the Wanikipa and Agali areas when AMF flight became available.

On the positive side,

- There was excellent collaboration between the all health staff and RAM.
- Despite the challenges faced, officers managed to complete their operations successfully.

Other than this, as with other provinces in the country where RAM has operated in over the last ten years, the methodologies used this time, including survey verification processes appeared practical and were openly welcomed by both villagers and implementers, particularly the practice of hanging up the list of names in the middle of the village following a survey. This allowed communities to feel that they were part of a transparent process. This is not to say that perhaps some extra people managed to slip into the books, but in general, it was felt that the system was fair and included practically everyone concerned. The use of the master lists also ensured that all villages were reached and accounted for.

The review of the data prior to the distribution was also important. This ensured that all villages and families received the correct numbers of nets. The 2000 Census Lists were very important

to ensure that survey teams reached all villages: without the complete list of villages, it would be very difficult to make a detailed report.

The greatest complaint still received from communities was the number of nets they received. Even though the team explained the logic of how the allocation of nets is calculated, some families still expect one net per person, others expect it to be based on a fixed allocation based on the number of people in the family, and yet others thought they would be given nets based on the number of nets they stated they already had. This highlights that a better system of explaining the allocation system still needs to be developed. In general, unlike some previous districts covered by RAM and DHTs of Hela Province assisted in the allocation of the nets which meant they were in a better position to explain the distribution system on the ground. Nevertheless, despite all the difficulties involved, it would appear that the vast majority of community members accepted the outcome and there were no real problems or complaints encountered.

Acknowledgements

On behalf of the Rotarians Against Malaria household distribution team who worked in Komo Magarima and Koroba Kopiago districts, we would like to sincerely acknowledge and thank the Hela Province Health Authority and the District Health Staff of the two districts for the excellent help and cooperation during the Long Lasting Insecticide Nets (LLINs) distribution programme.

In particular, we would like to thank at provincial level Dr James Kintwa (Chief Executive Officer) and his team with special thanks to Sr Rondie Hapolo (Director Public Health), Ms Melisha Andrew (Provincial Disease Control Officer), Paul Hilau (Information Officer) and Mr Roger Hali (Provincial Malaria Supervisor).

For the district staff, we would like to sincerely thank all those who tirelessly took part in the programme, and in particular we would like to mention the following people who were instrumental in providing the local expertise and advice from planning to implementation of the programme in the two districts namely in the table overleaf.

Komo Magarima District

Name	Occupation	Institution
Mr. Ben Saki	Officer in Charge	Benaria Sub Health Centre
Mr. Yokie Titipsep	Nursing Officer	Benaria Sub Health Centre
Ms. Emma Waiange	Community Health Worker	Huluma Community Health Post
Mr. Magret Poge	Officer in Charge	Juni Sub Health Centre
Mr. Paul Pati	Officer in Charge	Komo Health Centre
Miss. Aily Alebako	Community Health Worker	Komo Health Centre
Mr Gilbert Brick	Nursing Officer	Komo Health Centre
Miss. Rita Moses	Nursing Officer	Komo Health Centre
Mrs. Betty Maga	Officer in Charge	Mananda Sub Health Centre
Mrs. Janet Tony	Community Health Worker	Mananda Sub Health Centre
Mrs. Anna Kambara	Community Health Worker	Mananda Sub Health Centre
Mr. Charles Tiamia	Officer in Charge	Para Sub Health Centre
Mrs. Cancy Tumbu	Community Health Worker	Para Health Centre
Mrs. Stanford Tendele	Community Health Worker	Para Health Centre
Mr Jackson Horia	Officer in Charge	Wabia Health Centre

Koroba Kopiago District

Name	Occupation	Institution
Mr. Raymond Saul	Community Health Worker	Paga Health Centre
Mr. Francis Wai	Community Health Worker	Paga Health Centre
Mr. Erick Lomba	Officer in Charge	Wanikipa Health Centre
Mr. David Ope	Community Health Worker	Kelabo Sub Health Centre

RAM would like to specially acknowledge the support received from established and local service providers for logistical support namely; Mapai for transporting two containers from Lae to Hela and for having them delivered to and off-loaded in Tari Hospital yard.

RAM also thanks Pishon Hire Car, Manawa Hire Car and all the local hire car owners for providing their service for this operation. We would not have reached many communities without the dedication of the drivers. RAM also extends its gratitude to MAF Aviation who finally provided us aircraft support to cover Wanikipa and Agali .RAM would like to also thank GMT Enterprise Service Station for supplying bulk fuel for the operation.

RAM also thanks all the church run health facilities coordinated under United Church, Lutheran Church, Evangelical Church of PNG and lastly to all the Government run facilities for allowing their staff to work with the RAM team.

Last but not the least, RAM would like to extend our acknowledgement and appreciation to all the hard working volunteers and other local community leaders for ensuring all homes were surveyed and assisted in distributing all the nets. RAM thanks you all very much for your hard work, support and local expertise in making the overall program a success.

Appendix One – History Of LLIN Distribution In PNG

The use of Insecticide Treated Nets (ITNs) started in PNG in 1985 when the PNG Institute of Medical Research (IMR) conducted one of the first trials demonstrating the health impact of treating mosquito nets with insecticide. The study, done near Western, showed a reduction of *P. falciparum* incidence and prevalence in children below five years of age sleeping under permethrin-treated nets. The protective effect of insecticide-treated nets (ITNs) was also confirmed in many other trials around the world. As a consequence of such findings, the national malaria control program in PNG started emphasizing the use of ITNs in 1989. However, no regular or large-scale distribution of ITNs was carried out at this time.

In the following years, coverage with mosquito nets and other control interventions remained patchy and low in many parts of PNG. It was during this period that Rotarians Against Malaria (RAM) was created from the Port Moresby Rotary Club in 1997. Using a donation of 150,000 treated nets given to them from the National Department of Health (originally from AusAid), RAM successfully ran a revolving fund of nets in which nets were sold at a price which allowed the proceeds to buy more nets. RAM did this successfully for many years distributing about 45,000 treated nets a year from 2000 to 2004.

Prior to 2004, most treated nets had to be re-treated every six months or a year which requires a lot of work and organisation. In early 2004 everything changed with the introduction of Long-Lasting Insecticidal Nets (LLINs) which would last for 20 heavy duty washes and effectively no longer required to be treated repeated. This change in nets also coincided with the introduction of the Global Fund into PNG known as the Global Fund Round 3.

From 2005 to 2009 the malaria programme in PNG received and delivered about 2.3 million nets throughout the country at a rate of one net for every 2.5 people. The delivery of nets to village level was under the provincial health authorities and reached most parts of the country with Rotarians Against Malaria (RAM) being responsible in delivering the containers of nets to the provinces from Port Moresby and Lae where the nets arrived from overseas.

While the programme was very successful in some areas it was not so successful in others. Problems included slow release of funds from central to provincial level, some provinces not following technical guidelines given resulting in some areas not been covered, and technical and financial reporting leaving a lot to be desired in many of the provinces. When further funds became available in what is known as the Global Fund Round Eight, it was decided that Rotarians Against Malaria (RAM) would take over the coordination of the LLIN programme.

This change has resulted in RAM being responsible for the overall coordination of the LLIN distribution of LLINs in the country particularly in the areas of quantification, procurement, reporting and delivery to provincial and district level. However, the actual delivery of nets to village level is a collaboration between RAM, provincial health authorities and district health and health centre staff.

Fig.1 shows the distribution of nets to districts and provinces from 2006 to 2009 while Fig.2 shows the distribution of nets from 2010 to 2014 and Fig.3 shows the distribution from 2015 to 2017 which includes under five distributions in 2016 and 2017. Under Five distributions had been carried out in areas above 1600m and in Port Moresby and Lae City due to lack of funds. This situation changed when support from Against Malaria Foundation was received.

Up until December 2020, a total of 13.0 million LLINs had been distributed to household level under the coordination of RAM. Therefore, with the 2.5 million nets distributed from 2006 to 2009, this means that about 15.5 million nets have been delivered to household level in PNG since 2006. This is more than one net per every person in PNG. RAM has also distributed

about another 1.5 million nets to health centres for distribution to pregnant women and for prisons and boarding schools.

It should also be noted that alongside developments related to treated mosquito nets, the first cases of chloroquine-resistant malaria were reported in 1976. This progressed rapidly to widespread resistance of *P. falciparum*, and to a slightly lesser extent *P. vivax*, to chloroquine, amodiaquine and sulphadoxine-pyrimethamine (SP). In studies conducted between 2003 and 2005, even combination regimens of these drugs faced up to 29% resistance of *P. falciparum*². This situation together with Global Fund Round 8 also saw the introduction of artemether lumefantrine branded as Malawan and IPT (Intermittent Preventative Treatment) for antenatal women using Fansidar (Pyrimethamine Dapsone).

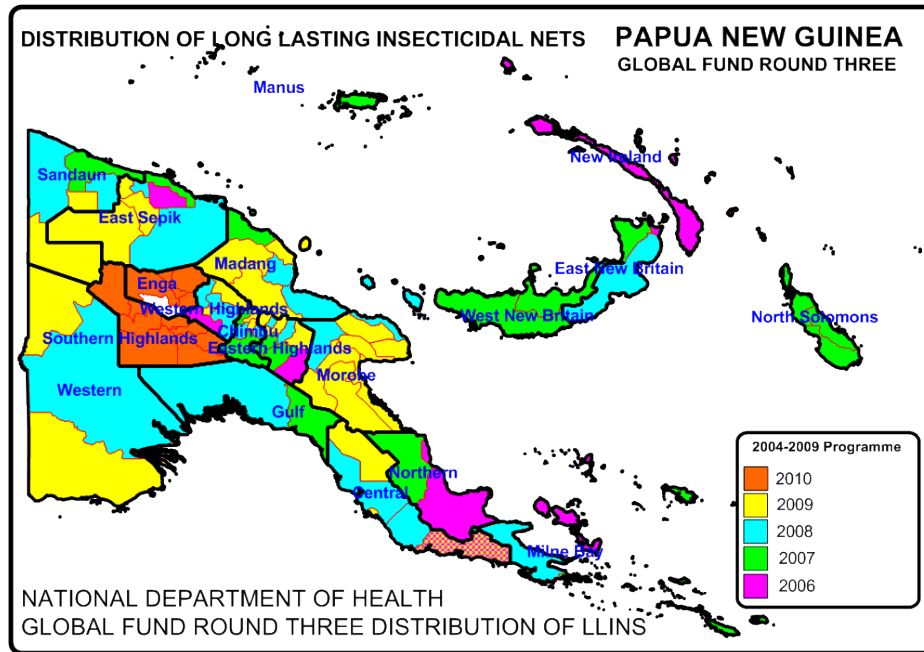


Fig. 1 Distribution Of Nets Under National Department Of Health From 2006 To 2010

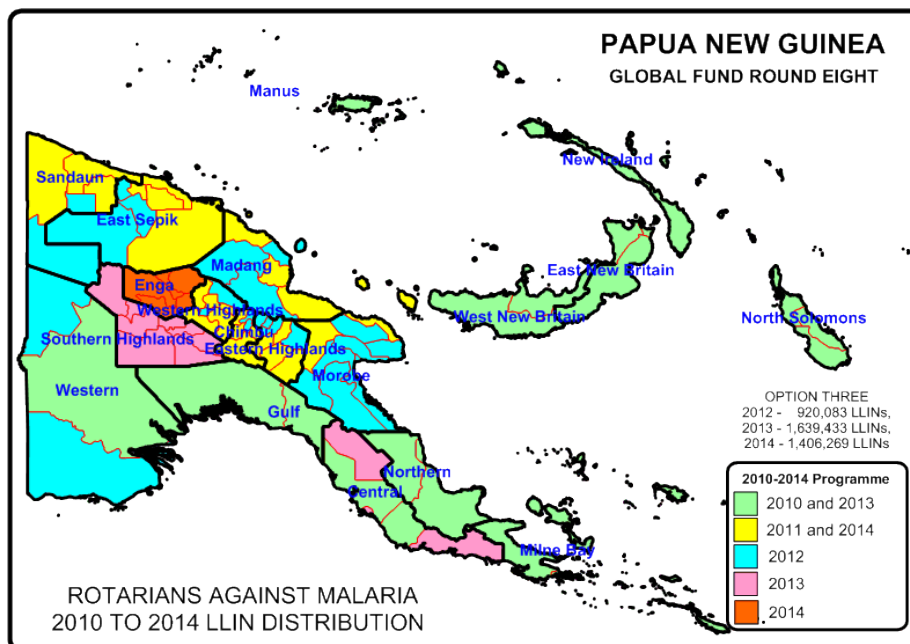


Fig.2 Distribution of LLIN Programme 2010 to 2014

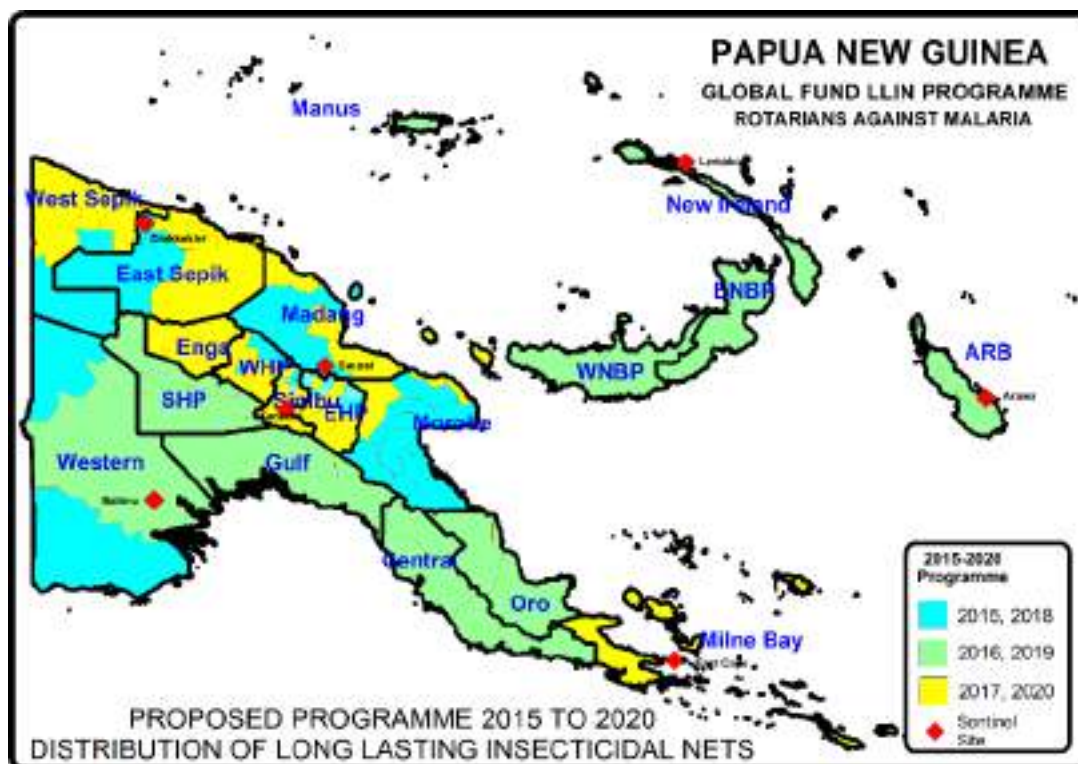


Fig.3 LLIN Distribution Programme 2015 to 2020

TABLE ONE - LLINs Delivered In PNG Under Coordination Of RAM From 2010

Period	Dates	Districts	Provinces	Nets Delivered
Phase One (2010-2011)	Nov 09 - Oct 11	50 Districts	18 Provinces	1,890,448
Year 3 (2012)	Nov 11 - Sep 12	27 Districts	10 Provinces	832,671
Year 4 (2013)	Oct 12 - Sep 13	28 Districts	12 Provinces	1,210,391
Year 5 (2014)	Oct 13 - Sep 14	23 Districts	11 Provinces	1,374,791
Year 5 (2014) No Cost Extension	Oct 14 - Dec 14	Okapa, Lufa, Madang, Angoram, Maprik, Yangoru Saussi, Wewak, Aitape Lumi, Nuku and Vanimo Green	EHP, Madang, East Sepik and Sandaun	454,806
Year 6 (2015)	Jan - Dec 2015	29 Districts	11 Provinces	932,822
Year 7 (2016)	Jan - Dec 2016	27 Districts	13 Provinces	805,597
Year 8 (2017)	Jan - Dec 2017	36 Districts	13 Provinces	1,543,947
Year 9 (2018)	Jan - Dec 2018	27 Districts	11 Provinces	1,211,922
Year 10 (2019)	Jan - Dec 2019	26 Districts	12 Provinces	1,266,525
Year 11 (2020)	Jan - Dec 2020	28 Districts	13 Provinces	1,495,368
	Jan - Mar 2021	Aitape Lumi, Nuku, Yangoru Saussi, Maprik, Angoram, Mount Hagen, Del, Jimi	Sandaun, East Sepik, Western Highlands, Jiwaka,	232,042
	Apr - Jun 2021	Yangoru Saussi, Jimi, Gumine, Kundlaw a Gembogl, Sinasina, Yongomugl, Asaro, Kainantu and Ungai Benna	Jimi, Chimbu, EHP	377,865
	Jul - Sep 2021	Bulolo, Menyamya, Lae, Finschafen, Naw aeb, Huon Gulf, Kabw um, Usino, Bundi, Karkar, Wosera Gaw i	Morobe, Madang, East Sepik	426,413
	Oct - Dec 2021	Middle Ramu, Ambunti Drekkiekier	Madang, East Sepik	265,136
New Funding Model (2015-2021)				8,557,637
Round Eight (2010 - 2014)				5,763,107
Overall Total Phase One and Phase Two And NFM				14,320,744

Appendix Two – Malaria In Hela Province Compared With Other Provinces

Fig.1 shows the decrease of malaria from 2007 to 2015 in all provinces, Fig. 2 shows the actual malaria incidence in 2020 compared with other provinces and Fig.3 shows annual malaria trends from 2017 to 2021. In Hela, it can be seen from Fig.1 that malaria decreased from 2007 to 2015 by 85% which is similar to most of the Highlands Provinces. In Fig.2, in 2020 it can also be seen that in Hela Province the malaria incidence is 13 per 1000 which together with Southern Highlands Province is the lowest incidences of malaria anywhere in the country. Fig. 3 and Fig.4 show the malaria incidence by year with Fig.4 showing malaria incidence compared with net distributions. It can be noted that in general, LLIN distributions in the past have resulted in decreases of malaria incidence which has practically eliminated malaria in most highlands regions except for low lying remote areas such as Wanikipa. Wanikipa has shown that LLLINs in recent years are not keeping malaria down, but fortunately, in higher areas, the LLINs appears to have kept malaria at bay.

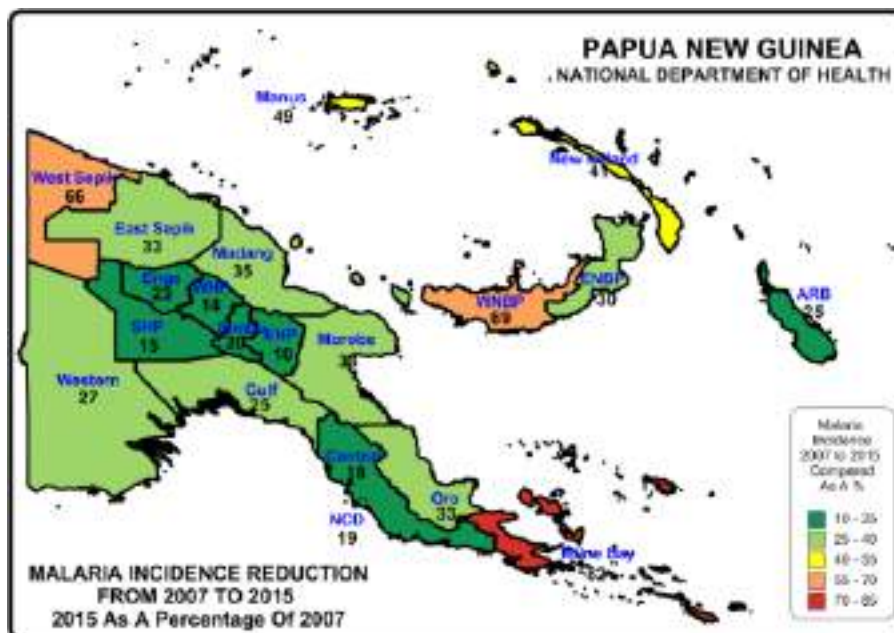


Fig.1 – Relative Reduction Of Malaria In Provinces Of PNG

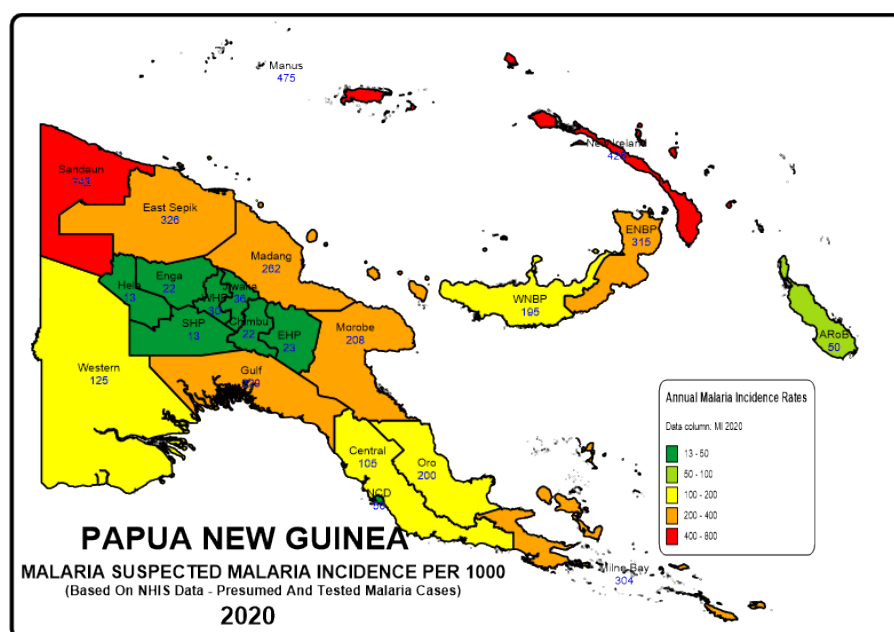


Fig.2 – Reported Malaria Incidence In 2020

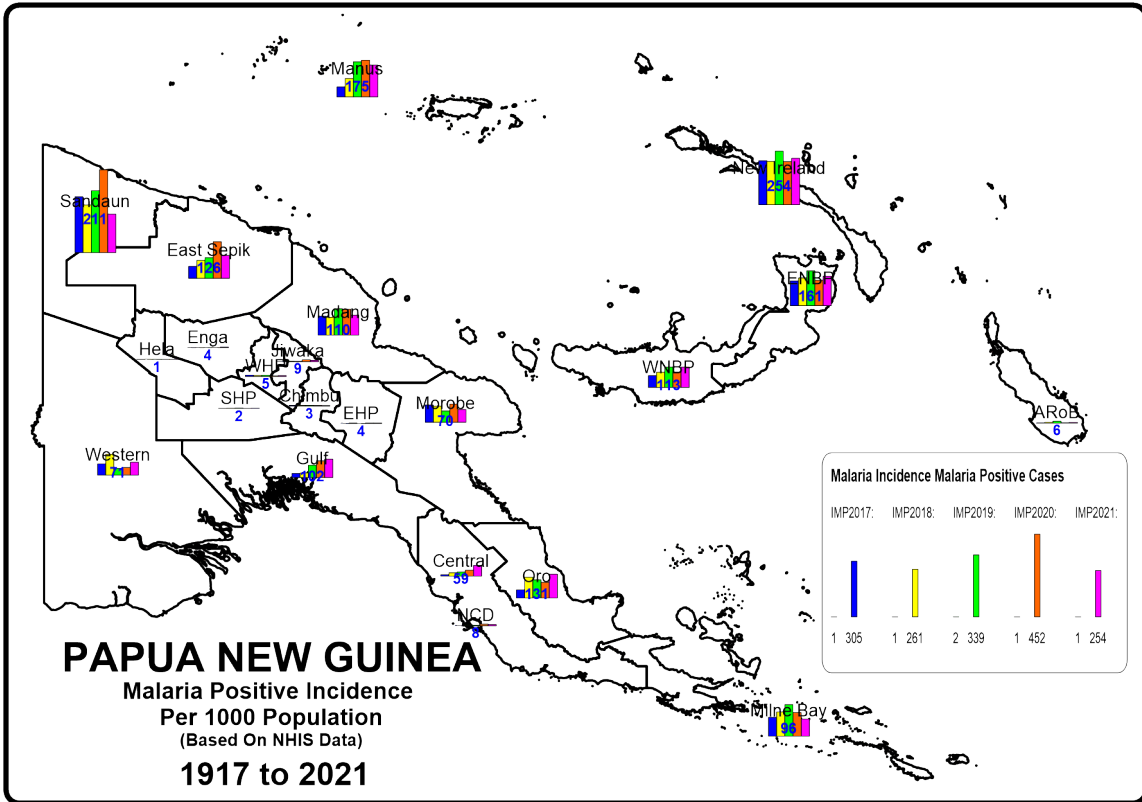


Fig. 3 - Reported Malaria Incidence In PNG From 2016 To 2020

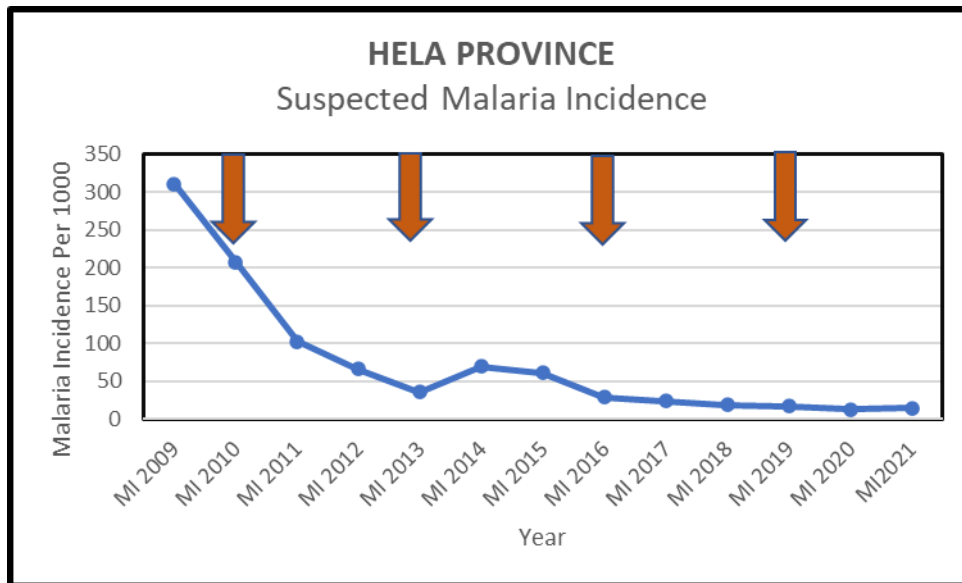
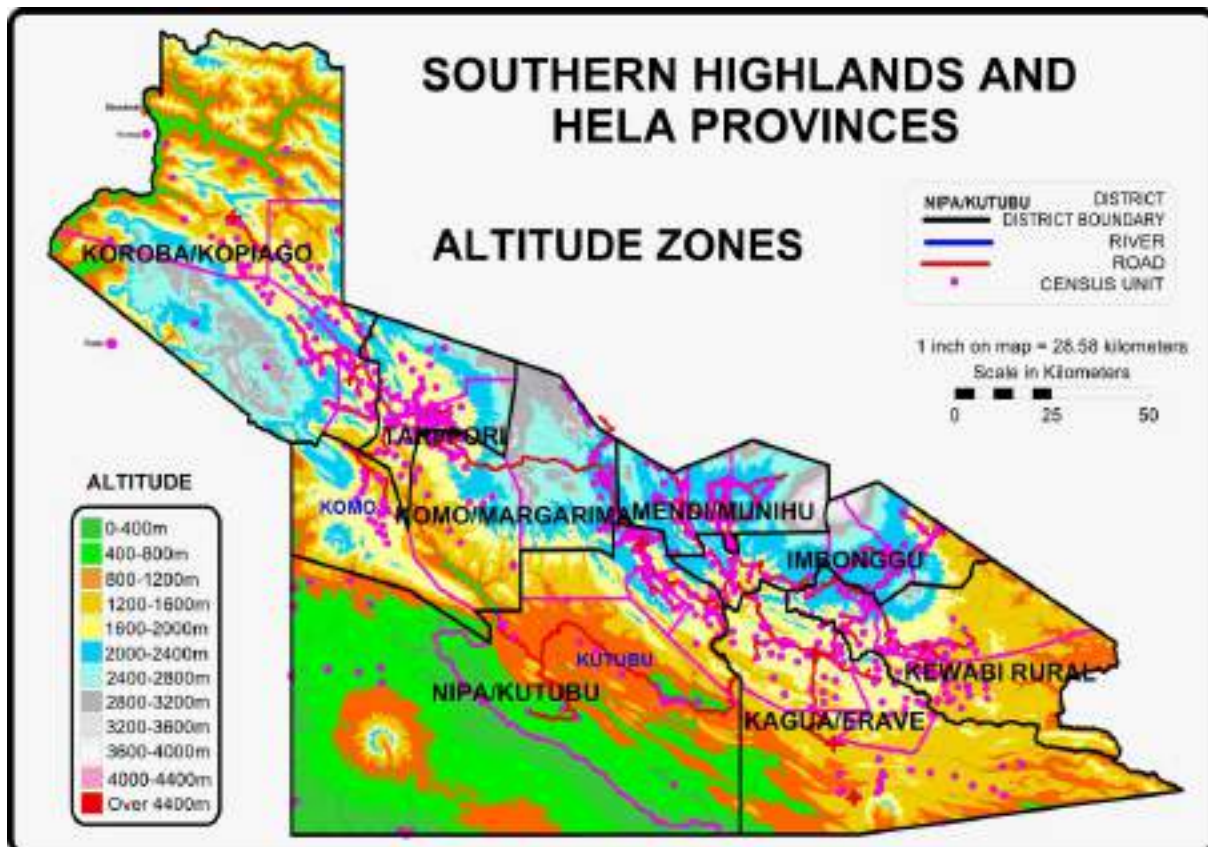


Fig. 4 – Malaria Incidence Versus Distribution Of Nets
Orange represent LLIN distributions done in Hela Province in 2010 and 2013, 2016 and 2019

Appendix Three - Malaria By Altitude

Hela Province is a highlands province in the west of mainland Papua New Guinea (PNG). Most of the province lies above 1200m where malaria is either epidemic, rare or absent altogether in areas above 2000m. However, there are some areas that lie below 1200 metres in Kopia, Paga LLG of Koroba and in some areas of Komo Magarima. It is in these latter areas, and areas up to 1600m where the LLIN distribution has been concentrated.

Fig. 1 Altitude Zones In Southern Highlands And Hela Province



Appendix Four – Other Photographs



Distributions In Dauli (Left) And Komo (Right)



Distributions In Koroba



Issues In Paga – Getting Around A Fallen Tree (Left) And Getting Stuck In Mud At Night (Right)
Distributions In Inu Health Centre (Left) and Kantobo (Right)

OTHER PICTURES



Storing Nets In Komo

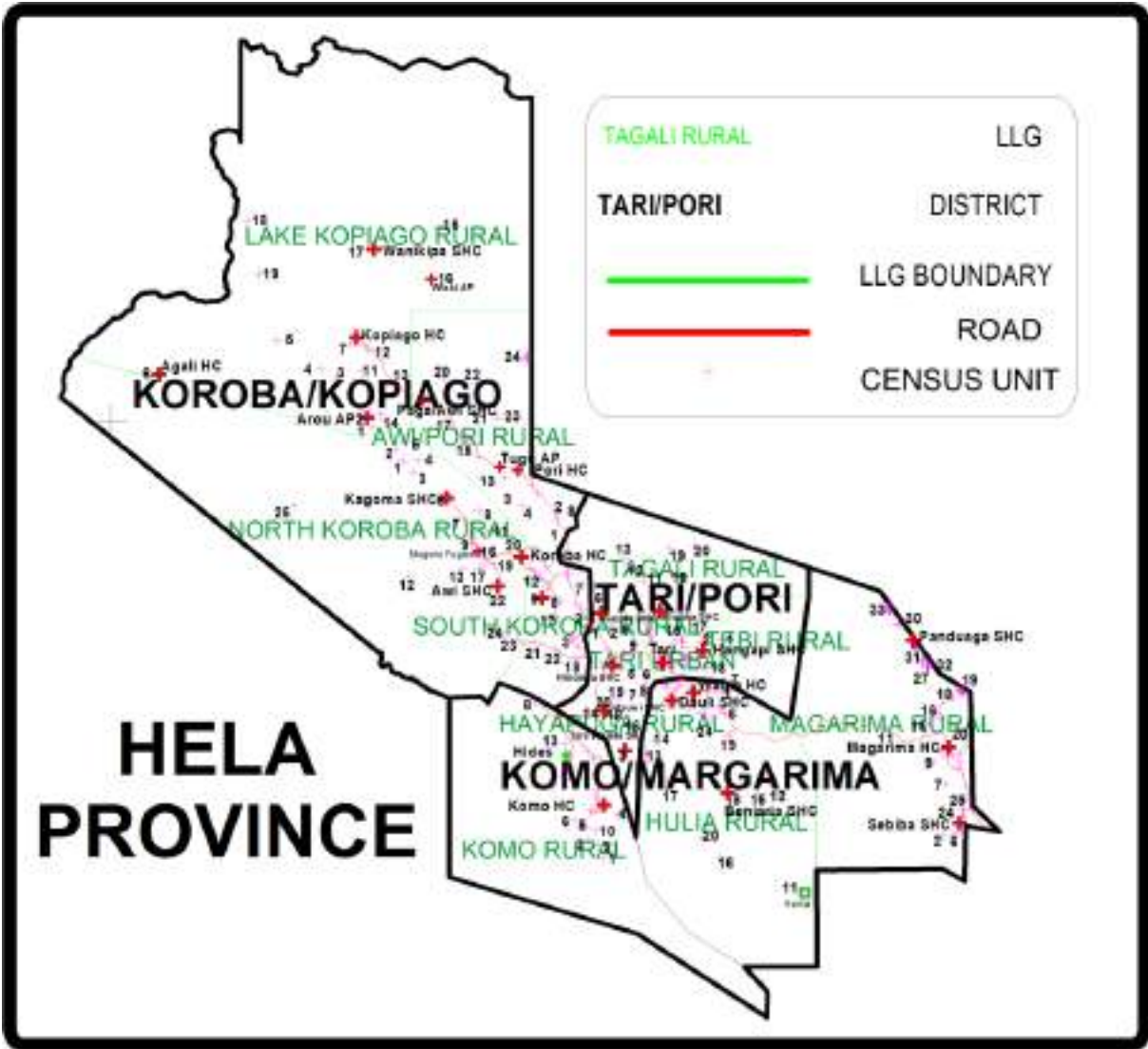


Distribution Of Nets In Kopiago (Right) and Komo (Right)



Boat Transport In Inu (Left) And Kantobo (Right)

Appendix Five - Map Of Hela Province Showing Census Points Of 2000 Census



Happy Customers In Koroba Kopiago

ANNEX ONE

HELA PROVINCE
KOMO MAGARIMA DISTRICT POPULATION 2022
LLIN DISTRIBUTION SUMMARY SHEET

VILLAGE CODING

Areas Above 2000m
Areas Between 1600m To 2000m
Areas Between 1200m to 1600m
Areas Below 1200m

LLG	WARD	VILLAGE	Estimated 2022 Population Based On 2000 Census	Estimated 2022 Population Based On 2019 Survey	Health Centre	Population Surveyed	House Holds Surveyed	Nets Issued	Date Of Distribution	Villages	Digicel	Bmobile	Houses With Radios	Radio Networks	Comments
KOMO\ MAGARIMA			89,973	89,973		31,093	5,508	15,705		66	42	0	127	7	
HULIA RURAL			21,209	43,561		10,713	1,741	5,207		35	11	0	127	7	
1	ALUAKAMBE		724	1,523											
		Aluakambe	724		Wabia HC										Road
		Taraka			Wabia HC										Road
		Kubale			Wabia HC										Road
		Kiea			Wabia HC										Road
		Hongoea			Wabia HC										Road
		Lomo			Wabia HC										Road
2	KELA		331	324											
		Poroli Keya	331		Wabia HC										Road
3	HULUMA		1,820	4,648											
		Hakone	311		Wabia HC										Road
		Tapamu	569		Wabia HC										Road
		Homukoni	259		Wabia HC										Road
		Lomia	586		Wabia HC										Road
		Haro	94		Wabia HC										Road
		Hali			Wabia HC										Road
4	PIANGOANDA		1,547	3,363											
		Hatani	383		Wabia HC										Road
		Iba Hamua	648		Wabia HC										Road
		Piango	516		Wabia HC										Road
		Poroli			Wabia HC										Road
5	PUJU		987	2,927											
		Terepaja	482		Wabia HC										Road
		Tamburuma	505		Wabia HC										Road
		Tombela			Wabia HC										Road
		Puju			Wabia HC										Road
		Kandepo			Wabia HC										Road
6	TIGIBI 1		1,925	4,253											
		Hagalia	70		Wabia HC										Road
		Libi	130		Wabia HC										Road
		Piragali	132		Wabia HC										Road
		Palebo	119		Wabia HC										Road
		Hirwako	63		Wabia HC										Road
		Kereni	210		Wabia HC										Road
		Aluma	94		Wabia HC										Road
		Halo	130		Wabia HC										Road
		Peli	76		Wabia HC										Road
		Toma/halapi	900		Wabia HC										Road
		Yangale			Wabia HC										Road
		Tipi-lpa			Wabia HC										Road
7	TIGIBI 2		2,052	1,794											
		Parupali	1,091		Wabia HC										Road
		Hale	961		Wabia HC										Road
		Pokoria			Wabia HC										Road
		Tirika			Wabia HC										Road
		Waliwali			Wabia HC										Road
8	WABIA 1		1,697	4,067											
		Wenani	728		Wabia HC										Road
		Wabiago	182		Wabia HC										Road
		Pipi	243		Wabia HC										Road
		Taloanda	181		Wabia HC										Road
		Tabaraba	363		Wabia HC										Road
9	YANGOME		1,555	1,371											
		Yangome	488		Wabia HC										Road
		Pai	508		Wabia HC										Road
		Tobani	268		Wabia HC										Road
		Amburu	292		Wabia HC										Road
		Taraka			Wabia HC										Road
10	DAMITA 1		536	698		954	149	439		2	1	0	1		
		Nagia	355	249	Beniaria SHC	316	50	145	23.04.22	1	0	0	0		Road
		Kiwali	181	449	Beniaria SHC	638	99	294	22.04.22	1	1	0	1		Road
11	HOMA		289	1,852		1405	225	738		4	1	0	53		
		Homa	128	555	Inu HC	572	85	304	06.04.22	1	1	0	33	NBC	Road
		Tabiya	161	730	Inu HC	496	94	265	05.04.22	1	0	0		NBC	Trek
		Yarale		413	Inu HC	169	29	86	06.04.22	1	0	0	12	NBC	Trek
		Yogolopo		154	Inu HC	168	17	83	06.04.22	1	0	0	8	NBC	Trek
12	DIMU		255	743		833	150	385		3	0	0	0		
		Dimu	255	232	Beniaria SHC	306	50	142	23.04.22	1	0	0	0		Trek
		Kandere		212	Beniaria SHC	277	50	125	23.04.22	1	0	0	0		Trek
		Herebame		298	Beniaria SHC	250	50	118	23.04.22	1	0	0	0		Trek
13	HOMA PAWA		412	897		714	116	366		3	1	0	73		
		Laite	164	378	Inu HC	426	66	218	05.04.22	1	1	0	44	NBC	Road
		Dibaga	185	256	Inu HC	158	28	78	05.04.22	1	0	0	12	NBC	Trek
		Watersource	63	262	Inu HC	130	22	70	05.04.22	1	0	0	17	NBC	Trek
14	HONAGA		523	636		1078	166	554		4	4	0	0		
		Honaga	216	163	Wabia HC	311	44	159	24.04.22	1	1	0	0		Road

LLG	WARD	VILLAGE	Estimated 2022 Population Based On 2000 Census	Estimated 2022 Population Based On 2019 Survey	Health Centre	Population Surveyed	House Holds Surveyed	Nets Issued	Date Of Distribution	Villages	Digicel	Bmobile	Houses With Radios	Radio Networks	Comments
		Neango	307	229	Wabia HC	267	48	140	22.04.22	1	1	0	0		Road
		Taiya/Kori		0	Wabia HC	193	31	99	23.04.22	1	1	0	0		Road
		Tamburuma		244	Wabia HC	307	43	156	23.04.22	1	1	0	0		Road
15	LAU		463	985		1635	265	757		4	0	0	0		
		Lau	463	97	Beniaria SHC	306	39	142	22.04.22	1	0	0	0		Trek
		Tumbe		369	Beniaria SHC	608	100	282	22.04.22	1	0	0	0		Trek
		Harara		390	Beniaria SHC	435	76	203	22.04.22	1	0	0	0		Trek
		Huliwa		128	Beniaria SHC	286	50	130	22.04.22	1	0	0	0		Trek
16	BAGALE		171	317		716	100	338		2	0	0	0		
		Alo	73	163	Beniaria SHC	418	50	200	22.04.22	1	0	0	0		Trek
		Bero	98	155	Beniaria SHC	298	50	138	22.04.22	1	0	0	0		Trek
17	YABAGARU		390	985		878	156	446		3	3	0	0		
		Yabagaru	390	0	Wabia HC										Name of Clan
		Awatangi(Camp 7)		231	Wabia HC	238	43	115	22.04.22	1	1	0	0		Road
		Wangopa		528	Wabia HC	517	88	268	23.04.22	1	1	0	0		Road
		Wangopa/ Makonali		226	Wabia HC	123	25	63	23.04.22	1	1	0	0		Road
18	DAVIDAVI		632	750		794	137	382		3	0	0	0		
		Davi Davi	311	268	Beniaria SHC	282	50	137	20.04.22	1	0	0	0		Trek
		Hangapo	210	156	Beniaria SHC	181	38	87	23.04.22	1	0	0	0		Trek
		Hibura'a	111	326	Beniaria SHC	331	49	158	20.04.22	1	0	0	0		Trek
19	KUYALI		402	1,612											
		Pianganda	184	0	Wabia HC										Road
		Piwa	36	0	Wabia HC										Road
		Kuyali	182	0	Wabia HC										Road
		Ambua		0	Wabia HC										Road
20	YARALE		523	558		709	150	331		4	0	0	0		
		Homabu	289	107	Beniaria SHC	219	50	101	22.04.22	1	0	0	0		Trek
		Yarale	234	91	Beniaria SHC	132	26	65	22.04.22	1	0	0	0		Trek
		Hoiya		252	Beniaria SHC	128	30	59	20.04.22	1	0	0	0		Trek
		Malumba		108	Beniaria SHC	230	44	106	20.04.22	1	0	0	0		Trek
21	HOGAMBE		687	1,083											
		Jaluma	339	0	Wabia HC										Road
		Hogoni	348	0	Wabia HC										Road
		Hora		0	Wabia HC										Road
		Tandianda		0	Wabia HC										Road
22	TIGIGBE 3		1,359	2,109											
		Hadani	558	0	Wabia HC										Road
		Parupali	178	0	Wabia HC										Road
		Tija	13	0	Wabia HC										Road
		Naua	290	0	Wabia HC										Road
		Keo	34	0	Wabia HC										Road
		Tiya	286	0	Wabia HC										Road
23	DAULI 1		700	1,423											
		Yaluma	349	0	Wabia HC										Road
		Palebo	351	0	Wabia HC										Road
		Pagei		0	Wabia HC										Road
		Pipu		0	Wabia HC										Road
		Amburu		0	Wabia HC										Road
		?		0	Wabia HC										Road
		?		0	Wabia HC										Road
		?		0	Wabia HC										Road
24	DAMITA 2		116	332		997	127	471		3	1	0	0		
		Beniaria Station	116	50	Beniaria SHC	309	50	145	21.04.22	1	1	0	0		Trek
		Haigapo		146	Beniaria SHC	462	50	220	23.04.22	1	0	0	0		Trek
		Nakuta		136	Beniaria SHC	226	27	106	23.04.22	1	0	0	0		Trek
25	DAULI 2		425	960											
		Dauli Tchr's Coll.	425	0	Wabia HC										Road
		Palepo		0	Wabia HC										Road
		Tiaigala		0	Wabia HC										Road
		Ariago		0	Wabia HC										Road
26	DAULI 3		91	274											
		Dem School	91	0	Wabia HC										Road
		Dauli HC		0	Wabia HC										Road
		Teachers Colledge		0	Wabia HC										Road
27	PERI		478	1,735											
		Yangali/Waea	179	0	Wabia HC										Road
		Mbira	299	0	Wabia HC										Road
		Homane		0	Wabia HC										Road
		Ipahuli		0	Wabia HC										Road
		Pagayali		0	Wabia HC										Road
		Paipaya		0	Wabia HC										Road
		Tinali		0	Wabia HC										Road
28	WABIA 2		52	340											
		Wabia S/Hlth Cntr	52		Wabia HC										Road
29	WABIA 3		67	1,004											
		Tari Secondary School	67		Wabia HC										Road
KOMO RURAL			22,177	36,045		20,380	3,767	10,498		31	31	0	0	0	
1	ATARE		944	1,522											
		Tiapua	264		Komo HC										Trek
		Tandu	407		Komo HC										Trek
		Keai	273		Komo HC										Trek
		Pakaramana			Komo HC										Trek
2	AYAGAIBA		452	600											
		Ayagaiba	452		Komo HC										Trek

LLG	WARD	VILLAGE	Estimated 2022 Population Based On 2000 Census	Estimated 2022 Population Based On 2019 Survey	Health Centre	Population Surveyed	House Holds Surveyed	Nets Issued	Date Of Distribution	Villages	Digicel	Bmobile	Houses With Radios	Radio Networks	Comments
3	EGAUWI		1,366	1,083											
		Arali Kabale	449		Komo HC										4 Hr Trek
		Egauwi	454		Komo HC										4 Hr Trek
		Handulu (Tawanda)	463		Komo HC										4 Hr Trek
4	EANDA		747	465											
		Magabi	747		Komo HC										4 Hr Trek
5	PAMI		617	790											
		Pami	443		Komo HC										4 Hr Trek
		Baya	174		Komo HC										4 Hr Trek
6	EGAIPA		949	952											
		Egaipa	367		Komo HC										Trek
		Napo Irabiya	582		Komo HC										Trek
7	AYAGATE		798	639		900	155	469		2	2	0	0		
		Purupale	625	426	Komo HC	545	88	271	18.04.22	1	1	0	0		3 mins Road
		Kuali	172	213	Komo HC	355	67	198	18.04.22	1	1	0	0		10 mins Road
8	KULU NOGOLY		2,265	5,225		3082	963	1692		3	3	0	0		
		Kulu	656	1,512	Komo HC	615	300	363	21.04.22	1	1	0	0		Road 10 mins
		Nogoli Camp	962	1,822	Komo HC	1257	300	677	21.04.22	1	1	0	0		Road 10 mins
		Yuni	646	1,890	Komo HC	1210	363	652	21.04.22	1	1	0	0		Vicinity
9	EMBREALI		607	2,109		2076	280	1070		3	3	0	0		
		Pirip	416	1,160	Komo HC	1102	144	567	17.04.22	1	1	0	0		Road 10 mins
		Pulako	133	261	Komo HC	339	50	175	17.04.22	1	1	0	0		Road 10 mins
		Embreali	57	689	Komo HC	635	86	328	17.04.22	1	1	0	0		Road 10 mins
10	PADUA		942	863											
		Padua	453	0	Komo HC										Road 15 mins
		Maliame	41	0	Komo HC										Road 15 mins
		Tulupari	449	0	Komo HC										Road 15 mins
11	KUNGU		871	682		858	150	426		2	2	0	0		
		Kungu	691	417	Komo HC	504	100	251	18.04.22	1	1	0	0		Road 15 mins
		Kunia Eanda	179	265	Komo HC	354	50	175	19.04.22	1	1	0	0		Road 15 mins
12	TALI \ ANGU		792	584		692	125	344		3	3	0	0		
		Tali/Angu	227	247	Komo HC	255	48	127	18.04.22	1	1	0	0		Road 25 mins
		Karobi	247	235	Komo HC	237	41	117	18.04.22	1	1	0	0		Road 25 mins
		Tipakua	318	102	Komo HC	200	36	100	18.04.22	1	1	0	0		Road 25 mins
13	LAYAKO		2,245	3,447		4228	660	2162		7	7	0	0		
		Layako	589	398	Komo HC	324	53	172	19.04.22	1	1	0	0		Trek 2hrs
		Yagu Hanamanda	569	178	Komo HC	614	100	310	19.04.22	1	1	0	0		Trek 2hrs
		Tiabini Ibia	547	0	Komo HC	632	90	319	19.04.22	1	1	0	0		Trek 2hrs
		Belopa	540	549	Komo HC	646	99	329	19.04.22	1	1	0	0		Trek 2hrs
		Perabu		1,208	Komo HC	710	142	385	19.04.22	1	1	0	0		Vicinity Road 3 mins
		Tolapu		573	Komo HC	602	91	301	19.04.22	1	1	0	0		Road 15 mins
		Hibagu		541	Komo HC	700	85	346	19.04.22	1	1	0	0		Road 10 mins
14	PARA		1,031	4,854		3992	644	2019		7	7	0	0		
		Para 1	728	1,065	Komo HC	1047	155	516	18.04.22	1	1	0	0		5 mins Road
		Para 2	303	977	Komo HC	392	63	200	18.04.22	1	1	0	0		5 mins Road
		Anguale		876	Komo HC	914	168	471	19.04.22	1	1	0	0		45 mins Road
		Opai		696	Komo HC	420	59	216	19.04.22	1	1	0	0		50 mins Road
		Andira		296	Komo HC	447	79	228	18.04.22	1	1	0	0		5mins Road,10mins Trek
		Gamboye		517	Komo HC	485	74	247	18.04.22	1	1	0	0		10 mins Road
		Painda		0	Komo HC										Non Existant
		Tibutibu		92	Komo HC	287	46	141	21.04.22	1	1	0	0		Vicinity, 2 mins Road
		Andilea		335	Komo HC										Non Existant
15	LAITE		1,157	1,375		1711	297	878		2	2	0	0		
		Laitte	433	807	Komo HC	1200	198	607	18.04.22	1	1	0	0		15 mins Road
		Kangu	419	0	Komo HC										Non Existant
		Hides 4	304	568	Komo HC	511	99	271	18.04.22	1	1	0	0		5 Mins Road
16	MINDIRATE		1,053	1,814											
		Mindirate	1,053		Komo HC										Road
17	PUPA		708	0											
		Tabaya	435		Komo HC										Road
		Tendepa	273		Komo HC										Road
18	TURUBI TAWANDA		913	533											
		Tawanda	398		Komo HC										Road
		Turubi	442		Komo HC										Road
		Teriyaka	73		Komo HC										Road
19	TUMBITE LIGAME		1,143	3,034											
		Ligame	411		Komo HC										Road
		Tumbite	201		Komo HC										Road
		Paiana	531		Komo HC										Road
20	YANDARE		1,484	2,683		2841	493	1438		2	2	0	0		
		Yandare	896	1,700	Komo HC	1997	309	1022	18.04.22	1	1	0	0		Road 15 mins
		Gangulu	588	983	Komo HC	844	184	416	18.04.22	1	1	0	0		Road 2mins, Vicinity
21	KOMO RURAL STATION		1,094	2,789											
		Mikili	460		Komo HC										Road
		Wayai	460		Komo HC										Road
		Komo Rural Station	174		Komo HC										Road
MAGARIMA RURAL			46,586	10,366		0	0	0		0	0	0	0	0	
1	SEBIBA		2,178	3,331											
		Aku (Sebiba)	560		Sebiba SHC										Road
		Hulal	516		Sebiba SHC										Road
		Ken-Hub	261		Sebiba SHC										Road
		Kes	401		Sebiba SHC										Road
		Kaib	440		Sebiba SHC										Road
2	WAPAL		1,184	3,938											

LLG	WARD	VILLAGE	Estimated 2022 Population Based On 2000 Census	Estimated 2022 Population Based On 2019 Survey	Health Centre	Population Surveyed	House Holds Surveyed	Nets Issued	Date Of Distribution	Villages	Digicel	Bmobile	Houses With Radios	Radio Networks	Comments
		Wapal	376		Sebiba SHC										Road
		Tikili	271		Sebiba SHC										Road
		Palim	215		Sebiba SHC										Road
		Andai	323		Sebiba SHC										Road
		Tinmain			Sebiba SHC										Road
		Tinisao			Sebiba SHC										Road
		Tawe			Sebiba SHC										Road
		Sangura /Haruni			Sebiba SHC										Road
3	HENEP		1,854	1,485											
		Henep	1,067		Sebiba SHC										Road
		Kapisi	787		Sebiba SHC										Road
4	OMBAL		1,949	1,613											
		Ombal	575		Sebiba SHC										Road
		Pulim	157		Sebiba SHC										Road
		Ongura	827		Sebiba SHC										Road
		Guipte	390		Sebiba SHC										Road
5	SONGURA		1,538	0											
		Songura	240	0	Magarima HC										Road
		Pao Sar	268	0	Magarima HC										Road
		Palop	123	0	Magarima HC										Road
		Ei Peso	259	0	Magarima HC										Road
		Mungarn	250	0	Magarima HC										Road
		Enja	398	0	Magarima HC										Road
6	SOLAPEM		923	0											
		Solapem	456	0	Magarima HC										Road
		Merente	467	0	Magarima HC										Road
7	KABENDAKA		963	0											
		Kabendaka	107	0	Magarima HC										Road
		Wauwa	185	0	Magarima HC										Road
		Mayane	285	0	Magarima HC										Road
		Linapen	387	0	Magarima HC										Road
8	HOMARIA		961	0											
		Homaria	316	0	Magarima HC										Road
		Pomboranda	203	0	Magarima HC										Road
		Mapiyaka	170	0	Magarima HC										Road
		Peme	272	0	Magarima HC										Road
9	TUYA		952	0											
		Tuya	179	0	Magarima HC										Road
		Tongoma	187	0	Magarima HC										Road
		Tapurale	187	0	Magarima HC										Road
		Hinalo	210	0	Magarima HC										Road
		Pokolipi	189	0	Magarima HC										Road
10	MABIA		846	0											
		Mapia	223	0	Magarima HC										Road
		Muli Ipa	147	0	Magarima HC										Road
		Nikaure Sakura	297	0	Magarima HC										Road
		Yokote Laweya	63	0	Magarima HC										Road
		Aliakale Wiwi	115	0	Magarima HC										Road
11	TENGO		1,512	0											
		Tengo	360	0	Magarima HC										Road
		Warepe	558	0	Magarima HC										Road
		Yolomape	262	0	Magarima HC										Road
		Kerena	331	0	Magarima HC										Road
12	WABIMA		603	0											
		Wabima	77	0	Magarima HC										Road
		Tatape	435	0	Magarima HC										Road
		Wabima High School	86	0	Magarima HC										Road
		Wabima Hlth Cntr	6	0	Magarima HC										Road
13	PINGI		541	0											
		Pingi	209	0	Magarima HC										Road
		Wakaya Ipa	95	0	Magarima HC										Road
		Imame	237	0	Magarima HC										Road
14	TABALA		616	0											
		Tabala	128	0	Magarima HC										Road
		Yakama	112	0	Magarima HC										Road
		Ipale Ipa	67	0	Magarima HC										Road
		Andawana	48	0	Magarima HC										Road
		Kugu	13	0	Magarima HC										Road
		Laweya	57	0	Magarima HC										Road
		Pamu	191	0	Magarima HC										Road
15	WAMBIA		949	0											
		Wambia	296	0	Magarima HC										Road
		Huni	194	0	Magarima HC										Road
		Hukure	222	0	Magarima HC										Road
		Tombage	49	0	Magarima HC										Road
		Hengeyano	119	0	Magarima HC										Road
		Laweya	70	0	Magarima HC										Road
16	UGU 1		869	0											
		Ugu	77	0	Magarima HC										Road
		Mandiyi	142	0	Magarima HC										Road
		Malia	227	0	Magarima HC										Road
		Upiya	132	0	Magarima HC										Road
		Mangopa	292	0	Magarima HC										Road
17	UGU 2		558	0											
		Andawana	116	0	Magarima HC										Road

LLG	WARD	VILLAGE	Estimated 2022 Population Based On 2000 Census	Estimated 2022 Population Based On 2019 Survey	Health Centre	Population Surveyed	House Holds Surveyed	Nets Issued	Date Of Distribution	Villages	Digicel	Bmobile	Houses With Radios	Radio Networks	Comments
		Halele	109	0	Magarima HC										Road
		Kole-Ipa	97	0	Magarima HC										Road
		Olali	94	0	Magarima HC										Road
		Ugu	142	0	Magarima HC										Road
18	YENGARI 1		1,268	0											
		Yenagari 1	429	0	Magarima HC										Road
		Karume	282	0	Magarima HC										Road
		Mendaiba	219	0	Magarima HC										Road
		Yuhama	338	0	Magarima HC										Road
		Biako		0	Magarima HC										
19	YENGARI 2		1,622	0											
		Hunumani	408	0	Magarima HC										Road
		Kee	484	0	Magarima HC										Road
		Keta	189	0	Magarima HC										Road
		Yambali	227	0	Magarima HC										Road
		Wambia	146	0	Magarima HC										Road
		Mairane	168	0	Magarima HC										Road
20	IARU		1,085	0											
		Pingi	359	0	Magarima HC										Road
		Yongo	278	0	Magarima HC										Road
		Hiri	123	0	Magarima HC										Road
		Luipa	209	0	Magarima HC										Road
		Ulapa	116	0	Magarima HC										Road
21	YAMBARAKA		2,053	0											
		Yambaraka	488	0	Magarima HC										Road
		Poroloma	400	0	Magarima HC										Road
		Harolome	304	0	Magarima HC										Road
		Wakiale	199	0	Magarima HC										Road
		Mayulaka	327	0	Magarima HC										Road
		Kangalu	335	0	Magarima HC										Road
22	WABULAKA		1,423	0											
		Wapu	489	0	Magarima HC										Road
		Hiri Puma	443	0	Magarima HC										Road
		Hiri Hone	491	0	Magarima HC										Road
23	OLAIM		1,896	0											
		Olaim	321	0	Magarima HC										Trek
		Mariste	503	0	Magarima HC										Trek
		Poisera	196	0	Magarima HC										Trek
		Hiri	217	0	Magarima HC										Road
		Ibol	224	0	Magarima HC										Trek
		Posor	42	0	Magarima HC										Trek
		Solama	248	0	Magarima HC										Trek
		Sopda	143	0	Magarima HC										Trek
24	POISERA		2,022	0											
		Waip	342	0	Magarima HC										Trek
		Yate	495	0	Magarima HC										Trek
		Yanaru	182	0	Magarima HC										Trek
		Poisera	116	0	Magarima HC										Trek
		Olame	128	0	Magarima HC										Trek
		Ibol	135	0	Magarima HC										Trek
		Harda	261	0	Magarima HC										Trek
		Apra	212	0	Magarima HC										Trek
		Terate	151	0	Magarima HC										Trek
25	MABERA		1,141	0											
		Mabera	321	0	Magarima HC										Road
		Hones	252	0	Magarima HC										Road
		Somboral	161	0	Magarima HC										Road
		Tambila	266	0	Magarima HC										Road
		Samanda	140	0	Magarima HC										Road
26	WOIYA		976	0											
		Pul Pem	102	0	Magarima HC										Road
		Maikep	90	0	Magarima HC										Road
		Pulpape	171	0	Magarima HC										Road
		Wajob	206	0	Magarima HC										Road
		Hepisi	170	0	Magarima HC										Road
		Pul	93	0	Magarima HC										Road
		Luim	144	0	Magarima HC										Road
27	ARIAKA		1,105	0											
		Ariaka	464	0	Panduaga SHC										Road
		Awabia	184	0	Panduaga SHC										Road
		Humbirabe	457	0	Panduaga SHC										Road
28	PANDUAGA 1		1,683	0											
		Panduaga 1	1,047	0	Panduaga SHC										Road
		Honda	635	0	Panduaga SHC										Road
29	PANDUAGA 2		642	0											
		Ajape	105	0	Panduaga SHC										Road
		Mara & Yangale	109	0	Panduaga SHC										Road
		Taya & Homami	90	0	Panduaga SHC										Road
		Lube & Mariane	158	0	Panduaga SHC										Road
		Lube & Yomondaka	122	0	Panduaga SHC										Road
		Panduaga Station	57	0	Panduaga SHC										Road
30	TAUWANDA		1,516	0											
		Tauwanda	540	0	Panduaga SHC										Road
		Pipite	516	0	Panduaga SHC										Road
		Hareipa	460	0	Panduaga SHC										Road

LLG	WARD	VILLAGE	Estimated 2022 Population Based On 2000 Census	Estimated 2022 Population Based On 2019 Survey	Health Centre	Population Surveyed	House Holds Surveyed	Nets Issued	Date Of Distribution	Villages	Digicel	Bmobile	Houses With Radios	Radio Networks	Comments
31	LIULIU		2,793	0											
		Liuliu	1,226	0	Panduaga SHC										Road
		Janote	809	0	Panduaga SHC										Road
		Piangoli	759	0	Panduaga SHC										Road
32	TUNDAKA		2,754	0											
		Tundaka	691	0	Panduaga SHC										Road
		Lopapi	774	0	Panduaga SHC										Road
		Hipuraipa	649	0	Panduaga SHC										Road
		Hatambe	639	0	Panduaga SHC										Road
33	YONGALE		1,913	0											
		Yongale	384	0	Panduaga SHC										8 Hr Trek
		Pamia	294	0	Panduaga SHC										8 Hr Trek
		Bipi	306	0	Panduaga SHC										8 Hr Trek
		Timani	205	0	Panduaga SHC										8 Hr Trek
		Akapu	387	0	Panduaga SHC										8 Hr Trek
		Yaneni Akapu	147	0	Panduaga SHC										8 Hr Trek
		Yaneni Kupai	189	0	Panduaga SHC										8 Hr Trek
34	MARGARIMA STATION		1,018	0											
		Margarima Station	297	0	Magarima HC										Road
		Perali	349	0	Magarima HC										Road
		Olali Yumbiraka	236	0	Magarima HC										Road
		Takipa	136	0	Magarima HC										Road
35	KEME		680	0											
		Keme	303	0	Magarima HC										Trek
		Tamulame	171	0	Magarima HC										Trek
		Hupipi	80	0	Magarima HC										Trek
		Anali	126	0	Magarima HC										Trek

HELA PROVINCE
KOROBO KOPIAGO DISTRICT POPULATION 2022
LLIN DISTRIBUTION SUMMARY SHEET

VILLAGE CODING

Areas Above 2000m
Areas Between 1600m To 2000m
Areas Between 1200m to 1600m
Areas Below 1200m

LLG	WARD	VILLAGE	Estimated 2022 Population Based On 2000 Census	Estimated 2022 Population Based On 2019 Survey	Health Centre	Population Surveyed	House Holds Surveyed	Nets Issued	Date Of Distribution	Villages	Digicel	Bmobile	Houses With Radios	Radio Networks	Comments
KOROBA \ KOPIAGO			117,288	117,288		24,642	4,697	12,398		151	127	0	3,655	129	
AWI \ PORI RURAL			30,130	28,888		3,949	769	1,622		11	0	0	356	7	
1	TI'IBA		1,891	949											
		Ti'iba	555		Pori SHC										One Day Trek
		Harobia	442		Pori SHC										One Day Trek
		Tiniga	497		Pori SHC										One Day Trek
		Tigu	398		Pori SHC										One Day Trek
2	TAPAYAMABU		1,593	971											
		Perali	600		Pori SHC										2 Hr Trek
		Mondoga	270		Pori SHC										2 Hr Trek
		Hubi	236		Pori SHC										2 Hr Trek
		Piagou	487		Pori SHC										2 Hr Trek
3	HEWANALI \ KURANDA 2		1,355	614											
		Hewanali	453		Pori SHC										3 Hr Trek
		Perabuli	329		Pori SHC										3 Hr Trek
		Titamu	573		Pori SHC										3 Hr Trek
4	KURANDA 1		1,428	851											
		Wage	285		Pori SHC										2 Hr Trek
		Titamu	529		Pori SHC										2 Hr Trek
		Wamu			Pori SHC										2 Hr Trek
		Wake	614		Pori SHC										2 Hr Trek
5	TADE 2 (WAGIA)		868	467											
		Wamu/Wagia	664		Pori SHC										Road
		Tepetepe	204		Pori SHC										Road
6	TADE 1		725	651											
		Malopa	312		Pori SHC										Road
		Pii	116		Pori SHC										Road
		Rikimu	123		Pori SHC										Road
		Tade Community chool	174		Pori SHC										Road
7	WAGALA		1,666	821											
		Hayia	523		Pori SHC										Road
		Hipa/Lake	366		Pori SHC										Road
		Minale Tindawa	224		Pori SHC										Road
		Neia Nogota	553		Pori SHC										Road
8	EGANDA		885	821											
		Eganda	169		Pori SHC										Road
		Tigareke	427		Pori SHC										Road
		Ere	290		Pori SHC										Road
9	EGAE (AYUGALI) 1		1,081	626											
		Egae (Ayugali 1)	534		Pori SHC										Road
		Wira	199		Pori SHC										Road
		Warayea	121		Pori SHC										Road
		Kopa	106		Pori SHC										Road
		Station	120		Pori SHC										Road
10	AYUGALI 2		1,295	782											
		Kupe	369		Pori SHC										Road
		Hewa	482		Pori SHC										Road
		Waga	204		Pori SHC										Road
		Tiagobo	239		Pori SHC										Road
11	WANGA PAREYA		1,465	1,093											
		Wanga	384		Pori SHC										Road
		Lane	474		Pori SHC										Road
		Hewako	366		Pori SHC										Road
		Warayetundi	241		Pori SHC										Road
12	TUGU		1,330	1,249											
		Tugu	239		Pori SHC										Road
		Wayia	251		Pori SHC										Road
		Kama	472		Pori SHC										Road
		Kenamu	367		Pori SHC										Road
13	HAMUTA		711	976											
		Hamuta	207		Pori SHC										Trek
		Salina	182		Pori SHC										Trek
		Kenamu	140		Pori SHC										Trek
		Salava Ronuga	182		Pori SHC										Trek
14	PUYANA		1,896	1,672											
		Puyana	497		Pori SHC										Road
		Puyana			Paga SHC										Road
		Hagia	571		Paga SHC										Road
		Hamuda Layabi	447		Paga SHC										Road
		Teruni	381		Paga SHC										Road
15	KEWE 1		887	1,869											
		Kewe 1	268		Paga SHC										Road
		Tade	94		Paga SHC										Road
		Pii	131		Paga SHC										Road
		Teruni	393		Paga SHC										Road
16	KEWE 2 AKIRA		828	1,342											
		Akira	339		Paga SHC										Road
		Aiyane	187		Paga SHC										Road
		Patara	72		Paga SHC										Road
		Muya	229		Paga SHC										Road

LLG	WARD	VILLAGE	Estimated 2022 Population Based On 2000 Census	Estimated 2022 Population Based On 2019 Survey	Health Centre	Population Surveyed	House Holds Surveyed	Nets Issued	Date Of Distribution	Villages	Digicel	Emobile	Houses With Radios	Radio Networks	Comments
17	HEMBE		1,490	1,175											
		Hembe	465		Paga SHC										Road
		Patara	282		Paga SHC										Road
		Teruni/Hana	288		Paga SHC										Road
		Auni Station	455		Paga SHC										Road
18	WANGA		2,492	3,420											
		Hewago/Ariamu	359		Paga SHC										Road
		Lane Urawi	659		Paga SHC										Road
		Ipilaiya	320		Paga SHC										Road
		Paga High School	1,153		Paga SHC										Road
19	PAGA		1,536	1,592											
		Horaiya/Wapiya	523		Paga SHC										Road
		Paka	620		Paga SHC										Road
		Patara	393		Paga SHC										Road
20	HAWINDA 1		1,342	1,910		1733	361	887		3	0	0	174		
		Malima	315	344	Paga SHC	264	72	144	29.05.22	1	0	0	43	NBC SHP	2 Hr Trek
		Takiapu	507	514	Paga SHC	451	89	229	29.05.22	1	0	0	44	NBC SHP	2 Hr Trek
		Angarago	519	1,052	Paga SHC	1018	200	514	29.05.22	1	0	0	87	NBC SHP	2 Hr Trek
21	HIRUPAYE		767	558											
		Hirupaye	233		Paga SHC										3 Hr Trek
		Lage	179		Paga SHC										3 Hr Trek
		Teruni	179		Paga SHC										3 Hr Trek
		Hana	177		Paga SHC										3 Hr Trek
22	YURU (HAWINDA 2)		1,008	1,355		1409	263	735		4	0	0	182		
		Yuru	401	442	Paga SHC	358	49	187	29.05.22	1	0	0	38	NBC SHP	4 Hr Trek
		Ayane	187	161	Paga SHC	258	48	132	29.06.22	1	0	0	34	NBC SHP	4 Hr Trek
		Kewa	157	349	Paga SHC	317	66	169	29.06.22	1	0	0	36	NBC SHP	4 Hr Trek
		Hirurege	263	402	Paga SHC	476	100	247	29.06.22	1	0	0	74	NBC SHP	4 Hr Trek
23	KUTAGE		620	1,866											
		Angora	185		Paga SHC										5 Hr Trek
		Hewa	108		Paga SHC										5 Hr Trek
		Puni	125		Paga SHC										5 Hr Trek
		Ere	202		Paga SHC										5 Hr Trek
24	WALUNI \ TARANE		971	1,257		807	145	0		4	0	0	0		
		Waluni/Tarane	361	400	Paga SHC	377	77			1					Tribal Fighting. Yet to distribute
		Tarane Ayene	182	255	Paga SHC					1					Abandoned
		Kundu Raliape	147	290	Paga SHC	44	10			1					Tribal Fighting. Yet to distribute
		Sindawna	282	312	Paga SHC	386	58			1					Tribal Fighting. Yet to distribute
LAKE KOPIAGO RURAL			24,499	26,842		20,693	3,928	10,776		140	127	0	3,299	122	
1	HAREDEGE		1,977	3,528		701	159	367		9	9	0	104		
		Hawiakaria	126	135	Koroba HC										Non Existant
		Topika	89	275	Koroba HC										Non Existant
		Pakabi	164	251	Koroba HC	156	37	79	17.04.22	1	1	0	32	NBC, SHP	Road -2 Hr Trek
		Kamenda	130	251	Koroba HC	67	14	33	17.04.22	1	1	0	9	NBC, SHP	Road- 4 Hr Trek
		Kapi	145	175	Koroba HC	77	15	38	17.04.22	1	1	0	7	NBC, SHP	Road -4 Hr Trek
		Waiako	76	223	Koroba HC										Included Under Haro
		Yamu	44	284	Koroba HC	76	16	39	17.04.22	1	1	0	16	NBC, SHP	Road -2 Hr Trek
		Lemanga	111	164	Koroba HC	117	26	63	17.04.22	1	1	0	15	NBC, SHP	Road -2 Hr Trek
		Tandupi	42	159	Koroba HC	39	9	22	17.04.22	1	1	0	10	NBC, SHP	Road -2 Hr Trek
		Yauapi	79	166	Koroba HC										Included Under Pakapi
		Tukapi	172	218	Koroba HC	76	21	44	17.04.22	1	1	0	7	NBC, SHP	Road -2 Hr Trek
		Haro	79	217	Koroba HC	49	11	25	17.04.22	1	1	0	7	NBC, SHP	Road -2 Hr Trek
		Hagopi	51	219	Koroba HC										Included Under Kapi
		Urapuku	138	121	Koroba HC										Non Existant
		Tamonda	49	137	Koroba HC										Included Under Tandupi
		Halungi	49	55	Koroba HC										Included Under Yamu
		Kerolo	433	479	Koroba HC	44	10	24	17.04.22	1	1	0	1	NBC SHP	Road -7 Hr Trek
2	AROU		1,514	2,159		1147	195	591		8	8	0	133		
		Arou	94	60	Koroba HC	69	10	34	16.04.22	1	1	0	10	NBC, SHP	Road - 2 Hr Trek
		Sekapere	29	44	Koroba HC	175	34	88	16.04.22	1	1	0	22	NBC, SHP	Road - 2 Hr Trek
		Yopi	67	118	Koroba HC	163	27	83	16.04.22	1	1	0	27	NBC, SHP	Road - 2 Hr Trek
		Tanaro	49	171	Koroba HC										Included Under Sekapere
		Tamonda	32	74	Koroba HC										Included Under Sekapere
		Okopura	10	74	Koroba HC										Included Under Sekapere
		Holumbou	128	96	Koroba HC										Included Under Porinda
		Kananda	34	56	Koroba HC										Included Under Akopi
		Wala	94	80	Koroba HC										Included Under Akopi
		Natapi	37	106	Koroba HC										Included Under Akopi
		Kewapi	94	53	Koroba HC										Included Under Arou
		Terepi	88	184	Koroba HC										Included Under Porinda
		Ekanda	61	52	Koroba HC										Included Under Yopi
		Ali	91	35	Koroba HC										Included Under Porinda
		Lapanda	44	52	Koroba HC										Included Under Atiapuga
		Hayakuru	133	84	Koroba HC										Included Under Atiapuga
		Porinda	40	232	Koroba HC	194	24	95	16.04.22	1	1	0	0	NBC, SHP	Road - 2 Hr Trek
		Atiapuka	71	168	Koroba HC	145	22	74	16.04.22	1	1	0	22	NBC, SHP	Road - 2 Hr Trek
		Solida	113	123	Koroba HC	122	19	62	16.04.22	1	1	0	2	NBC, SHP	Road - 2 Hr Trek
		Yalia	140	95	Koroba HC										Included Under Solida
		Akopi	52	82	Koroba HC	192	41	107	16.04.22	1	1	0	32	NBC, SHP	Road - 3 Hr Trek
		Arou Community School	12	119	Koroba HC	87	18	48	16.04.22	1	1	0	18	NBC, SHP	Road - 2 Hr Trek
3	HAGINI \ POKO		1,817	1,497		950	210	532		10	8	0	184		
		Pakalu	236	295	Kopiago HC	171	43	97	16.04.22	1	1	0	43	NBC SHP	Road/Trek
		Konakako	243	0	Kopiago HC					1					INCLUDED UNDER PAKALU
		Tapa/Harekako	138	0	Kopiago HC	171	41	96	16.04.22	1	1	0	41	NBC SHP	Trek
		Wapi	199	0	Kopiago HC					1					INCLUDED UNDER YUKARI

LLG	WARD	VILLAGE	Estimated 2022 Population Based On 2000 Census	Estimated 2022 Population Based On 2019 Survey	Health Centre	Population Surveyed	House Holds Surveyed	Nets Issued	Date Of Distribution	Villages	Digicel	Emobile	Houses With Radios	Radio Networks	Comments
		Yukari	133	346	Kopiago HC	193	40	108	16.04.22	1	1	0	27	NBC SHP	Road/Trek
		Yaliaya	49	91	Kopiago HC	37	9	20	16.04.22	1	1	0	6	NBC SHP	Road/Trek
		Hawisoko	290	76	Kopiago HC	47	11	26	16.04.22	1	1	0	2	NBC SHP	Road/Trek
		Takuteke	71	188	Kopiago HC	106	25	61	16.04.22	1	1	0	25	NBC SHP	4-5hrs Trek
		Ira-Poko	314	256	Kopiago HC	149	25	81	16.04.22	1	1	0	25	NBC SHP	4-5hrs Trek
		Ukuwakalo	98	119	Kopiago HC	76	16	43	16.04.22	1	1	0	15	NBC SHP	4-5hrs Trek
		Alupa Teke	47	125	Kopiago HC										Included Under Ukuwakalo
4	HORALE \ KARUKA		1,067	798		623	137	331		7	6	0	109		
		Keloteke	30	126	Kopiago HC	99	21	51	16.04.22	1	1	0	19	NBC SHP	Two Day Trek
		Tagalo	105	187	Kopiago HC	111	25	58	16.04.22	1	1	0	18	NBC SHP	Two Day Trek
		Yeria Teke	103	149	Kopiago HC	109	27	58	16.04.22	1	1	0	17	NBC SHP	Two Day Trek
		Wanomaia Mei	22	0	Kopiago HC										Non Existant
		Yawi Kaki	162	0	Kopiago HC	158	33	85	16.04.22	1	1	0	25	NBC SHP	Two Day Trek
		Toei	15	0	Kopiago HC										Non Existant
		Bokolia	158	0	Kopiago HC					1					Included Under Yawikaki
		Kuyarada Kako	111	276	Kopiago HC	70	16	38	16.04.22	1	1	0	16	NBC SHP	Two Day Trek
		Heraniro	34	0	Kopiago HC										Non Existant
		Wapi Kambe	49	0	Kopiago HC										Non Existant
		Waku	71	0	Kopiago HC										Non Existant
		Kadele Teke	207	60	Kopiago HC	76	15	41	16.04.22	1	1	0	14	NBC SHP	Two Day Trek
5	ALUNI		990	838		719	140	372		8	8	0	104		
		Aluni	135	160	Kopiago HC	90	20	45	16.04.22	1	1	0	16	NBC SHP	Three Day Trek
		Tangi Teke	133	115	Kopiago HC	111	21	56	16.04.22	1	1	0	16	NBC SHP	Three Day Trek
		Kiki Teke	115	70	Kopiago HC	115	21	57	16.04.22	1	1	0	13	NBC SHP	Three Day Trek
		Kalowaya	78	114	Kopiago HC	79	15	43	16.04.22	1	1	0	10	NBC SHP	Three Day Trek
		Naya	44	114	Kopiago HC	89	15	47	16.04.22	1	1	0	11	NBC SHP	Three Day Trek
		Harupa	49	0	Kopiago HC										Non Existant
		Haiawi	172	84	Kopiago HC	69	14	37	16.04.22	1	1	0	11	NBC SHP	Three Day Trek
		Pali Kambe	131	80	Kopiago HC	61	13	34	16.04.22	1	1	0	12	NBC SHP	Three Day Trek
		Haku	52	102	Kopiago HC	105	21	53	16.04.22	1	1	0	15	NBC SHP	Three Day Trek
		Yagoane	81	0	Kopiago HC										Three Day Trek
6	AGALI \ BULAKO		794	593		523	109	300		6	6	0	0		Air
		Yeru	236	164	Agali AP	111	20	62	25.07.22	1	1	0	0		Air
		Bulako	133	113	Agali AP	109	24	60	26.07.22	1	1	0	0		3-4 Hr Trek
		Makali Kako	158	228	Agali AP	69	12	39	25.07.22	1	1	0	0		3-4 Hr Trek
		Pikinda	110	33	Agali AP	54	10	32	25.07.22	1	1	0	0		3-4 Hr Trek
		Pongaia	121	55	Agali AP	42	9	24	26.07.22	1	1	0	0		3-4 Hr Trek
		Ecpng Mission	35	0	Agali AP	138	34	83	25.07.22	1	1	0	0		Air
7	HIRANE \ BARAE		1,829	2,168		1595	302	860		19	8	0	265		
		Kalisda	172	307	Kopiago HC	365	70	193	19.04.22	1	1	0	70	NBC SHP	One Day Trek
		Batiaku	29	307	Kopiago HC	218	34	116	19.04.22	1	1	0	31	NBC SHP	One Day Trek
		Kuluwa Kana	234	311	Kopiago HC	199	39	115	19.04.22	1	1	0	39	NBC SHP	One Day Trek
		Paua Teke	46	0	Kopiago HC					1					Included Under Batiaku
		Surumagua	138	0	Kopiago HC					1					Included Under Tekapi
		Tale Kako	51	0	Kopiago HC					1					Non Existant
		Saia Purunda	142	0	Kopiago HC					1					Non Existant
		Parina	27	0	Kopiago HC					1					Non Existant
		Tiki Teke	138	0	Kopiago HC					1					Non Existant
		Polia Teke	42	0	Kopiago HC					1					Included Under Awi Sola
		Awisola	153	295	Kopiago HC	232	50	130	19.04.22	1	1	0	50	NBC SHP	One Day Trek
		Anu Iripi	137	266	Kopiago HC	207	39	111	19.04.22	1	1	0	38	NBC SHP	One Day Trek
		Lepi	93	0	Kopiago HC					1					Included Under Bele
		Walepi	49	0	Kopiago HC					1					Included Under Okopura
		Okopura	67	156	Kopiago HC	151	26	77	19.04.22	1	1	0	10	NBC SHP	One Day Trek
		Papa	44	0	Kopiago HC					1					Included Under Okopura
		Bele	29	108	Kopiago HC	157	27	84	19.04.22	1	1	0	10	NBC SHP	One Day Trek
		Kakapi	29	0	Kopiago HC					1					Included Under Bele
		Tekapi	157	417	Kopiago HC	66	17	34	19.04.22	1	1	0	17	NBC SHP	One Day Trek
		Apostolic Mission	54	0	Kopiago HC										Included Under Kuluwa Kako
8	AIYUKUNI		1,401	1,006		1103	213	584		11	5	0	202		
		Kopi Hiyanda	214	0	Kopiago HC										Included Under Aiyukuni SDA Mission
		Ayuka Kana	47	121	Kopiago HC	169	33	87	19.04.22	1	1	0	33	NBC SHP	Road/Trek
		Teriada	96	0	Kopiago HC					1					Included Under Kop Hiyanda
		Tolo	44	0	Kopiago HC					1					Included Under Piki Teke
		Piki Teke	66	111	Kopiago HC	169	38	85	19.04.22	1	1	0	30	NBC SHP	Road/Trek
		Luinda	56	184	Kopiago HC	172	33	95	19.04.22	1	1	0	32	NBC SHP	Road/Trek
		Pelao Teke	177	0	Kopiago HC					1					Included Under Wapia Etopi
		Wapia Etopi	98	283	Kopiago HC	254	40	134	19.04.22	1	1	0	39	NBC SHP	Road/Trek
		Aiyukuni C/Mission	297	0	Kopiago HC					1					Included Under Aiyukuni SDA Mission
		Kakuane C/Mission	93	0	Kopiago HC					1					Included Under Luinda
		Aiyukuni Sda Mission	115	308	Kopiago HC	339	69	183	19.04.22	1	1	0	68	NBC SHP	Road/Trek
		Kakuane Caf Mission	99	0	Kopiago HC					1					Included Under Luinda
9	KOPIAGO STATION		597	721		490	117	260		1	1	0	67		
		Kopiago Station	597	721	Kopiago HC	490	117	260	19.04.22	1	1	0	67	NBC SHP	Road
10	SUWAKA \ LANE		1,519	1,937		1544	288	833		17	10	0	259		
		Lane	182	0	Kopiago HC					1					Included Under Kunake Kana
		Kurake Kana	184	266	Kopiago HC	121	24	62	12.04.22	1	1	0	10	NBC SHP	Road/Trek
		Suwaka	165	221	Kopiago HC	127	27	67	12.04.22	1	1	0	25	NBC SHP	Road/Trek
		Sukayu Piri	61	117	Kopiago HC	88	17	44	12.04.22	1	1	0	17	NBC SHP	Road/Trek
		Kirapo	66	0	Kopiago HC					1					Included Under Kirapo CAF Mission
		Yukuada	46	133	Kopiago HC	106	20	58	12.04.22	1	1	0	20	NBC SHP	Road/Trek
		Makaiada	103	0	Kopiago HC					1					Included Under Tigu Kana
		Tigu Kana	98	347	Kopiago HC	379	63	195	12.04.22	1	1	0	54	NBC SHP	Road/Trek
		Ali Yawale	179	181	Kopiago HC	82	18	43	12.04.22	1	1	0	16	NBC SHP	Road/Trek

LLG	WARD	VILLAGE	Estimated 2022 Population Based On 2000 Census	Estimated 2022 Population Based On 2019 Survey	Health Centre	Population Surveyed	House Holds Surveyed	Nets Issued	Date Of Distribution	Villages	Digicel	Emobile	Houses With Radios	Radio Networks	Comments
		Ali Mandi	83	0	Kopiago HC					1					Included Under Tigu Kana
		Kali Kana	120	153	Kopiago HC	171	29	88	12.04.22	1	1	0	27	NBC SHP	Road/Trek
		Ali Ambuale	49	0	Kopiago HC					1					Included Under Hadeke Kana
		Hadeke Kana	29	171	Kopiago HC	156	31	90	12.04.22	1	1	0	31	NBC SHP	Road/Trek
		Pirilipi	78	0	Kopiago HC					1					Included Under Kopiago HC
		Lane Sda Mission	25	0	Kopiago HC					1					Included Under Kali Kana
		Kopiago H.c	25	171	Kopiago HC	155	27	98	12.04.22	1	1	0	27	NBC SHP	Road/Trek
		Kirapo Caf Mission	29	176	Kopiago HC	159	32	88	12.04.22	1	1	0	32	NBC SHP	Road/Trek
11	DOLOWA \ HUKINI		1,424	1,111		980	188	502		10	5	0	800		
		Waniake	287	166	Kopiago HC	164	28	86	16.04.22	1	1	0	27	NBC SHP	2 Hr Trek
		Dolowa	217	438	Kopiago HC	355	71	171	12.04.22	1	1	0	686	NBC SHP	2 Hr Trek
		Poko Kana	162	0	Kopiago HC					1					Included Under Waniake
		Bisamu	223	254	Kopiago HC	270	50	141	19.04.22	1	1	0	49	NBC SHP	2 Hr Trek
		Tapia	105	0	Kopiago HC					1					Included Under Weima Teke
		Kalo Kana	39	0	Kopiago HC					1					Included Under Dolowa
		Weima Teke	35	106	Kopiago HC	147	30	79	12.04.22	1	1	0	29	NBC SHP	2 Hr Trek
		Kelapo	142	0	Kopiago HC					1					Included Under Dolowa
		Kale Kuru	61	147	Kopiago HC	44	9	25	12.04.22	1	1	0	9	NBC SHP	2 Hr Trek
		Bekao	155	0	Kopiago HC					1					Included Under Waniake
12	DILINI \ PIRI		1,475	2,560		2498	535	1323		11	8	0	368		
		Dilini	207	0	Kopiago HC					1					Trek
		Hako Kana	137	301	Kopiago HC	192	45	105	12.04.22	1	1	0	43	NBC SHP	Trek
		Sindaua Kana	83	0	Kopiago HC					1					Included Under Hako Kana
		Wapaya	148	0	Kopiago HC					1					Included Under Tiri Kane
		Tiri Kane	64	323	Kopiago HC	272	50	144	12.04.22	1	1	0	48	NBC SHP	Trek
		Kukiya	59	306	Kopiago HC	412	96	203	12.04.22	1	1	0	85	NBC SHP	Trek
		Konanenda	244	251	Kopiago HC	244	48	124	12.04.22	1	1	0	19	NBC SHP	Trek
		Piwa	150	396	Kopiago HC	467	99	250	12.04.22	1	1	0	80	NBC SHP	Trek
		Pare Kambe	64	311	Kopiago HC	166	42	93	12.04.22	1	1	0	36	NBC SHP	Trek
		Piri	212	366	Kopiago HC	302	69	165	12.04.22	1	1	0	27	NBC SHP	Trek
		Dilini Luth. Mission	106	307	Kopiago HC	443	86	239	12.04.22	1	1	0	30	NBC SHP	Trek
13	PERAKOIA \ BATANE		1,494	1,446		1588	308	831		16	7	0	242		
		Yela	126	0	Kopiago HC					1					Included Under Taiako
		Hare Kera	32	0	Kopiago HC					1					Included Under Kalepi Puku
		Kalepi Puku	62	263	Kopiago HC	311	50	159	12.04.22	1	1	0	29	NBC SHP	5 Hr Trek
		Pindi Teke	59	256	Kopiago HC	189	37	102	12.04.22	1	1	0	33	NBC SHP	5 Hr Trek
		Kia Kana	98	0	Kopiago HC					1					Included Under Kuki Kana
		Kuki Kana	71	223	Kopiago HC	167	43	96	12.04.22	1	1	0	39	NBC SHP	5 Hr Trek
		Kaloma Teke	61	207	Kopiago HC	162	39	91	16.04.22	1	1	0	35	NBC SHP	5 Hr Trek
		Yakano	52	0	Kopiago HC	182	37	88	16.04.22	1	1	0	37	NBC SHP	5 Hr Trek
		Tedele	74	232	Kopiago HC	90	17	48	16.04.22	1	1	0	17	NBC SHP	5 Hr Trek
		Sukayu	137	0	Kopiago HC					1					5 Hr Trek
		Taiako	165	78	Kopiago HC	309	50	156	12.04.22	1		0	18	NBC SHP	5 Hr Trek
		Hamunda	69	0	Kopiago HC					1					Included Under Taiako
		Sipalia	64	186	Kopiago HC	178	35	91	16.04.22	1	1	0	34	NBC SHP	5 Hr Trek
		Halopi	78	0	Kopiago HC					1					Included Under Sipalia
		Wapia	56	0	Kopiago HC					1					Included Under Tedele
		Yalupa	290	0	Kopiago HC					1					Included Under Sipalia
14	WAKIA \ PONGOLIA		1,352	1,224		930	142	448		3	3	0	126		
		Wagiye	593	391	Koroba HC	181	29	89	16.04.22	1	1	0	59	NBC, SHP	4Hrs Trek
		Kulikuli	140	128	Koroba HC	314	50	153	16.04.22	1	1	0	26	NBC, SHP	4Hrs Trek
		Pongolaia	619	704	Koroba HC	435	63	206	16.04.22	1	1	0	41	NBC, SHP	4Hrs Trek
15	USAI \ MALIELI		1,581	1,743		1182	183	582	0	0	10	0	0		
		Malieli	231	298	Wanikipa HC	203	28	100	29.07.22	1	1	0	0	NBC SHP	2-3 DayTrek
		Usai	128	109	Wanikipa HC	95	12	46	29.07.22	1	1	0	0	NBC SHP	2-3 DayTrek
		Lipalipa 1	59	85	Wanikipa HC	72	16	35	29.07.22	1	1	0	0	NBC SHP	2-3 DayTrek
		Lipalipa 2	83	268	Wanikipa HC	103	18	50	29.07.22	1	1	0	0	NBC SHP	2-3 DayTrek
		Pawalip	56	283	Wanikipa HC	116	18	57	29.07.22	1	1	0	0	NBC SHP	2-3 DayTrek
		Weswaia	201	76	Wanikipa HC	95	13	47	29.07.22	1	1	0	0	NBC SHP	2-3 DayTrek
		Yana	101	144	Wanikipa HC	122	16	60	29.07.22	1	1	0	0	NBC SHP	2-3 DayTrek
		Waip Yana	243	134	Wanikipa HC	68	14	34	29.07.22	1	1	0	0	NBC SHP	2-3 DayTrek
		Tali	268	78	Wanikipa HC	160	27	81	29.07.22	1	1	0	0	NBC SHP	2-3 DayTrek
		Kenalipa	212	268	Wanikipa HC	148	21	72	29.07.22	1	1	0	0	NBC SHP	2-3 DayTrek
16	WISKI \ ARINI		794	688		713	132	355	0	0	6	0	35		
		Yakatone	121	126	Wanikipa HC	128	23	66	29.07.22	1	1	0	6	NBC SHP	1-2 Day Trek
		Wiski	64	98	Wanikipa HC	114	21	56	29.07.22	1	1	0	5	NBC SHP	1-2 Day Trek
		Arini	290	219	Wanikipa HC	237	43	114	29.07.22	1	1	0	5	NBC SHP	1-2 Day Trek
		Ijureke	13	50	Wanikipa HC	51	11	27	29.07.22	1	1	0	5	NBC SHP	1-2 Day Trek
		Papapuk	128	91	Wanikipa HC	85	16	42	29.07.22	1	1	0	5	NBC SHP	1-2 Day Trek
		Wiski Aid Post	177	104	Wanikipa HC	98	18	50	29.07.22	1	1	0	9	NBC SHP	1-2 Day Trek
17	WANIKIPA		1,371	1,580		1973	326	977	0	0	11	0	151		
		Wara Walu		102	Wanikipa HC	156	35	76	29.07.22	1	1	0	5	NBC SHP	1-3 Hr Trek
		Wisipa 2		67	Wanikipa HC	110	14	56	29.07.22	1	1	0	13	NBC SHP	1-3 Hr Trek
		Alunu	96	64	Wanikipa HC	97	14	48	01.08.22	1	1	0	14	NBC SHP	1-3 Hr Trek
		Wanikipa	153	210	Wanikipa HC	199	36	97	29.07.22	1	1	0	0	NBC SHP	Airfield
		Puluni	251	176	Wanikipa HC	325	67	164	29.07.22	1	1	0	15	NBC SHP	1-3 Hr Trek
		Sakurapi	94	130	Wanikipa HC	97	14	48	01.08.22	1	1	0	14	NBC SHP	1-3 Hr Trek
		Tuki	214	103	Wanikipa HC	126	21	63	29.07.22	1	1	0	7	NBC SHP	1-3 Hr Trek
		Wisipa	120	140	Wanikipa HC	187	24	92	29.07.22	1	1	0	8	NBC SHP	1-3 Hr Trek
		Wara Nene	155	167	Wanikipa HC	216	50	107	29.07.22	1	1	0	50	NBC SHP	1-3 Hr Trek
		Wane 1	148	242	Wanikipa HC	185	25	91	29.07.22	1	1	0	9	NBC SHP	1-3 Hr Trek
		Wane 2	138	178	Wanikipa HC	275	26	135	29.07.22	1	1	0	16	NBC SHP	1-3 Hr Trek
18	AMBI \ WAIKI		1,092	797		929	144	456	0	0	6	0	51		
		Hiyali 1 & 2	206	88	Wanikipa HC										NO PEOPLE LIVING HERE
		Waiki	99	156	Wanikipa HC	372	50	181	31.07.22	1	1	0	17	NBC SHP	2 Day Trek
		Ambi	185	119	Wanikipa HC	159	25	78	31.07.22	1	1	0	4	NBC SHP	2 Day Trek

LLG	WARD	VILLAGE	Estimated 2022 Population Based On 2000 Census	Estimated 2022 Population Based On 2019 Survey	Health Centre	Population Surveyed	House Holds Surveyed	Nets Issued	Date Of Distribution	Villages	Digicel	E-mobile	Houses With Radios	Radio Networks	Comments
		Aipaka	162	64	Wanikipa HC	73	11	35	31.07.22		1	0	4	NBC SHP	2 Day Trek
		Galaka	157	112	Wanikipa HC	80	13	40	31.07.22		1	0	6	NBC SHP	2 Day Trek
		Puali	94	87	Wanikipa HC	48	10	25	31.07.22		1	0	3	NBC SHP	2 Day Trek
		Yoliape	189	170	Wanikipa HC	197	35	97	31.07.22		1	0	17	NBC SHP	2 Day Trek
19	YOKONA		411	449		505	100	272		4	2	0	99		
		Yokona	56	220	Kopiago HC	271	50	147	19.04.22	1	1	0	49	NBC SHP	1-2 Day Trek
		Yumonda	125	0	Kopiago HC					1					Included Under Yokona
		Kariapuka	93	0	Kopiago HC					1					Included Under Kuli
		Kuli	138	229	Kopiago HC	234	50	125	19.04.22	1	1	0	50	NBC SHP	1-2 Day Trek
			0	0											
NORTH KOROBA RURAL			27,726	24,882		0	0	0	0		0	0	0	0	
1	KELABO 1		759	826											
		Wanga	317		Kelabo SHC										Road
		Homaiya	182		Kelabo SHC										Road
		Aniye	260		Kelabo SHC										Road
2	KELABO 2		1,089	736											
		Yupina	344		Kelabo SHC										Road
		Anopaya	241		Kelabo SHC										Road
		Irane	504		Kelabo SHC										Road
3	KUDJEBI		1,043	664											
		Andaya	359		Kelabo SHC										Road
		Homaya	534		Kelabo SHC										Road
		Wiria	150		Kelabo SHC										Road
4	HAWIANDA		502	621											
		Okali	148		Kelabo SHC										Road
		Hiniya	354		Kelabo SHC										Road
5	AIENDA		870	849											
		Yandike	376		Kelabo SHC										Road
		Ayene	494		Kelabo SHC										Road
6	KAGOMA		1,261	1,222											
		Puyana	824		Kagoma SHC										Road
		Hitana	437		Kagoma SHC										Road
7	WALUKUMU		1,033	706											
		Hukuni	447		Kagoma SHC										Road
		Kunia	482		Kagoma SHC										Road
		Walali	105		Kagoma SHC										Road
8	KENAMU		718	1,065											
		Taliwa	421		Kagoma SHC										Road
		Talewa	297		Kagoma SHC										Road
9	PIANGONGA 2		722	700											
		Muka	668		Kagoma SHC										Trek
		Tilaya	54		Kagoma SHC										Trek
10	PIANGONGA 1		995	1,268											
		Kopera	489		Kagoma SHC										Trek
		Neni	276		Kagoma SHC										Trek
		None	229		Kagoma SHC										Trek
11	YAKUABI		1,349	1,484											
		Napiria	293		Kagoma SHC										Trek
		Kuakua	438		Kagoma SHC										Trek
		Perapoya	617		Kagoma SHC										Trek
12	LEVANI		1,489	1,393											
		Tapero	499		Kagoma SHC										Trek
		Muka	421		Kagoma SHC										Trek
		Hitana	491		Kagoma SHC										Trek
		Hukuni	78		Kagoma SHC										Trek
13	BETEGE 2		814	486											
		Tolo	270		Koroba HC										Road
		Kanimu	308		Koroba HC										Road
		Neneke	236		Koroba HC										Road
14	EREIBA 2		1,195	1,082											
		Kengi	258		Koroba HC										Road
		Koma	83		Koroba HC										Road
		Tiliya	312		Koroba HC										Road
		Wake	108		Koroba HC										Road
		Karua	435		Koroba HC										Road
15	EREIBA 1		813	558											
		Karua	813		Koroba HC										Road
16	KERENEIBA		2,340	1,177											
		Kanimu	1,086		Koroba HC										Road
		Aba	497		Koroba HC										Road
		Pina	757		Koroba HC										Road
17	BETEGE 1		931	1,183											
		Wakiria	319		Koroba HC										Road
		Pina	233		Koroba HC										Road
		Hemo	165		Koroba HC										Road
		Neneke	214		Koroba HC										Road
18	HYJENOMA 2		1,049	987											
		Tunuka	625		Koroba HC										Road
		Tokomu	255		Koroba HC										Road
		Pari	169		Koroba HC										Road
19	HYJENOMA 1		689	951											
		Mora	258		Koroba HC										Road
		Tiwini	131		Koroba HC										Road
		Wake	98		Koroba HC										Road
		Pari	202		Koroba HC										Road
20	TERIA 2		1,455	1,405											

LLG	WARD	VILLAGE	Estimated 2022 Population Based On 2000 Census	Estimated 2022 Population Based On 2019 Survey	Health Centre	Population Surveyed	House Holds Surveyed	Nets Issued	Date Of Distribution	Villages	Digicel	Emobile	Houses With Radios	Radio Networks	Comments
		Iroke	437		Koroba HC										Road
		Karua	627		Koroba HC										Road
		Kanimu	59		Koroba HC										Road
		Lape	71		Koroba HC										Road
		Kepeni	261		Koroba HC										Road
21	TERIA 1		1,215	1,088											
		Kokoma	207		Koroba HC										Road
		Perapuli	421		Koroba HC										Road
		Puyamu	35		Koroba HC										Road
		Mapili	551		Koroba HC										Road
22	YATEMALI		1,792	1,995											
		Yugu	421		Koroba HC										Road
		Humuya	118		Koroba HC										Road
		Awii	698		Koroba HC										Road
		Pari	228		Koroba HC										Road
		Wanga	142		Koroba HC										Road
		Hagu	140		Koroba HC										Road
		Koma	46		Koroba HC										Road
23	IALUBA 1		946	1,024											
		Koma	781		Koroba HC										Road
		Pina	111		Koroba HC										Road
		Wita	54		Koroba HC										Road
24	IALUBA 2		1,000	585											
		Koma	474		Koroba HC										Road
		Tobani	373		Koroba HC										Road
		Tukupu	153		Koroba HC										Road
25	UMIMI		1,659	826											
		Gombi	273		Koroba HC										Do with North Fly
		Tobi	78		Koroba HC										Do with North Fly
		Umimi	72		Koroba HC										Do with North Fly
		Tinahai	120		Koroba HC										Do with North Fly
		Siambi	40		Koroba HC										Do with North Fly
		Sesenabi	401		Koroba HC										Do with North Fly
		Edero	182		Koroba HC										Do with North Fly
		Okabi	492		Koroba HC										Do with North Fly
			0												
SOUTH KOROBA RURAL			34,933	36,676		0	0	0			0	0	0	0	
1	MAGARA 1		1,575	1,146											
		Homa	627	0	Koroba HC										Road/ Day Trek
		Pela	408		Koroba HC										Road/ Day Trek
		Minipa	110		Koroba HC										Road/ Day Trek
		Tagabua	430		Koroba HC										Road/ Day Trek
2	EREBO		1,365	1,596											
		Tebe	329		Koroba HC										Road/ Day Trek
		Wayali	143		Koroba HC										Road/ Day Trek
		Hariya	470		Koroba HC										Road/ Day Trek
		Maka	118		Koroba HC										Road/ Day Trek
		Taka	54		Koroba HC										Road/ Day Trek
		Tobe	96		Koroba HC										Road/ Day Trek
		Kane	155		Koroba HC										Road/ Day Trek
3	MAGARA 3		1,866	1,920											
		Taralipa	292		Koroba HC										Road/ Day Trek
		Howa	339		Koroba HC										Road/ Day Trek
		Ukali	255		Koroba HC										Road/ Day Trek
		Janga	238		Koroba HC										Road/ Day Trek
		Nogeia	357		Koroba HC										Road/ Day Trek
		L/Hayapi Topup School	386		Koroba HC										Road/ Day Trek
4	HEDEMARI 1		1,507	2,470											
		Tura	617		Koroba HC										Road
		Lai	212		Koroba HC										Road
		Poke	303		Koroba HC										Road
		Hirua	110		Koroba HC										Road
		Tolaya	150		Koroba HC										Road
		Piakota	29		Koroba HC										Road
		Naro	86		Koroba HC										Road
5	HEDEMARI 2		824	788											
		Piagota	137		Koroba HC										Road/Trek
		Tura	253		Koroba HC										Road/Trek
		Hirua	126		Koroba HC										Road/Trek
		Naro	120		Koroba HC										Road/Trek
		Poke	62		Koroba HC										Road/Trek
		Tolaya	42		Koroba HC										Road/Trek
		Wandu	84		Koroba HC										Road/Trek
6	HUMBURU 1		1,890	2,549											
		Humburu	577		Koroba HC										Road/Trek
		Huku	541		Koroba HC										Road/Trek
		Ate	472		Koroba HC										Road/Trek
		Kaya	300		Koroba HC										Road/Trek
7	HUMBURU 2		432	1,198											
		Kuti Ibu	94		Koroba HC										Road/Trek
		Kuti Meria	64		Koroba HC										Road/Trek
		Kuti Mangobe	79		Koroba HC										Road/Trek
		Kuti Nde	76		Koroba HC										Road/Trek
		Kuti Lero	118		Koroba HC										Road/Trek
8	KAKARENE 1		1,746	1,689											
		Honaga	1,746		Koroba HC										Road/Trek

LLG	WARD	VILLAGE	Estimated 2022 Population Based On 2000 Census	Estimated 2022 Population Based On 2019 Survey	Health Centre	Population Surveyed	House Holds Surveyed	Nets Issued	Date Of Distribution	Villages	Digicel	Brmobile	Houses With Radios	Radio Networks	Comments
9	KAKARENE 2		1,497	2,077											
		Kakarene	1,497		Koroba HC										Road/Trek
10	GUNU 1		1,224	924											
		Gunu 1	1,224		Koroba HC										Road/Trek
11	GUNU 2		1,352	792											
		Gunu 2	1,352		Koroba HC										Road/Trek
12	PANDU		1,210	1,418											
		Pandu	1,210		Koroba HC										Road/1 Day Trek
13	MARIA		2,183	3,374											
		Maria	2,183		Koroba HC										Road/Trek
14	ANDIRIA 1		1,323	887											
		Andiria	1,323		Koroba HC										Road/Trek
15	KOROBA STATION		642	678											
		Koroba Station	642		Koroba HC										Road
16	ANDIRIA 2		1,177	1,132											
		Kopia	169		Koroba HC										Road
		Lero	88		Koroba HC										Road
		Ewanali	261		Koroba HC										Road
		Kewa	467		Koroba HC										Road
		Andiria	192		Koroba HC										Road
17	KUNDUGU		1,900	1,630											
		Kundugu	1,900		Koroba HC										Road
18	TANGIMAPU		2,016	1,212											
		Tangimapu	2,016		Koroba HC										1 Day Trek
19	TUMBITE		2,465	2,002											
		Tumbite	2,465		Koroba HC										Road
20	PAPULUMI 1		1,521	2,334											
		Aguma	297		Koroba HC										Road/Trek
		Kayalu	158		Koroba HC										Road/Trek
		Haku	192		Koroba HC										Road/Trek
		Kopiya	577		Koroba HC										Road/Trek
		Arua	147		Koroba HC										Road/Trek
		Tuyaka	150		Koroba HC										Road/Trek
21	EGELE 1		1,522	316											
		Pi	561		Koroba HC										Road
		Ipipi	165		Koroba HC										Road
		Tayanda	432		Koroba HC										Road
		Hora	364		Koroba HC										Road
22	EGELE 2		1,630	2,201											
		Huri	501		Koroba HC										Road/Trek
		Homa	317		Koroba HC										Road/Trek
		Emapu	172		Koroba HC										Road/Trek
		Hiriwaka	118		Koroba HC										Road/Trek
		Pi	120		Koroba HC										Road/Trek
		Karua	403		Koroba HC										Road/Trek
23	MBULI		2,065	2,343											
		Mbuli	2,065		Koroba HC										Road