

ROTARIANS AGAINST MALARIA



LONG LASTING INSECTICIDAL NET DISTRIBUTION REPORT

WESTERN PROVINCE North Fly and South Fly Districts

Carried Out In Conjunction With The Provincial Government And Church
Health Services Of Western Province

With Support From The Global Fund

1st February to 28th March 2022



Table of Contents

Executive Summary	3
Background.....	4
Schedule	6
Methodology.....	7
Results	11
Conclusions.....	12
Acknowledgements	14
Appendix One – History Of LLIN Distribution In PNG	14
Appendix Two – Malaria In Western Province Compared With Other Provinces	19
Appendix Three - Malaria By Altitude	21
Appendix Four – Other Photographs	22

Annex One	Detailed Distribution Data For North Fly District
Annex Two	Detailed Distribution Data For South Fly District

Executive Summary

Western Province is a coastal province on the south coast of mainland of Papua New Guinea (PNG). It is a very low lying district, much of which is swamp land, and is bisected by the Fly and Strickland Rivers. (90% of the population live in altitudes below 400m with a further 8% living below 800m. For practical purposes the whole population of Western Province live in malaria areas with the exception of a very few people who live high in the mountains where malaria is likely to be absent.

The family level survey and distribution of Long-Lasting Insecticidal Nets (LLINs) was carried out in North Fly and South Fly between 1st February and 28th March 2022. This program was supposed to occur at the end of 2021 but was postponed to 2022 due to high levels of Covid being reported in Western Province in 2021.

Table One shows the estimated population to be covered by the program together with the actual population found along with the number of LLINs distributed by district. In total, 92,773 LLINs were distributed to a population of 183,454 people. This resulted in distribution of 51 nets for every 100 people in the province.

TABLE ONE – Population And Nets Distributed

District	Population from 2000 Census	Population Of Targeted Areas In 2018	Total Estimated Population 2022	Population Surveyed 2022	House Holds Surveyed 2022	Nets Issued 2022	Nets Per 100 People
South Fly	46,537	77,788	85,746	83,930	13,584	42,364	50
North Fly	51,479	95,302	105,052	99,524	16,578	50,409	51
Totals	98,016	173,090	190,798	183,454	30,162	92,773	51

A further 299 LLINs were donated to health centres as nets were surplus to requirement, were no longer in bales and in most cases could not be easily returned to a central location. These nets would be distributed to pregnant mothers and for use over hospital beds where needed.

The overall operational cost of the programme was 514,762.69 Kina (Approximately US\$ 147,045) resulting in a cost of about 5.55 Kina or US\$1.59 per net delivered. This was about 10.0% over the anticipated budget. While there were saving in Human Resources there were big overspends in boat costs, particularly getting the nets by barges to health centres in South Fly and having to use helicopters in North Fly as airstrips in many places are not serviceable. However, overall, considering the conditions, the price was reasonable for the work done.

Overall, the distribution went well in Western Province with excellent collaboration from provincial and district health authorities which resulted in all targeted communities being reached and all household receiving nets.

Feedback from partners and communities suggest they were happy with the methodology used as the process appeared transparent to all concerned. However, as always, there were a few families who complained that they did not receive enough nets but for the most part it is believed that this was a result of families not fully understanding the allocation system used.

Global Fund and PNG Sustainable Development Program (SDP) Limited supplied and donated all the nets for Western Province while the distribution costs were covered by PNG SDP. The nets distributed in Western Province are different from those in the past and are known as Yahe LLINs and RAM hopes that these are better quality LLINs than those distributed in the last few years.

The history of LLIN distribution in PNG and Western Province is discussed in Appendix One and the malaria situation and stratification of malaria in Western Province are discussed in Appendix Two and Appendix Three. Historically it can be said that LLINs have had a tremendous impact on malaria in Papua New Guinea but recent distributions in lower lying provinces have not resulted in decreased malaria but we hope they are sufficient to keep malaria at bay in these areas for another three years.



Fig.1 – Initial Meetings With PHA In Daru (Left) And DHA In Kiunga (Right)

Background

Rotarians Against Malaria (RAM) is a nationally based organisation which was formed in 1997 by the Port Moresby Rotary Club in recognition of the tremendous burden that malaria imposes on the people of PNG.

RAM has an organizational mandate to work in malaria control and the distribution of LLINs in Papua New Guinea and has been working for many years with the National Department of Health (NDOH) and other partners including multilateral and bilateral agencies such as UNICEF and WHO (World Health Organisation), NGOs and church groups. (See Appendix One for full history of LLIN Distribution)

Since 2010, RAM has been coordinating the distribution of nets to all districts and provinces on a three-year recurrent cycle. This effectively means that RAM visits every village in PNG every three years. RAM has been funded by the Global Fund since 2009 and from 2017 to 2020 also from Against Malaria Foundation (AMF) which supplied PNG with the majority of its nets in 2017 and from 2018 onwards to all areas below 1600m only where most of the malaria transmission can be found. During the period 2017 to 2020, the Global Fund resources were therefore mainly used to fund the LLIN distribution costs and other relevant administration costs. However, in 2020, PNG has been lucky to receive a donation of net from the Chinese Government and these were used for all areas between 1600-2000m of altitude. It should also be noted that since 2015, the National Malaria Control Program no longer distributes nets in areas above 2000m as these are now considered too cold for malaria transmission to occur. The situation has changed in 2021. AMF no longer is a donor to PNG and all costs have now reverted to Global Fund. With this change, RAM will have difficulties covering areas from 1600-2000m but we are very fortunate in that the Global Fund allowed saving from 2020 to be used to procure nets for 2021 for this altitude. At present, the situation for this altitude of 1600-2000 remains tenuous for 2022 and 2023.

Generally, LLINs have been distributed to household level throughout the country but when shortage of funds occurred, different strategies of distribution have been used as mentioned above.

PNG can be roughly divided into five epidemiological zones.

- a) Areas which lie above 2000m in altitude which no longer receive LLINs as malaria transmission is not considered likely at these altitudes.
- b) Low lying areas of the country up to 1200m which have stable malaria endemicity and often have poor access to health continue to have household distributions.
- c) Areas from 1200 to 1600m which are generally considered to be of low transmission potential but traditionally have had occasional malaria epidemics due to poor immunity and changing weather conditions. LLIN distribution continue in these settings.
- d) Highlands regions between 1600 to 2000m in altitude such as Mount Hagen which have low malaria endemicity and generally easy access to health services. These are low priority areas and when funding is not available are left out. However, to date, these areas have been covered. From 2015 to 2016, these areas received nets for Under Five children only, and since 2017, to date, RAM has managed to find alternative sources to cover these areas. For example, in 2020, nets for these areas have been sourced from the Chinese Government and in other areas from the Global Fund. Fortunately, there was sufficient funds to cover these areas in 2021. Sadly, from 2022 there are no funds to cover these areas.
- e) In urban and peri-urban areas such as Port Moresby which are low lying areas with easy access to health, nets will not be distributed during funding constraints. Nets to these areas will be supplied through the private sector. Similarly, due to funding constraints in 2015, Lae City had Under Five Campaign LLINs only.



Fig.2 – Initial Microplanning Meetings In Mabudawan HC (Left) And Rumginae Hospital (Right)

As a result of this stratification and when funds had been reduced such as at the end of 2014, areas above 2000m no longer received nets and areas from 1600 to 2000m only received under five campaigns in 2015 and 2016. However, fortunately, due to the LLIN donation from the Against Malaria Foundation (AMF) in 2017, all areas received household distribution of nets except areas above 2000m, and some urban areas such as NCD, Goroka, Mount Hagen and Mendi. After 2018, AMF only donated nets to areas below 1600m but the country has been lucky to find funding to fill this gap of between (1600-2000m) in 2019, 2020 and for 2021 through donations from the Global Fund (2018-2021) and the Chinese Government (2020). However, funding for areas between 1600-2000 metres now remains tentative after 2021 as AMF no longer supplies nets to PNG and funds from the Global Fund are not presently enough to cover these areas above 1600m.

One of the conditions of the AMF donation is that RAM would strengthen the way in which surveys are carried out. These new innovative processes are described in the Methodology Section. These methodologies are now being carried out since the beginning of 2017. The major change to the survey methodology suggested by AMF is that previously a village meeting

was called after a survey was carried out where names of family members were read out to ensure that all households had been surveyed. Instead of this process, a summary of every village surveyed is posted for 24 hours in a public place so that villages can ensure that all their family members have been included in the survey. As a further verification process, members of RAM and local health staff team carry out random house surveys of 6% of households in every village to ensure that the survey process has been carried out correctly.

For household LLIN distributions, regardless of where they are carried out, they must include a survey and a distribution phase though implementation methods may considerably vary depending on specific circumstances. RAM's approach has been to concentrate on programme quality thus RAM develop methodologies that ensure that all recipients in an area actually receive nets and that this can be reported accurately.

The other major change to the original PNG programme of 2004 to 2009 carried out by the NDOH is that nets are allocated to families on a needs basis rather than simply the number of people in the family. Data analysis of National Capital District (NCD) data has shown that this gives a ratio of nets needed to be about 47 for every 100 people. In the previous LLINs distribution of Round-3 in 2006 to 2010, nets were allocated at a rate of one net to every 2.5 people. With the programme only receiving 80% of LLIN needs, and most provinces distributing for example two nets to families of three, in practically every province, nets ran out before the end of the distribution. The RAM programme makes all attempts to assure that this distribution anomaly does not happen by collecting all population information at the beginning of the program and then allocate the nets based on family needs. This strategy is practiced to ensure that all families receive nets throughout any given province. The only scenario where survey and net distribution may be done simultaneously is in very remote locations where it is not practically possible to return a second time to a location. This is particularly the case in remote villages which can only be reached by boat or very long treks and it is costly and impractical to return to the villages for a second time.

In terms of coordination, RAM officers are allocated to specific LLGs or health centres where they coordinate the programme together with local health staff. In this capacity, RAM officers act as facilitators in terms of technical guidance to district health teams in each LLG as well as acting as financial officers and assuring quality control of activities taking place.



Fig.3 Survey Volunteer Training At Suki HC (Left) And Ningerum HC (Right)

Schedule

Referring to Table Two, it can be seen that the main distribution in North and South Fly started at the beginning of February and was completed two months later by the end of March. The slow delivery in South Fly was due to the boats for taking nets to the health centres not being

ready as planned and flooding which delayed one officer in Morehead in South Fly much longer than expected. For North Fly, this was done in conjunction with Telefomin in Sandaun with some officers going to Sandaun before completing their areas in North Fly and completing their areas when they returned.

TABLE TWO
General Timetable Of Activities In Western Province

District	Survey		Distribution	
	Start	Finish	Start	Finish
South Fly	01.02.22	05.03.22	08.02.22	28.03.22
North Fly	01.02.22	26.03.22	06.02.22	28.03.22

Methodology

Prior to planning and implementation, a master list of all villages of Western Province was drawn up using data from the 2000 Census and the last RAM survey of 2018 in Western Province. Villages in the list were organised by LLG and Ward. In this master list, the estimated population for 2020 for each village was estimated and recorded in two ways. Firstly, the population of each village is estimated using population figures from the 2000 Census and the estimated annual growth rate for Western Province and then secondly, by taking the population surveyed in 2017 and 2018 and applying the annual growth rate to each village.

In all areas, Health Centres form the hub from which distribution takes place to the respective villages in each health centre's catchment area. Therefore, with the planning data at hand, RAM staff work together with the Provincial Health Office to allocate every village to its nearest health centre (government or Church Based) and outlines how each village is reached from each health centre. From this it is possible to create a budget, estimate how many nets are needed to be sent to each health centre and work out any other logistic considerations such as use of airplanes or boats to deliver nets to some remote areas.

Once all logistical needs are calculated and nets delivered to the province or district, a RAM team will travel to the province. Once they are in the province, RAM officers are allocated to work with each health centre which becomes the centre of operations for that area.

With the arrival of RAM officers, each health facility identifies health staff members or non-health community volunteers to be involved with the programme. If local health staff are selected, then they are referred to as District Health Team (DHT) but if a non-health staff is selected then they are termed as a Team Leader. Both DHTs and Team Leaders are responsible for the survey and distribution of nets. Each DHT and Team Leader works only in the area in which the health facility is based.

Before any activities take place, RAM officers are expected to work with health staff and other team leaders to make detailed plans (micro-planning) of their activities for training, survey, verification and distribution of nets. This process involves making maps of the area, deciding how many teams are needed, and then making detailed work plans for each of the team members. This process also involves verifying that no villages have been left out of the census list and that the whole area is covered.

Also prior to field activities in any given LLG or health centre, a social awareness campaign was carried out in all villages informing villagers of the upcoming survey and distribution. This was also used as an opportunity for RAM officers to become familiar with each area. During this process, key malaria messages were also discussed with villagers such as the need to use LLINs every night.

During the social awareness campaign, a daylong training meeting is normally held at each health facility for all DHT members in that area who jointly carry out the micro-planning exercise. These training and micro-planning sessions as well as all other activities associated with the programme are coordinated by RAM project officers together with health counterparts at provincial and district levels. RAM officers also have the responsibility to ensure the LLINs operation is kept in line with the original budget.

Survey

The survey was carried out in the following way.

- 1) When arriving at a village and before starting the census process, a meeting was held with village elders explaining the process.
- 2) If village elders have an up to date list of all village occupants, the team would use this list to compile a census but still visit every household to confirm this information.
- 3) Where a village is small, e.g., less than 30 families, team members may carry out the census by themselves.



Fig.4 – Training Village Survey Volunteers In Wipin HC (Left) And Tabubil Hospital (Right)

- 4) Where villages are large, village volunteers were identified with the assistance of the village chiefs, elders, health staff and councillors. One volunteer was chosen for each group of about 50 families with volunteers chosen by natural divisions in the village e.g., clans where one volunteer would make a list of only one clan. These volunteers were trained to carry out the survey by actually surveying houses with the team leaders supervising and assessing the recording. Once the team leader was confident that the volunteers knew the survey methodology, they were left to continue with the household survey with survey teams returning within an agreed period to verify the work of the survey volunteers, collect survey books and also to pay the survey volunteer, provided that the work was carried out correctly. The training of volunteers may occur in groups or individually depending on access to the village and its proximity to other villages.
- 5) For each household surveyed, all family members who normally reside at the household for a minimum of nine months were recorded by Name, Age, Sex and Relationship to head of household. All names and other information were recorded in the survey book with one survey form being used for each household.
- 6) After surveying a household, a white copy of the census form was given to the head of household or most senior person present in the household.
- 7) Where a whole household was absent, information was taken from the neighbours and the white survey form left with them.
- 8) In all cases, after the census/list was finished, all the information about the households and number of household members is entered into a summary sheet. This list is then hung in a public place where all villages can verify that the right number of family members for each household has been recorded and that all families have been included in the survey. After

the list has been in a public place for 24 hours, then the volunteer requests for the RAM officer and or DHT to visit the village.

- 9) RAM officers and DHTs must visit three households randomly from each survey book (6%) and verify that the survey has been carried out correctly. Only when this has been done, then the volunteer can be paid.
- 10) If a village was surveyed by more than one volunteer, then volunteers were asked to work together so that lists can be hung together and the village volunteers can be verified at the same time. This process also ensures that households do not appear on more than one list. After this process, both the volunteers and the village elders sign a form to verify that this was done.
- 11) All village volunteers received a standard payment of 20 kina a day. Experience has shown that volunteers can usually only survey about 25 households a day, so for the most part, they would receive up to two days' allowance to complete a survey book (50 households).
- 12) All volunteers were also given a small training manual. Contained in this training manual are key health education messages about malaria which volunteers are expected to discuss with households. This perhaps is the only project in PNG that is able to reach down to potentially every household in the country.



Fig.5 – Survey Verification (Left) With Public Display Of Those Surveyed (Right) In Daru

To aid with the survey, the master plan with names of all census units in all the wards in the district had been printed out and given to all the DHTs and team leaders. This document also provides the projected population per census unit as well as other information which might be useful to the area concerned.

After collecting survey data from each village, the information is immediately compared with the data on the master sheet. Where the surveyed population is very different from the projected population, the project staff make enquiries into the reasons for these discrepancies.

Following the survey, all data was entered into a computer where possible or entered into a master sheet of the area concerned. For each village, nets were allocated to each family on a needs basis and this is also entered into the computer or master sheet. This process ensured that all villages received nets and that there would be no shortfalls.

The needs basis in PNG is based on the assumption that children under the age of six sleep with their parents, after which boys and girls are grouped separately from their parents. Nets are also allocated based on the number of children in the house, their ages, and whether there are other dependents living in the households such as grandparents. A full description of the allocation system can be obtained from RAM officers but suffice to say a family of four could receive between one to four nets depending on the sex and age of family members.

Nets are allocated to each LLG based on assumed populations of each LLG and it was important prior to the distribution to ensure that when allocations had been carried out to families and villages that there were enough nets available to cover each and every family.

Distribution

There was no official launch for the LLINs distribution in Western Province. However, prior to distribution there was a social awareness phase where the project teams informed communities about the arrival of the distribution teams, especially those accessible by road.

The LLINs were then distributed to teams depending on the needs of each village. The LLINs were then distributed by village or wards depending on whether villages were close together. In this latter case, a central location was identified in the ward and then distribution of nets was carried out. In terms of distribution sites, villages were organised in different ways to make the flow of nets easy and effective. However, the actual organisation depended on each team and the structure of the various groups receiving nets.

All net packaging was opened at distribution site with a district code printed on each net e.g., WP22 meaning Western Province 2022. This code is added to identify nets to assist in future monitoring exercises as well as discouraging householders from selling the nets on the open market.

Some examples of the process used to control the crowd includes;

- Arranging the people according to the serial numbers in the survey books e.g., 72001 - 72050 and then calling the names and the serial numbers.
- Call the names of the owners of the households, collect the white copy and give the nets.
- Wait for everyone to come to the distribution site, collect all the white copies and sort the copies with the pink copies. Call the names on the white copies and give the nets.

Some of the following control methods were used.

- Everyone who presented with a white copy was given LLINs at the distribution site with LLINs only given to the owner of the house or a member of the house whose name is written on the back of the survey form.
- Those people who lost the white receipts were left to the end of each distribution, with nets only being issued if the name of the person collecting the nets was found on the back of the pink copies.
- For those families who were absent at the time of distribution, their names were written in a form – MOSQUITO NETS HELD IN TRUST BY VILLAGE CHIEFS FORM and the nets allocated to missing families were given to chiefs or any person entrusted by the community with the forms for these families to collect their LLINs later.
- Householders are now being asked to make a thumb print as proof of delivery of nets to a household. The Global Fund had formally asked that householders should sign for delivery of nets. This was considered problematic as many householders are illiterate and even where householders can write, this process takes a long time in what is often a very chaotic and charged environment where speed is of the essence.

It should also be noted that surveys and distributions took place at more or less the same time in some remote places of Western Province. This is particularly true for mountainous villages or villages at the end of rivers which might take several hours or days to reach. In these instances, estimations based on the 2000 Census data and local knowledge used to pre-allocate nets. Teams were then dispatched to these areas with nets. On arrival in these remote places, surveys took place and were immediately followed by a distribution based on the survey results.

Other details

In the case of Western Province, all LLINs were ultimately delivered to Port Moresby by ship from China in six containers in two different shipments funded by the Global Fund and PNG Sustainable. These were a new type of nets known as Yahe. All these nets are light blue in colour. All nets arriving in Port Moresby first stored in the GFS Transport yard before being sent by sea to both Kiunga and Daru. From Daru the nets were sent by boat to the various health facilities and from Kiunga by road to Tabubil and various health centres while other health facilities were reached by dinghy.

Results

Table Three shows the LLIN distribution data by district and Table Four by Local Level Government (LLG). These table give the actual population surveyed together with the number of LLINs distributed by district. In total, 92,773 LLINs were distributed to a population of 183,454 people in the two districts. This resulted in distribution of 51 nets for every 100 people in the province.

TABLE THREE
Nets Distributed At District Level In Western Province

District	Population from 2000 Census	Population Of Targeted Areas In 2018	Total Estimated Population 2022	Population Surveyed 2022	House Holds Surveyed 2022	Nets Issued 2022	Nets Per 100 People	Growth Rate Against 2018 Survey
South Fly	46,537	77,788	85,746	83,930	13,584	42,364	50	2.57
North Fly	51,479	95,302	105,052	99,524	16,578	50,409	51	1.46
Totals	98,016	173,090	190,798	183,454	30,162	92,773	51	1.96

Referring to Table Three and Table Four, it can be seen that the overall population growth rate is less than recorded in most of the country and perhaps represents a migration out of North and South Fly to other parts of the country. Urban areas as expected have the highest growth rates and remote areas the lowest. Most notable are the villages of Nomad Rural where there is a negative growth rate suggesting that people are clearly leaving the area to more accessible locations.

TABLE FOUR
Nets Distributed At LLG Level In Western Province

LLG	District	Population from 2000 Census	Population Of Targeted Areas In 2018	Total Estimated Population 2022	Population Surveyed 2022	House Holds Surveyed 2022	Nets Issued 2022	Growth Rate Against 2018 Survey	Nets Per 100 People
Daru Urban	South Fly	12,935	21,808	24,039	23,597	3,182	12,079	2.66	51.2
Kiwai Rural	South Fly	13,448	22,599	24,911	24,515	3,582	12,180	2.75	49.7
Morehead Rural	South Fly	11,504	19,398	21,382	20,602	3,946	10,393	2.03	50.4
Oriomo Bituri Rural	South Fly	8,650	13,983	15,414	15,216	2,874	7,712	2.86	50.7
Kiunga Rural	North Fly	13,350	20,097	22,153	22,047	4,012	11,103	3.14	50.4
Kiunga Urban	North Fly	8,295	25,485	28,092	26,001	4,187	13,127	0.67	50.5
Ningerum Rural	North Fly	13,366	22,822	25,157	23,665	4,271	12,258	1.22	51.8
Olsobip Rural	North Fly	3,765	5,099	5,621	5,457	999	2,900	2.29	53.1
Star Mountains Rural	North Fly	12,138	21,271	23,447	21,846	3,027	10,780	0.89	49.3
Nomad Rural	North Fly	565	528	582	508	82	241	-1.28	47.4
Totals		98,016	173,090	190,798	183,454	30,162	92,773	1.96	50.6

Table Five shows that 299 nets were left over at the end of the program and were donated to health centres. In general, these nets were left where the nets were loose and no longer in bales or the nets were very few or the nets could be difficult to return to a central location. In general, these nets would be used for hospital beds or for antenatal mothers.

TABLE FIVE
Nets Donated To Health Facilities

District	LLG	HC	Donated
South Fly	Kiwai Rural	Mabudawan HC	41
South Fly	Morehead Rural	Morehead HC	58
South Fly	Morehead Rural	Suki HC	47
South Fly	Morehead Rural	Wipim HC	10
South Fly	Oriomo Bituri Rural	Wipim HC	29
North Fly	Ningerum Rural	Hawanai SHC	7
North Fly	Olsobip Rural	Dahamo AP	12
North Fly	Star Mountains Rural	Tabubil Hos	35
North Fly	Nomad Rural	Komokato	47
North Fly	Nomad Rural	Tobi	13
TOTAL			299

With reference to Table Six, it can be seen that the overall operational cost of the programme was 514,762.69 Kina (Approximately US\$ 147,045) resulting in a cost of about 5.55 Kina or US\$1.59 per net delivered. This was about 10.0% over the anticipated budget. While there were saving in Human Resources there were big overspends in boat costs, particularly getting the nets by barges to health centres in South Fly and having to use helicopters in North Fly as airstrips in many places are not serviceable. However, overall, considering the conditions, the cost was reasonable for the work done.

TABLE SIX
Cost Of Programme In Western Province (All Costs in Kina)

Expense Types	Budget	Actual	Variances	% Variance
Human Resources	208,118.08	122,990.00	85,128.08	59.1
Fuel Cost	38,358.00	39,947.81	-1,589.81	-4.1
Car Hire Cost	92,400.00	127,632.66	-35,232.66	-38.1
Boat Hire Cost	87,600.00	144,670.00	-57,070.00	-65.1
Aircraft Hire Cost	13,200.00	62,801.45	-49,601.45	-375.8
Stationeries/Supplies	6,000.00	1,168.35	4,831.65	19.5
5% Contingency	22,283.80	15,552.42	6,731.38	69.8
Total	467,959.88	514,762.69	-46,802.81	110.0

TABLE SEVEN
Cell and Radio Coverage In Western Province

District	Villages	House Holds Surveyed	Digicel	Bmobile	Houses with Radios	Villages With Radio Networks
South Fly	247	13,584	211	2	3,299	124
North Fly	286	16,578	226	70	5,410	189
Total	533	30,162	437	72	8,709	313

Referring to Table Seven, this shows the radio and cell phone coverage for North and South Fly is remarkably good considering the remoteness of much of these two districts though radio coverage could be improved but overall it makes health messaging easier than expected in these areas.



Fig.6 – Survey Verification In Samari (Left) And Matkomrae (Right)

Conclusions

Overall, it can be said that the LLIN distribution in North and South Fly was generally a huge success both in terms of results and great collaboration between staff from RAM, provincial and district health authorities, and the Catholic and Evangelical Health Services who have a presence in the districts receiving nets. Through this collaboration, the data suggests that all villages and practically all families in those villages received nets despite any local challenges.

There were some challenges which include:

- Delay in delivery of nets by MAF prolonged operations as some officers in North Fly finished survey and had to wait for nets to start off distributions
- Delay in delivery of nets to Mabudawan, Morehead, Teapopo, Upiara and Suki by the service provider prolonged operations as most officers finished survey and had to wait for nets to start off distributions.
- Continuous downpour of rain in Morehead Health Centre resulted in change of mode of transport from mostly vehicle hire usage to boat which delayed operations substantially. Due to this situation, it was necessary to procure an extra supply of Zoom which was not budgeted for.

On the positive side,

- There was excellent collaboration between the all health staff and RAM which was reflected in a congratulatory email sent by Provincial Disease Control Officer commending the great working partnership. This is something that very rarely happens.
- Despite the challenges faced, officers managed to complete their operations successfully.

Other than this, as with other provinces in the country where RAM has operated in over the last ten years, the methodologies used this time, including survey verification processes appeared practical and were openly welcomed by both villagers and implementers, particularly the practice of hanging up the list of names in the middle of the village following a survey. This

allowed communities to feel that they were part of a transparent process. This is not to say that perhaps some extra people managed to slip into the books, but in general, it was felt that the system was fair and included practically everyone concerned. The use of the master lists also ensured that all villages were reached and accounted for.

The review of the data prior to the distribution was also important. This ensured that all villages and families received the correct numbers of nets. The 2000 Census Lists were very important to ensure that survey teams reached all villages: without the complete list of villages, it would be very difficult to make a detailed report.

The greatest complaint still received from communities was the number of nets they received. Even though the team explained the logic of how the allocation of nets is calculated, some families still expect one net per person, others expect it to be based on a fixed allocation based on the number of people in the family, and yet others thought they would be given nets based on the number of nets they stated they already had. This highlights that a better system of explaining the allocation system still needs to be developed. In general, unlike some previous districts covered by RAM and DHTs of Western Province assisted in the allocation of the nets which meant they were in a better position to explain the distribution system on the ground. Nevertheless, despite all the difficulties involved, it would appear that the vast majority of community members accepted the outcome and there were no real problems or complaints encountered.

Acknowledgements

On behalf of the Rotarians Against Malaria household distribution team who worked in North Fly and South Fly districts, we would like to sincerely acknowledge and thank the Western Province Health Authority and the District Health Staff of the two districts for the excellent help and cooperation during the Long Lasting Insecticide Nets (LLINs) distribution programme.

In particular, we would like to thank at provincial level Dr Niko Wuatai (Chief Executive Officer) and his team with special thanks to Dr Mathias Bauri (Director Public Health), Mr Gabriel Kama (Provincial Disease Control Officer), Mr Doboio Danu (Information Officer-South Fly), Mr Rody Ukin (Health Manager-North Fly) and Mr Mark Gene (Rural Health Coordinator-North Fly).

For the district staff, we would like to sincerely thank all those who tirelessly took part in the programme, and in particular we would like to mention the following people who were instrumental in providing the local expertise and advice from planning to implementation of the programme in the two districts namely:

North District

Name	Occupation	Institution
Mr. Rody Ukin	District Health Manager	Kiunga District Health Office
Mr. Mark Gene	District Health Officer	Kiunga District Health Office
Mr. John Lari	Health Extinction Officer	Kiunga District Health Office
Mr. Mulat Kenedy	Community Health Worker	Kiunga District Health Office
Sr Violaine	Officer in Charge	Membok Health Centre
Mr. Peter Boli	Health Inspector	Tabubil Hospital
Mr. Shinnel Waki	Environmental Officer	Tabubil Hospital
Mr. Kosmas Hotit	Community Health Worker	Sisimakam Aid Post
Mr. Mike Tifak	Community Health Worker	Sisimakam Aid Post
Mrs. Martina Dusi	Acting Director	Rumginae Hospital
Mr. Tren Dupe	Health Promotion Officer	Rumginae Hospital
Mr. Eddy Marndun	Assistant Officer in Charge	Tarabits Health Centre

Mr. Frank Tape	Community Health Worker	Ningerum Health Centre
Mr. Siveng Nirong	Community Health Worker	Ningerum Health Centre

South District

Name	Occupation	Institution
Mr. Gini Sanai	Community Health Worker	District Health Office
Ms. Vivian Sere	Officer in Charge	Mabudawan Health Centre
Mr. Esonke Waurang	Nursing Officer	Mabudawan Health Centre
Mr. Masluk Gibia	Care Health Worker	Mabudawan Health Centre
Ms. Ilesso Waram	Medical Laboratory Scientist	Mabudawan Health Centre
Ms. Wendy Maki	Nursing Officer	Upiara Health Centre
Mr. Diwara Boraya	Community Health Worker	Upiara Health Centre
Sr. Guma Maraga	Officer in Charge	Morehead Health Centre
Mr. Marat Mege	Community Health Worker	Morehead Health Centre
Mr. Solomon Sakoro	Community Health Worker	Morehead Health Centre
Mr. Mobeia Abusi	Officer in Charge	Wipim Health Centre
Mr. Eitude Morris	Community Health Worker	Samari Health Centre
Mr. Bothen Batai	Community Health Worker	Suki Health Centre
Mr. Nimoi Siuri	Community Health Worker	Suki Health Centre
Mr. Jerry Kinemi	Community Health Worker	Suki Health Centre

RAM would also like to thank Tabubil Hospital staff and OkTedi Mine staff for assisting the project in Tabubil. Special thanks to Marget Samei (Tabubil Hospital Administrator), Dr. Charlie Turharus (OTML Health Services Manager), Yon Buhuyawa (Community Relations OTML) and Karo Yama (Logistics Manager OTML).

RAM would like to specially acknowledge the support received from established and local service providers for logistical support namely; Fell Enterprise for transporting five pallets of nets and fuel drums from Port Moresby AES Wharf to Daru for South Fly Operations and three containers to Kiunga for North Fly Operations. RAM also thanks Regs Services Limited for shipping nets and fuel drums to Mabudawan, Morehead, Teapopo, Upiara and Suki.

RAM also thanks No.1 Hire Car, Island hire car, Jah Investment hire car, Kayok hire car and all the local hire car owners and local boat for providing their service for this operation. We would not have reached many communities without the dedication of the drivers and operators. RAM also extends its gratitude to MAF Aviation who provided us aircraft support and Heli Niugini Aviation who provided helicopter support to reach remote areas where the airplane could not land. RAM would like to also thank Puma Energy for supplying bulk fuel for the operation.

RAM also thanks all the church run health facilities coordinated under Catholic Church, Evangelical Church and lastly to all the Government run facilities for allowing their staff to work with the RAM team.

Last but not the least, RAM would like to extend our acknowledgement and appreciation to all the hard working volunteers and other volunteers and local community leaders for ensuring all homes were surveyed and assisted in distributing all the nets. RAM thanks you all very much for your hard work, support and local expertise in making the overall program a success.

Appendix One – History Of LLIN Distribution In PNG

The use of Insecticide Treated Nets (ITNs) started in PNG in 1985 when the PNG Institute of Medical Research (IMR) conducted one of the first trials demonstrating the health impact of treating mosquito nets with insecticide. The study, done near Western, showed a reduction of *P. falciparum* incidence and prevalence in children below five years of age sleeping under permethrin-treated nets. The protective effect of insecticide-treated nets (ITNs) was also confirmed in many other trials around the world. As a consequence of such findings, the national malaria control program in PNG started emphasizing the use of ITNs in 1989. However, no regular or large-scale distribution of ITNs was carried out at this time.

In the following years, coverage with mosquito nets and other control interventions remained patchy and low in many parts of PNG. It was during this period that Rotarians Against Malaria (RAM) was created from the Port Moresby Rotary Club in 1997. Using a donation of 150,000 treated nets given to them from the National Department of Health (originally from AusAid), RAM successfully ran a revolving fund of nets in which nets were sold at a price which allowed the proceeds to buy more nets. RAM did this successfully for many years distributing about 45,000 treated nets a year from 2000 to 2004.

Prior to 2004, most treated nets had to be re-treated every six months or a year which requires a lot of work and organisation. In early 2004 everything changed with the introduction of Long-Lasting Insecticidal Nets (LLINs) which would last for 20 heavy duty washes and effectively no longer required to be treated repeatedly. This change in nets also coincided with the introduction of the Global Fund into PNG known as the Global Fund Round 3.

From 2005 to 2009 the malaria programme in PNG received and delivered about 2.3 million nets throughout the country at a rate of one net for every 2.5 people. The delivery of nets to village level was under the provincial health authorities and reached most parts of the country with Rotarians Against Malaria (RAM) being responsible in delivering the containers of nets to the provinces from Port Moresby and Lae where the nets arrived from overseas.

While the programme was very successful in some areas it was not so successful in others. Problems included slow release of funds from central to provincial level, some provinces not following technical guidelines given resulting in some areas not being covered, and technical and financial reporting leaving a lot to be desired in many of the provinces. When further funds became available in what is known as the Global Fund Round Eight, it was decided that Rotarians Against Malaria (RAM) would take over the coordination of the LLIN programme.

This change has resulted in RAM being responsible for the overall coordination of the LLIN distribution of LLINs in the country particularly in the areas of quantification, procurement, reporting and delivery to provincial and district level. However, the actual delivery of nets to village level is a collaboration between RAM, provincial health authorities and district health and health centre staff.

Fig.1 shows the distribution of nets to districts and provinces from 2006 to 2009 while Fig.2 shows the distribution of nets from 2010 to 2014 and Fig.3 shows the distribution from 2015 to 2017 which includes under five distributions in 2016 and 2017. Under Five distributions had been carried out in areas above 1600m and in Port Moresby and Lae City due to lack of funds. This situation changed when support from Against Malaria Foundation was received.

Up until December 2020, a total of 13.0 million LLINs had been distributed to household level under the coordination of RAM. Therefore, with the 2.5 million nets distributed from 2006 to 2009, this means that about 15.5 million nets have been delivered to household level in PNG since 2006. This is more than one net per every person in PNG. RAM has also distributed

about another 1.5 million nets to health centres for distribution to pregnant women and for prisons and boarding schools.

It should also be noted that alongside developments related to treated mosquito nets, the first cases of chloroquine-resistant malaria were reported in 1976. This progressed rapidly to widespread resistance of *P. falciparum*, and to a slightly lesser extent *P. vivax*, to chloroquine, amodiaquine and sulphadoxine-pyrimethamine (SP). In studies conducted between 2003 and 2005, even combination regimens of these drugs faced up to 29% resistance of *P. falciparum*². This situation together with Global Fund Round 8 also saw the introduction of artemether lumefantrine branded as Malawan and IPT (Intermittent Preventative Treatment) for antenatal women using Fansidar (Pyrimethamine Dapsone).

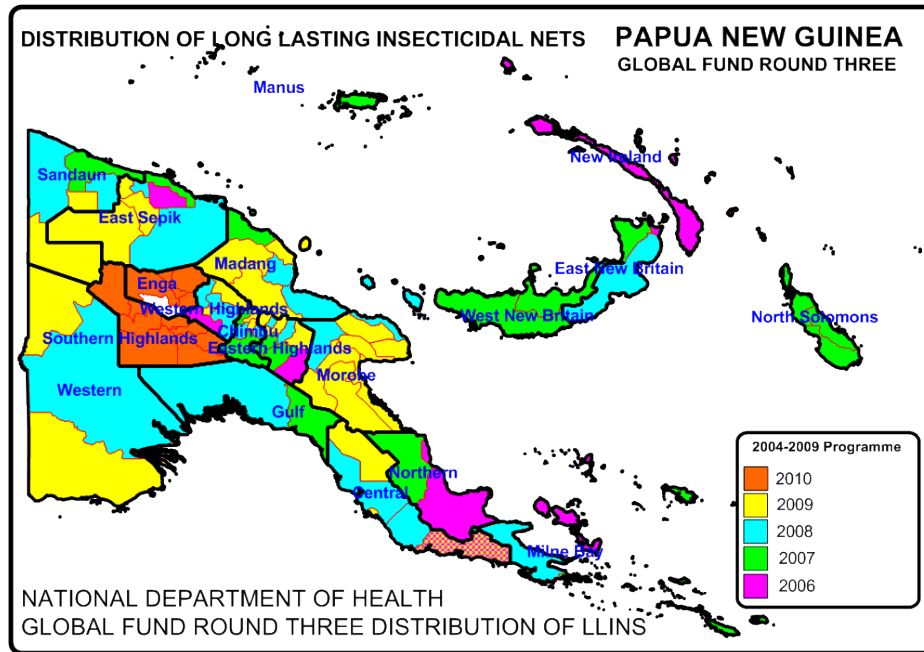


Fig. 1 Distribution Of Nets Under National Department Of Health From 2006 To 2010

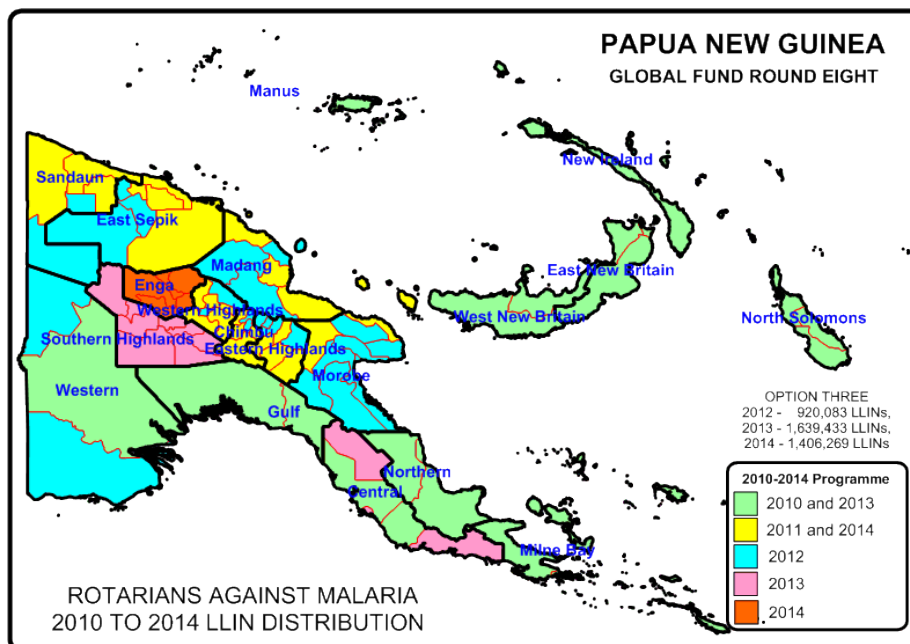


Fig.2 Distribution of LLIN Programme 2010 to 2014

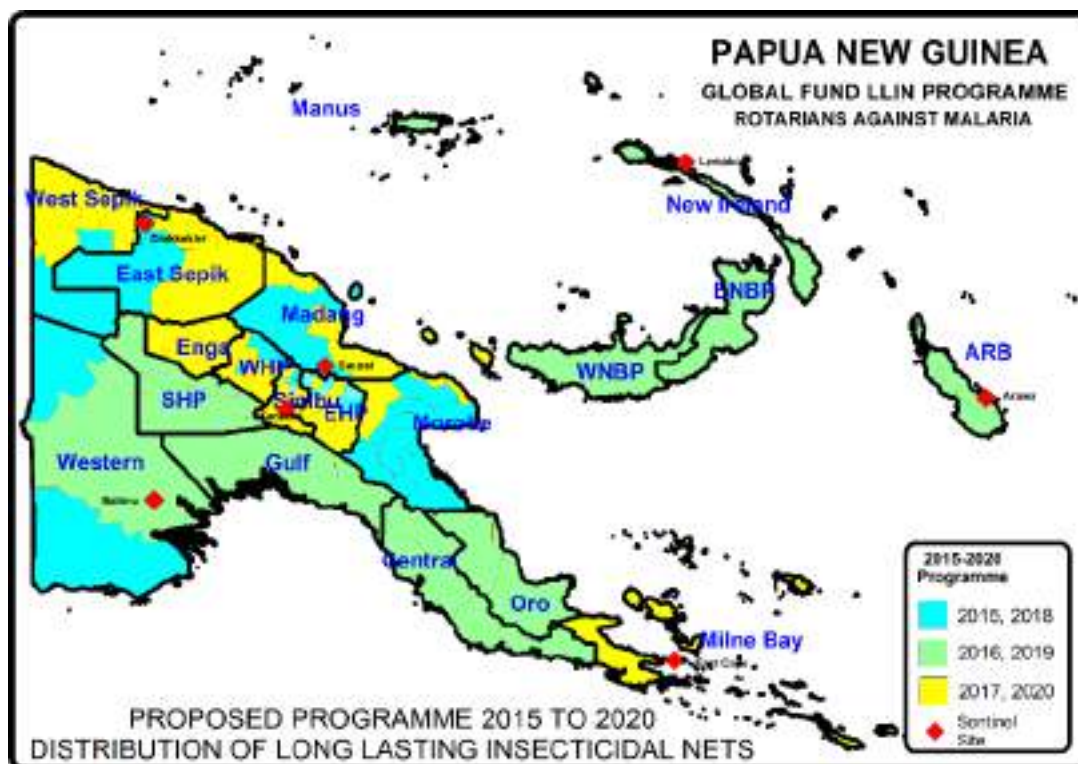


Fig.3 LLIN Distribution Programme 2015 to 2020

TABLE ONE - LLINs Delivered In PNG Under Coordination Of RAM From 2010

Period	Dates	Districts	Provinces	Nets Delivered
Phase One (2010-2011)	Nov 09 - Oct 11	50 Districts	18 Provinces	1,890,448
Year 3 (2012)	Nov 11 - Sep 12	27 Districts	10 Provinces	832,671
Year 4 (2013)	Oct 12 - Sep 13	28 Districts	12 Provinces	1,210,391
Year 5 (2014)	Oct 13 - Sep 14	23 Districts	11 Provinces	1,374,791
Year 5 (2014) No Cost Extension	Oct 14 - Dec 14	Okapa, Lufa, Madang, Angoram, Maprik, Yangoru Saussi, Wewak, Aitape Lumi, Nuku and Vanimo Green	EHP, Madang, East Sepik and Sandaun	454,806
Year 6 (2015)	Jan - Dec 2015	29 Districts	11 Provinces	932,822
Year 7 (2016)	Jan - Dec 2016	27 Districts	13 Provinces	805,597
Year 8 (2017)	Jan - Dec 2017	36 Districts	13 Provinces	1,543,947
Year 9 (2018)	Jan - Dec 2018	27 Districts	11 Provinces	1,211,922
Year 10 (2019)	Jan - Dec 2019	26 Districts	12 Provinces	1,266,525
Year 11 (2020)	Jan - Dec 2020	28 Districts	13 Provinces	1,495,368
	Jan - Mar 2021	Aitape Lumi, Nuku, Yangoru Saussi, Maprik, Angoram, Mount Hagen, Del, Jimi	Sandaun, East Sepik, Western Highlands, Jiwaka,	232,042
	Apr - Jun 2021	Yangoru Saussi, Jimi, Gumine, Kundlaw a Gembogl, Sinasina, Yongomugl, Asaro, Kainantu and Ungai Benna	Jimi, Chimbu, EHP	377,865
	Jul - Sep 2021	Bulolo, Menyamya, Lae, Finschafen, Naw aeb, Huon Gulf, Kabw um, Usino, Bundi, Karkar, Wosera Gaw i	Morobe, Madang, East Sepik	426,413
	Oct - Dec 2021	Middle Ramu, Ambunti Drekkiekier	Madang, East Sepik	265,136
New Funding Model (2015-2021)				8,557,637
Round Eight (2010 - 2014)				5,763,107
Overall Total Phase One and Phase Two And NFM				14,320,744

Appendix Two – Malaria In Western Province Compared With Other Provinces

Fig.1 shows the decrease of malaria from 2007 to 2015 in all provinces, Fig. 2 shows the actual malaria incidence in 2020 compared with other provinces and Fig.3 shows annual malaria trends from 2017 to 2021. In Western, it can be seen from Fig.1 that malaria decreased from 2007 to 2015 by 73% which is similar to many of the coastal areas of PNG. In Fig.2, in 2020 it can also be seen that in Western the malaria incidence is 125 per 1000 which together with Central Province is one of the lowest incidences of malaria in the coastal provinces of PNG. Fig. 3 and Fig.4 show the malaria incidence by year with Fig.4 showing malaria incidence compared with net distributions. It can be noted that in general, LLIN distributions have resulted in decreases of malaria incidence. However, the distributions after 2016 have resulted in shorter duration of effect which in 2021 resulted in very high increases of malaria in many areas. We are hoping that the nets distributed at the beginning of 2022 will have a longer lasting effect.

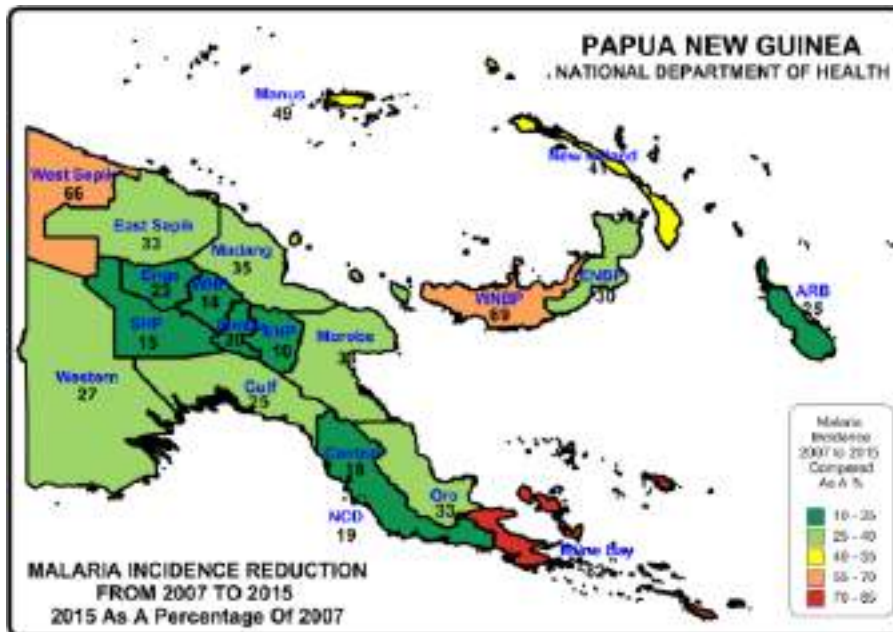


Fig.1 – Relative Reduction Of Malaria In Provinces Of PNG

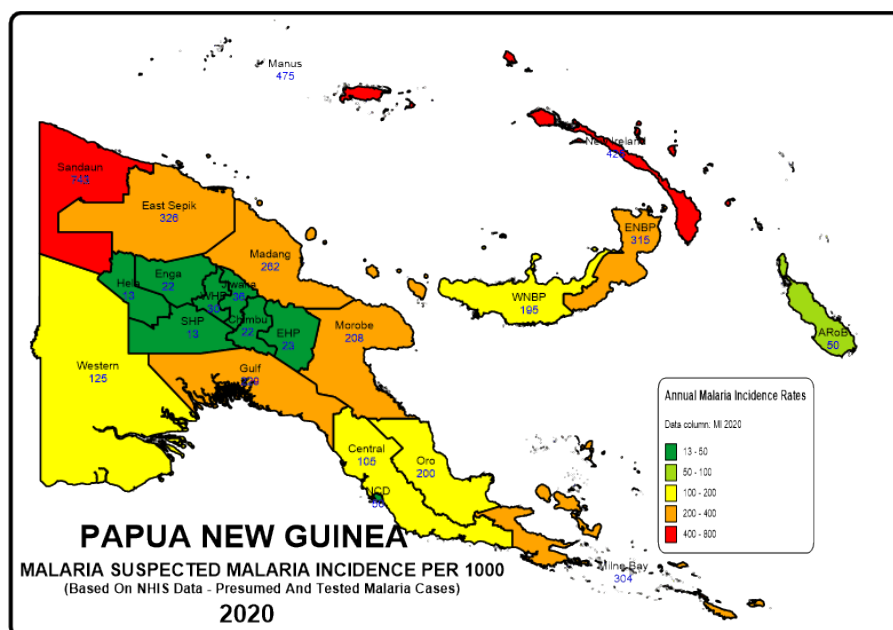


Fig.2 – Reported Malaria Incidence In 2020

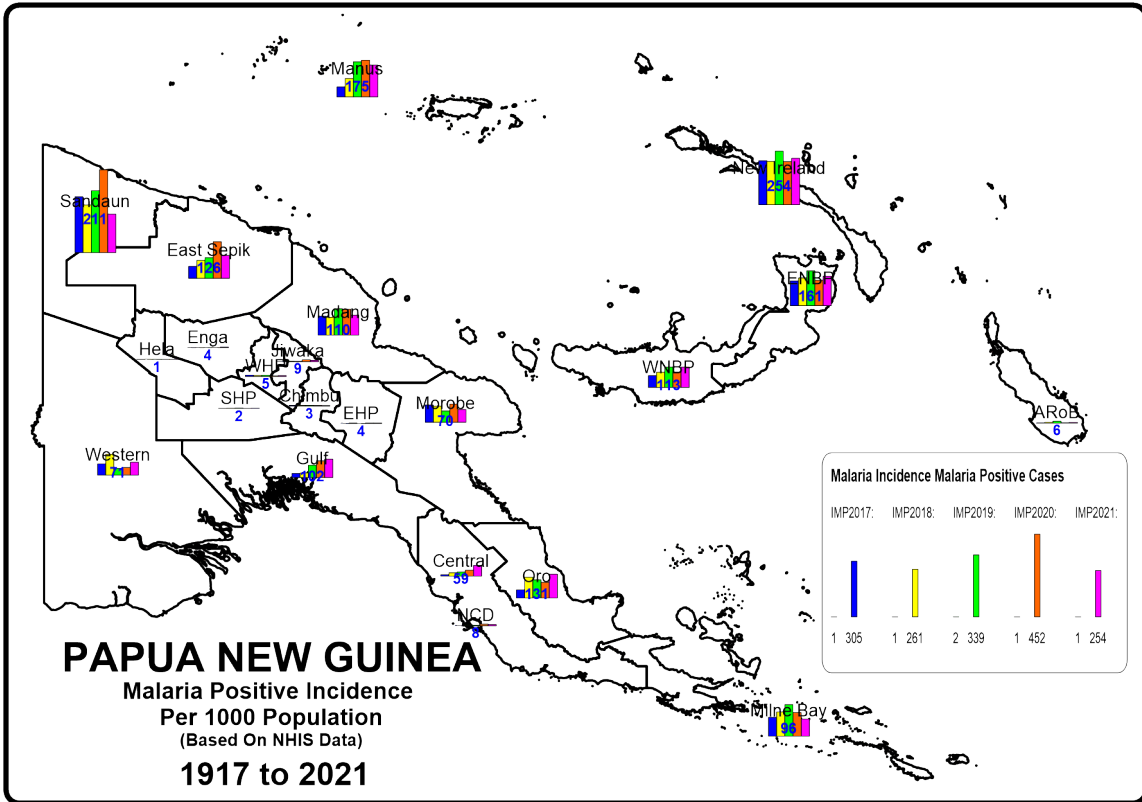


Fig. 3 - Reported Malaria Incidence In PNG From 2016 To 2020

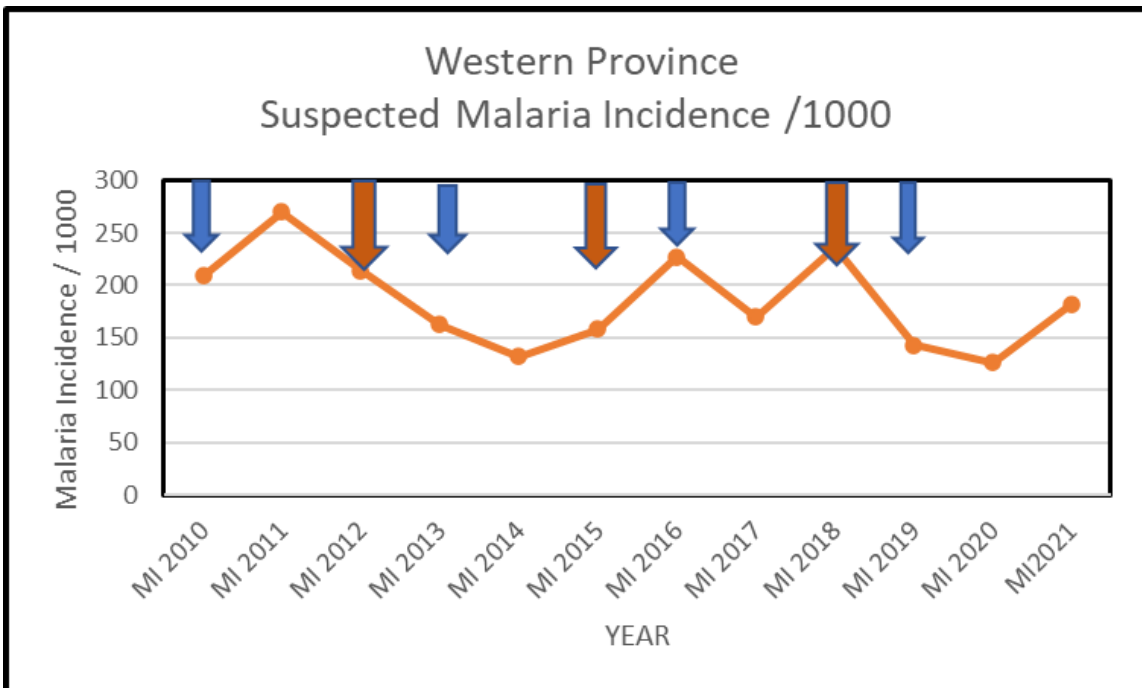
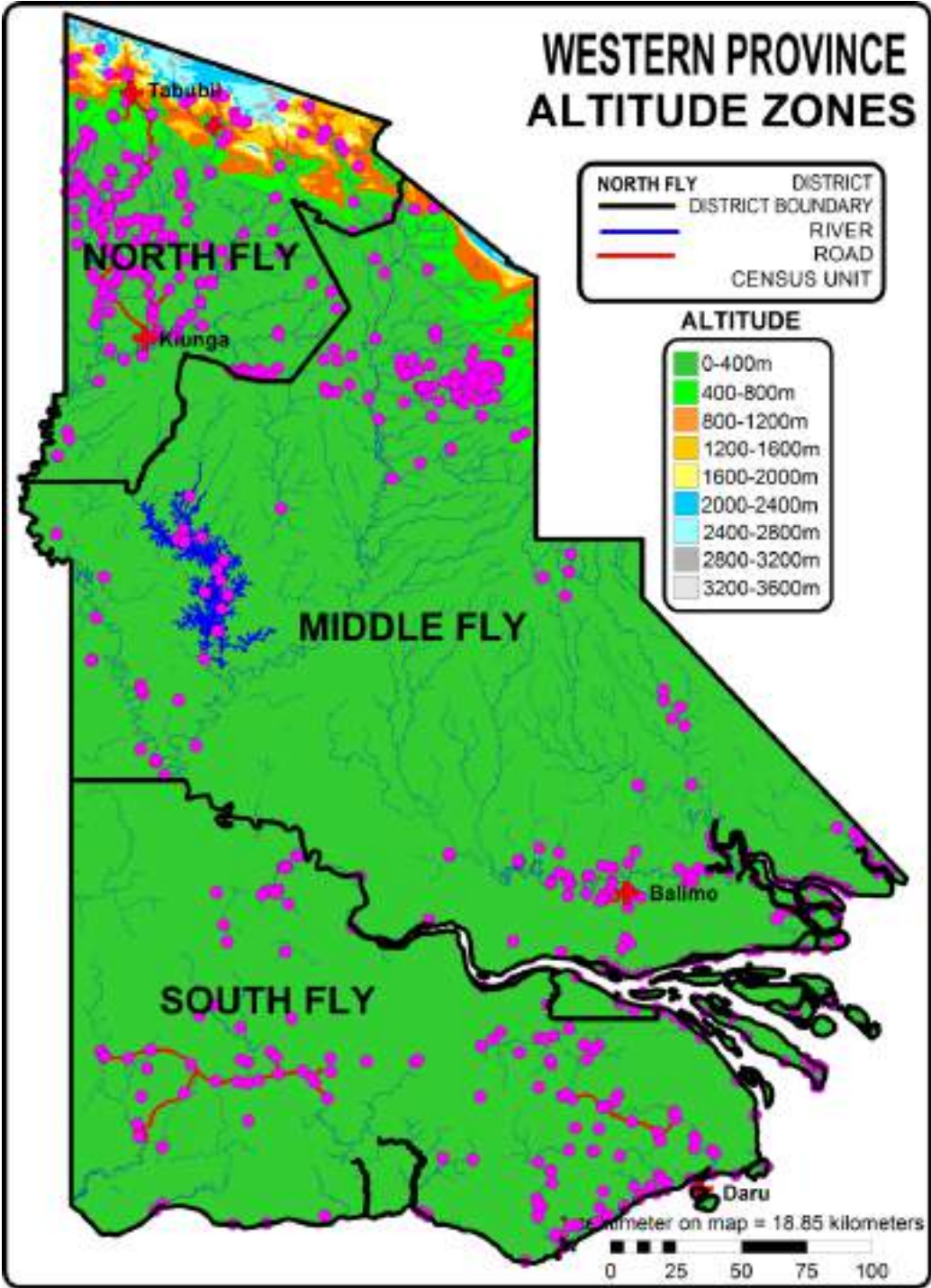


Fig. 4 – Malaria Incidence Versus Distribution Of Nets
Blue arrows represent LLIN distributions done in Middle Fly in 2010 and 2013, 2016 and 2019 and brown arrows represent LLIN distributions in North and South Fly in 2012, 2015 and 2018

Appendix Three - Malaria By Altitude

Western Province is a coastal province on the south coast of mainland of Papua New Guinea (PNG). It is a very low lying district, much of which is swamp land, and is bisected by the Fly and Strickland Rivers. (90% of the population live in altitudes below 400m with a further 8% living below 800m. For practical purposes the whole population of Western Province live in malaria areas with the exception of a very few people who live high in the mountains where malaria is likely to be absent.

Fig. 1 Altitude Zones In Western Province



Appendix Four – Other Photographs



Distributions In Daru (Left) And Tabubil (Right)



Distributions In Suki (Left) And Ningerum (Right)



Distributions Of LLINs In Tarakbits (Left) And Seltamin (Right)



Distributions In Morehead (Left) and Wipin (Right)

OTHER PICTURES



Container Storage (Left) And Boat Delivery In Daru (Right)



Boat Delivery In Mabudawan (Left) and Using Aircraft In Selbang (Right)



Helicopters In Olsabip (Left) And Using Canoes To Reach Dahomo (Right)



Boat Deliver To Morehead (Left) And Trekking In Bolibip

ANNEX ONE

**WESTERN PROVINCE
NORTH FLY
LLIN DISTRIBUTION SUMMARY SHEET**

LLG	WARD	VILLAGE	Estimated 2021 Population Based 2000 On Census	Estimated 2021 Population Based On 2018 Survey	Health Centre	Population Surveyed	House Holds Surveyed	Nets Issued	Date Of Distribution	Villages	Digicel	Bmbole	Houses With Radios	Radio Networks	Comments
NORTH FLY			105,052	105,052		99,524	16,578	50,409		286	226	70	5,410	189	
KIUNGA RURAL			27,545	22,153		22,047	4,012	11,103		84	41	6	996	84	
1	Briompinai	Briompinai	1,164	1,250		906	139	460		3	3	0	0		
		Briompinai	464	465	Rumginae Hos	437	70	220	16.02.22	1	1	0	0		Road
		Rumginae	629	634	Rumginae Hos	295	45	153	16.02.22	1	1	0	0		Shares close borders with Menumsore so majority of the population included under rightful village Menumsore wd 20
		Rudmesuk	70	151	Rumginae Hos	174	24	87	16.02.22	1	1	0	0		Road
2	Timindimasok	Timindimasok	792	795		841	150	422		1	1	1	87		Road
		Timindimasok	792	795	Kiunga DHO	841	150	422	15.02.22	1	1	1	87		Radio Fly
3	Atkamba	Atkamba	1,108	579		616	113	326		3	0	0	26		Radio Fly
		Bongubun	173	58	Kiunga DHO	70	11	40	26.02.22	1	0	0	5		Boat
		Atkamba	902	520	Kiunga DHO	503	95	264	26.02.22	1	0	0	19		Radio Fly
		Tiwere	33	0	Kiunga DHO	43	7	22	26.02.22	1	0	0	2		Radio Fly
4	Dome	Dome	1,675	1,243		1,160	189	590		1	1	0	0		
		Dome	1,675	1,243	Rumginae Hos	1,160	189	590	13.02.22	1	1	0	0		By Vehicle to the waterfront and cross over by dinghi (K5 Fee)
5	Gi	Gi	1,133	765		802	145	403		1	1	1	134		
		Gi	1,133	765	Kiunga DHO	802	145	403	24.02.22	1	1	1	134		Radio Fly
6	Gre	Gre	619	859		866	131	443		1	1	1	128		Radio Fly
		Gre	619	859	Kiunga DHO	866	131	443	23.02.22	1	1	1	128		Radio Fly
7	Griengas	Griengas	737	590		603	127	279		1	1	1	68		Radio Fly
		Griengas	737	590	Kiunga DHO	603	127	279	24.02.22	1	1	1	68		Radio Fly
8	Drimdemasuk	Drimdemasuk	1,118	1,178		1,091	184	554		2	1	0	145		Radio Fly
		Drimdemasuk	922	901	Kiunga DHO	821	131	419	04.03.22	1	1	0	145		Radio Fly
		Gibaretmin	196	278	Kiunga DHO	270	53	135	13.03.22	1	0	0	0		Radio Fly
9	Drimgas	Drimgas	607	334		574	101	286		4	0	0	29		Radio Fly
		Drimgas	272	208	Kiunga DHO	469	85	231	22.02.22	1	0	0	16		Radio Fly
		Tupensomna	116	126	Kiunga DHO	105	16	55	22.02.22	1	0	0	13		Radio Fly
		Hunerinai	138	0	Kiunga DHO					1					Radio Fly
		Dupe	80	0	Kiunga DHO					1					Radio Fly
10	Gasuke	Gasuke No.1	543	686		669	120	344		2	0	0	16		Radio Fly
		Gasuke No.1	289	324	Kiunga DHO	325	56	167	11.03.22	1	0	0	16		Radio Fly
		Gasuke No.2	254	362	Kiunga DHO	344	64	177	11.03.22	1	0	0	0		Radio Fly
11	Gusiore	Gusiore	324	234		233	46	117		1	0	0	25		Radio Fly
		Gusiore	324	234	Kiunga DHO	233	46	117	12.03.22	1	0	0	25		Radio Fly
12	Timingondok	Timingondok	644	471		607	107	294		2	0	0	0		Radio Fly
		Giponai	219	172	Kiunga DHO	227	36	118	13.03.22	1	0	0	0		Radio Fly
		Timingondok	425	299	Kiunga DHO	380	71	176	13.03.22	1	0	0	0		Radio Fly
13	Drimskai	Drimskai	386	358		362	70	185		2	0	0	11		Radio Fly
		Drimskai	118	137	Kiunga DHO	147	32	76	17.02.22	1	0	0	4		Radio Fly
		Sipipen	268	222	Kiunga DHO	215	38	109	17.02.22	1	0	0	7		Radio Fly
14	Timinsiriap	Timinsiriap	301	310		259	68	134		2	0	0	39		Radio Fly
		Timinsiriap	159	139	Kiunga DHO	142	35	72	17.02.22	1	0	0	35		Radio Fly
		Twansawanai	142	171	Kiunga DHO	117	33	62	17.02.22	1	0	0	4		Radio Fly
15	Kukujaba	Kukujaba	955	542		550	91	277		2	2	0	2		
		Kukujaba	425	324	Membok HC	322	60	166	07.02.22	1	1	0	0		Fly FM
		Gibagaip	530	218	Membok HC	228	31	111	07.02.22	1	1	0	2		Fly FM
16	Membok	Karemgo (Gimagaip)	761	627		560	121	303		2	1	0	10		
		Karemgo (Gimagaip)	491	309	Membok HC	305	67	163	08.02.22	1	0	0	8		Fly FM
		Membok	270	319	Membok HC	255	54	140	08.02.22	1	1	0	2		Fly FM
17	Erekta	Erekta	268	104		241	47	127		1	0	0	0		
		Erekta	268	104	Kiunga DHO	241	47	127	19.02.22	1	0	0	0		Radio Fly
18	Moian	Moian (Lulaua)	796	665		848	120	432		3	0	0	0		Radio Fly
		Moian (Lulaua)	590	459	Kiunga DHO	540	84	275	09.03.22	1	0	0	0		Radio Fly
		Kawok	206	206	Kiunga DHO	228	11	117	09.03.22	1	0	0	0		Radio Fly
		Kengiobit		NEW	Kiunga DHO	80	25	40	15.03.22	1	0	0	0		Radio Fly
19	Komopkin	Komopkin	534	477		393	64	199		1	1	0	46		Radio Fly
		Komopkin	534	477	Kiunga DHO	393	64	199	24.02.22	1	1	0	46		Radio Fly
20	Menumsore	Menumsore	450	506		988	160	496		2	2	0	96		
		Menumsore	378	368	Rumginae Hos	870	139	437	15.02.22	1	1	0	96		Extended borders to Rumginae so majority of the population were surveyed by this village
		Tope	72	138	Rumginae Hos	118	21	59	15.02.22	1	1	0	0		Road
21	Miasomnai	Miamsonai	404	460		472	81	240		1	1	0	0		
		Miamsonai	404	460	Rumginae Hos	472	81	240	14.02.22	1	1	0	0		Road
22	Tiomnai	Tiomnai No.1	730	892		796	131	398		2	2	2	34		
		Tiomnai No.1	650	505	Kiunga DHO	398	63	202	23.02.22	1	1	1	8		Radio Fly
		Tiomnai No.2	80	387	Kiunga DHO	398	68	196	23.02.22	1	1	1	26		Radio Fly
23	Konkonda	Konkonda	252	195		96	19	50		1	1	0	0		Radio Fly
		Konkonda	252	195	Kiunga DHO	96	19	50	26.02.22	1	1	0	0		Radio Fly
24	Yulawas	Yulawas	276	73		221	40	115		1	1	0	0		Radio Fly
		Yulawas	276	73	Kiunga DHO	221	40	115	09.03.22	1	1	0	0		Radio Fly
25	Diabi	Diabi	336	281		272	56	139		3	0	0	0		Radio Fly
		Diabi	204	88	Kiunga DHO	79	17	42	11.03.22	1	0	0	0		Radio Fly
		Kominai	58	55	Kiunga DHO	90	15	47	12.03.22	1	0	0	0		Radio Fly
		Kanai	74	138	Kiunga DHO	103	24	50	12.03.22	1	0	0	0		Radio Fly

LLG	WARD	VILLAGE	Estimated 2021 Population Based 2000 On Census	Estimated 2021 Population Based On 2018 Survey	Health Centre	Population Surveyed	House Holds Surveyed	Nets Issued	Date Of Distribution	Villages	Digicel	Bmobile	Houses With Radios	Radio Networks	Comments
26	Dabike		646	994		768	135	387		3	2	0	12	Radio Fly	
		Dabike	140	260	Kiunga DHO	193	39	99	22.02.22	1	1	0	0	Radio Fly	Boat
		Monaya	235	387	Kiunga DHO	191	34	99	22.02.22	1	1	0	12	Radio Fly	Boat
		Kmom	270	347	Kiunga DHO	384	62	189	22.02.22	1	0	0	0	Radio Fly	Boat
27	Ieran		192	155		211	28	104		1	0	0	22	Radio Fly	Boat
		Ieran	192	155	Kiunga DHO	211	28	104	26.02.22	1	0	0	22	Radio Fly	Boat
28	logi		1,040	804		744	129	374		1	1	0	51	Radio Fly	
		Yogi	1,040	804	Kiunga DHO	744	129	374	04.03.22	1	1	0	51	Radio Fly	Boat
29	Ralangre		598	639		535	89	264		2	2	0	3		
		Ralangre	506	589	Rumginae Hos	476	79	235	14.02.22	1	1	0	0		Road
		Kwaso	93	51	Rumginae Hos	59	10	29	14.02.22	1	1	0	3		Road
30	Tamifen		219	245		221	39	112		2	0	0	12		
		Tamipen	157	185	Kiunga DHO	158	28	80	17.02.22	1	0	0	11	Radio Fly	Boat
		Hupen	62	60	Kiunga DHO	63	11	32	17.02.22	1	0	0	1	Radio Fly	Boat
31	Refugee S'ment		7,936	2,475		2,318	544	1,200		24	15	0	0		
		Mekobin & Paramundi Camp 12	60	0	lowara HC	34	17	21	13.02.22	1	1	0	0	FM Kiunga	Boat/Tractor/Trek
		Korana	68	0	lowara HC					1					Included Under Kuiu
		Rampsite (Guria Camp)	1,188	0	lowara HC					1					Included Under Kuiu
		Atkamba	1,032	621	lowara HC	611	79	326	09.02.22	1	1	0	0	FM Kiunga	Road/Trek
		Black Wara	89	41	lowara HC	227	37	116	12.02.22	1	1	0	0	FM Kiunga	Road/Trek
		Dome 1	111	137	lowara HC	91	22	48	10.02.22	1	1	0	0	FM Kiunga	Road/Trek
		lowara	217	96	lowara HC	105	43	59	13.02.22	1	1	0	0	FM Kiunga	Road
		Komokpin	895	427	lowara HC	244	67	124	12.02.22	1	1	0	0	FM Kiunga	Road/Trek
		Niogamban	1,975	205	lowara HC					1					Included Under Black Wara
		Yapsie	12	91	lowara HC	125	43	62	12.02.22	1	1	0	0	FM Westerr	Road/Trek
		Lake Murray Corner	167	200	lowara HC					1					People left the camp and went back home
		Debepari Corner	58	45	lowara HC	223	50	116	13.02.22	1	1	0	0	Fm Westerr	Road/Trek
		Wara Stone	305	93	lowara HC	28	11	14	09.02.22	1	1	0	0	Fm Westerr	Road/Trek
		Dome 2	146	0	lowara HC					1					Included Under Dome 1
		Wamena 2	39	71	lowara HC					1					Included Under Wamena 1
		Yogi	97	23	lowara HC	22	5	11	10.02.22	1	1	0	0	Fm Westerr	Road/Trek
		Wamena 1	85	0	lowara HC	53	11	25	10.02.22	1	1	0	0	Fm Westerr	Road/Trek
		Membaramo	33	0	lowara HC					1					People left the camp
		Tarakbits	198	86	lowara HC	72	33	34	11.02.22	1	1	0	0	Fm Westerr	Road/Trek
		Kungim 2	338	0	lowara HC					1					Included Under Kungim 1
		Kungim 1	136	197	lowara HC	193	41	97	11.02.22	1	1	0	0	Fm Westerr	Road/Trek
		Kuiu	685	143	lowara HC	229	68	114	12.02.22	1	1	0	0	Fm Westerr	Road/Trek
		Bamboo Corner		NEW	lowara HC	61	17	33	09.02.22	1	1	0	0	Fm Westerr	Road
32	Refugee S'ment			2,369		2,224	428	1,049		6	1	0	0		
		Yot		291	Kiunga DHO	238	51	115	10.03.22	1	0	0		Radio Fly	Boat
		Maprupan		246	Kiunga DHO	170	28	48	10.03.22	1	1	0		Radio Fly	Boat
		Niogamban		1,026	Kiunga DHO	928	170	474	09.03.22	1	0	0		Radio Fly	Boat
		Kuiu		503	Kiunga DHO	435	80	189	09.03.22	1	0	0		Radio Fly	Boat
		Kaikok		303	Kiunga DHO	446	97	220	10.03.22	1	0	0		Radio Fly	Boat
		Ambutwin		0	Kiunga DHO	7	2	3	10.03.22	1	0	0		Radio Fly	Boat
				0											
		KUINGA URBAN	17,115	28,092		26,001	4,187	13,127		49	49	49	2,977	49	
		Kiunga Urban	17,115	0											
		OTML Wharf-Flyside S	1,341	0	Kiunga DHO2										Rezoned
		Dominic Tari Hill Polico	1,653	0	Kiunga DHO2										Rezoned
		Philip Corner-Monfort	1,401	0	Kiunga DHO2										Rezoned
		Airport	163	0	Kiunga DHO2										Rezoned
		Monfort Boys Town &	444	0	Kiunga DHO2										Rezoned
		Post Office - Ningerum	510	0	Kiunga DHO2										Rezoned
		Barracks Rd - United C	642	0	Kiunga DHO2										Rezoned
		OTML Compound	557	0	Kiunga DHO2										Rezoned
		Hospital-High School	869	0	Kiunga DHO2										Rezoned
		Last/Sawmill/Gregas/F	3,111	0	Kiunga DHO2										Rezoned
		Smike/Katari/Gii Cnr S	314	0	Kiunga DHO2										Rezoned
		Voc/School - Sales S'r	1,442	0	Kiunga DHO2										Rezoned
		Hawenai & Timoknai S	1,527	0	Kiunga DHO2										Rezoned
		Mission/Alice/Ulawas C	2,142	0	Kiunga DHO2										Rezoned
		Boys Town - 7 & Rubb	1,001	0	Kiunga DHO2										Rezoned
1				4,199		3,938	625	2,006		7	7	7	562		
		Airport & DCA Compound/Mepu	798		Kiunga DHO2	743	129	376	02.03.22	1	1	1	110	Radio Fly	Road
		Salamat Kona/Sawmill Kona	287		Kiunga DHO2	320	51	163	03.03.22	1	1	1	41	Radio Fly	Road
		Mission Kona/Catholic Mission C	667		Kiunga DHO2	578	84	303	03.03.22	1	1	1	84	Radio Fly	Road
		Alice Kona	478		Kiunga DHO2	433	60	214	03.03.22	1	1	1	59	Radio Fly	Road
		Yulawas Kona/MB Kona/Philip K	678		Kiunga DHO2	780	133	396	03.03.22	1	1	1	121	Radio Fly	Road
		Fly Side 1 & 2	784		Kiunga DHO2	703	101	352	04.03.22	1	1	1	88	Radio Fly	Road
		Police Compound/Tari Hill/Town	507		Kiunga DHO2	381	67	202	03.03.22	1	1	1	59	Radio Fly	Road
2				5,330		5,099	831	2,587		8	8	8	475		
		Gwari Prison Camp/7 Kona/Rubb	1,285		Kiunga DHO2	1,573	250	783	07.03.22	1	1	1	133	Radio Fly	Road
		St. Gabriel THS/Peter Torot Cent	340		Kiunga DHO2	97	34	55	10.03.22	1	1	1	0	Radio Fly	Road
		Kumbit Kona 1 & 2	644		Kiunga DHO2	967	166	489	07.03.22	1	1	1	0	Radio Fly	Road
		LOTIC Compound	385		Kiunga DHO2	394	74	206	06.03.22	1	1	1	74	Radio Fly	Road
		Broken Hill/Komoko Kona/Michea	655		Kiunga DHO2	549	99	280	06.03.22	1	1	1	97	Radio Fly	Road
		KFD/Benard Moses/Works Comp	700		Kiunga DHO2	564	64	282	06.03.22	1	1	1	54	Radio Fly	Road
		United Church/Down Parama Kor	720		Kiunga DHO2	466	73	241	03.03.22	1	1	1	48	Radio Fly	Road
		105 Street/Lagoon Kona	602		Kiunga DHO2	489	71	251	06.03.22	1	1	1	69	Radio Fly	Road
3				4,807		4,194	677	2,117		7	7	7	462		
		Green Tree & Star West/TKI Com	819		Kiunga DHO2	135	27	70	11.03.22	1	1	1		Radio Fly	Road
		FOB Compound/Salamat Kona/C	926		Kiunga DHO2	1,239	188	655	09.03.22	1	1	1	140	Radio Fly	Road

LLG	WARD	VILLAGE	Estimated 2021 Population Based 2000 On Census	Estimated 2021 Population Based On 2018 Survey	Health Centre	Population Surveyed	House Holds Surveyed	Nets Issued	Date Of Distribution	Villages	Digicel	Bmobile	Houses With Radios	Radio Networks	Comments
		Kungim Kona/Tiganibi Kona	613	613	Kiunga DHO2	756	116	382	06.03.22	1	1	1	91	Radio Fly	Road
		Gretutu School/Gretubu Kona	543	543	Kiunga DHO2	510	74	250	08.03.22	1	1	1	0	Radio Fly	Road
		Last Kona	776	776	Kiunga DHO2	638	110	319	01.03.22	1	1	1	78	Radio Fly	Road
		Nemo Kona/Kwere Swamp Kona	468	468	Kiunga DHO2	288	52	145	08.03.22	1	1	1	44	Radio Fly	Road
		Highway Dev. Kona/Last Coner E	661	661	Kiunga DHO2	628	110	296	06.03.22	1	1	1	109	Radio Fly	Road
4			5,524	5,524		5,700	951	2,858		9	9	9	772		
		7KM Kona/Miahore Kona/Samaga	987	987	Kiunga DHO2	1,270	178	636	26.02.22	1	1	1	171	Radio Fly	Road
		Nosu Kona/Pistol Kona	441	441	Kiunga DHO2	504	79	242	26.02.22	1	1	1	79	Radio Fly	Road
		Haewenai Kona	474	474	Kiunga DHO2	477	100	253	26.02.22	1	1	1	95	Radio Fly	Road
		Tmoknai Kona	701	701	Kiunga DHO2	917	146	443	26.02.22	1	1	1	106	Radio Fly	Road
		Soimokwankia Kona	271	271	Kiunga DHO2	420	100	230	26.02.22	1	1	1	50	Radio Fly	Road
		Gregas Kona	705	705	Kiunga DHO2	769	130	375	27.02.22	1	1	1	105	Radio Fly	Road
		Warap Kona/Sam Snowal Kona/H	1,009	1,009	Kiunga DHO2	358	53	180	27.02.22	1	1	1	53	Radio Fly	Road
		Hongas Kona /Hmyasomi Kona/H	936	936	Kiunga DHO2	923	155	468	27.02.22	1	1	1	103	Radio Fly	Road
		Kata Kona	0	0	Kiunga DHO2	62	10	31	27.02.22	1	1	1	10	Radio Fly	Road
5			3,623	3,623		3,056	454	1,557		8	8	8	377		
		Nick Buni Compound/Dark Street	631	631	Kiunga DHO2	408	56	210	02.03.22	1	1	1	52	Radio Fly	Road
		Sare Kona	693	693	Kiunga DHO2	1,352	199	689	02.03.22	1	1	1	183	Radio Fly	Road
		Pare/Nomad Compound	697	697	Kiunga DHO2	114	22	62	02.03.22	1	1	1	0	Radio Fly	Road
		River Side Compound/Gangari C	420	420	Kiunga DHO2	57	13	30	02.03.22	1	1	1	0	Radio Fly	Road
		Balimo Market Compound	319	319	Kiunga DHO2	322	73	159	02.03.22	1	1	1	58	Radio Fly	Road
		WP Compound/Tank Point	346	346	Kiunga DHO2	145	24	77	02.03.22	1	1	1	24	Radio Fly	Road
		Paul Wasi Kona/ECPNG	151	151	Kiunga DHO2	220	25	108	02.03.22	1	1	1	18	Radio Fly	Road
		Water Front Kona	367	367	Kiunga DHO2	438	42	222	02.03.22	1	1	1	42	Radio Fly	Road
6			4,610	4,610		4,014	649	2,002		10	10	10	329		
		Gatahari Kona	164	164	Kiunga DHO2	165	26	83	01.03.22	1	1	1	23	Radio Fly	Road
		Smike Kona	476	476	Kiunga DHO2	372	62	187	01.03.22	1	1	1	26	Radio Fly	Road
		Nimo Kona/Gi Kona	272	272	Kiunga DHO2	108	18	53	01.03.22	1	1	1	17	Radio Fly	Road
		Cassowary Compound	548	548	Kiunga DHO2	543	80	274	01.03.22	1	1	1	88	Radio Fly	Road
		TE Compound/Green Tee Compd	726	726	Kiunga DHO2	548	118	276	01.03.22	1	1	1	107	Radio Fly	Road
		CRC Compound/New Location	723	723	Kiunga DHO2	204	27	90	01.03.22	1	1	1	1	Radio Fly	Road
		Parama Kona/Main Oval Compou	362	362	Kiunga DHO2	435	60	217	01.03.22	1	1	1	3	Radio Fly	Road
		OTML Compound/OTDL Compou	251	251	Kiunga DHO2	278	49	145	01.03.22	1	1	1	0	Radio Fly	Road
		Hospital Compound/Kokoloso Co	668	668	Kiunga DHO2	950	145	468	01.03.22	1	1	1		Radio Fly	Road
		Kiunga Secondary School/Kwere	419	419	Kiunga DHO2	411	64	209	06.03.22	1	1	1	64	Radio Fly	Road
			0	0											
NINGERUM RURAL			27,578	25,157		23,665	4,271	12,258		91	88	2	990	11	
1	Ambaga		978	777		488	103	267		4	4	0	0		
	Ambaga		514	410	Ningerum HC	198	44	105	14.02.22	1	1	0	0		Road/Boat/ x1 bk
	Birimkamba		118	190	Ningerum HC	168	29	89	15.02.22	1	1	0	0		Road/Boat/ x1 bk
	Kungembit		256	136	Ningerum HC	93	22	52	15.02.22	1	1	0	0		Road/Boat/ x1 bk
	Karandimok		91	42	Ningerum HC	29	8	21	15.02.22	1	1	0	0		Road/Boat/ x1 bk
2	Kungim		1,219	1,207		945	189	523		1	1	0	0		
	Kungim		1,219	1,207	Ningerum HC	945	189	523	15.02.22	1	1	0	0		Road/Boat/Trek x4 bks
3	Tengkim		821	403		394	142	240		4	4	0	0		
	Bikim		215	80	Ningerum HC	69	22	41	17.02.22	1	1	0	0		Road/Boat/4-5 Hrs Trek/ x1 bk
	Digam		138	42	Ningerum HC	53	24	34	19.02.22	1	1	0	0		Road/Boat/4-5 Hrs Trek/ x1 bk
	Tengkim		274	206	Ningerum HC	203	75	124	17.02.22	1	1	0	0		Road/Boat/4-5 Hrs Trek/x2 bks
	Wombon		194	75	Ningerum HC	69	21	41	17.02.22	1	1	0	0		Road/Boat/4-5 Hrs Trek/x1 bk
4	Hukim		799	488		468	106	265		3	3	0	0		
	Hukim		487	407	Ningerum HC	201	43	116	16.02.22	1	1	0	0		1 Hr Trek/boat/ x1 bk
	Minipon		312	82	Ningerum HC	95	17	52	16.02.22	1	1	0	0		1 Hr Trek/boat/ x1 bk
	Yountau No.2		NEW	NEW	Ningerum HC	172	46	97	18.02.22	1	1	0	0		1 Hr Trek/boat/ x1 bk
5	Tarakbits		1,158	774		617	145	321		3	1	0	2		
	Binkawok		363	185	Tarakbits HC	168	37	85	08.02.22	1	0	0	0		1 hr 30 mins
	Betenok		279	184	Tarakbits HC	150	41	83	06.02.22	1	0	0	0		3 hrs by boat
	Tarakbits		516	405	Tarakbits HC	299	67	153	08.02.22	1	1	0	2		5 mins
6	Ogun		1,094	364		294	50	146		2	2	0	0		
	Bankim No.2		431	163	Tarakbits HC	141	22	71	10.02.22	1	1	0	0		3 hrs trek
	Ogun		662	201	Tarakbits HC	153	28	75	10.02.22	1	1	0	0		4 hrs trek
	Bigo		0	0	Tarakbits HC										Non Existent (Villagers moved out)
7	Kwikim		982	268		166	33	89		1	1	0	0		
	Ambre		221	222	Tarakbits HC	166	33	89	13.02.22	1	1	0	0		5 hrs trek
	Kwikam		437	0	Tarakbits HC										Same village as Ambre (Oktarim)
	Swebon		324	46	Tarakbits HC										Non Existent (Villagers moved out)
8	Bankim No.1		636	848		838	144	423		5	4	2	0		
	Bankim No.1		107	50	Tabubil Hos	180	33	86	19.02.22	1	1	1	0	Radio Fly	1 Day Trek
	Bulipkawok		146	85	Ningerum HC	68	17	42	18.02.22	1	1	0	0		1 Day Trek/ x1 bk
	Derongo		165	539	Tabubil Hos	499	75	243	19.02.22	1	1	1	0	Radio Fly	1 Day Trek
	Duonbonkim		95	125	Ningerum HC					1					Included Under Bankim No 1
	Yongtau No.1		122	50	Ningerum HC	91	19	52	18.02.22	1	1	0	0		1 Day Trek/ x1 bk
9	Wulimkantgo		959	1,019		1,015	170	509		4	4	0	0		
	Bolewogam		252	279	Tabubil Hos	267	31	131	20.02.22	1	1	0	0	Radio Fly	Road
	Haidawogam		260	300	Sisimakam AP	285	61	150	16.02.22	1	1	0	0	NBC WP	Boat/Trek
	Mongolavuram		281	203	Ningerum HC	195	38	88	12.03.22	1	1	0	0		Road/x1bk
	Wulimkanatgo		167	237	Ningerum HC	268	40	140	12.03.22	1	1	0	0		Boat/Trek
10	Kolebon		545	636		434	79	236		3	3	0	0		
	Bumbin No.1		182	342	Ningerum HC	195	34	106	18.02.22	1	1	0	0		Boat/Trek/ x1 bk
	Kolebon		161	182	Ningerum HC	140	27	75	18.02.22	1	1	0	0		Boat/Trek/ x1 bk
	Twinkwi		202	112	Ningerum HC	99	18	55	18.02.22	1	1	0	0		Boat/Trek x1 bk
11	Wogam		569	580		359	57	197		2	2	0	0		
	Wogam		392	303	Ningerum HC	219	33	123	18.02.22	1	1	0	0		Boat/Trek/ x1 bk

LLG	WARD	VILLAGE	Estimated 2021 Population Based 2000 On Census	Estimated 2021 Population Based On 2018 Survey	Health Centre	Population Surveyed	House Holds Surveyed	Nets Issued	Date Of Distribution	Villages	Digicel	Bmobile	Houses With Radios	Radio Networks	Comments
		Wuwungo	177	277	Ningerum HC	140	24	74	18.02.22	1	1	0	0		Boat/Trek/ x1 bk
12	Hoirenkia		1,366	1,436		1,516	284	807		5	5	0	0		
		Hiorenkia	285	316	Ningerum HC	316	66	166	13.03.22	1	1	0	0		Road/ x2 bks
		Hosanai	237	212	Ningerum HC	128	29	66	12.03.22	1	1	0	0		Road/ x1 bk
		Tapko	367	495	Ningerum HC	543	98	279	12.03.22	1	1	0	0		Road/ x2 bks
		Gisa	196	168	Ningerum HC	209	42	116	12.03.22	1	1	0	0		Road/ x1 bk
		Awın Tamaro	281	246	Ningerum HC	320	49	180	13.03.22	1	1	0	0		Road/ x1 bk
13	Sisimakam		1,657	1,892		1,691	289	850		3	3	0	208		
		Sisimakam (Apram)	846	992	Sisimakam AP	945	152	482	16.02.22	1	1	0	91	NBC WP	Road
		Kwiloknai	491	778	Sisimakam AP	545	100	270	16.02.22	1	1	0	94	NBC WP	Road
		Sapire	320	121	Sisimakam AP	201	37	98	16.02.22	1	1	0	23	NBC WP	Road
14	Mohomtienai		1,164	1,136		1,278	242	638		4	4	0	198		
		Brunai Village Group	173	91	Sisimakam AP	128	21	71	16.02.22	1	1	0	91	NBC WP	1 Day Trek
		Mohomtienai	297	414	Sisimakam AP	366	66	180	15.02.22	1	1	0	20	NBC WP	1 Day Trek
		Ripnai	425	322	Sisimakam AP	494	96	241	15.02.22	1	1	0	63	NBC WP	1 Day Trek
		Saisu Kurume	268	309	Sisimakam AP	290	59	146	15.02.22	1	1	0	24	NBC WP	1 Day Trek
15	Runai		534	462		584	81	301		2	2	0	0		
		Runai	111	293	Hawanai SHC	389	49	192	12.02.22	1	1	0	0		5 Hrs.Trek
		Horeihore	423	169	Hawanai SHC	195	32	109	10.02.22	1	1	0	0		6 Hrs Trek
16	Hawenai		1,467	1,157		1,277	224	671		6	6	0	0		
		Hawanai	396	371	Hawanai SHC	375	68	194	12.02.22	1	1	0	0		20 mins. Walking Dist
		Kmenai	382	330	Hawanai SHC	345	53	174	11.02.22	1	1	0	0		20 mins. Walking Dist
		Hosomrae	109	101	Hawanai SHC	62	15	35	11.02.22	1	1	0	0		40 mins. Walking Dist
		Momtinai	140	112	Hawanai SHC	116	18	66	09.02.22	1	1	0	0		10 mins Walking Dist
		Surine	439	243	Hawanai SHC	226	41	120	10.02.22	1	1	0	0		1 hr. 30 mins. Trek
		Gisa		NEW	Hawanai SHC	153	29	82	11.02.22	1	1	0	0		5 Hrs.Trek
17	Tmoknai		1,261	916		547	89	290		3	3	0	0		
		Somaikwankia	349	94	Hawanai SHC	115	22	59	10.02.22	1	1	0	0		3 hrs. Trek
		Tminhore	274	188	Hawanai SHC	140	23	74	12.02.22	1	1	0	0		4 hrs. Trek
		Timoknai	638	634	Hawanai SHC	292	44	157	12.02.22	1	1	0	0		3 hrs.Trek
18	Sonai		1,226	616		606	94	307		3	3	0	37		
		Menumgrup	584	100	Rumginae Hos2	135	25	72	12.02.22	1	1	0	19		1hr 30mins by dinghi and then 30 mins Trek
		Sonai	404	325	Rumginae Hos2	340	49	169	12.02.22	1	1	0	10		1hr 30mins by dinghi
		Miahore	237	191	Rumginae Hos2	131	20	66	12.02.22	1	1	0	8		2hr by dinghi
19	Pampenai		1,554	1,818		1,751	303	947		8	8	0	0		
		Hosokumgu	165	258	Ningerum HC	186	37	96	18.02.22	1	1	0	0		Road/ x1 bk
		Nonengire	369	304	Hawanai SHC	323	43	183	10.02.22	1	1	0	0		4 hours trek/boat
		Siringire	124	100	Ningerum HC	89	13	50	18.02.22	1	1	0	0		Road/ x1 bk
		Wanginai No.1	225	86	Ningerum HC	106	18	60	18.02.22	1	1	0	0		Road/ x1 bk
		Wanginai No.2	142	471	Ningerum HC	164	37	90	18.02.22	1	1	0	0		Road/ x1 bk
		Pampenai No.1	260	90	Ningerum HC	183	30	101	18.02.22	1	1	0	0		Road/ x1 bk
		Pampenai No.2	196	272	Ningerum HC	272	49	146	18.02.22	1	1	0	0		Road/ x1 bk
		Alice Pit	72	236	Ningerum HC	428	76	221	16.02.22	1	1	0	0		Road/ x2 bks
20	Yenkenai		1,556	1,204		1,081	190	540		4	4	0	107		
		Yenkenai	266	250	Matkomrae SHC	310	57	157	14.02.22	1	1	0	17		Road
		Kranai	506	314	Matkomrae SHC	188	29	91	14.02.22	1	1	0	16		Road
		Gumunai	283	248	Matkomrae SHC	210	36	108	14.02.22	1	1	0	36		Road
		Mimingire	501	391	Matkomrae SHC	373	68	184	14.02.22	1	1	0	38		Road
21	Matkomrae		1,283	1,190		1,133	204	551		4	4	0	126		
		Kasrenai	481	439	Matkomrae SHC	385	73	184	15.02.22	1	1	0	31		Road
		Kikisrame	173	152	Matkomrae SHC	163	31	80	15.02.22	1	1	0	16		Road
		Matkomrae	452	435	Matkomrae SHC	431	71	212	15.02.22	1	1	0	69		Road
		Dmesuke	177	164	Matkomrae SHC	154	29	75	15.02.22	1	1	0	10		Road
22	Dande		1,444	1,276		1,198	241	605		5	5	0	192		
		Dande No.1	270	180	Matkomrae SHC	154	31	82	13.02.22	1	1	0	31		Road
		Dande No.2	155	291	Matkomrae SHC	245	57	118	13.02.22	1	1	0	54		Road
		Grehosore	464	282	Matkomrae SHC	232	58	124	13.02.22	1	1	0	35		Road
		Ipoknai	270	231	Matkomrae SHC	240	36	114	13.02.22	1	1	0	26		Road
		Hopanai	285	292	Matkomrae SHC	327	59	167	13.02.22	1	1	0	46		Road
23	Mianrae		1,828	1,271		1,142	216	577		4	4	0	120		
		Kwiapae	497	284	Matkomrae SHC	245	42	122	12.02.22	1	1	0	25		Road
		Bige	283	224	Matkomrae SHC	188	33	96	12.02.22	1	1	0	31		Road
		Miahrae	444	377	Matkomrae SHC	348	67	174	12.02.22	1	1	0	63		Road
		Senamrae	605	386	Matkomrae SHC	361	74	185	12.02.22	1	1	0	1		Road
24	Ningerum Station		1,479	3,418		3,843	596	1,958		8	8	0	0		
		Ningerum Station & S	811	827	Ningerum HC	895	136	462	14.03.22	1	1	0	0		Road/ x4 bks
		Ningerum Tamaro	669	452	Ningerum HC	556	94	277	13.03.22	1	1	0	0		Road/ x2 bks
		High School		224	Ningerum HC	290	40	147	14.03.22	1	1	0	0		Road/ x1 bk
		FO Corner		697	Ningerum HC	777	114	403	13.03.22	1	1	0	0		Road/ x3 bks
		Menumgrup		352	Ningerum HC	540	82	255	14.03.22	1	1	0	0		Road/ x2 bks
		Bikim Corner		336	Ningerum HC	190	35	98	13.03.22	1	1	0	0		Road/ x1 bk
		Hukim Corner		332	Ningerum HC	242	50	134	15.03.22	1	1	0	0		Road/ x1 bk
		Alice Corner		200	Ningerum HC	353	45	182	13.03.22	1	1	0	0		Road/ x1 bk
				0											
OLSOBIP RURAL			7,768	5,621		5,457	999	2,900		35	29	0	165	22	
1	Bolongong		213	93		417	50	207		1	1	0	0		
		Bolongong	213	93	Migalsimbip AP	417	50	207	20.02.22	1	1	0	0	Radio Fly	Trek
2	Kongapip		658	338		200	30	108		3	2	0	21		
		Kongabip	198	175	Olsabip SHC	121	19	66	28.02.22	1	1	0	13	IBC North F	Air drop off/Not trekking area
		Matikin	297	163	Olsabip SHC	79	11	42	02.03.22	1	1	0	8	IBC North F	Air drop off/Not trekking area
		Mission Corner	163	0	Olsabip SHC					1					Included Under Olsabip Station
3	Laubip		458	377		401	66	206		2	2	0	37		
		Laubip	318	288	Olsabip SHC	234	37	122	28.02.22	1	1	0	11	IBC North F	Air drop off/Not trekking area
		Olsobip Station	140	89	Olsabip SHC	167	29	84	28.02.22	1	1	0	26	IBC North F	Air drop off/Not trekking area

LLG	WARD	VILLAGE	Estimated 2021 Population Based 2000 On Census	Estimated 2021 Population Based On 2018 Survey	Health Centre	Population Surveyed	House Holds Surveyed	Nets Issued	Date Of Distribution	Villages	Digicel	Bmobile	Houses With Radios	Radio Networks	Comments
4	Imigapip		462	211		207	48	133		2	2	0	0		
		Imigabip	217	126	Golgobip SHC	111	25	75	28.02.22	1	1	0	0		Trek
		Tamtem	246	85	Golgobip SHC	96	23	58	28.02.22	1	1	0	0		Trek
5	Duwinim		291	323		260	45	143		2	2	0	0		
		Duwinum	291	168	Migalsimbip AP	140	24	68	20.02.22	1	1	0	0	Radio Fly	Trek
		Duwinum 2		155	Golgobip SHC	120	21	75	27.02.22	1	1	0	0		Trek
6	Golgobip		646	356		350	65	192		3	3	0	0		
		Golgobip	202	84	Golgobip SHC	79	16	43	28.02.22	1	1	0	0		Trek
		Wagambip	264	164	Golgobip SHC	150	26	83	28.03.22	1	1	0	0		Trek
		Tunget	180	108	Golgobip SHC	121	23	66	28.02.22	1	1	0	0		Trek
7	Bolibip		543	273		186	48	98		2	2	0	0		
		Bolibip	250	128	Bolibip AP	161	40	85	02.03.22	1	1	0	0		Trek
		Monfort Catholic Missi	293	146	Bolibip AP	25	8	13	02.03.22	1	1	0	0		Trek
8	Darabik		369	234		205	32	122		2	2	0	0		
		Serebip	140	97	Bolibip AP	77	16	48	03.03.22	1	1	0	0		Trek
		Simintambip	229	137	Bolibip AP	128	16	74	03.03.22	1	1	0	0		Trek
9	Duminak		536	472		467	72	240		3	3	0	41		
		Dumonak	25	90	Olsabip SHC	96	15	48	01.03.22	1	1	0	13	IBC North F	Air drop off/Not trekking area
		Kiangabip	293	168	Olsabip SHC	209	29	106	03.03.22	1	1	0	13	IBC North F	Air drop off/Not trekking area
		Kaimfurabip	219	214	Olsabip SHC	162	28	86	01.03.22	1	1	0	15	IBC North F	Air drop off/Not trekking area
10	Biangabip		708	603		506	83	283		2	2	0	0		
		Biangabip	565	409	Biangabip AP	315	57	179	14.03.22	1	1	0	0	IBC North fl	Helicopter/Trek
		Swetigin	142	194	Biangabip AP	191	26	104	13.03.22	1	1	0	0	IBC North fl	Helicopter/Trek
11	Selbang		501	408		345	64	188		2	0	0	0		
		Selbang	343	274	Selbang AP	249	42	134	02.03.22	1	0	0	0		Helicopter/Trek
		Dimtikin (Timtikin)	159	133	Selbang AP	96	22	54	02.03.22	1	0	0	0		Helicopter/Trek
12	Seltamin		588	409		361	62	204		2	2	0	11		
		Seltamin	318	240	Seltamin AP	199	38	120	07.08.22	1	1	0	0	IBC North fl	Helicopter/Trek
		Baktamin	270	169	Olsabip SHC	162	24	84	07.03.22	1	1	0	11	IBC North F	Helicopter/Only helicopter drop off
13	Fagobip		276	173		197	40	87		2	2	0	0		
		Fagobip	173	133	Seltamin AP	172	33	75	07.03.22	1	1	0	0	0	Helicopter/Trek
		Bilai	103	40	Seltamin AP	25	7	12	08.03.22	1	1	0	0	0	Helicopter/Trek
14	Saganabip		351	277		315	73	144		1	1	0	0		
		Saganabip	351	277	Seltamin AP	315	73	144	08.03.22	1	1	0	0	0	Helicopter/Trek
15	Yasap		650	527		525	120	257		2	1	0	0		
		Yasap	398	304	Seltamin AP	307	70	146	08.03.22	1	1	0	0	0	Helicopter/Trek
		Waniabil	252	223	Seltamin AP	218	50	111	07.03.22	1	0	0	0	0	Helicopter/Trek
16	Dahamo		518	548		515	101	288		4	2	0	55		
		Deberebip	138	137	Dahamo AP	138	30	79	18.02.22	1	1	0	20	NBC	Boat/Trek
		Dahamo	175	202	Dahamo AP	208	43	119	15.02.22	1	1	0	26	NBC	Boat/Trek
		Aedro	130	132	Dahamo AP	122	21	65	17.02.22	1	0	0	6	NBC	Boat/Trek
		Gaiyabi	74	77	Dahamo AP	47	7	25	15.02.22	1	0	0	3	NBC	Boat/Trek
				0											
STAR MOUNTAINS RURAL			25,045	23,447		21,846	3,027	10,780		20	19	13	252	18	
1	Atemkit		237	384		362	34	171		1	1	1	0		
		Atemkit	237	384	Tabubil Hos	362	34	171	19.02.22	1	1	1	0	Radio Fly	Road
2	Kaworabip		227	341		458	41	223		1	1	1	0		
		Kaworabip	227	341	Tabubil Hos	458	41	223	17.02.22	1	1	1	0	Radio Fly	Road
3	Bultem		1,176	1,199		1,273	172	636		1	1	1	0		
		Bultem	1,176	1,199	Tabubil Hos	1,273	172	636	17.02.22	1	1	1	0	Radio Fly	Road
4	Finalbin		1,269	679		750	100	350		1	1	1	80		
		Finalbin	1,269	679	Tabubil Hos	750	100	350	17.02.22	1	1	1	80	Radio Fly	Road
5	Wangbin		871	1,391		1,244	161	596		1	1	1	0		
		Wangbin	871	1,391	Tabubil Hos	1,244	161	596	08.03.22	1	1	1	0	Radio Fly	Road
6	Migalsimbip		1,032	1,397		713	101	350		1	1	0	0		
		Migalsimbip	1,032	1,397	Tabubil Hos	713	101	350	20.02.22	1	1	0	0	Radio Fly	Road
7	Niosikwi		607	273		293	50	144		1	1	0	0		
		Niosikwi	607	273	Tabubil Hos	293	50	144	19.02.22	1	1	0	0	Radio Fly	Trek
8	Ok Tedi Tau		343	254		212	55	112		1	1	0	0		
		Ok Tedi Tau	343	254	Tabubil Hos	212	55	112	19.02.22	1	1	0	0	Radio Fly	Trek
9	Kumkit		491	272		187	34	94		1	1	0	0		
		Kumkit	491	272	Tabubil Hos	187	34	94	19.02.22	1	1	0	0	Radio Fly	Trek
10	Ankits		231	0		191	33	97		1	1	0	0		
		Ankits	231	0	Tabubil Hos	191	33	97	19.02.22	1	1	0	0	Radio Fly	Trek
11	Kawentigin		305	291		303	50	151		1	1	0	0		
		Kawentigin	305	291	Tabubil Hos	303	50	151	17.02.22	1	1	0	0	Radio Fly	Road
12	Korokit		411	452		371	64	180		1	1	1	0		
		Korokit	411	452	Tabubil Hos	371	64	180	17.02.22	1	1	1	0	Radio Fly	Trek
13	Tabubil Town		17,846	16,515		15,489	2,132	7,676		8	7	7	172		
		Tabubil	883	0	Tabubil Hos										Re-zoned
		Tabubil	704	0	Tabubil Hos										Re-zoned
		Tabubil	574	0	Tabubil Hos										Re-zoned
		Tabubil	730	0	Tabubil Hos										Re-zoned
		Tabubil	406	0	Tabubil Hos										Re-zoned
		Tabubil	594	0	Tabubil Hos										Re-zoned
		Tabubil	706	0	Tabubil Hos										Re-zoned
		Tabubil	780	0	Tabubil Hos										Re-zoned
		Tabubil	378	0	Tabubil Hos										Re-zoned
		Tabubil	501	0	Tabubil Hos										Re-zoned
		Tabubil	718	0	Tabubil Hos										Re-zoned
		Tabubil	1,556	0	Tabubil Hos										Re-zoned
		Tabubil	2,410	0	Tabubil Hos										Re-zoned
		Tabubil	796	0	Tabubil Hos										Re-zoned
		Tabubil	759	0	Tabubil Hos										Re-zoned

LLG	WARD	VILLAGE	Estimated 2021 Population Based 2000 On Census	Estimated 2021 Population Based On 2018 Survey	Health Centre	Population Surveyed	House Holds Surveyed	Nets Issued	Date Of Distribution	Villages	Digicel	Bmobile	Houses With Radios	Radio Networks	Comments
		Laytown/Wangbin	873	0	Tabubil Hos										Re-zoned
		Tabubil	460	0	Tabubil Hos										Re-zoned
		Wangbin Settlement	3,648	0	Tabubil Hos										Re-zoned
		Tabubil	369	0	Tabubil Hos										Re-zoned
		Tabubil (zone 1)		629	Tabubil Hos	549	98	284	19.02.22	1	1	1	98	Radio Fly	Road
		Tabubil (zone 2)		666	Tabubil Hos	1,301	192	638	19.02.22	1	1	1	3	Radio Fly	Road
		Tabubil (zone 3)		789	Tabubil Hos	1,141	171	570	19.02.22	1	1	1	7	Radio Fly	Road
		Tabubil (zone 4)		1,861	Tabubil Hos	528	94	269	19.02.22	1	1	1	0	Radio Fly	Road
		Tabubil (zone 5 Dongas)		0	Tabubil Hos					1					Not Covered
		Laytown/Wangbin		4,847	Tabubil Hos	4,736	708	2,359	10.03.22	1	1	1			Road
		Wangbin Settlement		6,786	Tabubil Hos	6,062	709	2,973	07.03.22	1	1	1	64	Radio Fly	Road
		Yuk Creek		937	Tabubil Hos	1,172	160	583	17.02.22	1	1	1	0	Radio Fly	Road
				0											
		Nomad Rural	1,166	582		508	82	241		7	0	0	30	5	
		Ayedubi	726	255		119	17	53		3	0	0	12		
		Komokato	182	160	Komokato	119	17	53	16.02.22	1	0	0	12	NBC	Trek
		Aseyedubi	409	0	Komokato	0	0	0		1					Non-Existant
		Seseyebi	136	95	Komokato	0	0	0		1					Non-Existant
		Tinahai	287	194		164	30	86		2	0	0	14		
		Tinahae	177	129	Tobi	115	23	60	17.02.22	1	0	0	8	NBC	Trek
		Umuibi	109	65	Tobi	49	7	26	15.02.22	1	0	0	6	NBC	Trek
		Sinabi	153	133		225	35	102		2	0	0	4		
		Sisinabi	50	109	Tobi	82	14	37	16.02.22	1	0	0	2	NBC	Trek
		Tobi	103	24	Tobi	143	21	65	17.02.22	1	0	0	2	NBC	Trek

ANNEX TWO

**WESTERN PROVINCE
SOUTH FLY
POPULATION 2021
LLIN DISTRIBUTION SUMMARY SHEET**

LLG	WARD	VILLAGE	Estimated 2021 Population Based 2000 On Census	Estimated 2021 Population Based On 2018 Survey	Health Centre	Population Surveyed	House Holds Surveyed	Nets Issued	Date Of Distribution	Villages	Digicel	Bmoble	Houses With Radios	Radio Networks	Comments
SOUTH FLY DISTRICT			85,746	85,746		83,930	13,584	42,364		247	211	2	3,299	124	
DARU URBAN			23,833	24,039		23,597	3,182	12,079		41	37	0	1,686	37	
	Daru Town		23,833	24,039		23,597	3,182	12,079		41	37	0	1,686		
		Cameran Road	894	991	Daru DHO	921	131	441	28.02.22	1	1	0	116	FM/NBC	Road
		Tamate Street	783	186	Daru DHO					1					Included under Cameran Road
		Sec. 29 \ 31 \ 33 \ 34	1,393	325	Daru DHO					1					Included under Cameran Road
		Tompkins Street	1,041	349	Daru DHO	284	59	146	26.02.22	1	1	0	47	FM/NBC	Road
		Butterwort Street	735	924	Daru DHO					1					Included Under Tompkins Street
		Street 1	1,063	381	Daru DHO					1					Included under Karakara
		Bomana	1,496	1,705	Daru DHO	1,446	174	747	04.03.22	1	1	0	68	FM/NBC	Road
		Daru Seconady High School	787	211	Daru DHO	188	23	92	04.03.22	1	1	0	21	FM/NBC	Road
		Murrey Street	669	209	Daru DHO	844	90	428	06.03.22	1	1	0	90	FM/NBC	Road
		Ipisa 2 Corner	663	364	Daru DHO	500	68	256	01.03.22	1	1	0	36	FM/NBC	Road
		Sepe Corner	929	767	Daru DHO	451	58	222	01.03.22	1	1	0	24	FM/NBC	Road
		Tureture Coner	1,078	903	Daru DHO	958	116	534	01.03.22	1	1	0	76	FM/NBC	Road
		Samari Corner	719	845	Daru DHO	1,282	191	696	28.02.22	1	1	0	67	FM/NBC	Road
		Mabudawan Corner	505	505	Daru DHO	439	55	214	03.03.22	1	1	0	28	FM/NBC	Road
		Madame Corner	472	518	Daru DHO	470	50	226	02.03.22	1	1	0	7	FM/NBC	Road
		Wabada Corner	365	1,049	Daru DHO	619	82	298	02.03.22	1	1	0	36	FM/NBC	Road
		Giwari 1 Corner	341	440	Daru DHO	258	41	127	01.03.22	1	1	0	8	FM/NBC	Road
		Giwari 2 Corner	671	0	Daru DHO	150	24	73	01.03.22	1	1	0	3	FM/NBC	Road
		Gelam Tail Corner	153	597	Daru DHO	555	78	294	26.02.22	1	1	0	50	FM/NBC	Road
		Parama Corner	709	1,011	Daru DHO	854	96	407	27.02.22	1	1	0	58	FM/NBC	Road
		Ormo Sapuwo Corner	831	936	Daru DHO	720	116	344	27.02.22	1	1	0	18	FM/NBC	Road
		Ipsai 1 Corner	617	688	Daru DHO	440	75	250	27.02.22	1	1	0	67	FM/NBC	Road
		Sevirimabu Corner	789	704	Daru DHO	437	67	254	28.02.22	1	1	0	19	FM/NBC	Road
		Katatai Corner	774	387	Daru DHO	305	39	145	28.02.22	1	1	0	25	FM/NBC	Road
		Boze Corner	147	176	Daru DHO	137	22	75	28.02.22	1	1	0	11	FM/NBC	Road
		Bamu 1 Corner	778	836	Daru DHO	1,234	163	665	25.02.22	1	1	0	85	FM/NBC	Road
		Bamu 2 Corner	558	1,710	Daru DHO	1,467	209	770	25.02.22	1	1	0	129	FM/NBC	Road
		Bamu 3 Corner	757	847	Daru DHO	611	77	322	26.02.22	1	1	0	63	FM/NBC	Road
		Refugee Corner	418	0	Daru DHO	323	47	174	25.02.22	1	1	0	21	FM/NBC	Road
		Gaima Corner	1,047	913	Daru DHO	1,184	161	617	02.03.22	1	1	0	126	FM/NBC	Road
		Sikani Settlemnt	33	66	Daru DHO	599	82	301	03.03.22	1	1	0	69	FM/NBC	Road
		Solomon Corner	1,620	539	Daru DHO	379	83	181	01.03.22	1	1	0	3	FM/NBC	Road
		Dibiri /David's Corner		3,237	Daru DHO	2,477	300	1,237	02.03.22	1	1	0	122	FM/NBC	Road
		Wapu/U,uwo & Tirio Corners		406	Daru DHO	614	64	305	01.03.22	1	1	0	10	FM/NBC	Road
		Agobaro Corner		313	Daru DHO	460	57	225	01.03.22	1	1	0	14	FM/NBC	Road
		Iasa		NEW	Daru DHO	664	125	336	28.02.22	1	1	0	23	FM/NBC	Road
		Church Hill		NEW	Daru DHO	248	30	125	04.03.22	1	1	0	28	FM/NBC	Road
		Hospital Compound		NEW	Daru DHO	290	42	149	03.03.22	1	1	0	38	FM/NBC	Road
		Karakara		NEW	Daru DHO	701	72	351	02.03.22	1	1	0	68	FM/NBC	Road
		Hatchery		NEW	Daru DHO	24	5	15	06.03.22	1	1	0	5	FM/NBC	Road
		Crows Nest Lodge		NEW	Daru DHO	64	10	37	06.03.22	1	1	0	7	FM/NBC	Road
KIWI RURAL			24,778	24,911		24,515	3,582	12,180		58	53	2	702	28	
1	Sigabaduru		866	1,062		964	148	482		2	2	0	1		
		Sigabaduru	840	757	Mabudawan HC	870	132	435	14.02.22	1	1	0	1		Boat
		Sigabaduru Community School	26	304	Mabudawan HC	94	16	47	14.02.22	1	1	0	0		Boat/15 Min Trek
2	Mabudawan		1,811	2,006		1,831	290	924		3	3	0	11		
		Mabudawan	1,752	1,928	Mabudawan HC	1,756	267	884	16.02.22	1	1	0	11		Boat
		Mabudawan Community School	55	78	Mabudawan HC	19	3	9	16.02.22	1	1	0	0		Boat/15 Min Trek
		Mabudawan Health Centre	4	0	Mabudawan HC	56	20	31	16.02.22	1	1	0	0		Boat/Trek
3	Tureture		818	637		808	133	479		4	3	0	63		Coastal
		Tureture	601	637	Daru DHO2	627	102	374	12.02.22	1	1	0	59	NBC	Boat
		Waegara Community School	6	0	Daru DHO2	66	13	36	12.02.22	1	1	0	4	NBC	Boat
		Dudupatu	53	0	Daru DHO2					1					Included Under Tureture village
		Muwogido	158	0	Daru DHO2	115	18	69	04.03.22	1	1	0	0	NBC	Boat
4	Sui		1,045	1,249		1,355	157	687		2	2	0	5		Coastal
		Dewara	304	312	Daru DHO2	507	50	262	21.02.22	1	1	0	0	NBC	Boat
		Sui	741	937	Daru DHO2	848	107	425	21.02.22	1	1	0	5	NBC	Boat
5	Severimabu		1,483	1,918		1,724	254	874		2	2	0	49		Coastal
		Koabu	608	767	Daru DHO2	742	145	392	21.02.22	1	1	0	20	NBC	Boat
		Severimabu	875	1,151	Daru DHO2	982	109	482	21.02.22	1	1	0	29	NBC	Boat
6	Doumori		816	774		1,289	185	609		2	2	0	16		
		Doumori	816	608	Teapopo HC	689	102	325	23.02.22	1	1	0	3		Boat
		Gaima		165	Teapopo HC	600	83	284	23.02.22	1	1	0	13		Boat
7	Woriobodoro		1,100	1,028		1,157	183	551		2	2	0	47		
		Damera	497	351	Teapopo HC	448	80	216	21.02.22	1	1	0	35		Boat
		Wariobodoro	603	678	Teapopo HC	709	103	335	21.02.22	1	1	0	12		Boat
8	Maduduo		772	1,596		1,426	229	700		4	4	0	11		

LLG	WARD	VILLAGE	Estimated 2021 Population Based 2000 On Census	Estimated 2021 Population Based On 2018 Survey	Health Centre	Population Surveyed	House Holds Surveyed	Nets Issued	Date Of Distribution	Villages	Digicel	Bmobile	Houses With Radios	Radio Networks	Comments
		Koavisi (Kabaturi)	492	230	Teapopo HC	223	50	114	20.02.22	1	1	0	0		Boat
		Sagero	280	442	Teapopo HC	606	93	296	20.02.22	1	1	0	0		Boat
		Maduduo		395	Teapopo HC	378	55	181	21.02.22	1	1	0	8		Boat/Trek
		Yamiri		229	Teapopo HC	219	31	109	21.02.22	1	1	0	3		Boat
		Kabaturi		300	Teapopo HC										Same as Koavisi
9	Tire'ere		1,596	1,404		1,502	182	715		1	1	0	32		
		Tire'ere	1,596	1,404	Teapopo HC	1,502	182	715	20.02.22	1	1	0	32		Boat
10	Wapi		953	595		819	110	400		3	3	0	7		
		Aibinio	448	198	Samari HC	312	45	155	14.02.22	1	1	0	5		Boat
		Wapi	505	228	Samari HC	279	34	133	11.02.22	1	1	0	1	NBC & FM	Boat
		Purutu		169	Samari HC	228	31	112	11.02.22	1	1	0	1	NBC & FM	Boat
11	Sagasia		818	847		708	91	361		4	4	0	16		
		Agobaro	234	114	Samari HC	76	11	41	14.02.22	1	1	0	2	NBC & FM	Boat
		Ipsia	278	423	Samari HC	246	38	122	14.02.22	1	1	0	14	FM	Boat
		Sagasia	306	134	Samari HC	170	24	90	14.02.22	1	1	0	0		Boat
		Wapaura		175	Samari HC	216	18	108	14.02.22	1	1	0	0		Boat
12	Buji		759	881		855	146	426		3	3	0	1		
		Ber	232	175	Mabudawan HC	191	40	96	13.02.22	1	1	0	1		Boat
		Buji	383	377	Mabudawan HC	634	101	315	13.02.22	1	1	0	0		Boat
		Buji Community School	144	328	Mabudawan HC	30	5	15	13.02.22	1	1	0	0		Boat
13	Mawatta		365	354		427	75	238		1	1	0	67		
		Mawatta	365	354	Daru DHO2	427	75	238	13.02.22	1	1	0	67	NBC	Boat
14	Parama		807	776		725	87	371		1	1	0	30		
		Parama	807	776	Daru DHO2	725	87	371	22.02.22	1	1	0	30	NBC	Boat
15	Aberagerama		1,255	1,134		1,158	154	546		1	1	0	13		
		Aberagerama	1,255	1,134	Teapopo HC	1,158	154	546	22.02.22	1	1	0	13		Boat
16	Wabada		1,583	552		416	83	208		4	3	0	4		
		Dameratamu	973	0	Samari HC	187	43	94	12.02.22	1	1	0	1	NBC & FM	Boat
		Gesoa	610	192	Samari HC	115	16	58	12.02.22	1	1	0	0	NBC & FM	Boat
		Isomu		90	Samari HC	114	24	56	12.02.22	1	1	0	3	NBC & FM	Boat
		Wabada		270	Samari HC					1					General Name that is Known as Wabada Group of Islands. No Specific Village
17	Sepe		424	279		251	46	127		2	2	2	1		
		Sepe	193	68	Samari HC	105	17	52	13.02.22	1	1	1	0	NBC & FM	Boat
		Auti	230	211	Samari HC	146	29	75	13.02.22	1	1	1	1	NBC & FM	Boat
18	Samari		1,395	1,208		1,029	206	525		5	4	0	16		
		Iasa	405	186	Samari HC	123	27	63	13.02.22	1	1	0	0	NBC & FM	Boat
		Oromosapuo	378	389	Samari HC	291	51	149	14.02.22	1	1	0	1	NBC & FM	Boat
		Samari	549	439	Samari HC	442	90	223	13.02.22	1	1	0	14	NBC & FM	Boat
		Samari Community School	44	0	Samari HC					1					Included Under Samari
		Samarai Health Centre	7	0	Samari HC										Closed for 2 Years No Health Workers working
		Saguane	11	194	Samari HC	173	38	90	13.02.22	1	1	0	1	NBC & FM	Boat
19	Kadawa		1,002	1,089		1,175	153	571		1	0	0	156		
		Kadawa	1,002	1,089	Daru DHO2	1,175	153	571	19.02.22	1	0	0	156	NBC	Boat
20	Madame		1,157	1,218		1,001	124	510		2	2	0	22		
		Madame	595	440	Daru DHO2	387	25	189	21.02.22	1	1	0	0	NBC	Boat
		Wederehiamio	562	778	Daru DHO2	614	99	321	19.02.22	1	1	0	22	NBC	Boat
21	Maipani		942	1,113		981	135	463		1	1	0	86		
		Maipini	942	1,113	Teapopo HC	981	135	463	24.02.22	1	1	0	86		Boat/Trek
22	Kename		1,128	1,153		1,070	151	507		5	4	0	28		
		Kename	547	450	Teapopo HC	385	50	181	22.02.22	1	1	0	0		Boat
		Arato	475	457	Teapopo HC	482	67	228	22.02.22	1	1	0	18		Boat
		Teapopo Community School	94	75	Teapopo HC	21	3	10	22.02.22	1	1	0	3		Boat
		Teapopo Health Centre	11	0	Teapopo HC					1					HC Closed
		Demago(New Village)		171	Teapopo HC	182	31	88	22.02.22	1	1	0	7		Boat
23	U'uwo		1,201	1,329		1,214	164	610		2	2	0	8		
		Kubira	407	464	Samari HC	424	48	219	13.02.22	1	1	0	8	NBC & FM	Boat
		U'uwo	794	865	Samari HC	790	116	391	13.02.22	1	1	0	0	NBC & FM	Boat
24	Katatai		684	708		630	96	296		1	1	0	12		
		Katatai	684	708	Daru DHO2	630	96	296	18.02.22	1	1	0	12	NBC	Boat
				0											
MOREHEAD RURAL			21,196	21,382		20,602	3,946	10,393		79	52	0	26	7	
1	Bula		435	463		455	99	235		2	1	0	0		
		Bondobol	149	173	Morehead HC	161	50	88	02.03.22	1	0	0	0		
		Bula	193	290	Abudawan HC	294	49	147	15.02.22	1	1	0	0		Boat
		Kunji Settlement	92	0	Abudawan HC2										Non Existant
2	Vereavere		580	482		457	99	249		4	1	0	0		
		Weam Village	241	141	Morehead HC	137	33	76	03.03.22	1	1	0	0		Road
		Wereavere	304	319	Morehead HC	320	66	173	03.03.22	1	0	0	0		Road
		Weam Station	28	22	Morehead HC					1					Included Under Weam
		Weam Community School	7	0	Morehead HC					1					Included Under Weam
3	Wemnavere		743	735		739	169	397		3	0	0	0		
		Iokma	422	446	Morehead HC	427	99	230	01.03.22	1	0	0	0		Road
		Wemnevere	190	180	Morehead HC	199	42	107	01.03.22	1	0	0	0		Road
		Tokwa	131	109	Morehead HC	113	28	60	01.03.22	1	0	0	0		Road
4	Mibini		1,231	1,250		1,235	252	649		5	3	0	0		
		Jarai	199	235	Abudawan HC	227	47	115	15.02.22	1	1	0	0		Boat
		Mari	339	304	Abudawan HC	318	63	165	15.02.22	1	1	0	0		Boat
		Mari Community School	4	8	Abudawan HC2					1					Included Under Mari
		Mibini	322	340	Morehead HC	307	59	168	02.03.22	1	0	0	0		Boat
		Tais	367	364	Abudawan HC	383	83	201	15.02.22	1	1	0	0		Boat

LLG	WARD	VILLAGE	Estimated 2021 Population Based 2000 On Census	Estimated 2021 Population Based On 2018 Survey	Health Centre	Population Surveyed	House Holds Surveyed	Nets Issued	Date Of Distribution	Villages	Digicel	Bmibile	Houses With Radios	Radio Networks	Comments
5	Garaita		1,568	1,342		1,251	223	663		3	1	0	0		
		Mata	326	306	Morehead HC	279	56	149	25.02.22	1	0	0	0		
		Garaita	787	483	Morehead HC	474	79	249	25.02.22	1	1	0	0		
		Daraya	404	552	Morehead HC	498	88	265	28.02.22	1	0	0	0		
		Kwake Settlement	52	0	Morehead HC										Non Existant
6	Pongariki		958	854		805	155	436		6	1	0	0		
		Arufi	326	345	Morehead HC	308	54	163	01.03.22	1	0	0	0		Road
		Arufi Community School	203	0	Morehead HC	21	4	11	01.03.22	1	0	0	0		Road
		ECP Mission	9	28	Morehead HC	30	5	16	01.03.22	1	0	0	0		Road
		Derideri	135	164	Morehead HC	133	23	72	27.02.22	1	0	0	0		Road
		Pongariki	182	144	Morehead HC	152	28	85	26.02.22	1	0	0	0		Road
		Bebdeben	103	173	Morehead HC	161	41	89	27.02.22	1	1	0	0		Road
7	Dimisisi		789	799		810	147	428		4	2	0	0		
		Dimisisi	779	743	Morehead HC	309	68	171	08.03.22	1	1	0	0		
		ECP Mission	9	56	Morehead HC					1	1	0	0		Included Under Dimisisi
		Biram		NEW	Morehead HC	323	50	166	08.03.22	1	0	0	0		
		Iblamand		NEW	Morehead HC	178	29	91	08.03.22	1	0	0	0		
8	Sibidiri		647	737		735	123	370		3	3	0	0		
		Dimiri	400	422	labudawan HC	284	54	142	13.02.22	1	1	0	0		4-5 Hrs Boat
		Sibidiri	247	315	labudawan HC	354	53	178	15.02.22	1	1	0	0		4-5 Hrs Boat
		Kaikmawang		NEW	labudawan HC	97	16	50	13.02.22	1	1	0	0		4-5 Hrs Boat
9	Limol		564	556		578	92	280		2	2	0	21		
		Limol	267	306	Upiara HC	305	50	148	03.03.22	1	1	0	10	FM Daru	Boat / Trek
		Kinkin	297	249	Upiara HC	273	42	132	01.03.22	1	1	0	11	FM Daru	Boat / Trek
10	Keru		2,288	2,529		2,410	419	1,141		6	3	0	0		
		Sapuka (Lnaporok)	1,036	950	Suki HC	916	159	423	02.03.22	1	1	0	0		Boat/Trek
		Keru	560	185	Morehead HC	185	40	96	01.03.22	1	0	0	0		
		Serki	693	757	Suki HC	754	125	347	02.03.22	1	1	0	0		Road
		Geri		225	Morehead HC	223	40	114	01.03.22	1	0	0	0		Road
		Zembo		209	Morehead HC	200	33	103	01.03.22	1	0	0	0		Trek
		Didgwa		202	Suki HC	132	22	58	02.03.22	1	1	0	0		Trek/Boat
11	Pukaduka		2,123	2,436		2,359	416	1,114		6	6	0	0		
		Kiru	595	599	Suki HC	552	105	264	03.03.22	1	1	0	0		Boat
		Pukaduka	1,118	1,371	Suki HC	1,064	193	509	03.03.22	1	1	0	0		Boat
		Butu Settlement	87	0	Suki HC	245	41	110	03.03.22	1	1	0	0		Boat
		Milawa	219	241	Suki HC	342	50	156	02.03.22	1	1	0	0		Boat
		Nakaku Community School	42	112	Suki HC	87	15	40	28.02.22	1	1	0	0		Boat
		Nakaku Station	61	112	Suki HC	69	12	35	28.02.22	1	1	0	0		Boat
12	Kiriwo		835	907		791	156	423		3	2	0	4		
		Kiriwo	304	358	Morehead HC	262	55	144	27.02.22	1	1	0	4		Road
		Setavi	260	212	Morehead HC	237	46	122	27.02.22	1	0	s	0		Boat/Trek
		Merru	271	337	Morehead HC	292	55	157	26.02.22	1	1	0	0		Boat/Trek
13	Aewa		1,290	1,022		1,175	217	568		4	4	0	0		
		Aewa	459	534	Suki HC	512	96	246	01.03.22	1	1	0	0		Boat/Trek
		Riti	621	288	Suki HC	295	48	145	01.03.22	1	1	0	0		Boat/Trek
		Suki	210	0	Suki HC	125	23	63	01.03.22	1	1	0	0		Boat
		Gikata		201	Suki HC	243	50	114	01.03.22	1	1	0	0		Boat/Trek
14	Wando		638	801		711	150	374		5	5	0	0		
		Korombo	254	301	Morehead HC	296	58	152	03.03.22	1	1	0	0		Road
		Wando	306	150	Morehead HC	157	37	86	03.03.22	1	1	0	0		Road
		Wando Community School	70	18	Morehead HC	113	25	63	03.03.22	1	1	0	0		Road
		Bensbach Lodge	7	193	Morehead HC	14	5	10	03.03.22	1	1	0	0		Road
		Balamuk		140	Morehead HC	131	25	63	03.03.22	1	1	0	0		Road
15	Kandarisa		649	599		547	107	287		3	0	0	0		
		Indorodoro	289	284	Morehead HC	265	55	136	27.02.22	1	0	0	0		Road
		Kandarisa	273	235	Morehead HC	211	38	112	03.03.22	1	0	0	0		Road
		Mengete	87	79	Morehead HC	71	14	39	03.03.22	1	0	0	0		Road
16	Rouku		540	561		582	138	323		3	2	0	0		
		Rouku	273	330	Morehead HC	343	71	185	01.03.22	1	1	0	0		Road
		Uparua	153	86	Morehead HC	90	33	58	28.02.22	1	1	0	0		Road
		Damgar	114	146	Morehead HC	149	34	80	27.02.22	1	0	0	0		Road
17	Morehead Station		634	386		381	78	210		1	1	0	0		
		Morehead Station	634	386	Morehead HC	381	78	210	25.02.22	1	1	0	0		Road
18	Bimadeben		816	883		735	123	383		2	1	0	0		
		Bimadeben Vill/Comm.School	461	521	Morehead HC	473	81	250	27.02.22	1	0	0	0		Road
		Gubam	345	362	Morehead HC	262	42	133	27.02.22	1	1	0	0		Road
		Gubam Community School	11	0	Morehead HC										Included Under Gubam
19	Eniyama		1,104	1,361		1,168	229	570		4	4	0	0		
		Eniyawa (Duru)	958	858	Suki HC	819	158	403	02.03.22	1	1	0	0		Boat/Trek
		Gumaka	66	198	Suki HC	77	17	35	02.03.22	1	1	0	0		Boat/Trek
		Gwibaku	79	305	Suki HC	213	44	102	02.03.22	1	1	0	0		Boat/Trek
		Kiwa		0	Suki HC	59	10	30	02.03.22	1	1	0	0		Boat
20	Kautru		1,174	1,256		1,208	226	573		5	5	0	0		
		Kauturu	455	432	Suki HC	454	82	209	28.03.22	1	1	0	0		Trek
		Goe	173	119	Suki HC	140	25	70	01.03.22	1	1	0	0		Trek
		Gwaku	464	568	Suki HC	371	79	185	01.03.22	1	1	0	0		Trek
		Kumao		54	Suki HC	154	25	69	01.03.22	1	1	0	0		Trek
		Kwasam	81	83	Suki HC	89	15	40	01.03.22	1	1	0	0		Trek
21	Kondobol		877	787		886	242	430		3	3	0	1		
		Bok	206	196	Upiara HC	190	48	94	01.03.22	1	1	0	0	FM Daru	Boat / Trek
		Taeme Community School	17	71	Upiara HC	153	35	74	01.03.22	1	1	0	0	FM Daru	Boat / Trek
		Kondobol	654	520	Upiara HC	543	159	262	01.03.22	1	1	0	1	FM Daru	Boat / Trek
22	Malam		717	637		584	86	290		2	2	0	0		

LLG	WARD	VILLAGE	Estimated 2021 Population Based 2000 On Census	Estimated 2021 Population Based On 2018 Survey	Health Centre	Population Surveyed	House Holds Surveyed	Nets Issued	Date Of Distribution	Villages	Digicel	Bmobile	Houses With Radios	Radio Networks	Comments
		Kiwiang	380	315	Wipim HC2	303	40	151	25.02.22	1	1	0	0	91.5FM	Road
		Malam	337	322	Wipim HC2	281	46	139	25.02.22	1	1	0	0	91.5FM	Road
ORIOMO - BITURA RURAL			15,938	15,414		15,216	2,874	7,712		69	69	0	885	52	
1	Dorogori		750	743		849	123	421		4	4	0	22		
		Dorogori No.1	306	423	Daru DHO3	309	50	151	18.02.22	1	1	0	14	NBC	Boat
		Peawa (Woigi)	164	75	Daru DHO3	149	25	79	17.02.22	1	1	0	0	NBC	Boat
		Kouriti Settlement	144	43	Daru DHO3	202	11	100	17.02.22	1	1	0	0	NBC	Boat
		Guguwo	136	202	Daru DHO3	189	37	91	18.02.22	1	1	0	8	NBC	Boat
2	Wuroi		1,301	589		610	111	315		3	3	0	35		
		Zim	317	0	Daru DHO3	243	49	128	17.02.22	1	1	0	15	NBC	Boat
		Wuroi	396	274	Daru DHO3	42	8	22	17.02.22	1	1	0	5	NBC	Boat
		Murr Lagoon Sawmill	588	314	Daru DHO3	325	54	165	17.02.22	1	1	0	15	NBC	Boat
3	Wonie		352	493		445	85	224		3	3	0	4		
		Kuru No.2	76	161	Wipim HC	131	29	67	16.02.22	1	1	0	4	91.5FM	Road
		Wonie	199	258	Wipim HC	234	41	118	17.02.22	1	1	0	0	91.5FM	Road
		Kuru No.1	77	74	Wipim HC	80	15	39	16.02.22	1	1	0	0	91.5FM	Road/Trek
4	Iamega		459	465		533	94	264		2	2	0	1		
		Kubur Hamlet	37	151	Wipim HC	124	19	61	19.02.22	1	1	0	0	91.5FM	Road/Trek
		Mer	422	314	Wipim HC	409	75	203	18.02.22	1	1	0	1	91.5FM	Road
5	Wipim		846	638		622	126	313		5	5	0	11		
		Wipim	431	330	Wipim HC	291	66	147	17.02.22	1	1	0	1	91.5FM	Road
		Wipim Station	28	50	Wipim HC	25	5	13	17.02.22	1	1	0	0	91.5FM	Road
		Wipim Health Centre	42	11	Wipim HC	48	10	25	17.02.22	1	1	0	2	91.5FM	Road
		Wipim Community School	76	28	Wipim HC	28	5	14	17.02.22	1	1	0	5	91.5FM	Road
		Tavakip	269	220	Wipim HC	230	40	114	17.02.22	1	1	0	3	91.5FM	Road
6	Gamaeve		466	290		312	65	170		2	2	0	38		
		Mongwal		NEW	Daru DHO3	92	17	51	17.02.22	1	1	0	9	NBC	Road
		Gamaewe*Closer to Kunini HC	466	290	Daru DHO3	220	48	119	17.02.22	1	1	0	29	NBC	Road
7	Tewara		641	596		852	175	414		4	4	0	12		
		Rual No.1	236	227	Wipim HC	245	46	125	24.03.22	1	1	0	0	91.5FM	Road
		Rural No.2	61	39	Wipim HC	43	6	22	24.03.22	1	1	0	0	91.5FM	Road
		Tewara	345	331	Upiara HC2	344	69	162	01.03.22	1	1	0	8	FM Daru	Boat / Trek
		Negota		NEW	Upiara HC2	220	54	105	28.02.22	1	1	0	4	FM Daru	Boat
8	Kapal		439	428		401	75	202		1	1	0	2		
		Kapal	439	428	Wipim HC	401	75	202	24.02.22	1	1	0	2	91.5FM	Road
9	Upiara		879	559		557	139	249		3	3	0	1		
		Upiara	474	463	Upiara HC2	478	113	208	02.03.22	1	1	0	0	FM Daru	Vicinity
		Bituri Health Centre	24	54	Upiara HC2	45	9	22	02.03.22	1	1	0	0	FM Daru	Vicinity
		Bituri Community School	381	42	Upiara HC2	34	17	19	02.03.22	1	1	0	1	FM Daru	Vicinity
10	Giringarede		695	655		598	121	321		1	1	0	47		
		Giringarede	695	655	Daru DHO3	598	121	321	12.02.22	1	1	0	47	NBC	Boat
11	U'ume		512	572		567	148	302		3	3	0	45		
		U'ume	205	227	Daru DHO3	150	30	80	13.02.22	1	1	0	9	NBC	Boat
		U'ume Community School	146	202	Daru DHO3	287	89	155	13.02.22	1	1	0	25	NBC	Boat
		Mulabela	162	143	Daru DHO3	130	29	67	13.02.22	1	1	0	11	NBC	Boat
12	Masingara		866	909		815	133	439		2	2	0	59		
		Masingara	844	545	Daru DHO3	630	100	346	17.02.22	1	1	0	41	NBC	Boat
		Masingara Community School	22	365	Daru DHO3	185	33	93	17.02.22	1	1	0	18	NBC	Boat
13	Kunini		433	390		336	60	177		1	1	0	35		
		Kunini	433	390	Daru DHO3	336	60	177	12.02.22	1	1	0	35	NBC	Boat
14	Iru'upi		628	911		915	150	487		4	4	0	376		
		Drageli	190	240	Daru DHO3	226	37	120	14.02.22	1	1	0	9	NBC	Boat
		Iru'upi	348	497	Daru DHO3	604	97	320	14.02.22	1	1	0	320	NBC	Boat
		Tati	63	61	Daru DHO3	58	10	33	14.02.22	1	1	0	14	NBC	Boat
		Kura Community School	28	112	Daru DHO3	27	6	14	14.02.22	1	1	0	33	NBC	Boat
15	Waidoro		726	786		755	131	374		2	2	0	24		
		Kupere	129	187	labudawan HC	196	38	98	08.02.22	1	1	0	6		Boat
		Waidoro	597	599	labudawan HC	559	93	276	11.02.22	1	1	0	18		Boat
16	Kulalae		722	696		659	102	326		3	3	0	3		
		Kulalai (Togo)	556	308	labudawan HC	284	46	141	17.02.22	1	1	0	1		Boat
		Barnap Hamlet	52	74	labudawan HC	72	8	36	17.02.22	1	1	0	0		Boat
		Ngomtono Hamlet	114	314	labudawan HC	303	48	149	17.02.22	1	1	0	2		Boat
17	Wamarong		866	887		836	160	419		5	5	0	6		
		Ngao	532	140	labudawan HC	125	29	63	11.02.22	1	1	0	4		Boat
		Tapiri	11	123	labudawan HC3										Non Existant
		Wamarong	249	220	labudawan HC	220	43	110	11.02.22	1	1	0	1		Boat
		Wamarong DPI Station	17	0	labudawan HC3										Non Existant
		Kodoro Community School	57	267	labudawan HC	258	48	129	11.02.22	1	1	0	0		Boat
		Ardamroang		137	labudawan HC	117	19	58	11.02.22	1	1	0	0		Boat
				NEW	labudawan HC	116	21	59	11.02.22	1	1	0	1		Boat
18	Sebe		748	608		541	103	274		3	3	0	15		
		Kibuli Village	411	288	labudawan HC	318	64	162	11.02.22	1	1	0	10		Boat
		Kibuli Community School	31	112	labudawan HC	25	6	13	11.02.22	1	1	0	3		Boat
		Kibuli Health Centre	6	0	labudawan HC3										Non Existant
		Sebe	300	208	labudawan HC	198	33	99	11.02.22	1	1	0	2		Boat
19	Wim		617	625		533	124	266		4	4	0	13		
		Wim	479	422	Wipim HC	324	75	162	22.02.22	1	1	0	3	91.5FM	Road
		Kaner Hamlet	59	129	Wipim HC	112	29	55	22.02.22	1	1	0	9	91.5FM	Road/Trek
		Raroge		NEW	Wipim HC	85	17	43	21.02.22	1	1	0	0	91.5FM	Road
		Raroge Community School	79	74	Wipim HC	12	3	6	21.02.22	1	1	0	1	91.5FM	Road
20	Sogale		501	432		407	56	207		3	3	0	6		
		Glabi	219	187	labudawan HC	184	17	94	17.02.22	1	1	0	0		Boat

LLG	WARD	VILLAGE	Estimated 2021 Population Based 2000 On Census	Estimated 2021 Population Based On 2018 Survey	Health Centre	Population Surveyed	House Holds Surveyed	Nets Issued	Date Of Distribution	Villages	Digicel	Bmibile	Houses With Radios	Radio Networks	Comments
		Sogale	273	236	Wipim HC	93	20	48	21.02.22	1	1	0	6	91.5FM	Road
		Sogale Community School	9	9	Wipim HC	130	19	65	21.02.22	1	1	0	0	91.5FM	Road
21	Kurunti		394	345		342	49	171		1	1	0	0		
		Kurunti (Nanu)	394	345	labudawan HC	342	49	171	11.02.22	1	1	0	0		Boat
22	Abam		483	949		896	142	430		2	2	0	78		
		Abam	439	606	Daru DHO3	569	87	267	17.02.22	1	1	0	50	NBC	Boat
		Woigi	44	343	Daru DHO3	327	55	163	17.02.22	1	1	0	28	NBC	Boat
23	Boze		597	648		603	104	331		1	1	0	26		
		Boze	597	648	Daru DHO3	603	104	331	13.02.22	1	1	0	26	NBC	Boat
24	Bisuaka		490	670		751	212	374		4	4	0	22		
		Bisuaka (Saguanso)	230	259	Upiara HC2	347	76	172	01.03.22	1	1	0	14	FM Daru	Boat / Trek
		Janor Hamlet	136	137	Upiara HC2	158	43	78	28.02.22	1	1	0	0		Boat
		Petom Hamlet	55	71	Upiara HC2	78	16	37	01.03.22	1	1	0	0		Boat
		Kasimab	68	204	Upiara HC2	168	77	87	28.02.22	1	1	0	8	FM Daru	Boat
25	Podare		527	529		481	86	242		3	3	0	4		
		Biamod	85	142	Wipim HC	107	17	54	19.02.22	1	1	0	1	91.5FM	Road/Trek
		Podare	442	387	Wipim HC	303	55	152	19.02.22	1	1	0	3	91.5FM	Road
		Bititi			Wipim HC	71	14	36	21.02.22	1	1	0	0	91.5FM	Road/Trek