

ROTARIANS AGAINST MALARIA



LONG LASTING INSECTICIDAL NET DISTRIBUTION REPORT

ORO PROVINCE Ijivitari and Sohe Districts

Carried Out In Conjunction With The Provincial Government And Church
Health Services Of Oro Province

With Support From The Global Fund

8th August to 10th September 2022



Table of Contents

Executive Summary	3
Background.....	4
Schedule	6
Methodology.....	7
Results	11
Conclusions.....	12
Acknowledgements	14
Appendix One – History Of LLIN Distribution In PNG	14
Appendix Two – Malaria In Oro Province Compared With Other Provinces.....	19
Appendix Three - Malaria By Altitude	21
Appendix Four – Other Photographs	22

Annex One Detailed Distribution Data For Ijivitari District

Annex Two Detailed Distribution Data For Sohe District

Executive Summary

Oro Province is predominantly a low-lying coastal province on the northern coast of mainland Papua New Guinea (PNG). Most of the province (99.5%) lies in areas below 1200 metres in altitude where malaria is considered endemic and most of population (83%) actually live in areas below 400m where malaria is at its worst in terms of transmission. 70% of the population are accessible by road, 4% only by air and the rest mainly by boat or trekking.

The family level survey and distribution of Long-Lasting Insecticidal Nets (LLINs) was carried in the districts of Ijivitari and Sohe between 08th August and 10th September 2022.

Table One shows the estimated population to be covered by the program together with the actual population found along with the number of LLINs distributed by district. In total, 138,519 LLINs were distributed to a population of 274,303 people. This resulted in distribution of 50.5 nets for every 100 people in the province.

TABLE ONE – Population And Nets Distributed

District	Population from 2000 Census	Target Population 2019	Estimated Population 2022	Population Surveyed 2022	House Holds Surveyed 2022	Nets Issued 2022	Nets Distributed Per 100 People
Sohe	65,090	119,043	131,985	127,092	23,652	64,078	50.4
Ijivitari	67,975	134,188	148,777	147,211	25,537	74,441	50.6
Totals	133,065	253,231	280,762	274,303	49,189	138,519	50.5

A further 339 LLINs were donated to health centres as nets were surplus to requirement, were no longer in bales and in most cases could not be easily returned to a central location. These nets would be distributed to pregnant mothers and for use over hospital beds where needed.

The overall operational cost of the programme was 546,617.93 Kina (Approximately US\$ 151,840) resulting in a cost of about 3.94 Kina or US\$1.09 per net delivered. This was about 11% over the anticipated budget with large overspends in aircraft charters and fuel, particularly fuel for boats due to having to make extra planned trips along the coast to some destinations.

Overall, the distribution went well in Oro Province with excellent collaboration from provincial and district health authorities which resulted in most targeted communities being eventually reached and all household receiving nets. Sadly, the program was unable to deliver nets to Wards 1 and 2 of Kira due to social unrest in the area.

Feedback from partners and communities suggest they were happy with the methodology used as the process appeared transparent to all concerned. However, as always, there were a few families who complained that they did not receive enough nets but for the most part it is believed that this was a result of families not fully understanding the allocation system used.

Global Fund donated, supplied and covered all distribution costs for all the nets for Oro Province. The nets distributed in Oro Province were Magnet nets which came from India. This is the first time this type of net has been used in Papua New Guinea and RAM hopes that these are better quality LLINs than those distributed in the last few years.

The history of LLIN distribution in PNG and Oro Province is discussed in Appendix One and the malaria situation and stratification of malaria in Oro Province are discussed in Appendix Two and Appendix Three. Historically it can be said that LLINs have had a tremendous impact on malaria in Papua New Guinea but recent distributions in lower lying provinces have not resulted in decreased malaria but malaria appears to have been practically eliminated from the

highlands of PNG. We hope that the new nets (Magnets) distributed this time are sufficient to keep malaria at bay in all these areas of Oro for another three years.



Fig.1 – Initial Meetings With CEO And DPH (Left) And RAM Team With PHA On Arrival In Oro (Right)

Background

Rotarians Against Malaria (RAM) is a nationally based organisation which was formed in 1997 by the Port Moresby Rotary Club in recognition of the tremendous burden that malaria imposes on the people of PNG.

RAM has an organizational mandate to work in malaria control and the distribution of LLINs in Papua New Guinea and has been working for many years with the National Department of Health (NDOH) and other partners including multilateral and bilateral agencies such as UNICEF and WHO (World Health Organisation), NGOs and church groups. (See Appendix One for full history of LLIN Distribution)

Since 2010, RAM has been coordinating the distribution of nets to all districts and provinces on a three-year recurrent cycle. This effectively means that RAM visits every targeted village in PNG every three years. RAM has been funded by the Global Fund since 2009 and from 2017 to 2020 also from Against Malaria Foundation (AMF) which supplied PNG with the majority of its nets in 2017 and from 2018 onwards to all areas below 1600m only where most of the malaria transmission can be found. During the period 2017 to 2020, the Global Fund resources were therefore mainly used to fund the LLIN distribution costs and other relevant administration costs. However, in 2020, PNG was lucky to receive a donation of net from the Chinese Government and these were used for all areas between 1600-2000m of altitude.

It should also be noted that since 2015, the National Malaria Control Program no longer distributes nets in areas above 2000m as these are now considered too cold for malaria transmission to occur. The situation has also changed in 2021. AMF no longer is a donor to PNG and all costs have now reverted to Global Fund. With this change, RAM will have difficulties covering areas from 1600-2000m but PNG was very fortunate in that the Global Fund allowed savings from 2020 to be used to procure nets for 2021 for this altitude. At present, the funding situation for LLIN distribution to altitudes of 1600-2000 has not proved possible for 2022 and 2023 and it appears at this moment that all LLIN distributions in the future in PNG will be limited to 1600m only.

Generally, LLINs have been distributed to household level throughout the country but when shortage of funds occurred, different strategies of distribution have been used as mentioned above.

PNG can be roughly divided into five epidemiological zones.

- a) Areas which lie above 2000m in altitude which no longer receive LLINs as malaria transmission is not considered likely at these altitudes.
- b) Low lying areas of the country up to 1200m which have stable malaria endemicity and often have poor access to health continue to have household distributions.
- c) Areas from 1200 to 1600m which are generally considered to be of low transmission potential but traditionally have had occasional malaria epidemics due to poor immunity and changing weather conditions. LLIN distribution continue in these settings.
- d) Highlands regions between 1600 to 2000m in altitude such as Mount Hagen which have low malaria endemicity and generally easy access to health services. These are low priority areas and when funding is not available are left out. However, to date, these areas have been covered. From 2015 to 2016, these areas received nets for Under Five children only, and since 2017, to date, RAM has managed to find alternative sources to cover these areas. For example, in 2020, nets for these areas have been sourced from the Chinese Government and in other areas from the Global Fund. Fortunately, there was sufficient funds to cover these areas in 2021. Sadly, from 2022 there are no funds to cover these areas.
- e) In urban and peri-urban areas such as Port Moresby which are low lying areas with easy access to health, nets will not be distributed during funding constraints. Nets to these areas will be supplied through the private sector. Similarly, due to funding constraints in 2015, Lae City had Under Five Campaign LLINs only.



Fig.2 – Microplanning Meetings In Ako Health Centre (Left) With Making A Map Of The Area (Right)

As a result of this stratification and when funds had been reduced such as at the end of 2014, areas above 2000m no longer received nets and areas from 1600 to 2000m only received under five campaigns in 2015 and 2016. However, fortunately, due to the LLIN donation from the Against Malaria Foundation (AMF) in 2017, all areas received household distribution of nets except areas above 2000m, and some urban areas such as NCD, Goroka, Mount Hagen and Mendi. After 2018, AMF only donated nets to areas below 1600m but the country has been lucky to find funding to fill this gap of between (1600-2000m) in 2019, 2020 and for 2021 through donations from the Global Fund (2018-2021) and the Chinese Government (2020). However, funding for areas between 1600-2000 metres has now stopped as the Global Fund allocations are not presently enough to cover these areas above 1600m.

One of the conditions of the AMF donation is that RAM would strengthen the way in which surveys are carried out. These new innovative processes are described in the Methodology Section. These methodologies are now being carried out since the beginning of 2017. The major change to the survey methodology suggested by AMF is that previously a village meeting was called after a survey was carried out where names of family members were read out to ensure that all households had been surveyed. Instead of this process, a summary of every village surveyed is posted for 24 hours in a public place so that villages can ensure that all

their family members have been included in the survey. As a further verification process, members of RAM and local health staff team carry out random house surveys of 6% of households in every village to ensure that the survey process has been carried out correctly.

For household LLIN distributions, regardless of where they are carried out, they must include a survey and a distribution phase though implementation methods may considerably vary depending on specific circumstances. RAM's approach has been to concentrate on programme quality thus RAM develop methodologies that ensure that all recipients in an area actually receive nets and that this can be reported accurately.

The other major change to the original PNG programme of 2004 to 2009 carried out by the NDOH is that nets are allocated to families on a needs basis rather than simply the number of people in the family. Data analysis of National Capital District (NCD) data has shown that this gives a ratio of nets needed to be about 47 for every 100 people. In the previous LLINs distribution of Round-3 in 2006 to 2010, nets were allocated at a rate of one net to every 2.5 people. With the programme only receiving 80% of LLIN needs, and most provinces distributing for example two nets to families of three, in practically every province, nets ran out before the end of the distribution. The RAM programme makes all attempts to assure that this distribution anomaly does not happen by collecting all population information at the beginning of the program and then allocate the nets based on family needs. This strategy is practiced to ensure that all families receive nets throughout any given province. The only scenario where survey and net distribution may be done simultaneously is in very remote locations where it is not practically possible to return a second time to a location. This is particularly the case in remote villages which can only be reached by boat or very long treks and it is costly and impractical to return to the villages for a second time.



Fig.3 Microplanning In Itokama Health Centre (Left) And Gona Health Centre (Right)

In terms of coordination, RAM officers are allocated to specific LLGs or health centres where they coordinate the programme together with local health staff. In this capacity, RAM officers act as facilitators in terms of technical guidance to district health teams in each LLG as well as acting as financial officers and assuring quality control of activities taking place.

Schedule

Referring to Table Two, it can be seen that the main distribution in Oro Province started at the beginning of August and was finished within a month at the beginning September.

TABLE TWO
General Timetable Of Activities In Oro Province

District	Survey		Distribution	
	Start	Finish	Start	Finish
Sohe	08.08.22	11.09.22	15.08.22	09.09.22
Ijivitari	09.08.22	31.08.22	17.08.22	06.09.22

Methodology

Prior to planning and implementation, a master list of all villages of Oro Province was drawn up using data from the 2000 Census and the last RAM survey of 2019 in Oro Province. Villages in the list were organised by LLG and Ward. In this master list, the estimated population for 2022 for each village was estimated and recorded in two ways. Firstly, the population of each village is estimated using population figures from the 2000 Census and the estimated annual growth rate for Oro Province and then secondly, by taking the population surveyed in 2019 and applying the annual growth rate to each village. In addition to this, based on altitude maps, all villages in highlands provinces are categorised and colour coded by altitude zones of below 1200m, 1200 to 1600 metres, 1600 to 2000 metres and lastly those villages above 2000 metres. Only those villages below 1600 metres will receive nets.

In all areas, Health Centres form the hub from which distribution takes place to the respective villages in each health centre's catchment area. Therefore, with the planning data at hand, RAM staff work together with the Provincial Health Office to allocate every village to its nearest health centre (government or Church Based) and outlines how each village is reached from each health centre. From this it is possible to create a budget, estimate how many nets are needed to be sent to each health centre and work out any other logistic considerations such as use of airplanes or boats to deliver nets to some remote areas.

Once all logistical needs are calculated and nets delivered to the province or district, a RAM team will travel to the province. Once they are in the province, RAM officers are allocated to work with each health centre which becomes the centre of operations for that area.

With the arrival of RAM officers, each health facility identifies health staff members or non-health community volunteers to be involved with the programme. If local health staff are selected, then they are referred to as District Health Team (DHT) but if a non-health staff is selected then they are termed as a Team Leader. Both DHTs and Team Leaders are responsible for the survey and distribution of nets. Each DHT and Team Leader works only in the area in which the health facility is based.

Before any activities take place, RAM officers are expected to work with health staff and other team leaders to make detailed plans (micro-planning) of their activities for training, survey, verification and distribution of nets. This process involves making maps of the area, deciding how many teams are needed, and then making detailed work plans for each of the team members. This process also involves verifying that no villages have been left out of the census list and that the whole area is covered.

Also prior to field activities in any given LLG or health centre, a social awareness campaign was carried out in all villages informing villagers of the upcoming survey and distribution. This was also used as an opportunity for RAM officers to become familiar with each area. During this process, key malaria messages were also discussed with villagers such as the need to use LLINs every night.

During the social awareness campaign, a daylong training meeting is normally held at each health facility for all DHT members in that area who jointly carry out the micro-planning exercise. These training and micro-planning sessions as well as all other activities associated with the programme are coordinated by RAM project officers together with health counterparts at provincial and district levels. RAM officers also have the responsibility to ensure the LLINs operation is kept in line with the original budget.

Survey

The survey was carried out in the following way.

- 1) When arriving at a village and before starting the census process, a meeting was held with village elders explaining the process.
- 2) If village elders have an up to date list of all village occupants, the team would use this list to compile a census but still visit every household to confirm this information.
- 3) Where a village is small, e.g., less than 30 families, team members may carry out the census by themselves.



Fig.4 – Training Village Survey Volunteers In Oro Bay (Left) And Kokoda Hospital (Right)

- 4) Where villages are large, village volunteers were identified with the assistance of the village chiefs, elders, health staff and councillors. One volunteer was chosen for each group of about 50 families with volunteers chosen by natural divisions in the village e.g., clans where one volunteer would make a list of only one clan. These volunteers were trained to carry out the survey by actually surveying houses with the team leaders supervising and assessing the recording. Once the team leader was confident that the volunteers knew the survey methodology, they were left to continue with the household survey with survey teams returning within an agreed period to verify the work of the survey volunteers, collect survey books and also to pay the survey volunteer, provided that the work was carried out correctly. The training of volunteers may occur in groups or individually depending on access to the village and its proximity to other villages.
- 5) For each household surveyed, all family members who normally reside at the household for a minimum of nine months were recorded by Name, Age, Sex and Relationship to head of household. All names and other information were recorded in the survey book with one survey form being used for each household.
- 6) After surveying a household, a white copy of the census form was given to the head of household or most senior person present in the household.
- 7) Where a whole household was absent, information was taken from the neighbours and the white survey form left with them.
- 8) In all cases, after the census/list was finished, all the information about the households and number of household members is entered into a summary sheet. This list is then hung in a public place where all villages can verify that the right number of family members for each household has been recorded and that all families have been included in the survey. After the list has been in a public place for 24 hours, then the volunteer requests for the RAM officer and or DHT to visit the village.

- 9) RAM officers and DHTs must visit three households randomly from each survey book (6%) and verify that the survey has been carried out correctly. Only when this has been done, then the volunteer can be paid.
- 10) If a village was surveyed by more than one volunteer, then volunteers were asked to work together so that lists can be hung together and the village volunteers can be verified at the same time. This process also ensures that households do not appear on more than one list. After this process, both the volunteers and the village elders sign a form to verify that this was done.
- 11) All village volunteers received a standard payment of 20 kina a day. Experience has shown that volunteers can usually only survey about 25 households a day, so for the most part, they would receive up to two days' allowance to complete a survey book (50 households).
- 12) All volunteers were also given a small training manual. Contained in this training manual are key health education messages about malaria which volunteers are expected to discuss with households. This perhaps is the only project in PNG that is able to reach down to potentially every household in the country.



Fig.5 – Household Survey Volunteer Training In Sakarina (Left) and Ambassi (Right)

To aid with the survey, the master plan with names of all census units in all the wards in the district had been printed out and given to all the DHTs and team leaders. This document also provides the projected population per census unit as well as other information which might be useful to the area concerned.

After collecting survey data from each village, the information is immediately compared with the data on the master sheet. Where the surveyed population is very different from the projected population, the project staff make enquiries into the reasons for these discrepancies.

Following the survey, all data was entered into a computer where possible or entered into a master sheet of the area concerned. For each village, nets were allocated to each family on a needs basis and this is also entered into the computer or master sheet. This process ensured that all villages received nets and that there would be no shortfalls.

The needs basis in PNG is based on the assumption that children under the age of six sleep with their parents, after which boys and girls are grouped separately from their parents. Nets are also allocated based on the number of children in the house, their ages, and whether there are other dependents living in the households such as grandparents. A full description of the allocation system can be obtained from RAM officers but suffice to say a family of four could receive between one to four nets depending on the sex and age of family members.

Nets are allocated to each LLG based on assumed populations of each LLG and it was important prior to the distribution to ensure that when allocations had been carried out to families and villages that there were enough nets available to cover each and every family.

Distribution

There was no official launch for the LLINs distribution in Oro Province. However, prior to distribution there was a social awareness phase where the project teams informed communities about the arrival of the distribution teams, especially those accessible by road.

The LLINs were then distributed to teams depending on the needs of each village. The LLINs were then distributed by village or wards depending on whether villages were close together. In this latter case, a central location was identified in the ward and then distribution of nets was carried out. In terms of distribution sites, villages were organised in different ways to make the flow of nets easy and effective. However, the actual organisation depended on each team and the structure of the various groups receiving nets.

All net packaging was opened at distribution site with a district code printed on each net e.g., OP22 meaning Oro Province 2022. This code is added to identify nets to assist in future monitoring exercises as well as discouraging householders from selling the nets on the open market.

Some examples of the process used to control the crowd includes;

- Arranging the people according to the serial numbers in the survey books e.g., 72001 - 72050 and then calling the names and the serial numbers.
- Call the names of the owners of the households, collect the white copy and give the nets.
- Wait for everyone to come to the distribution site, collect all the white copies and sort the copies with the pink copies. Call the names on the white copies and give the nets.

Some of the following control methods were used.

- Everyone who presented with a white copy was given LLINs at the distribution site with LLINs only given to the owner of the house or a member of the house whose name is written on the back of the survey form.
- Those people who lost the white receipts were left to the end of each distribution, with nets only being issued if the name of the person collecting the nets was found on the back of the pink copies.
- For those families who were absent at the time of distribution, their names were written in a form – MOSQUITO NETS HELD IN TRUST BY VILLAGE CHIEFS FORM and the nets allocated to missing families were given to chiefs or any person entrusted by the community with the forms for these families to collect their LLINs later.
- Householders are now being asked to make a thumb print as proof of delivery of nets to a household. The Global Fund had formally asked that householders should sign for delivery of nets. This was considered problematic as many householders are illiterate and even where householders can write, this process takes a long time in what is often a very chaotic and charged environment where speed is of the essence.

It should also be noted that surveys and distributions took place at more or less the same time in some remote places of Oro Province. This is particularly true for mountainous villages or villages at the end of rivers which might take several hours or days to reach. In these instances, estimations based on the 2000 Census data and local knowledge used to pre-allocate nets. Teams were then dispatched to these areas with nets. On arrival in these remote places, surveys took place and were immediately followed by a distribution based on the survey results.

Other details

In the case of Oro Province, all LLINs were ultimately delivered to Lae by ship from India in twelve containers. These nets are known as Magnet are light blue in colour and made from polyethylene. All nets arriving in Lae were custom cleared by Express Freight Management (EFM) and then stored primarily in the premises of EMF transport yard in Lae before being shipped to Popondetta in Oro with Consort Shipping. From Popondetta the nets were taken by road, dinghy or aircraft to the various health facilities around the province.

Results

Table Three shows the LLIN distribution data by district and Table Four by Local Level Government (LLG). These table give the actual population surveyed together with the number of LLINs distributed by district. In total, 138,519 LLINs were distributed to a population of 274,303 people in the two districts. This resulted in distribution of 50.5 nets for every 100 people in the province.

TABLE THREE
Nets Distributed At District Level In Oro Province

District	Population from 2000 Census	Population Surveyed 2019	Estimated Population 2022	Population Surveyed 2022	House Holds Surveyed 2022	Nets Issued 2022	Growth Rate Against 2019 Survey	Nets Distributed Per 100 People
Sohe	65,090	119,043	131,985	127,092	23,652	64,078	2.20	50.4
Ijivitari	67,975	134,188	148,777	147,211	25,537	74,441	3.14	50.6
Totals	133,065	253,231	280,762	274,303	49,189	138,519	2.70	50.5

Referring to Table Three and Table Four, it can be seen that the overall population growth rate is roughly 2.7% overall but this should be closer to 2.85% if the none surveyed area of Kira is included where there was a Tribal Fight which is reflected in the negative growth rate of Kira Rural seen in Table Four. Similarly, lower growth rates are seen in Kokoda, Higaturu and Afore Rural LLGs with a high growth rate in Popondetta Urban reflecting a rural to urban population movement.

TABLE FOUR
Nets Distributed At LLG Level In Oro Province

LLG	District	Population from 2000 Census	Target Population 2019	Estimated Population 2022	Population Surveyed 2022	House Holds Surveyed 2022	Nets Issued 2022	Growth Rate Against 2019 Survey	Nets Per 100 People
Kokoda Rural	Sohe	15,730	27,013	29,950	28,837	5,729	14,678	2.20	50.9
Higaturu Rural	Sohe	35,200	69,248	76,776	74,356	13,835	37,342	2.40	50.2
Tamata Rural	Sohe	11,742	19,833	21,989	21,882	3,706	11,030	3.33	50.4
Kira Rural	Sohe	2,418	2,949	3,270	2,017	382	1,028	-11.89	51.0
Oro Bay Rural	Ijivitari	19,953	40,397	44,789	43,656	7,735	22,390	2.62	51.3
Cape Nelson Rural	Ijivitari	14,331	24,463	27,123	27,165	4,767	13,519	3.55	49.8
Afore Rural	Ijivitari	13,834	23,500	26,055	24,765	4,187	12,631	1.76	51.0
Popondetta Urban	Ijivitari	19,866	45,828	50,810	51,625	8,848	25,901	4.05	50.2
Totals		133,074	253,231	280,762	274,303	49,189	138,519	2.70	50.5

Table Five shows that 339 nets were left over at the end of the program and were donated to health centres. In general, these nets were left where the nets were loose and no longer in bales or the nets were very few or the nets could be difficult to return to a central location. In general, these nets would be used for hospital beds or for antenatal mothers.

TABLE FIVE
Nets Donated To Health Facilities

District	LLG	HC	Donated
Sohe	Kokoda Rural	Emo HC	250
Sohe	Higaturu Rural	Saiho HC	24
Ijivitari	Afore Rural	Afore HC	17
Ijivitari	Afore Rural	Sakarina HC	9
Ijivitari	Afore Rural	Itokama HC	39
TOTAL			339

With reference to Table Six, it can be seen that the overall operational cost of the programme was 546,617.93 Kina (Approximately US\$ 151,840) resulting in a cost of about 3.94 Kina or US\$1.09 per net delivered. This was about 11% over the anticipated budget with large overspends in aircraft charters and fuel, particularly fuel for boats due to having to make extra planned trips along the coast to some destinations.

TABLE SIX
Cost Of Programme In Oro Province (All Costs in Kina)

Expense Types	Budget	Actual	Variances	% Variance
Human Resources	K145,021.88	K160,232.92	-15,211.04	-10.5
Fuel Cost	K61,520.00	K89,154.55	-27,634.55	-44.9
Car Hire Cost	K176,400.00	K167,027.36	9,372.64	94.7
Boat Hire Cost	K56,700.00	K50,550.00	6,150.00	89.2
Aircraft Hire Cost	K24,000.00	K74,533.00	-50,533.00	-210.6
Stationeries/Supplies	K3,000.00	K462.45	2,537.55	15.4
5% Contingency	K23,332.09	K4,657.65	18,674.44	20.0
Totals	K489,973.97	K546,617.93	-56,643.96	-11.6

Referring to Table Seven, this shows the radio and cell phone coverage for Oro Province. Coverage appears reasonably good in Sohe but much less in Ijivitari. This means that in remote areas with little radio or cell coverage getting health information into these areas will remain challenging.

TABLE SEVEN
Cell and Radio Coverage In Oro Province

District	Villages	House Holds Surveyed	Digicel	Bmobile	Houses with Radios	Villages With Radio Networks
Sohe	434	23,652	321	88	4,711	336
Ijivitari	451	25,537	254	82	4,500	289
Total	885	49,189	575	170	9,211	625



Fig.6 – Survey Verification In Ioma (Left) And Village Lists Hung Up In Itokama (Right)

Conclusions

Overall, it can be said that the LLIN distribution in Oro Province was generally a huge success both in terms of results and great collaboration between staff from RAM, provincial and district health authorities, and the Anglican Church Health Services who have a presence in the districts receiving nets. Through this collaboration, the data suggests that all villages were reached and practically all families in those villages received nets despite any local challenges.

There were some challenges which include:

- Delay in survey and distributions for a couple of days due to fighting between locals under Saiho catchment areas leading to blockage of the main highway.
- Drunkards and drug addict youths sometimes stopping vehicles demanding for money on the main highway and Kikiri waterfront. At one instance the RAM officer in charge of Oro Bay Health Centre got her vehicle stopped and her laptop and other personnel belongings were robbed. The matter was reported to the police but nothing was done.
- It was dry season causing the Gira and Ea Rivers to be very shallow for Manau and Ako Health Centre. The dinghy's when travelling upstream had to move very slow to avoid hitting submerged logs and rocks. Also, the nets for some areas were trekked as dinghies could not make it as in previous operations.
- Heavy rainfall at Emo Health Centre resulting in trekking conditions and minor landslides delayed operations as tracks were difficult to use.
- Officer at Emo HC got injured during the program, hence could not find his own way out. We had to send in a helicopter to take him back to Port Moresby.
- Due to tribal fighting in Kira, we could not do two wards. These places are still not done pending confirmation from the locals that the fighting has ceased. We will send one officer via Lae to complete the two wards.

Other than this, as with other provinces in the country where RAM has operated in over the last ten years, the methodologies used this time, including survey verification processes appeared practical and were openly welcomed by both villagers and implementers, particularly the practice of hanging up the list of names in the middle of the village following a survey. This allowed communities to feel that they were part of a transparent process. This is not to say that perhaps some extra people managed to slip into the books, but in general, it was felt that the system was fair and included practically everyone concerned. The use of the master lists also ensured that all villages were reached and accounted for.

The review of the data prior to the distribution was also important. This ensured that all villages and families received the correct numbers of nets. The 2000 Census Lists were very important to ensure that survey teams reached all villages: without the complete list of villages, it would be very difficult to make a detailed report.

The greatest complaint still received from communities was the number of nets they received. Even though the team explained the logic of how the allocation of nets is calculated, some families still expect one net per person, others expect it to be based on a fixed allocation based on the number of people in the family, and yet others thought they would be given nets based on the number of nets they stated they already had. This highlights that a better system of explaining the allocation system still needs to be developed. In general, unlike some previous districts covered by RAM and DHTs of Oro Province assisted in the allocation of the nets which meant they were in a better position to explain the distribution system on the ground. Nevertheless, despite all the difficulties involved, it would appear that the vast majority of community members accepted the outcome and there were no real problems or complaints encountered.

Acknowledgements

On behalf of the Rotarians Against Malaria household distribution team who worked in Sohe and Ijivitari districts, we would like to sincerely acknowledge and thank the Oro Provincial Health Authority and the District Health Staff of the two districts for the excellent help and cooperation during the Long Lasting Insecticide Nets (LLINs) distribution programme in the province.

In particular, we would like to thank at provincial level Mr Titus Stanley Mokuta (Chief Executive Officer) and his team with special thanks to Mr Champion Sagiribo (Director Public Health) and Ms Grace Rahua (Provincial Malaria Supervisor).

For the district staff, we would like to sincerely thank all those who tirelessly took part in the programme, and in particular we would like to mention the following people who were instrumental in providing the local expertise and advice from planning to implementation of the programme in the two districts namely:

Sohe District

Name	Occupation	Institution
Mr. Harold Korina	Health Extension Officer	Saiho Health Centre
Mr. Israel Arthur	Community Health Worker	Saiho Health Centre
Mr. Barri Erai	Community Health Worker	Manau Health Centre
Mrs. Florence Tumbari	Health extension Officer	Kokoda Health Centre
Mr. Thomas Yawer	Community Health Worker	Kokoda Health Centre
Mr. Elijah J	Community Health Worker	Ilimo Aid Post
Mrs. Lina Embo	Community Health Worker	Eiwo Aid Post
Mrs. Jane Orere	Community Health Worker	Sirope Aid Post
Ms. Rogeal Bambi	Officer in Charge	Sangara Health Centre
Mr. Mathias Toroi	Lab Officer	Sangara Health Centre
Mr. Clancy Tumbari	Community Health Worker	Sangara Health Centre
Mr. Churchill Gore	Community Health Worker	Sangara Health Centre
Ms. Ethel Ombi	Community Health Worker	Sangara Health Centre
Mr. Anthony Kalama	Community Health Worker	Ioma Health Centre
Mr. Osborn Nana	Officer in Charge	Emo Health Centre

Ijivitari District

Name	Occupation	Institution
Mr. Jim Konembo	Health Extension Officer	Ako Health Centre
Mr. Barnabas Gonia	Community Health Worker	Ako Health Centre
Mrs. Penny Ada	Community Health Worker	Ako Health Centre
Mr. Nicholas Nale	Community Health Worker	Foru 2 Aid Post
Mrs. Grace Moka	Officer in Charge	Oro Bay Health Centre
Mrs. Delma Ganjinapa	Community Health Worker	Oro Bay Health Centre
Mrs. Betsy Kirata	Community Health Worker	Oro Bay Health Centre
Mr. Lester Dona	Officer in Charge	Itokama Health Centre
Mr. Mark Melosi	Officer in Charge	Gona Health Centre
Mr. Som Ninja	Nursing Officer	Gona Health Centre
Mr. Thomson Konaka	Nursing Officer	Gona Health Centre
Mrs. Daisy Hovuga	Community Health Worker	Gona Health Centre
Mr. Alphaeus Ujari	Officer in Charge	Afore Health Centre
Mr. Peter Ekoda	Community Health Worker	Afore Health Centre
Mr. Michael Gaiari	Community Health Worker	Afore Health Centre
Mrs. Cathy Dabadaba	Community Health Worker	Afore Health Centre
Mr. Gideon Bariana	Officer in Charge	Sakarina Health Centre
Mr. Francis Belei	Community Health Worker	Sakarina Health Centre
Mr. Hobert Bugewa	Community Health Worker	Sakarina Health Centre
Mr. Henry Nali	Community Health Worker	Sakarina Health Centre
Mrs. Margaret Hite	Officer in Charge	Tufi Health Centre
Mr. Steven Opio	Community Health Worker	Ambasi Health Centre

RAM would like to specially acknowledge the support received from established and local service providers for logistical support namely; Consort Shipping company for delivering twelve containers from Lae to Oro Province and Oro Ports Services for the cartage of the containers from Oro Bay to Popondetta town where they were laid down in the PHA yard.

RAM also thanks No.1 Hire car, Island Mobile hire car and all the local hire car and local boat owners for providing their service for this operation. We would not have reached many communities without the dedication of the drivers and dinghy operators. RAM also extends its gratitude to Air Sanga Aviation who provided us aircraft support to drop off officers with nets to remote areas and Helifix for pick up off two officers, one at Emo Health Centre and the other at Safia Health Centre. RAM would like to also thank IPL and Oro Logistics Limited for supplying bulk fuel for the operation.

RAM also thanks all the church run health facilities coordinated under Anglican Church and lastly to all the Government run facilities for allowing their staff to work with the RAM team.

Last but not the least, RAM would like to extend our acknowledgement and appreciation to all the hard-working volunteers and other local community leaders for ensuring all homes were surveyed and assisted in distributing all the nets. RAM thanks you all very much for your hard work, support and local expertise in making the overall program a success.

Appendix One – History Of LLIN Distribution In PNG

The use of Insecticide Treated Nets (ITNs) started in PNG in 1985 when the PNG Institute of Medical Research (IMR) conducted one of the first trials demonstrating the health impact of treating mosquito nets with insecticide. The study, done near Madang, showed a reduction of *P. falciparum* incidence and prevalence in children below five years of age sleeping under permethrin-treated nets. The protective effect of insecticide-treated nets (ITNs) was also confirmed in many other trials around the world. As a consequence of such findings, the national malaria control program in PNG started emphasizing the use of ITNs in 1989. However, no regular or large-scale distribution of ITNs was carried out at this time.

In the following years, coverage with mosquito nets and other control interventions remained patchy and low in many parts of PNG. It was during this period that Rotarians Against Malaria (RAM) was created from the Port Moresby Rotary Club in 1997. Using a donation of 150,000 treated nets given to them from the National Department of Health (originally from AusAid), RAM successfully ran a revolving fund of nets in which nets were sold at a price which allowed the proceeds to buy more nets. RAM did this successfully for many years distributing about 45,000 treated nets a year from 2000 to 2004.

Prior to 2004, most treated nets had to be re-treated every six months or a year which requires a lot of work and organisation. In early 2004 everything changed with the introduction of Long-Lasting Insecticidal Nets (LLINs) which would last for 20 heavy duty washes and effectively no longer required to be treated repeatedly. This change in nets also coincided with the introduction of the Global Fund into PNG known as the Global Fund Round 3.

From 2005 to 2009 the malaria programme in PNG received and delivered about 2.3 million nets throughout the country at a rate of one net for every 2.5 people. The delivery of nets to village level was under the provincial health authorities and reached most parts of the country with Rotarians Against Malaria (RAM) being responsible in delivering the containers of nets to the provinces from Port Moresby and Lae where the nets arrived from overseas.

While the programme was very successful in some areas it was not so successful in others. Problems included slow release of funds from central to provincial level, some provinces not following technical guidelines given resulting in some areas not being covered, and technical and financial reporting leaving a lot to be desired in many of the provinces. When further funds became available in what is known as the Global Fund Round Eight, it was decided that Rotarians Against Malaria (RAM) would take over the coordination of the LLIN programme.

This change has resulted in RAM being responsible for the overall coordination of the LLIN distribution of LLINs in the country particularly in the areas of quantification, procurement, reporting and delivery to provincial and district level. However, the actual delivery of nets to village level is a collaboration between RAM, provincial health authorities and district health and health centre staff.

Fig.1 shows the distribution of nets to districts and provinces from 2006 to 2009 while Fig.2 shows the distribution of nets from 2010 to 2014 and Fig.3 shows the distribution from 2015 to 2017 which includes under five distributions in 2016 and 2017. Under Five distributions had been carried out in areas above 1600m and in Port Moresby and Lae City due to lack of funds. This situation changed when support from Against Malaria Foundation was received.

Up until December 2020, a total of 13.0 million LLINs had been distributed to household level under the coordination of RAM. Therefore, with the 2.5 million nets distributed from 2006 to 2009, this means that about 15.5 million nets have been delivered to household level in PNG since 2006. This is more than one net per every person in PNG. RAM has also distributed

about another 1.5 million nets to health centres for distribution to pregnant women and for prisons and boarding schools.

It should also be noted that alongside developments related to treated mosquito nets, the first cases of chloroquine-resistant malaria were reported in 1976. This progressed rapidly to widespread resistance of *P. falciparum*, and to a slightly lesser extent *P. vivax*, to chloroquine, amodiaquine and sulphadoxine-pyrimethamine (SP). In studies conducted between 2003 and 2005, even combination regimens of these drugs faced up to 29% resistance of *P. falciparum*². This situation together with Global Fund Round 8 also saw the introduction of artemether lumefantrine branded as Malawan and IPT (Intermittent Preventative Treatment) for antenatal women using Fansidar (Pyrimethamine Dapsone).

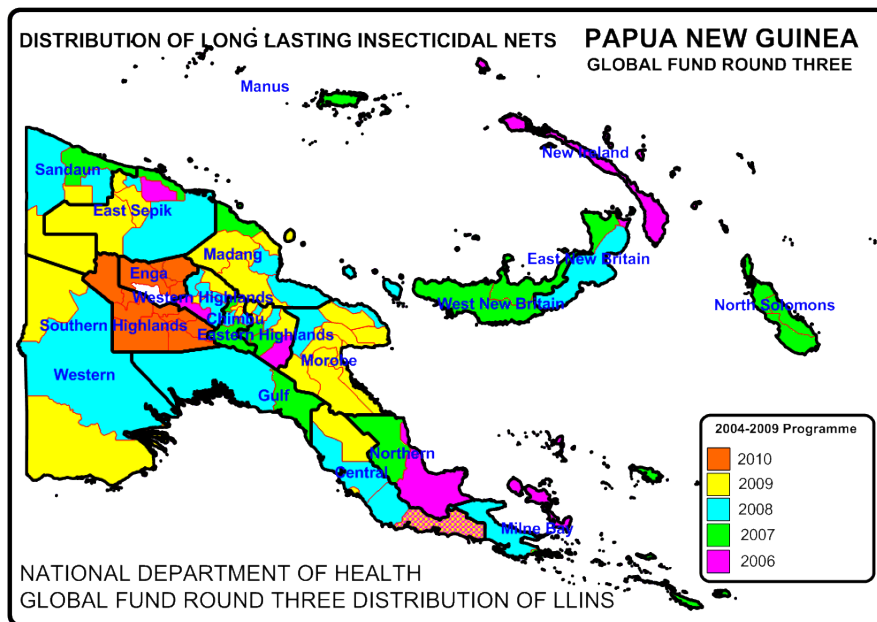


Fig. 1 Distribution Of Nets Under National Department Of Health From 2006 To 2010

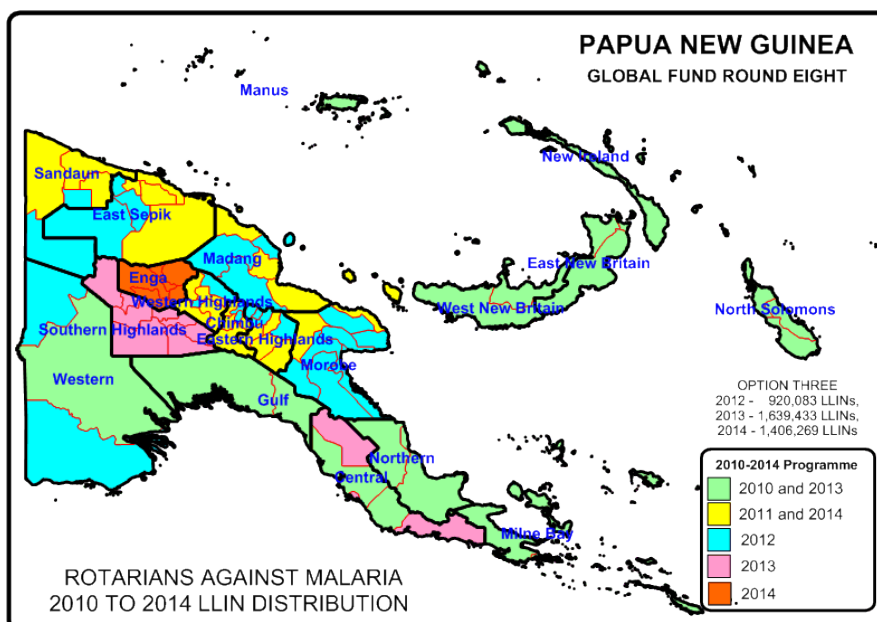


Fig.2 Distribution of LLIN Programme 2010 to 2014

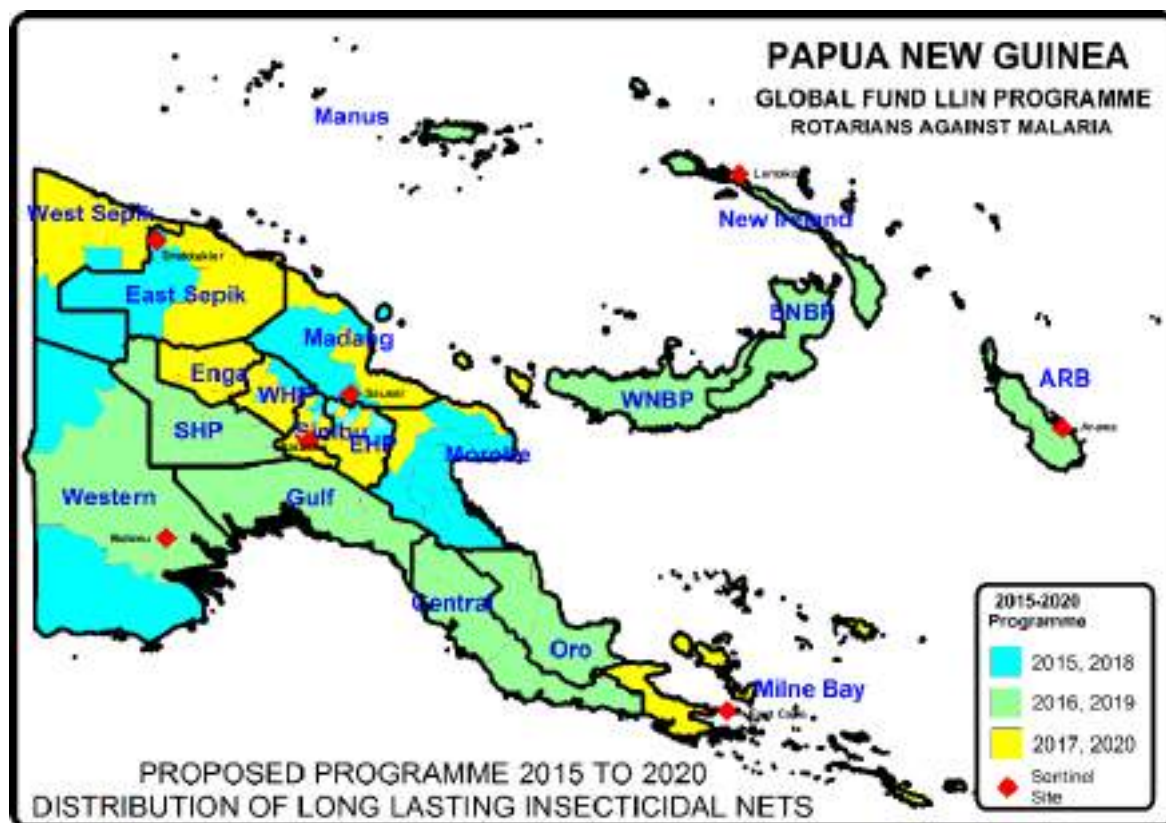


Fig.3 LLIN Distribution Programme 2015 to 2020

TABLE ONE - LLINs Delivered In PNG Under Coordination Of RAM From 2010

Period	Dates	Districts	Provinces	Nets Delivered	Type Of Net Delivered
Phase One (2010-2011)	Nov 09 - Oct 11	50 Districts	18 Provinces	1,890,448	Permanet 2
Year 3 (2012)	Nov 11 - Sep 12	27 Districts	10 Provinces	832,671	Permanet 2
Year 4 (2013)	Oct 12 - Sep 13	28 Districts	12 Provinces	1,210,391	Permanet 2
Year 5 (2014)	Oct 13 - Sep 14	23 Districts	11 Provinces	1,374,791	Permanet 2
Year 5 (2014) No Cost Extension	Oct 14 - Dec 14	Okapa, Lu fa, Madang, Angoram, Maprik, Yangoru Saussi, Wewak, Aitape Lumi, Nuku and Vanimo Green	EHP, Madang, East Sepik and Sandaun	454,806	Permanet 2
Year 6 (2015)	Jan - Dec 2015	29 Districts	11 Provinces	932,822	Permanet 2
Year 7 (2016)	Jan - Dec 2016	27 Districts	13 Provinces	805,597	Permanet 2
Year 8 (2017)	Jan - Dec 2017	36 Districts	13 Provinces	1,543,947	Permanet 2
Year 9 (2018)	Jan - Dec 2018	27 Districts	11 Provinces	1,211,922	Permanet 2
Year 10 (2019)	Jan - Dec 2019	26 Districts	12 Provinces	1,266,525	Permanet 2
Year 11 (2020)	Jan - Dec 2020	28 Districts	13 Provinces	1,495,368	Safenet, Interceptor, Yorkool and Royal Sentry
Year 11 (2021)	Jan - Dec 2021	30 Districts	9 Provinces	1,301,456	Yahe
	Jan- Mar 2022	North and South Fly, Telefomin, Kairuku	Western, Sandaun, Central	164,212	Magnet, Yahe
	Apr - Jun 2022	Rigo, Kairuku Hiri, Gollala, Koroba Kopiago, Komo Magarima, Nipa, Kagua Erave, Ialibu Pangia, Kerema	Southern Highlands, Hela, Central, Gulf	242,948	Magnet, Yorkool
New Funding Model (2015-2021)				8,964,797	
Round Eight (2010 - 2014)				5,763,107	
Overall Total Phase One and Phase Two And NFM				14,727,904	

Appendix Two – Malaria In Oro Province Compared With Other Provinces

Fig.1 shows the decrease of malaria from 2007 to 2015 in all provinces, Fig. 2 shows the actual malaria incidence in 2020 compared with other provinces and Fig.3 shows annual malaria trends from 2017 to 2021. In Oro Province, it can be seen from Fig.1 that malaria decreased from 2007 to 2015 by 67% which is a similar reduction to most provinces on the north coast of PNG. In Fig.2, in 2020 it can also be seen that in Oro Province the malaria incidence is 200 per 1000 which is similar to Morobe and Gulf in the coastal areas of PNG. Fig. 3 and Fig.4 show the malaria incidence by year with Fig.4 showing malaria incidence compared with net distributions. It can be noted that in general, LLIN distributions in the 2010 and 2013 resulted in significant decreases in malaria but distributions that occurred in 2016 and 2019 actually resulted in increased malaria. This is believed to be because of changes to the LLINs PNG received which resulted in the nets no longer working as they did in the past. It can only be hoped that the nets distributed in 2022 have a better impact than those of 2016 and 2019.

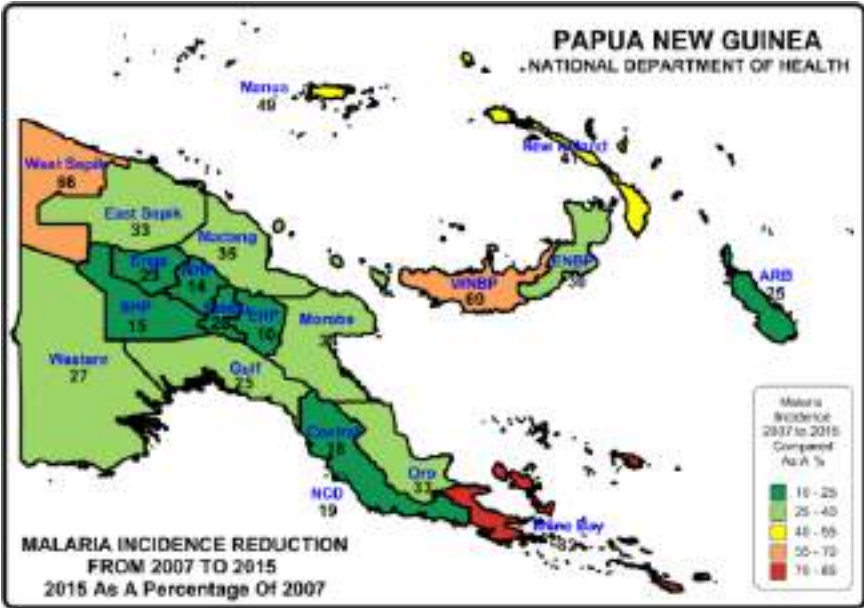


Fig.1 – Relative Reduction Of Malaria In Provinces Of PNG

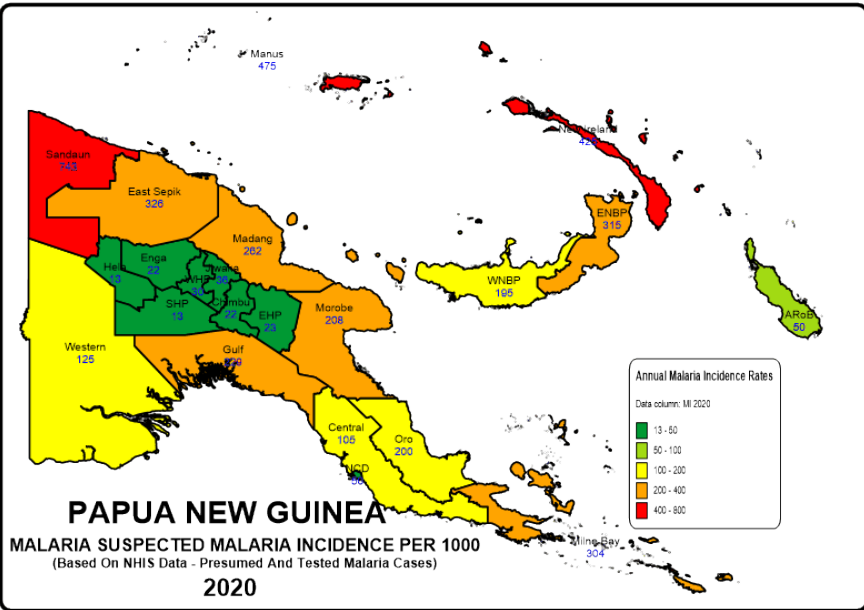


Fig.2 – Reported Malaria Incidence In 2020

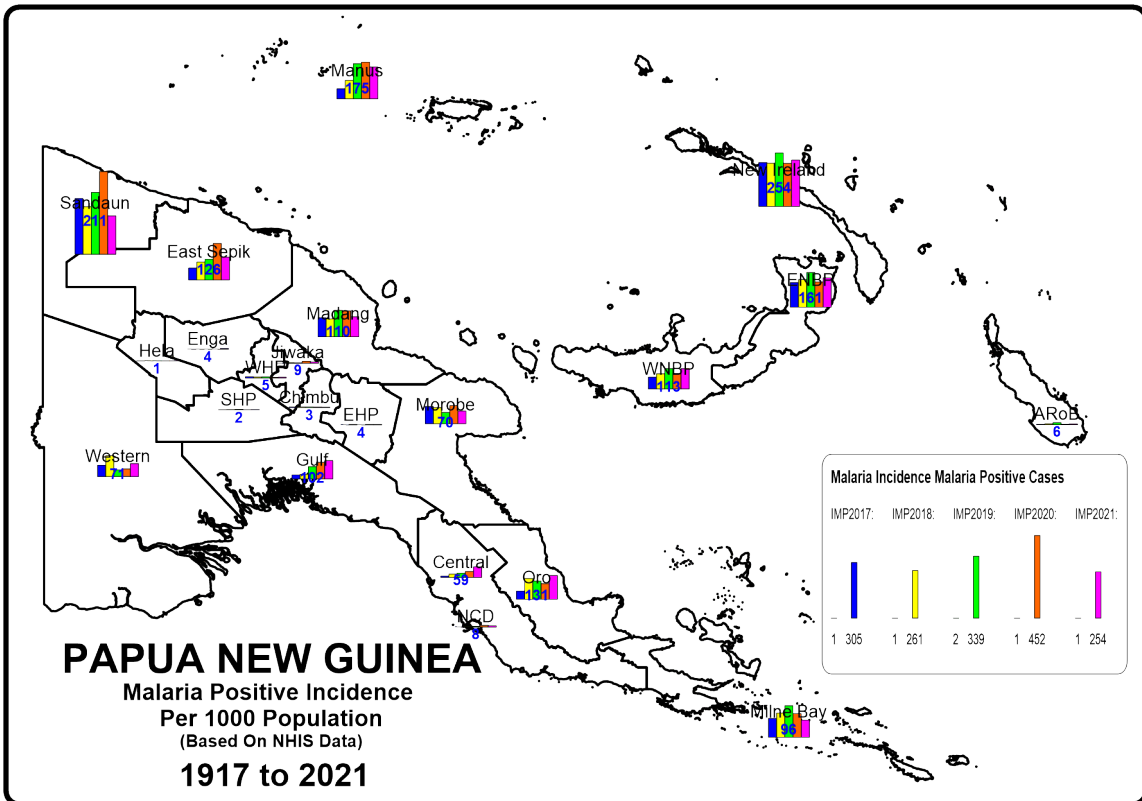


Fig. 3 - Reported Malaria Incidence In PNG From 2016 To 2020

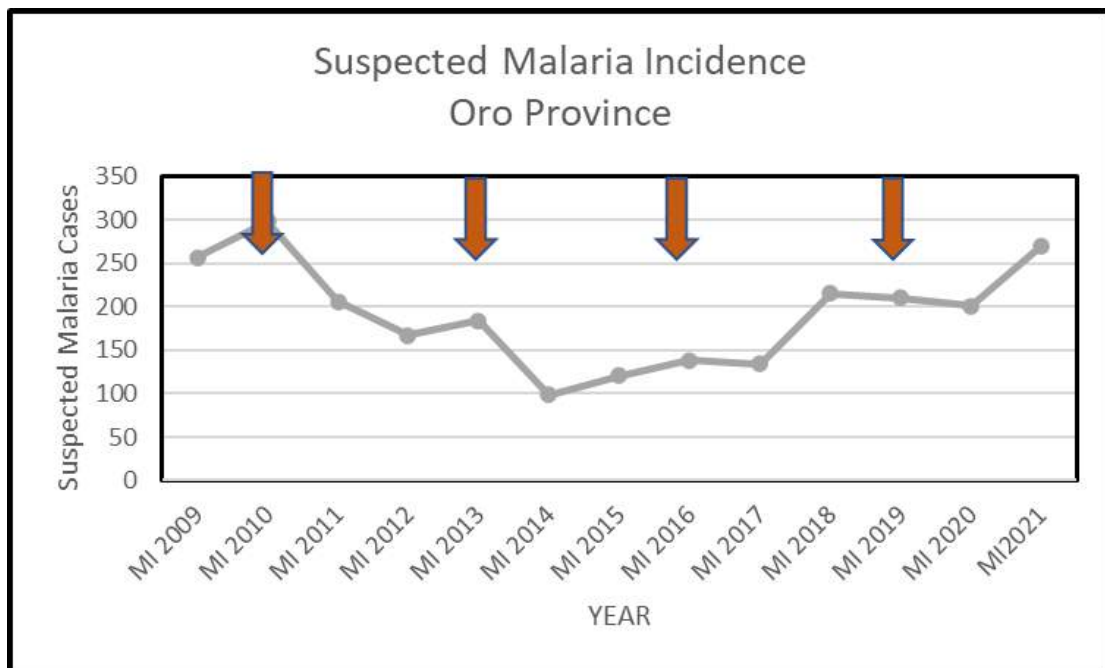
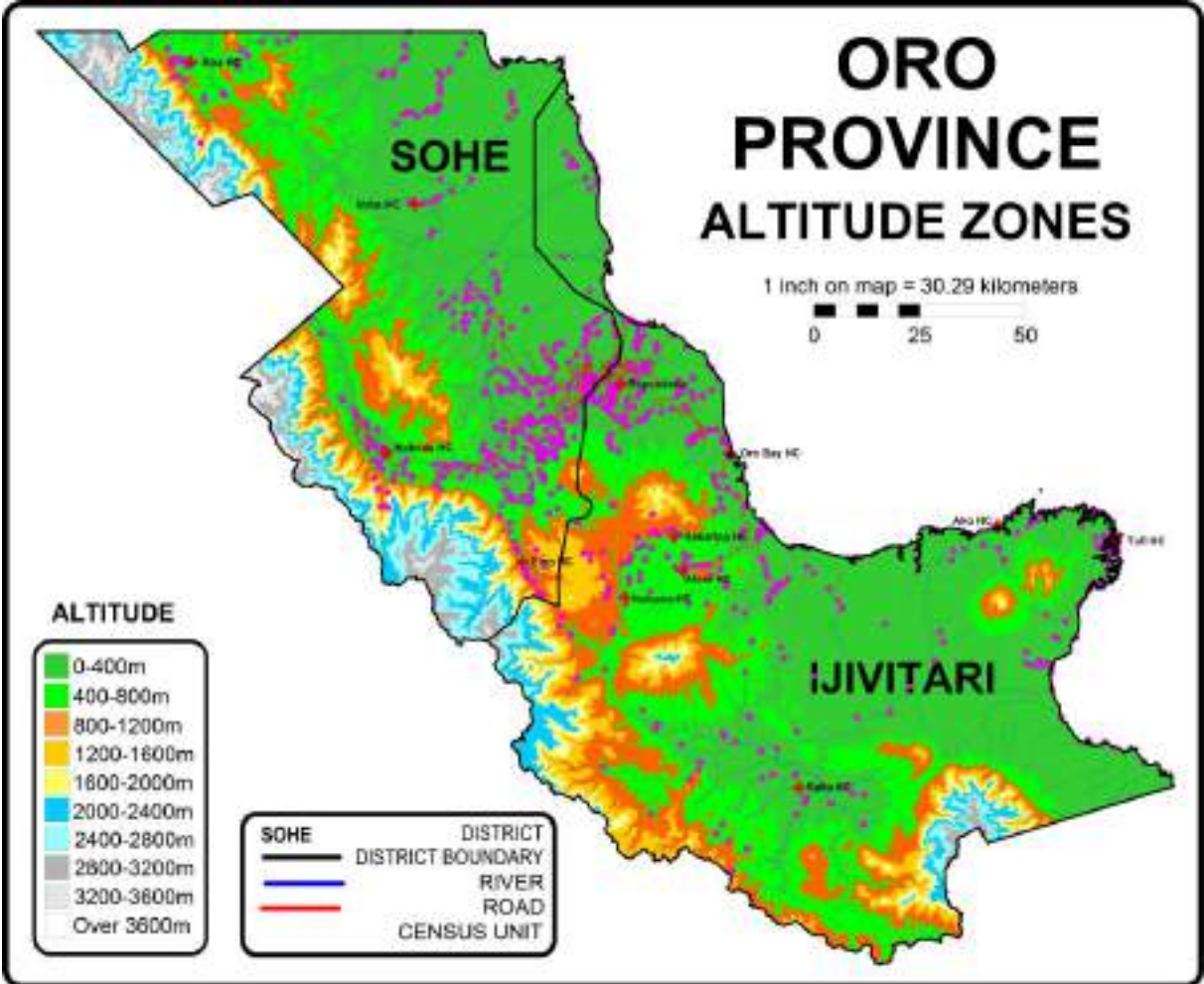


Fig. 4 – Malaria Incidence Versus Distribution Of Nets
Orange represents LLIN distributions done in Oro Province in 2010 and 2013, 2016 and 2019

Appendix Three - Malaria By Altitude

Oro Province is predominantly a low lying coastal province on the northern coast of mainland Papua New Guinea (PNG). Most of the province (99.5%) lies in areas below 1200 metres in altitude where malaria is considered endemic and most of population (83%) actually live in areas below 400m where malaria is at its worst in terms of transmission.

Fig. 1 Altitude Zones In Oro Province



Appendix Four – Other Photographs



LLIN Distributions In Saiho (Left) And Ako (Right)



Distributions In Oro Bay (Left) And Itokama (Right)



Distributions of LLIN in Sakarina (Left) And Tufi (Right)

OTHER PICTURES



Distribution From A Boat (Left) And Transport By Boat (Right) In Ambassi

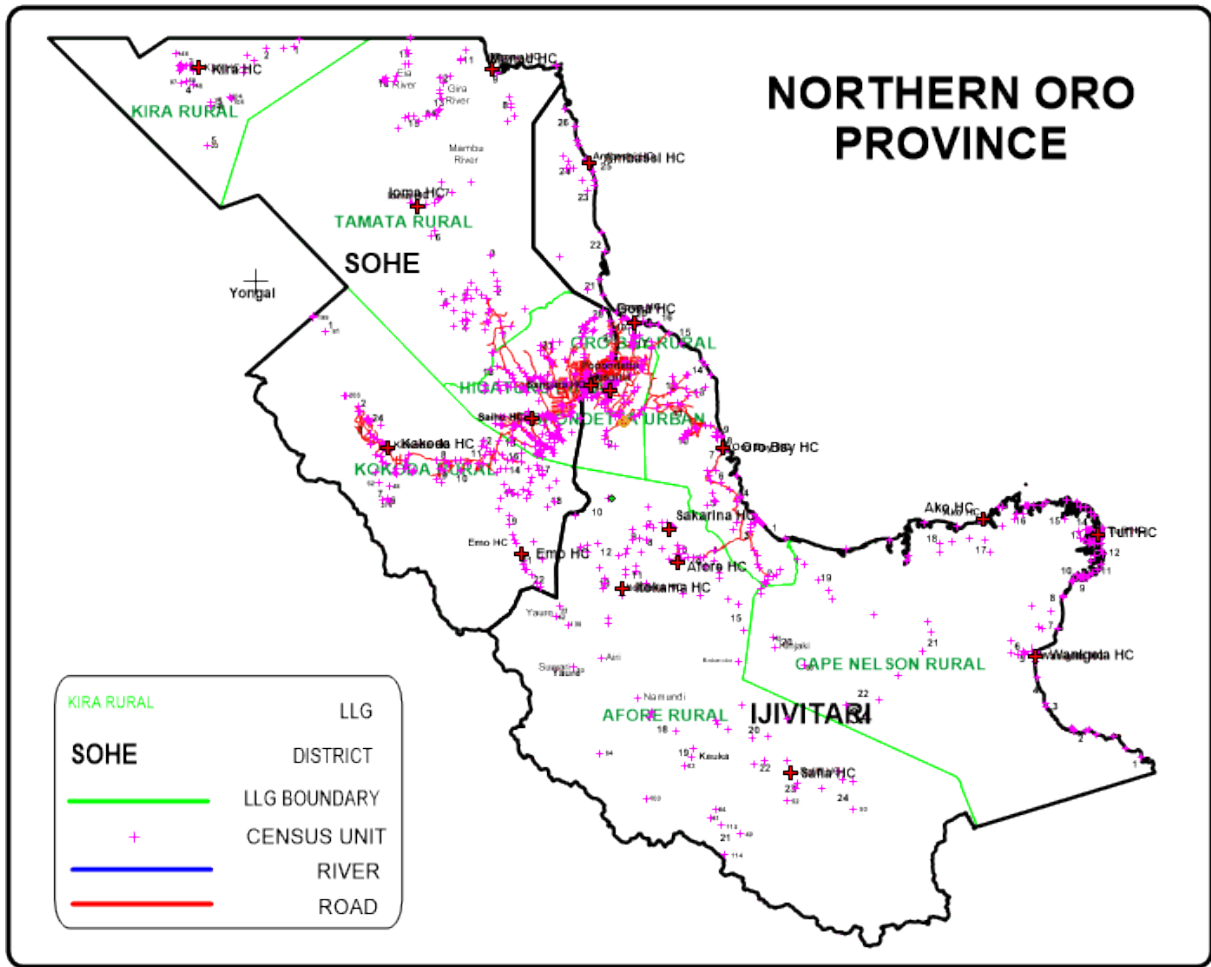


Net Delivery By Plane (Left) To Remote Areas And Pick Up By Helicopter (Right)



Trekking By Foot In Safi (Left) And Happy Lady In Itokama (Right)

Appendix Five - Map Of Oro Province Showing Census Points Of 2000 Census



Happy Customers In Manau (Left) And Tufi (Right)

ANNEX ONE

**Rotarians Against Malaria
Oro Province: Ijivitari Distict
LLIN Distribution Summary Sheet 2022**

LLG	Ward	Village	2022 Population Based On 2000 Census	2022 Population Based On 2019 Survey	Health Centre	Population Surveyed	House Holds Surveyed	Nets Issued	Date Of Distribution	Villages	Digicel	Bmobile	Houses With Radios	Radio Networks	Comments
Ijivitari District			148,777	148,777		147,211	25,537	74,441		451	254	82	4,500	289	
Oro Bay Rural			43,665	44,789		43,656	7,735	22,390		127	75	28	683	99	
1	Sariri Village		1,368	1,425		1,413	258	716		11	0	0	15		
	1 Gobera		107	204	Oro Bay HC	239	44	116	23.08.22	1	0	0	1	91.7FM	Road/Boat/Trekking
	2 Iwuji		230	196	Oro Bay HC	265	50	131	23.08.22	1	0	0	0	91.7FM	Road/Boat/Trekking
	3 Nembadi		190	140	Oro Bay HC	181	32	93	23.08.22	1	0	0	0	91.7FM	Road
	4 Sariri		72	210	Oro Bay HC	215	38	107	23.08.22	1	0	0	0	91.7FM	Road/Boat/Trekking
	5 Ginei		83	0	Oro Bay HC					1					Included Under Sariri
	6 Wai-E		57	137	Oro Bay HC	122	30	66	23.08.22	1	0	0	0	91.7FM	Road/Boat/Trekking
	7 Ungada		48	88	Oro Bay HC	70	16	35	23.08.22	1	0	0	0	91.7FM	Road/Boat/Trekking
	8 Gora		144	0	Oro Bay HC					1					Included Under Sariri
	9 Voika		188	0	Oro Bay HC					1					Included Under Sariri
	10 Yapani		74	251	Oro Bay HC					1					Included Under Bareji School
	11 Bareji School		173	200	Oro Bay HC	321	48	168	23.08.22	1	0	0	14	91.7FM	Road/Boat/Trekking
2	Gunimba Village		1,070	1,110		993	197	555		5	0	0	0		
	1 Gunimba		85	206	Oro Bay HC	103	16	49	23.08.22	1	0	0	0	91.7FM	Road
	2 Pongani		451	345	Oro Bay HC	286	55	145	23.08.22	1	0	0	0	91.7FM	Road
	3 Seboda		208	203	Oro Bay HC	218	37	110	23.08.22	1	0	0	0	91.7FM	Road
	4 Songade		214	218	Oro Bay HC	238	47	129	29.08.22	1	0	0	0	91.7FM	Sea
	5 Gave		112	137	Oro Bay HC	148	42	122	23.08.22	1	0	0	0	91.7FM	Road
3	Jegerakambo Village		1,210	877		1,170	221	608		8	0	0	0		
	1 Jeburugaiairi		96	0	Oro Bay HC										Non Existent
	2 Jegerakambo		74	259	Oro Bay HC	128	25	65	23.08.22	1	0	0	0	91.7FM	Road
	3 Mengade		109	0	Oro Bay HC	185	30	94	23.08.22	1	0	0	0	91.7FM	Road
	4 Puin		90	0	Oro Bay HC	110	19	61	23.08.22	1	0	0	0	91.7FM	Road
	5 Basada		129	154	Oro Bay HC	314	55	166	23.08.22	1	0	0	0	91.7FM	Road
	6 Kevi		138	200	Oro Bay HC	58	18	34	23.08.22	1	0	0	0	91.7FM	Road
	7 Doro Musa		212	0	Oro Bay HC					1					Non Existent
	8 Kari Kambo		127	118	Oro Bay HC	204	40	105	23.08.22	1	0	0	0	91.7FM	Road
	9 Mopide		46	146	Oro Bay HC	171	34	83	23.08.22	1	0	0	0	91.7FM	Road
	10 Asinde		63	0	Oro Bay HC										Non Existent
	11 Peresa		125	0	Oro Bay HC										Non Existent
4	Emo Village		1,937	1,682		1,659	331	868		3	0	0	0		
	1 Emo		608	539	Oro Bay HC	538	116	285	23.08.22	1	0	0	0	91.7FM	Road
	2 Endaduru		508	450	Oro Bay HC	501	100	264	23.08.22	1	0	0	0	91.7FM	Road
	3 Reibai		821	693	Oro Bay HC	620	115	319	23.08.22	1	0	0	0	91.7FM	Road
5	Banderi Village		1,457	1,461		1,257	208	596		6	4	1	3		
	1 Banderi		265	214	Oro Bay HC	184	33	89	23.08.22	1	1	1	0	91.7FM	Road
	2 Sigara		236	304	Oro Bay HC	239	37	112	23.08.22	1	0	0	0	91.7FM	Road/Trekking
	3 Beamatu		232	197	Oro Bay HC	142	20	74	23.08.22	1	1	0	0	91.7FM	Road/Trekking
	4 Boreara		83	84	Oro Bay HC	88	15	45	23.08.22	1	1	0	3	91.7FM	Road/Trekking
	5 Kohara		571	592	Oro Bay HC	526	91	237	23.08.22	1	0	0	0	91.7FM	Road/Trekking
	6 Togofu		70	70	Oro Bay HC	78	12	39	23.08.22	1	1	0	0	91.7FM	Road/Trekking
6	Waiwa Village		1,339	1,332		1,255	207	651		5	4	0	11		
	1 Borou		333	348	Oro Bay HC	231	38	116	23.08.22	1	1	0	0	91.7FM	Road
	2 Waiwa		486	469	Oro Bay HC	402	67	208	29.08.22	1	1	0	0	91.7FM	Road
	3 Ngemeno		74	0	Oro Bay HC	130	23	63	23.08.22	1	0	0	0	91.7FM	Road
	4 Parama		335	351	Oro Bay HC	297	43	160	23.08.22	1	1	0	11	91.7FM	Road
	5 Berambo		112	163	Oro Bay HC	195	36	104	23.08.22	1	1	0	0	91.7FM	Road
7	Beama Village		2,160	2,696		2,448	457	1,274		5	4	0	43		
	1 Beama		1,217	1,242	Oro Bay HC	1,377	298	739	29.08.22	1	1	0	20	91.7FM	Road
	2 Kopure		698	836	Oro Bay HC	599	88	293	29.08.22	1	1	0	21	91.7FM	Road
	3 Katereda H/C		144	281	Oro Bay HC	99	18	54	29.08.22	1	1	0	0	91.7FM	Road
	4 PNG Ports		42	338	Oro Bay HC	373	53	188	29.08.22	1	1	0	2	91.7FM	Road
	5 DPI Station		59	0	Oro Bay HC					1					Included Under DPI Station
8	Baberada Village		1,816	1,685		1,531	251	795		4	4	1	19		
	1 Baberada/Natatu		1,042	691	Oro Bay HC	635	134	343	30.08.22	1	1	1	19	91.7FM	Road
	2 Busega		516	618	Oro Bay HC	549	75	279	30.08.22	1	1	0	0	91.7FM	Road
	3 Arugasusu		158	187	Oro Bay HC	103	16	48	30.08.22	1	1	0	0	91.7FM	Road
	4 Eroro Com Sch		101	190	Oro Bay HC	244	26	125	30.08.22	1	1	0	0	91.7FM	Road
9	Dombada Village		2,188	2,316		2,207	386	1,048		3	3	0	20		
	1 Dombada		1,007	1,108	Oro Bay HC	922	167	414	25.08.22	1	1	0	10	91.7FM	Road
	2 Embogo		1,083	1,133	Oro Bay HC	1,222	203	604	25.08.22	1	1	0	10	91.7FM	Road
	3 Embogo H Sch		98	75	Oro Bay HC	63	16	30	25.08.22	1	1	0	0	91.7FM	Road
10	Hanakiro Village		2,368	2,599		2,402	444	1,210		7	7	1	21		
	1 Warisota		797	962	Oro Bay HC	866	161	435	21.08.22	1	1	0	4	91.7FM	Road
	2 Embi		372	325	Oro Bay HC	245	47	127	25.08.22	1	1	0	1	91.7FM	Road
	3 Hongarata		258	245	Oro Bay HC	242	45	120	25.08.22	1	1	0	15	91.7FM	Road
	4 Kurumbo		284	389	Oro Bay HC	300	49	148	25.08.22	1	1	0	0	91.7FM	Road
	5 Hanakiro		243	0	Oro Bay HC	209	43	108	25.08.22	1	1	0	0	91.7FM	Road
	6 Hanakiro 2		188	369	Oro Bay HC	268	50	133	25.08.22	1	1	0	0	91.7FM	Road
	7 Haugata		225	308	Oro Bay HC	272	49	139	25.08.22	1	1	1	1	91.7FM	Road
11	Kararata Village		1,753	4,238		4,969	859	2,624		8	8	8	228		
	1 Urio		352	1,006	Oro Bay HC	1,088	198	580	22.08.22	1	1	1	30	91.7FM	Road
	2 Poro		182	422	Oro Bay HC	577	100	311	22.08.22	1	1	1	5	91.7FM	Road
	3 Hombariri		370	441	Oro Bay HC	562	99	299	22.08.22	1	1	1	40	91.7FM	Road
	4 Kararata		320	485	Oro Bay HC	681	113	365	22.08.22	1	1	1	55	91.7FM	Road
	5 Sori		153	162	Oro Bay HC	279	49	138	22.08.22	1	1	1	45	91.7FM	Road
	6 Guguma		287	707	Oro Bay HC	560	74	289	22.08.22	1	1	1	38	91.7FM	Road

LLG	Ward	Village	2022 Population Based On 2000 Census	2022 Population Based On 2019 Survey	Health Centre	Population Surveyed	House Holds Surveyed	Nets Issued	Date Of Distribution	Villages	Digicel	Bmobile	Houses With Radios	Radio Networks	Comments
	7	Embi Blocks	90	289	Oro Bay HC	144	32	76	22.08.22	1	1	1	0	91.7FM	Road
		Sambogo Estate		725	Oro Bay HC	1,078	194	566	21.08.22	1	1	1	15	91.7FM	Road
12		Dobuduru Village	1,578	1,807		1,540	298	804		4	4	4	37		
	1	Ango	429	497	Oro Bay HC	525	87	261	27.08.22	1	1	1	16	91.7FM	Road
	2	Dobuduru	335	554	Oro Bay HC	335	71	181	27.08.22	1	1	1	2	91.7FM	Road
	3	Penubata	112	237	Oro Bay HC	188	30	99	27.08.22	1	1	1	0	91.7FM	Road
	4	Parahe Block	702	519	Oro Bay HC	492	110	263	27.08.22	1	1	1	19	91.7FM	Road
13		Barisara Village	2,856	3,333		3,178	603	1,600		5	5	5	73		
	1	Barisari	1,431	1,485	Oro Bay HC	1,475	261	762	24.08.22	1	1	1	27	91.7FM	Road
	2	Garuro	595	671	Oro Bay HC	648	121	320	26.08.22	1	1	1	12	91.7FM	Road
	3	Hanao	225	268	Oro Bay HC	174	37	85	26.08.22	1	1	1	4	91.7FM	Road
	4	Sorodigari	230	480	Oro Bay HC	437	85	214	26.08.22	1	1	1	15	91.7FM	Road
	5	Tanese	374	429	Oro Bay HC	444	99	219	26.08.22	1	1	1	15	91.7FM	Road
14		Siremi Village	1,926	2,081		2,094	352	1,111		5	5	5	30		
	1	Boreo	190	316	Oro Bay HC	236	41	127	30.08.22	1	1	1	5	91.7FM	Road
	2	Harigo	411	279	Oro Bay HC	295	50	156	30.08.22	1	1	1	4	91.7FM	Road
	3	Kendata	400	504	Oro Bay HC	452	86	248	30.08.22	1	1	1	4	91.7FM	Road
	4	Siremi	602	590	Oro Bay HC	631	97	324	30.08.22	1	1	1	13	91.7FM	Road
	5	Onagedataki	322	391	Oro Bay HC	480	78	256	30.08.22	1	1	1	4	91.7FM	Road
15		Buna Village	2,153	2,069		2,021	116	1,009		2	2	2	18		
	1	Buna	1,180	1,196	Oro Bay HC	1,324		663	28.08.22	1	1	1	6	91.7FM	Road
	2	Sanananda	974	873	Oro Bay HC	697	116	346	28.08.22	1	1	1	12	91.7FM	Road
16		Killerton Village	1,199	959		893	197	449		3	3	1	17		
	1	Garara	197	164	Gona HC	156	37	80	29.08.22	1	1	0	6	FM 90.7	Boat
	2	Killerton	604	358	Gona HC	344	79	179	29.08.22	1	1	0	11	FM 90.7	Boat
	3	Bagou	398	437	Gona HC	393	81	190	03.09.22	1	1	1		FM 90.7	Road
17		Otovejari Village	1,692	1,620		1,590	355	840		7	4	0	19		
	1	Ononda	534	436	Gona HC	457	98	233	30.08.22	1	1	0	0		Road
	2	Sebu	195	75	Gona HC	101	24	55	30.08.22	1	0	0	2	FM 90.7	Road
	3	Binjapada	284	165	Gona HC	174	46	101	30.08.22	1	1	0	4	FM 90.7	Road
	4	Mumburada	462	511	Gona HC	474	99	254	30-31.08.22	1	1	0	8	FM 90.7	Road
	5	Otovejari	35	180	Gona HC	279	65	140	31.08.22	1	0	0	2	FM 90.7	Road
	6	Borida	63	89	Gona HC	105	23	57	30.08.22	1	1	0	3	FM 90.7	Road
	7	Togorosusu	118	164	Gona HC					1					Abandoned (Natural Disaster)
18		Konje Village	1,444	1,145		1,050	233	554		7	7	0	57		
	1	Konje	904	596	Gona HC	459	99	248	30-31.08.22	1	1	0	18	FM 90.7	Road
	2	Bepore	350	28	Gona HC	50	9	26	30-31.08.22	1	1	0	3		Road
	3	Basabua	28	92	Gona HC	97	24	50	29-31.08.22	1	1	0	2	FM 90.7	Road
	4	Banumo	94	84	Gona HC	76	16	37	30-31.08.22	1	1	0	0	FM 90.7	Road
	5	Gombara	68	104	Gona HC	91	23	44	30-31.08.22	1	1	0	0		Road
		Saiwa		105	Gona HC	161	31	85	30-31.08.22	1	1	0	27	FM 90.7	Road
		New Site		135	Gona HC	116	31	64	30.08.22	1	1	0	7	FM 90.7	Road
19		Kausada Village	1,416	1,245		994	229	540		3	3	0	44		
	1	Gona	383	100	Gona HC	205	49	113	29.08.22	1	1	0	11	FM 90.7	Road/Boat
	2	Kausada	709	828	Gona HC	460	107	248	29.08.22	1	1	0	15	FM 90.7	Road/Boat
	3	Napapo	324	317	Gona HC	329	73	179	27.08.22	1	1	0	18	FM 90.7	Road/Boat
20		Jinanga Village	978	1,022		962	176	497		4	4	0	19		
	1	Kurou	606	643	Gona HC	609	112	317	27.08.22	1	1	0	11	FM 90.7	Boat
	2	Jinanga	94	21	Gona HC	10	3	6	27.08.22	1	1	0	1	FM 90.7	Boat
	3	Saroda	131	201	Gona HC	169	29	85	27.08.22	1	1	0	2	FM 90.7	Boat
	4	Gona Ang Missn	147	157	Gona HC	174	32	89	30-31.08.22	1	1	0	5	FM 90.7	Boat
21		Bakubari Village	1,584	1,597		1,581	258	790		3	3	0	6		
	1	Bakubari	812	769	Gona HC	756	131	390	25.08.22	1	1	0	4	FM 90.7	Boat
	2	Fufuda	508	703	Gona HC	679	95	319	26.08.22	1	1	0	0	FM 90.7	Road/Boat
	3	Urugari	265	124	Gona HC	146	32	81	25.08.22	1	1	0	2	FM 90.7	Boat
22		Batali	2,002	1,685		1,599	255	812		3	1	0	0		
	2	Batari	324	359	Ambasi HC	345	57	175	27.08.22	1	1	0	0		Boat
	3	Katuna	1,018	809	Ambasi HC	785	121	394	31.08.22	1	0	0	0		Boat
		Kurereda	661	517	Ambasi HC	469	77	243	31.08.22	1	0	0	0	FM 90.7	Boat
23		Oure Village	1,088	946		1,038	197	528		4	0	0	0		
	1	Ope	129	236	Ambasi HC	293	50	139	30.08.22	1	0	0	0		Boat/Walk
	2	Jinena	158	132	Ambasi HC	187	36	99	30.08.22	1	0	0	0		Boat/Walk
	3	Koira (Beanga)	333	288	Ambasi HC	330	58	172	30.08.22	1	0	0	0		Boat/Walk
	4	Todinas (Mora)	291	289	Ambasi HC	228	53	118	30.08.22	1	0	0	0		Boat/Walk
	5	Oure	177	0	Ambasi HC										Non Existant
24		Aure Village	1,755	1,299		1,219	200	616		3	0	0	0		
	1	Aure	748	584	Ambasi HC	557	93	278	01.09.22	1	0	0	0		Boat/Walk
	2	Begabari	814	543	Ambasi HC	535	86	269	01.09.22	1	0	0	0		Boat/Walk
	3	Jitami/Waitutu	193	172	Ambasi HC	127	21	69	01.09.22	1	0	0	0		Boat/Walk
25		Dewatutu Village	1,744	1,429		1,345	244	637		5	0	0	3		
	1	Ambasi	387	288	Ambasi HC	387	57	141	01.09.22	1	0	0	0		Boat
	2	Dewatutu	355	358	Ambasi HC	259	52	132	01.09.22	1	0	0	3		Walk
	3	Kainde	676	462	Ambasi HC	416	83	214	01.09.22	1	0	0	0		Boat/Walk
	4	Baretutu	129	156	Ambasi HC	189	38	101	01.09.22	1	0	0	0		Boat/Walk
	5	Ambasi Station	197	164	Ambasi HC	94	14	49	01.09.22	1	0	0	0		Boat/Walk
26		Bindari Village	1,582	1,131		1,248	203	658		4	0	0	0		
	1	Bindari	348	197	Ambasi HC	253	41	132	29.08.22	1	0	0	0		Boat
	2	Iwaie	744	575	Ambasi HC	623	97	333	30.08.22	1	0	0	0		Boat
	3	Ijina	214	133	Ambasi HC	158	28	84	29.08.22	1	0	0	0		Boat
	4	Taiya	276	225	Ambasi HC	214	37	109	29.08.22	1	0	0	0		Boat
				0											
Cape Nelson Rural			31,362	27,123		27,165	4,767	13,519		128	83	0	571	75	
1		Kewansasap Village	1,372	1,090		1,120	196	557		3	3	0	0		
	1	Kewansasap	619	374	Wanigela HC	366	69	180	27.08.22	1	1	0	0	FM 90.7	Boat
	2	Reaga	274	329	Wanigela HC	293	44	147	27.08.22	1	1	0	0	FM 90.7	Boat

LLG	Ward	Village	2022 Population Based On 2000 Census	2022 Population Based On 2019 Survey	Health Centre	Population Surveyed	House Holds Surveyed	Nets Issued	Date Of Distribution	Villages	Digicel	Bmobile	Houses With Radios	Radio Networks	Comments
	3	Gegerawa	479	387	Wanigela HC	461	83	230	27.08.22	1	1	0	0	FM 90.7	Boat
2		Marua Village	1,814	1,646		1,679	260	821		6	6	0	0		
	1	Airara	451	236	Wanigela HC	206	46	103	30.08.22	1	1	0	0	FM 90.7	Boat
	2	Marua No.2	241	102	Wanigela HC	172	23	86	30.08.22	1	1	0	0	FM 90.7	Boat
	3	Sinapa	269	336	Wanigela HC	346	46	164	30.08.22	1	1	0	0	FM 90.7	Boat
	4	Sinapara	464	296	Wanigela HC	322	46	157	30.08.22	1	1	0	0	FM 90.7	Boat
	5	Koniasi	256	400	Wanigela HC	402	67	199	30.08.22	1	1	0	0	FM 90.7	Boat
	6	Marua	133	276	Wanigela HC	231	32	112	30.08.22	1	1	0	0	FM 90.7	Boat
3		Uiaku Village	1,094	849		769	148	385		1	0	0	0		
	1	Uiaku	1,094	849	Wanigela HC	769	148	385	30.08.22	1	0	0	0	FM 90.7	Boat
4		Ganjiga Village	1,064	783		810	147	390		2	2	0	0		
	1	Ganjiga	687	500	Wanigela HC	493	93	246	30.08.22	1	1	0	0	FM 90.7	Boat
	2	Yuaku	376	283	Wanigela HC	317	54	144	01.09.22	1	1	0	0	FM 90.7	Boat
5		Rainu Village	3,379	2,556		2,740	600	1,299		12	12	0	0		
	1	Komabun	234	269	Wanigela HC	126	36	63	02.09.22	1	1	0	0	FM 90.7	Boat
	2	Oresan	223	101	Wanigela HC	81	14	40	01.09.22	1	1	0	0	FM 90.7	Boat
	3	Rainu	164	119	Wanigela HC	110	20	50	01.09.22	1	1	0	0	FM 90.7	Boat
	4	Maffa	169	144	Wanigela HC	202	50	92	02.09.22	1	1	0	0	FM 90.7	Boat
	5	Sarad Missn Statn	790	539	Wanigela HC	607	128	281	02.09.22	1	1	0	0	FM 90.7	Boat
	6	Waiug	322	231	Wanigela HC	212	50	96	02.09.22	1	1	0	0	FM 90.7	Boat
	7	Fofu	199	114	Wanigela HC	119	28	57	01.09.22	1	1	0	0	FM 90.7	Boat
	8	Inaram	169	234	Wanigela HC	178	39	89	02.09.22	1	1	0	0	FM 90.7	Boat
	9	Dirudadan	578	509	Wanigela HC	541	122	250	02.09.22	1	1	0	0	FM 90.7	Boat
	10	Tekwakwan	105	71	Wanigela HC	53	10	25	01.09.22	1	1	0	0	FM 90.7	Boat
	11	Utan Plantation	427	225	Wanigela HC	379	75	190	02.09.22	1	1	0	0	FM 90.7	Boat
	12	Kikinu		NEW	Wanigela HC	132	28	66	02.09.22	1	1	0	0	FM 90.7	Boat
6		Koreaf Village	851	766		793	141	356		2	2	0	0		
	1	Koreaf	289	297	Wanigela HC	310	50	137	02.09.22	1	1	0	0	FM 90.7	Boat
	2	Naukwate	562	469	Wanigela HC	483	91	219	02.09.22	1	1	0	0	FM 90.7	Boat
7		Ajoa Village	1,567	1,150		1,154	251	572		4	4	0	0		
	1	Ajoa	808	547	Wanigela HC	627	133	310	31.08.22	1	1	0	0	FM 90.7	Boat
	2	Kikibator	195	201	Wanigela HC	144	32	70	31.08.22	1	1	0	0	FM 90.7	Boat
	3	Ajoa Comm Sch	50	40	Wanigela HC	43	9	21	31.08.22	1	1	0	0	FM 90.7	Boat
	4	Kepple Point	514	363	Wanigela HC	340	77	171	31.08.22	1	1	0	0	FM 90.7	Boat
8		Itoto Village	1,186	1,027		1,044	199	514		3	3	0	0		
	1	Gigori	422	327	Wanigela HC	265	50	136	31.08.22	1	1	0	0	FM 90.7	Boat
	2	Uwe	431	339	Wanigela HC	290	50	140	31.08.22	1	1	0	0	FM 90.7	Boat
	3	Marakof	256	360	Wanigela HC	489	99	238	31.08.22	1	1	0	0	FM 90.7	Boat
	4	Goiya	42	0	Wanigela HC	0	0	0							Non Existant
	5	Uwe Comm Sch	35	0	Wanigela HC	0	0	0							Non Existant
9		Giriwa Village	1,112	962		917	162	462		5	5	0	0		
	1	Kabubu	232	181	Wanigela HC	181	30	91	31.08.22	1	1	0	0	FM 90.7	Boat
	2	Marasa	484	419	Wanigela HC	356	63	178	31.08.22	1	1	0	0	FM 90.7	Boat
	3	Fanebara	166	195	Wanigela HC	214	40	108	31.08.22	1	1	0	0	FM 90.7	Boat
	4	Itonomota	57	0	Wanigela HC										Non Existant
	5	Tomomon	46	48	Wanigela HC	46	9	23	31.08.22	1	1	0	0	FM 90.7	Boat
	6	Kirakira	127	120	Wanigela HC	120	20	62	31.08.22	1	1	0	0	FM 90.7	Boat
10		Managa Village	1,160	968		908	158	462		8	8	0	79		
	1	Jubadi	68	82	Tufi HC	46	10	24	24.08.22	1	1	0	5		Boat
	2	Bibiyad	66	95	Tufi HC	84	13	45	24.08.22	1	1	0	10		Boat
	3	Jukuwataia	26	42	Tufi HC	37	6	19	24.08.22	1	1	0	0		Boat
	4	Managa	109	99	Tufi HC	72	11	35	24.08.22	1	1	0	8		Boat
	5	Sinifara	101	60	Tufi HC	47	7	24	24.08.22	1	1	0	4		Boat
	6	Siu	155	132	Tufi HC	148	23	76	24.08.22	1	1	0	11		Boat
	7	Utukwafu	558	391	Tufi HC	406	75	201	24.08.22	1	1	0	34		Boat
	8	Kuna	77	67	Tufi HC	68	13	38	24.08.22	1	1	0	7		Boat
11		Jebo Village	1,679	1,224		1,174	206	605		5	5	0	97		
	1	Barabara	311	162	Tufi HC	173	32	88	24.08.22	1	1	0	16		Boat
	2	Bauwame	357	187	Tufi HC	174	30	88	24.08.22	1	1	0	22		Boat
	3	Jebo	284	278	Tufi HC	249	43	124	24.08.22	1	1	0	18		Boat
	4	Orotoaba	352	316	Tufi HC	309	55	161	24.08.22	1	1	0	19		Boat
	5	Tainabuna	374	281	Tufi HC	269	46	144	24.08.22	1	1	0	22		Boat
12		Baga Village	1,429	989		1,049	179	538		9	9	0	100		
	1	Baga	486	285	Tufi HC	314	50	157	25.08.22	1	1	0	29		Boat
	2	Kabuni	177	137	Tufi HC	120	20	60	25.08.22	1	1	0	9		Boat
	3	Karikari	155	75	Tufi HC	70	11	35	25.08.22	1	1	0	7		Boat
	4	Konabu	61	69	Tufi HC	73	12	37	25.08.22	1	1	0	5		Boat
	5	Leilioa	109	99	Tufi HC	108	21	56	25.08.22	1	1	0	8		Boat
	6	Goodenough	118	59	Tufi HC	63	8	32	25.08.22	1	1	0	8		Boat
	7	Mano	33	40	Tufi HC	62	10	31	25.08.22	1	1	0	8		Boat
	8	Komoa	195	136	Tufi HC	158	32	85	25.08.22	1	1	0	25		Boat
	9	Kurinka	94	89	Tufi HC	81	15	45	25.08.22	1	1	0	1		Boat
13		Kwawe Village	1,029	728		805	152	421		7	7	0	79		
	1	Iagirua	175	112	Tufi HC	87	18	46	26.08.22	1	1	0	12		Boat
	2	Koje	414	263	Tufi HC	373	66	194	25.08.22	1	1	0	36		Boat
	3	Konedobu	59	0	Tufi HC	15	5	7	26.08.22	1	1	0	4		Boat
	4	Kwawe	55	29	Tufi HC	35	7	19	26.08.22	1	1	0	6		Boat
	5	Rabade	79	53	Tufi HC	94	19	47	26.08.22	1	1	0	10		Boat
	6	Natade	85	0	Tufi HC	99	18	50	26.08.22	1	1	0	5		Boat
	7	Kofure	162	272	Tufi HC	102	19	58	26.08.22	1	1	0	6		Boat
14		Sefoa Village	1,116	867		715	128	381		8	8	0	58		
	1	Bekoiana	147	71	Tufi HC	58	10	30	25.08.22	1	1	0	5		Boat
	2	Foduma	125	81	Tufi HC	67	9	33	25.08.22	1	1	0	6		Boat
	3	Kanavetu	149	177	Tufi HC	125	20	60	27.08.22	1	1	0	7		Boat
	4	Kasiawa	190	116	Tufi HC	115	30	77	27.08.22	1	1	0	10		Boat

LLG	Ward	Village	2022 Population Based On 2000 Census	2022 Population Based On 2019 Survey	Health Centre	Population Surveyed	House Holds Surveyed	Nets Issued	Date Of Distribution	Villages	Digicel	Bmobile	Houses With Radios	Radio Networks	Comments
	5	Kikita	42	42	Tufi HC	32	8	17	25.08.22	1	1	0	3		Boat
	6	Foduma No.2	153	96	Tufi HC	88	17	45	25.08.22	1	1	0	7		Boat
	7	Jojo	201	134	Tufi HC	150	20	75	25.08.22	1	1	0	12		Boat
	8	Sefoa Mission Stn	109	149	Tufi HC	80	14	44	25.08.22	1	1	0	8		Boat
15		Sinei Village	1,779	1,651		1,636	277	817		7	7	0	81		
	1	Givide	214	150	Tufi HC	138	18	69	24.08.22	1	1	0	5		Boat
	2	Kato Kato	127	154	Tufi HC	168	31	84	24.08.22	1	1	0	31		Boat
	3	Koruwe	265	294	Tufi HC	307	44	151	27.08.22	1	1	0	0		Boat
	4	Kwafurinali/Kwapulina	372	336	Tufi HC	304	57	152	24.08.22	1	1	0	17		Boat
	5	Sinei	171	143	Tufi HC	161	39	82	24.08.22	1	1	0	0		Boat
	6	Teniaru	223	222	Tufi HC	219	39	104	24.08.22	1	1	0	0		Boat
	7	Tumari	407	353	Tufi HC	339	49	175	24.08.22	1	1	0	28		Boat
16		Berebona Villages 1 & 2	1,471	1,404		1,358	220	671		9	0	0	0		
	1	Angorogo	223	184	Ako HC	162	28	80	30.08.22	1	0	0	0	FM 90.7	Boat
	2	Bambiti	109	140	Ako HC	151	27	76	30.08.22	1	0	0	0	FM 90.7	Boat
	3	Berebona 1 & 2	497	486	Ako HC	447	73	225	02.09.22	1	0	0	0	FM 90.7	Boat
	4	Fofoma	101	237	Ako HC	271	42	127	02.09.22	1	0	0	0	FM 90.7	Boat
	5	Founa	260	357	Ako HC	327	50	163	02.09.22	1	0	0	0	FM 90.7	Boat
	6	llamaroro	53	0	Ako HC					1					Included Under Fofoma
	7	Kaparuru	61	0	Ako HC					1					Included Under Fofoma
	8	Natukwabo	131	0	Ako HC					1					Included Under Fofoma
	9	Berebona	35	0	Ako HC					1					Included Under Berebona 1&2
17		Ako Village	2,254	2,477		2,424	445	1,181		10	0	0	0		
	1	Ako	475	481	Ako HC	490	85	241	01.09.22	1	0	0	0	FM 90.7	Boat
	2	Gobe	383	414	Ako HC	430	79	212	30.08.22	1	0	0	0	FM 90.7	Boat
	3	Kuruaku	171	210	Ako HC	178	32	88	01.09.22	1	0	0	0	FM 90.7	Trek
	4	Mafuia	337	293	Ako HC	255	50	126	30.08.22	1	0	0	0	FM 90.7	Boat/Trek
	5	Tumina	81	163	Ako HC	132	19	66	30.08.22	1	0	0	0	FM 90.7	Boat
	6	Oropu	182	115	Ako HC	121	23	53	01.09.22	1	0	0	0	FM 90.7	Trek
	7	Monganai	359	496	Ako HC	495	100	241	30.08.22	1	0	0	0	FM 90.7	Boat/Trek
	8	Gave	212	306	Ako HC	323	57	154	30.08.22	1	0	0	0	FM 90.7	Boat/Trek
	9	Mongana Com Sch	33	0	Ako HC					1					Included Under Monganai
	10	Ako Com Sch	22	0	Ako HC					1					Included Under Tumina
18		Foru Village	1,784	2,048		1,823	267	943		8	0	0	0		
	1	Bendorode	179	325	Ako HC	260	36	126	31.08.22	1	0	0	0	FM 90.7	Boat
	2	Foru No. 1	427	359	Ako HC	345	49	216	03.09.22	1	0	0	0	FM 90.7	Boat
	3	Foru No. 2	368	390	Ako HC	360	48	178	03.09.22	1	0	0	0	FM 90.7	Boat
	4	Erika	236	323	Ako HC	225	32	108	31.08.22	1	0	0	0	FM 90.7	Boat
	5	Sayio	114	0	Ako HC					1					Included Under Erika
	6	Karesovu	142	180	Ako HC	188	38	98	31.08.22	1	0	0	0	FM 90.7	Boat
	7	Sebaga	317	275	Ako HC	293	50	143	31.08.22	1	0	0	0	FM 90.7	Boat
	8	Jobu		NEW	Ako HC	152	14	74	31.08.22	1	0	0	0	FM 90.7	Boat
19		Karaisa Village	1,409	1,240		1,313	189	667		7	0	0	0		
	1	Badaide	118	96	Ako HC	129	17	69	01.09.22	1	0	0	0	91.7FM	Boat
	2	Karaisa	464	448	Oro Bay HC2	519	79	260	29.08.22	1	0	0	0	91.7FM	Boat
	3	Goworode	188	211	Ako HC	182	22	94	31.08.22	1	0	0	0	91.7FM	Boat
	4	Goworode 2	109	0	Ako HC					1					Included Under Goworode
	5	Moiavi	153	149	Ako HC	194	21	99	31.08.22	1	0	0	0	91.7FM	Boat
	6	Momoioogo	280	211	Ako HC	289	50	145	03.09.22	1	0	0	0	91.7FM	Boat/Trek
	7	Koipade	96	125	Ako HC					1					Included Under Karaisa
20		Kinjaki Village	751	554		690	123	351		4	0	0	0		
	1	Kinjaki	352	177	Oro Bay HC2	284	46	143	17.08.22	1	0	0	0	91.7FM	Road/Boat/Treking
	2	Korara	173	176	Oro Bay HC2	146	27	76	17.08.22	1	0	0	0	91.7FM	Road/Boat/Treking
	3	Babaru	68	0	Oro Bay HC2	134	26	69	17.08.22	1	0	0	0	91.7FM	Road/Trek
	4	Botewari	158	201	Oro Bay HC2	126	24	63	17.08.22	1	0	0	0	91.7FM	Road/Boat/Treking
21		Guruguru Village	455	349		592	65	298		2	0	0	0		
	1	Budorode	133	116	Ako HC	142	19	76	03-04.09.22	1	0	0	0	91.7FM	Boat/Trek
	2	Guruguru	208	233	Ako HC	450	46	222	03.09.22	1	0	0	0	91.7FM	Boat
	3	Kummoware	114	0	Ako HC										Included Under Guruguru
22		Embessa Village	972	1,197		1,097	155	549		4	0	0	0		
	1	Embesa	545	612	Ako HC	568	75	279	05-06.09.22	1	0	0	0	91.7FM	Boat/Trek
	2	Kakasa	96	244	Ako HC	148	28	82	03.09.22	1	0	0	0	91.7FM	Boat/I Trek
	3	Taruma	125	230	Ako HC	263	35	129	05-06.09.22	1	0	0	0	91.7FM	Boat/Trek
	4	Musasa	206	112	Ako HC	118	17	59	04.09.22	1	0	0	0	91.7FM	Boat/Trek
23		Tufi Government Station	637	598		555	99	279		2	2	0	77		
	1	Tufi Govt Station	243	278	Tufi HC	298	49	157	26.08.22	1	1	0	49	91.7FM	Boat
	2	Tufi Govt Station	394	319	Tufi HC	257	50	122	26.08.22	1	1	0	28	91.7FM	Boat
				0											
Afore Rural			30,274	26,055		24,765	4,187	12,631		108	33	0	475	53	
1		Yoivi Village	2,344	2,105		2,022	385	1,036		9	8	0	0		
	1	Bua	212	90	Afore HC	82	15	41	22.08.22	1	1	0	0		Road
	2	Marasi	635	643	Afore HC	579	102	297	22.08.22	1	0	0	0		Road/Trek
	3	Ondoro	162	205	Afore HC	224	39	125	22.08.22	1	1	0	0		Road
	4	Yoivi	471	422	Afore HC	274	61	140	22.08.22	1	1	0	0		Road/Trek
	5	Umbara	278	165	Afore HC	192	43	97	22.08.22	1	1	0	0		Road/Trek
	6	Manusi	359	379	Afore HC	318	62	151	22.08.22	1	1	0	0		Road
	7	Damaral	118	100	Afore HC	196	30	103	22.08.22	1	1	0	0		Road
	8	Bioil	109	101	Afore HC	92	21	47	23.08.22	1	1	0	0		Road/Trek
	9	New Area		NEW	Afore HC	65	12	35	22.08.22	1	1	0	0		Road/Trek
2		Niniuri Village	2,283	1,865		1,626	277	845		9	8	0	4		
	1	Afore	241	218	Afore HC	290	47	156	23.08.22	1	1	0	0		Road
	2	Niniuri	116	133	Afore HC	80	14	41	23.08.22	1	1	0	0		Road
	3	Semahara	223	252	Afore HC	178	35	81	23.08.22	1	1	0	2		Road/Trek
	4	Korokoro	92	84	Afore HC	84	18	46	23.08.22	1	1	0	0		Road/Trek
	5	Afore Blocks	455	225	Afore HC	299	54	154	23.08.22	1	1	0	1		Road

LLG	Ward	Village	2022 Population Based On 2000 Census	2022 Population Based On 2019 Survey	Health Centre	Population Surveyed	House Holds Surveyed	Nets Issued	Date Of Distribution	Villages	Digicel	Bmobile	Houses With Radios	Radio Networks	Comments
	6	Ogan 1	98	135	Afore HC	222	39	115	23.08.22	1	1	0	1		Road
	7	Ogan 2	133	184	Afore HC					1					Included Under Ogan 1
	8	Basape	232	217	Afore HC	214	33	112	23.08.22	1	1	0	0		Road
	9	Afore Govt Station	411	378	Afore HC	259	37	140	23.08.22	1	1	0	0		Road
	10	Boikiki Plantaion	280	38	Afore HC										Plantation closed
3		Kawowoki Village	969	1,055		991	162	528		2	2	0	4		
	1	Kawowoki	969	747	Afore HC	688	112	367	24.08.22	1	1	0	4		Road
		Dareki		308	Afore HC	303	50	161	23.08.22	1	1	0	0		Road
4		Kaura Village	1,571	1,299		1,222	187	606		2	2	0	44		
	1	Awaru	709	625	Sakarina HC	595	81	287	27.08.22	1	1	0	36	90.7 FM	Road
	2	Kaura	862	674	Sakarina HC	627	106	319	27.08.22	1	1	0	8	90.7 FM	Road
5		Siuarani Village	1,654	1,377		1,309	204	663		3	1	0	3		
	1	Wumba/Siyurana	1,654	1,377	Sakarina HC	1,079	163	542	27.08.22	1	1	0	3	90.7 FM	Road
		Sigara		NEW	Sakarina HC	140	26	75	28.08.22	1	0	0	0	0	Trek
		Siana		NEW	Sakarina HC	90	15	46	28.08.22	1	0	0	0	0	Trek
6		Kowena Village	1,777	1,437		1,437	207	743		3	3	0	9		
	1	Kweno	1,241	930	Sakarina HC	962	141	502	27.08.22	1	1	0	2	90.7 FM	Road
	2	Sila	396	355	Sakarina HC	315	43	161	27.08.22	1	1	0	3	90.7 FM	Road
	3	Yumara	35	0	Sakarina HC										Non Existant
	4	Sakarina Mission Station	105	152	Sakarina HC	160	23	80	27.08.22	1	1	0	4	90.7 FM	Road
7		Dea Village	2,149	1,818		1,700	298	836		4	4	0	4		
	1	Dea	556	512	Sakarina HC	419	61	195	28.08.22	1	1	0	0	90.7 FM	Road
	2	Tabuane	838	670	Sakarina HC	696	135	340	28.08.22	1	1	0	2	90.7 FM	Road
	3	Ugunomo	700	549	Sakarina HC	470	87	245	28.08.22	1	1	0	1	90.7 FM	Road
	4	Dea Comm School	55	88	Sakarina HC	115	15	56	28.08.22	1	1	0	1	90.7 FM	Road
8		Siribu Village	956	1,020		923	127	428		1	1	0	3		
	1	Siribu	956	1,020	Sakarina HC	923	127	428	28.08.22	1	1	0	3	90.7 FM	Road
9		Natanga Village	1,773	1,513		1,345	205	670		4	4	0	3		
	1	Kiara	521	396	Sakarina HC	407	60	205	28.08.22	1	1	0	1	90.7 FM	Road/Trek
	2	Natanga	702	567	Sakarina HC	462	65	231	28.08.22	1	1	0	2	90.7 FM	Road/Trek
	3	Jorura	508	477	Sakarina HC	407	67	199	28.08.22	1	1	0	0	90.7 FM	Road
	4	Kajo	42	74	Sakarina HC	69	13	35	28.08.22	1	1	0	0	90.7 FM	Road
10		Gora Village	1,462	1,203		1,291	156	645		4	0	0	16		
	1	Gora	455	344	Sakarina HC	440	74	218	28.08.22	1	0	0	9	90.7 FM	Road/Trek
	2	Gorabuna	506	190	Sakarina HC	413	32	201	28.08.22	1	0	0	4	90.7 FM	Road/Trek
	3	Kero	254	326	Sakarina HC	438	50	226	28.08.22	1	0	0	3		Road/Trek
	4	Gora Comm School	247	344	Sakarina HC					1					Included under Gora
11		Tahama Village	1,528	1,191		1,162	193	597		5	0	0	51		
	1	Koruwo	510	499	Itokama HC	430	78	223	31.08.22	1	0	0	22		Air/Trek
	2	Tahama	665	496	Itokama HC	482	72	243	30.08.22	1	0	0	26		Air/Trek
	3	Jawae	118	102	Itokama HC	61	10	31	31.08.22	1	0	0	0		Air/Trek
	4	Kaivitama	144	94	Itokama HC	129	23	70	30.08.22	1	0	0	3		Air/Trek
	5	Bareji	90	0	Itokama HC	60	10	30	31.08.22	1	0	0	0		Air/Trek
12		Umborora Village	1,565	1,387		1,296	207	670		7	0	0	84		
	1	Umbuwara	333	263	Itokama HC	251	39	131	30.08.22	1	0	0	17		Air/Trek
	2	Sagamaisa (Samasi)	204	124	Itokama HC	108	26	57	30.08.22	1	0	0	11		Air/Trek
	3	Arafo	125	130	Itokama HC	142	24	74	30.08.22	1	0	0	4		Air/Trek
	4	Dudoim	206	185	Itokama HC	183	29	98	30.08.22	1	0	0	14		Air/Trek
	5	Anatua 1	120	265	Itokama HC	246	34	123	30.08.22	1	0	0	15		Air/Trek
	6	Anatua 2	269	103	Itokama HC	90	12	45	30.08.22	1	0	0	5		Air/Trek
	7	Gazot	309	317	Itokama HC	276	43	142	30.08.22	1	0	0	18		Air/Trek
13		Kokoro Village	1,184	779		789	122	406		6	0	0	32		
	1	Kokoro	284	162	Itokama HC	220	37	114	30.08.22	1	0	0	10		Air/Trek
	2	Kuai	322	175	Itokama HC	162	26	80	30.08.22	1	0	0	0		Air/Trek
	3	Serepuna	293	239	Itokama HC	212	27	109	30.08.22	1	0	0	13		Air/Trek
	4	Nizui	61	92	Itokama HC	75	15	40	30.08.22	1	0	0	2		Air/Trek
	5	Nibaeba	101	28	Itokama HC	35	5	18	30.08.22	1	0	0	2		Air/Trek
	6	Buabufu	92	83	Itokama HC	85	12	45	30.08.22	1	0	0	5		Air/Trek
	7	Siriate	31	0	Itokama HC										Non Existant
14		Ufia Village	1,639	1,252		1,170	210	598		4	0	0	57		
	1	Itokama	834	624	Itokama HC	589	110	302	29.08.22	1	0	0	34		Air
	2	Ufia	212	183	Itokama HC	157	27	79	29.08.22	1	0	0	9		Air/Trek
	3	Umuwate	197	165	Itokama HC	158	28	82	29.08.22	1	0	0	4		Air/Trek
	4	Naukuanane	396	279	Itokama HC	266	45	135	29.08.22	1	0	0	10		Air/Trek
15		Tomal Village	1,420	1,420		1,444	264	720		6	0	0	0		
	1	Gewoia	326	427	Afore HC	444	80	229	19.08.22	1	0	0	0		Road/Trek
	2	Toma	50	304	Afore HC	301	48	146	18.08.22	1	0	0	0		Trek
	3	Orara	96	74	Afore HC	85	19	43	19.08.22	1	0	0	0		Road/Trek
	4	Manana	228	244	Afore HC	205	45	103	19.08.22	1	0	0	0		Road/Trek
	5	Bariri	591	275	Afore HC	281	49	135	18.08.22	1	0	0	0		Trek
	6	Babarobo	129	96	Afore HC	128	23	64	19.08.22	1	0	0	0		Road/Trek
16		Airi Village	260	208		184	34	98		1	0	0	8		
	1	Aiari	260	208	Itokama HC	184	34	98	30.08.22	1	0	0	8		Trek
17		Yaure Village	440	271		270	46	142		4	0	0	15		
	1	Yaure	208	84	Itokama HC	83	14	44	31.08.22	1	0	0	5		Trek
	2	Suwari	112	65	Itokama HC	59	10	31	31.08.22	1	0	0	2		Trek
	3	Baratana	68	71	Itokama HC	76	12	38	31.08.22	1	0	0	5		Trek
	4	Anei	53	50	Itokama HC	52	10	29	31.08.22	1	0	0	3		Trek
18		Namundi Village	648	537		529	98	264		3	0	0	7		
	1	Sibia	225	213	Safia HC	195	31	100	02.09.22	1	0	0	1	NBC	Air/Trek
	2	Namundi	320	324	Safia HC	306	61	151	02.09.22	1	0	0	6	NBC	Air/Trek
	3	Marude	103	0	Safia HC	28	6	13	02.09.22	1	0	0	0	NBC	Air/Trek
19		Sinua Village	622	501		402	119	214		5	0	0	14		
	1	Awala (Kaera)	109	137	Safia HC	129	49	71	02.09.22	1	0	0	10	NBC	Air/Trek
	2	Sinua (Moikodi)	144	93	Safia HC	76	20	40	02.09.22	1	0	0	3	NBC	Air/Trek

LLG	Ward	Village	2022 Population Based On 2000 Census	2022 Population Based On 2019 Survey	Health Centre	Population Surveyed	House Holds Surveyed	Nets Issued	Date Of Distribution	Villages	Digicel	Bmobile	Houses With Radios	Radio Networks	Comments
	3	Part Inuwake	160	116	Safia HC	49	14	25	02.09.22	1	0	0	0	NBC	Air/Trek
	4	Llama (Omudi)	123	83	Safia HC	84	21	47	02.09.22	1	0	0	0	NBC	Air/Trek
	5	Ariari (Baruwake)	85	71	Safia HC	64	15	31	02.09.22	1	0	0	1	NBC	Air/Trek
20		Moro Village	1,197	1,553		1,464	290	771		8	0	0	45		
	1	Koira	274	349	Safia HC	394	84	206	30.08.22	1	0	0	15	NBC	Air/Trek
	2	Moro (Urodi)	267	232	Safia HC	207	27	105	30.08.22	1	0	0	7	NBC	Air/Trek
	3	Umauma	147	169	Safia HC	188	35	99	28.08.22	1	0	0	2	NBC	Air/Trek
	4	Urumbai (Uriobo)	199	193	Safia HC	121	30	66	28.08.22	1	0	0	7	NBC	Air/Trek
	5	Fiodubo	101	170	Safia HC	106	22	57	29.08.22	1	0	0	0	NBC	Air/Trek
	6	Oure	59	86	Safia HC	114	25	63	29.08.22	1	0	0	0	NBC	Air/Trek
	7	Dibau	151	149	Safia HC	140	28	73	30.08.22	1	0	0	2	NBC	Air/Trek
	8	Asanga		206	Safia HC	194	39	102	29.08.22	1	0	0	12	NBC	Air/Trek
21		Jari Village	733	482		550	108	307		7	0	0	4		
	1	Kasirawa No.2	79	82	Safia HC	76	14	45	03.09.22	1	0	0	1	NBC	Air/Trek
	2	Aimare	175	110	Safia HC	91	18	51	03.09.22	1	0	0	0	NBC	Air/Trek
	3	Auwake (Douwa 2)	133	45	Safia HC	54	11	33	03.09.22	1	0	0	1	NBC	Air/Trek
	4	Vovosi	182	57	Safia HC	41	9	20	02.09.22	1	0	0	1	NBC	Air/Trek
	5	Doma	81	108	Safia HC	144	31	82	31.08.22	1	0	0	0	NBC	Air/Trek
	6	Boinono	83	81	Safia HC	84	15	43	02.09.22	1	0	0	0	NBC	Air/Trek
		Jari		0	Safia HC	60	10	33	03.09.22	1	0	0	1	NBC	Air/Trek
22		Tutuwarawu Village	405	297		349	49	174		2	0	0	17		
	1	Bibira No.2	225	156	Safia HC	180	25	90	02.09.22	1	0	0	2	NBC	Air/Trek
	2	Fonotaima (Yauri)	179	141	Safia HC	169	24	84	02.09.22	1	0	0	15	NBC	Air/Trek
23		Safia Village	875	837		733	147	381		5	0	0	48		
	1	Bibira No.1	195	247	Safia HC	179	31	94	29.08.22	1	0	0	1	NBC	Air/Trek
	2	Domara	171	174	Safia HC	148	29	77	01.09.22	1	0	0	20	NBC	Air/Trek
	3	Safia	322	297	Safia HC	243	48	125	01.09.22	1	0	0	12	NBC	Air/Trek
	4	Bare	133	119	Safia HC	102	28	52	01.09.22	1	0	0	14	NBC	Air/Trek
	5	Waira	55	0	Safia HC	61	11	33	04.09.22	1	0	0	1	NBC	Air/Trek
24		Obea Village	821	645		557	92	289		4	0	0	3		
	1	Obea	444	263	Safia HC	207	37	107	04.09.22	1	0	0	1	NBC	Air/Trek
	2	Silididi	144	160	Safia HC	143	25	76	04.09.22	1	0	0	0	NBC	Air/Trek
	3	Ubo	153	122	Safia HC	129	18	68	04.09.22	1	0	0	2	NBC	Air/Trek
	4	Abuabi	79	101	Safia HC	78	12	38	04.09.22	1	0	0	0	NBC	Air/Trek
				0											
Popondetta Urban			43,475	50,810		51,625	8,848	25,901		88	63	54	2,771	62	
	1	Gewoto	5,747	5,639		6,289	936	3,131		13	8	8	327		
		Higa st Sect 22	630	281	PHA	345	50	172	06.09.22	1	1	1		NBC	Road
		Boruga Plaza Sect 1/12	48	152	PHA					1					Included Under Higa St
		Popondo Avenue sect 2/4	652	386	PHA	755	84	345	06.09.22	1	1	1	45	NBC	Road
		Koropa Crescent sect 2/7	495	504	PHA	372	57	179	06.09.22	1	1	1	49	NBC	Road
		Bangoho Creek	611	762	PHA	1,145	198	605	06.09.22	1	1	1	66	NBC	Road
		Bangoho Camp	179	764	PHA					1					Included Under Bangogo Creek
		Sesenaga/Osari St Sect(3/5)	954	0	PHA	1,231	150	584	06.09.22	1	1	1	10	NBC	Road
		Gasara st Sect 8/52	418	0	PHA					1					Included Under Sesenaga
		New Guinea Compound	797	1,987	PHA	1,745	293	901	06.09.22	1	1	1	112	NBC	Road
		Waria Compund	372	325	PHA	477	70	229	06.09.22	1	1	1	45	NBC	Road
		Street: Christopher Station	197	0	PHA					1					Included Under Manus/Tufi/Raicoast
		Garaina Compund	127	102	PHA					1					Included Under Waria Compund
		Manus/Tufi/Raikos Compund	267	377	PHA	219	34	116	05.09.22	1	1	1		NBC	Road
	2	Sewa	770	2,449		2,255	300	1,091		2	2	2	101		
		Popndtta Gen Hospital Area	162	1,478	PHA	1,598	191	759	05.09.22	1	1	1	56	NBC	Road
		Hongori Avenue Sect 18-20/46	608	971	PHA	657	109	332	05.09.22	1	1	1	45	NBC	Road
3		Isuga	6,904	7,056		5,552	778	2,680		9	7	3	257		
		Isivi St	913	717	PHA	835	95	404	05.09.22	1	1	1		NBC	Road
		Hira St (51)	293	242	PHA					1					Included Under Isivi ST
		Penderata St Sect(53/54/55/15)	880	399	PHA	589	64	256	05.09.22	1	1	1	31	NBC	Road
		Barevo Ave Sect(59/60)	1,149	1,241	PHA	2,012	304	1,006	05.09.22	1	1	0	31	NBC	Road
		Police Barracks	365	509	PHA	282	45	143	05.09.22	1	1	0	59	NBC	Road
		Kaperi St. Popndtta Sch Area	628	1,549	PHA	454	62	209	05.09.22	1	1	1	11	NBC	Road
		Goruta st Sect 51	996	360	PHA	436	74	221	05.09.22	1	1	0	74	NBC	Road
		Pandanus st sect 56-59	1,120	1,872	PHA	944	134	441	05.09.22	1	1	0	51	NBC	Road
		Niusagere Village	560	167	PHA					1					Included Under Pandanus St
4		Dobuduro	1,825	2,078		1,757	252	852		3	2	1	89		
		Warisota StSect(23/29)	573	1,258	PHA	1,691	244	819	05.09.22	1	1	0	83		Road
		Jirih St sect 24-28	867	155	PHA					1					Included Under Warisota
		DPI Station & Setlemnt	385	664	PHA	66	8	33	05.09.22	1	1	1	6	NBC	Road
5		Sorovi	4,313	2,935		2,836	500	1,486		6	4	3	89		
		SBS Uni Compound	1,031	917	PHA	1,049	179	532	05.09.22	1	1	0	15	NBC	Road
		Kakendetta	403	0	PHA										Same as in Ward 8
		Cu 605	11	0	PHA					1					Included Under Kainantu Compund
		Kainantu Compund	996	904	PHA	728	150	421	05.09.22	1	1	1	45	NBC	Road
		Uni of Vudal (Oro Campus)	948	757	PHA	716	121	366	05.09.22	1	1	1	29	NBC	Road
		Elcom Compund	155	0	PHA					1					Included Under CIS/Biru
		Biru: CIS area	770	357	PHA	343	50	167	05.09.22	1	1	1		NBC	Road
6		East Embogo	3,079	3,007		2,687	568	1,432		7	7	7	152		
		Gewoto	468	434	PHA	436	115	239	26.08.22	1	1	1	46	NBC	Road
		Kapurhambo	346	252	PHA	257	62	139	26.08.22	1	1	1	6	NBC	Road
		Soputa	600	808	PHA	794	158	403	26.08.22	1	1	1	70	NBC	Road
		Kikonda	685	374	PHA	194	34	94	26.08.22	1	1	1	4	NBC	Road
		Anzerita	295	221	PHA	174	50	135	26.08.22	1	1	1		NBC	Road
		Huhura	114	294	PHA	259	49	137	26.08.22	1	1	1	3	NBC	Road

LLG	Ward	Village	2022 Population Based On 2000 Census	2022 Population Based On 2019 Survey	Health Centre	Population Surveyed	House Holds Surveyed	Nets Issued	Date Of Distribution	Villages	Digicel	Bmobile	Houses With Radios	Radio Networks	Comments
		Sopura LTC Blocks	571	625	PHA	573	100	285	26.08.22	1	1	1	23	NBC	Road
7	Popondetta Urban		4,252	5,265		5,383	981	2,687		13	11	9	225		
		Ajoro	365	745	PHA	461	75	217	24.08.22	1	1	1		NBC	Road
		Hohota Blocks	1,075	550	PHA	1,003	200	503	24.08.22	1	1	1	24	NBC	Road
		Inonda	44	207	PHA	189	40	90	24.08.22	1	1	1		NBC	Road
		Hiriju	258	185	PHA	308	43	153	24.08.22	1	1	1	2	NBC	Road
		Mosou	309	348	PHA	303	50	134	24.08.22	1	1	1		NBC	Road
		Sewa	289	310	PHA	530	73	260	24.08.22	1	1	0	12	NBC	Road
		Jomota (Dirita)	335	585	PHA	945	197	491	24.08.22	1	1	1	117	NBC	Road
		Pendereta	188	282	PHA					1					Included Under Jomota
		Oseta	166	0	PHA					1					Included Under Inota
		Inota	328	294	PHA	512	100	259	24.08.22	1	1	0	15	NBC	Road
		Awowota	214	858	PHA	432	82	219	24.08.22	1	1	1	1	NBC	Road
		Girua Blocks	608	666	PHA	666	114	343	24.08.22	1	1	1	49	NBC	Road
		Ijika Community School	72	234	PHA	34	7	18	24.08.22	1	1	1	5	NBC	Road
8			5,963	7,181		7,689	1,596	3,960		21	12	11	345		
		Kakendetta	597	1,934	PHA	2,333	577	1,246	25.08.22	1	1	1	80	NBC	Road
		Jegarata	158	183	PHA					1					Included Under Kakendetta
		Jonita	473	639	PHA	866	131	390	25.08.22	1	1	1	0	NBC	Road
		Haruro	302	577	PHA	838	191	429	25.08.22	1	1	1	62	NBC	Road
		Epa 1	88	674	PHA	465	92	237	25.08.22	1	1	0	20	NBC	Road
		Ohiki	249	533	PHA	375	92	205	25.08.22	1	1	1		NBC	Road
		Ususu	55	0	PHA					1					Included Under Ohiki
		Epa	838	0	PHA					1					Included Under Epa 1
		Epa (Incl Oil Palm Village)	48	0	PHA					1					Included Under Epa 1
		Dahana Blocks	333	312	PHA	285	50	147	25.08.22	1	1	1	17	NBC	Road
		Bahupi Blocks	282	243	PHA	508	87	262	25.08.22	1	1	1		NBC	Road
		Tombata	182	0	PHA					1					Included Under Bahupi Blocks
		Girua Blocks	85	0	PHA					1					Included in Ward 7
		Pohemo Vop Blocks	269	369	PHA					1					Included Under Bahupi Blocks
		Newton College	247	119	PHA	169	35	88	26.08.22	1	1	1		NBC	Road
		Isuga	195	0	PHA					1					Included Under Isuga
		Puhemo	280	392	PHA	633	100	314	26.08.22	1	1	1	24	NBC	Road
		Jegarata Anglican Mission	223	0	PHA					1					Included Under Puhemo
		Hegata	659	756	PHA	652	120	337	26.08.22	1	1	1	80	NBC	Road
		Auga	131	136	PHA	194	47	108	26.08.22	1	1	1		NBC	Road
		Sima	269	315	PHA	371	74	197	26.08.22	1	1	1	62	NBC	Road
9			2,679	6,129		9,438	1,409	4,694		7	6	6	703		
		Dobuduru	578	2,175	PHA	4,875	695	2,442	02.09.22	1	1	1	513	NBC	Road
		Huvivi	462	741	PHA	1,575	200	732	02.09.22	1	1	1	122	NBC	Road
		Monge 1/2/3/485	527	673	PHA					1					Included Under Sangara HC
		Kongona	326	853	PHA	1,094	200	586	03.09.22	1	1	1	55	NBC	Road
		Monsota	182	336	PHA	232	37	121	03.09.22	1	1	1		NBC	Road
		Sigana	171	471	PHA	713	127	353	03.09.22	1	1	1	1	NBC	Road
		Hingororutu	433	880	PHA	949	150	460	03.09.22	1	1	1	12	NBC	Road
10			4,585	5,412		4,894	1,036	2,481		4	2	2	285		
		Sorovi Settlement	3,939	4,693	PHA	4,300	936	2,190	01.09.22	1	1	1	243	NBC	Road
		Sorovi Staiton	344	430	PHA	594	100	291	01.09.22	1	1	1	42	NBC	Road
		Haugata	66	288	PHA					1					Included Under Sorovi Sett
		Angorota	236	0	PHA					1					Included Under Sorovi Sett
11			3,357	3,660		2,845	492	1,407		3	2	2	198		
		East Embogo	1,403	1,856	PHA	1,835	292	909	03.09.22	1	1	1	138	NBC	Road
		Double Cross Settlements	657	1,077	PHA	1,010	200	498	03.09.22	1	1	1	60	NBC	Road
		Irigi Oil Palm Village	1,298	727	PHA					1					Covered Under Sangara HC

ANNEX TWO

**Rotarians Against Malaria
Oro Province: Sohe Distict
LLIN Distribution Summary Sheet 2022**

LLG	Ward	Village	2022 Population Based On 2000 Census	2022 Population Based On 2019 Survey	Health Centre	Population Surveyed	House Holds Surveyed	Nets Issued	Date Of Distribution	Villages	Digicel	Emobile	Houses With Radios	Radio Networks	Comments
SOHE DISTRICT			131,985	131,985		127,092	23,652	64,078		434	321	88	4,711	336	
Kokoda Rural			31,896	29,950		28,837	5,729	14,678		119	100	0	562	101	
1	Asimba		1,014	907		907	213	387		5	5	0	9		
	1	Asimba	185	126	Kokoda HC	137	47	58	25.08.22	1	1	0		NBC	2 Days Trek
	2	Kanga	326	582	Kokoda HC	512	79	205	25.08.22	1	1	0	9	NBC	5 hours Trek
	3	Karukaru	120	130	Kokoda HC	138	50	67	25.08.22	1	1	0		NBC	1 Days Trek
	4	Korogo	109	0	Kokoda HC	30	8	15	25.08.22	1	1	0		NBC	1 Days Trek
	5	Sungeina	274	69	Kokoda HC	90	29	42	25.08.22	1	1	0		NBC	1 Days Trek
2	Kovelo		1,284	1,814		2,054	348	995		12	12	0	10		
	1	Kovelo	284	330	Kokoda HC	351	56	163	24.08.22	1	1	0		NBC	Road
	2	Koiasi	95	91	Kokoda HC	113	22	54	24.08.22	1	1	0		NBC	Road
	3	Ebea	215	335	Kokoda HC	354	49	171	23.08.22	1	1	0	9	NBC	Road
	4	Savaia	229	126	Kokoda HC	125	27	64	20.08.22	1	1	0		NBC	Road
	5	Kovelo 2	93	71	Kokoda HC	82	15	42	22.08.22	1	1	0		NBC	Road
	6	Savaia Sttlmnt	32	104	Kokoda HC	260	48	127	20.08.22	1	1	0		NBC	Road
	7	Yoda	69	0	Kokoda HC	139	19	67	25.08.22	1	1	0	1	NBC	Road
	8	Koma	39	451	Kokoda HC	443	77	218	23.08.22	1	1	0		NBC	Road
	9	Muduii	105	73	Kokoda HC	60	11	29	25.08.22	1	1	0		NBC	Road
	10	Soa	28	74	Kokoda HC	31	7	14	22.08.22	1	1	0		NBC	Road
	11	Foka	93	116	Kokoda HC					1	1	0		NBC	Included Under Savaia Settlement
		Horona		41	Kokoda HC	96	17	46	23.08.22	1	1	0		NBC	road
3	Saga		1,713	1,899		2,126	429	1,075		7	7	0	0		
	1	Amada	268	358	Kokoda HC	395	72	188	22.08.22	1	1	0		NBC	Road
	2	Fala	203	201	Kokoda HC	148	34	83	22.08.22	1	1	0		NBC	Road
	3	Botue	570	680	Kokoda HC	623	134	322	24.08.22	1	1	0		NBC	Road
	4	Saga	158	184	Kokoda HC	221	49	114	25.08.22	1	1	0		NBC	Road
	5	Kokoda Vllge	328	0	Kokoda HC	262	53	138	20.08.22	1	1	0		NBC	Road
	6	Botue Sttlment	187	190	Kokoda HC	178	34	89	22.08.22	1	1	0		NBC	Road
	7	Manua/Kendasogu		287	Kokoda HC	299	53	141	27.08.22	1	1	0		NBC	Road
4	Ioro Lss Blocks		1,024	1,206		1,073	253	563		3	3	0	0		
	1	Kokoda Pltn Portion	237	304	Kokoda HC	198	46	98	27.08.22	1	1	0		NBC	Road
	2	Kokoda Bick	357	390	Kokoda HC	378	107	208	20.08.22	1	1	0		NBC	Road
	3	Iora Blcks	430	512	Kokoda HC	497	100	257	20.08.22	1	1	0		NBC	Road
5	Kebara		2,760	2,484		2,443	441	1,198		7	7	0	0		
	1	Kamondo	274	468	Kokoda HC	467	108	225	24.08.22	1	1	0		NBC	Road
	2	Kanandara	335	238	Kokoda HC	210	35	105	24.08.22	1	1	0		NBC	Road
	3	Kapara	351	282	Kokoda HC	258	44	146	24.08.22	1	1	0		NBC	Road
	4	Perive	661	476	Kokoda HC	494	81	253	24.09.22	1	1	0		NBC	Road
	5	Sengi	746	618	Kokoda HC	535	100	248	24.08.22	1	1	0		NBC	Road
	6	Manekari	298	269	Kokoda HC	329	46	152	24.08.22	1	1	0		NBC	Road
	7	Kaumo	95	133	Kokoda HC	150	27	69	24.08.22	1	1	0		NBC	Road
6	Abuari		474	419		452	84	226		4	4	0	0		
	1	Abuari	107	88	Kokoda HC	138	24	66	16.08.22	1	1	0		NBC	5 hr Trek
	2	Hagutava	71	89	Kokoda HC	54	14	31	15.08.22	1	1	0		NBC	5 hr Trek
	3	Kyile	65	62	Kokoda HC	74	14	36	16.08.22	1	1	0		NBC	5 hr Trek
	4	Pelai	231	181	Kokoda HC	186	32	93	15.08.22	1	1	0		NBC	5 hr Trek
7	Alola		203	264		240	48	126		2	2	0	0		
	1	Alola	112	93	Kokoda HC	96	18	51	15-16.08.22	1	1	0		NBC	1 Day Trek
	2	Isurava	91	171	Kokoda HC	144	30	75	15-16.08.22	1	1	0		NBC	1 Day Trek
8	Waju		2,001	2,206		2,224	403	1,093		6	6	0	59		
	1	Havaki	191	257	Kokoda HC	313	50	154	25.08.22	1	1	0	16	NBC	Road
	2	Sirireta	511	501	Kokoda HC	497	94	236	25.08.22	1	1	0	15	NBC	Road
	3	Waju	531	622	Kokoda HC	615	116	300	25.08.22	1	1	0	9	NBC	Road
	4	Hovea	347	254	Kokoda HC	238	46	120	25.08.22	1	1	0	0	NBC	Road
	5	Gorari	55	249	Kokoda HC	263	47	133	25.08.22	1	1	0	3	NBC	Road
	6	Wasara	367	323	Kokoda HC	298	50	150	26.08.22	1	1	0	16	NBC	Road
9	Hanjiri		811	916		862	191	463		4	4	0	29		
	1	Hanjiri	497	500	Kokoda HC	450	99	227	21.08.22	1	1	0	15	NBC	Road
	2	Maju	105	161	Kokoda HC	161	48	102	20.08.22	1	1	0	1	NBC	Road
	3	Ingi	140	183	Kokoda HC	152	27	82	20.08.22	1	1	0	11	NBC	Road
	4	Ifafu	69	72	Kokoda HC	99	17	52	21.08.22	1	1	0	2	NBC	Road
10	Ambene		900	853		792	118	390		1	1	0	22		
	1	Ambene	900	853	Kokoda HC	792	118	390	23.08.22	1	1	0	22	NBC	Road
11	Ilimo		1,997	1,968		1,684	295	842		3	3	0	33		
	1	Hojavahambo	535	467	Kokoda HC	378	65	190	20.08.22	1	1	0	10	NBC	Road
	2	Ilimo	612	681	Kokoda HC	576	97	284	20.08.22	1	1	0	23	NBC	Road
	3	Papaki	850	820	Kokoda HC	730	133	368	20.08.22	1	1	0		NBC	Road
12	Hamara		1,160	978		949	212	500		4	4	0	16		
	1	Haki 1	322	208	Kokoda HC	228	50	117	22.08.22	1	1	0	13	NBC	Road
	2	Haki 2	229	233	Kokoda HC	179	50	96	22.08.22	1	1	0	0	NBC	Road
	3	Hamara	335	332	Kokoda HC	322	69	166	22.08.22	1	1	0	3	NBC	Road
	4	Hojaki	274	205	Kokoda HC	220	43	121	22.08.22	1	1	0	0	NBC	Road
13	Ajeka		1,788	1,762		1,666	322	768		4	4	0	44		
	1	Ajeka	547	467	Kokoda HC	424	91	180	26.08.22	1	1	0	0	NBC	Road
	2	Ombisusu	856	718	Kokoda HC	703	116	337	26.08.22	1	1	0	33	NBC	Road
	3	Tara	385	351	Kokoda HC	358	85	171	26.08.22	1	1	0	4	NBC	Road
		Warina		225	Kokoda HC	181	30	80	26.08.22	1	1	0	7	NBC	Road
14	Evasusu		1,105	1,030		979	195	431		3	3	0	19		

LLG	Ward	Village	2022 Population Based On 2000 Census	2022 Population Based On 2019 Survey	Health Centre	Population Surveyed	House Holds Surveyed	Nets Issued	Date Of Distribution	Villages	Digicel	Emobile	Houses With Radios	Radio Networks	Comments
	1	Boru	434	414	Kokoda HC	374	72	121	26.08.22	1	1	0	2	NBC	Road
	2	Evasusu	499	380	Kokoda HC	400	85	213	17.08.22	1	1	0	6	NBC	Road
	3	Sorape	172	236	Kokoda HC	205	38	97	27.08.22	1	1	0	11	NBC	Road
15	Asisil		1,217	902		993	231	480		9	8	0	25		
	1	Asisi	373	223	Kokoda HC	221	50	104	25.08.22	1	1	0	6	NBC	Road
	2	Sirorata	395	253	Kokoda HC	275	62	118	25.08.22	1	1	0	0	NBC	Road
	3	Siawa	116	101	Kokoda HC	123	30	66	25.08.22	1	1	0	6	NBC	Road
	4	Kuru	43	16	Kokoda HC										Relocated to Sirorata
	5	Ifoin	39	22	Kokoda HC	22	5	12	25.08.22	1	1	0	1	NBC	Road
	6	Sangata	26	288	Kokoda HC	52	15	27	25.08.22	1	1	0	0	NBC	Road
	7	Warangota	16	0	Kokoda HC										Relocated to Asisi
	8	Siewatumo	22	0	Kokoda HC					1				NBC	Included Under Foeko
	9	Siwari	28	0	Kokoda HC	57	16	30	25.08.22	1	1	0	2	NBC	Road
	10	Homape	73	0	Kokoda HC	141	28	72	25.08.22	1	1	0	4	NBC	Road
	11	Foeko	85	0	Kokoda HC	102	25	51	25.08.22	1	1	0	6	NBC	Road
16	Sairope		1,588	1,231		1,244	312	686		4	4	0	105		
	1	Warina	201	0	Kokoda HC										Same as in Ward 13 Ajeka.
	2	Ambarakowari	124	177	Kokoda HC	168	68	103	16.08.22	1	1	0	22	NBC	Road
	3	Fambe	241	235	Kokoda HC	263	78	138	16.08.22	1	1	0	21	NBC	Road
	4	Sairope	775	574	Kokoda HC	658	123	357	16.08.22	1	1	0	19	NBC	Road
	5	Somara	247	244	Kokoda HC	155	43	88	17.08.22	1	1	0	43	NBC	Road
17	Putembo		1,138	1,098		1,163	451	727		9	9	0	133		
	1	Maujeta	237	144	Kokoda HC	166	35	81	15.08.22	1	1	0	10	NBC	Road
	2	Putembo	99	177	Kokoda HC	123	98	100	19.08.22	1	1	0	7	NBC	Road
	3	Osara	43	122	Kokoda HC	91	43	67	15.08.22	1	1	0	13	NBC	Road
	4	Butipe	213	235	Kokoda HC	221	56	136	16.08.22	1	1	0	17	NBC	Road
	5	Maire Corner	91	90	Kokoda HC	164	50	91	17.08.22	1	1	0	21	NBC	Road
	6	Majara	116	116	Kokoda HC	167	40	81	19.08.22	1	1	0	23	NBC	Road
	7	Perobibassusu	53	70	Kokoda HC	66	38	50	18.08.22	1	1	0	16	NBC	Road
	8	Pugahembo	170	103	Kokoda HC	132	76	99	19.08.22	1	1	0	23	NBC	Road
	9	Sasere	116	40	Kokoda HC	33	15	22	19.08.22	1	1	0	3	NBC	Road
18	Asafa		1,229	1,150		1,090	223	553		4	4	0	7		
	1	Asafa	525	518	Kokoda HC	620	128	296	20.08.22	1	1	0	0	NBC	Road/1 Day Trek
	2	Jaiapa	211	82	Kokoda HC	79	16	46	22.08.22	1	1	0	7	NBC	Road/1 Day Trek
	3	Enjoro	166	202	Kokoda HC	140	27	85	20.08.22	1	1	0	0	NBC	Road/1 Day Trek
	4	Godibeth	326	348	Kokoda HC	251	52	126	20.08.22	1	1	0	0	NBC	Road/1 Day Trek
19	Wora		1,131	775		675	117	428		4	0	0	0		
	1	Onuaba	170	129	Emo HC	101	27	65	29.08.22	1	0	0	0		Air/Trek
	2	Waribia	124	106	Emo HC	128	22	77	29.08.22	1	0	0	0		Air/Trek
	3	Managube	328	241	Emo HC	168	28	100	29.08.22	1	0	0	0		Air/Trek
	4	Namanaia (Wora)	357	299	Emo HC	278	40	186	29.08.22	1	0	0	0		Air/Trek
	5	Wora	152	0	Emo HC										Non Existant
20	Emo		1,198	1,646		854	125	500		7	0	0	0		
	1	Emo 1	253	74	Emo HC	93	21	57	29.08.22	1	0	0	0		Air/Trek
	2	Emo 2	128	75	Emo HC	63	11	46	29.08.22	1	0	0	0		Air/Trek
	3	Urambosi	138	217	Emo HC	200	19	125	29.08.22	1	0	0	0		Air/Trek
	4	Ijaro 1	211	1,092	Emo HC	147	21	75	29.08.22	1	0	0	0		Air/Trek
	5	Ijaro 2	211	0	Emo HC	169	28	86	28.08.22	1	0	0	0		Air/Trek
	6	Rumara	156	133	Emo HC	126	17	75	29.08.22	1	0	0	0		Air/Trek
	7	Emo Station	101	54	Emo HC	56	8	36	29.08.22	1	0	0	0		Air/Trek
21	Awomo		1,231	512		499	86	312		4	0	0	0		
		Wasaro		122	Emo HC					1					Included Under Awoma
	1	Awoma	641	142	Emo HC	226	42	135	28.08.22	1	0	0	0		Air/Trek
	2	Tetebedi	304	103	Emo HC	150	26	103	28.08.22	1	0	0	0		Air/Trek
	3	Muni	286	145	Emo HC	123	18	74	28.08.22	1	0	0	0		Air/Trek
22	Kovio		586	302		360	40	160		3	0	0	0		
		Duau		109	Emo HC	92	15	50	28.08.22	1	0	0	0		Air/Trek
	1	Kovio 1	270	121	Emo HC	194	15	62	28.08.22	1	0	0	0		Air/Trek
	2	Kovio 2	316	72	Emo HC	74	10	48	28.08.22	1	0	0	0		Air/Trek
23	Kokoda Urban		1,107	1,251		1,006	188	513		5	5	0	42		
	1	Kokoda Station	195	248	Kokoda HC	86	15	43	15.08.22	1	1	0	1	NBC	Road
	2	Kokoda Station	519	672	Kokoda HC	403	71	206	16.08.22	1	1	0	7	NBC	Road
	3	Kokoda Station	154	0	Kokoda HC	241	43	119	16.08.22	1	1	0	2	NBC	Road
	4	CRC/SDA Area	134	201	Kokoda HC	116	27	60	16.08.22	1	1	0	0	NBC	Road
	5	Goilala compound	105	130	Kokoda HC	160	32	85	16.08.22	1	1	0	32	NBC	Road
24	Mamba Urban		3,236	2,378		2,502	404	1,262		5	5	0	9		
	1	Konea	1,067	869	Kokoda HC	910	144	457	18.08.22	1	1	0	0	NBC	Road
	2	Komo	1,314	814	Kokoda HC	752	108	372	18.08.22	1	1	0	7	NBC	Road
	3	Old Mamba (Asisi)	51	110	Kokoda HC	219	41	116	18.08.22	1	1	0	0	NBC	Road
	4	Mamba Village	708	585	Kokoda HC	451	78	231	18.08.22	1	1	0	1	NBC	Road
	5	Ove Place	97	0	Kokoda HC	170	33	86	18.08.22	1	1	0	1	NBC	Road
				0											
Higaturu Rural			71,376	76,776		74,356	13,835	37,342		210	167	88	3,658	167	
	1	New Warisota	550	1,061		1,092	212	559		4	4	4	97		
	1	New Warisota Village	138	225	Sangara HC	297	50	148	26.08.22	1	1	1	47	FM	Road
		Manuta		67	Sangara HC	252	50	128	26.08.22	1	1	1	16	FM	Road
		Garepa & Ese		212	Sangara HC	145	30	74	26.08.22	1	1	1	2	FM	Road
	2	New Warisota VOP Block	412	558	Sangara HC	398	82	209	26.08.22	1	1	1	32	FM	Road
2	Hohorita		2,360	3,269		2,936	597	1,548		7	7	7	378		
		Dipotutu		330	Sangara HC	223	45	117	28.08.22	1	1	1	11	FM	Road
	1	Hohorita Village	835	1,183	Sangara HC	790	137	409	20.08.22	1	1	1	121	FM	Road
	2	Irihambo	474	368	Sangara HC	368	80	191	20.08.22	1	1	1	78	FM	Road
	3	Kakita	328	330	Sangara HC	707	121	372	20.08.22	1	1	1	55	FM	Road
	4	Sombou	176	286	Sangara HC	203	37	99	20.08.22	1	1	1	21	FM	Road
	5	Hohorita VOP blocks	493	733	Sangara HC	593	170	335	20.08.22	1	1	1	91	FM	Road

LLG	Ward	Village	2022 Population Based On 2000 Census	2022 Population Based On 2019 Survey	Health Centre	Population Surveyed	House Holds Surveyed	Nets Issued	Date Of Distribution	Villages	Digicel	Emobile	Houses With Radios	Radio Networks	Comments
	6	Hohorita Com School	53	38	Sangara HC	52	7	25	20.08.22	1	1	1	1	FM	Road
3		Igora Oil Palm Blocks	3,658	2,974		3,092	556	1,627		3	3	3	304		
	1	Igora Oil palm Block	2,802	2,051	Sangara HC	2,633	477	1,391	21.08.22	1	1	1	253	FM	Road
	2	Igora Primary School	393	359	Sangara HC	296	53	153	21.08.22	1	1	1	26	FM	Road
	3	OPIC	462	563	Sangara HC	163	26	83	21.08.22	1	1	1	25	FM	Road
4		Koipa	1,606	1,864		1,368	280	678		8	4	4	71		
	1	Koipa	629	694	Saiho HC	739	170	370	26.08.22	1	1	1	41	IBC Norther	Road
	2	Pusahambo	300	292	Saiho HC					1					Same as Hohorita VOP Blocks
	3	Samba	170	328	Saiho HC	226	40	112	26.08.22	1	1	1	16	IBC Norther	Road
	4	Kevana	152	271	Saiho HC					1					Same village as Hohorita Village
		Higaturu Vocational Centre	85	0	Saiho HC	97	20	46	26.08.22	1	1	1	9	IBC Norther	Road
	6	Martyrs Secondary Sch	270	279	Saiho HC	306	50	150	26.08.22	1	1	1	5	IBC Norther	Road
		Endege			Saiho HC					1					Included Under Koipa
		Hamoni			Saiho HC					1					Included Under Koipa
5		Kiorota	3,524	3,243		2,645	451	1,278		12	6	0	153		
	1	Siriri	160	288	Saiho HC	238	50	121	09.09.22	1	1	0	23	IBC Norther	Road
	2	Hamumuta	91	0	Saiho HC	195	37	98	09.09.22	1	1	0	13	IBC Norther	Road
	3	Eveka	174	0	Saiho HC					1					Included Under Kiorota
	4	Garata	150	0	Saiho HC	216	39	105	09.09.22	1	1	0	15	IBC Norther	Road
	5	Ijivene	225	0	Saiho HC	98	13	46	09.09.22	1	1	0	7	IBC Norther	Road
	6	Kongota	83	0	Saiho HC					1					Included Under Kiorota
	7	Tambore (Egaturu)	105	278	Saiho HC	177	28	89	10.09.22	1	1	0	13	IBC Norther	Road
	8	Aura Hambo	189	0	Saiho HC					1					Included Under Kiorota
	9	Gijiri	49	0	Saiho HC					1					Included Under Kiorota
	10	Kiorota	2,153	2,540	Saiho HC	1,721	284	819	09.09.22	1	1	0	82	IBC Norther	Road
	11	Kamusa	83	136	Saiho HC					1					Included Under Kiorota
	12	Kiorota Com School	61	0	Saiho HC					1					Included Under Kiorota
6		Barevoturu	2,729	2,720		2,378	449	1,182		7	3	0	116		
	1	Barevaturu	1,002	863	Saiho HC	919	185	461	28.08.22	1	1	0	35	IBC Norther	Road
	2	Eusi No.1	93	205	Saiho HC					1					Included Under Bare
	3	Eusi No.2	73	86	Saiho HC					1					Included Under Bare
	4	Hogoruturu	221	221	Saiho HC	262	50	132	28.08.22	1	1	0	12	IBC Norther	Road
	5	Kisesehambo	95	0	Saiho HC					1					Included Under Timbeki
	6	Timbeki	1,211	1,345	Saiho HC	1,197	214	589	28.08.22	1	1	0	69	IBC Norther	Road
	7	Barevaturu Com school	34	0	Saiho HC					1					Included Under Bare
7		Kendata	1,452	1,584		1,551	305	802		4	4	1	78		
	1	Kendata	618	548	Saiho HC	619	134	330	21.08.22	1	1	1	24	IBC Norther	Road
	2	Ururu	406	446	Saiho HC	271	50	146	21.08.22	1	1	0	23	IBC Norther	Road
	3	Sigoreturu	178	200	Saiho HC	247	44	127	21.08.22	1	1	0	18	IBC Norther	Road
	4	Savarituru	249	391	Saiho HC	414	77	199	21.08.22	1	1	0	13	IBC Norther	Road
8		Duve	2,427	2,171		1,954	369	989		10	10	0	99		
	1	Peretambari	97	113	Saiho HC	87	20	49	31.08.22	1	1	0	9	IBC Norther	Road
	2	Duve	645	497	Saiho HC	223	49	118	01.09.22	1	1	0	12	IBC Norther	Road
	3	Nomota	191	101	Saiho HC	252	50	124	31.08.22	1	1	0	34	IBC Norther	Road
	4	Janguta	77	164	Saiho HC	112	20	57	02.09.22	1	1	0	1	IBC Norther	Road
	5	Singite	150	68	Saiho HC	163	32	82	02.09.22	1	1	0	1	IBC Norther	Road
	6	Hirususu	164	0	Saiho HC	169	29	80	03.09.22	1	1	0	0	IBC Norther	Road
	7	Singi	491	384	Saiho HC	153	32	75	06.09.22	1	1	0	0	IBC Norther	Road
	8	Urarituru	286	317	Saiho HC	274	43	136	31.08.22	1	1	0	10	IBC Norther	Road
	9	Hevapa	229	251	Saiho HC	250	44	125	31.08.22	1	1	0	27	IBC Norther	Road
	10	Savarituru	97	0	Saiho HC										Same as In Ward 7
		Puri		277	Saiho HC	271	50	143	03.09.22	1	1	0	5	IBC Norther	Road
9		Kongohambo	1,825	1,952		1,543	252	821		5	5	0	64		
	1	Sasembata	570	738	Saiho HC	449	73	258	21.08.22	1	1	0	16	IBC Norther	Road
	2	Torogota	310	392	Saiho HC	332	55	171	31.08.22	1	1	0	8	IBC Norther	Road
	3	Kongohambo	253	310	Saiho HC	240	40	117	21.08.22	1	1	0	7	IBC Norther	Road
	4	Sasembata Com School	144	0	Saiho HC	152	26	84	21.08.22	1	1	0	15	IBC Norther	Road
	5	Hamburata	547	511	Saiho HC	370	58	191	22.08.22	1	1	0	18	IBC Norther	Road
10		Binduta	2,198	2,597		2,041	394	1,051		5	5	0	20		
	1	Garombi	412	396	Saiho HC	497	98	257	22.08.22	1	1	0	8	IBC Norther	Road
	2	Sambahuta	182	221	Saiho HC	246	50	124	21.08.22	1	1	0	4	IBC Norther	Road
	3	Isoge	835	907	Saiho HC	571	113	293	21.08.22	1	1	0	2	IBC Norther	Road
	4	Sivepi	426	473	Saiho HC	358	71	193	21.08.22	1	1	0	6	IBC Norther	Road
	5	Binduta	343	600	Saiho HC	369	62	184	21.08.22	1	1	0	0	IBC Norther	Road
11		Handarituru	4,343	4,877		4,580	830	2,249		12	8	1	190		
	1	Agenahambo	756	263	Saiho HC	990	175	484	31.08.22	1	1	1	19	IBC Norther	Road
	2	Ivindari	310	441	Saiho HC					1					Included Under Handarituru
	3	Peromba	251	391	Saiho HC	83	14	39	31.08.22	1	1	0	0	IBC Norther	Road
	4	Bago	235	237	Saiho HC					1					Included Under Agenahambo
	5	Handarituru	643	591	Saiho HC	968	187	483	28.08.22	1	1	0	26	IBC Norther	Road
	6	Sarimbo	255	389	Saiho HC	643	107	310	03.09.22	1	1	0	30	IBC Norther	Road
	7	Eundu	328	234	Saiho HC	226	36	112	28.08.22	1	1	0	13	IBC Norther	Road
	8	Soroputa	754	819	Saiho HC	755	141	377	03.09.22	1	1	0	35	IBC Norther	Road
	9	Uhita	722	866	Saiho HC	722	135	349	03.09.22	1	1	0	51	IBC Norther	Road
	10	Agenahambo Com Sch	87	86	Saiho HC					1					Included Under Agenahambo
		Jungata		282	Saiho HC	193	35	95	28.08.22	1	1	0	16	IBC Norther	Road
		Haruru		277	Saiho HC					1					Included Under Agenahambo
12		Awala	2,545	2,375		2,450	422	1,216		6	4	0	31		
	1	Awala	1,423	539	Saiho HC	515	100	258	01.09.22	1	1	0	6	IBC Norther	Road
	2	Awala VOP Block	446	578	Saiho HC	537	100	269	01.09.22	1	1	0	9	IBC Norther	Road
	3	Saiho Health Centre	156	404	Saiho HC	1,154	176	566	01.09.22	1	1	0	15	IBC Norther	Road
	4	Awala Com Sch	63	288	Saiho HC	244	46	123	01.09.22	1	1	0	1	IBC Norther	Road
	5	Saiho Police Station	57	264	Saiho HC					1					Included Under Saiho HC
	6	Serahambo VOP Block	399	303	Saiho HC					1					Included Under Saiho HC

LLG	Ward	Village	2022 Population Based On 2000 Census	2022 Population Based On 2019 Survey	Health Centre	Population Surveyed	House Holds Surveyed	Nets Issued	Date Of Distribution	Villages	Digicel	Emobile	Houses With Radios	Radio Networks	Comments
13	Sui		2,192	2,088		1,625	304	802		3	3	0	33		
		1 Tandeti	231	286	Saiho HC	117	17	58	29.08.22	1	1	0	4	NBC Norther	Road
		2 Sui	1,247	972	Saiho HC	688	133	337	29.08.22	1	1	0	11	NBC Norther	Road
		3 Tunana	714	829	Saiho HC	820	154	407	29.08.22	1	1	0	18	NBC Norther	Road
14	Boru		2,127	1,812		1,615	345	816		5	5	0	33		
		1 Angorota	558	469	Saiho HC	471	100	236	24.08.22	1	1	0	6	NBC Norther	Road
		2 Waseta	274	294	Saiho HC	241	50	121	24.08.22	1	1	0	11	NBC Norther	Road
		3 Boro + Boru Vop Bck	606	479	Saiho HC	408	100	212	24.08.22	1	1	0	12	NBC Norther	Road
		4 Waseta C/Sch	107	74	Saiho HC	86	14	43	24.08.22	1	1	0	0	NBC Norther	Road
		5 Waseta Vop Bck	582	496	Saiho HC	409	81	204	24.08.22	1	1	0	4	NBC Norther	Road
15	Mumuni		1,498	2,017		1,652	342	824		3	3	0	31		
		1 Mumuni	1,091	1,040	Saiho HC	895	187	445	29.08.22	1	1	0	17	NBC Norther	Road
		2 Mumunipe	408	479	Saiho HC	360	82	181	30.08.22	1	1	0	0	NBC Norther	Road
		Dapari		498	Saiho HC	397	73	198	30.08.22	1	1	0	14	NBC Norther	Road
16	Koropata		3,127	2,816		2,429	448	1,198		6	5	0	26		
		1 Honai	128	442	Saiho HC					1					Included Under Koropata 1
		2 Koropata 1	925	584	Saiho HC	537	100	269	24.08.22	1	1	0	7	NBC Norther	Road
		3 Koropata 2	1,803	682	Saiho HC	843	150	411	24.08.22	1	1	0	12	NBC Norther	Road
		4 Bata	251	390	Saiho HC	262	50	133	24.08.22	1	1	0	2	NBC Norther	Road
		5 Harange C/Sch	20	0	Saiho HC	248	48	123	24.08.22	1	1	0	1	NBC Norther	Road
		Harange		717	Saiho HC	539	100	262	24.08.22	1	1	0	4	NBC Norther	Road
17	Sirembi		2,699	2,348		2,558	484	1,353		12	4	0	26		
		1 Nahihisu	266	320	Saiho HC	430	78	212	08.09.22	1	1	0	7	NBC Norther	Road
		2 Homape	408	374	Saiho HC					1					Included Under Hujavasusu
		3 Keuri	126	184	Saiho HC					1					Included Under Hujavasusu
		4 Hujavasusu	298	0	Saiho HC	497	86	264	09.09.22	1	1	0	6	NBC Norther	Road
		5 Uhoru	264	201	Saiho HC					1					Included Under Hujavasusu
		6 Siporosusu	223	156	Saiho HC					1					Included Under Hujavasusu
		7 Sirembi 1	361	595	Saiho HC	1,298	270	707	09.09.22	1	1	0	8	NBC Norther	Road
		8 Sirembi 2	124	180	Saiho HC					1					Included Under Sirembi 1
		9 Mengothuti	105	338	Saiho HC	333	50	170	09.09.22	1	1	0	5	NBC Norther	Road
		10 Hujavasusu Vop Bck	180	0	Saiho HC					1					Included Under Hujavasusu
		11 Anjagoro CRC C/Group	286	0	Saiho HC					1					Included Under Sirembi 1
		12 Sirembi Com sch	59	0	Saiho HC					1					Included Under Sirembi 1
18	Hungiri		1,977	2,183		2,263	373	1,134		12	9	0	14		
		1 Divinokovari	122	290	Saiho HC	80	13	50	08.09.22	1	1	0	1	NBC Norther	Road
		2 Hungiri	434	476	Saiho HC	602	99	321	09.09.22	1	1	0	4	NBC Norther	Road
		3 Urarisusu	182	312	Saiho HC	274	46	132	09.09.22	1	1	0	2	NBC Norther	Road
		4 Jambu	195	283	Saiho HC	278	50	130	09.09.22	1	1	0	5	NBC Norther	Road
		5 Onota	270	285	Saiho HC					1					Included Under Hungiri
		6 Jordanpe	114	39	Saiho HC	135	20	66	10.09.22	1	1	0	1	NBC Norther	Road
		7 Ariho	134	0	Saiho HC					1					Included Under Dapa
		8 Kumusi	158	314	Saiho HC	300	44	142	09.09.22	1	1	0	1	NBC Norther	Road
		9 Dapa	189	185	Saiho HC	370	65	180	08.09.22	1	1	0	0	NBC Norther	Road
		10 Aisehe	164	0	Saiho HC	145	25	76	09.09.22	1	1	0	0	NBC Norther	Road
		11 Hungiri C/Sch	16	0	Saiho HC					1					Included Under Hungiri
		Konganata			Saiho HC	79	11	37	09.09.22	1	1	0	0	NBC Norther	Road
19	Sakita		3,774	4,050		3,682	641	1,802		11	7	0	82		
		1 Poha 1 & 2	1,065	1,174	Saiho HC	1,064	179	504	05.09.22	1	1	0	34	NBC Norther	Road
		2 Sakita 2	142	64	Saiho HC	523	96	251	08.09.22	1	1	0	20	NBC Norther	Road
		3 Isemba	178	0	Saiho HC	303	50	144	08.09.22	1	1	0	7	NBC Norther	Road
		4 Togaho	515	601	Saiho HC	697	114	330	05.09.22	1	1	0	7	NBC Norther	Road
		5 Tunana	602	893	Saiho HC	695	134	356	06.09.22	1	1	0	9	NBC Norther	Road
		6 Kangoaho	185	285	Saiho HC	82	13	42	08.09.22	1	1	0	0	NBC Norther	Road
		7 Sakita 1	659	392	Saiho HC					1					Included Under Sakita 2
		8 Sakita VOP Bck	134	549	Saiho HC	318	55	175	09.09.22	1	1	0	5	NBC Norther	Road
		9 Togaho Com Sch	65	53	Saiho HC					1					Included Under Togaho
		10 Sakita Com Sch	28	39	Saiho HC					1					Included Under Sakita 2
		11 Sakita Last Vop Bck	201	0	Saiho HC					1					Included Under Sakita VOP Block
20	Papoga		3,851	5,366		5,454	1,035	2,726		12	10	10	244		
		1 Iwore	278	247	Sangara HC	281	50	146	26.08.22	1	1	1	13	FM	Road
		2 Gigisesusu	85	228	Sangara HC	235	48	124	30.08.22	1	1	1	15	FM	Road
		3 Ijikata	290	325	Sangara HC	513	86	251	09.09.22	1	1	1	8	FM	Road
		4 Jajau	584	686	Sangara HC	628	107	310	26.08.22	1	1	1	23	FM	Road
		5 Kanari	255	323	Sangara HC	400	79	202	26.08.22	1	1	1	15	FM	Road
		6 Papoga	846	1,487	Sangara HC	1,690	311	822	09.09.22	1	1	1	100	FM	Road
		7 Begahambo	310	441	Sangara HC	212	36	105	26.08.22	1	1	1	6	FM	Road
		8 Maneneta	326	187	Sangara HC	206	50	110	24.08.22	1	1	1	4	FM	Road
		9 Puhemo	420	0	Sangara HC					1					Covered under PHA
		10 Isuga	456	0	Sangara HC					1					Covered under PHA
		Taubender		273	Sangara HC	374	83	197	26.08.22	1	1	1	4	FM	Road
		Waru		1,169	Sangara HC	915	185	459	26.08.22	1	1	1	56	FM	Road
21	Ongoho		2,228	3,371		3,164	551	1,581		10	8	8	158		
		1 Ondahare	324	269	Sangara HC	219	33	105	25.08.22	1	1	1	10	FM	Road
		2 Girigirita	582	420	Sangara HC	564	100	283	25.08.22	1	1	1	6	FM	Road
		3 Oere	337	544	Sangara HC	477	90	237	25.08.22	1	1	1	26	FM	Road
		4 Ongoho	466	569	Sangara HC	659	127	350	25.08.22	1	1	1	81	FM	Road
		5 Ihiya	152	325	Sangara HC	424	67	203	25.08.22	1	1	1	11	FM	Road
		6 Totogata	105	145	Sangara HC	329	50	159	25.08.22	1	1	1	15	FM	Road
		7 Hunjeke	47	230	Sangara HC					1					Included Under Ondahare
		8 Sasovi	75	246	Sangara HC	340	63	168	25.08.22	1	1	1	5	FM	Road
		9 Girigirita Hamlet	140	316	Sangara HC	152	21	76	25.08.22	1	1	1	4	FM	Road
		Hongarata		306	Sangara HC					1					Included Under Iriyah
22	Ehu		1,381	1,924		2,896	488	1,442		12	11	11	67		

LLG	Ward	Village	2022 Population Based On 2000 Census	2022 Population Based On 2019 Survey	Health Centre	Population Surveyed	House Holds Surveyed	Nets Issued	Date Of Distribution	Villages	Digicel	Emobile	Houses With Radios	Radio Networks	Comments
	1	Sehoro 1 & 2	351	448	Sangara HC	654	100	323	27.08.22	1	1	1	26	FM	Road
	2	Sarukata	71	94	Sangara HC	312	47	157	26.08.22	1	1	1	0	FM	Road
	3	Gombususu	120	186	Sangara HC	224	41	112	25.08.22	1	1	1	15	FM	Road
	4	Paugu	180	91	Sangara HC					1					Included Under Hamba # 2
	5	Kipore	130	104	Sangara HC	206	37	103	27.08.22	1	1	1	0	FM	Road
	6	Ehu	152	166	Sangara HC	354	49	171	26.08.22	1	1	1	0	FM	Road
	7	Senani	245	161	Sangara HC	251	42	122	26.06.22	1	1	1	12	FM	Road
	8	Ponsusu VOP Bk	75	198	Sangara HC	189	31	103	27.08.22	1	1	1	7	FM	Road
		Bore		65	Sangara HC	131	20	63	28.08.22	1	1	1	2	FM	Road
		Hamba # 1		259	Sangara HC	226	50	116	26.08.22	1	1	1	5	FM	Road
		Hamba # 2		96	Sangara HC	220	50	111	26.08.22	1	1	1	0	FM	Road
	9	Kipore VOP Bk	57	53	Sangara HC	129	21	61	27.08.22	1	1	1	0	FM	Road
23		Ahora & Beuru	2,316	2,456		2,418	488	1,220		7	7	7	237		
	1	Darata	189	343	Sangara HC	103	33	54	25.08.22	1	1	1	13	FM	Road
	2	Beuru	363	481	Sangara HC	591	107	301	25.08.22	1	1	1	55	FM	Road
	3	Ahora	420	995	Sangara HC	328	69	161	26.08.22	1	1	1	9	FM	Road
	4	Ahora VOP Bk	574	0	Sangara HC	464	87	229	26.08.22	1	1	1	34	FM	Road
	5	Darata VOP Bk	308	309	Sangara HC	395	90	207	25.08.22	1	1	1	47	FM	Road
	6	Ahora Com School	83	28	Sangara HC	20	4	10	26.08.22	1	1	1	3	FM	Road
	7	Beuru Blocks	379	300	Sangara HC	517	98	258	25.08.22	1	1	1	76	FM	Road
24		West Ambogo	2,776	3,302		3,979	801	1,981		7	7	7	305		
	1	West Ambogo Block	2,478	1,890	Sangara HC	2,020	411	1,010	29.08.22	1	1	1	196	FM	Road
	2	Sangara Com School	91	587	Sangara HC	547	103	267	29.08.22	1	1	1	33	FM	Road
	3	Sangara Missn Station	20	228	Sangara HC	217	43	107	29.08.22	1	1	1	17	FM	Road
	4	Sangara Police Station	61	169	Sangara HC	112	22	57	28.08.22	1	1	1	6	FM	Road
	5	Sangara Health Centre	81	139	Sangara HC	193	38	94	28.08.22	1	1	1	5	FM	Road
	6	Sangara Voc Centre	45	289	Sangara HC	230	50	119	29.08.22	1	1	1	9	FM	Road
		Monge 1/2/3/4/85			Sangara HC	660	134	327	29.08.22	1	1	1	39	FM	Taken over from PHA Ijivitari
25		Sangara 1	6,466	5,454		6,958	1,256	3,469		12	10	10	398		
	1	Siroga	2,802	1,457	Sangara HC	1,909	351	964	18.08.22	1	1	1	123	FM	Road
		Epa (Incl Oil Palm Village)			Sangara HC	454	93	227	24.08.22	1	1	1	30	FM	Taken over from PHA Ijivitari
		Irigi Oil Palm Village (Irigi/Ambogo Estate)			Sangara HC	678	150	336	24.08.22	1	1	1	55	FM	Taken over from PHA Ijivitari
	2	Javuni	750	1,043	Sangara HC	860	159	433	19.08.22	1	1	1	45	FM	Road
	3	Arehe Block	389	612	Sangara HC	796	129	391	29.08.22	1	1	1	95	FM	Road
	4	The Ridge	324	339	Sangara HC	234	51	117	25.08.22	1	1	1	21	FM	Road
	5	Lutheran Area	229	357	Sangara HC	315	57	161	18.08.22	1	1	1	5	FM	Road
	6	Irihambo Village	223	547	Sangara HC					1					Included Under Irihambo-Ward 2
	7	Irihambo Village	511	0	Sangara HC	613	103	303	23.08.22	1	1	1	20	FM	Road
	8	Sangara Estate	39	37	Sangara HC	134	27	70	19.08.22	1	1	1	4	FM	Road
	9	Sangara Base	255	182	Sangara HC					1					Included Under Sangara Estate
	10	Moale	943	880	Sangara HC	965	136	467	20.08.22	1	1	1	0	FM	Road
26		Sangara 2	1,653	2,164		1,675	316	833		3	3	3	55		
	1	Lejo	225	0	Sangara HC										Moved up to Sumbiripa HOP
	2	Sumbiripa	1,174	1,339	Sangara HC	1,112	186	555	21.08.22	1	1	1	35	FM	Road
		Eveka		333	Sangara HC	225	57	112	27.08.22	1	1	1	0	FM	Road
	3	North Sangara Block	253	492	Sangara HC	338	73	166	27.08.22	1	1	1	20	FM	Road
27		Isivini	2,883	3,051		2,886	579	1,430		5	5	5	315		
	1	Isivini Oil Paml Bk	2,482	1,654	Sangara HC	1,903	386	947	23.08.22	1	1	1	212	FM	Road
	2	Isivini Com Sch	45	361	Sangara HC	286	60	137	23.08.22	1	1	1	36	FM	Road
	3	Isivini Police Station	59	461	Sangara HC	501	99	248	23.08.22	1	1	1	32	FM	Road
	4	Isivini OPIC	268	325	Sangara HC	159	26	78	23.08.22	1	1	1	28	FM	Road
	5	Isivini Mission/Station	30	249	Sangara HC	37	8	20	23.08.22	1	1	1	7	FM	Road
28		Horau	1,211	1,690		1,472	267	731		7	7	7	33		
	1	Wuwusi	132	126	Sangara HC	121	28	60	29.08.22	1	1	1	7	FM	Road
	2	Agenta	105	167	Sangara HC	115	18	58	27.08.22	1	1	1	3	FM	Road
	3	Horau	243	373	Sangara HC	201	41	96	27.08.22	1	1	1	1	FM	Road
	4	Huhuru	631	594	Sangara HC	524	90	265	26.08.22	1	1	1	16	FM	Road
	5	Barita	73	163	Sangara HC	55	10	26	29.08.22	1	1	1	2	FM	Road
	6	Jegarhambo	26	110	Sangara HC	148	30	75	27.08.22	1	1	1	3	FM	Road
		Kakisusu		156	Sangara HC	308	50	151	26.08.22	1	1	1	1	FM	Road
				0											
		Tamata Rural	23,810	21,989		21,882	3,706	11,030		83	54	0	491	47	
	1	Hurata	1,689	2,149		2,018	339	985		6	5	0	13		
	1	Maibasusu	126	212	Saiho HC2	131	18	66	04.09.22	1	1	0	2	NBC Norther	Road
	2	Hurata	468	633	Saiho HC2	606	100	302	23.08.22	1	1	0	2	NBC Norther	Road
	3	Sagere	470	728	Saiho HC2	685	121	326	23.08.22	1	1	0	1	NBC Norther	Road
	4	Aisi	107	70	Saiho HC2	75	11	38	04.09.22	1	0	0	2	NBC Norther	Road
	5	Toute	306	330	Saiho HC2	388	60	188	03.09.22	1	1	0	3	NBC Norther	Road
	6	Horusus	211	175	Saiho HC2	133	29	65	04.09.22	1	1	0	3	NBC Norther	Road
	2	Oita Tandi	1,985	2,061		1,873	339	933		9	8	0	33		
	1	Iva	156	242	Saiho HC2	133	30	65	04.09.22	1	1	0	4	NBC Norther	Road
	2	Batutu	89	142	Saiho HC2	131	22	64	04.09.22	1	0	0	1	NBC Norther	Road
	3	Sembasusu	318	225	Saiho HC2	242	37	117	04.09.22	1	1	0	8	NBC Norther	Road
	4	Oita Tandi	430	426	Saiho HC2	380	64	189	04.09.22	1	1	0	4	NBC Norther	Road
	5	Siai	495	514	Saiho HC2	451	86	234	04.09.22	1	1	0	7	NBC Norther	Road
	6	Evida	63	49	Saiho HC2	63	12	32	04.09.22	1	1	0	2	NBC Norther	Road
	7	Ombo Ragi	99	40	Saiho HC2	92	15	46	04.09.22	1	1	0	0	NBC Norther	Road
	8	Kukuru	122	136	Saiho HC2	184	38	90	04.09.22	1	1	0	1	NBC Norther	Road
	9	Magure Station	213	287	Saiho HC2	197	35	96	04.09.22	1	1	0	6	NBC Norther	Road
	3	Kikinonda	1,618	1,561		1,521	244	735		7	5	0	31		
	1	Dirou	168	212	Saiho HC2	158	31	75	23.08.22	1	0	0	9	NBC Norther	Road/1 Hr Trek
	2	Orobeari	146	121	Saiho HC2	157	22	78	23.08.22	1	1	0	7	NBC Norther	Road/1 Hr Trek
	3	Tambarasisi	203	170	Saiho HC2	196	33	89	23.08.22	1	0	0	0	NBC Norther	Road/1 Hr Trek
	4	Usuindari	302	327	Saiho HC2	256	48	127	23.08.22	1	1	0	2	NBC Norther	Road/1 Hr Trek

LLG	Ward	Village	2022 Population Based On 2000 Census	2022 Population Based On 2019 Survey	Health Centre	Population Surveyed	House Holds Surveyed	Nets Issued	Date Of Distribution	Villages	Digicel	Emobile	Houses With Radios	Radio Networks	Comments
	5	Kikinonda	308	267	Saiho HC2	282	39	137	23.08.22	1	1	0	12	NBC Norther	Road/1 Hr Trek
	6	Poho 1	185	184	Saiho HC2	344	48	168	23.08.22	1	1	0	0	NBC Norther	Road/1 Hr Trek
	7	Poho 2	112	157	Saiho HC2										Included Under Poho 1
	8	Ehenade	195	123	Saiho HC2	128	23	61	23.08.22	1	1	0	1	NBC Norther	Road/1 Hr Trek
4	Korisata		1,829	1,521		1,979	381	948		7	5	0	6		
	1	Borugasusu	371	327	Saiho HC2	382	74	183	23.08.22	1	0	0	0	NBC Norther	Road/2 Hr Trek
	2	Sengetari	152	166	Saiho HC2	196	34	90	23.08.22	1	1	0	2	NBC Norther	Road/2 Hr Trek
	3	Onombasusu	278	201	Saiho HC2	249	43	121	23.08.22	1	1	0	0	NBC Norther	Road/2 Hr Trek
	4	Korisata	564	472	Saiho HC2	593	100	291	23.08.22	1	1	0	4	NBC Norther	Road/2 Hr Trek
	5	Aurita	199	164	Saiho HC2	80	19	41	23.08.22	1	1	0	0	NBC Norther	Road/2 Hr Trek
	6	Sevape	130	42	Saiho HC2	66	11	32	23.08.22	1	1	0	0	NBC Norther	Road/2 Hr Trek
	7	Osako	136	149	Saiho HC2	413	100	190	23.08.22	1	0	0	0	NBC Norther	Road/2 Hr Trek
5	Utukiari		1,018	876		938	186	481		5	3	0	3		
	1	Ititi	193	166	Saiho HC2	148	27	75	24.08.22	1	0	0	1	NBC Norther	Road/3 Hr Trek
	2	Kaiari	264	165	Saiho HC2	192	44	102	24.08.22	1	0	0	0	NBC Norther	Road/3 Hr Trek
	3	Koninida	134	123	Saiho HC2	152	30	77	24.08.22	1	1	0	0	NBC Norther	Road/3 Hr Trek
	4	Petikiari	201	195	Saiho HC2	203	41	105	24.08.22	1	1	0	0	NBC Norther	Road/3 Hr Trek
	5	Utukiari	227	226	Saiho HC2	243	44	122	24.08.22	1	1	0	2	NBC Norther	Road/3 Hr Trek
6	Kurereda		971	711		831	132	394		2	0	0	0		
	1	Kurereda	576	348	loma HC	501	85	240	17.08.22	1	0	0	0	NBC & FM	Boat
	2	Wagadari & Cp-13	85	0	loma HC									NBC & FM	Included Under Dabo
	3	Dabo	310	363	loma HC	330	47	154	17.08.22	1	0	0	0	NBC & FM	Boat
7	Jino		2,598	2,425		2,433	383	1,149		10	0	0	89		
	1	Dodove	51	0	loma HC	37	7	18	17.08.22	1	0	0	3	NBC & FM	Boat/Trek
	2	Darara	444	504	loma HC	306	41	148	20.08.22	1	0	0	21	NBC & FM	Boat/Trek
	3	Aposi	43	58	loma HC	190	28	86	18.08.22	1	0	0	7	NBC & FM	Boat/Trek
	4	Biaga	77	31	loma HC	115	21	64	15.08.22	1	0	0	5	NBC & FM	Boat/Trek
	5	Kopatutu	63	55	loma HC	65	10	31	18.08.22	1	0	0	6	NBC & FM	Boat/Trek
	6	Iaudari No.1	728	736	loma HC	762	109	350	18.08.22	1	0	0	9	NBC & FM	Boat/Trek
	7	Iaudari No.2	655	639	loma HC	589	107	287	20.08.22	1	0	0	29	NBC & FM	Boat/Trek
	8	Jino	49	72	loma HC	33	7	16	18.08.22	1	0	0	1	NBC & FM	Boat/Trek
	9	Ginemai	237	201	loma HC	214	30	97	18.08.22	1	0	0	7	NBC & FM	Boat/Trek
	10	Ioma Stn Cp-2,8,9 & 301	251	129	loma HC	122	23	52	17.08.22	1	0	0	1	NBC & FM	Boat/Trek
8	Sia		1,338	1,154		1,171	218	610		5	4	0	59		
	1	Ombarere	36	82	Manau HC	64	15	35	18.08.22	1	1	0	5		Boat
	2	Bebewa	79	100	Manau HC	109	17	53	19.08.22	1	1	0	1		Boat
	3	Sia	779	649	Manau HC	620	106	324	18.08.22	1	1	0	14		Boat
	4	Taututu	363	324	Manau HC	378	80	198	18.08.22	1	1	0	39		Boat
	5	Boto Com School	81	0	Manau HC					1					Included Under Taututu
9	Manau		1,312	1,125		969	196	545		3	2	0	48		
	1	Mambututu	704	599	Manau HC	544	105	305	30.08.22	1	1	0	29		Boat
	2	Manau	572	527	Manau HC	425	91	240	29.08.22	1	1	0	19		Boat
	3	Manau Anglican Mssn	36	0	Manau HC					1					Included Under Manau
10	Deboin		1,014	810		757	124	397		2	0	0	18		
	1	Deboin, CP 6 & 402	992	810	Manau HC	757	124	397	28.08.22	1	0	0	18		Boat
	2	Dewade Com Sch	22	0	Manau HC					1					Included Under Deboin
11	Kotaure		945	1,092		1,091	189	551		4	3	0	63		
	1	Kotaure	420	501	Manau HC	531	84	270	06.09.22	1	1	0	31		Boat
	2	Yajiwari	172	211	Manau HC	205	34	106	06.09.22	1	1	0	12		Boat
	3	Jingada Cp 2 & 3	351	380	Manau HC	355	71	175	06.09.22	1	1	0	20		Boat
	4	Kotaure Com Sch	2	0	Manau HC					1					Included Under Kotaure
12	Tubi		1,016	830		886	174	474		4	3	0	11		
	1	Tabara	479	123	Manau HC	224	42	120	06.09.22	1	1	0	6		Boat
	2	Taire	87	504	Manau HC	547	109	289	07.09.22	1	1	0	3		Boat
	3	Baiari	349	0	Manau HC										Non Existant
	4	Tubi	97	203	Manau HC	115	23	65	07.09.22	1	1	0	2		Boat
	5	Tabara Com Sch	4	0	Manau HC					1					Included Under Tabara
13	Ainsi		1,184	757		695	136	391		3	3	0	29		
	1	Ainsi	458	196	Manau HC	167	43	98	07.09.22	1	1	0	0		Boat
	2	Karude	363	344	Manau HC	317	48	165	07.09.22	1	1	0	22		Boat
	3	Onombatutu	310	217	Manau HC	211	45	128	07.09.22	1	1	0	7		Boat
	4	Peio	53	0	Manau HC										Non Existant
14	Nindewari		983	1,098		1,095	181	563		4	3	0	7		
	1	Nindewari	418	536	Manau HC	631	106	312	07.09.22	1	1	0	0		Boat
	2	Wade	176	224	Manau HC	231	35	122	07.09.22	1	1	0	0		Boat
	3	Wagadari	363	338	Manau HC	233	40	129	08.09.22	1	1	0	7		Boat
	4	Nindewari Statn	26	0	Manau HC					1					Included Under Nindewari
15	Ewore		1,541	1,516		1,476	225	775		4	4	0	36		
	1	Ewore No.2	487	396	Manau HC	459	79	225	08.09.22	1	1	0	0		Boat
	2	Usibe	185	130	Manau HC	141	22	76	08.09.22	1	1	0	6		Boat
	3	Warawagi	95	318	Manau HC	279	42	153	09.09.22	1	1	0	0		Boat
	4	Mopide	140	0	Manau HC										Non Existant
	5	Ewore No.1	635	672	Manau HC	597	82	321	08.09.22	1	1	0	30		Boat
16	Bovera		1,553	1,287		1,173	107	595		5	3	0	16		
	1	Bovera	614	571	Manau HC	516	39	274	08.09.22	1	1	0	0		Boat
	2	Kaiware/Yeni	444	212	Manau HC					1					Included Under Kaiware Gabu
	3	Dautami & CP 05	270	297	Manau HC	343	31	151	08.09.22	1	1	0	0		Boat
	4	Kaiware/Gabu	146	207	Manau HC	314	37	170	08.09.22	1	1	0	16		Boat
	5	Maji Comp Base	79	0	Manau HC					1					Deserted camp
17	Tave		1,215	1,016		976	152	504		3	3	0	29		
	1	Boke	199	237	Manau HC	248	43	131	07.09.22	1	1	0	12		Boat
	2	Baba	107	0	Manau HC										Non Existant
	3	Wavei	14	0	Manau HC										Non Existant
	4	Ina	55	0	Manau HC										Non Existant
	5	Tave	602	547	Manau HC	544	85	286	07.09.22	1	1	0	17		Boat

LLG	Ward	Village	2022 Population Based On 2000 Census	2022 Population Based On 2019 Survey	Health Centre	Population Surveyed	House Holds Surveyed	Nets Issued	Date Of Distribution	Villages	Digicel	Bmobile	Houses With Radios	Radio Networks	Comments
	6	Dabari	142	0	Manau HC										Non Existant
	7	Waude	95	232	Manau HC	184	24	87	06.09.22	1	1	0	0		Boat
				0											
Kira Rural			4,903	3,270		2,017	382	1,028		22	0	0	0	21	
1		Peperware	777	443											
	1	Agutami	466	248	Kira HC										Not done yet due to tribal fighting
	2	Pepeware	231	132	Kira HC										Not done yet due to tribal fighting
	3	Inowa	79	63	Kira HC										Not done yet due to tribal fighting
2		Gobe	1,099	796											
	1	Gobe	387	273	Kira HC										Not done yet due to tribal fighting
	2	Iema	513	296	Kira HC										Not done yet due to tribal fighting
	3	Tube	180	227	Kira HC										Not done yet due to tribal fighting
	4	Buri	18	0	Kira HC										Not done yet due to tribal fighting
3		Upupure	1,125	778		771	150	396		8	0	0	0		
	1	Uno	97	68	Kira HC	60	12	33	28.08.22	1	Yes	0	0	NBC Oro	Trek
	2	Bakadu	162	103	Kira HC	111	20	55	28.08.22	1	Yes	0	0	NBC Oro	Trek
	3	Gimine	154	64	Kira HC	71	14	36	28.08.22	1	0	0	0	NBC Oro	Trek
	4	Kira	201	177	Kira HC	160	32	82	28.08.22	1	0	0	0	NBC Oro	Trek
	5	Avero	160	83	Kira HC	76	16	40	28.08.22	1	0	0	0	NBC Oro	Trek
	6	Jongendwa	144	59	Kira HC	55	12	29	28.08.22	1	0	0	0	NBC Oro	Trek
	7	Takere	144	111	Kira HC	124	20	65	28.08.22	1	0	0	0	NBC Oro	Trek
	8	Kira Govt Station 31	63	113	Kira HC	114	24	56	28.08.22	1	0	0	0		Trek
4		Ovasupu	1,237	781		788	144	399		10	0	0	0		
	1	Sekare	53	78	Kira HC	81	14	43	27.08.22	1	Yes	0	0	NBC Oro	Trek
	2	Repanage	138	67	Kira HC	84	15	42	27.08.22	1	Yes	0	0	NBC Oro	Trek
	3	Aroba	219	164	Kira HC	123	23	63	27.08.22	1	Yes	0	0	NBC Oro	Trek
	4	Juwera	205	125	Kira HC	97	17	50	27.08.22	1	Yes	0	0	NBC Oro	Trek
	5	Eroma	73	67	Kira HC	57	11	25	27.08.22	1	Yes	0	0	NBC Oro	Trek
	6	Avihase	109	52	Kira HC	52	9	27	27.08.22	1	Yes	0	0	NBC Oro	Trek
	7	Orouba	128	72	Kira HC	71	14	37	27.08.22	1	Yes	0	0	NBC Oro	Trek
	8	Dapeoba	87	68	Kira HC	98	16	49	27.08.22	1	Yes	0	0	NBC Oro	Trek
	9	Girei	69	0	Kira HC	57	11	28	27.08.22	1	Yes	0	0	NBC Oro	Trek
	10	Salasala	156	89	Kira HC	68	14	35	27.08.22	1	Yes	0	0	NBC Oro	Trek
5		Oibo	665	471		458	88	233		4	0	0	0		
	1	Oibo	154	102	Kira HC	94	21	48	29.08.22	1	0	0	0	NBC Oro	Trek
	2	Sedema	219	91	Kira HC	106	20	55	29.08.22	1	0	0	0	NBC Oro	Trek
	3	Sigilehari	154	166	Kira HC	137	26	71	29.08.22	1	0	0	0	NBC Oro	Trek
	4	Baharu	105	112	Kira HC	121	21	59	29.08.22	1	0	0	0	NBC Oro	Trek
	5	Gagaipo	32	0	Kira HC										Non Existant