

ROTARIANS AGAINST MALARIA



LONG LASTING INSECTICIDAL NET DISTRIBUTION REPORT

SOUTHERN HIGHLANDS PROVINCE Ialibu, Kagua Erave and Nipa Districts

Carried Out In Conjunction With The Provincial Government And Church
Health Services Of Southern Highlands Province

With Support From The Global Fund

23rd March to 18th April 2022



Table of Contents

Executive Summary.....	3
Background	4
Schedule.....	7
Methodology	7
Results.....	11
Conclusions	13
Acknowledgements	14
Appendix One – History Of LLIN Distribution In PNG.....	16
Appendix Two – Malaria In Southern Highlands Province Compared With Other Provinces.....	19
Appendix Three - Malaria By Altitude	21
Appendix Four – Other Photographs	22
Annex One	Detailed Distribution Data For Ialibu Pangia District
Annex Two	Detailed Distribution Data For Kagua Erave District
Annex Three	Detailed Distribution Data For Nipa District

Executive Summary

Southern Highlands Province is a Highlands Province in the western part of mainland of Papua New Guinea (PNG). It is a very mountainous province with low lying areas of below 400m in the Kutubu area of Nipa District, and very high mountains going up to 4,400 metres in the districts of Mendi and Imbonggu. Generally, very few people live in the low lying areas of the province (4% below 1200 metres), and many of these areas are very remote areas which can only be reached by airplane. Another 15% of the population live in areas between 1200 to 1600 metres where malaria is considered epidemic and it is only these areas and those below 1200 metres that received treated mosquito nets. For the remaining 81% of the population, they live in areas above 1600 metres to 2000 metres where malaria is considered negligible and above 2000 m where malaria is considered absent. For this reason, these areas do not receive mosquito nets as risk to malaria in these areas is considered almost impossible.

The family level survey and distribution of Long-Lasting Insecticidal Nets (LLINs) was carried out only in those areas that are below 1600 metres which are found in the districts of Ialibu Pangia, Kagua Erave and Nipa District. From 23rd March to 19th April 2022 all accessible areas were covered. Remote areas in Erave and Mount Bosavi requiring access by plane have yet to be done due to unavailability of aircraft during election period. However, these areas are now in the process of being covered and will be reported on in an additional report. In Mendi and Imbonggu District, no one received nets.

Table One shows the estimated population to be covered by the program together with the actual population found along with the number of LLINs distributed by district. In total, 90,502 LLINs were distributed to a population of 178,486 people. This resulted in distribution of 50.7 nets for every 100 people in the province.

TABLE ONE – Population And Nets Distributed

District	Population from 2000 Census	Population Of Targeted Areas In 2019	Target Estimated Population 2022	Population Surveyed 2022	House Holds Surveyed 2022	Nets Issued 2022	Growth Rate Against 2019 Survey	Nets Distributed Per 100 People
Ialibu Pangia	32,548	45,549	49,475	44,114	8,780	23,449	-0.53	53.2
Kagua Erave	17,988	33,197	42,220	31,577	5,632	15,994	-0.83	50.7
Nipa	32,884	85,067	105,374	102,795	18,427	51,059	3.21	49.7
Totals	83,420	163,813	197,069	178,486	32,839	90,502	1.44	50.7

A further 625 LLINs were donated to health centres as nets were surplus to requirement, were no longer in bales and in most cases could not be easily returned to a central location. These nets would be distributed to pregnant mothers and for use over hospital beds where needed.

The overall operational cost of the programme was **K459,058.30** Kina (Approximately US\$ 127,517) resulting in a cost of about 5.16 Kina or US\$1.43 per net delivered. This was about 18.0% below the anticipated budget. While there were saving in Human Resources and Car Hire there was a relatively big overspend in fuel. However, overall, considering the conditions, the price was reasonable for the work done.

Overall, the distribution went well in Southern Highlands Province with excellent collaboration from provincial and district health authorities which resulted in all targeted communities being reached (beside remote areas accessible by plane) and all household receiving nets.

Feedback from partners and communities suggest they were happy with the methodology used as the process appeared transparent to all concerned. However, as always, there were a few

families who complained that they did not receive enough nets but for the most part it is believed that this was a result of families not fully understanding the allocation system used.

Global Fund donated, supplied and covered all distribution costs for all the nets for Southern Highlands Province. The nets distributed in Southern Highlands Province were Yorkool nets which came from China. RAM hopes that these are better quality LLINs than those distributed in the last few years.

The history of LLIN distribution in PNG and Southern Highlands Province is discussed in Appendix One and the malaria situation and stratification of malaria in Southern Highlands Province are discussed in Appendix Two and Appendix Three. Historically it can be said that LLINs have had a tremendous impact on malaria in Papua New Guinea but recent distributions in lower lying provinces have not resulted in decreased malaria but malaria appears to have been practically eliminated from the highlands of PNG and we hope that these nets are sufficient to keep malaria at bay in all these areas of Southern Highlands for another three years.



Fig.1 – Initial Meetings With PHA In Mendi (Left) And Microplanning In Kagua Health Centre (Right)

Background

Rotarians Against Malaria (RAM) is a nationally based organisation which was formed in 1997 by the Port Moresby Rotary Club in recognition of the tremendous burden that malaria imposes on the people of PNG.

RAM has an organizational mandate to work in malaria control and the distribution of LLINs in Papua New Guinea and has been working for many years with the National Department of Health (NDOH) and other partners including multilateral and bilateral agencies such as UNICEF and WHO (World Health Organisation), NGOs and church groups. (See Appendix One for full history of LLIN Distribution)

Since 2010, RAM has been coordinating the distribution of nets to all districts and provinces on a three-year recurrent cycle. This effectively means that RAM visits every targeted village in PNG every three years. RAM has been funded by the Global Fund since 2009 and from 2017 to 2020 also from Against Malaria Foundation (AMF) which supplied PNG with the majority of its nets in 2017 and from 2018 onwards to all areas below 1600m only where most of the malaria transmission can be found. During the period 2017 to 2020, the Global Fund resources were therefore mainly used to fund the LLIN distribution costs and other relevant administration costs. However, in 2020, PNG was lucky to receive a donation of net from the Chinese Government and these were used for all areas between 1600-2000m of altitude.

It should also be noted that since 2015, the National Malaria Control Program no longer distributes nets in areas above 2000m as these are now considered too cold for malaria transmission to occur. The situation has changed in 2021. AMF no longer is a donor to PNG and all costs have now reverted to Global Fund. With this change, RAM will have difficulties covering areas from 1600-2000m but we are very fortunate in that the Global Fund allowed saving from 2020 to be used to procure nets for 2021 for this altitude. At present, the funding situation for LLIN distribution to altitudes of 1600-2000 remains tenuous for 2022 and 2023 and it appears at this moment that all distributions in the future will be limited to 1600m only.

Generally, LLINs have been distributed to household level throughout the country but when shortage of funds occurred, different strategies of distribution have been used as mentioned above.

PNG can be roughly divided into five epidemiological zones.

- a) Areas which lie above 2000m in altitude which no longer receive LLINs as malaria transmission is not considered likely at these altitudes.
- b) Low lying areas of the country up to 1200m which have stable malaria endemicity and often have poor access to health continue to have household distributions.
- c) Areas from 1200 to 1600m which are generally considered to be of low transmission potential but traditionally have had occasional malaria epidemics due to poor immunity and changing weather conditions. LLIN distribution continue in these settings.
- d) Highlands regions between 1600 to 2000m in altitude such as Mount Hagen which have low malaria endemicity and generally easy access to health services. These are low priority areas and when funding is not available are left out. However, to date, these areas have been covered. From 2015 to 2016, these areas received nets for Under Five children only, and since 2017, to date, RAM has managed to find alternative sources to cover these areas. For example, in 2020, nets for these areas have been sourced from the Chinese Government and in other areas from the Global Fund. Fortunately, there was sufficient funds to cover these areas in 2021. Sadly, from 2022 there are no funds to cover these areas.
- e) In urban and peri-urban areas such as Port Moresby which are low lying areas with easy access to health, nets will not be distributed during funding constraints. Nets to these areas will be supplied through the private sector. Similarly, due to funding constraints in 2015, Lae City had Under Five Campaign LLINs only.



Fig.2 – Initial Meetings With The Provincial Health Staff In Mendi

As a result of this stratification and when funds had been reduced such as at the end of 2014, areas above 2000m no longer received nets and areas from 1600 to 2000m only received under five campaigns in 2015 and 2016. However, fortunately, due to the LLIN donation from the Against Malaria Foundation (AMF) in 2017, all areas received household distribution of nets except areas above 2000m, and some urban areas such as NCD, Goroka, Mount Hagen and Mendi. After 2018, AMF only donated nets to areas below 1600m but the country has been lucky to find funding to fill this gap of between (1600-2000m) in 2019, 2020 and for 2021

through donations from the Global Fund (2018-2021) and the Chinese Government (2020). However, funding for areas between 1600-2000 metres has now stopped as the Global Fund allocations are not presently enough to cover these areas above 1600m.

One of the conditions of the AMF donation is that RAM would strengthen the way in which surveys are carried out. These new innovative processes are described in the Methodology Section. These methodologies are now being carried out since the beginning of 2017. The major change to the survey methodology suggested by AMF is that previously a village meeting was called after a survey was carried out where names of family members were read out to ensure that all households had been surveyed. Instead of this process, a summary of every village surveyed is posted for 24 hours in a public place so that villages can ensure that all their family members have been included in the survey. As a further verification process, members of RAM and local health staff team carry out random house surveys of 6% of households in every village to ensure that the survey process has been carried out correctly.

For household LLIN distributions, regardless of where they are carried out, they must include a survey and a distribution phase though implementation methods may considerably vary depending on specific circumstances. RAM's approach has been to concentrate on programme quality thus RAM develop methodologies that ensure that all recipients in an area actually receive nets and that this can be reported accurately.

The other major change to the original PNG programme of 2004 to 2009 carried out by the NDOH is that nets are allocated to families on a needs basis rather than simply the number of people in the family. Data analysis of National Capital District (NCD) data has shown that this gives a ratio of nets needed to be about 47 for every 100 people. In the previous LLINs distribution of Round-3 in 2006 to 2010, nets were allocated at a rate of one net to every 2.5 people. With the programme only receiving 80% of LLIN needs, and most provinces distributing for example two nets to families of three, in practically every province, nets ran out before the end of the distribution. The RAM programme makes all attempts to assure that this distribution anomaly does not happen by collecting all population information at the beginning of the program and then allocate the nets based on family needs. This strategy is practiced to ensure that all families receive nets throughout any given province. The only scenario where survey and net distribution may be done simultaneously is in very remote locations where it is not practically possible to return a second time to a location. This is particularly the case in remote villages which can only be reached by boat or very long treks and it is costly and impractical to return to the villages for a second time.



Fig.3 Microplanning In Erave HC (Left) And Mele HC (Right)

In terms of coordination, RAM officers are allocated to specific LLGs or health centres where they coordinate the programme together with local health staff. In this capacity, RAM officers

act as facilitators in terms of technical guidance to district health teams in each LLG as well as acting as financial officers and assuring quality control of activities taking place.

Schedule

Referring to Table Two, it can be seen that the main distribution in Southern Highlands started at the end of March and was completed one month later by the end of April. However, this timeframe does not include the fly in areas of Southern Highlands in Erave and Mount Bosavi. During the PNG elections, it was found practically impossible to charter airplanes to do this work. These areas will be covered in a separate report as the areas get done.

TABLE TWO
General Timetable Of Activities In Southern Highlands Province

District	Survey		Distribution	
	Start	Finish	Start	Finish
Ialibu Pangia	23.03.22	10.04.22	04.04.22	19.04.22
Kagua Erave	27.03.22	09.04.22	05.04.22	13.04.22
Nipa	26.03.22	28.04.22	01.04.22	12.04.22

Methodology

Prior to planning and implementation, a master list of all villages of Southern Highlands Province was drawn up using data from the 2000 Census and the last RAM survey of 2019 in Southern Highlands Province. Villages in the list were organised by LLG and Ward. In this master list, the estimated population for 2020 for each village was estimated and recorded in two ways. Firstly, the population of each village is estimated using population figures from the 2000 Census and the estimated annual growth rate for Southern Highlands Province and then secondly, by taking the population surveyed in 2017 and 2018 and applying the annual growth rate to each village. In addition to this, based on altitude maps, all villages in highlands provinces are categorised and colour coded by altitude zones of below 1200m, 1200 to 1600 metres, 1600 to 2000 metres and lastly those villages above 2000 metres. Only those villages below 1600 metres will receive nets.

In all areas, Health Centres form the hub from which distribution takes place to the respective villages in each health centre's catchment area. Therefore, with the planning data at hand, RAM staff work together with the Provincial Health Office to allocate every village to its nearest health centre (government or Church Based) and outlines how each village is reached from each health centre. From this it is possible to create a budget, estimate how many nets are needed to be sent to each health centre and work out any other logistic considerations such as use of airplanes or boats to deliver nets to some remote areas.

Once all logistical needs are calculated and nets delivered to the province or district, a RAM team will travel to the province. Once they are in the province, RAM officers are allocated to work with each health centre which becomes the centre of operations for that area.

With the arrival of RAM officers, each health facility identifies health staff members or non-health community volunteers to be involved with the programme. If local health staff are selected, then they are referred to as District Health Team (DHT) but if a non-health staff is selected then they are termed as a Team Leader. Both DHTs and Team Leaders are responsible for the survey and distribution of nets. Each DHT and Team Leader works only in the area in which the health facility is based.

Before any activities take place, RAM officers are expected to work with health staff and other team leaders to make detailed plans (micro-planning) of their activities for training, survey, verification and distribution of nets. This process involves making maps of the area, deciding how many teams are needed, and then making detailed work plans for each of the team members. This process also involves verifying that no villages have been left out of the census list and that the whole area is covered.

Also prior to field activities in any given LLG or health centre, a social awareness campaign was carried out in all villages informing villagers of the upcoming survey and distribution. This was also used as an opportunity for RAM officers to become familiar with each area. During this process, key malaria messages were also discussed with villagers such as the need to use LLINs every night.

During the social awareness campaign, a daylong training meeting is normally held at each health facility for all DHT members in that area who jointly carry out the micro-planning exercise. These training and micro-planning sessions as well as all other activities associated with the programme are coordinated by RAM project officers together with health counterparts at provincial and district levels. RAM officers also have the responsibility to ensure the LLINs operation is kept in line with the original budget.

Survey

The survey was carried out in the following way.

- 1) When arriving at a village and before starting the census process, a meeting was held with village elders explaining the process.
- 2) If village elders have an up to date list of all village occupants, the team would use this list to compile a census but still visit every household to confirm this information.
- 3) Where a village is small, e.g., less than 30 families, team members may carry out the census by themselves.



Fig.4 – Training Village Survey Volunteers In Kagua HC (Left) And Erave HC (Right)

- 4) Where villages are large, village volunteers were identified with the assistance of the village chiefs, elders, health staff and councillors. One volunteer was chosen for each group of about 50 families with volunteers chosen by natural divisions in the village e.g., clans where one volunteer would make a list of only one clan. These volunteers were trained to carry out the survey by actually surveying houses with the team leaders supervising and assessing the recording. Once the team leader was confident that the volunteers knew the survey methodology, they were left to continue with the household survey with survey

teams returning within an agreed period to verify the work of the survey volunteers, collect survey books and also to pay the survey volunteer, provided that the work was carried out correctly. The training of volunteers may occur in groups or individually depending on access to the village and its proximity to other villages.

- 5) For each household surveyed, all family members who normally reside at the household for a minimum of nine months were recorded by Name, Age, Sex and Relationship to head of household. All names and other information were recorded in the survey book with one survey form being used for each household.
- 6) After surveying a household, a white copy of the census form was given to the head of household or most senior person present in the household.
- 7) Where a whole household was absent, information was taken from the neighbours and the white survey form left with them.
- 8) In all cases, after the census/list was finished, all the information about the households and number of household members is entered into a summary sheet. This list is then hung in a public place where all villages can verify that the right number of family members for each household has been recorded and that all families have been included in the survey. After the list has been in a public place for 24 hours, then the volunteer requests for the RAM officer and or DHT to visit the village.
- 9) RAM officers and DHTs must visit three households randomly from each survey book (6%) and verify that the survey has been carried out correctly. Only when this has been done, then the volunteer can be paid.
- 10) If a village was surveyed by more than one volunteer, then volunteers were asked to work together so that lists can be hung together and the village volunteers can be verified at the same time. This process also ensures that households do not appear on more than one list. After this process, both the volunteers and the village elders sign a form to verify that this was done.
- 11) All village volunteers received a standard payment of 20 kina a day. Experience has shown that volunteers can usually only survey about 25 households a day, so for the most part, they would receive up to two days' allowance to complete a survey book (50 households).
- 12) All volunteers were also given a small training manual. Contained in this training manual are key health education messages about malaria which volunteers are expected to discuss with households. This perhaps is the only project in PNG that is able to reach down to potentially every household in the country.



Fig.5 – Survey Volunteer Training In Pangia Health Centre (Left) And Pomborel Health Centre (Right)

To aid with the survey, the master plan with names of all census units in all the wards in the district had been printed out and given to all the DHTs and team leaders. This document also provides the projected population per census unit as well as other information which might be useful to the area concerned.

After collecting survey data from each village, the information is immediately compared with the data on the master sheet. Where the surveyed population is very different from the projected population, the project staff make enquiries into the reasons for these discrepancies.

Following the survey, all data was entered into a computer where possible or entered into a master sheet of the area concerned. For each village, nets were allocated to each family on a needs basis and this is also entered into the computer or master sheet. This process ensured that all villages received nets and that there would be no shortfalls.

The needs basis in PNG is based on the assumption that children under the age of six sleep with their parents, after which boys and girls are grouped separately from their parents. Nets are also allocated based on the number of children in the house, their ages, and whether there are other dependents living in the households such as grandparents. A full description of the allocation system can be obtained from RAM officers but suffice to say a family of four could receive between one to four nets depending on the sex and age of family members.

Nets are allocated to each LLG based on assumed populations of each LLG and it was important prior to the distribution to ensure that when allocations had been carried out to families and villages that there were enough nets available to cover each and every family.

Distribution

There was no official launch for the LLINs distribution in Southern Highlands Province. However, prior to distribution there was a social awareness phase where the project teams informed communities about the arrival of the distribution teams, especially those accessible by road.

The LLINs were then distributed to teams depending on the needs of each village. The LLINs were then distributed by village or wards depending on whether villages were close together. In this latter case, a central location was identified in the ward and then distribution of nets was carried out. In terms of distribution sites, villages were organised in different ways to make the flow of nets easy and effective. However, the actual organisation depended on each team and the structure of the various groups receiving nets.

All net packaging was opened at distribution site with a district code printed on each net e.g., SHP22 meaning Southern Highlands Province 2022. This code is added to identify nets to assist in future monitoring exercises as well as discouraging householders from selling the nets on the open market.

Some examples of the process used to control the crowd includes;

- Arranging the people according to the serial numbers in the survey books e.g., 72001 - 72050 and then calling the names and the serial numbers.
- Call the names of the owners of the households, collect the white copy and give the nets.
- Wait for everyone to come to the distribution site, collect all the white copies and sort the copies with the pink copies. Call the names on the white copies and give the nets.

Some of the following control methods were used.

- Everyone who presented with a white copy was given LLINs at the distribution site with LLINs only given to the owner of the house or a member of the house whose name is written on the back of the survey form.
- Those people who lost the white receipts were left to the end of each distribution, with nets only being issued if the name of the person collecting the nets was found on the back of the pink copies.
- For those families who were absent at the time of distribution, their names were written in a form – MOSQUITO NETS HELD IN TRUST BY VILLAGE CHIEFS FORM and the nets allocated to missing families were given to chiefs or any person entrusted by the community with the forms for these families to collect their LLINs later.

- Householders are now being asked to make a thumb print as proof of delivery of nets to a household. The Global Fund had formally asked that householders should sign for delivery of nets. This was considered problematic as many householders are illiterate and even where householders can write, this process takes a long time in what is often a very chaotic and charged environment where speed is of the essence.

It should also be noted that surveys and distributions took place at more or less the same time in some remote places of Southern Highlands Province. This is particularly true for mountainous villages or villages at the end of rivers which might take several hours or days to reach. In these instances, estimations based on the 2000 Census data and local knowledge used to pre-allocate nets. Teams were then dispatched to these areas with nets. On arrival in these remote places, surveys took place and were immediately followed by a distribution based on the survey results.

Other details

In the case of Southern Highlands Province, all LLINs were ultimately delivered to Port Moresby by ship from China in six containers in two different shipments funded by the Global Fund and PNG Sustainable. These were a new type of nets known as Yahe. All these nets are light blue in colour. All nets arriving in Port Moresby first stored in the GFS Transport yard before being sent by road to Pangia (two containers) and Mendi (four containers). From these locations the nets were taken by vehicles to the various health facilities and then villages.



Fig.6 – Survey Verification In Kar (Left) And Williama (Right)

Results

Table Three shows the LLIN distribution data by district and Table Four by Local Level Government (LLG). These table give the actual population surveyed together with the number of LLINs distributed by district. In total, 90,503 LLINs were distributed to a population of 178,486 people in the two districts. This resulted in distribution of 50.7 nets for every 100 people in the province.

TABLE THREE
Nets Distributed At District Level In Southern Highlands Province

District	Population from 2000 Census	Population Of Targeted Areas In 2019	Target Estimated Population 2022	Population Surveyed 2022	House Holds Surveyed 2022	Nets Issued 2022	Nets Distributed Per 100 People
Ialibu Pangia	32,548	45,549	49,475	44,114	8,780	23,449	53.2
Kagua Erave	17,988	33,197	42,220	31,577	5,632	15,994	50.7
Nipa	32,884	85,067	105,374	102,795	18,427	51,059	49.7
Totals	83,420	163,813	197,069	178,486	32,839	90,502	50.7

TABLE FOUR
Nets Distributed At LLG Level In Southern Highlands Province

LLG	District	Population from 2000 Census	Population Of Targeted Areas In 2019	Target Estimated Population 2022	Population Surveyed 2022	House Holds Surveyed 2022	Nets Issued 2022	Nets Per 100 People
East Pangia Rural	lalibu Pangia	13,677	17,741	19,613	17,540	3,350	9,429	53.8
Wiru Rural	lalibu Pangia	18,871	27,808	29,862	26,574	5,430	14,020	52.8
Erave Rural	Kagua Erave	8,797	13,823	20,803	14,053	2,554	7,145	50.8
Kagua Rural	Kagua Erave	9,191	19,374	21,417	17,524	3,078	8,849	50.5
Lake Kutubu Rural	Nipa	10,885	21,947	24,263	24,700	4,334	12,268	49.7
Mount Bosavi Rural	Nipa	6,650	10,250	11,331	STILL TO BE DONE			
Poroma Rural	Nipa	21,999	63,120	69,780	78,095	14,093	38,791	49.7
Totals		90,070	174,063	197,069	178,486	32,839	90,502	50.7

Table Five shows that 299 nets were left over at the end of the program and were donated to health centres. In general, these nets were left where the nets were loose and no longer in bales or the nets were very few or the nets could be difficult to return to a central location. In general, these nets would be used for hospital beds or for antenatal mothers.

TABLE FIVE
Nets Donated To Health Facilities

District	LLG	HC	Donated
lalibu Pangia	East Pangia Rural	Williamma SHC	59
Kagua Erave	Erave Rural	Samberigi SHC	33
Kagua Erave	Erave Rural	Erave HC	19
Kagua Erave	Kagua Rural	Kagua HC	250
Nipa	Lake Kutubu Rural	Pimaga HC	34
Nipa	Lake Kutubu Rural	Waro HC	23
Nipa	Lake Kutubu Rural	Kantobo HC	11
Nipa	Lake Kutubu Rural	Inu HC	87
Nipa	Poroma Rural	Kar SHC	20
Nipa	Poroma Rural	Det HC	43
Nipa	Poroma Rural	Pomberel SHC2	46
TOTAL			625

TABLE SIX
Cost Of Programme In Southern Highlands Province (All Costs in Kina)

Expense Types	Budget	Actual	Variance	% Variance
Training	K12,400.00	K12,230.00	170.00	98.6
Human Resources	K160,112.72	K139,130.00	20,982.72	86.9
Fuel	35,910.00	K60,506.38	-24,596.38	168.5
Vehicle Hire	268,800.00	K241,750.00	27,050.00	89.9
Stationary	3,000.00	K1,056.72	1,943.28	35.2
5% Contingency	24,011.14	K4,385.20	19,625.94	18.3
Totals	K504,233.86	K459,058.30	K45,175.56	91.0

The overall operational cost of the programme was **K459,058.30** Kina (Approximately US\$ 127,517) resulting in a cost of about 5.16 Kina or US\$1.43 per net delivered. This was about 18.0% below the anticipated budget. While there were saving in Human Resources and Car Hire there was a relatively big overspend in fuel. However, overall, considering the conditions, the price was reasonable for the work done.

TABLE SEVEN
Cell and Radio Coverage In Southern Highlands Province

District	Villages	House Holds Surveyed	Digicel	Bmobile	Houses with Radios	Villages With Radio Networks
Ialibu Pangia	226	8,780	223	151	2,965	227
Kagua Erave	129	5,632	109	0	98	13
Nipa	351	18,427	346	0	3,984	237
Total	706	32,839	678	151	7,047	477

Referring to Table Seven, this shows the radio and cell phone coverage for Southern Highlands is remarkably good considering the remoteness of some of the areas covered. This makes health messaging relatively easy through radio and text messaging.

Conclusions

Overall, it can be said that the LLIN distribution in Southern Highlands was generally a huge success both in terms of results and great collaboration between staff from RAM, provincial and district health authorities, government health workers and the staff of the Catholic Church, Evangelical Church of PNG, Lutheran Church, Christian Union Church, PNG Bible Church Health Services.

Through this collaboration, the data suggests that all villages and practically all families in those villages received nets despite any local challenges.

There were some challenges which include:

- Due to the elections, we could not cover the remote area accessible by air. This was due to all aircraft companies giving priority to the election candidates. These fly off areas are still pending and will be covered at a later date.
- We used a crane to unload our containers in Mendi. We had a complaint from the owner to pay for damages as claimed by him.

On the positive side,

- There was excellent collaboration between the all health staff and RAM.
- Despite the challenges faced, officers managed to complete their operations successfully.

Other than this, as with other provinces in the country where RAM has operated in over the last ten years, the methodologies used this time, including survey verification processes appeared practical and were openly welcomed by both villagers and implementers, particularly the practice of hanging up the list of names in the middle of the village following a survey. This allowed communities to feel that they were part of a transparent process. This is not to say that perhaps some extra people managed to slip into the books, but in general, it was felt that

the system was fair and included practically everyone concerned. The use of the master lists also ensured that all villages were reached and accounted for.

The review of the data prior to the distribution was also important. This ensured that all villages and families received the correct numbers of nets. The 2000 Census Lists were very important to ensure that survey teams reached all villages: without the complete list of villages, it would be very difficult to make a detailed report.

The greatest complaint still received from communities was the number of nets they received. Even though the team explained the logic of how the allocation of nets is calculated, some families still expect one net per person, others expect it to be based on a fixed allocation based on the number of people in the family, and yet others thought they would be given nets based on the number of nets they stated they already had. This highlights that a better system of explaining the allocation system still needs to be developed. In general, unlike some previous districts covered by RAM and DHTs of Southern Highlands Province assisted in the allocation of the nets which meant they were in a better position to explain the distribution system on the ground. Nevertheless, despite all the difficulties involved, it would appear that the vast majority of community members accepted the outcome and there were no real problems or complaints encountered.

Acknowledgements

On behalf of the Rotarians Against Malaria household distribution team who worked in Ialibu Pangia, Kagua Erave and Nipa Kutubu districts, we would like to sincerely acknowledge and thank the Southern Highlands Province Health Authority and the District Health Staff of the three districts for the excellent help and cooperation during the Long Lasting Insecticide Nets (LLINs) distribution programme.

In particular, we would like to thank at provincial level Dr James Bisiri (Chief Executive Officer) and his team with special thanks to Mr George Epei (Director Public Health), Mr Michael Mombu (Deputy Director Public Health) and Mr Ripi Sipi (Provincial Malaria Supervisor).

For the district staff, we would like to sincerely thank all those who tirelessly took part in the programme, and in particular we would like to mention the following people who were instrumental in providing the local expertise and advice from planning to implementation of the programme in the three districts namely:

Ialibu Pangia District

Name	Occupation	Institution
Mr. Nathan Yondapu	Nursing Officer	Williamma Health Centre
Mrs. Lilly Lama	Officer in Charge	Mele Sub Health Centre
Mrs. Alin Yamo	Community Health Worker	Mele Sub Health Centre
Mr. Nelson Peri	Officer in Charge	Pangia Health Centre
Mr. Petrus Maira	Nursing Officer	Pangia Health Centre

Kagua Erave District

Name	Occupation	Institution
Mrs. Jennifer Nakisi	District Health Manger	Kagua Health Centre
Mr. Benny Noel	District Disease Control Officer	Kagua Health Centre
Ms. Catrine	Officer in Charge	Taminda Health Centre
Mr. Brendon Thomas	Nursing Officer	Taminda Health Centre
Mr. Wandy Kapas	Community Health Worker	Taminda Health Centre

Ps. Philip Dogoriki	Mission Station Manager	Sembirigi Sub Health Centre
Mr. Timothy Loma	Community Health Worker	Erave Health Centre

Nipa Kutubu District

Name	Occupation	Institution
Mr. Frank Erepana	Community Health Worker	Kar Health Centre
Mrs. Lucy	Community Health Worker	Kar Health Centre
Mr. Philemon Suii	Community Health Worker	Pimaga Health Centre
Mr. Paul Penda	Nursing Officer	Kantobo Health Centre
Mr. Nathan Garry	Community Health Worker	Det Health Centre
Mr. Kingsley Awabe	Officer in Charge	Waro Health Centre
Mr. Rodney Alu	Community Health Worker	Inu Health Centre
Mrs. Elizabeth Kim	Community Health Worker	Inu Health Centre
Ms. Erica Pon	Officer in Charge	Poroma Health Centre

RAM would like to specially acknowledge the support received from established and local service providers for logistical support namely; Mapai for transporting two containers from Lae to Southern Highlands and for having them stationed at Pangia Hospital yard. RAM also thanks Wizzy transport company for transporting five containers and Beto transport company for transporting one container from Lae to Southern Highlands and for having them stationed at Provincial Health Office yard in Mendi.

RAM also thanks Airport Hire Car, Pishon Hire Car, Fly hire car, Manawa Hire Car and all the local hire car owners for providing their service for this operation. We would not have reached many communities without the dedication of the drivers. RAM would like to also thank Puma for supplying bulk fuel for the operation.

RAM also thanks all the church run health facilities coordinated under Catholic Church, Evangelical Church of PNG, Lutheran Church, Christian Union Church, PNG Bible Church and lastly to all the Government run facilities for allowing their staff to work with the RAM team.

Last but not the least, RAM would like to extend our acknowledgement and appreciation to all the hard working volunteers and other local community leaders for ensuring all homes were surveyed and assisted in distributing all the nets. RAM thanks you all very much for your hard work, support and local expertise in making the overall program a success.

Appendix One – History Of LLIN Distribution In PNG

The use of Insecticide Treated Nets (ITNs) started in PNG in 1985 when the PNG Institute of Medical Research (IMR) conducted one of the first trials demonstrating the health impact of treating mosquito nets with insecticide. The study, done near Western, showed a reduction of *P. falciparum* incidence and prevalence in children below five years of age sleeping under permethrin-treated nets. The protective effect of insecticide-treated nets (ITNs) was also confirmed in many other trials around the world. As a consequence of such findings, the national malaria control program in PNG started emphasizing the use of ITNs in 1989. However, no regular or large-scale distribution of ITNs was carried out at this time.

In the following years, coverage with mosquito nets and other control interventions remained patchy and low in many parts of PNG. It was during this period that Rotarians Against Malaria (RAM) was created from the Port Moresby Rotary Club in 1997. Using a donation of 150,000 treated nets given to them from the National Department of Health (originally from AusAid), RAM successfully ran a revolving fund of nets in which nets were sold at a price which allowed the proceeds to buy more nets. RAM did this successfully for many years distributing about 45,000 treated nets a year from 2000 to 2004.

Prior to 2004, most treated nets had to be re-treated every six months or a year which requires a lot of work and organisation. In early 2004 everything changed with the introduction of Long-Lasting Insecticidal Nets (LLINs) which would last for 20 heavy duty washes and effectively no longer required to be treated repeated. This change in nets also coincided with the introduction of the Global Fund into PNG known as the Global Fund Round 3.

From 2005 to 2009 the malaria programme in PNG received and delivered about 2.3 million nets throughout the country at a rate of one net for every 2.5 people. The delivery of nets to village level was under the provincial health authorities and reached most parts of the country with Rotarians Against Malaria (RAM) being responsible in delivering the containers of nets to the provinces from Port Moresby and Lae where the nets arrived from overseas.

While the programme was very successful in some areas it was not so successful in others. Problems included slow release of funds from central to provincial level, some provinces not following technical guidelines given resulting in some areas not been covered, and technical and financial reporting leaving a lot to be desired in many of the provinces. When further funds became available in what is known as the Global Fund Round Eight, it was decided that Rotarians Against Malaria (RAM) would take over the coordination of the LLIN programme.

This change has resulted in RAM being responsible for the overall coordination of the LLIN distribution of LLINs in the country particularly in the areas of quantification, procurement, reporting and delivery to provincial and district level. However, the actual delivery of nets to village level is a collaboration between RAM, provincial health authorities and district health and health centre staff.

Fig.1 shows the distribution of nets to districts and provinces from 2006 to 2009 while Fig.2 shows the distribution of nets from 2010 to 2014 and Fig.3 shows the distribution from 2015 to 2017 which includes under five distributions in 2016 and 2017. Under Five distributions had been carried out in areas above 1600m and in Port Moresby and Lae City due to lack of funds. This situation changed when support from Against Malaria Foundation was received.

Up until December 2020, a total of 13.0 million LLINs had been distributed to household level under the coordination of RAM. Therefore, with the 2.5 million nets distributed from 2006 to 2009, this means that about 15.5 million nets have been delivered to household level in PNG since 2006. This is more than one net per every person in PNG. RAM has also distributed

about another 1.5 million nets to health centres for distribution to pregnant women and for prisons and boarding schools.

It should also be noted that alongside developments related to treated mosquito nets, the first cases of chloroquine-resistant malaria were reported in 1976. This progressed rapidly to widespread resistance of *P. falciparum*, and to a slightly lesser extent *P. vivax*, to chloroquine, amodiaquine and sulphadoxine-pyrimethamine (SP). In studies conducted between 2003 and 2005, even combination regimens of these drugs faced up to 29% resistance of *P. falciparum*². This situation together with Global Fund Round 8 also saw the introduction of artemether lumefantrine branded as Malawan and IPT (Intermittent Preventative Treatment) for antenatal women using Fansidar (Pyrimethamine Dapsone).

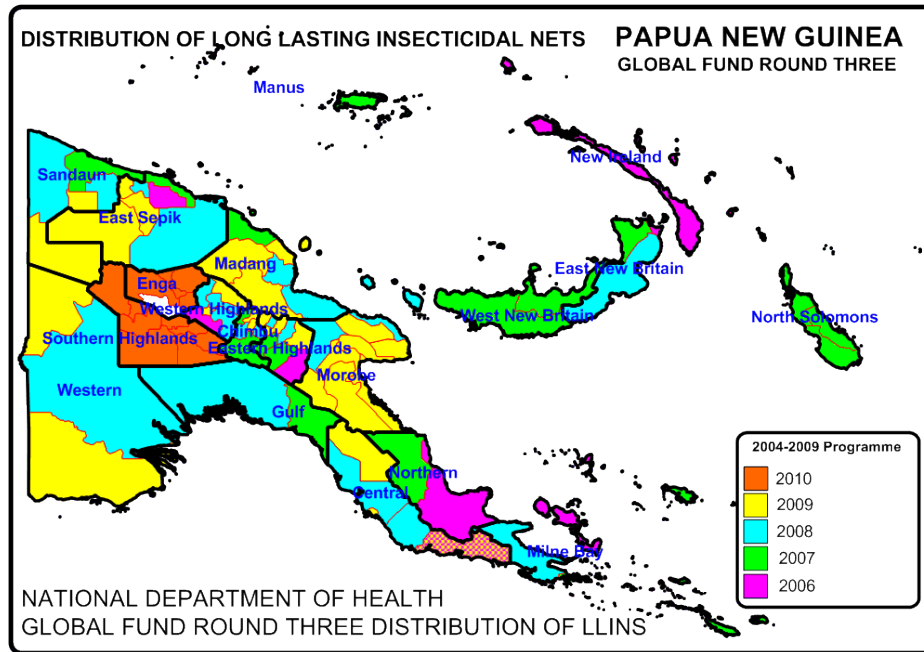


Fig. 1 Distribution Of Nets Under National Department Of Health From 2006 To 2010

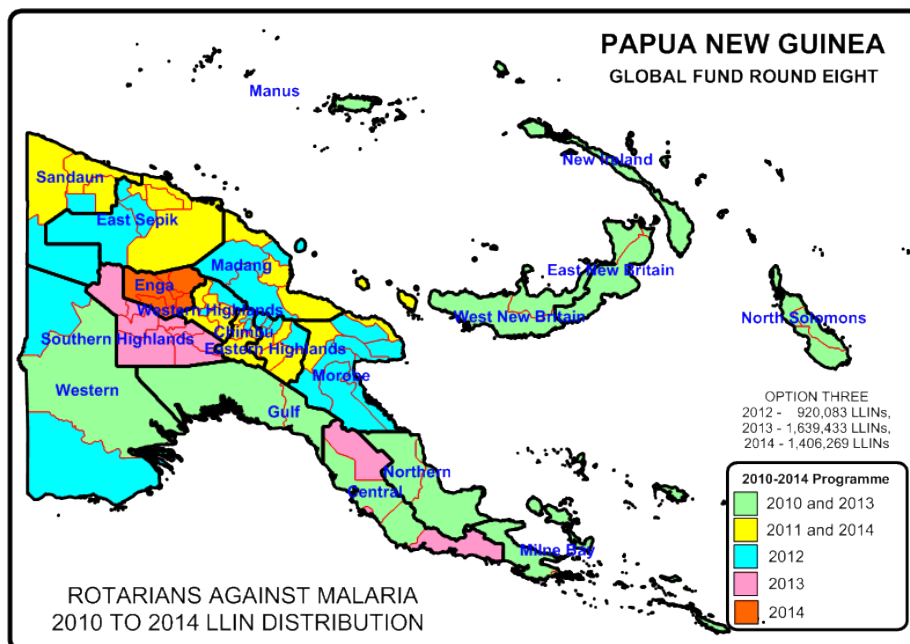


Fig.2 Distribution of LLIN Programme 2010 to 2014

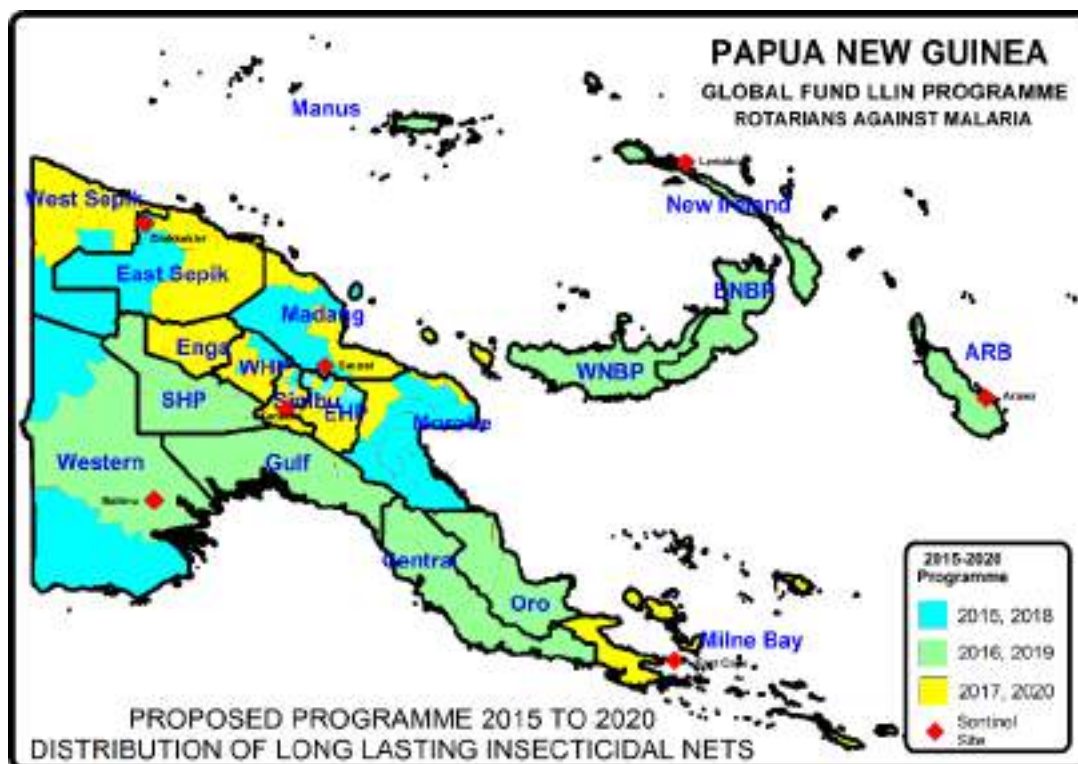


Fig.3 LLIN Distribution Programme 2015 to 2020

TABLE ONE - LLINs Delivered In PNG Under Coordination Of RAM From 2010

Period	Dates	Districts	Provinces	Nets Delivered	Type Of Net Delivered
Phase One (2010-2011)	Nov 09 - Oct 11	50 Districts	18 Provinces	1,890,448	Permanet 2
Year 3 (2012)	Nov 11 - Sep 12	27 Districts	10 Provinces	832,671	Permanet 2
Year 4 (2013)	Oct 12 - Sep 13	28 Districts	12 Provinces	1,210,391	Permanet 2
Year 5 (2014)	Oct 13 - Sep 14	23 Districts	11 Provinces	1,374,791	Permanet 2
Year 5 (2014) No Cost Extension	Oct 14 - Dec 14	Okapa, Lufa, Madang, Angoram, Maprik, Yangoru Saussi, Wewak, Aitape Lumi, Nuku and Vanimo Green	EHP, Madang, East Sepik and Sandaun	454,806	Permanet 2
Year 6 (2015)	Jan - Dec 2015	29 Districts	11 Provinces	932,822	Permanet 2
Year 7 (2016)	Jan - Dec 2016	27 Districts	13 Provinces	805,597	Permanet 2
Year 8 (2017)	Jan - Dec 2017	36 Districts	13 Provinces	1,543,947	Permanet 2
Year 9 (2018)	Jan - Dec 2018	27 Districts	11 Provinces	1,211,922	Permanet 2
Year 10 (2019)	Jan - Dec 2019	26 Districts	12 Provinces	1,266,525	Permanet 2
Year 11 (2020)	Jan - Dec 2020	28 Districts	13 Provinces	1,495,368	Safenet, Interceptor, Yorkool and Royal Sentry
Year 11 (2021)	Jan - Dec 2021	30 Districts	9 Provinces	1,301,456	Yahe
	Jan- Mar 2022	North and South Fly, Telefomin, Kairuku	Western, Sandaun, Central	164,212	Magnet, Yahe
	Apr - Jun 2022	Rigo, Kairuku Hiri, Goilala, Koroba Kopiajo, Komo Magarima, Nipa, Kagua Erave, Ialibu Pangia, Kerema	Southern Highlands, Hela, Central, Gulf	242,948	Magnet, Yorkool
New Funding Model (2015-2021)				8,964,797	
Round Eight (2010 - 2014)				5,763,107	
Overall Total Phase One and Phase Two And NFM				14,727,904	

Appendix Two – Malaria In Southern Highlands Province Compared With Other Provinces

Fig.1 shows the decrease of malaria from 2007 to 2015 in all provinces, Fig. 2 shows the actual malaria incidence in 2020 compared with other provinces and Fig.3 shows annual malaria trends from 2017 to 2021. In Southern Highlands, it can be seen from Fig.1 that malaria decreased from 2007 to 2015 by 85% which is similar to many of the other highlands areas of PNG. In Fig.2, in 2020 it can also be seen that in Southern Highlands the malaria incidence is 13 per 1000 which makes it the lowest incidences of malaria in PNG. Fig. 3 and Fig.4 show the malaria incidence by year with Fig.4 showing malaria incidence compared with net distributions. It can be noted that in general, LLIN distributions have resulted in decreases of malaria incidence. Unlike the coastal areas where malaria has risen again after 2016, malaria has remained low in Southern Highlands and we hope that the recent distribution of nets will continue to keep malaria at bay.

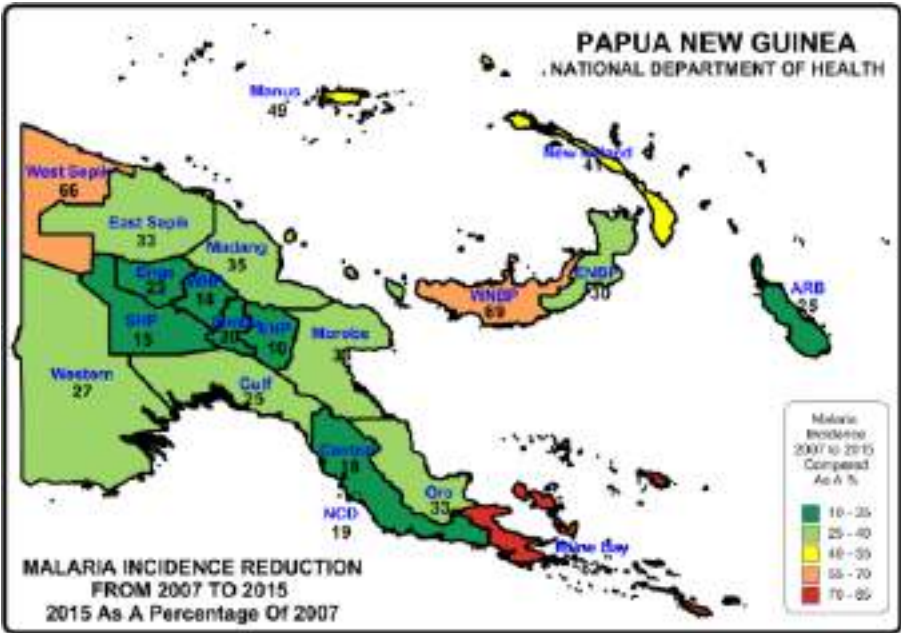


Fig.1 – Relative Reduction Of Malaria In Provinces Of PNG

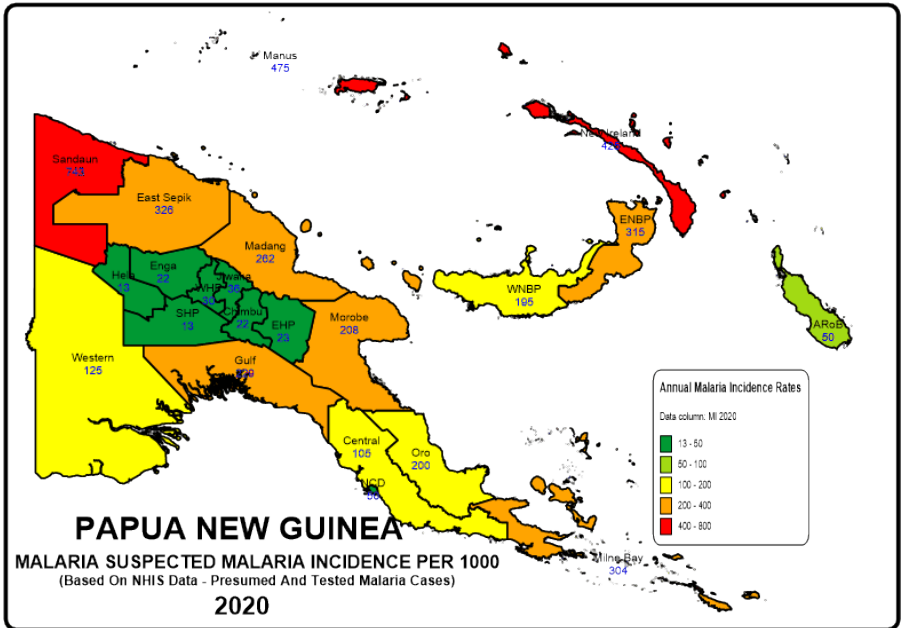


Fig.2 – Reported Malaria Incidence In 2020

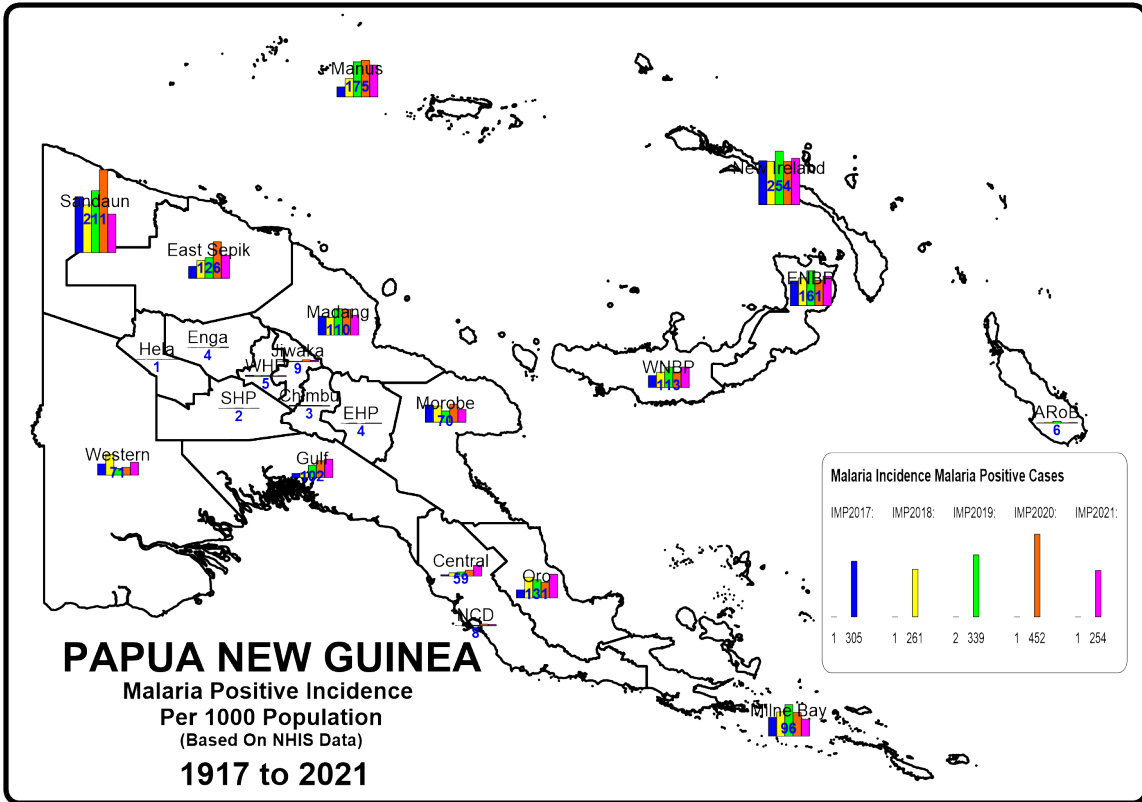


Fig. 3 - Reported Malaria Incidence In PNG From 2016 To 2020

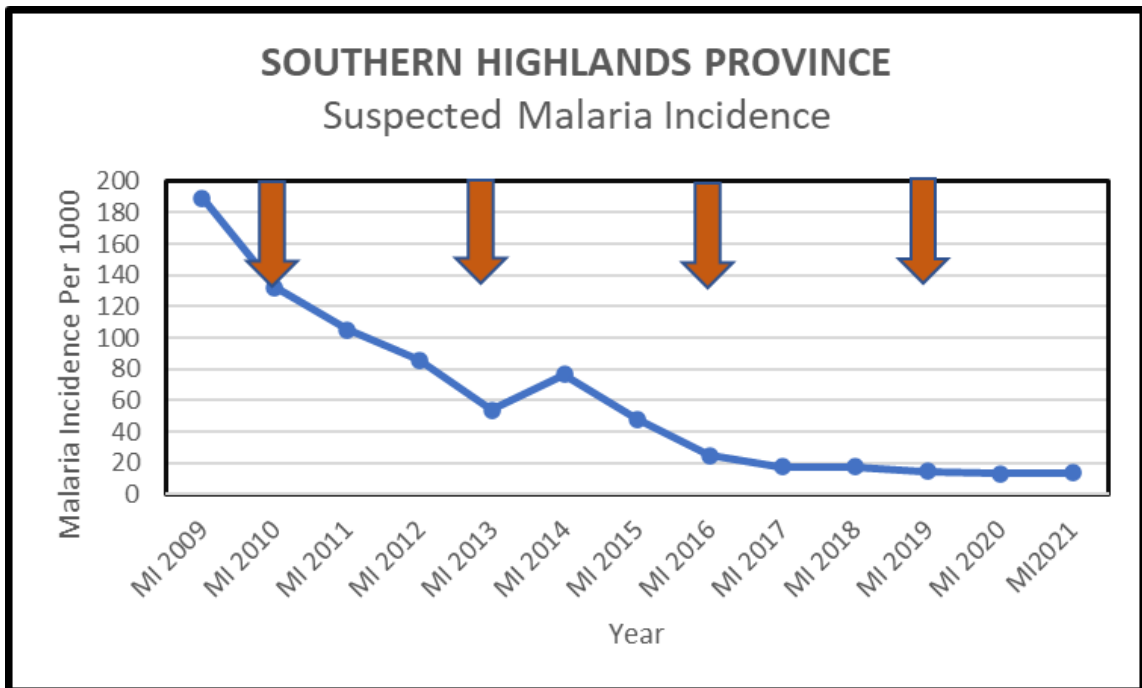
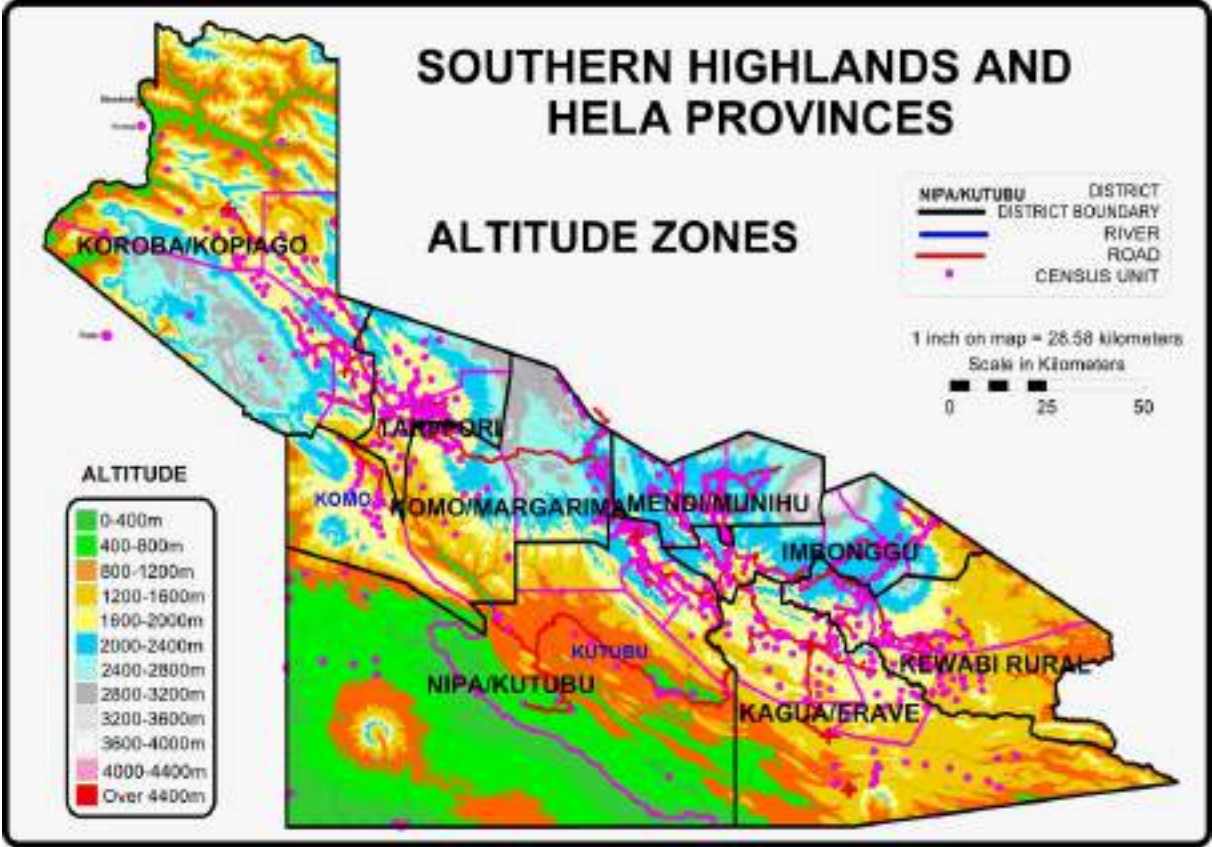


Fig. 4 – Malaria Incidence Versus Distribution Of Nets
Brown arrows represent LLIN distributions done in Southern Highlands in 2010 and 2013, 2016 and 2019. The distributions done in 2010 were carried out by the provincial health authorities with later distributions coordinated by RAM

Appendix Three - Malaria By Altitude

Southern Highlands Province is a Highlands Province in the western part of mainland of Papua New Guinea (PNG). It is a very mountainous province with low lying areas of below 400m in the Kutubu area of Nipa District, and very high mountains going up to 4,400 metres in the districts of Mendi and Imbonggu. Generally, very few people live in the low lying areas of the province (4% below 1200 metres), and many of these areas are very remote areas which can only be reached by airplane. Another 15% of the population live in areas between 1200 to 1600m where malaria is considered epidemic and it is only these areas and those below 1200 metres that received treated mosquito nets. For the remaining 81% of the population, they live in areas above 1600 metres to 2000 metres where malaria is considered negligible and above 2000 m where malaria is considered absent. For this reason, these areas do not receive mosquito nets as risk to malaria in these areas is considered almost impossible.

Fig. 1 Altitude Zones In Southern Highlands And Hela Province



Appendix Four – Other Photographs



Distributions In Kagua (Left) And Erave (Right)



Distributions In Pangia (Left) And Waro (Right)



Distributions Of LLINs In Kar (Left) And Pimaga (Right)



Distributions In Inu Health Centre (Left) and Kantobo (Right)

OTHER PICTURES



Distribution IN Pomberel (Left) And Pimaga (Right)



Fallen Crane (Left) And Vehicles Stuck In Mud (Right) In Erave



Boat Transport In Inu (Left) And Kantobo (Right)



Happy Customers In Kagua

ANNEX ONE

SOUTHERN HIGHLANDS PROVINCE
IALIBU PANGIA DISTRICT POPULATION 2022
LLIN DISTRIBUTION SUMMARY SHEET

VILLAGE CODING

Areas Above 2000m
Areas Between 1600m To 2000m
Areas Between 1200m to 1600m
Areas Below 1200m

LLG	WARD	VILLAGE	Estimated 2022 Population Based On 2000 Census	Estimated 2022 Population Based On 2019 Survey	Health Centre	Population Surveyed	House Holds Surveyed	Nets Issued	Date Of Distribution	Villages	Digicel	Bmobile	Houses With Radios	Radio Networks	Comments
IALIBU \ PANGIA			56,484	56,484		44,114	8,780	23,449		226	223	151	2,965	226	
EAST PANGIA RURAL			15,208	19,613		17,540	3,350	9,429		85	82	72	805	85	
1	MOLO		916	1,443		1,262	237	690		4	4	0	61		
		Molo	399	402	Mele SHC	433	67	224	18.04.22	1	1	0	0	105.9FM	Road
		Weipe	113	196	Mele SHC	172	45	107	19.04.22	1	1	0	26	105.9FM	Road
		Laiyo	170	428	Mele SHC	213	44	120	18.04.22	1	1	0	33	105.9FM	Road
		Napene	234	417	Mele SHC	444	81	239	18.04.22	1	1	0	2	105.9FM	Road
2	ALIA		633	563		737	94	418		2	2	2	21		
		Alia	216	226	Mele SHC	355	44	198	18.04.22	1	1	1	5	105.9FM	Road
		Maiyo	417	337	Mele SHC	382	50	220	18.04.22	1	1	1	16	105.9FM	Road
3	MOREA 1		607	683		501	90	288		3	3	1	0		
		Morea	136	217	Mele SHC	91	18	51	19.04.22	1	1	1	0	105.9FM	Road
		Alimbu	182	228	Mele SHC	202	35	110	19.04.22	1	1	0	0	105.9FM	Road
		Pondiyapu	289	239	Mele SHC	208	37	127	19.04.22	1	1	0	0	105.9FM	Road
4	MOREA 2		604	773		450	92	250		2	2	0	0		
		Tengai	410	670	Mele SHC	389	79	215	19.04.22	1	1	0	0	105.9FM	Road
		Kangu	86	103	Mele SHC	61	13	35	19.04.22	1	1	0	0	105.9FM	Road
		Naripe	108	0	Mele SHC										Abandoned
5	POKALE 1		438	545		350	71	195		3	3	3	5		
		Takenda	217	332	Mele SHC	201	42	117	18.04.22	1	1	1	4	105.9FM	Road
		Karanas	125	96	Mele SHC	74	14	40	18.04.22	1	1	1	0	105.9FM	Road
		Palipini	97	117	Mele SHC	75	15	38	18.04.22	1	1	1	1	105.9FM	Road
6	POKALE 2		468	588		482	83	280		3	3	3	12		
		Wambi	234	283	Mele SHC	266	42	147	18.04.22	1	1	1	12	105.9FM	Road
		Toia	135	140	Mele SHC	110	23	68	18.04.22	1	1	1	0	105.9FM	Road
		Yoninipini	100	165	Mele SHC	106	18	65	18.04.22	1	1	1	0	105.9FM	Road
7	APENDA 1		576	627		689	115	384		4	4	4	5		
		Apenda	345	244	Mele SHC	334	49	185	18.04.22	1	1	1	1	105.9FM	Road
		Takai	95	145	Mele SHC	146	29	82	18.04.22	1	1	1	0	105.9FM	Road
		Apenda Tumu	137	238	Mele SHC	141	23	77	18.04.22	1	1	1	0	105.9FM	Road
		Koyoringi		NEW	Mele SHC	68	14	40	18.04.22	1	1	1	4	105.9FM	Road
8	APENDA 2		493	652		512	114	289		3	3	1	2		
		Kakairungi	202	160	Mele SHC	196	40	105	18.04.22	1	1	0	0	105.9FM	Road
		Pawai	188	375	Mele SHC	209	50	121	18.04.22	1	1	0	1	105.9FM	Road
		Apenda School	102	117	Mele SHC	107	24	63	18.04.22	1	1	1	1	105.9FM	Road
9	MELE 1		244	315		291	55	152		2	2	2	0		
		Talepiko	216	214	Mele SHC	237	47	125	19.04.22	1	1	1	0	105.9FM	Road
		Mele Mission	28	101	Mele SHC	54	8	27	19.04.22	1	1	1	0	105.9FM	Road
10	MELE 2		314	396		366	70	197		3	3	3	5		
		Mele	130	159	Mele SHC	141	30	78	19.04.22	1	1	1	5	105.9FM	Road
		Palamele	57	87	Mele SHC	74	13	39	19.04.22	1	1	1	0	105.9FM	Road
		Kangeneyapu	127	149	Mele SHC	151	27	80	19.04.22	1	1	1	0	105.9FM	Road
11	KUMIANE		352	321		398	81	216		3	3	3	5		
		Kumiane	235	126	Mele SHC	251	50	136	19.04.22	1	1	1	4	105.9FM	Road
		Pondialibu	100	98	Mele SHC	132	27	72	19.04.22	1	1	1	1	105.9FM	Road
		Kumiane Community S	18	96	Mele SHC	15	4	8	19.04.22	1	1	1	0	105.9FM	Road
12	PONDI		829	1,117		995	221	508		4	4	4	12		
		Pondi	291	415	Pangia HC	321	70	165	11.04.22	1	1	1	0	Radio Light	Road
		Tindue	190	208	Pangia HC	225	50	118	12.04.22	1	1	1	0	Radio Light	Road
		Lawiri	54	96	Pangia HC	50	10	24	10.04.22	1	1	1	0	Radio Light	Road
		Keremini	294	398	Pangia HC	399	91	201	10.04.22	1	1	1	12	Radio Light	Road
13	PANGIA STATION		506	997		1,054	224	614		1	1	1	1		
		Pangia Station	506	997	Pangia HC	1,054	224	614	11.04.22	1	1	1	1	Radio Light	Road
14	MEIA		1,332	1,438		1,302	265	696		7	7	7	119		
		Maia	395	302	Pangia HC	311	65	169	09.04.22	1	1	1	0	Radio Light	Road
		Wapeleyapu	280	411	Pangia HC	237	55	132	11.04.22	1	1	1	37	Radio Light	Road
		Peai	119	127	Pangia HC	141	20	72	09.04.22	1	1	1	11	Radio Light	Road
		Yaraporai	58	244	Pangia HC	165	36	92	11.04.22	1	1	1	36	Radio Light	Road
		Liriyapu	131	70	Pangia HC	189	33	100	09.04.22	1	1	1	20	Radio Light	Road
		Keleariri	232	164	Pangia HC	186	37	92	09.04.22	1	1	1	15	Radio Light	Road
		Kembulu	117	121	Pangia HC	73	19	39	09.04.22	1	1	1	0	Radio Light	Road
15	KAUWO 1		533	766		705	154	363		3	3	3	136		
		Ange	102	148	Pangia HC	156	32	77	11.04.22	1	1	1	26	Radio Light	Road
		Kali	312	444	Pangia HC	333	72	172	11.04.22	1	1	1	63	Radio Light	Road
		Koinge	118	174	Pangia HC	216	50	114	11.04.22	1	1	1	47	Radio Light	Road
16	KAUWO 2		513	757		694	138	389		3	3	3	94		
		Tiripini	96	134	Pangia HC	283	49	155	10.04.22	1	1	1	49	Radio Light	Road
		Punu	136	197	Pangia HC									Radio Light	Non Existant
		Kali	99	108	Pangia HC	205	50	117	10.04.22	1	1	1	9	Radio Light	Road
		Kauwo Tumu	66	123	Pangia HC	206	39	117	10.04.22	1	1	1	36	Radio Light	Road
		Kaliyapu	117	196	Pangia HC									Radio Light	Non Existant
17	KAUWO 3		311	484		487	77	250		4	4	4	0		
		Kali	48	67	Pangia HC	64	9	32	11.04.22	1	1	1	0	Radio Light	Road
		Mungupini	115	150	Pangia HC	235	38	119	11.04.22	1	1	1	0	Radio Light	Road
		Yalepine	37	67	Pangia HC	29	3	15	11.04.22	1	1	1	0	Radio Light	Road
		Ange 2	112	199	Pangia HC	159	27	84	11.04.22	1	1	1	0	Radio Light	Road
18	LEKA \ KOIYA		795	733		572	99	297		4	4	4	24		
		Koiya	291	262	Pangia HC	177	29	90	12.04.22	1	1	1	3	Radio Light	Road
		Piliyapu	199	295	Pangia HC	175	30	93	12.04.22	1	1	1	13	Radio Light	Road
		Kendapi	163	176	Pangia HC	53	10	26	12.04.22	1	1	1	4	Radio Light	Road

LLG	WARD	VILLAGE	Estimated 2022 Population Based On 2000 Census	Estimated 2022 Population Based On 2019 Survey	Health Centre	Population Surveyed	House Holds Surveyed	Nets Issued	Date Of Distribution	Villages	Digicel	Bmobile	Houses With Radios	Radio Networks	Comments
		Punu	141	0	Pangia HC	167	30	88	12.04.22	1	1	1	4	Radio Light	Road
19	YUNGILI		825	1,306		828	200	438		6	4	4	129		
		Yungili	372	272	Pangia HC	185	50	97	12.04.22	1	1	1	32	Radio Light	Road
		Kamenda	116	111	Pangia HC	249	50	125	12.04.22	1	1	1	36	Radio Light	Road
		Luapini	59	137	Pangia HC	209	50	115	12.04.22	1	1	1	14	Radio Light	Road
		Kawareke	278	171	Pangia HC	185	50	101	12.04.22	1	1	1	47	Radio Light	Road
		Nasipi		354	Pangia HC					1					To cover by chopper
		Yopase		261	Pangia HC					1					To cover by chopper
20	TINDUA 1		186	154		237	29	114		1	1	1	3		
		Wapere	186	154	Pangia HC	237	29	114	11.04.22	1	1	1	3	Radio Light	Road
21	TINDUA 2		636	633		619	91	352		2	1	1	0		
		Tongomane	397	520	Pangia HC	619	91	352	11.04.22	1	1	1	0	Radio Light	Road
		Tindua Community Sch	239	114	Pangia HC					1				Radio Light	Included Under Tongomane
22	WALAPAPE 1		947	1,369		995	248	550		5	5	5	1		
		Kerepali	228	153	Pangia HC	211	50	114	10.04.22	1	1	1	0	Radio Light	Road
		Walapape	345	296	Pangia HC	250	52	131	10.04.22	1	1	1	0	Radio Light	Road
		Kupiane	137	343	Pangia HC	167	35	95	11.04.22	1	1	1	0	Radio Light	Road
		Paperali	111	349	Pangia HC	205	71	115	11.04.22	1	1	1	1	Radio Light	Road
		Kendana	127	228	Pangia HC	162	40	95	11.04.22	1	1	1	0	Radio Light	Road
23	WALAPAPE 2		469	375		348	60	172		4	4	4	20		
		Kelopine	88	0	Pangia HC	70	13	36	12.04.22	1	1	1	3	Radio Light	Road
		Kerana	281	121	Pangia HC	155	25	75	12.04.22	1	1	1	8	Radio Light	Road
		Lembo	48	118	Pangia HC	70	13	34	12.04.22	1	1	1	4	Radio Light	Road
		Piliyapu	52	136	Pangia HC	53	9	27	11.04.22	1	1	1	5	Radio Light	Road
24	WALUPOU 1		627	886		734	135	361		3	3	3	82		
		Walupou	279	419	Pangia HC	464	84	224	11.04.22	1	1	1	57	Radio Light	Road
		Rai 1	202	287	Pangia HC	206	31	104	12.04.22	1	1	1	12	Radio Light	Road
		Katina	146	179	Pangia HC	64	20	33	12.04.22	1	1	1	13	Radio Light	Road
25	WALUPOU 2		203	426		417	76	212		2	2	2	68		
		Paura	182	178	Pangia HC	173	32	89	12.04.22	1	1	1	26	Radio Light	Road
		Pembu	21	248	Pangia HC	244	44	123	12.04.22	1	1	1	42	Radio Light	Road
26	MONDADA		851	1,268		1,515	231	754		4	4	4	0		
		Mondada	266	454	Pangia HC	583	80	291	11.04.22	1	1	1	0	Radio Light	Road
		Lurane	99	98	Pangia HC	141	20	69	11.04.22	1	1	1	0	Radio Light	Road
		Yomonou	261	358	Pangia HC	377	63	185	10.04.22	1	1	1	0	Radio Light	Road
		Pouka	225	357	Pangia HC	414	68	209	10.04.22	1	1	1	0	Radio Light	Road
				0											
IALIBU URBAN			6,092	0		0	0	0		0	0	0	0		
1	IALIBU STATION 1		425	0											
		Yakena	147	0	Ialibu Hos.										Road
		East Wood	27	0	Ialibu Hos.										Road
		Lenege	32	0	Ialibu Hos.										Road
		Paipuri 1	46	0	Ialibu Hos.										Road
		Paipuri 2	49	0	Ialibu Hos.										Road
		Katawama	86	0	Ialibu Hos.										Road
		Paka Hil	39	0	Ialibu Hos.										Road
2	IALIBU STATION 2		197	0											
		Kepel 1	49	0	Ialibu Hos.										Road
		Kurirana	52	0	Ialibu Hos.										Road
		West Kuri	96	0	Ialibu Hos.										Road
3	IALIBU STATION 3		119	0											
		Raimanda	73	0	Ialibu Hos.										Road
		West Kuri	46	0	Ialibu Hos.										Road
4	YAMEYAME		1,614	0											
		Yameyame	400	0	Ialibu Hos.										Road
		Yamba	311	0	Ialibu Hos.										Road
		Kemboli	272	0	Ialibu Hos.										Road
		Lama/Punu	630	0	Ialibu Hos.										Road
5	TOPOPUL 1		792	0											
		Kuli	242	0	Ialibu Hos.										Road
		Kapola	229	0	Ialibu Hos.										Road
		Sk Compound	219	0	Ialibu Hos.										Road
		Kepel 1	101	0	Ialibu Hos.										Road
6	TOPOPUL 2		940	0											
		Remonda	207	0	Ialibu Hos.										Road
		Mission Station	126	0	Ialibu Hos.										Road
		Yakena	125	0	Ialibu Hos.										Road
		Winjo Pena	210	0	Ialibu Hos.										Road
		Mendo Pena	202	0	Ialibu Hos.										Road
		Kepiki Pena	70	0	Ialibu Hos.										Road
7	KENDAGL 2		525	0											
		Pilipili Island 1	236	0	Ialibu Hos.										Road
		Pilipili Island 2	173	0	Ialibu Hos.										Road
		Pilipili Island 3	103	0	Ialibu Hos.										Road
		Marapugl	12	0	Ialibu Hos.										Road
8	IALIBU URBAN		1,481	0											
		West Kuri / Ialibu High S	275	0	Ialibu Hos.										Road
		Lutheran Mission	673	0	Ialibu Hos.										Road
		Catholic Mission	534	0	Ialibu Hos.										Road
				0											
KEWABI RURAL			14,842	7,009		0	0	0		0	0	0	0		
1	KEPIKI 1		718	0											
		Karanas	258	0	Ialibu Hos.										Road
		Kondeali	147	0	Ialibu Hos.										Road
		Palanda	47	0	Ialibu Hos.										Road
		Yamanda	70	0	Ialibu Hos.										Road

LLG	WARD	VILLAGE	Estimated 2022 Population Based On 2000 Census	Estimated 2022 Population Based On 2019 Survey	Health Centre	Population Surveyed	House Holds Surveyed	Nets Issued	Date Of Distribution	Villages	Digicel	Bmobile	Houses With Radios	Radio Networks	Comments
		Lakira	197	0	Ialibu Hos.										Road
2	KEPIKI 2		783	0											
		Riwi	389	0	Ialibu Hos.										Road
		Sukuloma	171	0	Ialibu Hos.										Road
		Isale	153	0	Ialibu Hos.										Road
		Remonda	69	0	Ialibu Hos.										Road
3	WANGAI		907	1,295											
		Wangai	90		Ialibu Hos.										Road
		Kombeata	137		Ialibu Hos.										Road
		Mala	73		Ialibu Hos.										Road
		Riro	165		Ialibu Hos.										Road
		Masane	131		Ialibu Hos.										Road
		Imuma	311		Ialibu Hos.										Road
		Panda			Ialibu Hos.										Road
		Mero			Ialibu Hos.										Road
4	YATE		604	1,228											
		Yate	85		Ialibu Hos.										Road
		Yapina	149		Ialibu Hos.										Road
		Rawame	92		Ialibu Hos.										Road
		Randali	113		Ialibu Hos.										Road
		Pokore	115		Ialibu Hos.										Road
		Yomai-Ya	50		Ialibu Hos.										Road
5	MULI 1		1,044	2,202											
		Kaploloma	99		Muli SHC										Road
		Rumand Muli Hsc	87		Muli SHC										Road
		Yaimata	105		Muli SHC										Road
		Kuligali	128		Muli SHC										Road
		Rakeanda	59		Muli SHC										Road
		Kanda	217		Muli SHC										Road
		Pulumita	70		Muli SHC										Road
		Kaitali	130		Muli SHC										Road
		Pandarana (Wara Kuni)	150		Muli SHC										Road
6	MULI 2		466	743											
		Mampiranda	138		Muli SHC										Road
		Wapai	74		Muli SHC										Road
		Pone	73		Muli SHC										Road
		Wataloma	34		Muli SHC										Road
		Raita	50		Muli SHC										Road
		Randalo	58		Muli SHC										Road
		Yakoya	38		Muli SHC										Road
7	PAIPA		1,341	1,541											
		Kitada	73		Muli SHC										Road
		Urudere	314		Muli SHC										Road
		Katiloma	76		Muli SHC										Road
		Kapolore	81		Muli SHC										Road
		Waima	301		Muli SHC										Road
		Rewere	33		Muli SHC										Road
		Raita	177		Muli SHC										Road
		Yawimapu	249		Muli SHC										Road
		Rakeda	37		Muli SHC										Road
8	YARENA		945	0											
		Yarena	286	0	Muli SHC										Road
		Kenda	321	0	Muli SHC										Road
		Pandarana	149	0	Muli SHC										Road
		Pawia	189	0	Muli SHC										Road
9	PALE		1,340	0											
		Mulibo	169	0	Muli SHC										Road
		Lomali	148	0	Muli SHC										Road
		Palekama	82	0	Muli SHC										Road
		Kambi Kapu	120	0	Muli SHC										Road
		Kini	147	0	Muli SHC										Road
		Rala	167	0	Muli SHC										Road
		Ripu	69	0	Muli SHC										Road
		Yokere	88	0	Muli SHC										Road
		Rakuare	266	0	Muli SHC										Road
		Kea	85	0	Muli SHC										Road
10	MAMBI		744	0											
		Loiyand	171	0	Muli SHC										Trek
		Ure	121	0	Muli SHC										Trek
		Rake	176	0	Muli SHC										Trek
		Pundura	172	0	Muli SHC										Trek
		Sipirare	58	0	Muli SHC										Trek
		Opa	46	0	Muli SHC										Trek
11	MUNKU 1		744	0											
		Tiri	58	0	Muli SHC										Trek
		Asumare	48	0	Muli SHC										Trek
		Walurana	82	0	Muli SHC										Trek
		Aku	128	0	Muli SHC										Trek
		Wapai	110	0	Muli SHC										Trek
		Waponamere	123	0	Muli SHC										Trek
		Ma'aria	77	0	Muli SHC										Trek
		Ipisene	49	0	Muli SHC										Trek
		Irawari	69	0	Muli SHC										Trek
12	MUNKU 2		319	0											
		Papoloma	140	0	Ialibu Hos.										Road/Trek
		Pialere	87	0	Ialibu Hos.										Road/Trek

LLG	WARD	VILLAGE	Estimated 2022 Population Based On 2000 Census	Estimated 2022 Population Based On 2019 Survey	Health Centre	Population Surveyed	House Holds Surveyed	Nets Issued	Date Of Distribution	Villages	Digicel	Bmobile	Houses With Radios	Radio Networks	Comments
		Aita	29	0	Ialibu Hos.										Road/Trek
		Pegare	63	0	Ialibu Hos.										Road/Trek
13	MAKURA 1		769	0											
		Kapola	119	0	Ialibu Hos.										Road/Trek
		Makera	71	0	Ialibu Hos.										Road/Trek
		Yaipa	131	0	Ialibu Hos.										Road/Trek
		Paware	221	0	Ialibu Hos.										Road/Trek
		Ata	127	0	Ialibu Hos.										Road/Trek
		Yana	100	0	Ialibu Hos.										Road/Trek
14	MAKURA 2		277	0											
		Pimata	70	0	Ialibu Hos.										Road/Trek
		Makura	77	0	Ialibu Hos.										Road/Trek
		Irawe	53	0	Ialibu Hos.										Road/Trek
		Waisa	10	0	Ialibu Hos.										Road/Trek
		Nekea	53	0	Ialibu Hos.										Road/Trek
		Rimbuada	13	0	Ialibu Hos.										Road/Trek
15	KIRENE		1,077	0											
		Kirene	132	0	Ialibu Hos.										Road/Trek
		Pongoma	191	0	Ialibu Hos.										Road/Trek
		Aneda	180	0	Ialibu Hos.										Road/Trek
		Loiremapu	76	0	Ialibu Hos.										Road/Trek
		Maia	165	0	Ialibu Hos.										Road/Trek
		Kolora	102	0	Ialibu Hos.										Road/Trek
		Mala	191	0	Ialibu Hos.										Road/Trek
		Yokea	40	0	Ialibu Hos.										Road/Trek
16	KUMBAME 1		371	0											
		Yamala	72	0	Ialibu Hos.										Road/Trek
		Rakianda	64	0	Ialibu Hos.										Road/Trek
		Yamorenda	153	0	Ialibu Hos.										Road/Trek
		Rina	54	0	Ialibu Hos.										Road/Trek
		Rembare	27	0	Ialibu Hos.										Road/Trek
17	KUMBAME 2		505	0											
		Wildlife	14	0	Ialibu Hos.										Road/Trek
		Moraimi	18	0	Ialibu Hos.										Road/Trek
		Alirami	53	0	Ialibu Hos.										Road/Trek
		Aku	24	0	Ialibu Hos.										Road/Trek
		Wake	92	0	Ialibu Hos.										Road/Trek
		Opakambe	137	0	Ialibu Hos.										Road/Trek
		Pombali	166	0	Ialibu Hos.										Road/Trek
18	PONOWI 1		981	0											
		Duri	66	0	Ialibu Hos.										Road/Trek
		Nalea	148	0	Ialibu Hos.										Road/Trek
		Rombakenda	304	0	Ialibu Hos.										Road/Trek
		Yowe	464	0	Ialibu Hos.										Road/Trek
19	PONOWI 2		106	0											
		Ruli	9	0	Ialibu Hos.										Road/Trek
		Kea	63	0	Ialibu Hos.										Road/Trek
		Mugusa	33	0	Ialibu Hos.										Road/Trek
20	MUNGUMAPU		801	0											
		Rianda	266	0	Ialibu Hos.										Road/Trek
		Salikari	198	0	Ialibu Hos.										Road/Trek
		Ponowili	41	0	Ialibu Hos.										Road/Trek
		Pare	61	0	Ialibu Hos.										Road/Trek
		Kutu	50	0	Ialibu Hos.										Road/Trek
		Yarepe	185	0	Ialibu Hos.										Road/Trek
			0	0											
WIRU RURAL			20,342	29,862		26,574	5,430	14,020		141	141	79	2,160	141	
1	POLOKO 2		369	432		426	99	220		2	2	2	0		
		Kulipini	276	277	Pangia HC2	201	50	103	12.04.22	1	1	1	0	Radio Light	Road
		Waleapini	93	155	Pangia HC2	225	49	117	12.04.22	1	1	1	0	Radio Light	Road
2	POLOKO 1		355	569		503	105	278		4	4	4	55		
		Poloko	78	97	Pangia HC2	122	26	65	12.04.22	1	1	1	0	Radio Light	Road
		Andau	56	38	Pangia HC2	134	26	71	12.04.22	1	1	1	24	Radio Light	Road
		Tiawe	79	151	Pangia HC2	121	25	71	12.04.22	1	1	1	10	Radio Light	Road
		Pondia	142	283	Pangia HC2	126	28	71	12.04.22	1	1	1	21	Radio Light	Road
3	BOLONA		403	548		523	140	304		4	4	4	4		
		Bolona	111	123	Pangia HC2	126	33	75	13.04.22	1	1	1	0	Radio Light	Road
		Layowane	140	272	Pangia HC2	170	40	96	13.04.22	1	1	1	0	Radio Light	Road
		Yomba	59	95	Pangia HC2	52	18	34	13.04.22	1	1	1	4	Radio Light	Road
		Magapiko	92	59	Pangia HC2	175	49	99	13.04.22	1	1	1	0	Radio Light	Road
4	KOYAPU		823	1,706		1,220	247	630		7	7	7	167		
		Koyapu	136	483	Pangia HC2	234	59	124	11.04.22	1	1	1	46	Radio Light	Road
		Tipuai	96	99	Pangia HC2	108	24	58	10.04.22	1	1	1	9	Radio Light	Road
		Kapele	274	541	Pangia HC2	398	85	214	10.04.22	1	1	1	34	Radio Light	Road
		Kegerene	103	264	Pangia HC2	155	27	76	11.04.22	1	1	1	28	Radio Light	Road
		Moroa	100	133	Pangia HC2	141	22	67	11.04.22	1	1	1	21	Radio Light	Road
		Lunupini	92	129	Pangia HC2	93	17	47	11.04.22	1	1	1	17	Radio Light	Road
		Tipa	22	56	Pangia HC2	91	13	44	11.04.22	1	1	1	12	Radio Light	Road
5	POLEYO		574	1,313		839	204	443		7	7	7	8		
		Kelepini	92	143	Pangia HC2	84	21	40	11.04.22	1	1	1	0	Radio Light	Road
		Aliango	46	116	Pangia HC2	40	9	23	11.04.22	1	1	1	0	Radio Light	Road
		Kandai 1	191	169	Pangia HC2	128	33	69	11.04.22	1	1	1	0	Radio Light	Road
		Pokerene	52	193	Pangia HC2	64	17	36	11.04.22	1	1	1	0	Radio Light	Road
		Kandai 2	126	200	Pangia HC2	57	15	32	11.04.22	1	1	1	0	Radio Light	Road
		Oai	67	188	Pangia HC2	80	19	39	12.04.22	1	1	1	0	Radio Light	Road
		Kawema/Yakia		304	Pangia HC2	386	90	204	11.04.22	1	1	1	8	Radio Light	Road

LLG	WARD	VILLAGE	Estimated 2022 Population Based On 2000 Census	Estimated 2022 Population Based On 2019 Survey	Health Centre	Population Surveyed	House Holds Surveyed	Nets Issued	Date Of Distribution	Villages	Digicel	Bmobile	Houses With Radios	Radio Networks	Comments
6	IARO 1		469	836		1,228	231	632		4	4	4	17		
		Iaro	96	172	Pangia HC2	284	50	147	08.04.22	1	1	1	0	Radio Light	Road
		Iaro Tumu Pri School		NEW	Pangia HC2	215	50	114	08.04.22	1	1	1	3	Radio Light	Road
		Tokopini	206	366	Pangia HC2	390	81	210	08.04.22	1	1	1	14	Radio Light	Road
		Paria	168	297	Pangia HC2	339	50	161	11.04.22	1	1	1	0	Radio Light	Road
7	IARO 2		550	926		1,482	312	775		5	5	5	6		
		Tindua	89	195	Pangia HC2	246	50	138	08.04.22	1	1	1	0	Radio Light	Road
		Korau	63	186	Pangia HC2	367	80	177	08.04.22	1	1	1	0	Radio Light	Road
		Yamboai	121	231	Pangia HC2	394	82	201	08.04.22	1	1	1	6	Radio Light	Road
		Lende	223	207	Pangia HC2	255	50	139	08.04.22	1	1	1	0	Radio Light	Road
		Wangeneyapu	53	108	Pangia HC2	220	50	120	09.04.22	1	1	1	0	Radio Light	Road
8	KALANE		743	1,207		1,014	222	552		5	5	5	0		
		Kalane	231	338	Pangia HC2	222	50	113	08.04.22	1	1	1	0	Radio Light	Road
		Aleyoro	146	119	Pangia HC2	71	14	40	08.04.22	1	1	1	0	Radio Light	Road
		Toluka	73	327	Pangia HC2	329	71	175	08.04.22	1	1	1	0	Radio Light	Road
		Yopalu	99	202	Pangia HC2	178	38	98	08.04.22	1	1	1	0	Radio Light	Road
		Tolea	193	220	Pangia HC2	214	49	126	08.04.22	1	1	1	0	Radio Light	Road
9	KALUWE 1		351	637		474	112	264		3	3	3	112		
		Upine	109	265	Pangia HC2	178	43	102	12.04.22	1	1	1	43	Radio Light	Road
		Kalawane	50	199	Pangia HC2	73	19	43	12.04.22	1	1	1	19	Radio Light	Road
		Melike	192	172	Pangia HC2	223	50	119	12.04.22	1	1	1	50	Radio Light	Road
10	KALUWE 2		394	737		772	170	415		4	4	4	2		
		Kaluwe Tumu	110	115	Pangia HC2	271	50	143	12.04.22	1	1	1	1	Radio Light	Road
		Mengalopini	106	258	Pangia HC2	228	50	120	12.04.22	1	1	1	1	Radio Light	Road
		Napini	71	137	Pangia HC2	129	29	71	12.04.22	1	1	1	0	Radio Light	Road
		Kaluwe 2	107	228	Pangia HC2	144	41	81	12.04.22	1	1	1	0	Radio Light	Road
11	WERIKO		689	771		407	77	217		4	4	4	10		
		Weriko	72	126	Pangia HC2	38	10	22	08.04.22	1	1	1	0	Radio Light	Road
		Pinpono	185	325	Pangia HC2	109	21	56	08.04.22	1	1	1	7	Radio Light	Road
		Taiyoro	49	115	Pangia HC2	28	4	14	08.04.22	1	1	1	0	Radio Light	Road
		Kalipoi	384	205	Pangia HC2	232	42	125	08.04.22	1	1	1	3	Radio Light	Road
12	MAUPINI		365	719		562	108	313		4	4	0	102		
		Maupini	189	227	Williamma SHC	265	50	144	06.04.22	1	1	0	45	Radio Light	Road
		Tangokene	54	144	Williamma SHC	108	21	62	06.04.22	1	1	0	21	Radio Light	Road
		Lumbene	121	239	Williamma SHC	119	23	69	06.04.22	1	1	0	23	Radio Light	Road
		Tangupane		109	Williamma SHC	70	14	38	06.04.22	1	1	0	13	Radio Light	Road
13	KERAPALI		759	1,365		1,281	233	657		11	11	0	108		
		Kerapali	23	195	Williamma SHC	87	14	45	06.04.22	1	1	0	14	Radio Light	Road
		Kulipini	117	290	Williamma SHC	220	50	114	06.04.22	1	1	0	0	Radio Light	Road
		Kamborini	36	43	Williamma SHC	179	30	93	06.04.22	1	1	0	2	Radio Light	Road
		Yalepini	51	73	Williamma SHC	62	12	30	06.04.22	1	1	0	10	Radio Light	Road
		Kumopini	86	262	Williamma SHC	81	18	44	06.04.22	1	1	0	15	Radio Light	Road
		Parupini	42	56	Williamma SHC	52	11	27	06.04.22	1	1	0	9	Radio Light	Road
		Kundu	78	130	Williamma SHC	129	20	67	06.04.22	1	1	0	24	Radio Light	Road
		Kaloi	31	33	Williamma SHC	40	12	23	06.04.22	1	1	0	2	Radio Light	Road
		Wairapini	121	93	Williamma SHC	197	30	97	06.04.22	1	1	0	13	Radio Light	Road
		Tarini	109	146	Williamma SHC	144	23	72	06.04.22	1	1	0	14	Radio Light	Road
		Awayoro	66	44	Williamma SHC	90	13	45	06.04.22	1	1	0	5	Radio Light	Road
14	TUNDA		844	1,141		1,066	203	560		9	9	0	143		
		Tunda	199	268	Williamma SHC	250	50	130	05.04.22	1	1	0	48	Radio Light	Road
		Windi	113	181	Williamma SHC	185	29	98	05.04.22	1	1	0	27	Radio Light	Road
		Mondayawane	91	123	Williamma SHC	78	15	39	05.04.22	1	1	0	13	Radio Light	Road
		Andua	120	101	Williamma SHC	105	17	55	05.04.22	1	1	0	4	Radio Light	Road
		Makuluyondo	103	142	Williamma SHC	128	30	64	05.04.22	1	1	0	11	NBC	Road
		Kaleyapu	26	56	Williamma SHC	76	17	42	05.04.22	1	1	0	10	Radio Light	Road
		Loroa	62	75	Williamma SHC	29	6	17	05.04.22	1	1	0	7	Radio Light	Road
		Kalaiyawane	66	135	Williamma SHC	65	13	37	05.04.22	1	1	0	10	Radio Light	Road
		Kauwepini	63	61	Williamma SHC	150	26	78	05.04.22	1	1	0	13	NBC	Road
15	TEMBIKENE 1		1,015	1,706		1,239	237	648		8	8	3	0		
		Yala	67	187	Williamma SHC	112	26	57	06.04.22	1	1	0		Radio Light	Road
		Leripini	170	265	Williamma SHC	195	36	102	06.04.22	1	1	0		Radio Light	Road
		Pawai	112	184	Williamma SHC	153	28	76	06.04.22	1	1	0		Radio Light	Road
		Panguai	67	178	Williamma SHC	118	24	61	06.04.22	1	1	0		Radio Light	Road
		Mamuane	226	324	Williamma SHC	291	60	157	06.04.22	1	1	0		Radio Light	Road
		Wapere	175	237	Williamma SHC	149	28	79	06.04.22	1	1	1		Radio Light	Road
		Polu	117	163	Williamma SHC	122	16	64	06.04.22	1	1	1		NBC	Road
		Tewia	82	169	Williamma SHC	99	19	52	06.04.22	1	1	1		NBC	Road
16	TEMBIKENE 2		477	646		467	106	257		4	4	0	72		
		Tembikene	162	184	Williamma SHC	141	33	74	06.04.22	1	1	0	28	Radio Light	Road
		Waleapini	74	92	Williamma SHC	73	18	42	06.04.22	1	1	0	6	Radio Light	Road
		Tawale	136	235	Williamma SHC	144	27	77	06.04.22	1	1	0	18	Radio Light	Road
		Koluka	105	135	Williamma SHC	109	28	64	06.04.22	1	1	0	20	Radio Light	Road
17	PUPI		576	1,111		726	130	385		5	5	5	101		
		Pupi	47	153	Williamma SHC	127	20	68	05.04.22	1	1	1	14	Radio Light	Road
		Paiyama	80	207	Williamma SHC	97	16	53	05.04.22	1	1	1	13	Radio Light	Road
		Kimbiyapu	120	269	Williamma SHC	157	29	81	05.04.22	1	1	1	25	Radio Light	Road
		Kundu	213	297	Williamma SHC	205	41	107	05.04.22	1	1	1	33	Radio Light	Road
		Karapini	116	186	Williamma SHC	140	24	76	05.04.22	1	1	1	16	Radio Light	Road
18	LAWE		556	695		680	127	367		4	4	0	100		
		Lawe	198	342	Williamma SHC	289	57	161	05.04.22	1	1	0	42	NBC	Road
		Wembu	133	172	Williamma SHC	209	36	111	05.04.22	1	1	0	35	Radio Light	Road
		Nopialipiko	112	46	Williamma SHC	31	5	18	05.04.22	1	1	0	5	Radio Light	Road
		Pawaii	112	135	Williamma SHC	151	29	77	05.04.22	1	1	0	18	Radio Light	Road
19	TIMBARI 1		687	1,107		1,055	250	541		4	4	0	202		
		Timbari	203	454	Williamma SHC	376	100	195	05.04.22	1	1	0	66	Radio Light	Road
		Taly	111	181	Williamma SHC	229	50	119	05.04.22	1	1	0	40	Radio Light	Road

LLG	WARD	VILLAGE	Estimated 2022 Population Based On 2000 Census	Estimated 2022 Population Based On 2019 Survey	Health Centre	Population Surveyed	House Holds Surveyed	Nets Issued	Date Of Distribution	Villages	Digicel	Bmobile	Houses With Radios	Radio Networks	Comments
		Kapiapini	255	281	Williamma SHC	233	50	123	04.04.22	1	1	0	50	Radio Light	Road
		Kanduwai	118	190	Williamma SHC	217	50	104	04.04.22	1	1	0	46	Radio Light	Road
20	TIMBARI 2		310	490		504	116	274		3	3	0	112		
		Poluane	41	136	Williamma SHC	205	50	111	07.04.22	1	1	0	49	Radio Light	Road
		William	136	247	Williamma SHC	225	50	126	07.04.22	1	1	0	47	Radio Light	Road
		William Community Sch	133	107	Williamma SHC	74	16	37	06.04.22	1	1	0	16	Radio Light	Road
21	WANU		742	1,569		1,807	350	962		4	4	4	153		
		Walla	147	239	Williamma SHC	242	50	126	05.04.22	1	1	1	0	Radio Light	Road
		Belipini	118	437	Williamma SHC	544	100	302	05.04.22	1	1	1	49	Radio Light	Road
		Wanu	277	416	Williamma SHC	457	100	237	08.04.22	1	1	1	72	Radio Light	Road
		Yoli School	200	478	Williamma SHC	564	100	297	06.04.22	1	1	1	32	Radio Light	Road
22	MARAPINI		1,290	1,487		1,382	269	739		5	5	0	211		
		Marapini	509	730	Williamma SHC	527	100	276	07.04.22	1	1	0	92	Radio Light	Trek
		Yomopini	115	43	Williamma SHC	232	50	130	07.04.22	1	1	0	49	NBC	Trek
		Karape	212	242	Williamma SHC	244	43	125	07.04.22	1	1	0	32	Radio Light	Trek
		Turumini	96	138	Williamma SHC	103	22	59	07.04.22	1	1	0	12	Radio Light	Trek
		Wire	358	334	Williamma SHC	276	54	149	07.04.22	1	1	0	26	Radio Light	Trek
23	UNDIYAPU		1,190	2,543		1,952	379	1,021		5	5	1	0		
		Maupini	215	557	Williamma SHC	332	58	169	05.04.22	1	1	0		Radio Light	Trek
		Undiyapu	397	553	Williamma SHC	519	100	253	05.04.22	1	1	0		Radio Light	Trek
		Kalayapu	186	478	Williamma SHC	335	75	173	07.04.22	1	1	0		NBC	Trek
		Koyawane	241	523	Williamma SHC	289	46	148	07.04.22	1	1	1		Radio Light	Trek
		Ambu	151	432	Williamma SHC	477	100	278	07.04.22	1	1	0		NBC	Trek
24	YAKILIYAPU		640	880		688	99	346		3	3	3	96		
		Yakiliyapu	475	301	Williamma SHC	92	14	44	05.04.22	1	1	1	13	Radio Light	Trek
		Paliyateke	80	271	Williamma SHC	296	35	149	05.04.22	1	1	1	35	Radio Light	Trek
		Endei	86	308	Williamma SHC	300	50	153	04.04.22	1	1	1	48	Radio Light	Trek
25	YOKA		1,079	1,152		1,504	307	764		6	6	0	193		
		Yoka	908	346	Williamma SHC	433	96	211	05.04.22	1	1	0	75	NBC	Trek
		Uro	170	255	Williamma SHC	333	50	168	05.04.22	1	1	0	31	Radio Light	Trek
		Koya		209	Williamma SHC	225	49	115	05.04.22	1	1	0	14	NBC	Trek
		Urapiko		55	Williamma SHC	230	50	123	05.04.22	1	1	0	30	NBC	Trek
		Makura		61	Williamma SHC	241	50	124	05.04.22	1	1	0	35	Radio Light	Trek
		Lengereka		226	Williamma SHC	42	12	23	05.04.22	1	1	0	8	NBC	Trek
26	KUAPINI		962	939		582	102	308		3	3	0	70		
		Kuabini	345	265	Williamma SHC	178	31	92	05.04.22	1	1	0	23	Radio Light	Trek
		Pulungai	69	216	Williamma SHC	139	24	77	05.04.22	1	1	0	18	Radio Light	Trek
		Laiyapu	548	458	Williamma SHC	265	47	139	05.04.22	1	1	0	29	Radio Light	Trek
27	NOIYA		1,468	1,445		1,160	267	604		6	6	6	113		
		Noiya	388	297	Pangia HC2	233	50	120	11.04.22	1	1	1	2	Radio Light	Road
		Pokopiko	357	322	Pangia HC2	268	61	151	11.04.22	1	1	1	11	Radio Light	Road
		Wire	61	19	Pangia HC2	202	43	103	11.04.22	1	1	1	8	Radio Light	Road
		Kerapali	113	293	Pangia HC2	130	28	62	11.04.22	1	1	1	18	Radio Light	Road
		Taikopini	314	293	Pangia HC2	172	36	93	10.04.22	1	1	1	28	Radio Light	Road
		Yambipini	235	221	Pangia HC2	155	49	75	10.04.22	1	1	1	46	Radio Light	Road
28	TAGURU		1,663	1,186		1,031	228	544		8	8	8	3		
		Ponakene	219	265	Pangia HC2	198	46	113	09.04.22	1	1	1	0	Radio Light	Road
		Polukepo	155	115	Pangia HC2	49	11	23	09.04.22	1	1	1	0	Radio Light	Road
		Kalawai	155	148	Pangia HC2	156	41	86	09.04.22	1	1	1	1	Radio Light	Road
		Epapini	464	269	Pangia HC2	192	45	104	09.04.22	1	1	1	0	Radio Light	Road
		Lombai	334	116	Pangia HC2	100	30	55	09.04.22	1	1	1	0	Radio Light	Road
		Kaupini	157	127	Pangia HC2	108	26	52	09.04.22	1	1	1	0	Radio Light	Road
		Niripu	108	93	Pangia HC2	173	19	85	09.04.22	1	1	1	2	Radio Light	Road
		Taguru Community Sch	73	53	Pangia HC2	55	10	26	10.04.22	1	1	1	0	Radio Light	Road

ANNEX TWO

SOUTHERN HIGHLANDS PROVINCE
KAGUA ERAVE DISTRICT POPULATION 2022
LLIN DISTRIBUTION SUMMARY SHEET

VILLAGE CODING

Areas Above 2000m
Areas Between 1600m To 2000m
Areas Between 1200m to 1600m
Areas Below 1200m

LLG	WARD	VILLAGE	Estimated 2022 Population Based On 2000 Census	Estimated 2022 Population Based On 2019 Survey	Health Centre	Population Surveyed	House Holds Surveyed	Nets Issued	Date Of Distribution	Villages	Digicel	Bmobile	Houses With Radios	Radio Networks	Comments
KAGUA \ ERAVE			111,991	111,991		31,577	5,632	15,994		129	109	0	98	13	
ERAVE RURAL			23,779	20,803		14,053	2,554	7,145		80	60	0	76	13	
1	GALU		768	873		718	134	363		3	3	0	16		
		Galu	407	469	Erave HC	339	60	170	11.04.22	1	1	0	15		Road
		Pepeawere	265	243	Erave HC	273	48	140	11.04.22	1	1	0	0		Road
		Palonda	97	161	Erave HC	106	26	53	11.04.22	1	1	0	1	NBC	Road
2	TIRIPI		1,066	1,197		809	159	414		3	3	0	2		
		Tiripi	341	453	Erave HC	239	50	122	11.04.22	1	1	0	1		Road
		Kalolo	485	494	Erave HC	434	84	223	11.04.22	1	1	0	0		Road
		Wapurupi	240	250	Erave HC	136	25	69	11.04.22	1	1	0	1		Road
3	BATRI 1		1,233	958		784	151	404		9	8	0	9		
		Wamulu	388	164	Erave HC	170	29	86	10.04.22	1	1	0	9	FM & NBC	Road
		Mugoloma	242	178	Erave HC	136	26	70	10.04.22	1	1	0	0		Road
		Pandore	148	40	Erave HC	33	8	18	10.04.22	1	1	0	0	FM & NBC	Road
		Kaliaga	205	60	Erave HC	52	11	28	10.04.22	1	0	0	0		Road
		Rumilisi	90	48	Erave HC	67	13	36	10.04.22	1	1	0	0	FM & NBC	Road
		Purumi	111	214	Erave HC	190	35	97	10.04.22	1	1	0	0		Road
		Batri Community School	47	67	Erave HC	47	12	22	10.04.22	1	1	0	0		Road
		Bala	84	84	Erave HC	29	4	15	10.04.22	1	1	0	0		Road
		Kata		104	Erave HC	60	13	32	10.04.22	1	1	0	0	NBC	Road
4	BATRI 2		1,270	1,045		933	179	487		9	9	0	1		
		Topere	134	99	Erave HC	84	16	44	10.04.22	1	1	0	1	NBC	Road
		Hagupa	66	49	Erave HC	71	15	37	10.04.22	1	1	0	0		Road
		Mapire	103	85	Erave HC	60	15	32	10.04.22	1	1	0	0	NBC	Road
		Kamapua	129	138	Erave HC	126	22	65	10.04.22	1	1	0	0		Road
		Walu	357	158	Erave HC	248	46	128	10.04.22	1	1	0	0		Road
		Warumare	131	133	Erave HC	107	19	56	10.04.22	1	1	0	0		Road
		Mondame	107	104	Erave HC	82	13	41	10.04.22	1	1	0	0	NBC	Road
		Waleare	242	139	Erave HC	111	25	60	10.04.22	1	1	0	0	NBC	Road
		Pati		139	Erave HC	44	8	24	10.04.22	1	1	0	0		Road
5	IAMURUPI		916	627		617	135	315		4	4	0	0		
		Iamurupi	92	44	Erave HC	52	13	26	11.04.22	1	1	0	0		Road/1-3 Hr Trek
		Monde	205	116	Erave HC	177	36	94	10.04.22	1	1	0	0		Road/1-3 Hr Trek
		Waloa	349	179	Erave HC	228	47	114	09.04.22	1	1	0	0		Road/1-3 Hr Trek
		Popali	51	111	Erave HC										
		Urupi	218	177	Erave HC	160	39	81	09.04.22	1	1	0	0		Road/1-3 Hr Trek
6	ERAVE STATION		2,664	1,757		1,684	328	847		13	12	0	7		
		Kini	84	75	Erave HC	63	15	35	12.04.22	1	1	0	0		Road
		Kopanda	166	125	Erave HC	81	20	40	12.04.22	1	1	0	0		Road
		Pandapi	154	119	Erave HC	118	20	59	12.04.22	1	1	0	0		Road
		Kopi Tri	164	127	Erave HC	135	23	68	12.04.22	1	1	0	6		Road
		Meneyawe	160	129	Erave HC	102	19	51	12.04.22	1	1	0	0	NBC	Road
		Yalapala	567	360	Erave HC	330	67	165	12.04.22	1	1	0	0		Road
		Kawaso	341	118	Erave HC	181	41	91	12.04.22	1	1	0	1		Road
		Teleporai	232	149	Erave HC	130	28	65	12.04.22	1	1	0	0		Road
		Ecp Mission Station	154	95	Erave HC	110	15	55	12.04.22	1	1	0	0		Road
		Health Centre	64	75	Erave HC	90	16	45	12.04.22	1	1	0	0	NBC	Road
		Primary School	119	107	Erave HC	151	26	76	12.04.22	1	1	0	0		Road
		Virolo		48	Erave HC	39	9	20	12.04.22	1	0	0	0		Road
		Erave Station	458	228	Erave HC	154	29	77	12.04.22	1	1	0	0		Road
7	KOIARI		524	578		458	102	229		4	4	0	3		
		Koiari	314	260	Erave HC	226	48	113	12.04.22	1	1	0	0	NBC	Road
		Kasio	148	106	Erave HC	104	25	52	12.04.22	1	1	0	2		Road
		Koiari Cath. Mission	58	117	Erave HC	86	19	43	12.04.22	1	1	0	1		Road
		Erave High School	4	95	Erave HC	42	10	21	12.04.22	1	1	0	0		Road
8	TIAPILI		789	667		611	119	315		4	4	0	0		
		Tiapili	411	300	Erave HC	286	60	146	12.04.22	1	1	0	0		Road
		Sumami		31	Erave HC	34	7	17	12.04.22	1	1	0	0		Road
		Walu	267	241	Erave HC	165	26	89	12.04.22	1	1	0	0		Road
		Kiri	74	91	Erave HC	126	26	63	12.04.22	1	1	0	0		Road
		Kambaleme	37	4	Erave HC										Hamlet from Kiri
9	KERABI		793	555											
		Kerabi	119	61	Tiri SHC										2-3 Hr Trek
		Yakopaita	115	41	Tiri SHC										Trek
		Kapolopou	201	88	Tiri SHC										Trek
		Kugu	162	122	Tiri SHC										Trek
		Gawe	92	53	Tiri SHC										Trek
		New Camp	103	190	Tiri SHC										Trek
10	BALOWEI		216	161											
		Balawei	216	161	Tiri SHC										2-3 Hr Trek
11	TIRI		820	489											
		Tiri	99	74	Tiri SHC										Trek
		Mokula	173	116	Tiri SHC										Trek
		Takepou	431	211	Tiri SHC										Trek
		Pate	117	87	Tiri SHC										Trek
12	WARAGA		575	419											
		Waraga	183	52	Tiri SHC										Trek
		Pirareke	150	128	Tiri SHC										Trek
		Doulo	242	239	Tiri SHC										Trek
13	WAPOSALE		908	882											

LLG	WARD	VILLAGE	Estimated 2022 Population Based On 2000 Census	Estimated 2022 Population Based On 2019 Survey	Health Centre	Population Surveyed	House Holds Surveyed	Nets Issued	Date Of Distribution	Villages	Digicel	Bmobile	Houses With Radios	Radio Networks	Comments
		Kepa	316	326	Waposale SHC										Trek
		Waposale	236	275	Waposale SHC										Trek
		Tigiri	220	177	Waposale SHC										Trek
		Wetali	136	104	Waposale SHC										Trek
14	KELE		355	430											
		Kele	199	127	Waposale SHC										Trek
		Soani	66	136	Waposale SHC										Trek
		Sesai	90	167	Waposale SHC										Trek
15	PUPUTAU		1,052	1,182											
		Bolo	173	221	Mt Tauwa										Trek
		Puputau	879	931	Mt Tauwa										Trek
		Wapas/Sowebalota		30	Mt Tauwa										Trek
16	SIRIGI		466	264											
		Biage	189	113	Mt Tauwa										Trek
		Sirigi	277	151	Mt Tauwa										Trek
17	SOPISA		522	451											
		Sopisa	216	75	Sopisa										Trek
		Waletao	158	155	Sopisa										Trek
		Ubuatao	148	98	Sopisa										Trek
		Sime		123	Sopisa										Trek
		Negebare (GULF)		484											
		Negebare		156	Mt Tauwa										Trek
		Negebare		101	Sopisa										
		Tekerapo		46	Sopisa										
		Tetrebare		181	Sopisa										
		Tobare (GULF)		205											
		Tobare		205	Sopisa										
18	MENEKIRI		569	392		351	70	183		3	3	0	0		
		Menekiri	129	104	Erave HC	151	33	80	12.04.22	1	1	0	0		Trek
		Kakepoiya	327	221	Erave HC	79	18	43	12.04.22	1	1	0	0		Trek
		Anga Kalu	113	67	Erave HC	121	19	60	12.04.22	1	1	0	0		Trek
19	MAROROGO		220	230		249	47	125		2	2	0	3		
		Marorogo	162	165	Erave HC	197	39	99	12.04.22	1	1	0	3		Trek
		Bagarawia	58	65	Erave HC	52	8	26	12.04.22	1	1	0	0		Trek
20	WARO		1,017	818		803	116	416		3	3	0	0		
		Waro	290	408	Erave HC	212	37	111	12.04.22	1	1	0	0		Trek
		Yaporolo	171	138	Erave HC	174	29	92	12.04.22	1	1	0	0		Trek
		Kegelipi	557	272	Erave HC	417	50	213	11.04.22	1	1	0	0		Trek
21	YANGULI 1		1,037	872		832	139	416		3	3	0	24		
		Besapulu	466	390	Erave HC	289	45	145	11.04.22	1	1	0	0		Trek
		Touareke	409	259	Erave HC	243	44	121	11.04.22	1	1	0	0		Trek
		Mugukere	162	223	Erave HC	300	50	150	11.04.22	1	1	0	24		Trek
22	YANGULI 2		822	454		535	71	269		2	2	0	11		
		Koyari	505	222	Erave HC	282	38	141	11.04.22	1	1	0	0		Trek
		Karimapu	316	232	Erave HC	253	33	128	11.04.22	1	1	0	11	FM & NBC	Trek
23	PAWABI 1		588	583		660	113	349		2	0	0	0		
		Pawabi	588	583	Samberigi SHC	555	93	294	10.04.22	1	0	0	0		Trek
		Tone		NEW	Samberigi SHC	105	20	55	11.04.22	1	0	0	0		
24	PAWABI 2		721	650		680	103	330		3	0	0	0		
		Pandapi	152	207	Samberigi SHC	184	28	100	10.04.22	1	0	0	0		Trek
		Hoki	234	179	Samberigi SHC	222	31	109	09.04.22	1	0	0	0		Trek
		Hawere	335	264	Samberigi SHC	274	44	121	11.04.22	1	0	0	0		Trek
25	SAO		1,224	1,166		1,014	193	569		5	0	0	0		
		Sao	304	303	Samberigi SHC	225	45	122	10.04.22	1	0	0	0		Trek
		Bisipale	244	237	Samberigi SHC	218	31	108	10.04.22	1	0	0	0		Trek
		Dakiri	462	436	Samberigi SHC	261	50	141	10.04.22	1	0	0	0		Trek
		Sembirigi	214	191	Samberigi SHC	203	32	110	13.04.22	1	0	0	0		Trek
		Construction Camp		NEW	Samberigi SHC	107	35	88	11.04.22	1	0	0	0		
26	KATI		1,200	960		915	174	449		5	0	0	0		
		Kati	214	109	Samberigi SHC	161	31	83	09.04.22	1	0	0	0		Trek
		Pimale	199	154	Samberigi SHC	155	34	86	10.04.22	1	0	0	0		Trek
		Pukuapeke	244	192	Samberigi SHC	159	38	79	09.04.22	1	0	0	0		Trek
		Noseala	70	103	Samberigi SHC										Abandoned
		Kirawei	199	138	Samberigi SHC	129	21	62	11.04.22	1	0	0	0		Trek
		Masiki	273	263	Samberigi SHC	311	50	139	11.04.22	1	0	0	0		Trek
27	PAWALE		951	826		895	138	413		2	0	0	0		
		Pawale	647	654	Samberigi SHC	682	100	306	09.04.22	1	0	0	0		Trek
		Pandeala	304	171	Samberigi SHC	213	38	107	09.04.22	1	0	0	0		Trek
28	NIAE		493	628		505	83	252		1	0	0	0		
		Somere	493	628	Samberigi SHC	505	83	252	09.04.22	1	0	0	0		Trek
				0											
KAGUA RURAL			72,906	77,559		17524	3078	8849		49	49	0	22	0	
1	ALOPEA		2,159	1,658		1179	212	606		4	4	0	0		
		Alopea	173	374	Kagua HC	218	58	118	12.04.22	1	1	0	0		Road/Trek
		Puli	735	300	Kagua HC	346	75	176	12.04.22	1	1	0	0		Road/Trek
		Wapi	924	810	Kagua HC	440	49	221	11.04.22	1	1	0	0		Road/Trek
		Pomboroi	327	175	Kagua HC	175	30	91	12.04.22	1	1	0	0		Road/Trek
2	APOMA		1,917	1,844		1444	224	726		5	5	0	9		
		Apoma	481	641	Kagua HC	407	71	205	06.04.22	1	1	0	0		2-3 Hr Trek
		Sugiri	733	273	Kagua HC	210	31	106	06.04.22	1	1	0	0		2-3 Hr Trek
		Ronga	390	296	Kagua HC	181	31	94	06.04.22	1	1	0	0		2-3 Hr Trek
		Epa	166	394	Kagua HC	410	59	205	06.04.22	1	1	0	1		2-3 Hr Trek
		Rakere	146	240	Kagua HC	236	32	116	06.04.22	1	1	0	8		2-3 Hr Trek
3	KAGUA STATION		1,387	1,654											
		Kagua Station	887		Kagua HC										Road
		Karia Cath.mssn	166		Kagua HC										Road
		Kagua High School	333		Kagua HC										Road

LLG	WARD	VILLAGE	Estimated 2022 Population Based On 2000 Census	Estimated 2022 Population Based On 2019 Survey	Health Centre	Population Surveyed	House Holds Surveyed	Nets Issued	Date Of Distribution	Villages	Digicel	Bmobile	Houses With Radios	Radio Networks	Comments
4	ALAIYA		1,138	775											
		Alaiya	310		Kagua HC										Road
		Ambare	380		Kagua HC										Road
		Utu	171		Kagua HC										Road
		Yamane	277		Kagua HC										Road
5	KATILOMA		1,779	890		861	144	434		2	2	0	0		
		Katiloma	924	584	Kagua HC	535	94	264	07.04.22	1	1	0	0		Road
		Sakimapi	855	306	Kagua HC	326	50	170	07.04.22	1	1	0	0		Road
6	KIRA		1,678	2,501											
		Kira	647		Kagua HC										Road/3 Hr Trek
		Suiyapu	329		Kagua HC										Road/Trek
		Aliyari	401		Kagua HC										Road/Trek
		Nekealoma	154		Kagua HC										Road/Trek
		Rakere	148		Kagua HC										Road/Trek
7	KOALILOMBO		2,379	2,170											
		Koali	661		Kagua HC										Road
		Lombo	1,481		Kagua HC										Road
		Mololoma	236		Kagua HC										Road
8	ANDARI		345	213											Road
		Andari	345		Kagua HC										Road
9	MAPUANDA		2,024	2,439											
		Karia Cath.mssn	692		Kagua HC										Road
		Kapola	146		Kagua HC										Road
		Yalokoma	123		Kagua HC										Road
		Kotali	337		Kagua HC										Road
		Rimali	318		Kagua HC										Road
		Yalumita	267		Kagua HC										Road
		Nika	140		Kagua HC										Road
		Mapuanda			Kagua HC										Road
10	MARILI		1,477	922											
		Kala	421		Kagua HC										Road
		Marili	526		Kagua HC										Road
		Muru	530		Kagua HC										Road
11	MENDO		1,159	1,599											
		Puti	281		Kagua HC										2-3 Hr Trek
		Mendo 2/Opa	302		Kagua HC										2-3 Hr Trek
		Yarena	64		Kagua HC										2-3 Hr Trek
		Kolora	355		Kagua HC										2-3 Hr Trek
		Kaluanda	156		Kagua HC										2-3 Hr Trek
12	MUNGARO		1,405	2,005											
		Kaware	191		Kagua HC										1-3 Hr Trek
		Mungaro	230		Kagua HC										1-3 Hr Trek
		Kambeanga	242		Kagua HC										1-3 Hr Trek
		Mararo	407		Kagua HC										1-3 Hr Trek
		Yarena	335		Kagua HC										1-3 Hr Trek
13	PAWABI		3,012	1,665											
		Pawabi	1,027		Kagua HC										Road/1-3 Hr Trek
		Alenda	569		Kagua HC										Road/1-3 Hr Trek
		Katiloma	1,415		Kagua HC										Road/1-3 Hr Trek
14	PORANE		1,387	1,562											
		Porane	80		Kagua HC										Road/Trek
		Ambeame	409		Kagua HC										Road/Trek
		Kambeanda	542		Kagua HC										Road/Trek
		Legaita	197		Kagua HC										Road/Trek
		Popona	158		Kagua HC										Road/Trek
15	RAGU		1,231	1,198		925	147	478		3	3	0	0		
		Ragu	518		Kagua HC	353	66	195	07.04.22	1	1	0	0		3 Hr Trek
		Roaperomba	495		Kagua HC	306	49	148	07.04.22	1	1	0	0		Trek
		Yambirianda	218		Kagua HC	266	32	135	07.04.22	1	1	0	0		Trek
16	ROGOMA		1,964	1,778											
		Kumbianda	179		Kagua HC										Road
		Regare	154		Kagua HC										Road
		Yanda	604		Kagua HC										Road
		Kunu	203		Kagua HC										Road
		Rogoma	824		Kagua HC										Road
17	RONGA		1,383	1,394		1408	224	710		4	4	0	7		
		Puri	501	449	Kagua HC	527	60	260	06.04.22	1	1	0	7		Trek
		Omai	462	514	Kagua HC	492	95	244	06.04.22	1	1	0	0		Trek
		Raipala	263	210	Kagua HC	214	32	115	06.04.22	1	1	0	0		Trek
		Wata	156	221	Kagua HC	175	37	91	06.04.22	1	1	0	0		Trek
18	TUMBALERE		503	704											
		Yalumita	127		Kagua HC										Road/Trek
		Rikilimi	183		Kagua HC										Road/Trek
		Tumbalere	193		Kagua HC										Road/Trek
19	SUMBURA		1,871	1,859		1457	299	764		2	2	0	0		
		Sumbura	1,192	1,262	Kagua HC	960	214	520	05.04.22	1	1	0	0		Road
		Aka	680	597	Kagua HC	497	85	244	05.04.22	1	1	0	0		Road
20	WAGIAPANDA		1,436	946		724	139	408		2	2	0	0		
		Wagiapanda	961	560	Kagua HC	324	60	183	11.04.22	1	1	0	0		Road/1 Hr Trek
		Rombolo	475	386	Kagua HC	400	79	225	11.04.22	1	1	0	0		Road/Trek
21	TULIRE		1,401	951											
		Tulire	269		Kagua HC										Road/Trek
		Wambu	528		Kagua HC										Road/Trek
		Rembetame	604		Kagua HC										Road/Trek
22	YALU		1,385	1,142											
		Yalumita	585		Kagua HC										Road/Trek
		Maita	355		Kagua HC										Road/Trek

LLG	WARD	VILLAGE	Estimated 2022 Population Based On 2000 Census	Estimated 2022 Population Based On 2019 Survey	Health Centre	Population Surveyed	House Holds Surveyed	Nets Issued	Date Of Distribution	Villages	Digicel	Bmobile	Houses With Radios	Radio Networks	Comments
		Galu	444		Kagua HC										Road/Trek
23	YANGO		2,560	2,260		2005	349	1023		5	5	0	6		
		Karanda	450	347	Kagua HC	342	75	179	06.04.22	1	1	0	0		3 Hr Trek
		Mungiri	520	454	Kagua HC	399	84	197	05.04.22	1	1	0	0		Trek
		Yango	770	234	Kagua HC	220	37	111	06.04.22	1	1	0	0		Trek
		Yari	164	203	Kagua HC	124	25	66	06.04.22	1	1	0	0		Trek
		Mambore	655	1,020	Kagua HC	920	128	470	06.04.22	1	1	0	6		Trek
24	YAME		1,526	1,157											
		Yame	487		Kagua HC										Road/Trek
		Wanere	399		Kagua HC										Road/Trek
		Kamberemapu	257		Kagua HC										Road/Trek
		Raleloma	384		Kagua HC										Road/Trek
25	ABOBA		1,479	1,769											
		Aboba	281		Kagua HC										Road/Trek
		Wabia	183		Kagua HC										Road/Trek
		Sapare	271		Kagua HC										Road/Trek
		Napura	148		Kagua HC										Road/Trek
		Masmapi	269		Kagua HC										Road/Trek
		Mugurape	327		Kagua HC										Road/Trek
26	IBIA		2,839	2,882											
		Ibia	458		Kagua HC										Road/Trek
		Wariaputi	343		Kagua HC										Road/Trek
		Wakuma	329		Kagua HC										Road/Trek
		Maita	261		Kagua HC										Road/Trek
		Mabu	522		Kagua HC										Road/Trek
		Rakenda	347		Kagua HC										Road/Trek
		Yamerika	355		Kagua HC										Road/Trek
		Wereputi	199		Kagua HC										Road/Trek
		Ibia Community School	25		Kagua HC										Road/Trek
27	IMANE		2,880	5,605		5354	849	2549		13	13	0	0		
		Imane	185	646	Taminda HC	517	75	248	11.04.22	1	1	0	0		Trek
		Tipu/Maguta	134	147	Taminda HC	101	16	51	11.04.22	1	1	0	0		Trek
		Omborama	144	273	Taminda HC	334	50	157	11.04.22	1	1	0	0		Trek
		Awaranda	201	221	Taminda HC	335	46	151	11.04.22	1	1	0	0		Trek
		Wapi	183	143	Taminda HC	186	26	87	11.04.22	1	1	0	0		Trek
		Onasapare	205	234	Taminda HC	318	42	138	11.04.22	1	1	0	0		Trek
		Mogura	60	826	Taminda HC	473	58	226	11.04.22	1	1	0	0		Trek
		Amisa	156	338	Taminda HC	555	91	271	11.04.22	1	1	0	0		Trek
		Ripu	144	172	Taminda HC	238	33	108	11.04.22	1	1	0	0		Trek
		Kitere	727	1,261	Taminda HC	1144	225	550	11.04.22	1	1	0	0		Trek
		Uta	173	297	Taminda HC	347	47	165	11.04.22	1	1	0	0		Trek
		Paire	201	241	Taminda HC	291	49	143	11.04.22	1	1	0	0		Trek
		Yapi	368	805	Taminda HC	515	91	254	11.04.22	1	1	0	0		Trek
28	KANDOPA		1,726	3,291											
		Kandopa	709		Uma HC										Road/Trek
		Wapia	207		Uma HC										Road/Trek
		Mabipalu	171		Uma HC										Road/Trek
		Marunda	456		Uma HC										Road/Trek
		Amala	183		Uma HC										Road/Trek
		Masunda			Uma HC										Road/Trek
		Rupi			Uma HC										Road/Trek
		Endolo			Uma HC										Road/Trek
29	MAPAITA		1,841	2,708											
		Mapaita	247		Uma HC										Road/Trek
		Repenawe	357		Uma HC										Road/Trek
		Waleare	162		Uma HC										Road/Trek
		Ruri	99		Uma HC										Road/Trek
		Magianda	433		Uma HC										Road/Trek
		Walidamu	127		Uma HC										Road/Trek
		Amolopage	117		Uma HC										Road/Trek
		Umita	298		Uma HC										Road/Trek
30	PIRA		1,420	1,496											
		Pira	236		Uma HC										Road/Trek
		Kanda	195		Uma HC										Road/Trek
		Ondere	470		Uma HC										Road/Trek
		Urii	125		Uma HC										Road/Trek
		Rake	310		Uma HC										Road/Trek
		Ogeapa	82		Uma HC										Road/Trek
31	RAGUARE		1,666	3,762		2167	491	1151		9	9	0	0		
		Asumawi	228	565	Taminda HC	100	21	52	12.04.22	1	1	0	0		Trek
		Raguare	294	619	Taminda HC	377	100	212	12.04.22	1	1	0	0		Trek
		Wandere	253	522	Taminda HC	230	43	117	12.04.22	1	1	0	0		Trek
		Palure	210	440	Taminda HC	245	70	145	11.04.22	1	1	0	0		Trek
		Perenda	366	324	Taminda HC	366	100	208	11.04.22	1	1	0	0		Trek
		Ponapeanda		253	Taminda HC	206	27	78	12.04.22	1	1	0	0		Trek
		Sugu	316	583	Taminda HC	423	80	223	12.04.22	1	1	0	0		Trek
		Egeati		247	Taminda HC	52	19	28	12.04.22	1	1	0	0		Trek
		Yati		210	Taminda HC	168	31	88	12.04.22	1	1	0	0		Trek
32	TOALOMANDA		3,244	0											
		Sare	273	0	Kagua HC										Road/Trek
		Sugiri/Suki	247	0	Kagua HC										Road/Trek
		Toalomanda	427	0	Kagua HC										Road/Trek
		Yale	318	0	Kagua HC										Road/Trek
		Wapoe	269	0	Kagua HC										Road/Trek
		Sua	138	0	Kagua HC										Road/Trek
		Raku	201	0	Kagua HC										Road/Trek
		Mokayoanda	277	0	Kagua HC										Road/Trek

LLG	WARD	VILLAGE	Estimated 2022 Population Based On 2000 Census	Estimated 2022 Population Based On 2019 Survey	Health Centre	Population Surveyed	House Holds Surveyed	Nets Issued	Date Of Distribution	Villages	Digicel	Bmobile	Houses With Radios	Radio Networks	Comments
		Koia	218	0	Kagua HC										Road/Trek
		Sugi	207	0	Kagua HC										Road/Trek
		Amasa	150	0	Kagua HC										Road/Trek
		Rakere	164	0	Kagua HC										Road/Trek
		Ala	121	0	Kagua HC										Road/Trek
		Yapapia	97	0	Kagua HC										Road/Trek
		Apetare	136	0	Kagua HC										Road/Trek
33	SUMI		1,695	1,106											
		Raita	639		Kagua HC										Road/Trek
		Sumi Station	261		Kagua HC										Road/Trek
		Opo	355		Kagua HC										Road/Trek
		Andasare	193		Kagua HC										Road/Trek
		Kambua	113		Kagua HC										Road/Trek
		Sumi Station	134		Kagua HC										Road/Trek
34	UMA		2,449	2,974											
		Uma	119		Kagua HC										Road/Trek
		Apou	156		Kagua HC										Road/Trek
		Yamurupi	265		Kagua HC										Road/Trek
		Sala	175		Kagua HC										Road/Trek
		Wabu	255		Kagua HC										Road/Trek
		Rumulare	189		Kagua HC										Road/Trek
		Peagolo	70		Kagua HC										Road/Trek
		Aliyari	64		Kagua HC										Road/Trek
		Ambiti	470		Kagua HC										Road/Trek
		Marape	263		Kagua HC										Road/Trek
		Madati	181		Kagua HC										Road/Trek
		Pandua	179		Kagua HC										Road/Trek
		Malareanda	64		Kagua HC										Road/Trek
		Wabimapu			Kagua HC										Road/Trek
35	USA		1,454	1,536											
		Usa	538		Kagua HC										Road/Trek
		Yakipita	596		Kagua HC										Road/Trek
		Ragero	273		Kagua HC										Road/Trek
		Usa Community School	47		Kagua HC										Road/Trek
36	YANGURI 1		1,674	2,917											
		Yanguri	171		Kagua HC										Road/Trek
		Wakere	230		Kagua HC										Road/Trek
		Rula	166		Kagua HC										Road/Trek
		Papiri	199		Kagua HC										Road/Trek
		Kato	140		Kagua HC										Road/Trek
		Repenawe	127		Kagua HC										Road/Trek
		Popako	90		Kagua HC										Road/Trek
		Ubi	166		Kagua HC										Road/Trek
		Manga	181		Kagua HC										Road/Trek
		Popona	203		Kagua HC										Road/Trek
37	YANGURI 2		1,403	1,714											
		Are	107		Kagua HC										Road/Trek
		Lomba	212		Kagua HC										Road/Trek
		Muniputi	267		Kagua HC										Road/Trek
		Kelemapi	542		Kagua HC										Road/Trek
		Waliba	166		Kagua HC										Road/Trek
		Aiya	109		Kagua HC										Road/Trek
38	AKUNA		1,609	2,049											
		Akuna Ratah	90		Kagua HC										Road/Trek
		Yakoa	210		Kagua HC										Road/Trek
		Rulupari	117		Kagua HC										Road/Trek
		Waneyage	156		Kagua HC										Road/Trek
		Pairundu	343		Kagua HC										Road/Trek
		Marapi	134		Kagua HC										Road/Trek
		Marabe	162		Kagua HC										Road/Trek
		Apote	218		Kagua HC										Road/Trek
		Kumimi	166		Kagua HC										Road/Trek
		Yakoa Community School	12		Kagua HC										Road/Trek
39	LAGIRA - BATA		1,779	1,688											
		Bata/Yokere	368		Kagua HC										Road/Trek
		Lagira	606		Kagua HC										Road/Trek
		Ponapeanda	499		Kagua HC										Road/Trek
		Walua	306		Kagua HC										Road/Trek
40	PAWAYAMO		1,292	2,123											
		Pawayamo	462		Kagua HC										Road/Trek
		Yawi	164		Kagua HC										Road/Trek
		Imu/Ratah	179		Kagua HC										Road/Trek
		Yamah/Rakina	257		Kagua HC										Road/Trek
		Paripanda	230		Kagua HC										Road/Trek
41	PUTI		871	991											
		Puti	154		Kagua HC										Road/Trek
		Malue	306		Kagua HC										Road/Trek
		Awaroanda	101		Kagua HC										Road/Trek
		Agare	310		Kagua HC										Road/Trek
42	WASA		1,017	1,495											
		Wasa	263		Kagua HC										Road/Trek
		Puapa	131		Kagua HC										Road/Trek
		Mokayoanda	97		Kagua HC										Road/Trek
		Rakima	185		Kagua HC										Road/Trek
		Yambala	94		Kagua HC										Road/Trek
		Wabi Station	247		Kagua HC										Road/Trek
		Rakenda			Kagua HC										Road/Trek

LLG	WARD	VILLAGE	Estimated 2022 Population Based On 2000 Census	Estimated 2022 Population Based On 2019 Survey	Health Centre	Population Surveyed	House Holds Surveyed	Nets Issued	Date Of Distribution	Villages	Digicel	Bmobile	Houses With Radios	Radio Networks	Comments	
		Moka			Kagua HC											Road/Trek
43	WASUMA		1,837	2,169												
		Wasuma	1,115		Kagua HC											Road/Trek
		Yaware	378		Kagua HC											Road/Trek
		Nagaranda	343		Kagua HC											Road/Trek
		Kanga Wapunda			Kagua HC											Road/Trek
44	KENGAWE		228													
		Kengawe	228		Kagua HC											Road/Trek
KUARE RURAL			15,307	13,629		0	0	0			0	0	0	0		
1	EPAPINI		686	675												
		Epapini	269		Kuare HC											Road/Trek
		Kariapu	240	0	Kuare HC											Road/Trek
		Yango	107	0	Kuare HC											Road/Trek
		Pepere	70	0	Kuare HC											Road/Trek
2	ITA		2,136	976												
		Ita	462	0	Kuare HC											Road/Trek
		Buluanda	491		Kuare HC											Road/Trek
		Kupia	489	0	Kuare HC											Road/Trek
		Alumari	201	0	Kuare HC											Road/Trek
		Ata	201	0	Kuare HC											Road/Trek
		Kundipa	88	0	Kuare HC											Road/Trek
		Yawelea	203	0	Kuare HC											Road/Trek
		Seka Tea			Kuare HC											Road/Trek
3	KALAWIRA		596	979												
		Kalawira	175		Kuare HC											Road/Trek
		Kandeyapu	175	0	Kuare HC											Road/Trek
		Kembia	136	0	Kuare HC											Road/Trek
		Lepirini	72	0	Kuare HC											Road/Trek
		Walu	39	0	Kuare HC											Road/Trek
4	KABOREI		811	459												
		Kaborei	84		Kuare HC											Trek
		Kana	318		Kuare HC											Trek
		Tomoka	409		Kuare HC											Trek
5	KARANDA 1		740	564												
		Karanda 1	353		Kuare HC											Road/Trek
		Takunapi	296		Kuare HC											Road/Trek
		Wawai	90	0	Kuare HC											Road/Trek
6	KARANDA 2		436	408												
		Ipama (Wanore)	273		Kuare HC											Road/Trek
		Rakine (Takiare)	162		Kuare HC											Road/Trek
		Karanda 2			Kuare HC											Road/Trek
7	KARAVERE		955	886												
		Karavere (Karapere)	267		Kuare HC											Road/Trek
		Raiya (Raya)	183	0	Kuare HC											Road/Trek
		Yamorupi	60	0	Kuare HC											Road/Trek
		Kupurundu	80	0	Kuare HC											Road/Trek
		Kaware	205	0	Kuare HC											Road/Trek
		Eko	160	0	Kuare HC											Road/Trek
8	KILIPIMI 1		785	868												
		Kilipimi 1	257		Kuare HC											Road/Trek
		Kilipimi 2	306		Kuare HC											Road/Trek
		Porora	146		Kuare HC											Road/Trek
		Konoga	76		Kuare HC											Road/Trek
		Kaluake			Kuare HC											Road/Trek
9	KOYA		657	479												
		Koya	150		Kuare HC											Road/Trek
		Mamayari	345		Kuare HC											Road/Trek
		Kumbaloma	162		Kuare HC											Road/Trek
10	KUWI		497	426												
		Kuwi	396		Kuare HC											Road/Trek
		Wapi	101		Kuare HC											Road/Trek
		Kaluluma			Kuare HC											Road/Trek
11	LAPONGO		834	709												
		Lapongo	154		Kuare HC											Road/Trek
		Karimapu	171		Kuare HC											Road/Trek
		Wakere	131		Kuare HC											Road/Trek
		Kananda	88		Kuare HC											Road/Trek
		Gumapu	92		Kuare HC											Road/Trek
		Karimapu	109		Kuare HC											Road/Trek
		Lumbi	88		Kuare HC											Road/Trek
12	TINDANE		795	842												
		Kolopi	259		Kuare HC											Road/Trek
		Tindane	372		Kuare HC											Road/Trek
		Maminimi	164		Kuare HC											Road/Trek
		Mapenda			Kuare HC											Road/Trek
		Tangoloma			Kuare HC											Road/Trek
		Mapenda Pr School			Kuare HC											Road/Trek
13	PULUPARI		789	891												
		Pulupari	142		Kuare HC											Road/Trek
		Koida	203		Kuare HC											Road/Trek
		Popo	76		Kuare HC											Road/Trek
		Kangeyapu	249		Kuare HC											Road/Trek
		Waria	74		Kuare HC											Road/Trek
		Pulupari Mission	45		Kuare HC											Road/Trek
14	RAKUANDA		1,428	1,204												
		Aku	261		Kuare HC											Road/Trek

LLG	WARD	VILLAGE	Estimated 2022 Population Based On 2000 Census	Estimated 2022 Population Based On 2019 Survey	Health Centre	Population Surveyed	House Holds Surveyed	Nets Issued	Date Of Distribution	Villages	Digicel	Bmobile	Houses With Radios	Radio Networks	Comments
		Rakuanda	84		Kuare HC										Road/Trek
		Limbo	70		Kuare HC										Road/Trek
		Payamanda	58		Kuare HC										Road/Trek
		Karakure	113		Kuare HC										Road/Trek
		Munere	58		Kuare HC										Road/Trek
		Kunai	283		Kuare HC										Road/Trek
		Kalapagi	140		Kuare HC										Road/Trek
		Mala	148		Kuare HC										Road/Trek
		Rakunapi	101		Kuare HC										Road/Trek
		Yapiri	113		Kuare HC										Road/Trek
15	WALUANDA		3,162	1,421											
		Katiloma	131		Kuare HC										Road/Trek
		Mapire	109		Kuare HC										Road/Trek
		Waluanda	355		Kuare HC										Road/Trek
		Lewa	323		Kuare HC										Road/Trek
		Kolopange	201		Kuare HC										Road/Trek
		Timbi	162		Kuare HC										Road/Trek
		Baire	107		Kuare HC										Road/Trek
		Nanga	64		Kuare HC										Road/Trek
		Kusa	138		Kuare HC										Road/Trek
		Kanamanda	55		Kuare HC										Road/Trek
		Maripanda	74		Kuare HC										Road/Trek
		Monda	103		Kuare HC										Road/Trek
		Akepono	68		Kuare HC										Road/Trek
		Yamore	99		Kuare HC										Road/Trek
		Poreanda	47		Kuare HC										Road/Trek
		Kerarapu	45		Kuare HC										Road/Trek
16	WALUANDA		526	798											
		Mungiri	109		Kuare HC										Road/Trek
		Kusayo	76		Kuare HC										Road/Trek
		Kumbianda	49		Kuare HC										Road/Trek
		Koida	45		Kuare HC										Road/Trek
		Epapiri	27		Kuare HC										Road/Trek
		Nemare	269		Kuare HC										Road/Trek
		Paiamanda	35		Kuare HC										Road/Trek
		Kanayari	74		Kuare HC										Road/Trek
		Wapitame	78		Kuare HC										Road/Trek
		Kuare Station	318		Kuare HC										Road/Trek
		Mapare			Kuare HC										Road/Trek
17	KUPIA			1,045											
		Kupia			Kuare HC										Road/Trek
		Alumari			Kuare HC										Road/Trek
		Ata			Kuare HC										Road/Trek
		Kundipa			Kuare HC										Road/Trek
		Yawelea			Kuare HC										Road/Trek

ANNEX THREE

SOUTHERN HIGHLANDS PROVINCE
NIPA KUTUBU DISTRICT POPULATION 2022
LLIN DISTRIBUTION SUMMARY SHEET

VILLAGE CODING

Areas Above 2000m
Areas Between 1600m To 2000m
Areas Between 1200m to 1600m
Areas Below 1200m

LLG	WARD	VILLAGE	Estimated 2022 Population Based On 2000 Census	Estimated 2022 Population Based On 2019 Survey	Health Centre	Population Surveyed	House Holds Surveyed	Nets Issued	Date Of Distribution	Villages	Digicel	Bmobile	Houses With Radios	Radio Networks	Comments
NIPA \ KUTUBU			236,491	236,491		102,795	18,427	51,059		351	346	0	3,984	237	
LAKE KUTUBU RURAL			26,133	24,263		24,700	4,334	12,268		73	70	0	1,519	31	
	1	DU ' UBARI	1,628	1,092		1,159	227	569		3	3	0	0		
		Ifigi	643	486	Pimaga HC	558	87	268	07.04.22	1	1	0	0		Road
		Bugi	653	226	Pimaga HC	226	50	113	07.04.22	1	1	0	0		Road
		Bunu	331	380	Pimaga HC	375	90	188	07.04.22	1	1	0	0		Road
	2	GENA ' ABO	1,124	687		694	133	345		2	2	0	0		
		Gena'abo	408	255	Pimaga HC	231	49	116	08.04.22	1	1	0	0		Road
		Ibutaba	715	431	Pimaga HC	463	84	229	08.04.22	1	1	0	0		Road
	3	DAMAYU	2,055	1,727		1,603	275	784		2	2	0	0		
		Damayu	1,551	1,277	Pimaga HC	1,190	205	581	10.04.22	1	1	0	0		Road
		Pimaga Station	504	450	Pimaga HC	413	70	203	10.04.22	1	1	0	0		Road
	4	IRAKAI	1,356	1,151		1,041	190	504		5	5	0	0		
		Irakai (Asumu)	127	124	Pimaga HC	207	38	99	08.04.22	1	1	0	0		Road
		Orokana	223	124	Pimaga HC	150	23	72	08.04.22	1	1	0	0		Road
		Magi	427	275	Pimaga HC	132	25	63	08.04.22	1	1	0	0		Road
		Era've	238	349	Pimaga HC	328	67	162	08.04.22	1	1	0	0		Road
		Kawama	341	279	Pimaga HC	224	37	108	08.04.22	1	1	0	0		Road
	5	HARABIYU	1,791	1,181		1,283	244	635		5	5	0	0		
		Harabiyu	773	347	Pimaga HC	367	72	181	07.04.22	1	1	0	0		Road/Trek
		Kunifalu	319	223	Pimaga HC	290	50	145	07.04.22	1	1	0	0		Road/Trek
		Wanuma	214	158	Pimaga HC	197	41	99	07.04.22	1	1	0	0		Road/Trek
		Fogeabo	293	139	Pimaga HC	159	34	80	07.04.22	1	1	0	0		Road/Trek
		Belisigabo	192	313	Pimaga HC	270	47	130	07.04.22	1	1	0	0		Road/Trek
	6	HEREBO	1,918	1,173		1,414	227	690		4	4	0	0		
		Herebo	828	229	Pimaga HC	305	50	150	06.04.22	1	1	0	0		Road
		Barutage	266	326	Pimaga HC	266	40	128	06.04.22	1	1	0	0		Road
		Barutage	689	375	Pimaga HC	565	87	273	06.04.22	1	1	0	0		Road
		Baibu Station	134	243	Pimaga HC	278	50	139	06.04.22	1	1	0	0		Road
	7	INU	2,838	4,344		4,516	826	2,292		14	13	0	679		
		Waisame	490	159	Inu HC	130	26	65	08.04.22	1	1	0	8	NBC	Boat
		Tubege	317	295	Inu HC	309	63	159	07.04.22	1	1	0	60	NBC	Road
		Sawmill	411	349	Inu HC	321	57	163	07.04.22	1	1	0	53	NBC	Road
		Kokaya	283	0	Inu HC					1					Included Under K.Point
		Wanunuku	713	209	Inu HC	134	27	69	07.04.22	1	1	0	25	NBC	Road
		Soro	221	704	Inu HC	645	116	318	07.04.22	1	1	0	108	NBC	Road
		Inu Mission	329	151	Inu HC	115	17	59	06.04.22	1	1	0	17	NBC	Road
		Lake Kutubu High School	74	186	Inu HC	156	30	79	06.04.22	1	1	0	28	NBC	Road
		Izup		343	Inu HC	669	93	336	06.04.22	1	1	0	38	NBC	Road
		Inu Village		304	Inu HC	350	70	178	07.04.22	1	1	0	53	NBC	Road
		K.Point		308	Inu HC	319	60	157	08.04.22	1	1	0	53	NBC	Boat
		Saraka		168	Inu HC	184	50	103	08.04.22	1	1	0	36	NBC	Boat
		Kaimari Village		876	Inu HC	774	149	392	07.04.22	1	1	0	139	NBC	Road
		Kaimara Market		291	Inu HC	410	68	214	07.04.22	1	1	0	61	NBC	Road
	8	GESEGE	1,983	1,705		2,349	395	1,152		3	2	0	0		
		Gesega	883	829	Pimaga HC	978	200	480	06.04.22	1	1	0	0		Road
		Hegesgo	948	876	Pimaga HC	1,371	195	672	06.04.22	1	1	0	0		Road
		Asu	151	0	Pimaga HC					1					Included Under Hegesgo
	9	IOROGOBAYU	1,899	1,613		1,659	271	833		5	5	0	204		
		Iorogobayu	689	546	Waro HC	679	110	343	06.04.22	1	1	0	97	FM 100	Road
		Kaipu 1	610	497	Waro HC	424	67	211	04.04.22	1	1	0	47		Road
		Ubogo	228	321	Waro HC	270	45	135	06.04.22	1	1	0	28	FM 100	Road
		Kaipu 2	151	98	Waro HC	114	18	60	04.04.22	1	1	0	17		Road
		Waro Mission	221	150	Waro HC	172	31	84	06.04.22	1	1	0	15	FM 100	Road
	10	MANO	1,162	986		1,017	177	513		3	3	0	126		
		Mano	622	469	Waro HC	490	90	251	05.04.22	1	1	0	89	FM 100	Road
		Tamadigi	274	339	Waro HC	283	50	141	07.04.22	1	1	0	0		Road
		Sokai	266	178	Waro HC	244	37	121	07.04.22	1	1	0	37	FM 100	Road
	11	GOBE	1,829	1,693		1,938	365	916		11	10	0	0		
		Gobe	125	123	Kantobo HC	133	23	63	06.04.22	1	1	0	0		Dinghy trip for Distributions along the River side
		Kaibutage	221	161	Kantobo HC	130	42	70	04.04.22	1	1	0	0	SH Radio	Road
		Humane	60	34	Kantobo HC	34	10	15	06.04.22	1	1	0	0		Dinghy trip for Distributions along the River side
		Kafa	423	346	Pimaga HC	620	100	244	05.04.22	1	1	0	0		Road
		Sorotage	204	158	Kantobo HC	135	23	68	07.04.22	1	1	0	0		Dinghy trip for Distributions along the River side
		Kantobo	264	275	Kantobo HC	140	26	72	05.04.22	1	1	0	0	SH Radio	Road
		Wabigese	372	262	Pimaga HC					1					Included Under Kafa
		Kantobo Station	161	112	Kantobo HC	264	50	136	05.04.22	1	1	0	0	SH Radio	Vicinity Opposite on the other side of the River
		Hanuabo		51	Kantobo HC	82	16	43	06.04.22	1	1	0	0		Dinghy trip for Distributions along the River side
		Suruabo		170	Kantobo HC	102	21	56	07.04.22	1	1	0	0		Dinghy trip for Distributions along the River side
		Waterfront Base Camp		NEW	Kantobo HC	298	54	149	04.04.22	1	1	0	0	SH Radio	New Village

LLG	WARD	VILLAGE	Estimated 2022 Population Based On 2000 Census	Estimated 2022 Population Based On 2019 Survey	Health Centre	Population Surveyed	House Holds Surveyed	Nets Issued	Date Of Distribution	Villages	Digicel	Emobile	Houses With Radios	Radio Networks	Comments
12	HIDINIHA		1,364	1,312		1,410	201	691		4	4	0	151		
		Hidinihia	749	415	Waro HC	517	62	254	05.04.22	1	1	0	62	FM 98	Road
		Aiio	250	282	Waro HC	258	40	129	05.04.22	1	1	0	37	FM 98	Road
		Hepaiya	365	287	Waro HC	310	50	152	06.04.22	1	1	0	24	FM 100	Road
		Piti/KM5		328	Waro HC	325	49	156	05.04.22	1	1	0	28		Road
13	FIWAGA		1,582	1,299		881	177	433		2	2	0	0		
		Fiwaga	1,488	1,063	Pimaga HC	642	134	313	10.04.22	1	1	0	0		Road
		Tanuqa	94	235	Pimaga HC	239	43	120	10.04.22	1	1	0	0		Road
14	TUGIRI		1,140	933		971	201	517		2	2	0	129		
		Tugiri	641	564	Inu HC	591	101	314	07.04.22	1	1	0	63	NBC	Road
		Yo'oba	499	369	Inu HC	380	100	203	08.04.22	1	1	0	66	NBC	Boat
15	SISIBIA		1,044	1,035		782	122	390		4	4	0	97		
		Sisibia 1	144	239	Waro HC	245	45	122	04.04.22	1	1	0	29		Road
		Sisibia 2	389	443	Waro HC	239	33	117	04.04.22	1	1	0	29		Road
		Sisibia 3	370	118	Waro HC	135	18	64	04.04.22	1	1	0	17		Road
		Sisibia Community Scho	142	234	Waro HC	163	26	87	04.04.22	1	1	0	22		Road
16	YALANDA		1,419	2,334		1,983	303	1,004		4	4	0	133		
		Yalanda	936	902	Inu HC	444	63	220	06.04.22	1	1	0	46	NBC	Road/5 Hr Trek
		Baguale	483	915	Inu HC	861	150	433	06.04.22	1	1	0	38	NBC	Road/5 Hr Trek
		Kekero		203	Inu HC	561	74	289	06.04.22	1	1	0	45	NBC	Road/5 Hr Trek
		Tipa Camp		313	Inu HC	117	16	62	06.04.22	1	1	0	4	NBC	Road/5 Hr Trek
				0	TWO WARDS FROM KOMO MAGARIMA										
MT. BOSAVI RURAL			15,965	11,331		0	0	0		0	0	0	0	0	
1	LUDESA		1,971	942											Fly Into Bosavi Airstrip
		Wabimisin	655	284	Bosavi HC										Trek
		Wabisi	363	97	Bosavi HC										Trek
		Kiwediki	238	97	Bosavi HC										Trek
		Didesa	432	161	Bosavi HC										Trek
		Suguniga	257	193	Bosavi HC										Trek
		Bosavi Station	26	34	Bosavi HC										Trek
		Wasana		74	Bosavi HC										Trek
2	BONA		1,645	889											
		Bona	317	138	Muluma AP										Trek
		Muluma	221	196	Muluma AP										Trek
		Olabia	430	256	Muluma AP										Trek
		Tabili	485	122	Muluma AP										Trek
		Muluma Station	180	77	Muluma AP										Trek
		Muluma School	12	0	Muluma AP										Trek
		Haeso		99	Muluma AP										
3	WALAGU		1,455	761											Fly Into Bosavi Airstrip
		Gamo	84	43	Walagu SHC										Trek
		Yuesa	216	128	Walagu SHC										Trek
		Wosiso	115	114	Walagu SHC										Trek
		Waliaba	74	56	Walagu SHC										Trek
		Walagu	492	203	Walagu SHC										Trek
		Sohagisa	473	216	Walagu SHC										Trek
4	BOBOLE		936	775											
		Igilabosado	242	163	Walagu SHC										Trek
		Bobole	552	481	Walagu SHC										Trek
		Gimisado	142	132	Walagu SHC										Trek
5	FILISADO		663	884											Fly Into Walagu Airstrip
		?		102	Dodomona AP										
		?		28	Dodomona AP										
		?		53	Dodomona AP										
		Filisado	300	252	Dodomona AP										Trek
		Igiwa	137	82	Dodomona AP										Trek
		Modoa (Dauba)	226	207	Dodomona AP										Trek
		Paetae		106	Dodomona AP										
		?		55	Dodomona AP										
6	DODOMONA		1,112	668											Fly Into Dodomona Airstrip
		Sasimado	257	166	Dodomona AP										Trek
		Kebese	204	69	Dodomona AP										Trek
		Aifa	77	83	Dodomona AP										Trek
		Dodomona	574	350	Dodomona AP										Trek
7	BANISA		1,546	878											
		Banisa	581	364	Muluma AP										Trek
		Hasif	413	291	Muluma AP										Trek
		Wasoweido	552	223	Muluma AP										Trek
8	WANAGESA		1,306	940											
		Wanagesa	312	219	Muluma AP										Trek
		Kabano	427	239	Muluma AP										Trek
		Kukonesi	218	154	Muluma AP										Trek
		Sibalama	348	210	Muluma AP										Trek
		Dide		118	Muluma AP										
9	FOGOMAIYU		1,323	817											
		Fogomaiyu	651	362	Fogomaiyu										1 Day Trek
		Deleseu	250	127	Fogomaiyu										1 Day Trek
		Sasani	110	61	Fogomaiyu										1 Day Trek
		Sowabesi	98	94	Fogomaiyu										1 Day Trek
		Kakademaiyu	214	174	Fogomaiyu										1 Day Trek
10	MUSULA		1,044	889											Fly Into Musulu Airstrip
		Kasumisi	101	127	Musula AP										Trek
		Iwatubu	298	254	Musula AP										Trek
		Waleyo	240	241	Musula AP										Trek
		Musula	406	266	Musula AP										Trek

LLG	WARD	VILLAGE	Estimated 2022 Population Based On 2000 Census	Estimated 2022 Population Based On 2019 Survey	Health Centre	Population Surveyed	House Holds Surveyed	Nets Issued	Date Of Distribution	Villages	Digicel	Emobile	Houses With Radios	Radio Networks	Comments
11	LAKE CAMPBELL		927	861											Fly Into Lake Campbell Airstrip
		Bani		156	Lake Campbell										Trek
		Wasam		115	Lake Campbell										Trek
		Turisia		126	Lake Campbell										Trek
		Somogoba	612	240	Lake Campbell										Trek
		Lake Campbell	315	224	Lake Campbell										Trek
12	GUNIGAMO		744	437											Fly Into Walago Airstrip
		Gunigamo	221	95	Walagu SHC										Trek
		Heamona	113	96	Walagu SHC										Trek
		Gebi	132	151	Walagu SHC										Trek
		Gulesa	278	94	Walagu SHC										Trek
13	KABULUSADO		1,294	1,592											
		Aiya(Kabulusado)	521	210	Dodomona AP										4 Hr Trek
		Galoma	19	259	Dodomona AP										3 Hr Trek
		Ebedebe	463	195	Dodomona AP										5 Hr Trek
		Salodo	290	228	Dodomona AP										5 Hr Trek
		Tamalia		103	Dodomona AP										5 Hr Trek
		Bobole/Fao		598	Dodomona AP										5 Hr Trek
NEMBI PLATEAU RURAL			39,212	27,052		0	0	0			0	0	0	0	
1	UPA No `1		1,352	1,119											
		Hol			Pomberel HC										
		Purr			Pomberel HC										
2	UPA No 2		1,745	1,949											
		Palom			Pomberel HC										
		Muripa			Pomberel HC										
		Upa Pri/Sch			Pomberel HC										
3	EMBI 1		2,132	1,911											
		Pupi			Pomberel HC										
		Epi			Pomberel HC										
		Yoku			Pomberel HC										
		Endespo			Pomberel HC										
4	EMBI 2		2,221	2,412											
		Pengrup			Pomberel HC										
		Penarop			Pomberel HC										
		Kendip			Pomberel HC										
		Kono			Pomberel HC										
		Porolap			Pomberel HC										
		Koyeripa			Pomberel HC										
		Hip Pri/Sch			Pomberel HC										
5	POMBEREL 1		2,941	1,613											
		Yomo			Pomberel HC										
		Weyom			Pomberel HC										
		Sikiripa			Pomberel HC										
		Aem			Pomberel HC										
		Heyotepo			Pomberel HC										
		Pombrel Pri/Sch			Pomberel HC										
		Pombrel High/Sch			Pomberel HC										
6	POMBEREL 2		1,693	1,286											
		Mesa			Pomberel HC										
		Yesup			Pomberel HC										
		Koen			Pomberel HC										
		Wongmais			Pomberel HC										
7	TOPUA 1		1,176	919											
		Enep			Pomberel HC										
		Marop			Pomberel HC										
		Werud			Pomberel HC										
		Pombrel HC			Pomberel HC										
8	TOPUA 2		1,885	1,343											
		Tong			Pomberel HC										
		Awarpa			Pomberel HC										
		Nurusaip			Pomberel HC										
		Ongulmp			Pomberel HC										
		Apeop			Pomberel HC										
		Nong			Pomberel HC										
		Yomna			Pomberel HC										
		Topua Pri/Sch			Pomberel HC										
9	KAREMELA 1		1,167	967											
		Sikiripa			Pomberel HC										
		Epi Omdol			Pomberel HC										
		Wongmais			Pomberel HC										
		Plateau Hihg/Sch			Pomberel HC										
10	ASKAM 2		1,140	912											
		Pur			Pomberel HC										
		Puri			Pomberel HC										
		Telel			Pomberel HC										
		Topua			Pomberel HC										
		Poi Pri/Sch			Pomberel HC										
11	ASKAM 1		1,236	1,376											
		Tomyok			Pomberel HC										
		Meren			Pomberel HC										
		Polpiel			Pomberel HC										
		Podirper			Pomberel HC										
		Yonla Kolep			Pomberel HC										
		Husurpa			Pomberel HC										

LLG	WARD	VILLAGE	Estimated 2022 Population Based On 2000 Census	Estimated 2022 Population Based On 2019 Survey	Health Centre	Population Surveyed	House Holds Surveyed	Nets Issued	Date Of Distribution	Villages	Digicel	Emobile	Houses With Radios	Radio Networks	Comments
12	TEGEPO 1		2,756	805											
		Tegibo 1	2,756		Tegipo SHC										Road
13	TEGEPO 2		1,717	1,035											
		Tegibo 2	1,717		Tegipo SHC										Road
14	ENJUA 1		1,846	1,114											
		Enjua 1	1,846		Tegipo SHC										Road
15	ENJUA 2		1,544	935											
		Enjua 2	1,544		Tegipo SHC										Road
16	HULAL 1		2,110	879											
		Hulal 1	2,110		Tegipo SHC										Road
17	HULAL 2		1,116	706											
		Hulal 2	1,116		Tegipo SHC										Road
18	PINJA 1		2,009	0											
		Pinja 1	2,009	0	Tegipo SHC										Road
19	PINJA 2		2,233	0											
		Pinja 2	2,233	0	Tegipo SHC										Road
20	SEMIN 1		1,452	1,943											
		Semin 1	1,452		Semin AP										Road
21	SEMIN 2		3,740	3,826											
		Semin 2	3,740		Semin AP										Road
		Waghi			Semin AP										
NIPA RURAL			102,365	104,066		0	0	0			0	0	0	0	
1	SOI ' L 1		3,255	4,481											
		Kawari	980		Nipa HC										Road
		Hetpela	1,268		Nipa HC										Road
		Mila	1,008		Nipa HC										Road
2	NIPA HIGH SCHOOL		1,419	291											
		Nipa High School	1,419		Nipa HC										Road
3	HARALINJA		2,677	904											
		Hokte	346		Nipa HC										Road
		Anda	804		Nipa HC										Road
		Hanal	495		Nipa HC										Road
		Momea	1,032		Nipa HC										Road
4	ALMANDA 1		1,618	1,612											
		Ukaim	763		Nipa HC										Road
		Sumung	168		Nipa HC										Road
		Mundia	408		Nipa HC										Road
		Kinda	278		Nipa HC										Road
5	ALMANDA 2		1,491	1,143											
		Hokte	134		Nipa HC										Road/6 Hr Trek
		Polonda	250		Nipa HC										Road/6 Hr Trek
		Nal	118		Nipa HC										Road/6 Hr Trek
		Tokpal	163		Nipa HC										Road/6 Hr Trek
		Nongokh	154		Nipa HC										Road/6 Hr Trek
		Kowaipal	281		Nipa HC										Road/6 Hr Trek
		Tickira	149		Nipa HC										Road/6 Hr Trek
		Kakte	242		Nipa HC										Road/6 Hr Trek
6	SESEND 2		1,853	1,984											
		Enste	288		Nipa HC										Road/6 Hr Trek
		Par	346		Nipa HC										Road/6 Hr Trek
		Sekerep	583		Nipa HC										Road/6 Hr Trek
		Hala	636		Nipa HC										Road/6 Hr Trek
7	SESEND 1		2,646	4,580											
		Sesenda	756		Nipa HC										Road/Trek
		Mala	435		Nipa HC										Road/Trek
		Pep	435		Nipa HC										Road/Trek
		Tubim	507		Nipa HC										Road/Trek
		Somda	514		Nipa HC										Road/Trek
8	SOI ' L 2		2,398	4,933											
		Punip Wasipa	744		Nipa HC										Road
		Dipi Ondoa	612		Nipa HC										Road
		Malaipa	574		Nipa HC										Road
		Mila	468		Nipa HC										Road
9	SHUMBI 2		2,221	2,798											
		Kembsa	723		Nipa HC										Road/1 Day Trek
		Maipite	607		Nipa HC										Road/1 Day Trek
		Sonpa	485		Nipa HC										Road/1 Day Trek
		Tunte	406		Nipa HC										Road/1 Day Trek
10	SHUMBI 1		2,626	3,080											
		Aol	744		Nipa HC										Road/Trek
		Homata	737		Nipa HC										Road/Trek
		Sumba	559		Nipa HC										Road/Trek
		Tunmil	586		Nipa HC										Road/Trek
11	EBIL 2		2,043	4,554											
		Har	257		Nipa HC										Road
		Sowa	204		Nipa HC										Road
		Mak	166		Nipa HC										Road
		Olip	96		Nipa HC										Road
		Puginip	269		Nipa HC										Road
		Wem	134		Nipa HC										Road
		Kembil	163		Nipa HC										Road
		Solpoa	134		Nipa HC										Road
		Tela	254		Nipa HC										Road
		Wolda	214		Nipa HC										Road
		Porolol	151		Nipa HC										Road

LLG	WARD	VILLAGE	Estimated 2022 Population Based On 2000 Census	Estimated 2022 Population Based On 2019 Survey	Health Centre	Population Surveyed	House Holds Surveyed	Nets Issued	Date Of Distribution	Villages	Digicel	Emobile	Houses With Radios	Radio Networks	Comments
12	EBIL 1		1,431	3,060											
		Ebil	233		Nipa HC										Road
		Saipo	178		Nipa HC										Road
		Dira	194		Nipa HC										Road
		Solpoa	161		Nipa HC										Road
		Sukda	178		Nipa HC										Road
		Halpinja	108		Nipa HC										Road
		Seremine	125		Nipa HC										Road
		Kembil	89		Nipa HC										Road
		Sesupte	166		Nipa HC										Road
13	EGANDA 3		2,583	2,235											
		Haren	550		Nipa HC										Road
		Eganda	600		Nipa HC										Road
		Arel	418		Nipa HC										Road
		Hogmol	571		Nipa HC										Road
		Tola	444		Nipa HC										Road
14	HEREP 1		2,650	2,455											
		Aron	331		Nipa HC										Road/Trek
		Kunja	329		Nipa HC										Road/Trek
		Halo	401		Nipa HC										Road/Trek
		Polpe	391		Nipa HC										Road/Trek
		Sa Tuky	327		Nipa HC										Road/Trek
		Hombolom	343		Nipa HC										Road/Trek
		Wisup Momunso	290		Nipa HC										Road/Trek
		Kongora	238		Nipa HC										Road/Trek
15	UNGUBI 2		2,178	1,202											
		Sorip	559		Nipa HC										Road/1 Day Trek
		Ya	720		Nipa HC										Road/1 Day Trek
		Pem	447		Nipa HC										Road/1 Day Trek
		Koya	451		Nipa HC										Road/1 Day Trek
16	EGENDA 2		2,742	2,336											
		Egenda	612		Nipa HC										Road/Trek
		Malsol Urtami	759		Nipa HC										Road/Trek
		Sond	756		Nipa HC										Road/Trek
		Kuwiphal	615		Nipa HC										Road/Trek
17	EMB		2,900	2,301											
		Wapeam	300		Nipa HC										Road/1 Day Trek
		Emb	840		Nipa HC										Road/1 Day Trek
		Mungta	418		Nipa HC										Road/1 Day Trek
		Poku	574		Nipa HC										Road/1 Day Trek
		Monso	322		Nipa HC										Road/1 Day Trek
		Somda	233		Nipa HC										Road/1 Day Trek
		Isasowi	214		Nipa HC										Road/1 Day Trek
18	SUMA 1		4,938	1,732											
		Suma Homa	531		Nipa HC										Road
		Narja	262		Nipa HC										Road
		Topte	533		Nipa HC										Road
		Horol	497		Nipa HC										Road
		Hereyaol	250		Nipa HC										Road
		Hukul	475		Nipa HC										Road
		Hal Hal	247		Nipa HC										Road
		Polsonda	281		Nipa HC										Road
		Puripa	235		Nipa HC										Road
		Keson	867		Nipa HC										Road
		Tulimte	372		Nipa HC										Road
		Wipa	389		Nipa HC										Road
19	SUMA 2		4,912	1,722											
		Towan	502		Nipa HC										Road
		Ingirip	451		Nipa HC										Road
		Walipa	403		Nipa HC										Road
		Walte	423		Nipa HC										Road
		Pukmelpil	406		Nipa HC										Road
		Megep	454		Nipa HC										Road
		Hoep	341		Nipa HC										Road
		Tulimte	439		Nipa HC										Road
		Pesonda	492		Nipa HC										Road
		Puka	533		Nipa HC										Road
		Kakte	468		Nipa HC										Road
20	HEPIJA 1 & 2		5,138	7,222											
		Dula	305		Nipa HC										Road/1 Day Trek
		Wolda	264		Nipa HC										Road/1 Day Trek
		Kwim	264		Nipa HC										Road/1 Day Trek
		Huip	293		Nipa HC										Road/1 Day Trek
		Marisda	281		Nipa HC										Road/1 Day Trek
		Kaboro	411		Nipa HC										Road/1 Day Trek
		Anis	286		Nipa HC										Road/1 Day Trek
		Wolda	238		Nipa HC										Road/1 Day Trek
		Nenjoa	435		Nipa HC										Road/1 Day Trek
		Hepja	466		Nipa HC										Road/1 Day Trek
		Halop	418		Nipa HC										Road/1 Day Trek
		Pesonda	336		Nipa HC										Road/1 Day Trek
		Endepi	490		Nipa HC										Road/1 Day Trek
		Sepias	283		Nipa HC										Road/1 Day Trek
		Samoso	370		Nipa HC										Road/1 Day Trek
21	POYA 1		1,724	1,410											
		Somta	449		Nipa HC										Road

LLG	WARD	VILLAGE	Estimated 2022 Population Based On 2000 Census	Estimated 2022 Population Based On 2019 Survey	Health Centre	Population Surveyed	House Holds Surveyed	Nets Issued	Date Of Distribution	Villages	Digicel	Emobile	Houses With Radios	Radio Networks	Comments
		Mesoke	72		Nipa HC										Road
		Hesola	106		Nipa HC										Road
		Sibim	60		Nipa HC										Road
		Poya	394		Nipa HC										Road
		Porep	411		Nipa HC										Road
		Kirie	233		Nipa HC										Road
22	INGIN 2		1,549	1,594											
		Inginmanda	218		Nipa HC										Road
		Paiba	214		Nipa HC										Road
		Himinte	161		Nipa HC										Road
		Hakwa	190		Nipa HC										Road
		Peson	348		Nipa HC										Road
		Phep	418		Nipa HC										Road
23	INGIN 1		2,178	1,339											
		Ingintete	290		Nipa HC										Road
		Kipte	423		Nipa HC										Road
		Sokda	266		Nipa HC										Road
		Peya	238		Nipa HC										Road
		Arpela	142		Nipa HC										Road
		Tombel	375		Nipa HC										Road
		Koweste	158		Nipa HC										Road
		Bona	286		Nipa HC										Road
24	MEREP		3,644	2,877											
		Pinjip	533		Nipa HC										Road/1 Day Trek
		Pangal	487		Nipa HC										Road/1 Day Trek
		Ponya	343		Nipa HC										Road/1 Day Trek
		Kopa	603		Nipa HC										Road/1 Day Trek
		Kawari	334		Nipa HC										Road/1 Day Trek
		Sowepiyo	739		Nipa HC										Road/1 Day Trek
		Heja	384		Nipa HC										Road/1 Day Trek
		Surt	221		Nipa HC										Road/1 Day Trek
25	HEREP 2		2,706	3,291											
		Senjup	667		Nipa HC										Road/1 Day Trek
		Waipenda	667		Nipa HC										Road/1 Day Trek
		Kund	672		Nipa HC										Road/1 Day Trek
		Wipda	699		Nipa HC										Road/1 Day Trek
26	TUPIP		1,265	3,524											
		Topaikte	139		Nipa HC										Road/2 Day Trek
		Tugida	84		Nipa HC										Road/2 Day Trek
		Herda	108		Nipa HC										Road/2 Day Trek
		Sombol	226		Nipa HC										Road/2 Day Trek
		Hal 1	175		Nipa HC										Road/2 Day Trek
		Hal 2	533		Nipa HC										Road/2 Day Trek
27	POYA 2		2,305	1,552											
		Hinjip	375		Nipa HC										Road
		Hopaim	178		Nipa HC										Road
		Kowim	303		Nipa HC										Road
		Honem	759		Nipa HC										Road
		Hukun	691		Nipa HC										Road
28	NIPA STATION		2,019	1,773											
		Police Barracks	545		Nipa HC										Road
		District Services	502		Nipa HC										Road
		Council Compound	286		Nipa HC										Road
		Hospital Compound	687		Nipa HC										Road
29	UNGUBI 1		1,649	1,280											
		Ungubi	847		Nipa HC										Road
		Tiba	218		Nipa HC										Road
		Koata	336		Nipa HC										Road
		Tom	247		Nipa HC										Road
30	EGENDA 1		2,989	2,793											
		Arep/Mulis	859		Nipa HC										Road
		Soakwa	382		Nipa HC										Road
		Tundap	459		Nipa HC										Road
		Merep	391		Nipa HC										Road
		Kopeso	898		Nipa HC										Road
31	PULIM 3		4,168	3,493											
		Hundit	550		Nipa HC										Road
		Hulda	552		Nipa HC										Road
		Minjakom	504		Nipa HC										Road
		Sengma	514		Nipa HC										Road
		Mala	495		Nipa HC										Road
		Walte	437		Nipa HC										Road
		Komda	605		Nipa HC										Road
		Nungu Ipalpal	511		Nipa HC										Road
32	PULIM 2		2,595	2,487											
		Nemda	826		Nipa HC										Road
		Kako	327		Nipa HC										Road
		Henal	283		Nipa HC										Road
		Pondipte	375		Nipa HC										Road
		Wip	785		Nipa HC										Road
33	PULIM 1		2,430	2,292											
		Wakung	593		Nipa HC										Road
		Tal	639		Nipa HC										Road
		Tekena	715		Nipa HC										Road
		Mariste	483		Nipa HC										Road
34	KWARE 2		3,284	2,961											

LLG	WARD	VILLAGE	Estimated 2022 Population Based On 2000 Census	Estimated 2022 Population Based On 2019 Survey	Health Centre	Population Surveyed	House Holds Surveyed	Nets Issued	Date Of Distribution	Villages	Digicel	Emobile	Houses With Radios	Radio Networks	Comments
		Puril	399		Nipa HC										Road
		Hurua	492		Nipa HC										Road
		Mopra/Yorda	603		Nipa HC										Road
		Pala	358		Nipa HC										Road
		Wolhoma	739		Nipa HC										Road
		Mongronemte	499		Nipa HC										Road
		Henesuit	194		Nipa HC										Road
35	KWARE 1		2,833	3,036											
		Kware	1,097		Nipa HC										Road
		Hesmol	384		Nipa HC										Road
		Tolhupis	315		Nipa HC										Road
		Mapur	475		Nipa HC										Road
		Tip	334		Nipa HC										Road
		Hurua	228		Nipa HC										Road
36	KOMEA 2		2,142	898											
		Tuliseda	586		Nipa HC										Road
		Ingisip	396		Nipa HC										Road
		Pombo	634		Nipa HC										Road
		Moete	158		Nipa HC										Road
		Kerep	367		Nipa HC										Road
37	KOMEA 1		2,185	1,435											
		Topama	276		Nipa HC										Road
		Waikpelte	411		Nipa HC										Road
		Olmahae	264		Nipa HC										Road
		Polonda	377		Nipa HC										Road
		Marung	286		Nipa HC										Road
		Peyakung	242		Nipa HC										Road
		Ingimipa	329		Nipa HC										Road
38	KOMBELA		1,445	1,927											
		Hunbi	466		Nipa HC										Road
		Wap	329		Nipa HC										Road
		He	252		Nipa HC										Road
		Wepia	399		Nipa HC										Road
39	INJIP 2		2,780	5,299											
		Saharala	744		Nipa HC										Road
		Omutimda	290		Nipa HC										Road
		Mungte	214		Nipa HC										Road
		Kembisa	281		Nipa HC										Road
		Somberep	432		Nipa HC										Road
		Pepilonda	274		Nipa HC										Road
		Mopolo	202		Nipa HC										Road
		Pesi	343		Nipa HC										Road
40	INJIP 1		2,756	3,004											
		Obla	425		Nipa HC										Road
		Timte	792		Nipa HC										Road
		Yuk	691		Nipa HC										Road
		Moroal	459		Nipa HC										Road
		Mesda	389		Nipa HC										Road
41	HONT/TONDAN			1,177											
		Ombolep			Nipa HC										
		Kaware			Nipa HC										
		Himbombu			Nipa HC										
		Honhoma			Nipa HC										
		Hererap			Nipa HC										
POROMA RURAL			52,815	69,780		78,095	14,093	38,791		278	276	0	2,465	206	
1	KONGU		3,601	3,801		5,456	929	2,642		18	18	0	594		
		Sengda	230	226	Kar SHC	291	50	140	05.04.22	1	1	0	25	90.7FM	Road/3-4 Hr Trek
		Sengda Surua	163	149	Kar SHC	180	50	90	05.04.22	1	1	0	0	90.7FM	Road/3-4 Hr Trek
		Howaranda	317	98	Kar SHC	346	50	161	05.04.22	1	1	0	35	90.7FM	Road/3-4 Hr Trek
		Peowe	101	182	Kar SHC	197	26	95	05.04.22	1	1	0	16	90.7FM	Road/3-4 Hr Trek
		Bimp	170	196	Kar SHC	202	32	98	05.04.22	1	1	0	30	90.7FM	Road/3-4 Hr Trek
		Okura	425	507	Kar SHC	550	100	264	05.04.22	1	1	0	0	90.7FM	Road/3-4 Hr Trek
		Epi	84	465	Kar SHC	308	60	151	05.04.22	1	1	0	44	90.7FM	Road/3-4 Hr Trek
		Korowa	274	370	Kar SHC	392	77	211	05.04.22	1	1	0	76	90.7FM	Road/3-4 Hr Trek
		Meiso	305	230	Kar SHC	321	50	155	05.04.22	1	1	0	31	90.7FM	Road/3-4 Hr Trek
		Sengima	204	142	Kar SHC	272	50	131	05.04.22	1	1	0	38	90.7FM	Road/3-4 Hr Trek
		Mela	180	337	Kar SHC	771	100	368	05.04.22	1	1	0	99	90.7FM	Road/3-4 Hr Trek
		Wim	305	180	Kar SHC	203	38	98	05.04.22	1	1	0	38	90.7FM	Road/3-4 Hr Trek
		Sikda	185	117	Kar SHC	287	50	136	05.04.22	1	1	0	47	90.7FM	Road/3-4 Hr Trek
		Kol	163	84	Kar SHC	188	33	90	05.04.22	1	1	0	29	90.7FM	Road/3-4 Hr Trek
		Songaip	204	69	Kar SHC	117	22	56	05.04.22	1	1	0	20	90.7FM	Road/3-4 Hr Trek
		Alpo/Tongom	290	175	Kar SHC	318	49	150	05.04.22	1	1	0	26	90.7FM	Road/3-4 Hr Trek
		Tuk		96	Kar SHC	255	42	124	05.04.22	1	1	0	27	90.7FM	Road/3-4 Hr Trek
		Pehger		177	Kar SHC	258	50	124	05.04.22	1	1	0	13	90.7FM	Road/3-4 Hr Trek
2	TINDOM 2		3,973	4,496		6,877	1,001	3,296		11	10	0	255		
		Disa	396	352	Kar SHC	677	100	328	06.04.22	1	1	0	0	90.7FM	Road
		Wesipa	444	598	Kar SHC	481	79	238	06.04.22	1	1	0	60	90.7FM	Road
		Tindom Komko	593	704	Kar SHC	1,034	150	502	06.04.22	1	1	0	0	90.7FM	Road
		Pembi-Ko	240	336	Kar SHC	637	100	288	06.04.22	1	1	0	0	90.7FM	Road
		Epel-Hapipep	552	356	Kar SHC	696	93	329	06.04.22	1	1	0	0	90.7FM	Road
		Porowa-Hanai	396	336	Kar SHC	867	100	402	06.04.22	1	1	0	0	90.7FM	Road
		Sapso	483	275	Kar SHC	313	50	150	06.04.22	1	1	0	31	90.7FM	Road
		Moapai	471	600	Kar SHC	684	100	330	06.04.22	1	1	0	22	90.7FM	Road
		Ipante	399	199	Kar SHC	185	31	90	06.04.22	1	1	0	21	90.7FM	Road
		Wespa		356	Kar SHC	774	98	369	06.04.22	1	0	0	51	90.7FM	Road

LLG	WARD	VILLAGE	Estimated 2022 Population Based On 2000 Census	Estimated 2022 Population Based On 2019 Survey	Health Centre	Population Surveyed	House Holds Surveyed	Nets Issued	Date Of Distribution	Villages	Digicel	Emobile	Houses With Radios	Radio Networks	Comments
		Dimdem		384	Kar SHC	529	100	270	06.04.22	1	1	0	70	90.7FM	Road
3	MONDESAREP		5,899	6,696		9,304	1,564	4,604		18	18	0	158		
		Ole	295	346	Kar SHC	672	100	327	12.04.22	1	1	0		90.7FM	Road
		Sord Mond	960	500	Kar SHC	680	100	345	12.04.22	1	1	0	34	90.7FM	Road
		Heyes	315	312	Kar SHC	619	100	305	12.04.22	1	1	0		90.7FM	Road
		Wopela	132	232	Kar SHC	277	50	130	12.04.22	1	1	0	36	90.7FM	Road
		Kusa Malom	406	472	Kar SHC	434	100	229	12.04.22	1	1	0		90.7FM	Road
		Howdom Waip	473	533	Kar SHC	588	100	284	12.04.22	1	1	0	48	90.7FM	Road
		Tela	487	593	Kar SHC	601	100	288	12.04.22	1	1	0	2	90.7FM	Road
		Ombim	454	600	Kar SHC	879	165	456	12.04.22	1	1	0		90.7FM	Road
		Sarep	509	223	Kar SHC	266	50	139	12.04.22	1	1	0		90.7FM	Road
		Heal	439	478	Kar SHC	659	100	325	12.04.22	1	1	0	10	90.7FM	Road
		Epi	420	570	Kar SHC	567	100	272	12.04.22	1	1	0	0	90.7FM	Road
		Serpi	516	308	Kar SHC	612	100	304	12.04.22	1	1	0		90.7FM	Road
		Mungte	492	269	Kar SHC	285	49	147	12.04.22	1	1	0	10	90.7FM	Road
		Munga		253	Kar SHC	340	50	163	12.04.22	1	1	0		90.7FM	Road
		Soro		265	Kar SHC	262	50	133	12.04.22	1	1	0	18	90.7FM	Road
		Elipa		319	Kar SHC	707	100	338	12.04.22	1	1	0		90.7FM	Road
		Ulem		80	Kar SHC	292	50	141	12.04.22	1	1	0		90.7FM	Road
		Workum		343	Kar SHC	564	100	278	12.04.22	1	1	0		90.7FM	Road
4	KAR		3,973	3,699		4,550	826	2,248		15	15	0	512		
		Kar	274	238	Kar SHC	269	49	130	07.04.22	1	1	0	38	90.7FM	Road
		Waip	216	327	Kar SHC	599	77	284	07.04.22	1	1	0	73	90.7FM	Road
		Punua	132	274	Kar SHC	324	50	155	07.04.22	1	1	0	21	90.7FM	Road
		Wirin	483	427	Kar SHC	328	64	160	07.04.22	1	1	0	30	90.7FM	Road
		Asipa	266	324	Kar SHC	481	89	242	07.04.22	1	1	0	14	90.7FM	Road
		Kanada	178	239	Kar SHC	258	50	140	07.04.22	1	1	0	31	90.7FM	Road
		Parmenda	134	210	Kar SHC	83	21	44	07.04.22	1	1	0	14	90.7FM	Road
		Sarol	223	250	Kar SHC	132	26	64	07.04.22	1	1	0	26	90.7FM	Road
		Wolup	197	240	Kar SHC	280	50	135	07.04.22	1	1	0	27	90.7FM	Road
		Mala/Sombul	677	268	Kar SHC	322	50	155	07.04.22	1	1	0	37	90.7FM	Road
		Lepsep	142	149	Kar SHC	253	50	121	07.04.22	1	1	0	4	90.7FM	Road
		Disa	550	0	Kar SHC	239	50	118	07.04.22	1	1	0	38	90.7FM	Road
		Kar Station	502	203	Kar SHC	250	50	129	07.04.22	1	1	0	48	90.7FM	Road
		Ongolom		226	Kar SHC	328	50	158	07.04.22	1	1	0	50	90.7FM	Road
		Kawari		325	Kar SHC	404	100	213	07.04.22	1	1	0	61	90.7FM	Road
5	UTUPIA		5,282	5,604		6,915	1,152	3,356		18	17	0	653		
		Pipim	271	287	Kar SHC	430	100	207	08.04.22	1	1	0	97	90.7FM	Road
		Wongu	274	628	Kar SHC	618	90	292	08.04.22	1	1	0	87	90.7FM	Road
		Ulim	379	157	Kar SHC	177	32	85	08.04.22	1	1	0	0	90.7FM	Road
		Telem	903	695	Kar SHC	436	50	210	08.04.22	1	1	0	47	90.7FM	Road
		Sorun	725	280	Kar SHC	632	100	311	08.04.22	1	1	0	97	90.7FM	Road
		Temla	211	226	Kar SHC	268	50	127	08.04.22	1				90.7FM	Road
		Utupia	463	464	Kar SHC	532	100	252	08.04.22	1	1	0	70	90.7FM	Road
		Tipim	98	346	Kar SHC	560	100	277	08.04.22	1	1	0	14	90.7FM	Road
		Umim	238	360	Kar SHC	515	75	251	08.04.22	1	1	0	72	90.7FM	Road
		Sukul	156	338	Kar SHC	397	75	193	08.04.22	1	1	0	4	90.7FM	Road
		Esda	182	291	Kar SHC	591	100	295	08.04.22	1	1	0	2	90.7FM	Road
		Kumanda	134	219	Kar SHC	180	37	92	08.04.22	1	1	0	28	90.7FM	Road
		Blessing Centre	339	234	Kar SHC	237	34	116	08.04.22	1	1	0	28	90.7FM	Road
		Kosteanda	82	261	Kar SHC	181	35	92	08.04.22	1	1	0	26	90.7FM	Road
		Wopol	98	229	Kar SHC	265	41	127	08.04.22	1	1	0	0	90.7FM	Road
		Tokura	327	160	Kar SHC	299	44	143	08.04.22	1	1	0	41	90.7FM	Road
		Edep	137	251	Kar SHC	305	39	146	08.04.22	1	1	0	21	90.7FM	Road
		Kip-Omleipa	264	177	Kar SHC	292	50	140	08.04.22	1	1	0	19	90.7FM	Road
6	UNDU KOPA		2,048	3,728		3,258	672	1,665		18	18	0	26		
		Kesu	89	122	Det HC	266	49	142	05.04.22	1	1	0	4	90.7 FM	Road/Trek
		Kenda	168	84	Det HC	90	20	48	06.04.22	1	1	0	9	90.7 FM	Road
		Wapip	197	127	Det HC	182	32	90	06.04.22	1	1	0	13	90.7 FM	Road
		Mespam	137	223	Det HC	174	40	98	06.04.22	1	1	0	0	90.7 FM	Road
		Kasarana	197	166	Det HC	282	50	136	06.04.22	1	1	0	0	90.7 FM	Road
		Undu	377	213	Det HC	206	40	108	07.04.22	1	1	0	0	90.7 FM	Road
		Sepa	175	117	Det HC	70	12	34	06.04.22	1	1	0	0	90.7 FM	Road/Trek
		Kopa	305	509	Det HC	369	80	186	05.04.22	1	1	0	0	90.7 FM	Road
		Kupul	19	302	Det HC	83	14	39	06.04.22	1	1	0	0	90.7 FM	Road
		Andol	22	72	Det HC	171	37	87	05.04.22	1	1	0	0	90.7 FM	Road/Trek
		Wepi	38	223	Det HC	198	50	107	05.04.22	1	1	0	0	90.7 FM	Road/Trek
		Etonipa	53	223	Det HC	124	30	68	05.04.22	1	1	0	0	90.7 FM	Road/Trek
		Monouti/Supan	271	85	Det HC	133	24	69	06.04.22	1	1	0	0	90.7 FM	Road/Trek
		Muguty		193	Det HC	160	30	74	07.04.22	1	1	0	0	90.7 FM	Road/Trek
		Rakere		145	Det HC	133	32	73	07.04.22	1	1	0	0	90.7 FM	Road
		Maia Bridge		223	Det HC	226	50	111	05.04.22	1	1	0	0	90.7 FM	Road
		Suanda		454	Det HC	212	43	104	06.04.22	1	1	0	0	90.7 FM	Road
		Terep (Arako)		245	Det HC	179	39	91	06.04.22	1	1	0	0	90.7 FM	Road
7	FARATA		927	1,045		987	186	476		5	5	0	4		
		Yarol	180	264	Det HC	261	47	135	04.04.22	1	1	0	0	90.7 FM	Road
		Farata	151	216	Det HC	268	50	124	04.04.22	1	1	0	2	90.7 FM	Road
		Ott	202	148	Det HC	271	50	134	04.04.22	1	1	0	0	90.7 FM	Road
		Tukura	185	231	Det HC	87	18	41	04.04.22	1	1	0	0	90.7 FM	Road
		Marere	209	186	Det HC	100	21	42	04.04.22	1	1	0	2	90.7 FM	Road
8	KUSA		1,308	1,455		1,131	188	547		11	11	0	13		
		Rukutanda	149	84	Det HC	86	15	45	04.04.22	1	1	0	0	FM 90.7	Road/2-3 Hr Trek
		Reyata	149	128	Det HC	50	11	23	04.04.22	1	1	0	1	FM 90.7	Road/2-3 Hr Trek
		Meko	84	42	Det HC	73	15	36	04.04.22	1	1	0	0	FM 90.7	Road/2-3 Hr Trek
		Rekenda	209	181	Det HC	132	15	64	04.04.22	1	1	0	0	FM 90.7	Road/2-3 Hr Trek
		Kaweri	101	130	Det HC	100	20	50	04.04.22	1	1	0	5	FM 90.7	Road/2-3 Hr Trek

LLG	WARD	VILLAGE	Estimated 2022 Population Based On 2000 Census	Estimated 2022 Population Based On 2019 Survey	Health Centre	Population Surveyed	House Holds Surveyed	Nets Issued	Date Of Distribution	Villages	Digicel	Emobile	Houses With Radios	Radio Networks	Comments
		Rengip	103	98	Det HC	93	11	44	04.04.22	1	1	0	0	FM 90.7	Road/2-3 Hr Trek
		Rari	48	218	Det HC	138	27	64	04.04.22	1	1	0	1	FM 90.7	Road/2-3 Hr Trek
		Arep	127	126	Det HC	129	22	66	04.04.22	1	1	0	0	FM 90.7	Road/2-3 Hr Trek
		Wepi	125	103	Det HC	122	17	60	04.04.22	1	1	0	6	FM 90.7	Road/2-3 Hr Trek
		Rawanda	48	104	Det HC	140	23	65	04.04.22	1	1	0	0	FM 90.7	Road/2-3 Hr Trek
		Kusa	166	240	Det HC	68	12	30	04.04.22	1	1	0	0	FM 90.7	Road/2-3 Hr Trek
9	DET		1,976	2,301		1,958	405	1,002		11	11	0	0		
		Det	293	191	Det HC	173	32	85	06.04.22	1	1	0	0	FM 90.7	Road
		Arepama	50	103	Det HC	117	20	58	06.04.22	1	1	0	0	FM 90.7	Road
		Kawere	245	228	Det HC	231	37	106	07.04.22	1	1	0	0	FM 90.7	Road
		Holop	199	387	Det HC	287	62	146	07.04.22	1	1	0	0	FM 90.7	Road
		Awaranda	550	427	Det HC	364	87	189	05.04.22	1	1	0	0	FM 90.7	Road
		Yoru	48	71	Det HC	51	10	29	05.04.22	1	1	0	0	FM 90.7	Road
		Piru	173	329	Det HC	375	80	208	07.04.22	1	1	0	0	FM 90.7	Road
		Aropotam	185	133	Det HC	114	27	59	06.04.22	1	1	0	0	FM 90.7	Road
		Mabuowoe	120	78	Det HC	86	16	42	06.04.22	1	1	0	0	FM 90.7	Road
		Det Station	113	124	Det HC	98	24	50	06.04.22	1	1	0	0	FM 90.7	Road
		Kambra - Huprit		230	Det HC	62	10	30	07.04.22	1	1	0	0	FM 90.7	Road
10	ONJA - RUNDU		1,940	2,244		1,766	397	892		12	12	0	0		
		Rundu	353	213	Det HC	137	34	71	05.04.22	1	1	0	0	FM 90.7	Road/Trek
		Kipra	194	239	Det HC	117	27	59	05.04.22	1	1	0	0	FM 90.7	Road/Trek
		Arako	58	129	Det HC	132	44	68	05.04.22	1	1	0	0	FM 90.7	Road/Trek
		Uria	98	84	Det HC	56	13	33	05.04.22	1	1	0	0	FM 90.7	Road/Trek
		Apra	151	200	Det HC	204	48	102	05.04.22	1	1	0	0	FM 90.7	Road/Trek
		Kembeyari	156	145	Det HC	109	27	55	05.04.22	1	1	0	0	FM 90.7	Road/Trek
		Seke	132	77	Det HC	135	20	64	05.04.22	1	1	0	0	FM 90.7	Road/Trek
		Onja	197	0	Det HC	190	39	95	05.04.22	1	1	0	0	FM 90.7	Road
		Margorlam	252	301	Det HC	194	34	92	05.04.22	1	1	0	0	FM 90.7	Road
		Yekipu/Kupreanda	125	307	Det HC	212	46	107	05.04.22	1	1	0	0	FM 90.7	Road
		Rombakeanda	84	237	Det HC	124	30	64	05.04.22	1	1	0	0	FM 90.7	Road
		Hellet	139	312	Det HC	156	35	82	05.04.22	1	1	0	0	FM 90.7	Road
11	WALUMESA		1,937	2,716		3,053	588	1,533		19	19	0	204		
		Walumesa	77	105	Det HC	123	27	62	09.04.22	1	1	0	0	FM 90.7	Road
		Rowanda	84	158	Det HC	100	30	54	09.04.22	1	1	0	0	FM 90.7	Road
		Engelam	199	283	Det HC	118	11	58	09.04.22	1	1	0	0	FM 90.7	Road
		Sipili	142	239	Det HC	174	30	88	09.04.22	1	1	0	0	FM 90.7	Road
		Osora	86	116	Det HC	107	17	56	09.04.22	1	1	0	0	FM 90.7	Road
		Engreanda	103	142	Det HC	71	21	41	08.04.22	1	1	0	0	FM 90.7	Road
		Yengianda	173	66	Det HC	246	50	122	09.04.22	1	1	0	38	FM 90.7	Road
		Wambu/Meisa	120	57	Det HC	84	17	41	08.04.22	1	1	0	8	FM 90.7	Road
		Iprep/Onasopre	187	243	Det HC	352	63	185	09.04.22	1	1	0	46	FM 90.7	Road
		Nowep	17	101	Det HC	72	15	40	08.04.22	1	1	0	0	FM 90.7	Road
		Paporongai	65	129	Det HC	131	26	65	08.04.22	1	1	0	0	FM 90.7	Road
		Mutreanda	96	55	Det HC	103	16	52	08.04.22	1	1	0	0	FM 90.7	Road
		Pereanda	77	25	Det HC	62	15	34	08.04.22	1	1	0	0	FM 90.7	Road
		Yolam	94	90	Det HC	106	21	56	08.04.22	1	1	0	0	FM 90.7	Road
		Poanda	91	109	Det HC	66	14	32	08.04.22	1	1	0	0	FM 90.7	Road
		Rakianda	79	27	Det HC	112	24	63	08.04.22	1	1	0	0	FM 90.7	Road
		Wepinam	216	138	Det HC	101	20	48	08.04.22	1	1	0	8	FM 90.7	Road
		Regema	31	43	Det HC	103	21	52	08.04.22	1	1	0	0	FM 90.7	Road
		Onasopre		589	Det HC	822	150	384	08.04.22	1	1	0	104	FM 90.7	Road/4-5hr Trek
12	PAMBAL		905	1,261		1,198	207	590		6	6	0	23		
		Pambal	166	158	Det HC	252	50	119	08.04.22	1	1	0	0	FM 90.7	Road/2-3 Hr Trek
		Apigipi	84	305	Det HC	292	50	144	08.04.22	1	1	0	4	FM 90.7	Road/2-3 Hr Trek
		Pun	142	117	Det HC	187	31	90	08.04.22	1	1	0	5	FM 90.7	Road/2-3 Hr Trek
		Pumble	199	270	Det HC	156	25	80	08.04.22	1	1	0	2	FM 90.7	Road/2-3 Hr Trek
		Seke	130	134	Det HC	125	22	64	08.04.22	1	1	0	0	FM 90.7	Road/2-3 Hr Trek
		Kasrena	185	277	Det HC	186	29	93	08.04.22	1	1	0	12	FM 90.7	Road/2-3 Hr Trek
13	KAPIT KUM		1,637	3,242		3,710	744	1,866		12	12	0	1		
		Towanda/Wepi	65	230	Kar SHC	268	50	141	09.04.22	1	1	0		90.7FM	Road
		Gimi/Merep	170	258	Kar SHC	293	50	140	09.04.22	1	1	0		90.7FM	Road
		Kapit	185	421	Pomberel SHC2	331	89	165	07.04.22	1	1	0	0		Road
		Kapipa	156	348	Pomberel SHC2	437	92	224	07.04.22	1	1	0	0		Road
		Weli	79	130	Pomberel SHC2	165	36	84	09.04.22	1	1	0	1		Road/Trek
		Popei	91	224	Pomberel SHC2	257	50	128	08.04.22	1	1	0	0		Road/Trek
		Uplam	146	218	Kar SHC	251	47	131	09.04.22	1	1	0		90.7FM	Road
		Mele	163	303	Kar SHC	401	68	195	09.04.22	1	1	0		90.7FM	Road
		Sumi-Pembiko		210	Kar SHC	53	11	29	09.04.22	1	1	0		90.7FM	Road
		Hep	343	234	Pomberel SHC2	255	50	128	08.04.22	1	1	0	0		Road/Trek
		Kombe	158	251	Pomberel SHC2	658	132	329	07.04.22	1	1	0	0		Road
		Menkeyowe	79	415	Pomberel SHC2	341	69	172	07.04.22	1	1	0	0		Road
14	PURTRE		1,272	1,206		2,035	379	1,011		8	8	0	2		
		Tiplam	161	169	Pomberel SHC2	366	49	180	04.04.22	1	1	0	0		Road
		Wita	216	123	Pomberel SHC2	172	36	86	04.04.22	1	1	0	0		Road/Trek
		Rimbuanda	151	127	Pomberel SHC2	148	22	75	04.04.22	1	1	0	0		Road
		Kepta	82	125	Pomberel SHC2	219	44	112	04.04.22	1	1	0	0		Road/Trek
		Rania	127	172	Pomberel SHC2	235	46	114	04.04.22	1	1	0	0		Road
		Purtre	322	211	Pomberel SHC2	320	70	159	04.04.22	1	1	0	2		Road
		Rombalre/Wolup	84	114	Pomberel SHC2	355	76	176	04.04.22	1	1	0	0		Road
		Nowa	130	165	Pomberel SHC2	220	36	109	04.04.22	1	1	0	0		Road/Trek
15	WANGA		2,154	2,691		4,252	797	2,113		11	11	0	14		
		Pama	259	324	Pomberel SHC2	633	132	321	01.04.22	1	1	0	0		Road
		Rongo	322	165	Pomberel SHC2	233	44	116	01.04.22	1	1	0	0		Road
		Wanga	756	375	Pomberel SHC2	741	150	360	01.04.22	1	1	0	7		Road
		Masorobe	77	191	Pomberel SHC2	211	33	108	01.04.22	1	1	0	0		Road/Trek
		Kengatal	122	207	Pomberel SHC2	288	50	142	01.04.22	1	1	0	4		Road/Trek

LLG	WARD	VILLAGE	Estimated 2022 Population Based On 2000 Census	Estimated 2022 Population Based On 2019 Survey	Health Centre	Population Surveyed	House Holds Surveyed	Nets Issued	Date Of Distribution	Villages	Digicel	Emobile	Houses With Radios	Radio Networks	Comments
		Porep	82	260	Pomberel SHC2	486	50	241	05.04.22	1	1	0	0		Road
		Apa	190	135	Pomberel SHC2	205	48	102	05.04.22	1	1	0	0		Road
		Akea	130	242	Pomberel SHC2	266	50	135	01.04.22	1	1	0	1		Road
		Poropu	74	206	Pomberel SHC2	425	95	214	01.04.22	1	1	0	0		Road/Trek
		Yuta	142	241	Pomberel SHC2	335	50	164	01.04.22	1	1	0	0		Road/Trek
		Yuta		346	Pomberel SHC2	429	95	210	01.04.22	1	1	0	2		Road/Trek
16	MATO		1,563	2,717		1,485	344	765		11	11	0	0		
		Mato	233	383	Poroma HC	165	38	82	07.04.22	1	1	0	0	FM 90.7	Road
		Werisumba	163	212	Poroma HC	128	33	65	07.04.22	1	1	0	0	FM 90.7	Road
		Remanda	168	242	Poroma HC	168	50	87	07.04.22	1	1	0	0	FM 90.7	Road/Trek
		Yoru	288	269	Poroma HC	137	32	69	07.04.22	1	1	0	0	FM 90.7	Road
		Wombu	84	78	Poroma HC	29	7	17	04.04.22	1	1	0	0	FM 90.7	Road/Trek
		Rorola	144	227	Poroma HC	62	14	31	07.04.22	1	1	0	0	FM 90.7	Road
		Pulum	204	286	Poroma HC	282	50	147	04.04.22	1	1	0	0	FM 90.7	Road
		Alalowe	163	308	Poroma HC	267	50	131	06.04.22	1	1	0	0	FM 90.7	Road
		Walangisa	53	291	Poroma HC	119	32	65	07.04.22	1	1	0	0	FM 90.7	Road
		Wembeta		239	Poroma HC	75	25	44	04.04.22	1	1	0	0	FM 90.7	Road/Trek
		Mungulam	62	182	Poroma HC	53	13	27	07.04.22	1	1	0	0	FM 90.7	Road
17	NENJA		2,773	4,107		3,444	664	1,781		18	18	0	0		
		Nenja	103	143	Taminda SHC	211	37	106	08.04.22	1	1	0	0		Trek
		Emiya	425	501	Taminda SHC	444	100	227	08.04.22	1	1	0	0		Trek
		Endowa	60	485	Taminda SHC	454	98	243	09.04.22	1	1	0	0		Trek
		Yepit	50	164	Taminda SHC	220	50	120	08.04.22	1	1	0	0		Trek
		Popei	137	134	Taminda SHC	211	50	116	09.04.22	1	1	0	0		Trek
		Halomra	74	383	Taminda SHC	70	18	37	09.04.22	1	1	0	0		Trek
		Humbo	238	108	Taminda SHC	238	50	137	09.04.22	1	1	0	0		Trek
		Humul	288	133	Taminda SHC	115	25	58	09.04.22	1	1	0	0		Trek
		Poropanda	144	163	Taminda SHC	90	19	47	09.04.22	1	1	0	0		Trek
		Ropo	197	161	Taminda SHC	93	21	46	09.04.22	1	1	0	0		Trek
		Hembe	139	190	Taminda SHC	258	38	126	09.04.22	1	1	0	0		Trek
		Mandamao	134	108	Taminda SHC	128	20	63	09.04.22	1	1	0	0		Trek
		Omu	115	304	Taminda SHC	207	30	97	09.04.22	1	1	0	0		Trek
		Wombuanda	106	303	Taminda SHC	142	19	69	09.04.22	1	1	0	0		Trek
		Keire	94	153	Taminda SHC	126	17	65	09.04.22	1	1	0	0		Trek
		Otakuwe	115	97	Taminda SHC	127	20	65	09.04.22	1	1	0	0		Trek
		Yengianda	209	295	Taminda SHC	168	29	88	09.04.22	1	1	0	0		Trek
		Kipolu	144	283	Taminda SHC	142	23	71	09.04.22	1	1	0	0		Trek
18	POROMAN STATION		389	642		580	106	286		3	3	0	5		
		Health Centre	14	179	Poroma HC	135	32	67	08.04.22	1	1	0	5	FM 90.7	Road
		Suara	122	175	Poroma HC	188	24	94	08.04.22	1	1	0	0	FM 90.7	Road
		Poroma Station	252	289	Poroma HC	257	50	125	08.04.22	1	1	0	0	FM 90.7	Road
19	KUPIPI		1,882	3,160		3,451	683	1,742		15	15	0	0		
		Omarepe	146	49	Poroma HC	153	26	76	08.04.22	1	1	0	0	FM 90.7	Road
		Yuguta	122	139	Poroma HC	204	28	100	08.04.22	1	1	0	0	FM 90.7	Road
		Olu	70	157	Poroma HC	194	45	102	04.04.22	1	1	0	0	FM 90.7	Road
		Ponei	50	70	Poroma HC	92	20	52	04.04.22	1	1	0	0	FM 90.7	Road
		Humbi	67	102	Poroma HC	229	50	114	04.04.22	1	1	0	0	FM 90.7	Road/Trek
		Yandipi	166	375	Poroma HC	94	15	46	04.04.22	1	1	0	0	FM 90.7	Road
		Kangolo	312	291	Poroma HC	336	61	167	04.04.22	1	1	0	0	FM 90.7	Road/Trek
		Poronda	62	297	Poroma HC	196	35	100	04.04.22	1	1	0	0	FM 90.7	Road
		Kaweri	103	214	Poroma HC	210	46	105	04.04.22	1	1	0	0	FM 90.7	Road
		Paruand	130	276	Poroma HC	81	21	43	04.04.22	1	1	0	0	FM 90.7	Road/Trek
		Penja/Kupipi	120	261	Poroma HC	480	100	233	08.04.22	1	1	0	0	FM 90.7	Road
		Pulummra	334	188	Poroma HC	248	50	124	08.04.22	1	1	0	0	FM 90.7	Road
		Wangaro	199	463	Poroma HC	206	48	105	04.04.22	1	1	0	0	FM 90.7	Road/Trek
		Awa		277	Poroma HC	332	50	179	04.04.22	1	1	0	0	FM 90.7	Road
		Umbu		NEW	Poroma HC	396	88	196	04.04.22	1	1	0	0	FM 90.7	Road/ new village
20	POROMA		1,412	2,588		2,727	522	1,407		10	10	0	1		
		Poroma	288	318	Poroma HC	280	50	147	06.04.22	1	1	0	0	FM 90.7	Road
		Peret/Yongoru	442	509	Poroma HC	756	146	387	06.04.22	1	1	0	0	FM 90.7	Road
		Kolpereanda	180	276	Poroma HC	155	21	77	06.04.22	1	1	0	0	FM 90.7	Road/Trek
		Wombu	283	247	Poroma HC	411	100	217	04.04.22	1	1	0	0	FM 90.7	Road
		Yapapi	218	272	Poroma HC	400	50	198	06.04.22	1	1	0	0	FM 90.7	Road
		Om		238	Poroma HC	236	58	128	04.04.22	1	1	0	1	FM 90.7	Road
		Rakrem		207	Poroma HC	225	50	115	04.04.22	1	1	0	0	FM 90.7	Road/Trek
		Kambea		247	Poroma HC	92	14	50	04.04.22	1	1	0	0	FM 90.7	Road/Trek
		Wepea		275	Poroma HC	53	8	27	04.04.22	1	1	0	0	FM 90.7	Road/Trek
				NEW	Poroma HC	119	25	61	06.04.22	1	1	0	0	FM 90.7	Road/Trek new village
21	TOIWARO		3,056	5,467		4,868	748	2,385		10	10	0	0		
		Toiwaro	435	593	Taminda SHC	478	78	238	06.04.22	1	1	0	0		Road
		Rikin	202	461	Taminda SHC	429	93	211	06.04.22	1	1	0	0		Road
		Tukurupanda	605	930	Taminda SHC	731	76	351	06.04.22	1	1	0	0		Road
		Kambe/Kupulu	175	500	Taminda SHC	186	32	97	06.04.22	1	1	0	0		Road
		Kana	348	531	Taminda SHC	495	72	233	06.04.22	1	1	0	0		Road
		Ulira	490	543	Taminda SHC	815	139	401	06.04.22	1	1	0	0		Road
		Wasu	182	690	Taminda SHC	650	100	329	06.04.22	1	1	0	0		Road
		Rike	266	608	Taminda SHC	797	100	369	06.04.22	1	1	0	0		Road
		Rombakeanda	151	344	Taminda SHC	148	25	82	06.04.22	1	1	0	0		Road
		Yangira	202	269	Taminda SHC	139	33	74	06.04.22	1	1	0	0		Road
22	TAMENDA		1,126	1,627		1,595	283	849		7	7	0	0		
		Pokura	228	223	Taminda SHC	235	34	121	06.04.22	1	1	0	0		Road
		Wapolo	166	97	Taminda SHC	121	19	65	06.04.22	1	1	0	0		Trek
		Tamenda	127	105	Taminda SHC	141	20	75	06.04.22	1	1	0	0		Road
		Uria	166	621	Taminda SHC	433	83	233	05.04.22	1	1	0	0		Road
		Wanomondo	161	260	Taminda SHC	189	37	99	06.04.22	1	1	0	0		Road
		Wiriyawo	130	145	Taminda SHC	208	40	113	06.04.22	1	1	0	0		Road

LLG	WARD	VILLAGE	Estimated 2022 Population Based On 2000 Census	Estimated 2022 Population Based On 2019 Survey	Health Centre	Population Surveyed	House Holds Surveyed	Nets Issued	Date Of Distribution	Villages	Digicel	Bmobile	Houses With Radios	Radio Networks	Comments
		Palowa	149	176	Taminda SHC	268	50	143	06.04.22	1	1	0	0		Road
23	KUNJULU		1,781	3,287		3,495	708	1,735		11	11	0	0		
		Epuanda	259	274	Taminda SHC	221	50	122	06.04.22	1	1	0	0		Road/5 Hr Trek
		Kerepra	511	764	Taminda SHC	326	66	161	05.04.22	1	1	0	0		Road/5 Hr Trek
		Kembamra	295	589	Taminda SHC	380	76	187	05.04.22	1	1	0	0		Road/5 Hr Trek
		Pipre	170	468	Taminda SHC	488	99	245	05.04.22	1	1	0	0		Road/5 Hr Trek
		Rongompun	192	408	Taminda SHC	466	100	233	05.04.22	1	1	0	0		Road/5 Hr Trek
		Kplunda	173	525	Taminda SHC	484	100	236	06.04.22	1	1	0	0		Road/5 Hr Trek
		Uria	180	259	Taminda SHC	241	50	116	05.04.22	1	1	0	0		Road/5 Hr Trek
		Ipirim		NEW	Taminda SHC	268	50	127	06.04.22	1	1	0	0		Road/5 Hr Trek
		Tulupare		NEW	Taminda SHC	116	25	57	05.04.22	1	1	0	0		Road/5 Hr Trek
		Rakandia		NEW	Taminda SHC	229	42	116	06.04.22	1	1	0	0		Road/5 Hr Trek
		Ruta		NEW	Taminda SHC	276	50	135	05.04.22	1	1	0	0		Road/5 Hr Trek
KOMOI MAGARIMA				0											
HULIA RURAL			1,200	0											
11	HOMA		495	1,285											
		Homa	218	555	Inu HC										Road
		Tabiya	276	730	Inu HC										Road
13	HOMA	PAWA	706	897											
		Laita	281	378	Inu HC										Road
		Dibaga	317	256	Inu HC										Road
		Watersource	108	262	Inu HC										Road