

# ROTARIANS AGAINST MALARIA



## LONG LASTING INSECTICIDAL NET DISTRIBUTION REPORT

### WEST NEW BRITAIN PROVINCE Kandrian Gloucester and Talasea Districts

Carried Out In Conjunction With The Provincial Government And Church  
Health Services Of West New Britain Province

With Financial Support From The Global Fund

**01<sup>st</sup> February 2023 to 28<sup>th</sup> May 2023**



## Table of Contents

Executive Summary .....	3
Background.....	4
Schedule .....	7
Methodology.....	7
Results .....	11
Conclusions.....	13
Acknowledgements .....	15
Appendix One – History Of LLIN Distribution In PNG .....	15
Appendix Two – Malaria In West New Britain Province Compared With Other Provinces.....	20
Appendix Three - Malaria By Altitude .....	22
Appendix Four – Other Photographs .....	23
Annex One	Detailed Distribution Data For Kandrian Gloucester District
Annex Two	Detailed Distribution Data For Talasea District

## Executive Summary

West New Britain Province is one of two provinces on New Britain Island together with the islands of Bali Witu and Lolobau which are situated north east of the mainland of Papua New Guinea (PNG). While there are some mountains that rise above 2000m, the majority population live on the coastal areas below 400m where malaria is endemic with about 1% of the population living inland in areas 400-800m. About 67% of the province is accessible by road with the much of Kandrian Gloucester only being accessible by boat. At present, there is no direct road link between Kimbe the Provincial Capital and Kadrian which is the district capital of Kandrian Gloucester. For the rest of the population (0.2%) who cannot be reached by boat or vehicle they can only be reached by helicopter or trekking.

The family level survey and distribution of Long-Lasting Insecticidal Nets (LLINs) was carried out in West New Britain between 1<sup>st</sup> February, and due to security issues, only completed on the 28<sup>th</sup> May with some villages in Talasea still not receiving nets. However, most of the distribution took place within two months as planned with operations first starting in Kandrian Gloucester followed by Talasea.

Table One shows the estimated population to be covered by the program together with the actual population found along with the number of LLINs distributed by district. In total, 195,125 LLINs were distributed to a population of 397,573 people. This resulted in distribution of 49.1 nets for every 100 people in the province.

**TABLE ONE – Population And Nets Distributed**

District	Population from 2000 Census	Population Of Targeted Areas In 2019	Total Estimated Population 2023	Population Surveyed 2023	House Holds Surveyed 2023	Nets Issued 2023	Nets Distributed Per 100 People
Talasea	131,761	267,886	300,467	296,705	54,557	144,135	48.6
Kandrian	55,716	94,306	105,776	100,868	18,298	50,990	50.6
<b>Totals</b>	<b>187,477</b>	<b>362,192</b>	<b>406,243</b>	<b>397,573</b>	<b>72,855</b>	<b>195,125</b>	49.1

A further 2,250 LLINs were donated to health centres for use for antenatal nets or for use over beds in the health facility. Donations only occurred where there were a few loose nets left or it was difficult to return the nets to stores in Kimbe as was the case in Kandrian Gloucester and Bali Witu.

The overall operational cost of the programme was K592,353.07 Kina (Approximately US\$ 164,500) resulting in a cost of about 3.04 Kina or US\$0.84 per net delivered. This was about 21% over the anticipated budget with extra costs resulting from car hire and fuel costs being higher than expected due to delays caused by security issues. However, despite this, a per unit delivery cost of 3.04 Kina is very good by normal distribution standards.

Other than security issues discussed later, the overall distribution went well in West New Britain Province with excellent collaboration from provincial and district health authorities which resulted in all targeted communities being eventually reached and practically all household receiving nets with a few still waiting delivery due to security issues.

Feedback from partners and communities suggest they were happy with the methodology used as the process appeared transparent to all concerned. However, as always, there were a few families who complained that they did not receive enough nets but for the most part it is believed that this was a result of families not fully understanding the allocation system used.

Global Fund donated, supplied and covered all distribution costs for all the nets for West New Britain Province. The nets distributed in West New Britain Province were Magnet nets which came from India. This is the first time this type of net has been used in Papua New Guinea and RAM hopes that these are better quality LLINs than those distributed in the last few years.

The history of LLIN distribution in PNG and West New Britain Province is discussed in Appendix One and the malaria situation and stratification of malaria in West New Britain Province are discussed in Appendix Two and Appendix Three. Historically it can be said that LLINs have had a tremendous impact on malaria in Papua New Guinea but recent distributions in lower lying provinces have not resulted in decreased malaria except in the highlands of PNG where malaria appears to have been practically eliminated. We hope that these nets are sufficient to keep malaria at bay in all these areas of West New Britain for another three years.



**Fig.1 – Microplanning Meetings At Kaliai Health Centre (Left) And Map Drown Up Of Catchment Area To Assist In Planning (Right)**

## **Background**

Rotarians Against Malaria (RAM) is a nationally based organisation which was formed in 1997 by the Port Moresby Rotary Club in recognition of the tremendous burden that malaria imposes on the people of PNG.

RAM has an organizational mandate to work in malaria control and the distribution of LLINs in Papua New Guinea and has been working for many years with the National Department of Health (NDOH) and other partners including multilateral and bilateral agencies such as UNICEF and WHO (World Health Organisation), NGOs (Non-Governmental Organisations) and church groups. (See Appendix One for full history of LLIN Distribution)

Since 2010, RAM has been coordinating the distribution of nets to all districts and provinces on a three-year recurrent cycle. This effectively means that RAM visits every targeted village in PNG every three years. RAM has been funded by the Global Fund since 2009 and from 2017 to 2020 also from Against Malaria Foundation (AMF) which supplied PNG with the majority of its nets in 2017 and from 2018 onwards to all areas below 1600m only where most of the malaria transmission can be found. During the period 2017 to 2020, the Global Fund resources were therefore mainly used to fund the LLIN distribution costs and other relevant administration costs. However, in 2020, PNG was also lucky to receive a donation of net from the Chinese Government and these were used for all areas between 1600-2000m of altitude. It should also be noted that since 2015, the National Malaria Control Program no longer distributes nets in areas above 2000m as these altitudes are now considered too cold for malaria transmission to occur. The situation also changed in 2021. AMF no longer is a donor to PNG and all costs have now reverted to Global Fund. With this change, RAM started to

have difficulties covering areas from 1600-2000m but we are very fortunate in that the Global Fund allowed saving from 2020 to be used to procure nets for 2021 for this altitude. At present, the funding situation for LLIN distribution to altitudes of 1600-2000 after 2022 has stopped and it appears at this moment that all LLIN distributions in the future will be limited to below 1600m only.

Generally, LLINs have been distributed to household level throughout the country but when shortage of funds occurred, different strategies of distribution have been used as mentioned above.



**Fig.2 – Microplanning Meetings In Millimata (Left) And In Kilenge (Right)**

PNG can be roughly divided into five epidemiological zones.

- a) Areas which lie above 2000m in altitude which no longer receive LLINs as malaria transmission is not considered likely at these altitudes.
- b) Low lying areas of the country up to 1200m which have stable malaria endemicity and often have poor access to health continue to have household distributions.
- c) Areas from 1200 to 1600m which are generally considered to be of low transmission potential but traditionally have had occasional malaria epidemics due to poor immunity and changing weather conditions. LLIN distribution continue in these settings.
- d) Highlands regions between 1600 to 2000m in altitude such as Mount Hagen which have low malaria endemicity and generally easy access to health services. These are low priority areas and when funding is not available are left out. However, up until 2021, these areas have been covered. From 2015 to 2016, these areas received nets for Under Five children only, and since 2017 up until 2021, RAM has managed to find alternative sources to cover these areas. For example, in 2020, nets for these areas were sourced from a donation of the Chinese Government and in other areas from the Global Fund. Fortunately, there was sufficient funds to cover these areas in 2021. Sadly, from 2022 there are no funds to cover these areas nor likely to be for the foreseeable future.
- e) In urban and peri-urban areas such as Port Moresby which are low lying areas with easy access to health, nets will not be distributed during funding constraints. Nets to these areas will be supplied through the private sector. Similarly, due to funding constraints in 2015, Lae City had Under Five Campaign LLINs only.

As a result of this stratification and when funds had been reduced such as at the end of 2014, areas above 2000m no longer received nets and areas from 1600 to 2000m only received under five campaigns in 2015 and 2016. However, fortunately, due to the LLIN donation from the Against Malaria Foundation (AMF) in 2017, all areas received household distribution of nets except areas above 2000m, and some urban areas such as NCD, Goroka, Mount Hagen

and Mendi. After 2018, AMF only donated nets to areas below 1600m but the country has been lucky to find funding to fill this gap of between (1600-2000m) in 2019, 2020 and for 2021 through donations from the Global Fund (2018-2021) and the Chinese Government (2020). However, funding for areas between 1600-2000 metres has now stopped as the Global Fund allocations are not presently enough to cover these areas above 1600m.

One of the conditions of the AMF donation is that RAM would strengthen the way in which surveys are carried out. These new innovative processes are described in the Methodology Section. These methodologies are now being carried out since the beginning of 2017. The major change to the survey methodology suggested by AMF is that previously a village meeting was called after a survey was carried out where names of family members were read out to ensure that all households had been surveyed. Instead of this process, a summary of every village surveyed is posted for 24 hours in a public place so that villages can ensure that all their family members have been included in the survey. As a further verification process, members of RAM and local health staff team carry out random house surveys of 6% of households in every village to ensure that the survey process has been carried out correctly.

For household LLIN distributions, regardless of where they are carried out, they must include a survey and a distribution phase though implementation methods may considerably vary depending on specific circumstances. RAM's approach has been to concentrate on programme quality thus RAM develop methodologies that ensure that all recipients in an area actually receive nets and that this can be reported accurately.



**Fig.3 Survey Volunteer Training At Millimata (Left) and Sassavuro (Right)**

The other major change to the original PNG programme of 2004 to 2009 carried out by the NDOH is that nets are allocated to families on a needs basis rather than simply the number of people in the family. Data analysis of National Capital District (NCD) data has shown that this gives a ratio of nets needed to be about 47 for every 100 people. In the previous LLINs distribution of Round-3 in 2006 to 2010, nets were allocated at a rate of one net to every 2.5 people. With the programme only receiving 80% of LLIN needs, and most provinces distributing for example two nets to families of three, in practically every province, nets ran out before the end of the distribution. The RAM programme makes all attempts to assure that this distribution anomaly does not happen by collecting all population information at the beginning of the program and then allocate the nets based on family needs. This strategy is practiced to ensure that all families receive nets throughout any given province. The only scenario where survey and net distribution may be done simultaneously is in very remote locations where it is not practically possible to return a second time to a location. This is particularly the case in remote villages which can only be reached by boat or very long treks and it is costly and impractical to return to the villages for a second time.

In terms of coordination, RAM officers are allocated to specific LLGs or health centres where they coordinate the programme together with local health staff. In this capacity, RAM officers act as facilitators in terms of technical guidance to district health teams in each LLG as well as acting as financial officers and assuring quality control of activities taking place.

**Schedule**

**TABLE TWO**  
**General Timetable Of Activities In West New Britain Province**

District	Survey		Distribution	
	Start	Finish	Start	Finish
Talasea	01.03.23	18.05.23	05.03.23	28.05.23
Kandrian	01.02.23	16.03.23	04.02.23	20.03.23

Referring to Table Two, it can be seen that the main distribution in West New Britain Province started on 1 February 2023 in Kandrian Gloucester. As staff finished in Kandrian Gloucester the staff moved over to Talasea. Major delays were caused in the Bitokara areas and Kimbe Urban. After survey had been carried out, local disagreements, law and order related issues occurred which delayed distribution by some weeks. It should also be noted that the program also distributed nets in Muela which falls under East New Britain but is not accessible from East New Britain. This distribution is reported in the East New Britain report.

**Methodology**

Prior to planning and implementation, a master list of all villages of West New Britain Province was drawn up using data from the 2000 Census and the last RAM survey of 2019 in West New Britain Province. Villages in the list were organised by LLG and Ward. In this master list, the estimated population for 2020 for each village was estimated and recorded in two ways. Firstly, the population of each village is estimated using population figures from the 2000 Census and the estimated annual growth rate for West New Britain Province and then secondly, by taking the population surveyed in 2017 and 2018 and applying the annual growth rate to each village. In addition to this, based on altitude maps, all villages in highlands provinces are categorised and colour coded by altitude zones of below 1200m, 1200 to 1600 metres, 1600 to 2000 metres and lastly those villages above 2000 metres. Only those villages below 1600 metres will receive nets.

In all areas, Health Centres form the hub from which distribution takes place to the respective villages in each health centre’s catchment area. Therefore, with the planning data at hand, RAM staff work together with the Provincial Health Office to allocate every village to its nearest health centre (government or Church Based) and outlines how each village is reached from each health centre. From this it is possible to create a budget, estimate how many nets are needed to be sent to each health centre and work out any other logistic considerations such as use of airplanes or boats to deliver nets to some remote areas.

Once all logistical needs are calculated and nets delivered to the province or district, a RAM team will travel to the province. Once they are in the province, RAM officers are allocated to work with each health centre which becomes the centre of operations for that area.

With the arrival of RAM officers, each health facility identifies health staff members or non-health community volunteers to be involved with the programme. If local health staff are selected, then they are referred to as District Health Team (DHT) but if a non-health staff is selected then they are termed as a Team Leader. Both DHTs and Team Leaders are

responsible for the survey and distribution of nets. Each DHT and Team Leader works only in the area in which the health facility is based.

Before any activities take place, RAM officers are expected to work with health staff and other team leaders to make detailed plans (micro-planning) of their activities for training, survey, verification and distribution of nets. This process involves making maps of the area, deciding how many teams are needed, and then making detailed work plans for each of the team members. This process also involves verifying that no villages have been left out of the census list and that the whole area is covered.

Also prior to field activities in any given LLG or health centre, a social awareness campaign was carried out in all villages informing villagers of the upcoming survey and distribution. This was also used as an opportunity for RAM officers to become familiar with each area. During this process, key malaria messages were also discussed with villagers such as the need to use LLINs every night.

During the social awareness campaign, a daylong training meeting is normally held at each health facility for all DHT members in that area who jointly carry out the micro-planning exercise. These training and micro-planning sessions as well as all other activities associated with the programme are coordinated by RAM project officers together with health counterparts at provincial and district levels. RAM officers also have the responsibility to ensure the LLINs operation is kept in line with the original budget.



**Fig.4 – Training Village Survey Volunteers In Buvussi (Left) Muela (Right)**

## **Survey**

The survey was carried out in the following way.

- 1) When arriving at a village and before starting the census process, a meeting was held with village elders explaining the process.
- 2) If village elders have an up-to-date list of all village occupants, the team would use this list to compile a census but still visit every household to confirm this information.
- 3) Where a village is small, e.g., less than 30 families, team members may carry out the census by themselves.
- 4) Where villages are large, village volunteers were identified with the assistance of the village chiefs, elders, health staff and councillors. One volunteer was chosen for each group of about 50 families with volunteers chosen by natural divisions in the village e.g., clans where one volunteer would make a list of only one clan. These volunteers were trained to carry out the survey by actually surveying houses with the team leaders supervising and assessing the recording. Once the team leader was confident that the volunteers knew the

survey methodology, they were left to continue with the household survey with survey teams returning within an agreed period to verify the work of the survey volunteers, collect survey books and also to pay the survey volunteer, provided that the work was carried out correctly. The training of volunteers may occur in groups or individually depending on access to the village and its proximity to other villages.

- 5) For each household surveyed, all family members who normally reside at the household for a minimum of nine months were recorded by Name, Age, Sex and Relationship to head of household. All names and other information were recorded in the survey book with one survey form being used for each household.
- 6) After surveying a household, a white copy of the census form was given to the head of household or most senior person present in the household.
- 7) Where a whole household was absent, information was taken from the neighbours and the white survey form left with them.
- 8) In all cases, after the census/list was finished, all the information about the households and number of household members is entered into a summary sheet. This list is then hung in a public place where all villages can verify that the right number of family members for each household has been recorded and that all families have been included in the survey. After the list has been in a public place for 24 hours, then the volunteer requests for the RAM officer and or DHT to visit the village.
- 9) RAM officers and DHTs must visit three households randomly from each survey book (6%) and verify that the survey has been carried out correctly. Only when this has been done, then the volunteer can be paid.
- 10) If a village was surveyed by more than one volunteer, then volunteers were asked to work together so that lists can be hung together and the village volunteers can be verified at the same time. This process also ensures that households do not appear on more than one list. After this process, both the volunteers and the village elders sign a form to verify that this was done.
- 11) All village volunteers received a standard payment of 20 kina a day. Experience has shown that volunteers can usually only survey about 25 households a day, so for the most part, they would receive up to two days' allowance to complete a survey book (50 households).
- 12) All volunteers were also given a small training manual. Contained in this training manual are key health education messages about malaria which volunteers are expected to discuss with households. This perhaps is the only project in PNG that is able to reach down to potentially every household in the country.

To aid with the survey, the master plan with names of all census units in all the wards in the district had been printed out and given to all the DHTs and team leaders. This document also provides the projected population per census unit as well as other information which might be useful to the area concerned.

After collecting survey data from each village, the information is immediately compared with the data on the master sheet. Where the surveyed population is very different from the projected population, the project staff make enquiries into the reasons for these discrepancies.

Following the survey, all data was entered into a computer where possible or entered into a master sheet of the area concerned. For each village, nets were allocated to each family on a needs basis and this is also entered into the computer or master sheet. This process ensured that all villages received nets and that there would be no shortfalls.

The needs basis in PNG is based on the assumption that children under the age of six sleep with their parents, after which boys and girls are grouped separately from their parents. Nets are also allocated based on the number of children in the house, their ages, and whether there are other dependents living in the households such as grandparents. A full description of the allocation system can be obtained from RAM officers but suffice to say a family of four could receive between one to four nets depending on the sex and age of family members.

Nets are allocated to each LLG based on assumed populations of each LLG and it was important prior to the distribution to ensure that when allocations had been carried out to families and villages that there were enough nets available to cover each and every family.



**Fig.5 – Village Verification In Amio – Resident Being Questioned To Verify They Have Been Surveyed (Left) And Survey Summary Put Up In Public Place To Verify Inclusion Of Households (Right)**

### ***Distribution***

There was no official launch for the LLINs distribution in West New Britain Province. However, prior to distribution there was a social awareness phase where the project teams informed communities about the arrival of the distribution teams, especially those accessible by road.

The LLINs were then distributed to teams depending on the needs of each village. The LLINs were then distributed by village or wards depending on whether villages were close together. In this latter case, a central location was identified in the ward and then distribution of nets was carried out. In terms of distribution sites, villages were organised in different ways to make the flow of nets easy and effective. However, the actual organisation depended on each team and the structure of the various groups receiving nets.

All net packaging was opened at distribution site with a district code printed on each net e.g., WNB22 meaning West New Britain Province 2022. This code is added to identify nets to assist in future monitoring exercises as well as discouraging householders from selling the nets on the open market.

Some examples of the process used to control the crowd includes;

- Arranging the people according to the serial numbers in the survey books e.g., 72001 - 72050 and then calling the names and the serial numbers.
- Call the names of the owners of the households, collect the white copy and give the nets.
- Wait for everyone to come to the distribution site, collect all the white copies and sort the copies with the pink copies. Call the names on the white copies and give the nets.

Some of the following control methods were used.

- Everyone who presented with a white copy was given LLINs at the distribution site with LLINs only given to the owner of the house or a member of the house whose name is written on the back of the survey form.

- Those people who lost the white receipts were left to the end of each distribution, with nets only being issued if the name of the person collecting the nets was found on the back of the pink copies.
- For those families who were absent at the time of distribution, their names were written in a form – MOSQUITO NETS HELD IN TRUST BY VILLAGE CHIEFS FORM and the nets allocated to missing families were given to chiefs or any person entrusted by the community with the forms for these families to collect their LLINs later.
- Householders are now being asked to make a thumb print as proof of delivery of nets to a household. The Global Fund had formally asked that householders should sign for delivery of nets. This was considered problematic as many householders are illiterate and even where householders can write, this process takes a long time in what is often a very chaotic and charged environment where speed is of the essence.

It should also be noted that surveys and distributions took place at more or less the same time in some remote places of West New Britain Province. This is particularly true for mountainous villages or villages at the end of rivers which might take several hours or days to reach. In these instances, estimations based on the 2000 Census data and local knowledge used to pre-allocate nets. Teams were then dispatched to these areas with nets. On arrival in these remote places, surveys took place and were immediately followed by a distribution based on the survey results.

### **Other details**

In the case of West New Britain Province, all LLINs were ultimately delivered to Lae by ship from India in eighteen containers. These nets are known as Magnet and are light blue in colour and made from polyethylene. All nets arriving in Lae were custom cleared by Express Freight Management and then stored primarily in their premises in Lae. After this, containers were moved to West New Britain by Consort Shipping and then stored at the Kimbe Hospital until the RAM teams arrived Hospital. From the containers the nets were moved to the various health facilities in the province by road, boat or by dinghy. In the case of Bialla, two of the containers were moved to Bialla Health Centre and a further two to Lalopo Health Centre. For Kandrian Gloucester, a big boat was hired to deliver all the nets to all the locations on the coast not accessible by road.

## **Results**

Table Three shows the LLIN distribution data by district and Table Four by Local Level Government (LLG). These tables give the actual population surveyed together with the number of LLINs distributed by district. In total, 195,125 LLINs were distributed to a population of 397,573 people in the two districts. This resulted in distribution of 49.1 nets for every 100 people in the province.

**TABLE THREE**  
**Nets Distributed At District Level In West New Britain Province**

District	Population from 2000 Census	Population Of Targeted Areas In 2019	Total Estimated Population 2023	Population Surveyed 2023	House Holds Surveyed 2023	Nets Issued 2023	Nets Distributed Per 100 People	Growth Rate Against 2019 Survey
Talasea	131,761	267,886	300,467	296,705	54,557	144,135	48.6	3.46
Kandrian	55,716	94,306	105,776	100,868	18,298	50,990	50.6	2.27
<b>Totals</b>	<b>187,477</b>	<b>362,192</b>	<b>406,243</b>	<b>397,573</b>	<b>72,855</b>	<b>195,125</b>	49.1	3.16

Referring to Table Three and Table Four, it can be seen that the overall population growth rate is roughly 3.2% though for Kandrian Gloucester is 2.3% which suggests some urban migration into Talasea. Looking at Table Four, this suggests that the population of Kimbe has reduced while Mosa has increased by 8%. Growth in Kimbe appears to have reduced, but security in the Kimbe urban area was very poor and it is not certain if all areas were covered as well as they should have been. All these figures seem to suggest that some of the population is moving into the Oil Palm areas of Bialla and Mosa. The high growth rate seen in these areas is also reflected in past years where West New Britain has had one of the highest growth rates in the country which may also be a result of immigration of people into the province.

**TABLE FOUR**  
**Nets Distributed At LLG Level In West New Britain Province**

LLG	District	Population from 2000 Census	Population Of Targeted Areas In 2019	Total Estimated Population 2023	Population Surveyed 2023	House Holds Surveyed 2023	Nets Issued 2023	Growth Rate Against 2019 Survey	Nets Distributed Per 100 People
Biala Rural	Talasea	36,188	78,536	88,088	90,380	17,377	44,502	4.79	49.2
Bali/Witu Rural	Talasea	13,734	20,078	22,520	22,338	4,270	11,217	3.62	50.2
Hoskins Rural	Talasea	19,327	35,983	40,359	37,535	6,259	18,162	1.42	48.4
Kimbe Urban	Talasea	14,184	25,065	28,113	24,275	4,246	11,766	-1.06	48.5
Mosa Rural	Talasea	24,837	47,201	52,942	60,095	9,805	27,547	8.38	45.8
Talasea Rural	Talasea	20,522	57,690	64,706	62,082	12,600	30,941	2.48	49.8
Gasmata Rural	Kandrian	9,012	13,214	14,821	15,323	2,663	7,312	5.06	47.7
Gloucester Rural	Kandrian	9,303	16,078	18,033	16,720	3,658	8,646	1.31	51.7
Kandrian Coastal Rural	Kandrian	12,596	19,686	22,080	20,035	3,544	10,348	0.59	51.6
Kandrian Inland Rural	Kandrian	10,014	19,780	22,186	19,780	3,591	10,033	0.00	50.7
Kove/Kaliai Rural	Kandrian	14,791	25,548	28,655	29,010	4,842	14,651	4.33	50.5
Totals		<b>184,508</b>	<b>358,859</b>	<b>402,504</b>	<b>397,573</b>	<b>72,855</b>	<b>195,125</b>	<b>3.47</b>	<b>49.1</b>

**TABLE FIVE**  
**Nets Donated To Health Centres**

District	LLG	HC	Donated
Talasea	Biala Rural	Lalopo HC	31
	Bali/Witu Rural	Unea HC	33
Kandrian	Gasmata Rural	Gasmata HC	98
	Gloucester Rural	Sagsag HC	21
	Gloucester Rural	Kilenga HC	62
	Gloucester Rural	Gloucester HC	206
	Kandrian Coastal Rural	Kandrian HC	450
	Kandrian Coastal Rural	Sauren HC	20
	Kandrian Coastal Rural	Piilo HC	229
	Kandrian Inland Rural	Kandrian HC	1,050
	Kove/Kaliai Rural	Kaliai HC	50
TOTAL			2,250

Referring to Table Five, a further 2,250 LLINs were donated to health centres for use for antenatal nets or for use over beds in the health facility. Donations only occurred where there were a few loose nets left or it was difficult to return the nets to stores in Kimbe. As this program occurred in locations in remote areas of Kandrian Gloucester and Bali Witu, more nets were left than normal. The excess nets left over in Kandrian Gloucester is also a reflection of the reduced population growth particularly seen in both Kandrian Coastal and Kandrian Inland areas.

Referring to Table Six, it can be seen that the overall operational cost of the programme was K592,353.07 Kina (Approximately US\$ 164,500) resulting in a cost of about 3.04 Kina or US\$0.84 per net delivered. This was about 21% over the anticipated budget with extra costs

resulting from car hire and fuel costs being higher than expected due to delays caused by security issues. However, despite this, a per unit delivery cost of 3.04 Kina is very good by normal distribution standards.

**TABLE SIX**  
**Cost Of Programme In West New Britain Province (All Costs in Kina)**

Expense Types	Budget	Actual	Variances	% Variances
	K174,361.08	K197,062.14	-22,701.06	-13.0
Fuel Cost	K40,202.00	K77,600.27	-37,398.27	-93.0
Car Hire Cost	K157,500.00	K180,080.00	-22,580.00	-14.3
Boat Hire Cost	K91,200.00	K111,970.00	-20,770.00	-22.8
Aircraft Hire Cost	K0.00	K17,960.00	-17,960.00	0.0
Stationeries/Supplies	K3,000.00	K1,691.68	1,308.32	56.4
5% Contingency	K23,313.15	K5,988.98	17,324.17	25.7
Totals	K489,576.24	K592,353.07	-102,776.83	-21.0

Referring to Table Seven, this shows the radio and cell phone coverage for West New Britain Province. It is good to see that the coverage of both Digicel and Bmobile has increase a lot since 2019 particularly in Kandrian Gloucester District and the area covered is less than one might expect but it is greater than three years ago. Overall, this shows an improvement in communication in the province but still 15% of villages still don't have access to a cell network and 44% still don't have access to a radio station. This makes health messaging communication in these areas very difficult.

**TABLE SEVEN**  
**Cell and Radio Coverage In West New Britain Province**

District	Villages	House Holds Surveyed	Digicel	Bmobile	Houses with Radios	Villages With Radio Networks
Talasea	445	54,557	429	180	15,054	308
Kandrian	334	18,298	239	45	2,881	130
<b>Total</b>	<b>779</b>	<b>72,855</b>	<b>668</b>	<b>225</b>	<b>17,935</b>	<b>438</b>



**Fig.6 – Household Survey Verification In Buvussi (Left) Together With Household Summary On Public Display In Kimbe (Right)**

## Conclusions

Overall, it can be said that the LLIN distribution in West New Britain Province was generally a huge success both in terms of results and great collaboration between staff from RAM, provincial and district health authorities, and the Catholic and United Church Health Services who have a presence in the areas receiving nets. Through this collaboration, the data suggests that all villages were reached and practically all families in those villages received nets despite any local challenges.

There were some challenges which included the following:

- The major challenge throughout this distribution was Law and Order issues that affected and delayed the operations as officers had to take extra precautions in completing their work. Despite taking extra precautions the following issues were encountered;
  - Hold up of two female RAM officers at Kandrian with attempted rape and loss of personnel belongings and project funds
  - Attempted robbery of RAM officer towards the end of distribution phase at Pililo Health Centre ignited frustration which resulted in a tension between the officer and the accused local person. The RAM officer had to leave some nets with funds with the officer in charge to complete the distribution as the situation was tense.
  - Hold up of RAM officers in Kimbe in their rented accommodation which lead to loss of personnel belongings and the team moving over to another location in Mosa where they also experienced a further attempt of burglary during the night and eventually, they had to move to a lodge for safety.
  - Some villages under Bitokara Health Centre catchment area are still pending distribution due to ongoing law and order issues. Bitokara and Bola Health Centres are known as a hotspot area for high crime rate. The nets were handed over to the officer in Charge to do distribution once the situation settles
  - Officers doing Kimbe Urban, Bitokara, Bola and Bialla had to take longer to complete their areas due to continuous disruption during distributions. Also, in Kimbe, town, distributions were suspended during weekends due to law and order issues including drunkards.
- Hire of vehicles from Kimbe to Kandrian was very challenging as local companies and owners would not allow their cars to be rented for less than 1000 Kina per day. RAM was very fortunate to have a company willing to rent their vehicles for the same rates as RAM recommended rates which are much lower than 1000 Kina a day.
- Bad weather, strong wind and heavy rainfall (wet climate) also caused delay in survey and distributions. Additional fuel was also needed for coastal areas due strong wind and rough seas which increased fuel costs.

On the positive side, we can say that there was good excellent collaboration between all health staff and RAM. Also, importantly, the PHA staff were supportive in checking the RAM team daily and having weekly meeting discussing tentative plans to avoid the ongoing law and order issues in the province.

More importantly, despite the challenges faced, officers together with the health colleagues, managed to complete their operations successfully with the exception of the Bitokara area where hopefully all householder will also receive their nets in the near future.

## Acknowledgements

On behalf of the Rotarians Against Malaria household distribution team who worked in Talasea and Kandrian Gloucester districts, we would like to sincerely acknowledge and thank the West New Britain Health Authority and the District Health Staff of the two districts for the excellent help and cooperation during the Long Lasting Insecticide Nets (LLINs) distribution programme.

In particular, we would like to thank at provincial level Mr Stanislaw Tao (Chief Executive Officer) and his team with special thanks to Dr Joseph Nale (Director Public Health), Mr Chris Ulka (Deputy Director Public Health), Mrs Wendy Houinei (Deputy Director-Standards & Program), Mrs Astrid Midan (Deputy Director-Health Facilities) and Mr Fendick Arebo (Provincial Malaria Supervisor).

For the district staff, we would like to sincerely thank all those who tirelessly took part in the programme, and in particular we would like to mention the following people who were instrumental in providing the local expertise and advice from planning to implementation of the programme in the two districts namely:

### Talasea District

Name	Occupation	Institution
Mrs. Hedwig Piagan	Community Health Worker	Kimbe Urban Clinic
Mrs. Janet Pileng	Community Health Worker	Kimbe Urban Clinic
Mrs. Roselyn Gumboli	Community Health Worker	Kimbe Urban Clinic
Mr. Joseph Goloki	Community Health Worker	Kimbe Urban Clinic
Mr. Tintau Tingetau	Officer in Charge	Navo Health Centre
Mr. James Kosikien	Nursing Officer	Ulamona Health Centre
Sr. Eunice	Sister in Charge	Ulamona Health Centre
Mr. Jeffery	Health Extension Officer	Bialla Health Centre
Mr. Bruno Pake	Officer in Charge	Bitokara Health Centre
Sr. Mary Dende	Nursing Officer	Bitokara Health Centre
Mr. Michael Sebgum	Nursing Officer	Buvussi Health Centre
Mr. Albert	Community Health Worker	Galai 2 Aid Post
Mr. John Tetaliu	Community Health Worker	Gaongo Aid Post
Mr. Herman Buluai	Community Health Worker	Tamba Aid Post
Mrs. Rita Siape	Community Health Worker	Saralok Aid Post
Mr. Luias Sariking	Community Health Worker	Mingae Aid Post
Mr. Oscar Talia	Nursing Officer	Lalopo Health Centre
Mr. Karl Felix	Community Health Worker	Silanga Health Centre
Mr. Modo Kodo	Officer in Charge	Valoka Health Centre
Miss. Konera Bego	Officer in Charge	Malalia Health Centre
Mr. Justine Naguru	Community Health Worker	Malalia Health Centre
Mr. Chris Tabakua	Community Health Worker	Paruru Health Centre
Mr. Maserus Vatican	Health Extension Officer	Unea Health Centre
Sr. Lorraine Maiosi	Officer in Charge	Unea Health Centre

### Kandrian Gloucester District

Name	Occupation	Institution
Mr. Ezekiel Wiawe	District Health Manager	Kandrian District
Mr. Jeffery Sioma	Community Health Worker	Kandrian Health Centre
Mr. Steven Kadiko	Community Health Worker	Turuk Health Centre
Mr Martin Mons	Community Health Worker	Amio Health Centre
Miss. Martha Puak	Sister in Charge	Kaliai Health Centre
Mr. Luke Bambai	Community Health Worker	Kaliai Health Centre
Mr. Solomon Oga	Community Health Worker	Kaliai Health Centre
Mr. Morris Aemre	Community Health Worker	Aria Aid Post
Mr. Patrick Silio	Nursing Officer	Gasmata Health Centre

Mr. Mathew S	Chairman	Gasmata Health Centre
Mr. Alex Umil	Chairman	Melengelo Health Centre
Miss. Annemarie Ansi	Sister in Charge	Sauren Health Centre
Miss. Fainny Bepi	Sister in Charge	Pililo Health Centre
Mrs. Norma Tavul	Health Extension Officer	Milimata Health Centre
Mrs. Agnes Mara	Community Health Worker	Milimata Health Centre
Mrs. Celestine Pipi	Sister in Charge	Milimata Health Centre
Mrs. Maggie Michael	Community Health Worker	Milimata Health Centre
Mrs. Theresia Mohe	Sister in Charge	Sasavoru Health Centre
Sr. Cathy Vute	Sister in Charge	Kilenge Health Centre
Mr. Vincent Divu	Community Health Centre	Kilenge Health Centre
Mr. Godfrey Vaili	Community Health Centre	Kilenge Health Centre
Mr. Bathimius Hoem	Officer in Charge	Sagsag Health Centre
Mr. Danis Dolega	Community Health Centre	Sagsag Health Centre
Mr. Opi Yapi	Health Extension Officer	Eseli Health Centre

RAM would like to specially acknowledge the support received from established and local service providers for logistical support namely; Consort Shipping for Transporting 18 containers from Lae to Kimbe Provincial Public Health Authority yard of which two were further transported by East West Transport Limited to Lalopo Health Centre yard and another two to Bialla Health Centre yard. RAM also thanks Kivia & Sons for further delivery of nets and fuel drums with officers from Kimbe to various coastal health facilities in Kandrian district and Bali/Witu Island in Talasea district with their boat MV Avara. RAM also acknowledges and thanks Niugini Helicopter for delivering nets and officers to the five villages in Ward 5 of Mosa LLG under Buvusi HC. Five officers were dropped off in the five villages and picked up two days later and brought back to Kimbe.

RAM would also like to thank Country Tours Hire Cars and all the local hire car owners and local boat owners, for allowing their cars to be used for this operation. We would not have reached many communities without the dedication of the drivers and dingy operators.

RAM would like to also thank Mande Service Station, West Energy Supplies and Puma Energy for supplying bulk fuel for the operation.

RAM also thanks all the church run health facilities coordinated under Catholic Church, United Church (UC), Anglican Church and lastly to all the Government run facilities for allowing their staff to work with the RAM team.

Last but not the least, RAM would like to extend our acknowledgement and appreciation to all the hard working volunteers and local community leaders for ensuring all homes were surveyed and assisting in distributing all the nets. RAM thanks you all very much for your hard work, support and local expertise in making the overall program a success.

## Appendix One – History Of LLIN Distribution In PNG

The use of Insecticide Treated Nets (ITNs) started in PNG in 1985 when the PNG Institute of Medical Research (IMR) conducted one of the first trials demonstrating the health impact of treating mosquito nets with insecticide. The study, done near Madang, showed a reduction of *P. falciparum* incidence and prevalence in children below five years of age sleeping under permethrin-treated nets. The protective effect of insecticide-treated nets (ITNs) was also confirmed in many other trials around the world. As a consequence of such findings, the national malaria control program in PNG started emphasizing the use of ITNs in 1989. However, no regular or large-scale distribution of ITNs was carried out at this time.

In the following years, coverage with mosquito nets and other control interventions remained patchy and low in many parts of PNG. It was during this period that Rotarians Against Malaria (RAM) was created from the Port Moresby Rotary Club in 1997. Using a donation of 150,000 treated nets given to them from the National Department of Health (originally from AusAid), RAM successfully ran a revolving fund of nets in which nets were sold at a price which allowed the proceeds to buy more nets. RAM did this successfully for many years distributing about 45,000 treated nets a year from 2000 to 2004.

Prior to 2004, most treated nets had to be re-treated every six months or a year which requires a lot of work and organisation. In early 2004 everything changed with the introduction of Long-Lasting Insecticidal Nets (LLINs) which would last for 20 washes and effectively no longer required to be treated repeatedly. This change in nets also coincided with the introduction of the Global Fund into PNG known as the Global Fund Round 3.

From 2005 to 2009 the malaria programme in PNG received and delivered about 2.3 million nets throughout the country at a rate of one net for every 2.5 people. The delivery of nets to village level was under the provincial health authorities and reached most parts of the country with Rotarians Against Malaria (RAM) being responsible in delivering the containers of nets to the provinces from Port Moresby and Lae where the nets arrived from overseas.

While the programme was very successful in some areas it was not so successful in others. Problems included slow release of funds from central to provincial level, some provinces not following technical guidelines given resulting in some areas not been covered, and technical and financial reporting leaving a lot to be desired in many of the provinces. When further funds became available in what is known as the Global Fund Round Eight, it was decided that Rotarians Against Malaria (RAM) would take over the coordination of the LLIN programme under the supervision of the National Malaria Control Program.

This change has resulted in RAM being responsible for the overall coordination of the LLIN distribution of LLINs in the country particularly in the areas of quantification, procurement, reporting and delivery to provincial and district level. However, the actual delivery of nets to village level is a collaboration between RAM, provincial health authorities and district health and health centre staff.

Fig.1 shows the distribution of nets to districts and provinces from 2006 to 2009 while Fig.2 shows the distribution of nets from 2010 to 2014 and Fig.3 shows the distribution from 2015 to 2017 which includes under five distributions in 2016 and 2017. Under Five distributions had been carried out in areas above 1600m and in Port Moresby and Lae City due to lack of funds. This situation changed when support from Against Malaria Foundation was received.

Up until June 2022, a total of 14.7 million LLINs had been distributed to household level under the coordination of RAM. Therefore, with the 2.5 million nets distributed from 2006 to 2009, this means that about 17.2 million nets have been delivered to household level in PNG since 2006. This is more than one net per every person in PNG. RAM has also distributed about

another 1.5 million nets to health centres for distribution to pregnant women and for prisons and boarding schools.

It should also be noted that alongside developments related to treated mosquito nets, the first cases of chloroquine-resistant malaria were reported in 1976. This progressed rapidly to widespread resistance of *P. falciparum*, and to a slightly lesser extent *P. vivax*, to chloroquine, amodiaquine and sulphadoxine-pyrimethamine (SP). In studies conducted between 2003 and 2005, even combination regimens of these drugs faced up to 29% resistance of *P. falciparum*<sup>2</sup>. This situation together with Global Fund Round 8 also saw the introduction of artemether lumefantrine branded as Malawan and IPT (Intermittent Preventative Treatment) for antenatal women using Fansidar (Pyrimethamine Dapsone).

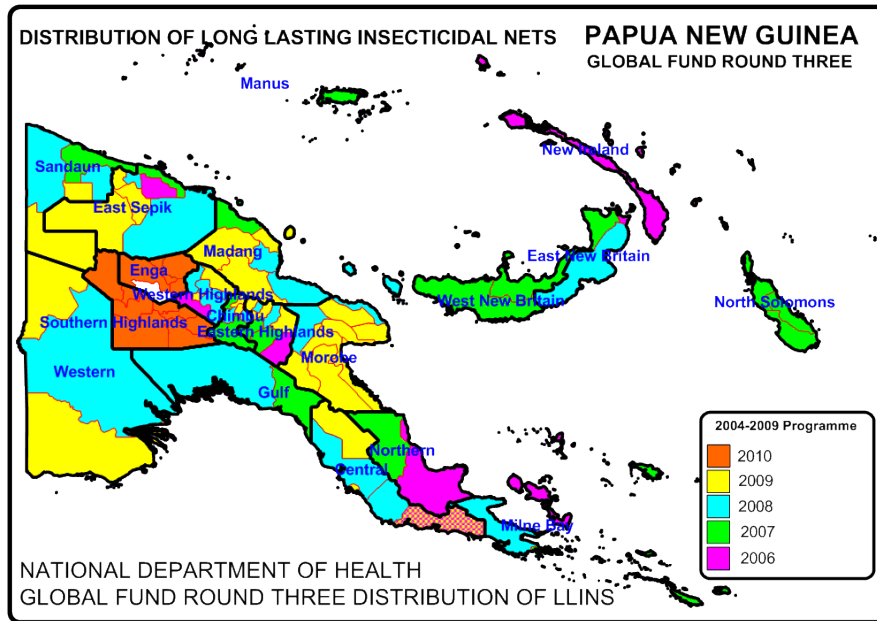


Fig. 1 Distribution Of Nets Under National Department Of Health From 2006 To 2010

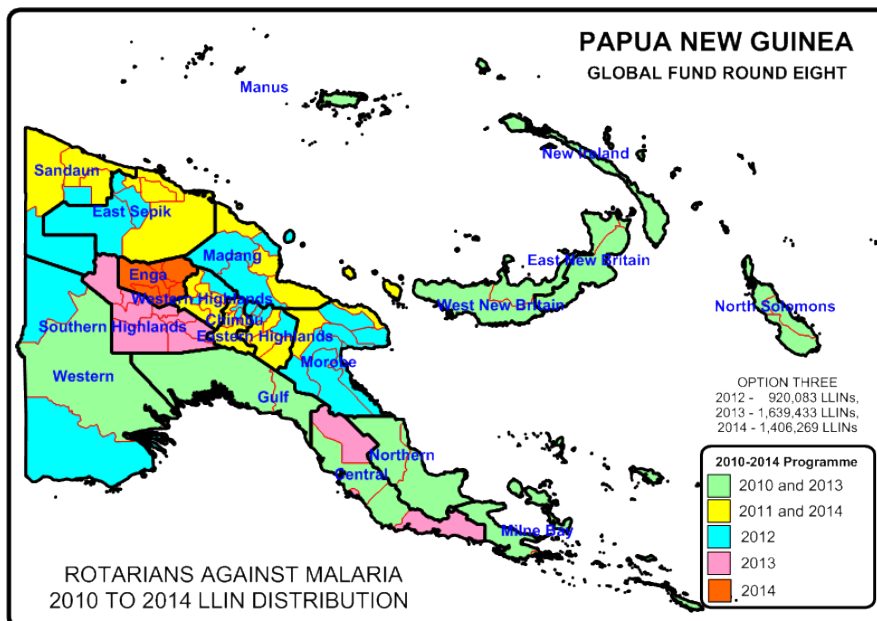


Fig.2 Distribution of LLIN Programme 2010 to 2014

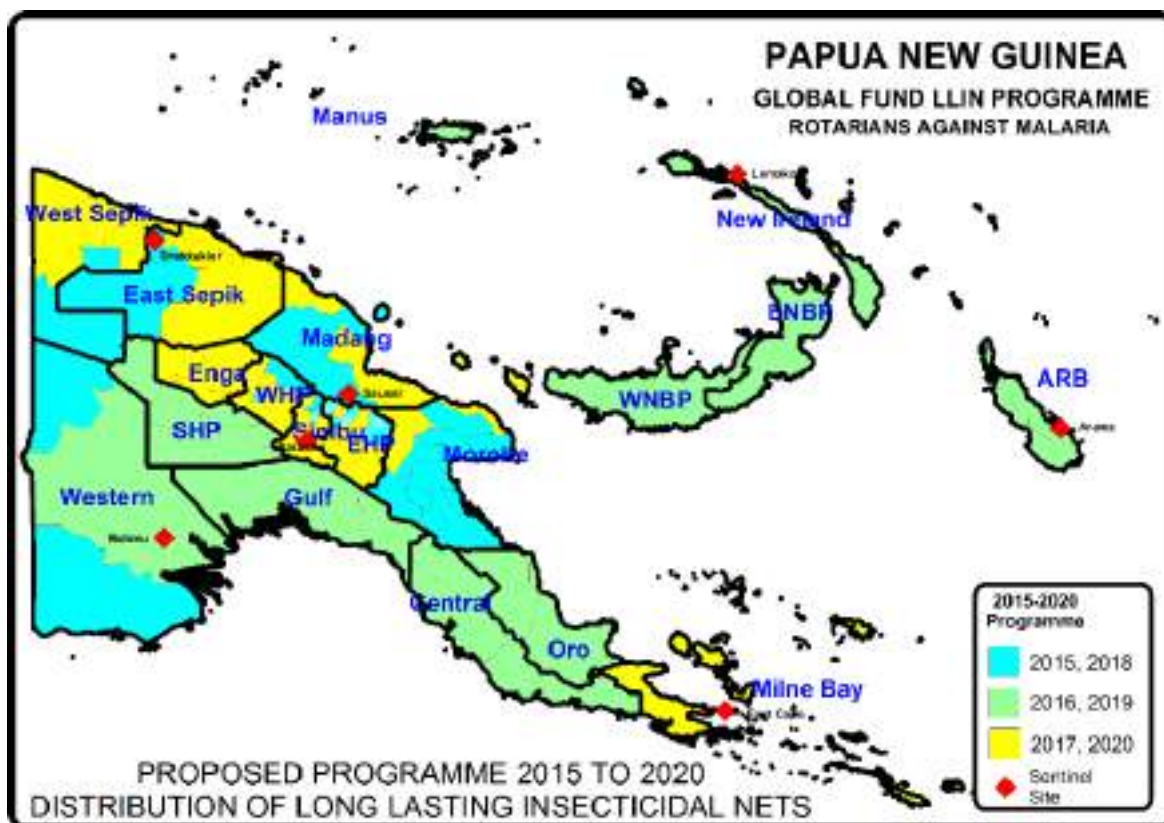


Fig.3 LLIN Distribution Programme 2015 to 2020

**TABLE ONE - LLINs Delivered In PNG Under Coordination Of RAM From 2010**

Period	Dates	Districts	Provinces	Nets Delivered	Type Of Net Delivered
Phase One (2010-2011)	Nov 09 - Oct 11	50 Districts	18 Provinces	1,890,448	Permanet 2
Year 3 (2012)	Nov 11 - Sep 12	27 Districts	10 Provinces	832,671	Permanet 2
Year 4 (2013)	Oct 12 - Sep 13	28 Districts	12 Provinces	1,210,391	Permanet 2
Year 5 (2014)	Oct 13 - Sep 14	23 Districts	11 Provinces	1,374,791	Permanet 2
Year 5 (2014) No Cost Extension	Oct 14 - Dec 14	Okapa, Lufa, Madang, Angoram, Maprik, Yangoru Saussi, Wewak, Aitape Lumi, Nuku and Vanimo Green	EHP, Madang, East Sepik and Sandaun	454,806	Permanet 2
Year 6 (2015)	Jan - Dec 2015	29 Districts	11 Provinces	932,822	Permanet 2
Year 7 (2016)	Jan - Dec 2016	27 Districts	13 Provinces	805,597	Permanet 2
Year 8 (2017)	Jan - Dec 2017	36 Districts	13 Provinces	1,543,947	Permanet 2
Year 9 (2018)	Jan - Dec 2018	27 Districts	11 Provinces	1,211,922	Permanet 2
Year 10 (2019)	Jan - Dec 2019	26 Districts	12 Provinces	1,266,525	Permanet 2
Year 11 (2020)	Jan - Dec 2020	28 Districts	13 Provinces	1,495,368	Safenet, Interceptor, Yorkool and Royal Sentry
Year 12 (2021)	Jan - Dec 2021	30 Districts	9 Provinces	1,301,456	Yahe
Year 13 (2022)	Jan- Mar 2022	North and South Fly, Telefomin, Kairuku	Western, Sandaun, Central	164,212	Magnet, Yahe
	Apr - Jun 2022	Rigo, Kairuku Hiri, Gollala, Koroba Kopiago, Komo Magarima, Nipa, Kagua Erave, Ialibu Pangia, Kerema	Southern Highlands, Hela, Central, Gulf	242,948	Magnet, Yorkool
	Jul - Sep 2022	Kairuku, Kikori, Middle Fly, Sohe, Ijviati, Manus	Gulf, Western, Oro, Manus	290,096	Yahe, Magnet
	Oct - Dec 2022	Manus, Kavieng, Namatania, North Bougainville, Central Bougainville, and South Bougainville	Manus, New Ireland, ARoB	255,270	Magnet
New Funding Model (2015-2021)				9,510,163	
Round Eight (2010 - 2014)				5,763,107	
Overall Total Phase One and Phase Two And NFM				15,273,270	

## Appendix Two – Malaria In West New Britain Province Compared With Other Provinces

Fig.1 shows the decrease of malaria from 2007 to 2015 in all provinces, Fig. 2 shows the actual malaria incidence in 2020 compared with other provinces and Fig.3 shows annual malaria trends from 2010 to 2022. In West New Britain Province, it can be seen from Fig.1 that malaria decreased from 2007 to 2015 by 31% which is a similar reduction to Sandaun Province. In Fig.2, in 2020 it can also be seen that in West New Britain Province the malaria incidence is 195 per 1000 which was a relatively low incidences for a coastal province and compared very closely with Oro Province. Fig. 3 and Fig.4 show the malaria incidence by year with Fig.4 showing malaria incidence compared with net distributions in West New Britain Province. It can be noted that in general, LLIN distributions in 2010 and 20213 had a massive impact on malaria but other distributions from 2013 onwards resulted in some initial decreases of malaria which soon resulted in malaria going up again. This is believed to be because of changes to the LLINs PNG received after 2012 which resulted in the nets no longer working as they did in the past. It can only be hoped that the nets distributed in 2022 have a better impact than those of recent years.

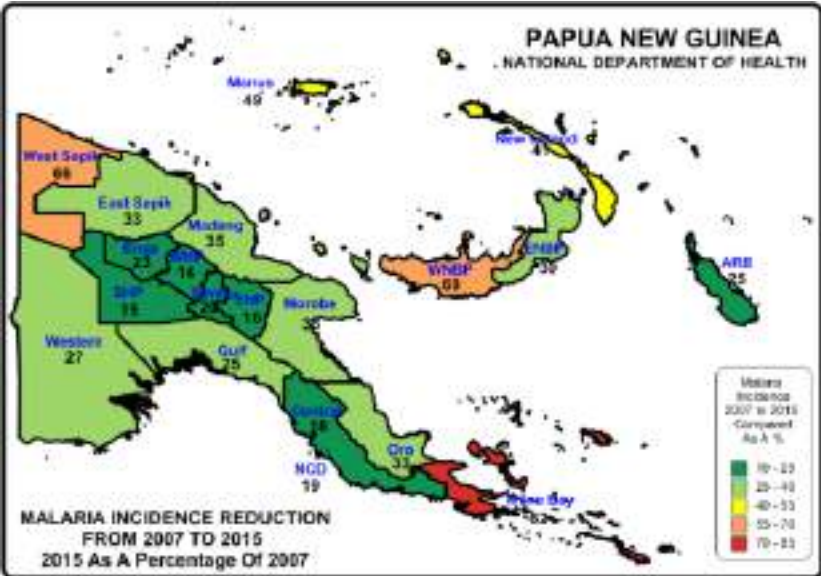


Fig.1 – Relative Reduction Of Malaria In Provinces Of PNG

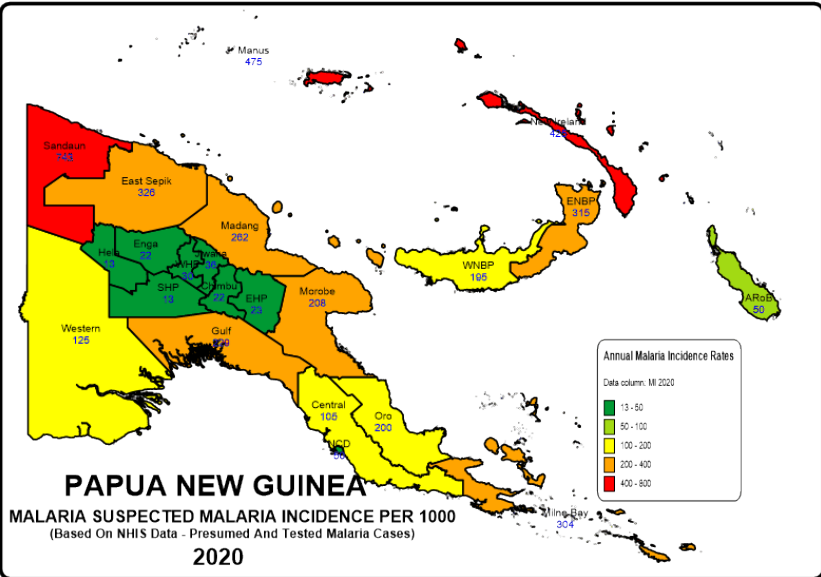


Fig.2 – Reported Malaria Incidence In 2020

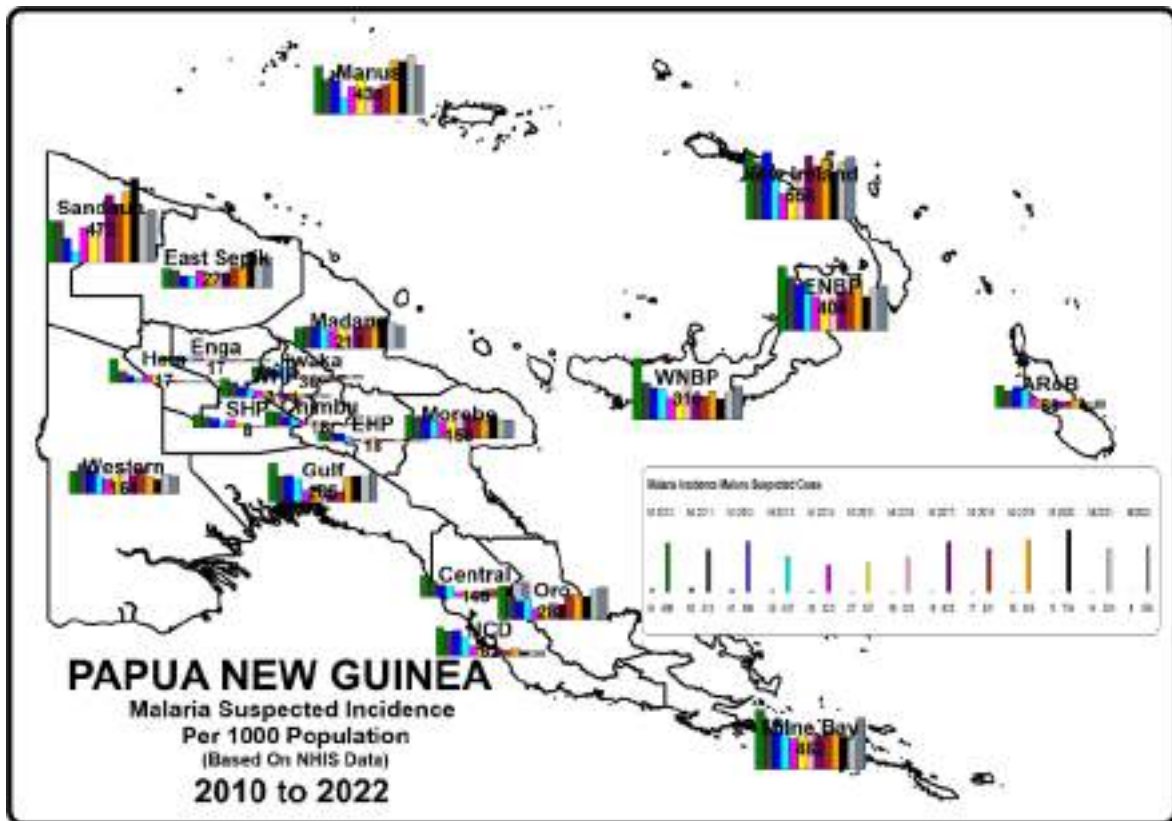


Fig. 3 - Reported Malaria Incidence In PNG From 2016 To 2020

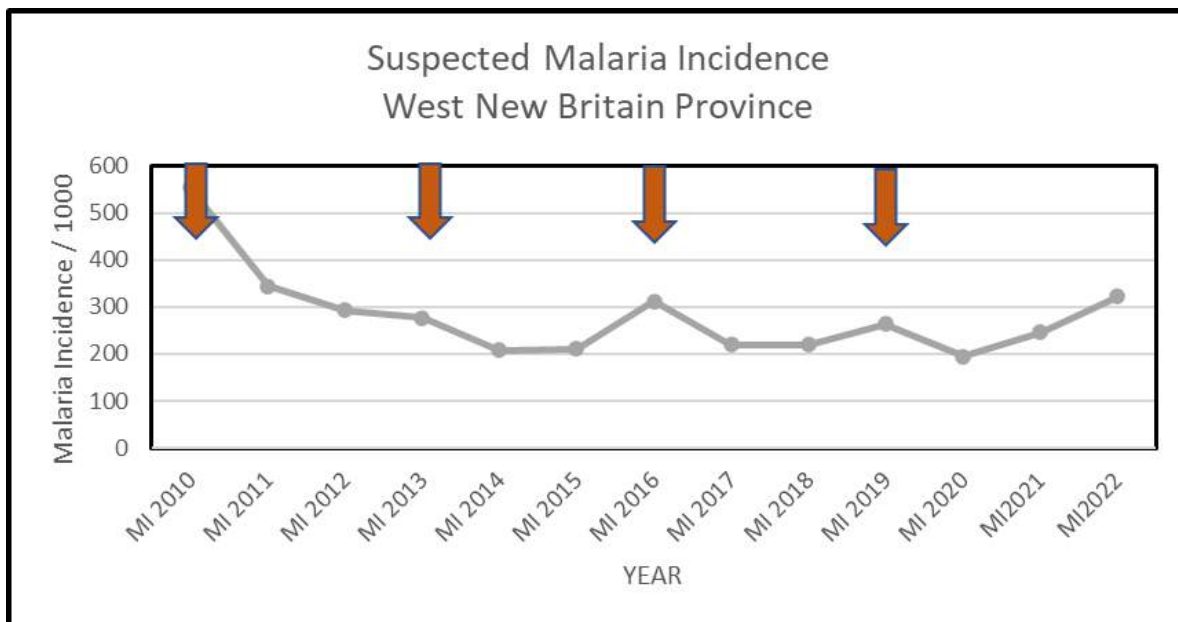
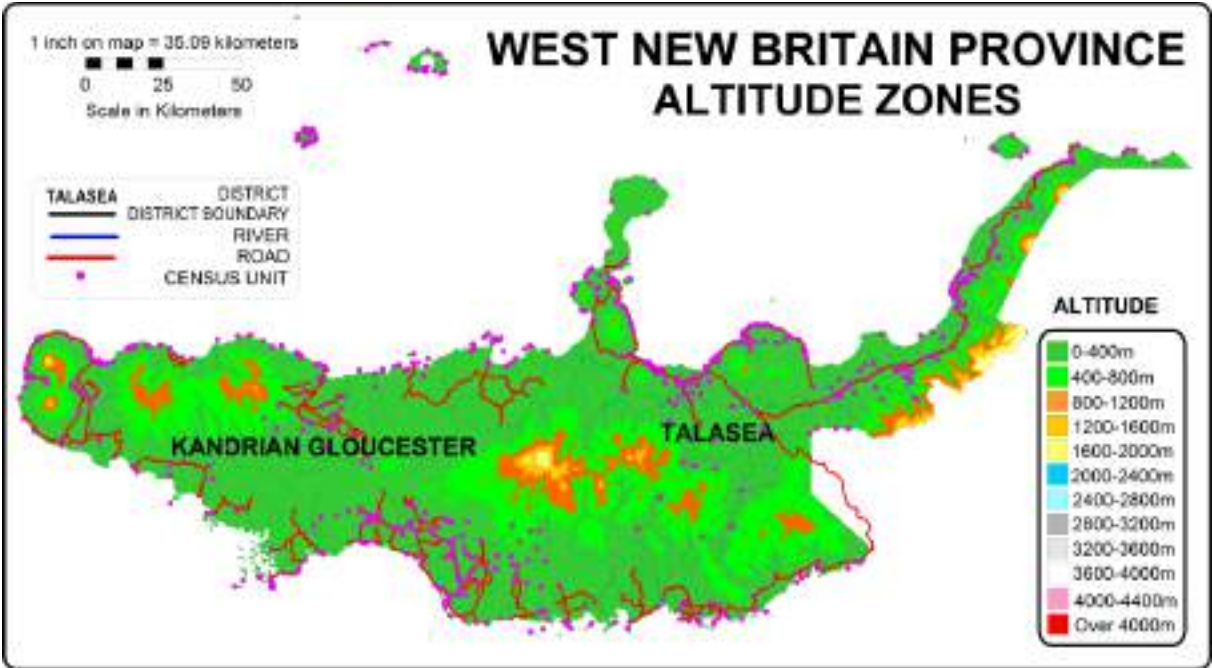


Fig. 4 – Malaria Suspected Malaria Incidence Versus Distribution Of Nets  
Arrows represents LLIN distributions done in West New Britain Province in 2010, 2013, 2016 and 2019.

### Appendix Three - Malaria By Altitude

West New Britain Province is one of two provinces on New Britain Island together with the islands of Bali Witu and Lobeau which are situated north east of the mainland of Papua New Guinea (PNG). While there are some mountains that rise above 2000m in West New Britain, the majority population live on the coastal areas below 400m where malaria is endemic with about 1% of the population living inland in areas 400-800m. About 67% of the province is accessible by road with the much of Kandrian Gloucester only being accessible by boat. At present, there is no direct road link between Kimbe the Provincial Capital and Kadrian which is the district capital of Kandrian Gloucester. For the rest of the population who cannot be reached by boat or vehicle (2%), they can only be reached by helicopter or trekking. Apart from Talasea, this makes West New Britain a challenging province to work in.

Fig. 1 Altitude Zones In West New Britain Province



**Appendix Four – Other Photographs**



LLIN Distributions Around Ulamona and Navo Health Centres



Distributions In Kalihai (Left) And Sagsag (Right)



Distributions In Gasmata And Melengalo (Right)



Boat Transporting Nets To Kandrian Gloucester In Kimbe (Left) And Gasmata (Right)



Trekking In Muela (Left) And Boat Used For Transport In Kilenge (Right)



Happy Customers In Kaliai (Left) and Gasmata (Right)



## ANNEX ONE

WEST NEW BRITAIN PROVINCE  
WEST NEW BRITAIN POPULATION 2022  
LLIN DISTRIBUTION SUMMARY SHEET

LLG	WARD	Village	Estimated 2022 Population Based on 2000 Census	2022 Population Estimated Based On 2019	Health Centre	Population Surveyed	House Holds Surveyed	Nets Issued	Date Of Distribution	Villages	Digice!	Bmobile	Houses With Radios	Radio Networks	Comments	
<b>TALASEA</b>			<b>300,467</b>	<b>300,467</b>		<b>296,705</b>	<b>54,557</b>	<b>144,135</b>			<b>445</b>	<b>429</b>	<b>180</b>	<b>15,054</b>	<b>308</b>	
<b>BIALLA RURAL</b>			<b>84,425</b>	<b>88,088</b>		<b>90,380</b>	<b>17,377</b>	<b>44,502</b>			<b>170</b>	<b>156</b>	<b>35</b>	<b>371</b>	<b>63</b>	
	1.	BAIA	<b>882</b>	<b>984</b>		<b>624</b>	<b>116</b>	<b>302</b>			<b>4</b>	<b>4</b>	<b>0</b>	<b>0</b>		Hargy Oil
	4	1.Baea	348	310	Ulamona HC	237	41	114	10.04.23	1	1	0	0			BoAT-AP there
		2.Baobao	175	238	Ulamona HC	139	26	67	10.04.23	1	1	0	0			Boat
		3.Loloi	145	128	Ulamona HC	132	23	66	10.04.23	1	1	0	0			Boat
		4.Pale	215	308	Ulamona HC	116	26	55	10.04.23	1	1	0	0			Boat
	2.	NOAU	<b>1,941</b>	<b>3,104</b>		<b>3,778</b>	<b>630</b>	<b>1,755</b>			<b>13</b>	<b>12</b>	<b>0</b>	<b>24</b>		Hargy Oil
	5	1.Nantambu/Bakada	210	382	Ulamona HC	491	76	227	07.04.23	1	1	0	5			Road
		2.Noau	868	664	Ulamona HC	850	140	385	06.04.23	1	1	0	0			Road
		3.Likuranga	278	79	Ulamona HC	124	25	60	07.04.23	1	1	0	0			Road
		4.Piapia/Kunai	152	228	Ulamona HC	220	37	100	06.04.23	1	1	0	0			Road
		5.Voluvolu	434	664	Ulamona HC	461	82	216	06.04.23	1	1	0	1			Road
		6 Vilavila	157	157	Ulamona HC	126	23	60	07.04.23	1	1	0	0			Road
		7 NB5 Estate	155	155	Ulamona HC	208	23	95	07.04.23	1	1	0	0			Road
		8 Gilo Estate	496	496	Ulamona HC	662	99	308	07.04.23	1	1	0	9			Road
		9 Alaba Estate	89	89	Ulamona HC	81	18	40	07.04.23	1	1	0	0			Road
		10 Mumata Estate	75	75	Ulamona HC	46	7	22	07.04.23	1	1	0	0			Road
		11 Topa Estate	0	0	Ulamona HC	74	12	37	07.04.23	1	1	0	0			Road
		12. Notsan Estate	116	116	Ulamona HC	206	40	94	07.04.23	1	1	0	9			Road
		13.Bologo		NEW	Ulamona HC	229	48	111	07.04.23	1	0	0	0			Road
	3.	UBILI	<b>3,497</b>	<b>1,994</b>		<b>2,601</b>	<b>453</b>	<b>1,216</b>			<b>3</b>	<b>3</b>	<b>0</b>	<b>2</b>		Hargy Oil
	2	1.Ubili	1,507	1,214	Ulamona HC	1,338	209	621	02.04.23	1	1	0	2			Road
		2.Ulamona Cath.Mission	1,990	781	Ulamona HC	870	164	413	02.04.23	1	1	0	0			Road
		3.Saltamana Estate		NEW	Ulamona HC	393	80	182	05.04.23	1	1	0	0			Road
	4.	NAVO	<b>4,258</b>	<b>9,815</b>		<b>10,415</b>	<b>2,222</b>	<b>4,942</b>			<b>22</b>	<b>20</b>	<b>0</b>	<b>34</b>		Hargy Oil
	4	1.Siviga	376	163	Navo UC	235	48	115	29.03.23	1	1	0	0			Road
		2.Nav0 Pltn Div. 1	2,419	0	Navo UC											Covered under Atata Div-1
		Mill Compound		689	Navo UC	779	150	368	29.03.23	1	1	0	0			Road
		Atata Div 1		998	Navo UC	1,440	284	660	29.03.23	1	1	0	10			Road
		Atata Div 2		474	Navo UC	276	61	130	30.03.23	1	1	0	0			Road
		Atata Div 3		77	Navo UC	142	23	70	30.03.23	1	1	0	0			Road
		Atata SSR		205	Navo UC	246	50	119	30.03.23	1	1	0	6			Road
		3.Nav0 Pltn Div. 2	1,341	0	Navo UC					1						Same as Kiba Comp
		Kiba Compound		1,753	Navo UC	1,303	313	619	29.03.23	1	1	0	1			Road
		Field #10		215	Navo UC	123	19	59	30.03.23	1	1	0	1			Road
		4.Nav0 Pltn Div. 3	121	0	Navo UC	198	35	96	30.03.23	1	1	0	0			Road
		Ibana Compound		1,161	Navo UC	1,672	391	794	29.03.23	1	1	0	2			Road
		Field 4&5		NEW	Navo UC	320	47	154	30.03.23	1	1	0	0			Road
		5. Sabalbala Estate		1,481	Navo UC	1,270	310	572	31.03.23	1	1	0	1			Road
		6.Sena		569	Navo UC	425	110	208	29.03.23	1	1	0	0			Road
		7.Wamakuma		248	Navo UC	396	85	185	30.03.23	1	0	0	12			Road
		8. Remailing		554	Navo UC	353	62	167	30.03.23	1	1	0	0			Road/Trek
		9.Pandi		37	Navo UC	311	59	151	31.03.23	1	1	0	0			Road/Trek
		Bageta		328	Navo UC											Same as Pandi
		Pata		135	Navo UC	171	28	86	31.03.23	1	1	0	0			Road/Trek
		Pouka		146	Navo UC	135	24	67	31.03.23	1	1	0	0			Road/Trek
		Manu		427	Navo UC	339	77	176	31.03.23	1	1	0	1			Road/Trek
		Gamupa		156	Navo UC	84	12	51	31.03.23	1	1	0	0			Road/Trek
		Painawe		NEW	Navo UC	197	34	95	31.03.23	1	1	0	0			Road
	5.	LOLOBAU	<b>1,766</b>	<b>1,516</b>		<b>1,653</b>	<b>275</b>	<b>778</b>			<b>5</b>	<b>5</b>	<b>0</b>	<b>15</b>		
	5	1.Poipoi	226	210	Ulamona HC	227	35	105	09.04.23	1	1	0	3			Boat
		2.Potou	1,048	856	Ulamona HC	786	138	363	09.04.23	1	1	0	2			Boat - Aid Post Here
		3.Au-Aulu	86	71	Ulamona HC	161	29	78	09.04.23	1	1	0	9			Boat
		4.Viluvilu	205	173	Ulamona HC	188	30	92	09.04.23	1	1	0	0			Boat
		5.Lolobau Pltn	201	208	Ulamona HC	291	43	140	09.04.23	1	1	0	1			Boat
	6.	KABAIA	<b>7,948</b>	<b>7,632</b>		<b>7,730</b>	<b>1,265</b>	<b>3,744</b>			<b>19</b>	<b>19</b>	<b>0</b>	<b>158</b>		Hargy Oil
	2	1.Kabaia Settlement	4,967	231	Ulamona HC	195	21	96	01.04.23	1	1	0	0			Boat
		KSS #2		403	Ulamona HC	501	98	241	01.04.23	1	1	0	0			Road
		KSS #3		495	Ulamona HC	479	85	231	01.04.23	1	1	0	5			Road
		KSS #4		278	Ulamona HC	552	97	268	01.04.23	1	1	0	16			Road
		KSS #5		274	Ulamona HC	292	44	143	01.04.23	1	1	0	1			Road
		KSS #6		372	Ulamona HC	328	54	157	01.04.23	1	1	0	3			Road
		KSS #7		286	Ulamona HC	243	20	117	01.04.23	1	1	0	4			Road
		KSS #8		248	Ulamona HC	290	29	140	01.04.23	1	1	0	7			Road
		KSS #9		381	Ulamona HC	364	44	175	01.04.23	1	1	0	0			Road
		2.Soi Settlement	2,982	387	Ulamona HC	535	100	258	03.04.23	1	1	0	15			Road
		SS #2		623	Ulamona HC	519	102	251	03.04.23	1	1	0	0			Road
		SS #3		528	Ulamona HC	553	100	266	02.04.23	1	1	0	6			Road
		SS #4		279	Ulamona HC	273	44	132	02.04.23	1	1	0	32			Road
		SS #5		348	Ulamona HC	404	66	205	02.04.23	1	1	0	3			Road
		SS #6		787	Ulamona HC	653	129	321	02.04.23	1	1	0	25			Road
		SS #7		206	Ulamona HC	360	50	171	02.04.23	1	1	0	1			Road
		SS #8		616	Ulamona HC	314	50	150	02.04.23	1	1	0	6			Road
		SS #9		531	Ulamona HC	448	64	216	02.04.23	1	1	0	16			Road
		SS #10		359	Ulamona HC	427	68	206	02.04.23	1	1	0	18			Road
	7.	BAREMA	<b>4,631</b>	<b>6,981</b>		<b>7,140</b>	<b>1,395</b>	<b>3,553</b>			<b>6</b>	<b>6</b>	<b>4</b>	<b>41</b>		Hargy Oil
	4	1.Gigipuna	238	434	Ulamona HC	381	68	184	08.04.23	1	1	0	41			Road
		2.Sovula	240	553	Ulamona HC	647	100	312	03.04.23	1	1	0	0			Road
		3.Pakisi	224	380	Biala HC	465	65	222	30.04.23	1	1	1	0		FM	Road

LLG	WARD	Village	Estimated 2022 Population Based on 2000 Census	2022 Population Estimated Based On 2019	Health Centre	Population Surveyed	House Holds Surveyed	Nets Issued	Date Of Distribution	Villages	Digicel	Bmobile	Houses With Radios	Radio Networks	Comments
		4.Barema Pltn	3,929	1,324	Biala HC	1,371	350	680	24.04.23	1	1	1	0	FM	Road
		5.Berema Stlmnt		3,738	Biala HC	3,775	700	1,907	26.04.23	1	1	1	0	FM	Road
		6. Berema Mill Compound		552	Biala HC	501	112	248	24.04.23	1	1	1	0	FM	Road
		8.WILELO	6,521	5,198		6,422	1,377	3,338		2	2	2	0		Hargy Oil
		2 1.Wilelo Plnt	5,937	4,656	Biala HC	5,876	1,228	3,070	25.04.23	1	1	1	0	FM	Road
		2.Kerakera Hargy Oil Palm Div.	583	542	Biala HC	546	149	268	24.04.23	1	1	1	0	FM	Road
		9.APUPUL	5,142	4,775		5,086	1,018	2,548		8	8	8	0		Hargy Oil
		8 1.Apupupulu	777	658	Biala HC	681	180	350	21.04.23	1	1	1	0	FM	Road
		2.Baikakea	625	553	Biala HC	595	116	289	21.04.23	1	1	1	0	FM	Road
		3.Bubu	651	614	Biala HC	601	123	303	21.04.23	1	1	1	0	FM	Road
		4.Gomu	1,054	944	Biala HC	1,134	195	588	21.04.23	1	1	1	0	FM	Road
		5.Urumaili	280	361	Biala HC	389	65	192	21.04.23	1	1	1	0	FM	Road
		6.Haiwara Camp	196	270	Biala HC	121	27	62	30.04.23	1	1	1	0	FM	Road
		7.Urumaili Pltn Div. 8	1,155	821	Biala HC	1,005	200	490	24.04.23	1	1	1	0	FM	Road
		8.Hargy Compound Area 7	404	553	Biala HC	560	112	274	30.04.23	1	1	1	0	FM	Road
		10.BIALLA	6,159	4,942		4,729	950	2,377		7	6	6	0		Hargy Oil
		7 1.Matiliili	910	990	Biala HC	889	179	453	22.04.23	1	1	1	0	FM	Road
		2.Popio Vop	72	213	Biala HC	121	26	61	22.04.23	1	1	1	0	FM	Road
		3.Waigo Vop	128	375	Biala HC	104	28	50	30.04.23	1	1	1	0	FM	Road
		4.Ewasse	1,397	1,338	Biala HC	1,377	248	682	22.04.23	1	1	1	0	FM	Road
		5.Ewasse Govt. Stn	187	0	Biala HC					1					Included Under Ewase
		6.Hargy Mill	1,887	1,029	Biala HC	1,074	221	537	24.04.23	1	1	1	0	FM	Road
		7.Makakiva Div. 1	1,577	997	Biala HC	1,164	248	594	28.04.23	1	1	1	0	FM	Road
		11.TIAURU	4,659	4,626		4,615	825	2,237		4	4	3	0		Hargy Oil
		4 1.Mataururu	418	698	Biala HC	733	150	365	22.04.23	1	1	0	0	FM	Road
		2.Kiava	322	477	Biala HC	617	111	294	22.04.23	1	1	1	0	FM	Road
		3.Tiauru Resettlement	3,695	3,051	Biala HC	2,837	489	1,382	30.04.23	1	1	1	0	FM	Road
		4.Baubata Dpi Stn	224	400	Biala HC	428	75	196	30.04.23	1	1	1	0	FM	Road
		12.SALE \ MALASI	2,424	2,926		2,991	486	1,482		5	5	5	0		Hargy Oil
		4 1.Kiamu	686	713	Biala HC	619	100	310	24.04.23	1	1	1	0	FM	Road
		2.Malasi	716	963	Biala HC	750	120	374	23.04.23	1	1	1	0	FM	Road
		3.Sulu	404	671	Biala HC	281	47	139	23.04.23	1	1	1	0	FM	Road
		4.Silali	618	215	Biala HC	839	127	411	24.04.23	1	1	1	0	FM	Road
		Siali 2		363	Biala HC	502	92	248	24.04.23	1	1	1	0	FM	Road
		13.SALE \ SEGE	2,219	2,370		2,018	373	993		5	5	0	13		Hargy Oil
		4 1.Elobe	415	477	Lalopo HC	212	38	102	30.03.23	1	1	0	7	93.6 FM	Road
		2.Sale	1,015	888	Lalopo HC	485	88	239	30-31.03.23	1	1	0	0		Road
		3.Sege	758	1,005	Lalopo HC	830	174	418	30-31.03.23	1	1	0	0		Road
		4.Sale Sege	30	0	Lalopo HC	169	23	84	30.03.23	1	1	0	3	93.6 FM	Road/School
		5.Ole		NEW	Lalopo HC	322	50	150	30-31.03.23	1	1	0	3	93.6 FM	Road
		14.UASILAU	4,108	4,759		4,045	811	2,025		11	9	0	8		NBPOL
		7 1.Bagela/Bibisi	490	303	Lalopo HC	249	50	122	31-01.04.23	1	1	0	0		Road/2H Trek
		2.Movai	170	283	Lalopo HC	225	48	117	31-03.04.23	1	1	0	0		Road/2H Trek
		3.Sipa	453	683	Lalopo HC	355	68	176	31-02.04.23	1	1	0	0		Road/1H Trek
		4.Uasilau	1,292	560	Lalopo HC	528	111	267	31-01.04.23	1	1	0	0		Road
		5.Umu	408	319	Lalopo HC	268	46	132	31.03.23	1	1	0	0	93.6 FM	Road
		6.Wainamasile	1,183	1,514	Lalopo HC	1,385	281	693	30-31.03.23	1	1	0	4	93.6 FM	Road
		7.Salelubu Govt. Stn	112	500	Lalopo HC	236	39	117	01.04.23	1	1	0	4	93.6 FM	Road
		Yeka Tuvusi		598	Lalopo HC										Broken into new villages
		8.Gotu		NEW	Lalopo HC	191	39	95	31-03.04.23	1	0	0	0		Trek
		9.Babata 1		NEW	Lalopo HC	147	40	82	31-03.04.23	1	0	0	0		Trek
		10.Mamao		NEW	Lalopo HC	235	46	111	30.03.23	1	1	0	0		Road
		11.Bala		NEW	Lalopo HC	226	43	113	01.04.23	1	1	0	0	93.6 FM	Road
		15.SILANGA	5,655	4,617		4,550	978	2,280		14	14	0	11		NBPOL
		10 1.Babata	978	930	Silanga HC	704	134	358	28.03.23	1	1	0	0		Road
		2.Gaikeke	373	440	Silanga HC	323	62	159	28.03.23	1	1	0	0	93.6 FM	Road
		3.Kailona	315	278	Silanga HC	186	33	91	28.03.23	1	1	0	0	93.6 FM	Road
		4.Gilolo	350	321	Silanga HC	193	42	92	28.03.23	1	1	0	0		Road
		5.Kisiluvi	492	419	Silanga HC	302	59	148	28.03.23	1	1	0	0	93.6 FM	Road
		6.Kotou	1,020	758	Silanga HC	654	132	312	28.03.23	1	1	0	0	93.6 FM	Road
		7.Ligite	950	594	Silanga HC	687	146	354	28.03.23	1	1	0	0		Road
		8.Lo	392	320	Silanga HC	269	86	136	28.03.23	1	1	0	1	93.6 FM	Road
		9.Luge	579	437	Silanga HC	363	94	182	28.03.23	1	1	0	0	93.6 FM	Road
		10.Silanga Mission	208	119	Silanga HC	94	17	49	28.03.23	1	1	0	0	93.6 FM	Road
		11.Bataro		NEW	Silanga HC	298	67	152	28-29.03.23	1	1	0	0	93.6 FM	Road (Vicinity)
		12.VOP Block		NEW	Silanga HC	140	28	67	28.03.23	1	1	0	0	93.6 FM	Vicinity
		13.Lasibu		NEW	Silanga HC	199	54	119	28.03.23	1	1	0	9	93.6 FM	Road
		14.Sivipuna		NEW	Silanga HC	138	24	61	28.03.23	1	1	0	1	93.6 FM	Road
		16.PASUSU	6,124	6,131		6,548	1,118	3,201		10	10	0	65		NBPOL
		8 1.Kai	453	636	Silanga HC	659	127	319	27.03.23	1	1	0	5	93.6 FM	Road
		2.Kukula	476	630	Silanga HC	811	159	410	25.03.23	1	1	0	0		Road
		3.Marapu	588	564	Silanga HC	553	94	259	25-26.03.23	1	1	0	15	93.6 FM	Road
		4.Rokou	483	341	Silanga HC	266	50	137	26.03.23	1	1	0	0	93.6 FM	Road/1H Trek
		5.Sisimi	362	303	Silanga HC	249	43	122	27.03.23	1	1	0	3	93.6 FM	Road
		6.Tarobi	985	1,009	Silanga HC	1,093	196	533	27-28.03.23	1	1	0	25	93.6 FM	Road
		7.Savaive	285	296	Silanga HC	281	39	136	25.03.23	1	1	0	12	93.6 FM	Road/1H Trek
		8.Mamota Settlement	2,494	2,201	Silanga HC	2,246	361	1,099	27.03.23	1	1	0	5	93.6 FM	Road
		9. Hamamas		150	Silanga HC	267	35	128	25-26.03.23	1	1	0	0	93.6 FM	Road
		10. Maito		NEW	Silanga HC	123	14	58	27.03.23	1	1	0	0		Road/1H Trek
		17.UBAI \ BILOMI	11,103	9,392		8,762	1,858	4,304		17	14	0	0		NBPOL
		10 1.Ubai	1,635	1,864	Silanga HC	1,569	298	778	26.03.23	1	1	0	0		Road
		2.Giriti	261	756	Silanga HC	264	52	134	24-25.03.23	1	1	0	0		Road
		Ainbul		267	Silanga HC	262	55	134	22-23.03.23	1	0	0	0		Road
		Sege		649	Silanga HC					1					Included under Buvusi HC
		3.Kapiura Div. 4	1,775	1,004	Silanga HC	989	238	460	25-27.03.23	1	1	0	0		Road
		4.Kapiura Div. 3	1,771	594	Silanga HC	889	144	442	25-27.03.23	1	1	0	0		Road

LLG	WARD	Village	Estimated 2022 Population Based on 2000 Census	2022 Population Estimated Based On 2019	Health Centre	Population Surveyed	House Holds Surveyed	Nets Issued	Date Of Distribution	Villages	Digicel	Bmobile	Houses With Radios	Radio Networks	Comments
		5.Kapiura Nursery	2,235	1,409	Silanga HC	1,320	310	647	25-27.03.23	1	1	0	0		Road
		6.Kapiura Mill Compound	1,157	712	Silanga HC	597	119	287	25-26.03.23	1	1	0	0		Road
		7.Kapiura Senior Mgmt Comp	205	0	Silanga HC	49	9	22	25-26.03.23	1	1	0	0		Included Under Mill Compound
		8.Kapiura Mill Execu. Residenc	47	0	Silanga HC	47	6	21	25-26.03.23	1	1	0	0		Included Under Mill Compound
		9.Kapiura Div. 2	910	631	Silanga HC	621	147	299	25-26.03.23	1	1	0	0		Road
		10.Bilomi Div. 1	1,106	1,029	Silanga HC	923	220	457	25-26.03.23	1	1	0	0		Road
		11. Kapiura Div. 5		477	Silanga HC	383	107	206	25-26.03.23	1	1	0	0		Road
		12.Madang Kona		NEW	Silanga HC	303	63	153	24.03.23	1	1	0	0		Road
		13.Upper Lavege		NEW	Silanga HC	196	25	95	24-25.03.23	1	1	0	0		Road
		14.Uvol Camp		NEW	Silanga HC	41	9	20	22.03.23	1	0	0	0		Road
		15. Loa 2		NEW	Silanga HC	309	56	149	24-25.03.23	1	1	0	0		Road
		18.MANGSENG	1,341	1,468		2,040	373	1,013		8	3	0	0		NBPOL
	4	1.Sabaltapun	287	253	Silanga HC	282	47	136	22-23.03.23	1	1	0	0		Road
		2.Umua	546	431	Silanga HC	434	79	208	22-23.03.23	1	0	0	0		Road
		3.Berema	331	396	Silanga HC	336	72	172	22-23.03.23	1	1	0	0	93.5 FM	Road
		4.Malele	177	168	Silanga HC	321	46	154	22-23.03.23	1	0	0	0		Road
		Patua/Gavuvu		220	Silanga HC	243	44	124	25.03.23	1	1	0	0		Road
		Ulupuna		NEW	Silanga HC	261	48	129	18.03.23	1	0	0	0		Trek
		Morovona		NEW	Silanga HC	133	19	66	18.03.23	1	0	0	0		Trek
		SBLC Logging Camp		NEW	Silanga HC	30	18	24	26.03.23	1	0	0	0		Road
		19.BIALLA URBAN	4,048	4,859		4,633	854	2,414		7	7	7	0		NBPOL
	7	1.Sect: 21/33	191	544	Biala HC	313	50	155	24.04.23	1	1	1	0	FM	Road
		2.Sect: 19/20/30	665	748	Biala HC	269	50	130	24.04.23	1	1	1	0	FM	Road
		3.Sect: 12/14	737	676	Biala HC	712	149	430	26.04.23	1	1	1	0	FM	Road
		4.Bialla 04	737	1,291	Biala HC	1,336	257	698	24.04.23	1	1	1	0	FM	Road
		5.Sect: 25/26/27/28/32	273	247	Biala HC	360	66	182	27.04.23	1	1	1	0	FM	Road
		6.Kerema Settlement	537	682	Biala HC	549	100	270	27.04.23	1	1	1	0	FM	Road
		7.Mixed Settlement	908	671	Biala HC	1,094	182	549	29.04.23	1	1	1	0	FM	Road
		<b>BALI \ WITU RURAL</b>	<b>32,041</b>	<b>22,520</b>		<b>22,338</b>	<b>4,270</b>	<b>11,217</b>		<b>39</b>	<b>37</b>	<b>0</b>	<b>0</b>	<b>0</b>	
	1	<b>PENATA</b>	<b>4,150</b>	<b>2,849</b>		<b>2,837</b>	<b>510</b>	<b>1,429</b>		<b>4</b>	<b>4</b>	<b>0</b>	<b>0</b>	<b>0</b>	<b>Bali Island</b>
		1.Manopa	933	763	Unea HC	733	135	369	11.03.23	1	1	0	0		Boat
		2.Penata	2,191	1,211	Unea HC	1,201	217	604	11.03.23	1	1	0	0		Boat
		3.Penopo/Nikalava	831	550	Unea HC	632	108	319	10.03.23	1	1	0	0		Boat
		4.Nigilani SDA Mission	196	325	Unea HC	271	50	137	10.03.23	1	1	0	0		Boat
	2	<b>GAROMATONG</b>	<b>5,872</b>	<b>4,109</b>		<b>4,010</b>	<b>764</b>	<b>2,004</b>		<b>7</b>	<b>7</b>	<b>0</b>	<b>0</b>		
		1.Malangae	1,948	806	Unea HC	781	138	391	16.03.23	1	1	0	0		Boat
		2.Nalagaro (Palinganekkebu)	1,838	1,316	Unea HC	1,206	249	603	16.03.23	1	1	0	0		Boat
		3.Penata - Botong	1,901	985	Unea HC	886	176	445	15.03.23	1	1	0	0		Boat
		4.Wattbera Govt. Stn	23	165	Unea HC	254	49	127	15.03.23	1	1	0	0		Boat
		5.Vatukele Community School	98	150	Unea HC	152	28	76	16.03.23	1	1	0	0		Boat
		6.Bali Pltn	63	188	Unea HC	226	40	113	16.03.23	1	1	0	0		Boat
		7. Nambungi		498	Unea HC	505	84	249	15.03.23	1	1	0	0		Boat
	3	<b>KUMBURI</b>	<b>3,520</b>	<b>2,281</b>		<b>2,236</b>	<b>431</b>	<b>1,123</b>		<b>2</b>	<b>2</b>	<b>0</b>	<b>0</b>		
		1.Kumburi No. 1	1,467	923	Unea HC	1,009	181	504	08.03.23	1	1	0	0		Boat
		2.Kumburi No. 2	2,053	1,358	Unea HC	1,227	250	619	08.03.23	1	1	0	0		Boat
	4	<b>LOVANUA</b>	<b>6,992</b>	<b>5,272</b>		<b>5,055</b>	<b>912</b>	<b>2,541</b>		<b>8</b>	<b>8</b>	<b>0</b>	<b>0</b>		
		1.Makiri	1,013	688	Unea HC	578	108	294	06.03.23	1	1	0	0		Boat
		2.Matapupuru (Navadao)	761	775	Unea HC	692	131	348	06.03.23	1	1	0	0		Boat
		3.Penata Ketinarave	1,477	1,098	Unea HC	1,153	198	577	06.03.23	1	1	0	0		Boat
		4.Ruka - Boroko	810	640	Unea HC	638	89	320	05.03.23	1	1	0	0		Boat
		5.Tamagone	1,379	942	Unea HC	962	192	481	06.03.23	1	1	0	0		Boat
		6.Nindoko	399	292	Unea HC	220	40	111	05.03.23	1	1	0	0		Boat
		7.Nimbode (Kumbu)	880	691	Unea HC	691	131	346	06.03.23	1	1	0	0		Boat
		8.Makiri Cath. Mission	275	146	Unea HC	121	23	64	05.03.23	1	1	0	0		Boat
	5	<b>MUNDUA</b>	<b>3,068</b>	<b>2,332</b>		<b>2,464</b>	<b>450</b>	<b>1,236</b>		<b>5</b>	<b>5</b>	<b>0</b>	<b>0</b>		<b>Vitu Island</b>
		1.Goru	819	616	Paruru HC	672	114	335	24.03.23	1	1	0	0		Boat
		2.Kore	443	390	Paruru HC	286	65	146	24.03.23	1	1	0	0		Boat
		3.Rangu	518	398	Paruru HC	432	68	217	24.03.23	1	1	0	0		Boat
		4.Silenge	513	359	Paruru HC	546	100	275	24.03.23	1	1	0	0		Boat
		5.Kuravu	775	569	Paruru HC	528	103	263	24.03.23	1	1	0	0		Boat
	6	<b>WEST GAROVE</b>	<b>4,589</b>	<b>2,920</b>		<b>2,803</b>	<b>575</b>	<b>1,412</b>		<b>8</b>	<b>7</b>	<b>0</b>	<b>0</b>		
		1.Balangore No. 1	1,474	840	Paruru HC	843	164	428	23.02.23	1	1	0	0		Boat
		2.Balangore No. 2	679	458	Paruru HC	380	78	191	24.02.23	1	1	0	0		Boat
		3.Vituhu	1,246	776	Paruru HC	938	191	472	23.02.23	1	1	0	0		Road
		4.Virio	131	94	Paruru HC	106	27	53	24.02.23	1	1	0	0		Boat
		5.Dalaroto	138	56	Paruru HC	53	8	26	23.02.23	1	1	0	0		Boat
		6.Talobi	275	238	Paruru HC	184	42	92	24.02.23	1	1	0	0		Boat
		7.Vitu Govt. Stn	170	113	Paruru HC					1					Included Under Vituhu
		8.St. Michael's Cath. Mission	476	344	Paruru HC	299	65	150	24.02.23	1	1	0	0		Boat
	7	<b>EAST GAROVE</b>	<b>3,849</b>	<b>2,758</b>		<b>2,933</b>	<b>628</b>	<b>1,472</b>		<b>5</b>	<b>4</b>	<b>0</b>	<b>0</b>		
		1.Lama	693	353	Paruru HC	691	182	343	24.02.23	1	1	0	0		Boat
		2.Lambe	1,943	1,441	Paruru HC	1,412	269	706	24.02.23	1	1	0	0		Boat
		3.Dole	313	266	Paruru HC	350	77	182	24.02.23	1	1	0	0		Boat
		4.Potpot/Meto	630	424	Paruru HC	480	100	241	24.02.23	1	1	0	0		Boat
		5.Lama Pltn	271	274	Paruru HC					1					Included under Lama
				0											
		<b>HOSKINS RURAL</b>	<b>45,089</b>	<b>40,359</b>		<b>37,535</b>	<b>6,259</b>	<b>18,162</b>		<b>44</b>	<b>44</b>	<b>44</b>	<b>4,213</b>	<b>44</b>	
	1	<b>GARUA</b>	<b>5,256</b>	<b>4,445</b>		<b>4,734</b>	<b>876</b>	<b>2,280</b>		<b>4</b>	<b>4</b>	<b>4</b>	<b>524</b>		
		1.Mai	1,169	1,114	Valoka HC	823	157	387	26.03.23	1	1	1	119	96 FM	Road
		2.Balabolo	1,099	1,199	Valoka HC	1,082	211	523	26.03.23	1	1	1	134	96 FM	Road
		3.Buluma Village	2,893	2,132	Valoka HC	2,644	471	1,280	27.03.23	1	1	1	254	96 FM	Road
		4.Mai Mission	96	0	Valoka HC	185	37	90	26.03.23	1	1	1	17	96 FM	Included Under Mai
	2	<b>KWALAKESI</b>	<b>6,605</b>	<b>5,033</b>		<b>4,442</b>	<b>817</b>	<b>2,108</b>		<b>5</b>	<b>5</b>	<b>5</b>	<b>413</b>		

LLG	WARD	Village	Estimated 2022 Population Based on 2000 Census	2022 Population Estimated Based On 2019	Health Centre	Population Surveyed	House Holds Surveyed	Nets Issued	Date Of Distribution	Villages	Digicel	Bmobile	Houses With Radios	Radio Networks	Comments
		1.Banaule	1,857	1,528	Valoka HC	1,932	361	920	26.03.23	1	1	1	8	96 FM	Road
		2.Kwalakesi	1,666	1,529	Valoka HC	900	176	426	29.03.23	1	1	1	132	96 FM	Road
		3.Gavuvu Mission	1,355	498	Valoka HC	550	75	261	29.03.23	1	1	1	73	96 FM	Road
		4.Dami Research	1,481	1,153	Valoka HC	903	186	427	27.03.23	1	1	1	181	96 FM	Road
		5.Dami Forestry	245	325	Valoka HC	157	19	74	27.03.23	1	1	1	19	96 FM	Road
		<b>3.HOSKINS</b>	<b>2,478</b>	<b>2,917</b>		<b>2,071</b>	<b>366</b>	<b>1,002</b>		<b>4</b>	<b>4</b>	<b>4</b>	<b>334</b>		
		1.Kassia	1,638	1,365	Valoka HC	1,076	195	501	29.03.23	1	1	1	172	96 FM	Road
		2.Kassia Blocks	516	916	Valoka HC	530	90	253	29.03.23	1	1	1	85	99 FM	Road
		3.Hoskins Secondary School	250	333	Valoka HC	204	31	127	29.03.23	1	1	1	32	96 FM	Road
		4.Hoskins Airport	75	303	Valoka HC	261	50	121	29.03.23	1	1	1	45	96 FM	Road
		<b>4.KALU</b>	<b>5,205</b>	<b>5,057</b>		<b>4,530</b>	<b>743</b>	<b>2,139</b>		<b>5</b>	<b>5</b>	<b>5</b>	<b>494</b>		
		1.Galeowale	1,239	1,229	Valoka HC	981	184	459	31.03.23	1	1	1	167	96 FM	Road
		2.Gavaiva	1,731	1,747	Valoka HC	1,529	247	739	01.04.23	1	1	1	100	96 FM	Road
		3.Poropora/Kalu	863	732	Valoka HC	738	136	347	31.03.23	1	1	1	119	96 FM	Road
		4.Vovosi	1,064	990	Valoka HC	940	126	439	31.03.23	1	1	1	58	96 FM	Road
		5.Galeuale Settlement	308	358	Valoka HC	342	50	155	31.03.23	1	1	1	50	96 FM	Road
		<b>5.VALOKA</b>	<b>3,964</b>	<b>3,623</b>		<b>3,268</b>	<b>496</b>	<b>1,556</b>		<b>5</b>	<b>5</b>	<b>5</b>	<b>217</b>		
		1.Kololo	782	704	Valoka HC	691	100	333	31.03.23	1	1	1	79	96 FM	Road
		2.Kavutu	814	865	Valoka HC	736	104	347	31.03.23	1	1	1	4	96 FM	Road
		3.Valoka	1,838	1,336	Valoka HC	1,346	220	647	30.03.23	1	1	1	122	96 FM	Road
		4.Valoka Mission	348	339	Valoka HC	123	22	55	30.03.23	1	1	1	12	96 FM	Road
		5.Mora Mora Tech School	182	379	Valoka HC	372	50	174	31.03.23	1	1	1	0	96 FM	Road
		<b>6.RIKAU \ SIKI</b>	<b>6,052</b>	<b>6,009</b>		<b>6,291</b>	<b>994</b>	<b>3,171</b>		<b>5</b>	<b>5</b>	<b>5</b>	<b>741</b>		
		1.Rikau	1,353	1,295	Valoka HC	1,256	177	643	24.03.23	1	1	1	109	96 FM	Road
		2.Vaisisi	1,276	1,284	Valoka HC	1,322	229	635	01.04.23	1	1	1	145	96 FM	Road
		3.Lavileo Settlement	688	419	Valoka HC	387	72	280	01.04.23	1	1	1	71	96 FM	Road
		4.Taba Rikau Settlement	1,295	667	Valoka HC	1,057	146	511	01.04.23	1	1	1	132	96 FM	Road
		5.Siki Settlement	1,439	2,342	Valoka HC	2,269	370	1,102	01.04.23	1	1	1	284	96 FM	Road
		<b>7.KAGAGU</b>	<b>3,901</b>	<b>3,118</b>		<b>3,232</b>	<b>527</b>	<b>1,573</b>		<b>4</b>	<b>4</b>	<b>4</b>	<b>432</b>		
		1.Gavuvu	915	609	Malalia HC	678	111	335	27.03.23	1	1	1	79	93 FM	Road
		2.Gule	1,061	932	Malalia HC	933	142	449	24.03.23	1	1	1	104	93 FM	Road
		3.Karapi	1,740	1,392	Malalia HC	1,445	242	704	24.03.23	1	1	1	218	93 FM	Road
		4.Malalia Mission	184	185	Malalia HC	176	32	85	24.03.23	1	1	1	31	93 FM	Road
		<b>8.MALALA</b>	<b>4,853</b>	<b>4,121</b>		<b>3,867</b>	<b>624</b>	<b>1,877</b>		<b>4</b>	<b>4</b>	<b>4</b>	<b>391</b>		
		1.Galilo	2,270	1,954	Malalia HC	1,708	293	831	23.03.23	1	1	1	130	96 FM	Road
		2.Makasili	819	826	Malalia HC	731	112	350	23.03.23	1	1	1	51	93 FM	Road
		3.Vavua	1,285	892	Malalia HC	884	146	426	23.03.23	1	1	1	148	93 FM	Road
		4.Tagaragara	478	450	Malalia HC	544	73	270	23.03.23	1	1	1	62	93 FM	Road
		<b>9.POKILI</b>	<b>3,527</b>	<b>2,883</b>		<b>2,474</b>	<b>388</b>	<b>1,171</b>		<b>3</b>	<b>3</b>	<b>3</b>	<b>260</b>		
		1.Koimumu	1,787	1,690	Malalia HC	1,408	221	662	22.03.23	1	1	1	101	93 FM	Road
		2.Lavege	896	459	Malalia HC	344	63	167	22.03.23	1	1	1	62	96 FM	Road
		3.Rapuri	845	734	Malalia HC	722	104	342	22.03.23	1	1	1	97	93 FM	Road
		<b>10.HOSKINS URBAN</b>	<b>922</b>	<b>672</b>		<b>552</b>	<b>93</b>	<b>264</b>		<b>1</b>	<b>1</b>	<b>1</b>	<b>93</b>		
		1.Hoskins 1	462	672	Valoka HC	552	93	264	29.03.23	1	1	1	93	96 FM	Road
		2.Hoskins 2	460	0	Valoka HC										Same as Hoskins 1
		<b>11.BULUMA URBAN</b>	<b>2,328</b>	<b>2,482</b>		<b>2,074</b>	<b>335</b>	<b>1,021</b>		<b>4</b>	<b>4</b>	<b>4</b>	<b>314</b>		
		1.Buluma 01	681	2,003	Valoka HC	1,449	226	721	27.03.23	1	1	1	213	96 FM	Road
		2.Buluma 02	352	0	Valoka HC	155	22	78	27.03.23	1	1	1	17	96 FM	Included Under Buluma 1
		3.Buluma 03	471	237	Valoka HC	283	50	139	27.03.23	1	1	1	47	96 FM	Road
		4.Buluma 04	824	242	Valoka HC	187	37	83	27.03.23	1	1	1	37	96 FM	Road
		<b>KIMBE URBAN</b>	<b>33,091</b>	<b>28,113</b>		<b>24,275</b>	<b>4,246</b>	<b>11,766</b>		<b>47</b>	<b>45</b>	<b>45</b>	<b>258</b>	<b>45</b>	
		<b>1. GILA</b>		<b>5,036</b>		<b>3,484</b>	<b>615</b>	<b>1,737</b>		<b>7</b>	<b>6</b>	<b>6</b>	<b>51</b>		
		1.Gigo 2		852	Kimbe UC	344	72	165	08.05.23	1	1	1	0	NBC/FM	Road
		2.Gigo namel		625	Kimbe UC	792	145	388	08.05.23	1	1	1	51	NBC/FM	Road
		3.Gigo 1		1,136	Kimbe UC	546	101	262	08.05.23	1					Road
		4.Gigo Beach		665	Kimbe UC	164	30	79	08.05.23	1	1	1	0	NBC/FM	Road
		5.Laleki Beach		554	Kimbe UC	458	71	200	05.05.23	1	1	1	0	NBC/FM	Road
		6.Laleki Last Street		707	Kimbe UC	745	124	359	05.05.23	1	1	1	0	NBC/FM	Road
		7.Laleki First street		497	Kimbe UC	435	72	284	09.05.23	1	1	1	0	NBC/FM	Road
		<b>2. LUPAI</b>		<b>2,992</b>		<b>3,095</b>	<b>636</b>	<b>1,511</b>		<b>5</b>	<b>5</b>	<b>5</b>	<b>48</b>		
		1. Gigo 2		552	Kimbe UC	621	122	298	08.05.23	1	1	1	0	NBC/FM	Road
		2. Gigo 2 Central		384	Kimbe UC	428	97	211	09.05.23	1	1	1	14	NBC/FM	Road
		3. Banana Camp		684	Kimbe UC	531	117	256	10.05.23	1	1	1	4	NBC/FM	Road
		4. Bayside		594	Kimbe UC	702	153	356	08.05.23	1	1	1	30	NBC/FM	Road
		5. KCP Compound		778	Kimbe UC	813	147	390	08.05.23	1	1	1	0	NBC/FM	Road
		<b>3.MALAWARA</b>		<b>1,578</b>		<b>1,399</b>	<b>223</b>	<b>670</b>		<b>4</b>	<b>4</b>	<b>4</b>	<b>0</b>		
		1. Section one (1) Residential/ B.Camp		723	Kimbe UC	789	120	377	05.05.23	1	1	1	0	NBC/FM	Road
		2.Police Baracks		211	Kimbe UC	56	6	27	05.05.23	1	1	1	0	NBC/FM	Road
		3. Works compound		334	Kimbe UC	263	50	126	05.05.23	1	1	1	0	NBC/FM	Road
		4. Works Beach		310	Kimbe UC	291	47	140	05.05.23	1	1	1	0	NBC/FM	Road
		<b>4.TUVENI</b>		<b>3,453</b>		<b>3,231</b>	<b>563</b>	<b>1,559</b>		<b>8</b>	<b>8</b>	<b>8</b>	<b>0</b>		
		1.Section (10) Bush Camp		688	Kimbe UC	766	131	370	05.05.23	1	1	1	0	NBC/FM	Road
		2.Mule Dame		NEW	Kimbe UC	49	11	24	10.05.23	1	1	1	0	NBC/FM	Road
		3.Mulakairo Camp		520	Kimbe UC	368	70	177	05.05.23	1	1	1	0	NBC/FM	Road
		4.Siasi Camp		326	Kimbe UC	572	119	276	08.05.23	1	1	1	0	NBC/FM	Road
		5.Wabag Camp		556	Kimbe UC	349	56	168	05.05.23	1	1	1	0	NBC/FM	Road
		6. Section (10) Residential		616	Kimbe UC	330	50	158	05.05.23	1	1	1	0	NBC/FM	Road
		7. Masala Street		384	Kimbe UC	542	76	264	06.05.23	1	1	1	0	NBC/FM	Road
		8.Kainantu Camp		363	Kimbe UC	255	50	122	06.05.23	1	1	1	0	NBC/FM	Road
		<b>5.PALAGANI</b>		<b>2,203</b>		<b>2,306</b>	<b>364</b>	<b>1,109</b>		<b>4</b>	<b>4</b>	<b>4</b>	<b>3</b>		
		1. Kimbe Primary School		446	Kimbe UC	581	95	279	06.05.23	1	1	1	1	NBC/FM	Road
		2. Bula Camp		241	Kimbe UC	211	33	101	06.05.23	1	1	1	0	NBC/FM	Road
		3. Section (11) Residential		454	Kimbe UC	667	107	323	05.05.23	1	1	1	1	NBC/FM	Road
		4. Section (11) Bush Camp		1,061	Kimbe UC	847	129	406	05.05.23	1	1	1	1	NBC/FM	Road
		<b>6. MATAPAU</b>													

LLG	WARD	Village	Estimated 2022 Population Based on 2000 Census	2022 Population Estimated Based On 2019	Health Centre	Population Surveyed	House Holds Surveyed	Nets Issued	Date Of Distribution	Villages	Digicel	Bmobile	Houses With Radios	Radio Networks	Comments
		1. Section (15) Residential		1,325	Kimbe UC	858	96	413	02.05.23	1	1	1	2	NBC/FM	Road
		2. Section (42) Residential		755	Kimbe UC	1,094	132	526	03.05.23	1	1	1	9	NBC/FM	Road
		3. Section (27) & (Bush Camp)		2,099	Kimbe UC	1,002	150	481	02.05.23	1	1	1	55	NBC/FM	Road
		4. Kumugoras Bush Camp		904	Kimbe UC	647	99	310	02.05.23	1	1	1	53	NBC/FM	Road
		5. Section .11 (Madang Camp)		457	Kimbe UC										Could Not do due to Law and Order Issues
		7. LECHI		6,125		5,059	975	2,423		9	9	9	37		
		1. Cherish Camp		905	Kimbe UC	387	84	188	04.05.23	1	1	1	3	NBC/FM	Road
		2. NBC Compound & Bush Camp		532	Kimbe UC	630	65	305	02.05.23	1	1	1	25	NBC/FM	Road
		3. Section (21) Residential		1,086	Kimbe UC	1,234	234	594	01.05.23	1	1	1	0	NBC/FM	Road
		4. Baibat Bush Camp		1,035	Kimbe UC	233	50	113	03.05.23	1	1	1	0	NBC/FM	Road
		5. Wasara Bush Camp		677	Kimbe UC	654	149	307	01.05.23	1	1	1	0	NBC/FM	Road
		6. Wabag City		0	Kimbe UC										Closed
		7. Chimbu Camp		397	Kimbe UC										Closed
		8. Arowwe Camp		426	Kimbe UC	219	49	101	03.05.23	1	1	1	9	NBC/FM	Road
		9. Grammar School		433	Kimbe UC	976	195	469	01.05.23	1	1	1	0	NBC/FM	Road
		10. Mixed Camp		322	Kimbe UC	279	49	134	03.05.23	1	1	1	0	NBC/FM	Road
		11. Section 21 Bush Camp		312	Kimbe UC	447	100	212	03.05.23	1	1	1	0	NBC/FM	Road
		8. NARUAKA		1,187		2,100	393	1,027		6	5	5	0		
		1. Kimbe Sec School		553	Kimbe UC	441	75	214	06.05.23	1	1	1	0	NBC/FM	Road
		2. Police Baracks		230	Kimbe UC	229	32	115	06.05.23	1	1	1	0	NBC/FM	Road
		3. Hospital Camp		256	Kimbe UC	317	48	156	01.05.23	1	1	1	0	NBC/FM	Road
		4. Sandremo		148	Kimbe UC					1					Included Under KBT
		5. Liamo		0	Kimbe UC	117	28	59	10.05.23	1	1	1	0	NBC/FM	Road
		KBT		0	Kimbe UC	996	210	483	01.05.23	1	1	1	0	NBC/FM	Road
		<b>MOSA RURAL</b>	<b>57,944</b>	<b>52,942</b>		<b>60,095</b>	<b>9,805</b>	<b>27,547</b>		<b>51</b>	<b>49</b>	<b>0</b>	<b>7,841</b>	<b>50</b>	
		1. GAMAPOLI	4,881	8,234		9,563	1,561	4,379		8	7	0	1,299		
		1. Mopili	684	785	Buvusi HC	1,033	177	470	30.03.23	1	1	0	175	NBC	Road
		Ru	NEW	NEW	Buvusi HC	391	85	186	18/21.04.23	1	1	0	50	NBC	Road
		2. Galai 02 Settlement	2,020	2,652	Buvusi HC	2,536	489	1,167	31.03.23	1	1	0	429	NBC	Road
		3. Malalimi (Div. 1 & 2)	2,177	1,422	Buvusi HC	1,061	242	490	30.03.23	1	1	0	233	NBC	Road
		4. Malalimi (Div. 9 & 17)		2,142	Buvusi HC	2,625	322	1,187	02-04.03.23	1	1	0	215	NBC	Road
		5. Lilimo/Sege/Dry Wara		396	Buvusi HC	897	123	422	30.03.23	1	1	0	100	NBC	Road
		6. Rigula Estate		837	Buvusi HC	1,020	123	457	14.04.23	1	1	0	97	NBC	Road
		7. Moroa Compound		0	Buvusi HC					1					Under Malalimi Div 9
		8. Gamapoli		0	Buvusi HC										It's the ward's name.
		2. BUGAL	12,929	10,062		11,701	1,658	5,447		3	3	0	1,447		
		1. Buvussi Settlement	8,266	6,558	Buvusi HC	6,972	984	3,248	02-04.04.23	1	1	0	916	NBC	Road
		2. Galai 1 Sewtment	4,664	3,504	Buvusi HC	4,475	633	2,085	02-04.04.23	1	1	0	503	NBC	Road
		3. Buvusi Station		NEW	Buvusi HC	254	41	114	21.04.23	1	1	0	28	NBC	Road
		3. KAVUI	7,521	7,074		7,272	1,213	3,251		1	1	0	949		
		1. Kavui Settlement	7,521	7,074	Buvusi HC	7,272	1,213	3,251	05-07.04.23	1	1	0	949	NBC	Road
		4. KAOPORE	6,458	6,898		8,257	1,180	3,706		6	6	0	760		
		1. Gaongo	2,163	2,268	Buvusi HC	2,155	308	954	08.04.23	1	1	0	221	NBC	Road
		2. Kapore Settlement	3,070	2,953	Buvusi HC	2,793	467	1,217	07-08.04.23	1	1	0	433	NBC	Road
		3. Kapore Community School	446	0	Buvusi HC	191	32	94	07.04.23	1	1	0	33	NBC	Road
		4. Poinini Vovational School	254	1,016	Buvusi HC	308	48	131	12.04.23	1	1	0	46	NBC	Road
		5. Wara Kindam	525	661	Buvusi HC	306	56	152	07.04.23	1	1	0	27	NBC	Road
		6. Morobe Road		NEW	Buvusi HC	2,504	269	1,158	10.04.23	1	1	0	0	NBC	Road
		5. LAHERI	2,620	1,651		2,415	492	1,154		6	6	0	87		
		1. Mosa	1,782	944	Buvusi HC	1,522	291	727	08.04.23	1	1	0	87	NBC	Road
		2. Leim	497	423	Buvusi HC	527	112	237	07.03.23	1	1	0	0	NBC	Helicopter (Haword Eka)
		3. Karip	63	24	Buvusi HC	26	5	10	07.03.23	1	1	0	0	NBC	Helicopter (Haword Eka)
		4. Mingara	70	101	Buvusi HC	106	25	50	07.03.23	1	1	0	0	NBC	Helicopter (Billie Pala)
		5. Posakai	23	76	Buvusi HC	80	23	50	07.03.23	1	1	0	0	NBC	Helicopter (Leon Kava)
		6. Balus	184	83	Buvusi HC	154	36	80	07.03.23	1	1	0	0	NBC	Helicopter (Job Kemi)
		6. BEBERE	4,283	2,655		2,540	511	1,170		4	4	0	319		
		1. Nahavio Opic	2,060	1,293	Mosa HC	1,103	167	500	05.04.23	1	1	0	165	NBC	Road
		2. Bebere Pltn Div. 1	910	501	Mosa HC	559	139	262	02.04.23	1	1	0	0	NBC	Road
		3. Bebere Pltn Div. 2	847	488	Mosa HC	539	136	256	02.04.23	1	1	0	85	NBC	Road
		4. Bebere Pltn Div. 3	467	372	Mosa HC	339	69	152	03.04.23	1	1	0	69	NBC	Road
		7. TAMBA	4,526	3,443		3,599	598	1,614		1	1	0	571		
		1. Tamba Settlement	4,526	3,443	Buvusi HC	3,599	598	1,614	10-12.04.23	1	1	0	571	NBC	Road
		8. SARAKOLOK	9,670	8,862		10,428	1,816	4,880		15	15	0	1,639		
		1. Mingae	478	446	Buvusi HC	699	149	341	19.04.23	1	1	0	112	NBC	Road
		2. Lakiemata CIS	947	352	Buvusi HC	346	50	149	14.04.23	1	1	0	49	NBC	Road
		3. Sarakolok	7,330	6,905	Buvusi HC	456	70	224	14.04.23	1	1	0	31	NBC	Road
		4. Saraklok (Section 1)		NEW	Buvusi HC	722	100	341	14.04.23	1	1	0	100	NBC	Road
		5. Saraklok (Section 2)		NEW	Buvusi HC	579	100	271	14.04.23	1	1	0	92	NBC	Road
		6. Saraklok (Section 3)		NEW	Buvusi HC	1,027	175	464	14.04.23	1	1	0	159	NBC	Road
		7. Saraklok (Section 4)		NEW	Buvusi HC	598	99	268	14.04.23	1	1	0	96	NBC	Road
		8. Saraklok (Section 5)		NEW	Buvusi HC	840	148	400	14.04.23	1	1	0	142	NBC	Road
		9. Saraklok (Section 6)		NEW	Buvusi HC	641	100	294	14.04.23	1	1	0	96	NBC	Road
		10. Saraklok (Section 7)		NEW	Buvusi HC	597	72	277	14.04.23	1	1	0	59	NBC	Road
		11. Saraklok (Section 8)		NEW	Buvusi HC	1,035	121	455	15.04.23	1	1	0	122	NBC	Road
		12. Togulo Plantation	915	803	Buvusi HC	942	250	437	30.03.23	1	1	0	250	NBC	Road
		13. Hark VOP		NEW	Buvusi HC	521	83	255	16.04.23	1	1	0	69	NBC	Road
		14. Kumali VOP		356	Buvusi HC	507	100	254	17.04.23	1	1	0	93	NBC	Road
		15. Awael		NEW	Buvusi HC	918	199	450	16.04.23	1	1	0	169	NBC	Road
		9. MOSA URBAN	5,056	4,063		4,320	776	1,946		7	6	0	770		
		1. Mosa 1	434	0	Buvusi HC	307	69	154	30.03-05.04.23	1	1	0	67	NBC	Road
		2. Mosa 2	1,110	0	Buvusi HC	498	91	220	30.03-05.04.23	1	1	0	91	NBC	Road
		3. Mosa 3	642	694	Buvusi HC	283	36	138	30.03-05.04.23	1	1	0	36	NBC	Road
		4. Mosa 4 (Mill Cmpnd)	611	1,260	Buvusi HC	875	171	412	30.03-05.04.23	1	1	0	171	NBC	Road
		5. Mosa 5 (Main)	912	2,109	Buvusi HC	1,847	325	787	30.03-05.04.23	1	1	0	321	NBC	Road

LLG	WARD	Village	Estimated 2022 Population Based on 2000 Census	2022 Population Estimated Based On 2019	Health Centre	Population Surveyed	House Holds Surveyed	Nets Issued	Date Of Distribution	Villages	Digicel	Bmobile	Houses With Radios	Radio Networks	Comments
		6.Mosa 6	686	0	Buvusi HC	136	25	67	30.03-05.04.23	1	1	0	25	NBC	Road
		7.Mosa 7	660	0	Buvusi HC	374	59	168	30.03-05.04.23	1	1	0	59	NBC	Road
<b>TALASEA RURAL</b>			<b>47,877</b>	<b>64,706</b>		<b>62,082</b>	<b>12,600</b>	<b>30,941</b>		<b>94</b>	<b>98</b>	<b>56</b>	<b>2,371</b>	<b>106</b>	
		<b>1.NALOBU</b>	<b>12,192</b>	<b>25,914</b>		<b>27,507</b>	<b>4,930</b>	<b>13,391</b>		<b>36</b>	<b>36</b>	<b>36</b>	<b>257</b>		
		1.Morokea	1,729	1,166	Kimbe UC2	1,768	346	858	30.04.23	1	1	1	1	NBC/FM	Road
		2.Ruango Community	1,087	2,245	Kimbe UC2	2,136	370	1,042	22.04.23	1	1	1	1	NBC/FM	Road
		3.Morokea Vop 1	1,512	1,252	Kimbe UC2	909	139	436	21.04.23	1	1	1	1	NBC/FM	Road
		4.Huveni /Lobe	1,824	3,069	Kimbe UC2	1,158	218	556	23.04.23	1	1	1	1	NBC/FM	Road
		5.Dagi Settlement (Inc. Rumes	2,487	1,704	Kimbe UC2	1,377	300	569	30.04.23	1	1	1	1	NBC/FM	Road
		6.Kumbango Oil Mill	3,553	3,164	Kimbe UC2	1,091	247	532	20.04.23	1	1	1	1	NBC/FM	Road
		7.Kumbango Division 1		NEW	Kimbe UC2	459	99	221	20.04.23	1	1	1	1	NBC/FM	Road
		8.Kumbango Division 2		NEW	Kimbe UC2	712	149	342	20.04.23	1	1	1	1	NBC/FM	Road
		9. Kumbango Division3		NEW	Kimbe UC2	441	95	212	20.04.23	1	1	1	1	NBC/FM	Road
		7.Morokea VOP 2		2,927	Kimbe UC2	1,926	290	1,004	21.04.23	1	1	1	1	NBC/FM	Road
		8.Morokea VOP 3	886		Kimbe UC2	576	100	276	21.04.23	1	1	1	1	NBC/FM	Road
		9.Morokea VOP 4		523	Kimbe UC2	634	100	310	21.04.23	1	1	1	1	NBC/FM	Road
		Morokea VOP 5		242	Kimbe UC2	358	55	171	21.04.23	1	1	1	1	NBC/FM	Road
		10.Morokea Pasi	0		Kimbe UC2	370	50	179	23.04.23	1	1	1	1	NBC/FM	Road
		11.Morokea Lili	0		Kimbe UC2	391	46	188	23.04.23	1	1	1	1	NBC/FM	Road
		12.Dagi community	297		Kimbe UC2	187	50	90	29.04.23	1	1	1	1	NBC/FM	Road
		13.Dagi Mangoro 1	298		Kimbe UC2	252	50	121	30.04.23	1	1	1	1	NBC/FM	Road
		14.Dagi Mangoro 2	477		Kimbe UC2	611	100	290	30.04.23	1	1	1	1	NBC/FM	Road
		15.Dagi Mangoro 3	839		Kimbe UC2	421	86	201	29.04.23	1	1	1	1	NBC/FM	Road
		16.Dagi Mangoro 4	360		Kimbe UC2	312	76	157	29.04.23	1	1	1	1	NBC/FM	Road
		18.Aling-Tais 1-Bakery	4,324		Kimbe UC2	820	116	390	23.04.23	1	1	1	0	NBC/FM	Road
		19.Aling-Tais 2-Posai Rd		NEW	Kimbe UC2	822	176	397	23.04.23	1	1	1	0	NBC/FM	Road
		20.Aling-Tais 3-Back Page		NEW	Kimbe UC2	976	161	469	23.04.23	1	1	1	0	NBC/FM	Road
		21.Aling-Mambu Comp		NEW	Kimbe UC2	941	150	623	23.04.23	1	1	1	0	NBC/FM	Road
		22.Aling-Mountain-Bakery Palm		NEW	Kimbe UC2	568	100	275	23.04.23	1	1	1	1	NBC/FM	Road
		23.Aling-626		NEW	Kimbe UC2	223	49	107	28.04.23	1	1	1	0	NBC/FM	Road
		24.Aling-Pdc Comp		NEW	Kimbe UC2	623	95	298	28.04.23	1	1	1	1	NBC/FM	Road
		25.Aling-Kimbe Lodge		NEW	Kimbe UC2	849	143	406	27.04.23	1	1	1	0	NBC/FM	Road
		26.Aling-Morobe Mountain		NEW	Kimbe UC2	626	103	300	26.04.23	1	1	1	96	NBC/FM	Road
		27.Aling-Tavour Comp		NEW	Kimbe UC2	779	116	374	28.04.23	1	1	1	0	NBC/FM	Road
		28.Aling-Pitopito		NEW	Kimbe UC2	218	31	105	09.05.23	1	1	1	14	NBC/FM	Road
		29.Aling-Mountain/RB Rd		NEW	Kimbe UC2	871	150	419	24.04.23	1	1	1	125	NBC/FM	Road
		30.Aling-Nivani Comp		NEW	Kimbe UC2	579	100	277	29.04.23	1	1	1	0	NBC/FM	Road
		31.Aling-Kaibo Comm		NEW	Kimbe UC2	1,367	240	643	29.04.23	1	1	1	0	NBC/FM	Road
		32.Aling-K-West		NEW	Kimbe UC2	522	97	250	27.04.23	1	1	1	0	NBC/FM	Road
		33.Aling-Mountain Central		NEW	Kimbe UC2	634	137	303	23.04.23	1	1	1	0	NBC/FM	Road
		<b>2.BOGE</b>	<b>8,042</b>	<b>17,320</b>		<b>18,001</b>	<b>3,905</b>	<b>8,869</b>		<b>20</b>	<b>20</b>	<b>20</b>	<b>447</b>		
		1.Kulungi	1,176	1,190	Kimbe UC2	1,121	206	538	08.05.23	1	1	1	32	NBC/FM	Road
		2.Tamare	527	575	Kimbe UC2	807	169	390	09.05.23	1	1	1	6	NBC/FM	Road
		3.Ismin	140	1,230	Kimbe UC2	938	162	450	07.05.23	1	1	1	23	NBC/FM	Road
		4.Ismin Barox		550	Kimbe UC2	282	48	137	07.05.23	1	1	1	0	NBC/FM	Road
		5.Ismin Dirty Wara	451		Kimbe UC2	307	46	147	07.05.23	1	1	1	6	NBC/FM	Road
		6.Ismin-Pomaui/Balus Buruk	421		Kimbe UC2	311	58	151	07.05.23	1	1	1	1	NBC/FM	Road
		7.Walindi Plantaion	299		Kimbe UC2	187	39	90	09.05.23	1	1	1	6	NBC/FM	Road
		8.Wandoro	282		Kimbe UC2	164	35	79	08.05.23	1	1	1	2	NBC/FM	Road
		9.Ismin Gravel pit	214		Kimbe UC2	337	50	162	07.05.23	1	1	1	5	NBC/FM	Road
		10.Kori Community		NEW	Kimbe UC2	564	150	271	07.05.23	1	1	1	0	NBC/FM	Road
		4.Mule - Dami	301	0	Haella HC										Covered From Bitokara HC
		5.Numondo Pltn	1,614	958	Haella HC	1,276	236	535	30.03.23	1	1	1	0	NBC Kimbe	Road
		6.Hella Pltn	3,768	3,329	Haella HC	2,942	634	1,532	01.04.23	1	1	1	47	NBC Kimbe	Road
		11.Tili Plantation		282	Haella HC	285	69	128	02.04.23	1	1	1	11	NBC Kimbe	Road
		12.Sapuri Plantation		926	Haella HC	1,512	347	732	29.03.23	1	1	1	6	NBC Kimbe	Road
		13.Daliavu Plantation		1,036	Haella HC	1,052	297	541	24.03.23	1	1	1	0	NBC Kimbe	Road
		Waraston Pltn	809		Haella HC	1,096	227	556	30.03.23	1	1	1	115	NBC Kimbe	Also covered Walindi Pltn
		Silovuti Pltn	2,666		Haella HC	3,055	700	1,489	29.03.23	1	1	1	108	NBC Kimbe	Road
		Numondo Mill	611		Haella HC	730	133	435	30.03.23	1	1	1	78	NBC Kimbe	Road
		7.Walindi Pltn	516	57	Haella HC					1	1	1		NBC Kimbe	Included Under Waraston Pltn
		Garu Plantation		1,433	Haella HC	1,035	299	506	29.03.23	1	1	1	1	NBC Kimbe	Road
		<b>3.GABUNA</b>	<b>3,191</b>	<b>2,909</b>		<b>3,063</b>	<b>716</b>	<b>1,663</b>		<b>4</b>	<b>4</b>	<b>0</b>	<b>387</b>		
		1.Garile	408	338	Bola HC	372	80	197	01.05.23	1	1	0	37	NBC Kimbe	Road
		2.Kilu	1,113	1,129	Bola HC	1,207	299	671	30.04.23	1	1	0	166	NBC Kimbe	Road
		3.Patanga	1,038	812	Bola HC	833	174	437	30.04.23	1	1	0	75	NBC Kimbe	Road
		4.Pasiloke	632	630	Bola HC	651	163	358	30.04.23	1	1	0	109	NBC Kimbe	Road
		<b>4.BOLA</b>	<b>2,438</b>	<b>2,279</b>		<b>2,492</b>	<b>537</b>	<b>1,308</b>		<b>7</b>	<b>7</b>	<b>0</b>	<b>295</b>		
		1.Bola (Incl. Havule	1,474	1,059	Bola HC	1,109	233	573	01.05.23	1	1	0	156	NBC Kimbe	Road
		2.Walopu		156	Bola HC	308	50	162	26.05.23	1	1	0		NBC Kimbe	Road
		3.Kavugara		148	Bola HC	293	59	153	26.05.23	1	1	0		NBC Kimbe	Road
		4.Kua		224	Bola HC	101	24	51	02.05.23	1	1	0	17	NBC Kimbe	Road
		5.Huale		257	Bola HC	202	51	110	03.05.23	1	1	0	40	NBC Kimbe	Road
		6.Navarai Pltn	625	435	Bola HC	357	91	197	30.04.23	1	1	0	60	NBC Kimbe	Road
		7.Garua Pltn	338	0	Bola HC									NBC Kimbe	Plantation Closed
		8. Navuhamate		NEW	Bola HC	122	29	62	02.04.23	1	1	0	22	NBC Kimbe	Existing Village. Missed Previously
		<b>5.WAROU</b>	<b>3,842</b>	<b>2,367</b>		<b>2,290</b>	<b>506</b>	<b>1,180</b>		<b>7</b>	<b>7</b>	<b>0</b>	<b>396</b>		
		1.Bamba	726	548	Bitokara HC	675	143	343	28.05.23	1	1	0	59	NBC Kimbe	Road
		2.Dire	1,027	588	Bitokara HC	492	113	259	28.05.23	1	1	0	73	NBC Kimbe	Road
		3.Kopa	243	199	Bitokara HC	138	32	69	28.05.23	1	1	0	16	NBC Kimbe	Road
		4.Darava	656	209	Bitokara HC	254	49	128	28.05.23	1	1	0	38	NBC Kimbe	Road
		5.Narumatala	490	345	Bitokara HC	258	61	139	28.05.23	1	1	0	63	NBC Kimbe	Road
		6.Bitokara Mission	161	173	Bitokara HC	75	21	38	28.05.23	1	1	0	29	NBC Kimbe	Road

LLG	WARD	Village	Estimated 2022 Population Based on 2000 Census	2022 Population Estimated Based On 2019	Health Centre	Population Surveyed	House Holds Surveyed	Nets Issued	Date Of Distribution	Villages	Digicel	Bmobile	Houses With Radios	Radio Networks	Comments
		7.Talasea Mission	541	305	Bitokara HC	398	87	204	28.05.23	1	1	0	118	NBC Kimbe	Road
		<b>6.TABEKEMELI</b>	<b>3,003</b>	<b>3,477</b>		<b>857</b>	<b>200</b>	<b>452</b>		<b>2</b>	<b>5</b>	<b>0</b>	<b>0</b>		
		1.Pangalu	1,129	1,060	Bitokara HC	218	50	110	Held In Trust	1	1	0	0	NBC Kimbe	Survey Done. Nets Held at HC
		2.Waganakai	1,204	1,108	Bitokara HC						1	0	0	NBC Kimbe	Security Issues, Not Covered
		3.Rakaboku	670	551	Bitokara HC						1	0	0	NBC Kimbe	Displaced, No Longer a village
		4.Lotogam Plantation		187	Bitokara HC						1	0	0	NBC Kimbe	Displaced, No Longer a village
		5.Walupai Plantation		571	Bitokara HC	639	150	342	14.05.23	1	1	0	0	NBC Kimbe	Road
		<b>7.BULU</b>	<b>2,114</b>	<b>2,838</b>		<b>614</b>	<b>153</b>	<b>317</b>		<b>1</b>	<b>3</b>	<b>0</b>	<b>123</b>	NBC Kimbe	
		1.Buludava	821	631	Bitokara HC									NBC Kimbe	Security Issues, Not Covered
		2.Bulumuri	786	296	Bitokara HC						1	0		NBC Kimbe	Security Issues, Not Covered
		3.Kintaku	506	852	Bitokara HC						1	0		NBC Kimbe	Security Issues, Not Covered
		4.Lolokoru Plantation		926	Bitokara HC	614	153	317	Held In Trust	1	1	0	123	NBC Kimbe	Survey Done. Nets Held at HC
		5. Vagori		131	Bitokara HC										Security Issues, Not Covered
		<b>8.VALUPAI</b>	<b>3,420</b>	<b>2,555</b>		<b>2,454</b>	<b>554</b>	<b>1,268</b>		<b>4</b>	<b>4</b>	<b>0</b>	<b>258</b>	NBC Kimbe	
		1.Buluwara	747	652	Bitokara HC	647	138	326	16.05.23	1	1	0	48	NBC Kimbe	Road/Boat
		2.Komavavo	532	333	Bitokara HC	447	106	225	16.05.23	1	1	0	67	NBC Kimbe	Road/Boat
		3.Liapo	1,334	1,008	Bitokara HC	841	196	440	Held In Trust	1	1	0	53	NBC Kimbe	Survey Done. Nets Held at HC
		4.Valupai	807	562	Bitokara HC	519	114	277	16.05.23	1	1	0	90	NBC Kimbe	Road/Boat
		<b>9.BALIONDO</b>	<b>5,279</b>	<b>2,924</b>		<b>3,203</b>	<b>715</b>	<b>1,668</b>		<b>7</b>	<b>6</b>	<b>0</b>	<b>167</b>	NBC Kimbe	
		1.Bagum	733	597	Bitokara HC	487	99	252	15.05.23	1	1	0	17	NBC Kimbe	Road/Boat
		2.Garu	987	1,067	Bitokara HC	1,232	250	640	14.05.23	1	1	0	71	NBC Kimbe	Boat
		3.Kambili	786	574	Bitokara HC	336	75	173	14.05.23	1	1	0	21	NBC Kimbe	Boat
		4.Minda	371	195	Bitokara HC	269	77	149	14.05.23	1	0	0	0	NBC Kimbe	Boat
		5.Harongo	236	150	Bitokara HC	206	68	106	14.05.23	1	1	0	40	NBC Kimbe	Boat
		6.Matoto	401	341	Bitokara HC	266	59	137	14.05.23	1	1	0	18	NBC Kimbe	Boat
		7.Garu Plantation	1,766	0	Bitokara HC									NBC Kimbe	Covered from Haella HC
		8.Nave (An original village)		NEW	Bitokara HC	407	87	211	14.05.230	1	1	0	0	NBC Kimbe	Never before covered
		<b>10.BUNGA</b>	<b>4,356</b>	<b>2,123</b>		<b>1,601</b>	<b>384</b>	<b>825</b>		<b>6</b>	<b>6</b>	<b>0</b>	<b>41</b>	NBC Kimbe	
		1.Dami	1,239	616	Bola HC	686	144	351	26.05.23	1	1	0	0	NBC Kimbe	Road
		2.Ganeboku	1,514	935	Bola HC	259	105	155	26.05.23	1	1	0	0	NBC Kimbe	Road
		3.Komarake	474	267	Bitokara HC	241	50	113	Held In Trust	1	1	0	38	NBC Kimbe	Survey Done. Nets Held at HC
		4.Matanegavai	579	91	Bitokara HC	238	50	117	Held In Trust	1	1	0	3	NBC Kimbe	Survey Done. Nets Held at HC
		5.Narunegeru	261	49	Bitokara HC	12	5	8	Held In Trust	1	1	0	0	NBC Kimbe	Survey Done. Nets Held at HC
		6.Namova	289	165	Bitokara HC	165	30	81	Held In Trust	1	1	0	0	NBC Kimbe	Survey Done. Nets Held at HC
		7.Narunegeru		0	Bitokara HC										Same as 5.Narunegeru
		8.Namova		0	Bitokara HC										Same as 6.Namova

ANNEX TWO

WEST NEW BRITAIN PROVINCE  
WEST NEW BRITAIN POPULATION 2022  
LLIN DISTRIBUTION SUMMARY SHEET

LLG	WARD	Village	Estimated 2022 Population Based on 2000 Census	2022 Population Estimated Based On 2019	Health Centre	Population Surveyed	House Holds Surveyed	Nets Issued	Date Of Distribution	Villages	Digicel	Bmobile	Houses With Radios	Radio Networks	Comments
<b>KANDRIAN \ GLOUCESTER</b>			<b>93,377</b>	<b>105,776</b>		<b>100,868</b>	<b>18,298</b>	<b>50,990</b>		<b>334</b>	<b>239</b>	<b>45</b>	<b>2,881</b>	<b>130</b>	
<b>1.GASMATA RURAL</b>			<b>15,104</b>	<b>14,821</b>		<b>15,323</b>	<b>2,663</b>	<b>7,312</b>		<b>46</b>	<b>42</b>	<b>0</b>	<b>586</b>	<b>47</b>	
	1.AMIO		2,971	2,512		2,537	481	1,232		12	8	0	28		
	1.Amio		1,175	238	Amio HC	0	0	0			0	0	0		Name of the ward.
	2.Amio Primary School			NEW	Amio HC	38	6	18	13.02.23	1	1	0	1	NBC	Road/Boat
	3.Kaskas		608	524	Amio HC	472	85	230	13.02.23	1	1	0	0	NBC	Road/Boat
	4.Amelei		290	257	Amio HC	280	29	133	14.02.23	1	0	0	1	NBC	Boat
	5.Awirwir		335	370	Amio HC	374	64	180	14.02.23	1	1	0	0	NBC	Boat
	6.Amio Govt. Stn		116	61	Amio HC	22	6	13	15.02.23	1	1	0	0	NBC	Road/Boat
	7.Pere Logging Camp			0	Amio HC	143	45	71	13.02.23	1	0	0	0	NBC	Road/Boat
	8.Amio Logging Camp		447	NEW	Amio HC	0	0	0			0	0	0	NBC	Closed
	Aluo (Amio)			436	Amio HC	394	80	191	13.02.23	1	1	0	0	NBC	Road/Boat
	Sausau (Amio)			167	Amio HC	142	27	68	15.02.23	1	1	0	1	NBC	Road/Boat
	Sanik (Amio)			259	Amio HC	226	46	114	13.02.23	1	0	0	0	NBC	Road/Boat
	Leplep (Amio)			116	Amio HC	312	60	152	13.02.23	1	1	0	24	NBC	Road/Boat
	Amio Mission Stn			0	Amio HC	19	5	9	13.02.23	1	1	0	1	NBC	Road/Boat
	Pere (Amio)			85	Amio HC	115	28	53	13.02.23	1	0	0	0	NBC	Road/Boat
	<b>2.PORONGA</b>		<b>2,340</b>	<b>2,399</b>		<b>2,819</b>	<b>431</b>	<b>1,366</b>		<b>6</b>	<b>6</b>	<b>0</b>	<b>158</b>		
	1.Akiwak		553	394	Gasmata HC	741	98	366	18.02.23	1	1	0	42	NBC	Boat
	2.Atui		521	695	Amio HC	730	114	356	14.02.23	1	1	0	13	NBC	Boat
	3.Lulakevi (Valonguo)		427	431	Gasmata HC	368	60	177	21.02.23	1	1	0	49	NBC	Boat
	4.Poronga		273	307	Gasmata HC	331	59	151	20.02.23	1	1	0	52	NBC	Boat
	5.Penlolo		384	409	Amio HC	494	68	237	14.02.23	1	1	0	2	NBC	Boat
	6.Omesa		102	163	Amio HC	155	32	79	14.02.23	1	1	0	0	NBC	Boat
	7.Akaka (Zitus)		79	0	Gasmata HC										Non Existant
	<b>3.TESOPOL</b>		<b>1,275</b>	<b>1,338</b>		<b>1,228</b>	<b>230</b>	<b>594</b>		<b>5</b>	<b>5</b>	<b>0</b>	<b>63</b>		
	1.Akam		385	416	Gasmata HC	325	62	158	17.02.23	1	1	0	24	NBC	Boat
	2.Aringring		335	340	Gasmata HC	341	63	165	17.02.23	1	1	0	25	NBC	Boat
	3.Avihain		168	158	Gasmata HC	167	31	82	17.02.23	1	1	0	8	NBC	Boat
	4.Avrin (Incl. Pokolok & Aka)		270	356	Gasmata HC	259	50	122	17.02.23	1	1	0	6	NBC	Boat
	5.Gasmata Govt. Stn		117	68	Gasmata HC	136	24	67	22.02.23	1	1	0		NBC	Boat
	<b>4.AKOLET</b>		<b>1,430</b>	<b>1,491</b>		<b>1,410</b>	<b>236</b>	<b>699</b>		<b>4</b>	<b>4</b>	<b>0</b>	<b>122</b>		
	1.Akur		268	306	Gasmata HC	313	47	153	17.02.23	1	1	0	12	NBC	Boat
	2.Anato		297	330	Gasmata HC	309	50	152	17.02.23	1	1	0	25	NBC	Boat
	3.Kalagen		689	620	Gasmata HC	562	99	286	18.02.23	1	1	0	59	NBC	Boat
	4.Amgen Camp/Awangli		176	234	Gasmata HC	226	40	108	18.02.23	1	1	0	26	NBC	Boat
	<b>5.AIKON</b>		<b>2,442</b>	<b>2,711</b>		<b>2,793</b>	<b>466</b>	<b>1,365</b>		<b>9</b>	<b>9</b>	<b>0</b>	<b>96</b>		
	1.Ami		255	274	Gasmata HC	243	42	120	17.02.23	1	1	0	19	NBC	Road
	2.Au (Incl.Poprokuo)		390	507	Gasmata HC	529	82	258	18.02.23	1	1	0	32	NBC	Boat
	3.Avio		463	562	Gasmata HC	579	89	287	18.03.23	1	1	0	7	NBC	Boat
	4.Getmata		206	310	Gasmata HC	284	46	134	19.02.23	1	1	0	3	NBC	Road
	5.Luongil		85	0	Gasmata HC	63	13	28	18.02.23	1	1	0	0	NBC	Boat
	6.Ngati		84	55	Gasmata HC	94	22	57	09.02.23	1	1	0	0	NBC	Road
	7.Menpa (Singilva)		273	222	Gasmata HC	198	40	87	23.02.23	1	1	0	0	NBC	Road
	8.Wakis		209	214	Gasmata HC	240	47	118	19.02.23	1	1	0	4	NBC	Road
	9.Zebu		476	568	Gasmata HC	563	85	276	19.02.23	1	1	0	31	NBC	Road
	<b>6.KASUIO</b>		<b>4,118</b>	<b>3,670</b>		<b>3,861</b>	<b>696</b>	<b>1,758</b>		<b>7</b>	<b>7</b>	<b>0</b>	<b>83</b>		
	1.Abilingi		731	474	Melengelo HC	755	119	338	13.02.23	1	1	0	4	NBC	Boat
	2.Ayuvet		468	561	Melengelo HC	544	101	248	14.02.23	1	1	0	2	NBC	Boat
	3.Atuvo		453	584	Melengelo HC	525	86	245	13.02.23	1	1	0	7	NBC	Boat
	4.Akaveng		330	394	Melengelo HC	399	76	186	14.02.23	1	1	0	1	NBC	Boat
	5.Melenglo		699	575	Melengelo HC	784	168	365	14.02.23	1	1	0	57	NBC	Boat
	6.Honevio (Incl. Nioken & M)		598	548	Melengelo HC	574	96	244	15.02.23	1	1	0	1	NBC	Road/Trek
	7.Alevo (Aj Camp)		456	533	Melengelo HC	280	50	132	14.02.23	1	1	0	11	NBC	Boat
	8.Menvuvu Logging Camp1		384	0	Melengelo HC										Logging camp closed
	<b>7.ASIRIM</b>		<b>528</b>	<b>700</b>		<b>675</b>	<b>123</b>	<b>298</b>		<b>3</b>	<b>3</b>	<b>0</b>	<b>36</b>		
	1.Asirim		293	408	Gasmata HC	462	74	194	20.02.23	1	1	0	32	NBC	Road from Gasmata HC
	2.Aparas		153	157	Gasmata HC	116	29	58	20.02.23	1	1	0	1	NBC	Road from Gasmata HC then trek 1 day
	3.Zikar		82	135	Gasmata HC	97	20	46	20.02.23	1	1	0	3	NBC	Road from Gasmata HC
	<b>2.GLOUCESTER RURAL</b>		<b>15,591</b>	<b>18,033</b>		<b>16,720</b>	<b>3,658</b>	<b>8,646</b>		<b>65</b>	<b>64</b>	<b>0</b>	<b>875</b>	<b>38</b>	
	<b>1 AUMO</b>		<b>2,055</b>	<b>2,952</b>		<b>2,644</b>	<b>432</b>	<b>1,277</b>		<b>6</b>	<b>6</b>	<b>0</b>	<b>28</b>		
	1.Aumo		613	630	Sagsag HC	551	89	327	14.02.23	1	1	0	0		Road/Boat
	2.Gilinit		493	737	Gloucester HC	729	98	332	20.02.23	1	1	0	4	NBC Kimbe	Road
	3.Gilva		300	451	Sagsag HC	373	69	197	14.02.25	1	1	0	0		Road/Boat
	4.Namatoto		335	505	Gloucester HC	453	70	186	20.02.23	1	1	0	17	NBC Kimbe	Road
	5.Rilmen		313	427	Gloucester HC	426	74	166	20.02.23	1	1	0	7	NBC Kimbe	Road
	6.Aumo Logging camp			157	Sagsag HC	112	32	69	14.02.28	1	1	0	0		Road/Boat
	7.Geren Logging camp			45	Sagsag HC										Non Existant
	<b>2 AISEGA</b>		<b>1,059</b>	<b>1,182</b>		<b>1,013</b>	<b>202</b>	<b>592</b>		<b>4</b>	<b>4</b>	<b>0</b>	<b>73</b>		
	1.Aisega		434	425	Sagsag HC	340	61	193	14.02.23	1	1	0	27		Boat
	2.Ura		74	116	Sagsag HC	80	19	53	14.02.23	1	1	0	5		Boat
	3.Walawalopua		174	178	Sagsag HC	154	32	93	14.02.23	1	1	0	4		Boat
	4.Witnare		377	463	Sagsag HC	439	90	253	14.02.23	1	1	0	37		Boat
	<b>3 SOMATE</b>		<b>2,036</b>	<b>2,185</b>		<b>2,281</b>	<b>413</b>	<b>1,294</b>		<b>8</b>	<b>8</b>	<b>0</b>	<b>195</b>		
	1.Aimaga		218	274	Sagsag HC	265	44	150	16.02.23	1	1	0	19		Trek

LLG	WARD	Village	Estimated 2022 Population Based on 2000 Census	2022 Population Estimated Based On 2019	Health Centre	Population Surveyed	House Holds Surveyed	Nets Issued	Date Of Distribution	Villages	Digicel	Bmobile	Houses With Radios	Radio Networks	Comments
<b>KANDRIAN \ GLOUCESTER</b>			<b>93,377</b>	<b>105,776</b>		<b>100,868</b>	<b>18,298</b>	<b>50,990</b>		<b>334</b>	<b>239</b>	<b>45</b>	<b>2,881</b>	<b>130</b>	
		2.Aimola	416	403	Sagsag HC	429	89	248	16.02.23	1	1	0	69		Trek
		3.Aipate	178	305	Sagsag HC	281	50	154	16.02.23	1	1	0	15		Trek
		4.Gie	352	415	Sagsag HC	407	76	230	16.02.23	1	1	0	15		Trek
		5.Potopua	302	243	Sagsag HC	278	40	157	16.02.23	1	1	0	12		Trek
		6.Sagsag	223	307	Sagsag HC	296	58	166	16.02.23	1	1	0	31		Trek
		7.Sikal	178	184	Sagsag HC	193	31	106	16.02.23	1	1	0	9		Trek
		8.Sagsag Mission	171	54	Sagsag HC	132	25	83	16.02.23	1	1	0	25		Trek
4	KILENGE		<b>3,380</b>	<b>3,480</b>		<b>3,359</b>	<b>642</b>	<b>1,688</b>		<b>11</b>	<b>11</b>	<b>0</b>	<b>539</b>		
		1.Laut	355	437	Kilenga HC	392	85	194	10.02.23	1	1	0	64		Boat
		2.Ongaia	607	610	Kilenga HC	660	118	321	08.02.23	1	1	0	111		Boat
		3.Masele(Palele)	174	186	Kilenga HC	227	43	102	09.02.23	1	1	0	36		Boat
		4.Potne	758	786	Kilenga HC	737	125	383	08.02.23	1	1	0	117		Road
		5.Tauale	339	102	Kilenga HC	132	25	66	10.02.23	1	1	0	24		Boat
		6.Ulamainge	412	356	Kilenga HC	376	81	191	09.02.23	1	1	0	75		Boat
		7.Waremo	434	443	Kilenga HC	369	74	198	09.02.23	1	1	0	72		Boat
		8.Sumel	158	221	Kilenga HC	170	30	85	10.02.23	1	1	0	4		Road
		9.Kilenge Mission	144	98	Kilenga HC	54	13	31	08.02.23	1	1	0	13		Road
		10.Itavala		56	Kilenga HC	66	14	37	13.02.23	1	1	0	0		Boat
		11.Sika		185	Kilenga HC	176	34	80	10.02.23	1	1	0	23		Boat
5	AIRAGILPUA		<b>1,870</b>	<b>2,229</b>		<b>2,253</b>	<b>511</b>	<b>1,088</b>		<b>8</b>	<b>8</b>	<b>0</b>	<b>9</b>		
		1.Airagilpua	523	499	Gloucester HC	502	100	238	20-22.02.23	1	1	0	0	NBC Kimbe	Road
		2.Asalmepua	241	369	Gloucester HC	346	87	162	23.02.23	1	1	0	4	NBC Kimbe	Road
		3.Ailopua	69	166	Gloucester HC	160	33	78	20.02.23	1	1	0	5	NBC Kimbe	Road
		4.Ararau	288	323	Gloucester HC	315	58	149	20.02.23	1	1	0	0	NBC Kimbe	Road
		5.Kakumo	235	282	Gloucester HC	287	60	139	22.02.23	1	1	0	0	NBC Kimbe	Road
		6.Orelmo	139	188	Gloucester HC	208	78	113	21.02.23	1	1	0	0	NBC Kimbe	Road
		7.Rovata	275	266	Gloucester HC	276	71	134	20.02.23	1	1	0	0	NBC Kimbe	Road
		8.Makuar	101	136	Gloucester HC	159	24	75	22.02.23	1	1	0	0	NBC Kimbe	Road
6	GAKIU		<b>2,678</b>	<b>3,109</b>		<b>2,439</b>	<b>924</b>	<b>1,447</b>		<b>15</b>	<b>14</b>	<b>0</b>	<b>30</b>		
		1.Garimate	173	177	Gloucester HC	168	105	107	13.02.23	1	1	0	0	NBC Kimbe	Road
		2.Natamou	251	224	Gloucester HC	206	46	103	19.02.23	1	1	0	0	NBC Kimbe	Boat
		3.Naikarop	305	227	Gloucester HC	245	150	168	13.02.23	1	1	0	0	NBC Kimbe	Road
		4.Silimate	258	190	Gloucester HC	253	106	145	13.02.23	1	1	0	0	NBC Kimbe	Boat
		5.Gareng	27	48	Gloucester HC	85	22	42	19.02.23	1	1	0	0	NBC Kimbe	Boat
		6.Waraput	211	225	Gloucester HC	202	66	122	13.02.23	1	1	0	0	NBC Kimbe	Road
		7.Airstrip (Aimsepua)	116	0	Gloucester HC					1					Part of Kilenge Ward
		8.Walau	109	22	Gloucester HC	58	23	35	13.02.23	1	1	0	0	NBC Kimbe	Road
		9.Narolmulia	248	483	Gloucester HC	381	148	238	13.02.23	1	1	0	12	NBC Kimbe	Road
		10.Ausmate	64	175	Gloucester HC	102	22	53	19.02.23	1	1	0	4	NBC Kimbe	Boat
		11.Vem Settlement	233	274	Gloucester HC	257	78	161	12.02.23	1	1	0	13	NBC Kimbe	Road
		12.Galegale Settlement	147	130	Gloucester HC	156	49	85	13.02.23	1	1	0	0	NBC Kimbe	Road
		13.Gloucester Stn	312	283	Gloucester HC	186	80	116	13.02.23	1	1	0	0	NBC Kimbe	Road
		14.Gloucester High School	91	165	Gloucester HC	65	13	34	22.02.23	1	1	0	1	NBC Kimbe	Road
		15. Ginane Logging Camp	134	486	Gloucester HC	75	16	38	22.02.23	1	1	0	0	NBC Kimbe	Road
7	ALAI		<b>1,349</b>	<b>1,391</b>		<b>1,249</b>	<b>275</b>	<b>557</b>		<b>5</b>	<b>5</b>	<b>0</b>	<b>0</b>		
		1.Akonga	471	537	Gloucester HC	529	146	228	19.02.23	1	1	0	0	NBC Kimbe	Boat
		2.Alaido	364	339	Gloucester HC	295	52	136	19.02.23	1	1	0	0	NBC Kimbe	Boat
		3.Bambak	188	149	Gloucester HC	138	31	69	20.02.23	1	1	0	0	NBC Kimbe	Boat
		4.Mareka	171	201	Gloucester HC	148	24	65	19.02.23	1	1	0	0	NBC Kimbe	Boat
		5.Namaramanga	156	165	Gloucester HC	139	22	59	19.02.23	1	1	0	0	NBC Kimbe	Boat
8	GURRISSI		<b>1,163</b>	<b>1,505</b>		<b>1,482</b>	<b>259</b>	<b>703</b>		<b>8</b>	<b>8</b>	<b>0</b>	<b>1</b>		
		1.Gurrissi	233	258	Gloucester HC	371	62	204	19.02.23	1	1	0	0	NBC Kimbe	Boat
		2.Kokopo	463	329	Gloucester HC	366	50	197	19.02.23	1	1	0	0	NBC Kimbe	Boat
		3.Malasongo	101	312	Gloucester HC	192	42	74	20.02.23	1	1	0	0	NBC Kimbe	Boat
		4.Siamatai	158	116	Gloucester HC	119	20	46	20.02.23	1	1	0	0	NBC Kimbe	Boat
		5.Kimbe (Niuniuia)	44	230	Gloucester HC	166	31	75	19.02.23	1	1	0	0	NBC Kimbe	Boat
		6.Garaiai	54	108	Gloucester HC	110	20	45	20.02.23	1	1	0	0	NBC Kimbe	Boat
		7.Gurrissi Comm. School	112	154	Gloucester HC	38	7	16	20.02.23	1	1	0	1	NBC Kimbe	Boat
		8.Kolwub		NEW	Gloucester HC	120	27	46	20.02.23	1	1	0	0	NBC Kimbe	Boat
<b>3.KANDRIAN COASTAL RURA;L</b>			<b>21,110</b>	<b>22,080</b>		<b>20,035</b>	<b>3,544</b>	<b>10,348</b>		<b>57</b>	<b>33</b>	<b>0</b>	<b>61</b>	<b>0</b>	
1	AMNGE		<b>1,463</b>	<b>1,765</b>		<b>1,652</b>	<b>265</b>	<b>867</b>		<b>6</b>	<b>6</b>	<b>0</b>	<b>0</b>		
		1.Ambonge	240	193	Kandrian HC	134	26	73	13.02.23	1	1	0	0		Boat
		2.Asepsep	571	651	Kandrian HC	579	86	318	13.02.23	1	1	0	0		Boat
		3.Suvulo (Huavi)	49	160	Kandrian HC	154	26	82	13.02.23	1	1	0	0		Boat
		4.Akur	251	335	Kandrian HC	296	50	144	13.02.23	1	1	0	0		Boat
		5.Apohun	253	194	Kandrian HC	271	44	139	13.02.23	1	1	0	0		Trek
		6.Ahli Comm. School	99	232	Kandrian HC	218	33	111	13.02.23	1	1	0	0		Boat
2	APALIK		<b>935</b>	<b>1,248</b>		<b>962</b>	<b>176</b>	<b>467</b>		<b>4</b>	<b>4</b>	<b>0</b>	<b>0</b>		
		1.Akinum	307	627	Kandrian HC	458	78	220	13.02.23	1	1	0	0		Boat
		2.Kuril/Aum	144	248	Kandrian HC	188	35	95	13.02.23	1	1	0	0		Boat
		3.Apalik	149	245	Kandrian HC	256	49	122	13.02.23	1	1	0	0		Boat
		4.Arengreng Base Camp (A	335	129	Kandrian HC	60	14	30	13.02.23	1	1	0	0		Boat
3	AEGLIP		<b>1,753</b>	<b>2,477</b>		<b>2,278</b>	<b>444</b>	<b>1,178</b>		<b>5</b>	<b>5</b>	<b>0</b>	<b>0</b>		
		1.Apugi	716	0	Kandrian HC										Non existent
		2.Aviklo	784	0	Kandrian HC										Non existent
		3.Kalamlo	253	299	Kandrian HC	363	62	182	16.02.23	1	1	0	0		Road
		4.Apugi Mainland		365	Kandrian HC	314	64	160	16.02.23	1	1	0	0		Road
		5.Apugi Island		349	Kandrian HC	336	65	176	16.02.23	1	1	0	0		Road
		6.Aviklo Mainland		569	Kandrian HC	482	92	244	16.02.23	1	1	0	0		Road
		7.Aviklo Island		895	Kandrian HC	783	161	416	16.02.23	1	1	0	0		Boat
4	KANDRIAN		<b>659</b>	<b>1,894</b>		<b>1,383</b>	<b>259</b>	<b>719</b>		<b>4</b>	<b>4</b>	<b>0</b>	<b>0</b>		
		1.Ais	456	565	Kandrian HC	387	58	195	14.02.23	1	1	0	0		Road
		2. Akanglo	203	262	Kandrian HC	116	20	57	14.02.23	1	1	0	0		Road

LLG	WARD	Village	Estimated 2022 Population Based on 2000 Census	2022 Population Estimated Based On 2019	Health Centre	Population Surveyed	House Holds Surveyed	Nets Issued	Date Of Distribution	Villages	Digicel	Bmobile	Houses With Radios	Radio Networks	Comments
<b>KANDRIAN \ GLOUCESTER</b>			<b>93,377</b>	<b>105,776</b>		<b>100,868</b>	<b>18,298</b>	<b>50,990</b>		<b>334</b>	<b>239</b>	<b>45</b>	<b>2,881</b>	<b>130</b>	
		3.Kandrian Station		745	Kandrian HC	648	116	333	14.02.23	1	1	0	0		Road
		4.Turuk/Airport		322	Kandrian HC	232	65	134	14.02.23	1	1	0	0		Road
5	KAUL		<b>1,130</b>	<b>1,523</b>		<b>1,302</b>	<b>216</b>	<b>663</b>		<b>4</b>	<b>3</b>	<b>0</b>	<b>0</b>		
		1.Alimbit	359	610	Kandrian HC	413	66	202	12.02.23	1	1	0	0		Road
		2.Analo	273	412	Kandrian HC	401	60	204	12.02.23	1	1	0	0		Road
		3.Yumielo	416	501	Kandrian HC	488	90	257	12.02.23	1	1	0	0		Road
		4.Pomete	82	0	Kandrian HC					1					Covered under Yumielo
6	LOKO NAMBIS		<b>1,562</b>	<b>1,737</b>		<b>1,673</b>	<b>281</b>	<b>841</b>		<b>4</b>	<b>4</b>	<b>0</b>	<b>0</b>		
		1.Amgoreng	315	312	Kandrian HC	304	48	148	15.02.23	1	1	0	0		Boat
		2.Aresvo (Bupon)	298	251	Kandrian HC	260	40	132	15.02.23	1	1	0	0		Boat
		3.Okur	714	930	Kandrian HC	969	171	493	15.02.23	1	1	0	0		Boat
		4.Aulo	235	245	Kandrian HC	140	22	68	15.02.23	1	1	0	0		Boat
7	IOUDO		<b>3,064</b>	<b>2,557</b>		<b>2,823</b>	<b>498</b>	<b>1,413</b>		<b>5</b>	<b>5</b>	<b>0</b>	<b>0</b>		
		1.Murien	990	876	Kandrian HC	1,063	200	533	15.02.23	1	1	0	0		Boat
		2.Sapolou	312	287	Kandrian HC	173	34	87	15.02.23	1	1	0	0		Boat
		3.Sara	696	492	Kandrian HC	537	89	271	15.02.23	1	1	0	0		Boat
		4.Wasum	970	722	Kandrian HC	766	125	379	15.02.23	1	1	0	0		Boat
		5.Poliaeng	96	179	Kandrian HC	284	50	143	15.02.23	1	1	0	0		Boat
8	VINUM		<b>2,863</b>	<b>2,680</b>		<b>2,562</b>	<b>440</b>	<b>1,281</b>		<b>4</b>	<b>0</b>	<b>0</b>	<b>0</b>		
		1.Dimgalu	732	542	Piilo HC	721	126	357	Held In Trust	1	0	0	0		Boat
		2.Lupon	530	508	Piilo HC	419	50	208	Held In Trust	1	0	0	0		Boat
		3.Meselia	618	348	Piilo HC	410	76	209	Held In Trust	1	0	0	0		Boat
		4.Wako	907	1,107	Piilo HC	1,012	188	507	Held In Trust	1	0	0	0		Boat
		5.East Arowe Logging Cam	75	175	Piilo HC										Camp Closed
9	PILILO		<b>1,540</b>	<b>1,376</b>		<b>1,209</b>	<b>219</b>	<b>633</b>		<b>6</b>	<b>0</b>	<b>0</b>	<b>0</b>		
		1.Pailkmete	409	313	Piilo HC	251	47	132	Held In Trust	1	0	0	0		Boat
		2.Winguru	365	252	Piilo HC	254	40	134	Held In Trust	1	0	0	0		Boat
		3.Amulut (Incl. Arowe Pltn)	298	415	Piilo HC	354	71	180	Held In Trust	1	0	0	0		Boat
		4.Malange	154	117	Piilo HC	101	15	51	Held In Trust	1	0	0	0		Boat
		5.Wapmete	228	173	Piilo HC	149	28	81	Held In Trust	1	0	0	0		Boat
		6.Piilo Mission	85	107	Piilo HC	100	18	55	Held In Trust	1	0	0	0		Boat
10	AGULO		<b>1,425</b>	<b>1,659</b>		<b>1,348</b>	<b>257</b>	<b>757</b>		<b>4</b>	<b>0</b>	<b>0</b>	<b>0</b>		
		1.Kauptumete	236	278	Piilo HC	125	42	127	Held In Trust	1	0	0	0		Boat
		2.Kumbun	625	467	Piilo HC	369	75	204	Held In Trust	1	0	0	0		Boat
		3.Maklo	226	374	Piilo HC	358	68	185	Held In Trust	1	0	0	0		Boat
		4.Dougou	337	541	Piilo HC	496	72	241	Held In Trust	1	0	0	0		Boat
11	IVANGA		<b>1,832</b>	<b>1,961</b>		<b>1,727</b>	<b>323</b>	<b>953</b>		<b>7</b>	<b>1</b>	<b>0</b>	<b>10</b>		
		1.Benim	174	215	Sauren HC	219	41	113	07.02.23	1	0	0	0		Boat
		2.Borowai	209	256	Sauren HC	280	45	134	07.02.23	1	0	0	1		Boat
		3.Sauren	756	597	Sauren HC	601	93	320	09.02.23	1	0	0	9		Road
		4.Talia (Woro)	206	227	Sauren HC	262	49	134	07.02.23	1	0	0	0		Road
		5.Palamang	260	233	Sauren HC	270	49	140	04.02.23	1	1	0	0		Road
		6.Sauren Base Camp	226	146	Sauren HC										Camp Closed
		7. Mado		108	Sauren HC	84	15	52	06.02.23	1	0	0	0		Boat
		8. Kuangas		179	Sauren HC	11	31	60	07.02.23	1	0	0	0		Road
12	NAPLAVUI		<b>1,611</b>	<b>1,202</b>		<b>1,116</b>	<b>166</b>	<b>576</b>		<b>4</b>	<b>1</b>	<b>0</b>	<b>51</b>		
		1.Anepmete	268	496	Sauren HC	438	72	232	05.02.23	1	1	0	6		Boat
		2.lungpun	330	359	Sauren HC	317	42	155	05.02.23	1	0	0	42		Boat
		3.Molou	218	275	Sauren HC	247	31	126	05.02.23	1	0	0	3		Road
		4.Amlakmete	94	73	Sauren HC	114	21	63	05.02.23	1	0	0	0		Boat
		5.Sipul Base Camp	337	0	Sauren HC										Camp Closed
		6.Anepmete Logging Camp	364	0	Sauren HC										Camp Closed
13	KANDRIAN		<b>1,275</b>	<b>0</b>											
		1.Kandrian 01	659	0	Kandrian HC										Name of the big place
		2.Kandrian 02	617	0	Kandrian HC										Name of the big place
<b>4.KANDRIAN INLAND RURAL</b>			<b>16,783</b>	<b>22,186</b>		<b>19,780</b>	<b>3,591</b>	<b>10,033</b>		<b>83</b>	<b>37</b>	<b>0</b>	<b>0</b>	<b>0</b>	
1	AKIURU		<b>1,446</b>	<b>1,917</b>		<b>1,510</b>	<b>289</b>	<b>785</b>		<b>4</b>	<b>0</b>	<b>0</b>	<b>0</b>		
		1.Paong	359	352	Eseli HC	328	50	162	14-15.02.23	1	0	0	0		Road
		2.Sabdi	282	571	Eseli HC	259	71	146	14-15.02.23	1	0	0	0		Road
		3.Tekarapna	126	285	Eseli HC	270	50	146	14-15.02.23	1	0	0	0		Road
		4.Urin	680	709	Eseli HC	653	118	331	14-15.02.23	1	0	0	0		Road
2	GOGOR		<b>1,864</b>	<b>2,367</b>		<b>2,778</b>	<b>477</b>	<b>1,384</b>		<b>10</b>	<b>0</b>	<b>0</b>	<b>0</b>		
		1. Giring	266	465	Eseli HC	479	79	241	14-15.02.23	1	0	0	0		Road
		2.Ipuk	255	302	Eseli HC	246	50	123	14-15.02.23	1	0	0	0		Road
		3.Kulwango/Gergereng	372	589	Eseli HC	528	84	261	14-15.02.23	1	0	0	0		Road
		4.Lualu	258	211	Eseli HC	207	31	102	14-15.02.23	1	0	0	0		Road
		5.Tekamap	199	175	Eseli HC	137	34	71	14-15.02.23	1	0	0	0		Road
		6.Pinir	139	344	Eseli HC	857	134	417	15-16.02.23	1	0	0	0		Road
		7.Takalang	75	87	Eseli HC	137	29	70	14-15.02.23	1	0	0	0		Road
		8.Seranto	74	105	Eseli HC	95	19	52	14.02.23	1	0	0	0		Road
		9.Tapulpu	116	55	Eseli HC	30	5	15	14.02.23	1	0	0	0		Road
		10.Amak	109	33	Eseli HC	62	12	32	14.02.23	1	0	0	0		Road
3	LOKO BUSH		<b>2,130</b>	<b>2,620</b>		<b>2,404</b>	<b>462</b>	<b>1,213</b>		<b>11</b>	<b>4</b>	<b>0</b>	<b>0</b>		
		1.Awanglo	196	278	Eseli HC	206	48	109	13-14.02.23	1	0	0	0		Road
		2.Eseli	10	0	Eseli HC	35	6	17	13.02.23	1	1	0	0		Vicinity
		3.lakas	77	202	Eseli HC	203	39	96	13.02.23	1	0	0	0		Road
		4.Molo	491	566	Eseli HC	483	89	243	13.02.23	1	1	0	0		Road
		5.Molopun	226	326	Eseli HC	261	50	132	13-14.02.23	1	1	0	0		Road
		6.Seleng	231	384	Eseli HC	390	84	203	13.02.23	1	1	0	0		Road
		7.Alangra	97	120	Eseli HC	174	26	84	13-14.02.23	1	0	0	0		Road
		8.Dinelo	153	133	Eseli HC	76	16	40	13.02.23	1	0	0	0		Road
		9.Amalia	80	57	Eseli HC	43	6	22	13.02.23	1	0	0	0		Vicinity

LLG	WARD	Village	Estimated 2022 Population Based on 2000 Census	2022 Population Estimated Based On 2019	Health Centre	Population Surveyed	House Holds Surveyed	Nets Issued	Date Of Distribution	Villages	Digicel	Bmobile	Houses With Radios	Radio Networks	Comments
<b>KANDRIAN \ GLOUCESTER</b>			<b>93,377</b>	<b>105,776</b>		<b>100,868</b>	<b>18,298</b>	<b>50,990</b>		<b>334</b>	<b>239</b>	<b>45</b>	<b>2,881</b>	<b>130</b>	
		10.Aiumete	437	445	Eseli HC	426	81	213	13-14.02.23	1	0	0	0		Road
		11.Asauro	131	108	Eseli HC	107	17	54	13.02.23	1	0	0	0		Vicinity
4	KALAKIN		<b>647</b>	<b>695</b>		<b>475</b>	<b>65</b>	<b>225</b>		<b>2</b>	<b>0</b>	<b>0</b>	<b>0</b>		
		1. Mang	414	547	Eseli HC	311	31	141	13.02.23	1	0	0	0		Trek
		2.Widat	233	148	Eseli HC	164	34	84	12-13.02.23	1	0	0	0		Road
5	MIU		<b>1,135</b>	<b>1,888</b>		<b>1,539</b>	<b>276</b>	<b>785</b>		<b>8</b>	<b>6</b>	<b>0</b>	<b>0</b>		
		1.Aslingpun	161	162	Eseli HC	230	44	114	12-13.02.23	1	1	0	0		Road
		2.Audi	122	105	Eseli HC	100	18	50	12-13.02.23	1	1	0	0		Road
		3.Aiku	153	193	Eseli HC	228	45	121	12-13.02.23	1	1	0	0		Road
		4.Igi	139	270	Eseli HC	273	46	142	12-13.02.23	1	1	0	0		Road
		5.Pangai	206	299	Eseli HC	232	43	122	12-13.02.23	1	0	0	0		Road
		6.Wail	55	120	Eseli HC	128	23	65	12-13.02.23	1	0	0	0		Road
		7.Esele	104	108	Eseli HC	135	21	71	12-13.02.23	1	1	0	0		Road
		8.Miupak	194	630	Eseli HC	213	36	100	12-13.02.23	1	1	0	0		Road
6	AVET		<b>1,406</b>	<b>1,879</b>		<b>1,664</b>	<b>294</b>	<b>832</b>		<b>7</b>	<b>7</b>	<b>0</b>	<b>0</b>		
		1.Liama	272	280	Kandrian HC2	180	28	98	13.02.23	1	1	0	0		Road
		2.Langarum	295	349	Kandrian HC2	380	74	197	14.02.23	1	1	0	0		Should be covered under Ward 5 of Eseli HC
		3.Lauring	176	353	Kandrian HC2	266	50	130	13.02.23	1	1	0	0		Road
		4.Namaklongklong	166	182	Kandrian HC2	298	49	137	13.02.23	1	1	0	0		Road
		5.Papsa	111	248	Kandrian HC2	160	27	80	13.02.23	1	1	0	0		Road
		6.Amurun	106	177	Kandrian HC2	167	31	82	13.02.23	1	1	0	0		Road
		7.Apoipi	282	289	Kandrian HC2	213	35	108	13.02.23	1	1	0	0		Road
7	AWON		<b>3,134</b>	<b>3,838</b>		<b>3,458</b>	<b>648</b>	<b>1,779</b>		<b>14</b>	<b>12</b>	<b>0</b>	<b>0</b>		
		1.Aka	359	362	Aka HC	394	81	210	18-19.02.23	1	1	0	0		Road
		2.Angelek	337	350	Kandrian HC2	196	30	96	13.02.23	1	1	0	0		Road
		3.Arihi/Mimul	359	430	Aka HC	273	50	152	20-21.02.23	1	0	0	0		Road
		4.Au	407	279	Aka HC	381	77	200	17-18.02.23	1	1	0	0		Road
		5.Kisamolo	188	174	Aka HC	163	34	80	17-18.02.23	1	1	0	0		Road
		6.Lakungkung	272	459	Aka HC	426	80	221	17-18.02.23	1	1	0	0		Road
		7.Lapalam	275	306	Aka HC	274	49	133	19-20.02.23	1	1	0	0		Road
		8.Sinensi	285	336	Kandrian HC2	325	50	163	13.02.23	1	1	0	0		Road
		9.Angau	178	87	Aka HC	66	18	42	18-19.02.23	1	1	0	0		Road
		10.Simimla	80	162	Aka HC	148	29	79	17-18.02.23	1	1	0	0		Road
		11.Dinang	208	228	Aka HC	294	50	145	17-18.02.23	1	1	0	0		Road
		12.Wonu	124	316	Kandrian HC2	213	45	103	13.02.23	1	1	0	0		Road
		13.Pomang	64	210	Kandrian HC2	198	33	97	14.02.23	1	1	0	0		Road
		14.Asiku		139	Aka HC	107	22	58	20-21.02.23	1	0	0	0		Road
8	AMUMSONG		<b>1,292</b>	<b>1,834</b>		<b>1,770</b>	<b>303</b>	<b>855</b>		<b>8</b>	<b>8</b>	<b>0</b>	<b>0</b>		
		1.Amumsong	471	528	Kandrian HC2	707	100	340	14.02.23	1	1	0	0		Road
		2.Aure	119	185	Kandrian HC2	157	29	77	14.02.23	1	1	0	0		Road
		3.Pomugu	293	406	Kandrian HC2	257	47	123	14.02.23	1	1	0	0		Road
		4.Anumdu	74	87	Kandrian HC2	143	28	74	14.02.23	1	1	0	0		Road
		5.Kamalang	45	58	Kandrian HC2	126	32	60	14.02.23	1	1	0	0		Road
		6.Laromrom (Youkung)	85	133	Kandrian HC2	80	13	40	14.02.23	1	1	0	0		Road
		7.Akem	122	186	Kandrian HC2	143	28	68	14.02.23	1	1	0	0		Road
		8.Minalang	82	249	Kandrian HC2	157	26	73	14.02.23	1	1	0	0		Road
9	PALAN		<b>1,698</b>	<b>2,270</b>		<b>1,943</b>	<b>367</b>	<b>998</b>		<b>8</b>	<b>0</b>	<b>0</b>	<b>0</b>		
		1.Asiam	87	194	Aka HC	157	25	77	19-20.02.23	1	0	0	0		Road/Trek
		2.Amihak	416	487	Aka HC	406	85	219	20.02.23	1	0	0	0		Road/Trek
		3.Pomalal	273	133	Aka HC	177	34	84	19-20.02.23	1	0	0	0		Road/Trek
		4.Asahi	295	478	Aka HC	383	70	188	18-19.02.23	1	0	0	0		Road/Trek
		5.Sangkiap	171	243	Aka HC	261	46	122	17-18.02.23	1	0	0	0		Road/Trek
		6.Utkumbu	216	374	Aka HC	276	50	152	19.02.23	1	0	0	0		Road/Trek
		7.Womilo	240	166	Aka HC	123	25	69	19-20.02.23	1	0	0	0		Road/Trek
		8.Lavulus		195	Aka HC	160	32	87	19-20.02.23	1	0	0	0		Road/Trek
10	ASENGSENG		<b>969</b>	<b>1,234</b>		<b>1,035</b>	<b>190</b>	<b>526</b>		<b>5</b>	<b>0</b>	<b>0</b>	<b>0</b>		
		1.Karekded	87	214	Aka HC	104	21	55	18-19.02.23	1	0	0	0		Road/2Hr Trek
		2.Moi-ia (Amoia)	369	481	Aka HC	461	79	236	18-19.02.23	1	0	0	0		Road
		3.Pungual	124	209	Aka HC	205	45	102	18.02.23	1	0	0	0		Road/2Hr Trek
		4.Pomalngin	179	167	Aka HC										Abandone
		5.Awalngin	209	163	Aka HC	146	27	71	19-20.02.23	1	0	0	0		Road/3Hr Trek
		6.Awumit		NEW	Aka HC	119	18	62	18.02.23	1	0	0	0		Road
11	NGOLU		<b>1,063</b>	<b>1,644</b>		<b>1,204</b>	<b>220</b>	<b>651</b>		<b>6</b>	<b>0</b>	<b>0</b>	<b>0</b>		
		1.Hulem	379	359	Aka HC										Abandone
		2.lombon	345	499	Aka HC	314	57	169	17.02.23	1	0	0	0		Road
		3.Seiagit	84	159	Aka HC	153	33	84	17.02.23	1	0	0	0		Road/2Hr Trek
		4.Umbi	166	186	Aka HC	237	44	130	17.02.23	1	0	0	0		1 day
		5.Utkihu	89	275	Aka HC	210	34	108	17.02.23	1	0	0	0		Road/2Hr Trek
		6. Camp 14/14		166	Aka HC										Abandone
		7.Makambi		NEW	Aka HC	122	21	65	17.02.23	1	0	0	0		Road/2Hr Trek
		8.Asipaia		NEW	Aka HC	168	31	95	17.02.23	1	0	0	0		Road/2Hr Trek
<b>5.KOVE \ KALIAI RURAL</b>			<b>24,789</b>	<b>28,655</b>		<b>29,010</b>	<b>4,842</b>	<b>14,651</b>		<b>83</b>	<b>63</b>	<b>45</b>	<b>1,359</b>	<b>45</b>	
1	KAKOTA		<b>1,926</b>	<b>2,247</b>		<b>3,133</b>	<b>500</b>	<b>1,636</b>		<b>8</b>	<b>7</b>	<b>7</b>	<b>182</b>		
		7 1.Kou	625	710	Sasavoru HC	824	126	436	26.02.23	1	1	1	67	FM,AM	Boat/Road
		2.Talagone	342	415	Sasavoru HC	390	62	216	26.02.23	1	1	1	7	FM,AM	Boat
		3.Kandoka	588	608	Sasavoru HC	1,250	204	641	25.02.23	1	1	1	81	FM,AM	Boat
		4.Kapuluk	97	162	Sasavoru HC	149	22	77	26.02.23	1	1	1	3	FM,AM	Boat
		5.Ateate	127	232	Sasavoru HC	224	36	102	26.02.23	1	1	1	7	FM,AM	Boat
		6.Patamole	45	0	Sasavoru HC	172	22	91	25.02.23	1	1	1	12	FM,AM	Boat
		7.Lingalinga	101	120	Sasavoru HC					1					Included Under Patamole
		8. Balkens		NEW	Sasavoru HC	124	28	73	13.03.23	1	1	1	5	FM,AM	Boat/Vehicle

LLG	WARD	Village	Estimated 2022 Population Based on 2000 Census	2022 Population Estimated Based On 2019	Health Centre	Population Surveyed	House Holds Surveyed	Nets Issued	Date Of Distribution	Villages	Digicel	Bmobile	Houses With Radios	Radio Networks	Comments
<b>KANDRIAN \ GLOUCESTER</b>			<b>93,377</b>	<b>105,776</b>		<b>100,868</b>	<b>18,298</b>	<b>50,990</b>		<b>334</b>	<b>239</b>	<b>45</b>	<b>2,881</b>	<b>130</b>	
2	TALASEA		<b>2,097</b>	<b>2,316</b>		<b>2,141</b>	<b>325</b>	<b>1,051</b>		<b>7</b>	<b>5</b>	<b>5</b>	<b>212</b>		
	7	1.Kalapeai	344	303	Sasavoru HC	398	56	190	25.02.23	1	1	1	35	FM,AM	Boat
		2.Vese	287	321	Sasavoru HC	321	55	161	25.02.23	1	1	1	36	FM,AM	Boat
		3.Nusasi	161	158	Sasavoru HC	80	12	42	26.02.23	1	1	1	9	FM,AM	Boat
		4.Kaimeka	65	91	Sasavoru HC					1					Included Under Vesse
		5.Kamburi	194	426	Sasavoru HC	400	65	218	26.02.23	1	1	1	37	FM,AM	Boat
		6.Isu	89	75	Sasavoru HC					1					Included Under Kalapeai
		7.Silovuti Logging Camp	957	942	Sasavoru HC	942	137	440	27.02.23	1	1	1	95	FM,AM	Boat
3	POITALA		<b>1,599</b>	<b>2,102</b>		<b>1,868</b>	<b>335</b>	<b>1,082</b>		<b>8</b>	<b>8</b>	<b>8</b>	<b>229</b>		
	8	1.Poi	367	390	Sasavoru HC	406	57	169	24.02.23	1	1	1	40	FM,AM	Boat
		2.Kore	121	138	Sasavoru HC	207	33	104	25.02.23	1	1	1	29	FM,AM	Boat
		3.Meto	176	407	Sasavoru HC	102	60	196	25.02.23	1	1	1	44	FM,AM	Boat
		4.Moputu	352	488	Sasavoru HC	455	77	237	26.02.23	1	1	1	46	FM,AM	Boat
		5.Airipi	119	148	Sasavoru HC	174	29	97	25.02.23	1	1	1	20	FM,AM	Boat
		6.Makati	285	258	Sasavoru HC	217	37	122	26.02.23	1	1	1	23	FM,AM	Boat
		7.Muromuro	116	145	Sasavoru HC	160	20	80	26.02.23	1	1	1	12	FM,AM	Boat
		8.Sasavoru Mission	64	128	Sasavoru HC	147	22	77	25.02.23	1	1	1	15	FM,AM	Boat
4	KALMARUHI		<b>1,718</b>	<b>1,454</b>		<b>2,012</b>	<b>333</b>	<b>997</b>		<b>5</b>	<b>5</b>	<b>5</b>	<b>192</b>		
	4	1.Guhi/Kikiveai	825	827	Milimata HC	943	141	463	01.03.23	1	1	1	100	FM,AM	Boat
		Kikiveai		NEW	Milimata HC	52	10	23	02.03.23	1	1	1	4	FM,AM	Boat
		2.Rangih	220	375	Milimata HC	359	72	169	06.03.23	1	1	1	21	FM,AM	Boat
		3.Somalani	499	112	Milimata HC	481	81	250	01.03.23	1	1	1	49	FM,AM	Boat
		4.Vogevoge	174	140	Milimata HC	177	29	92	01.03.23	1	1	1	18	FM,AM	Boat
5	SISILI SAPULO		<b>1,632</b>	<b>2,005</b>		<b>1,855</b>	<b>355</b>	<b>896</b>		<b>9</b>	<b>9</b>	<b>9</b>	<b>232</b>		
	5	1.Muliagani	211	265	Milimata HC	230	37	103	02.03.23	1	1	1	32	FM,AM	Boat
		2.Nukakau	590	736	Milimata HC	637	124	313	02.03.23	1	1	1	61	FM,AM	Boat
		3.Vona/Milimata	275	267	Milimata HC	56	12	29	01.03.23	1	1	1	12	FM,AM	Boat
		4.Maiko	250	287	Milimata HC	271	50	130	02.03.23	1	1	1	50	FM,AM	Boat
		Cape Rudge		304	Milimata HC	152	32	78	01.03.23	1	1	1	23	FM,AM	Boat
		5.Pua/Makia	307	147	Milimata HC	152	33	78	02.03.23	1	1	1	33	FM,AM	Boat
		6.Mela		NEW	Milimata HC	162	30	76	01.03.23	1	1	1	20	FM,AM	Boat
		7.Moruku		NEW	Milimata HC	112	18	49	05.03.23	1	1	1	1	FM,AM	boat/trek
		8.Naru		NEW	Milimata HC	83	19	40	05.03.23	1	1	1	0	FM,AM	boat
6	MONGAMONGA		<b>2,546</b>	<b>3,054</b>		<b>2,576</b>	<b>444</b>	<b>1,316</b>		<b>6</b>	<b>6</b>	<b>6</b>	<b>311</b>		
	5	1.Kapo	865	855	Milimata HC	759	126	382	02.03.23	1	1	1	94	FM,AM	Boat
		2.Nukuhu	176	304	Milimata HC	226	45	111	02.03.23	1	1	1	42	FM,AM	Boat
		3.Tarawa	1,007	332	Milimata HC	340	66	173	04.03.23	1	1	1	58	FM,AM	Boat
		4.Nutanavua	275	1,031	Milimata HC	664	103	354	03.03.23	1	1	1	69	FM,AM	Boat
		5.Ahia/Mohea/Kakasi	223	418	Milimata HC	216	36	103	04.03.23	1	1	1	6	FM,AM	Boat
		6.Elieli Yawa		114	Milimata HC										Covered in Maen (Wd 7) under Kaliai HC
		7. Tapo		NEW	Milimata HC	371	68	193	04.03.23	1	1	1	42	FM,AM	Boat
7	AKIVILIK		<b>2,817</b>	<b>3,722</b>		<b>3,477</b>	<b>567</b>	<b>1,746</b>		<b>7</b>	<b>7</b>	<b>0</b>	<b>0</b>		
	7	1.Bolo	307	308	Kaliai HC	175	33	87	27.02.23	1	1	0	0		Boat/Road
		2.Denga	272	398	Kaliai HC	400	66	195	27.02.23	1	1	0	0		Boat
		3.Gogola	228	352	Kaliai HC	246	40	123	27.02.23	1	1	0	0		Boat/Road
		4.Kandoka	903	1,058	Kaliai HC	1,238	189	626	06.03.23	1	1	0	0		Boat
		5.Lauvove	615	784	Kaliai HC	668	105	342	27.02.23	1	1	0	0		Boat
		6.Maen	134	359	Kaliai HC	328	62	164	25.02.23	1	1	0	0		Boat
		7.Iboki Station	359	462	Kaliai HC	422	72	209	25.02.23	1	1	0	0		Boat
8	LUSI		<b>1,683</b>	<b>2,111</b>		<b>1,989</b>	<b>319</b>	<b>996</b>		<b>5</b>	<b>5</b>	<b>0</b>	<b>0</b>		
	5	1.Aitiatu (Gilau)	456	780	Kaliai HC	735	121	374	03.03.23	1	1	0	0		Boat
		2.Ketenge	690	697	Kaliai HC	693	100	329	01.03.23	1	1	0	0		Boat
		3.Taveliai	243	354	Kaliai HC	323	52	166	01.03.23	1	1	0	0		Boat
		4.Anuriai	265	233	Kaliai HC	201	37	106	01.03.23	1	1	0	0		Boat
		5.Kaliai Mission	28	47	Kaliai HC	37	9	21	07.03.23	1	1	0	0		Boat
9	ANEMSAHE		<b>1,671</b>	<b>2,488</b>		<b>2,475</b>	<b>408</b>	<b>1,201</b>		<b>5</b>	<b>5</b>	<b>0</b>	<b>0</b>		
	5	1.Arumigi	357	573	Kaliai HC	547	77	271	06.03.23	1	1	0	0		Boat
		2.Karaiai	246	323	Kaliai HC	490	83	234	06.03.23	1	1	0	0		Boat
		3.Pureiling	476	528	Kaliai HC	547	97	266	03.03.23	1	1	0	0		Boat
		4.Tamoniai	458	744	Kaliai HC	687	117	330	06.03.23	1	1	0	0		Boat
		5.Mosiliki	134	320	Kaliai HC	204	34	100	06.03.23	1	1	0	0		Boat
10	ARIA No 1		<b>1,218</b>	<b>1,325</b>		<b>1,356</b>	<b>238</b>	<b>694</b>		<b>6</b>	<b>0</b>	<b>0</b>	<b>0</b>		
	6	1.Bagai	176	289	Kaliai HC	251	43	134	24.02.23	1	0	0	0		Boat
		2.Rovos	199	308	Kaliai HC	301	48	157	24.02.23	1	0	0	0		Boat/Trek
		3.Tavele	131	118	Kaliai HC	133	29	71	24.02.23	1	0	0	0		Boat
		4.Matagiau	225	132	Kaliai HC	270	50	135	25.02.23	1	0	0	0		Boat/Trek
		5.Paravatne	151	245	Kaliai HC	192	31	97	24.02.23	1	0	0	0		Boat/Trek
		6.Aria Vanu Camp 2	337	232	Kaliai HC	209	37	100	24.02.23	1	0	0	0		Boat
11	ARIA No 2		<b>925</b>	<b>915</b>		<b>1,338</b>	<b>201</b>	<b>675</b>		<b>5</b>	<b>5</b>	<b>5</b>	<b>1</b>		
	5	1.Kwako	230	167	Milimata HC	215	32	115	21.02.23	1	1	1	0	FM,AM	Boat/Trek
		2.Talewaga	243	186	Milimata HC	420	50	214	21.02.23	1	1	1	1	FM,AM	Boat/Trek
		3.Opmadung	215	90	Milimata HC	186	31	90	21.02.23	1	1	1	0	FM,AM	Boat/Trek
		4.Gelei/Gaho	117	144	Milimata HC	242	38	117	21.02.23	1	1	1	0	FM,AM	Boat/Trek
		5.Balimu	121	329	Milimata HC	275	50	139	21.02.23	1	1	1	0	FM,AM	Boat/Trek
12	MOUK		<b>3,422</b>	<b>3,948</b>		<b>3,596</b>	<b>590</b>	<b>1,761</b>		<b>9</b>	<b>1</b>	<b>0</b>	<b>0</b>		
	8	1.Aikon/Popmu	444	910	Kaliai HC	741	90	358	08.03.23	1	0	0	0		Boat/Trek
		2.Angal/Botogoigoi	580	584	Kaliai HC	527	99	290	09.03.23	1	0	0	0		Boat/Trek
		3.Gigina	809	625	Kaliai HC	680	128	315	10.03.23	1	0	0	0		Boat/Trek
		4.Moluo	277	295	Kaliai HC	392	78	179	10.03.23	1	0	0	0		Boat/Trek
		5.Salkei	595	792	Kaliai HC	110	19	54	27.02.23	1	1	0	0		Boat/Trek
		6.Bogodiding/Benim2	183	100	Kaliai HC	104	14	53	15.03.23	1	0	0	0		Boat/Trek
		7.Dokosarga	196	405	Kaliai HC	246	54	116	10.03.23	1	0	0	0		Boat/Trek

LLG	WARD	Village	Estimated 2022 Population Based on 2000 Census	2022 Population Estimated Based On 2019	Health Centre	Population Surveyed	House Holds Surveyed	Nets Issued	Date Of Distribution	Villages	Digicel	Bmobile	Houses With Radios	Radio Networks	Comments
<b>KANDRIAN \ GLOUCESTER</b>			<b>93,377</b>	<b>105,776</b>		<b>100,868</b>	<b>18,298</b>	<b>50,990</b>		<b>334</b>	<b>239</b>	<b>45</b>	<b>2,881</b>	<b>130</b>	
		8.Karaekarunga	339	238	Kaliai HC	249	32	129	10.03.23	1	0	0	0		Boat/Trek
		Sarantu		NEW	Kaliai HC	547	76	267	02.03.23	1	0	0	0		Boat/Trek
13	LAMOGAI		<b>1,535</b>	<b>969</b>		<b>1,194</b>	<b>227</b>	<b>600</b>		<b>3</b>	<b>0</b>	<b>0</b>	<b>0</b>		
	4	1.Batauline	323	0	Kaliai HC										Abandoned
		2.Bulawatne	401	366	Kaliai HC	575	100	275	19.03.23	1	0	0	0		Boat/Road/Trek
		3.Mokukli	318	76	Kaliai HC	200	38	106	20.03.23	1	0	0	0		Boat/Road/Trek
		4.Maravo/Morou	493	527	Kaliai HC	419	89	219	20.03.23	1	0	0	0		Boat/Road/Trek