



QUARTER 1-2025 MONITORING & EVALUATION ON MALARIA PROGRAM AND DRUG DISTRIBUTION REPORT JIWAKA PROVINCE

Activities implemented in conjunction with the Jiwaka PHA staffs.
Funded by the Global Fund through the Rotarian Against Malaria.

16th of March to 4th of April 2025



Director Public Health and her Team presented a Jiwaka bilum to the RMC as an appreciation for the National Malaria Control Program implemented in Jiwaka Province during the Annual Review Meeting at Molka Lodge, Jiwaka.

Table of Contents:

Table of Contents.....2

Executive Summary3

Background of Jiwaka Province & Health Services in Jiwaka.....4

Aid Posts & Malaria Prevalence by Altitude & Malaria Prevalence Rate5

Purpose of Visit, Jiwaka PHA team met with & Type of Transport used.....6

Highlights of Q1-2025 visit.....7-8

Malaria Data Updates.....9-10

Health Facility visit Summary.....11

Update on Malaria Treatment Protocol in PNG, Achievements, Key Challenges, Recommendations12

Acknowledgement.....13

Photographs of Q1 visit.....14-15

EXECUTIVE SUMMARY

This was the 1st quarter visit of 2025. It was coincided with the 2024 Annual Review Meeting for Jiwaka PHA. The Jiwaka PHA formally invited the Regional Malaria Coordinator to attend this important review meeting which was a success for the first time in the last 4 years of implementing the National Malaria Control Program in Jiwaka. The review meeting was a 5-day long, which was detailed and very informative.

After the meeting, the actual quarter 1 visit began and we visited a total of 24 health facilities out of the 29 reporting health facilities of Jiwaka Province. This brings the accessible health facility coverage to 133.3% which was a great achievement for the Malaria Program. The balance of five facilities were air accessible, hence, were not physically visited, however, 1 facility (Koinambe HC) picked up its supplies from the PHO and the PHA arranged a PMV to deliver a bale of ANC LLIN successfully to Koinambe HC. The other 4 will pick up their supplies from the PHO.

There was **NO MAJOR STOCK OUT of ACTs, RDTs & PQ** in the 24 facilities visited.

The purpose of this visit is to;

- distribute mRDTs, ACTs, Primaquine tablets and Antenatal Long- lasting insecticidal Nets to all reporting health facilities,
- do active stock rotation of antimalarial from one health facility to another, i.e. from low consumption rate to high consumption rate,
- run continuous quality initiative trainings to health facility's OIC and staffs/trainees where needed,
- check on Health Facility Malaria Registers and Antenatal bed net registers & collect,
- stocktake on all malaria commodities at the health centres and replenish where necessary,
- monitor medical supply stock cards for mRDT, ACTs, Primaquine tablets and update,
- check on how well the malaria data is entered into the e-NHIS tablet and whether all sections under malaria is correctly reported,
- malaria data verification and validation through the use of Monthly Malaria Report against the raw data in the reporting tools at the facility,
- coach OICs on how to enter malaria data correctly and completely under malaria sections of the e-NHIS tablet
- make sure e-NHIS monthly reports are sent on time and
- make sure intermittent preventative treatment in pregnancy (Fansidar prophylaxis for antenatal women) is implemented and documented in the ANC Registration book.
- liaise with Remote Sensing Team to solve discrepancies found in the e-NHIS tablet with regards to Malaria Program and also the general use and function of the tablet.

The entire trip was a very successful and best!

BACKGROUND OF JIWAKA PROVINCE

Jiwaka is one of the provinces in the Highlands region of Papua New Guinea with mountains that rise up to over 3,600 meters. It is made up of three districts namely; North Waghi, Anglimp South Waghi and Jimmy. North Waghi and Anglimp South Waghi are situated in the valleys and parts in the mountains while Jimi District is the northern district that has a low lying valley which goes down to almost 400 meters in the West and rises to high altitude in the East. This is the district with high endemic malaria in Jiwaka Province. The provincial capital is temporarily located in Kurumul. The Jiwaka Provincial Health Headquarter is also in Kurumul.

The province covers an area of 4,798 km², and there are 343,987 inhabitants (2011 census). Jiwaka province officially came into being on 17 May 2012, comprising three districts previously part of Western Highlands Province.

Jiwaka is located in a very fertile land (Waghi Valley). The Waghi River runs between the valley and most of the people benefit out of it. Besides the Waghi River, the land is naturally fertile and people harvest the best food from it. The 3 resources of the Jiwaka people are coffee, tea and human resources.

Economy in the province is mainly generated through subsistence farming, piggery and poultry and Human Resource. Cash crops in the province are mainly coffee, tea and fresh vegetables.

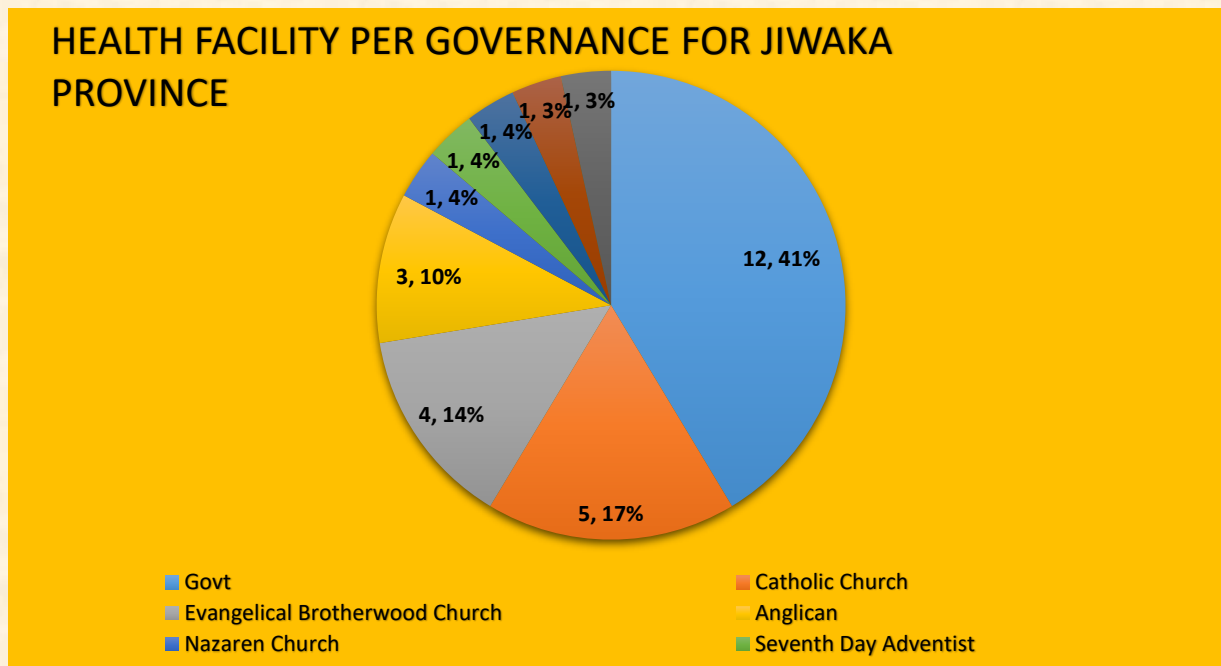
Infrastructure is slowly improving but in few selected local areas. It is deteriorating in most parts of the three districts. The road to Jimi District is extremely bad and risky in most parts, however, upgrading is recently done from Banz to Kol, which is a bit okay in good weather.

Malaria prevalence in the province depends on the altitude and movement of people. Local transmission is very high in Jimi District and along the mighty Waghi river where climate is generally warm. Other cases are imported by those who travel to and fro to coastal places for personal and business purposes.

HEALTH SERVICES IN JIWAKA

Jiwaka has a total of 29 reporting health facilities. Of the 29 reporting health facilities and as per the District, Jimi District has 9 reporting health facilities, North Waghi has 8 and Anglimp South Waghi has 12. Twenty-four (24) out of the 29 health facilities are accessible by road while the 4 in Jimi and 1 in Anglimp South Waghi are air accessible. It is governed by both the Jiwaka Provincial Health Authority(Government) and Church Agencies.

Graph 1. shows the breakup of the 29 reporting health facilities per governance.



AID POSTS

Jiwaka has 89 Aid Posts of which 8 are inactive while the 81 are active or functioning.

From observations, data analyses and interrogation with the OICs of reporting health facilities, most of the monthly reports from Aid Posts reach them late after submission of reports. One of the way forwards to capture all reports is to further introduce e-NHIS tablet to Community Health Posts and Aid Posts.

MALARIA PREVALENCE BY ALTITUDE

Malaria prevalence in the province depends on the altitude and movement of people. Local transmission is very high in Jimi District and along the mighty Waghi river where climate is generally warm. Other cases are imported by those who travel to and fro to coastal places for personal and business purposes.

Figure 1. Shows the sketch of 3 Districts for Jiwaka Province.

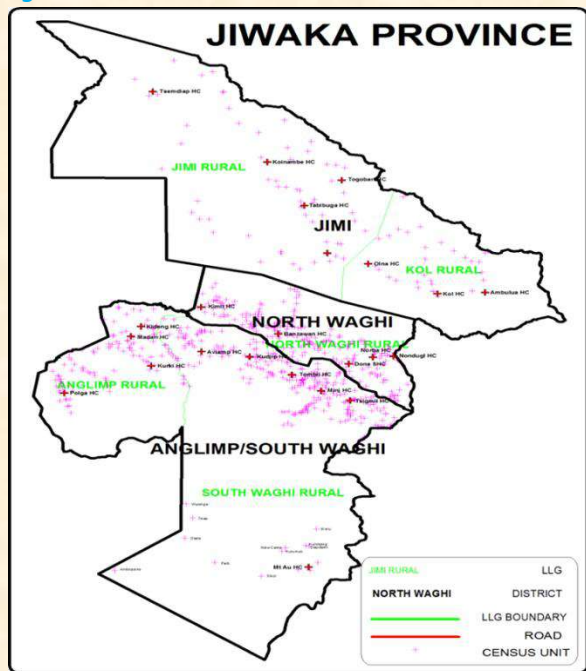
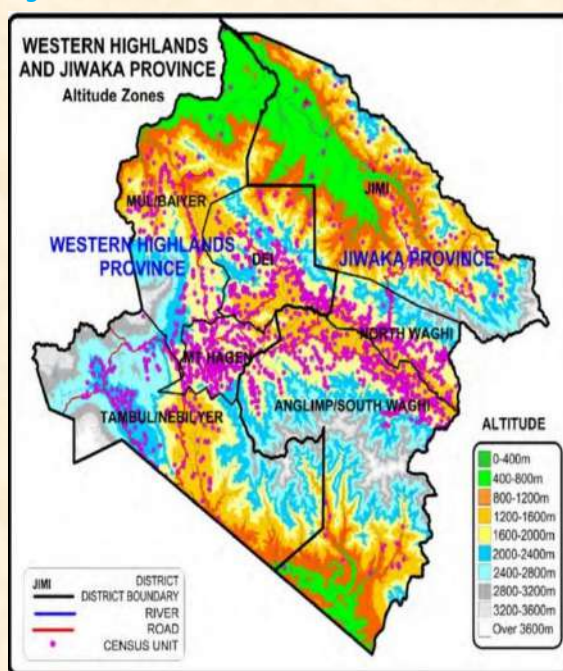
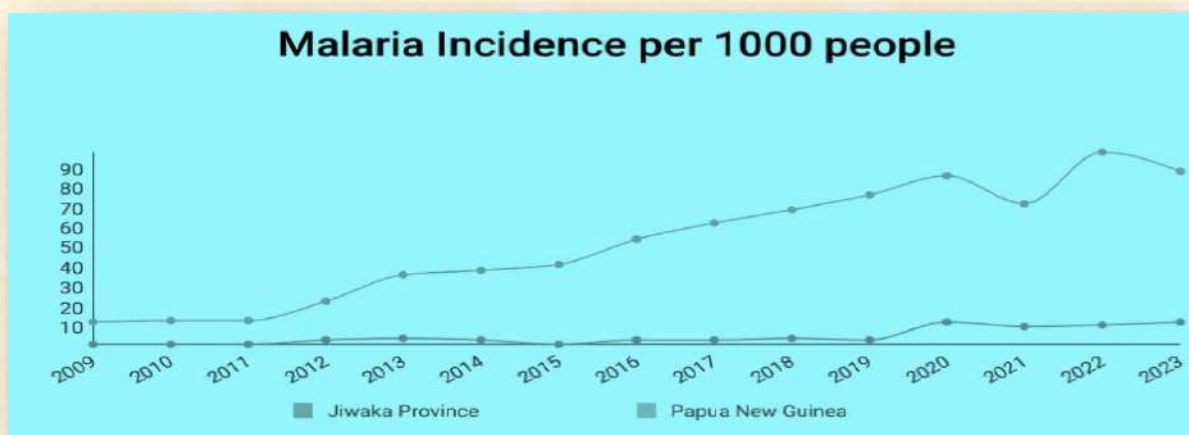


Figure 2. Shows the altitude zone for Jiwaka & WHP.



Graph 2. Malaria prevalence rate for Jiwaka Province compared to the rest of PNG from 2009-2023.



Source: e-NHIS Jiwaka Province Health Indicators.

PURPOSE OF VISIT

The purpose of this visit is to;

- distribute mRDTs, ACTs, Primaquine tablets and Antenatal Long- lasting insecticidal Nets to all reporting health facilities,
- do active stock rotation of antimalarial from one health facility to another, i.e. from low consumption rate to high consumption rate,
- run continuous quality initiative trainings to health facility's OIC and staffs/trainees where needed,
- check on Health Facility Malaria Registers and Antenatal bed net registers & collect,
- stocktake on all malaria commodities at the health centres and replenish where necessary,
- monitor medical supply stock cards for mRDT, ACTs, Primaquine tablets and update,
- check on how well the malaria data is entered into the e-NHIS tablet and whether all sections under malaria is correctly reported,
- malaria data verification and validation through the use of Monthly Malaria Report against the raw data in the reporting tools at the facility,
- coach OICs on how to enter malaria data correctly and completely under malaria sections of the e-NHIS tablet
- make sure e-NHIS monthly reports are sent on time and
- make sure intermittent preventative treatment in pregnancy (Fansidar prophylaxis for antenatal women) is implemented and documented in the ANC Registration book.
- liaise with Remote Sensing Team to solve discrepancies found in the e-NHIS tablet with regards to Malaria Program and also the general use and function of the tablet.

Table 1. Jiwaka PHA team met with:

NAMES	POSITION	PHONE DIGITS	EMAIL ADDRESS
Mr. Thaddeus Turi	Chief Executive Officer	79301096	thaddeus.turi@gmail.com
Dr. Marie Aska	Director Curative Health	71453829	marieaska@gmail.com
Sr. Kolly Bang	Director of Public Health	72464470	kollynhm@gmail.com
Mr. Joseph Mombo	Deputy Director Public Health	72360932/79238760	
Mr. Donald Teveko	Deputy Director District Health Services	71555143	donaldteveko44@gmail.com
Mr. Paul Opung	PHIO	72491835	popung.02@gmail.com
Mr. John Bak	Provincial Malaria Supervisor	73784181	jbakonapms@gmail.com
Mr. Albert Apal	Surveillance Officer	71826231	albert.apal22@gmail.com
Mr. Bosh Alah	Malaria Eradication Officer	79410079	alahbosh39@gmail.com

Table 2. Type of transport used:

Vehicle	Malaria Program Vehicle
Vehicle Used	LBW 882
Color	RAM Color-Blue yellow
Type	Toyota Land Cruiser 10 seater
Registration Validity	26.04.2025

Safety Sticker Validity	24.07.25
Duration of use	15 Days
Driver	Jack Bak–Jiwaka Local Driver
Contact	70701833

HIGHLIGHTS OF Q1- 2025 RMC's VISIT:

1. Attended 2024 Annual Review Meeting for Jiwaka PHA.

The Regional Malaria Coordinator was formally invited to attend the 2024 Annual Review Meeting which was coincided with the 1st quarter visit. It was a 5-day meeting in which all the other Partners were also invited and we had a very detailed and informative presentations all throughout. The RMC presented on the National Malaria Program on the first day of the meeting with the best results on the Malaria indicators. Team Jiwaka PHA truly appreciate the great work done in Jiwaka and commit to take on the recommendations and take ownership of the Program.

2. Health Facility Visits Summary for Quarter 1-2025.

Out of the 29 reporting health facilities, we visited a total of 24 facilities. Five (5) facilities are air accessible, hence, were not physically visited, however 1 facility (Koinambe HC) collected it's supplies from the PHO while 4 are advised to collect their supplies from the PHO.

Table 3. shows the summary of Q1 visit.

	Qtr. 1
Total number HFs	29
Total Number Accessible	18
Total Number Reached	24
% Coverage (Accessible)	133.3
% Coverage (Total HFs)	82.8

3. Drug stock out situation:

There were no major stock outs of mRDTs, ACTs & PQ in the 24 Health Facilities visited.

4. Total mRDTs, ACTs & PQ distributed during Q1 visit:

Table 4. Shows the total malaria commodities supplied to Jiwakas' health facilities during the 1st quarter visit.

Year	Quarter	Malaria RDT Kits	ACTs(blisters)	Primaquine Tablets
2025	1	8575 test kits	2940 blisters	22 500 tablets

5. Update of Antenatal Long Lasting Insecticidal Nets.

Jiwaka PHA had a buffer stock of 2000 nets (40 bales) rolled over from 2024. RAM Logistics supplied new stocks of 50 bales(2500 nets) on the 18th of March 2025 which added up to 90 bales(4500 nets). Out of the 4500 nets, 2100 nets were distributed to health facilities during the 1st quarter visit. The balance of 2400 nets are stored as the buffer and will be distributed where needed and in the next quarter visits.

Table 5. Shows the ANC LLIN distribution to health facilities in Jiwaka Province.

DATE	DELIVERY TO HEALTH CENTRE	PERSON RECEIVING GOODS	OFFICER SUPPLYING NETS	DOCUMENTATION NO.	STOCK IN	STOCK OUT	BALANCE	COMMENTS
18.12.24	Jiwaka PHA Malaria	John Bak(PMS) & Bosh Alah(MEO)	Agatha Gola-RMC		2000		2000	Buffer Stock left in the stoage container at Jiwaka PHA yard.
27.01.25	Fatima HSC	Samuel-MLT	Bosh Alah-MEO	40106		50	1950	Issued by MEO upon HF visit.
27.01.25	Dona HSC	Miriam Mond-N/O	Bosh Alah-MEO	40107		50	1900	Issued by MEO upon HF visit.
28.01.25	Nondugl HC	Theresia Wik - Malaria Officer	Bosh Alah-MEO	40108		50	1850	Issued by MEO upon HF visit.
31.01.25	Kudjip Nazaren Hospi	Sr. Leah-OIC	Bosh Alah-MEO	40109		300	1550	Issued by MEO upon HF visit.
5.02.25	Polga HSC	Olivia Jeffrey - CHW	Bosh Alah-MEO	40110		50	1500	Issued by MEO upon HF visit.
13.02.25	Kindeng HC	Jack Wambi - SIC	Bosh Alah-MEO	40111		100	1400	Issued by MEO.
13.02.25	Nondugl HC	Theresia Wik - Malaria Officer	Bosh Alah-MEO	40113		50	1350	Issued by MEO.
10.03.25	Fatima HSC	Fabian Ken - CHW	Bosh Alah-MEO	40114		50	1300	Issued by MEO.
10.03.25	Banz Day 2 Urban Clin	Dorcas Kande - N/O	Bosh Alah-MEO	40115		50	1250	Issued by MEO.
10.03.25	Banz Day 1 Clinic	Delma Taima - Midwife	Bosh Alah-MEO	40116		50	1200	Issued by MEO.
10.03.25	Norba HSC	Raphael Eling -N/O	Bosh Alah-MEO	40117		50	1150	Issued by MEO.
18.03.25	Jiwaka PHA Malaria	John Bak(PMS) & Bosh Alah(MEO)	Kila Tom-RAM Logistics	68721	2500		3650	Issued by MEO.
24.03.25	Tombil HSC	David Umba - CHW FHS	Agatha Gola-RMC	40118		50	3600	Issued by RMC & MEO upon HF visit
25.03.25	Kurkur Koim CHP	Darita Culligan - N/O	Agatha Gola-RMC	40119		50	3550	Issued by RMC & MEO upon HF visit
25.03.25	Polga HSC	Grace Kopon - CHW	Agatha Gola-RMC	40120		50	3500	Issued by RMC & MEO upon HF visit
26.03.25	Madan CHP	Susan Koim -OIC	Agatha Gola-RMC	40121		50	3450	Issued by RMC & MEO upon HF visit
26.03.25	Kindeng HC	Jack Wambi - SIC	Agatha Gola-RMC	40122		100	3350	Issued by RMC & MEO upon HF visit
27.03.25	Ambullua HC	Samuel Kulame - OIC	Agatha Gola-RMC	40123		50	3300	Issued by RMC & MEO upon HF visit
27.03.25	Fatima HSC	Thomas John - OIC	Agatha Gola-RMC	40124		100	3200	Issued by RMC & MEO upon HF visit
27.03.25	Banz Day 2 Urban Clin	Pauline Buka - CHW	Agatha Gola-RMC	40125		50	3150	Issued by RMC & MEO upon HF visit
28.03.25	Kurki HSC	Cynthia Kay - A/OIC	Agatha Gola-RMC	40126		50	3100	Issued by RMC & MEO upon HF visit
31.03.25	Tsigmil HC	Job Kaike - CHW	Bosh Alah-MEO	40127		50	3050	Issued by RMC & MEO upon HF visit
1.04.25	Dona HSC	Doris Kerenge - CHW	Bosh Alah-MEO	40128		50	3000	Issued by RMC & MEO upon HF visit
1.04.25	Nondugl HC	Theresia Wik - Malaria Officer	Bosh Alah-MEO	40129		100	2900	Issued by RMC & MEO upon HF visit
2.04.25	Kumbants HSC	Ruth M - OIC	Agatha Gola-RMC	40130		50	2850	Issued by RMC & MEO upon HF visit
2.04.25	Waramants HSC	Priscilla Dhu - CHW	Bosh Alah-MEO	40131		50	2800	Issued by RMC & MEO upon HF visit
2.04.25	Olna HSC	Maureen Amp - OIC	Agatha Gola-RMC	40132		50	2750	Issued by RMC & MEO upon HF visit
2.04.25	Tabibuga HC	Abel Owen - Malaria Officer	Agatha Gola-RMC	40133		50	2700	Issued by RMC & MEO upon HF visit
3.04.25	Koinambe HC	Kapan Bongma - CHW	Bosh Alah-MEO	40134		50	2650	Issued by RMC & MEO at the PHO
3.04.25	Banz Day 1 Clinic	Delma Taima - Midwife	Bosh Alah-MEO	40135		50	2600	Issued by RMC & MEO upon HF visit
3.04.25	CLTC Clinic	Wanure Susuke - OIC	Bosh Alah-MEO	40136		50	2550	Issued by RMC & MEO upon HF visit
7.04.25	Kudjip Nazaren Hospi	Sr. Charity B. - SIC	Bosh Alah-MEO	40137		150	2400	Issued by MEO upon HF visit.
							2400	Q1-2025 Buffer stock
	TOTAL NETS DELIVERED TO HEALTH FACILITIES				4500	2100	2400	

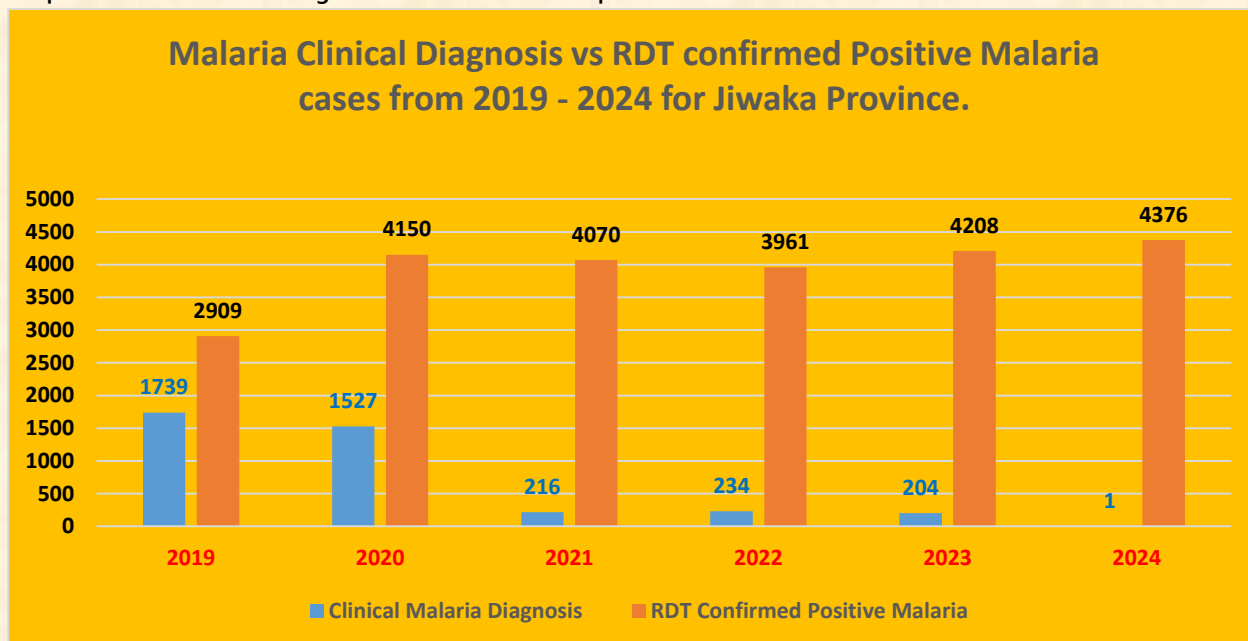
6. Malaria Stock Update.

The RDTs, ACTs & Primaquine that were used for the distributions were from the Q4-2024 buffer stocks and additional Q1 supplies from AMS/HAGEN (NDOH stocks).

	mRDT kits	ACT 6	ACT 12	ACT 18	ACT 24	PQ
Q4-24 Buffer Stocks	2125 kits	270 blisters	510 blisters	0 blisters	540 blisters	26 800 tablets
Batch #	75L35235	3E02O47	B1APH004		HWE114003	KE24147
Exp Date	Nov-25	Dec-25	Oct-25		Dec-26	Feb-27
	mRDT kits	ACT 6	ACT 12	ACT 18	ACT 24	PQ
AMS/NDOH Stock	8750 kits	30 blisters	720 blisters	270 blisters	1440 blisters	0 tablets
Batch #	H006C005D	3E01046	B1APH004	B1APH017	B1APH019	
Exp Date	May-25	Dec-25	Oct-25	May-25	Nov-25	

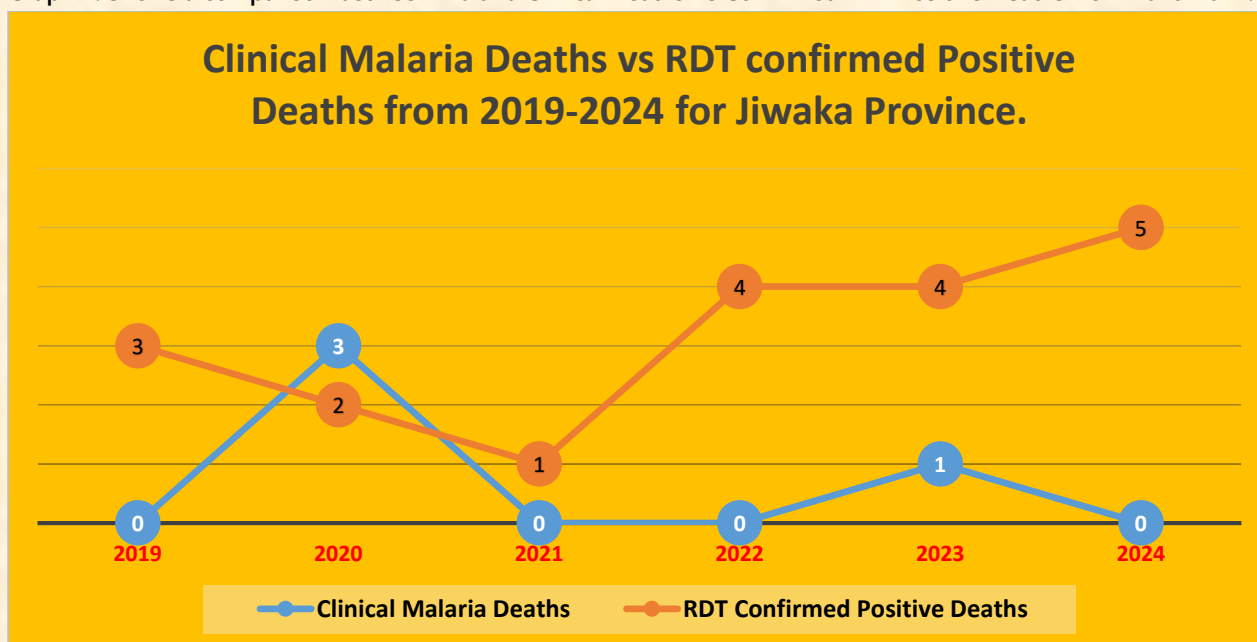
MALARIA DATA UPDATES.

Graph 3. Malaria Clinical Diagnosis Vs Confirmed RDT positive Malaria Cases.



Source: e-NHIS Malaria Monthly Reports.

Graph 4. Shows a comparison between Malaria Clinical Deaths Vs Confirmed RDT Positive Deaths from 2020-2024.

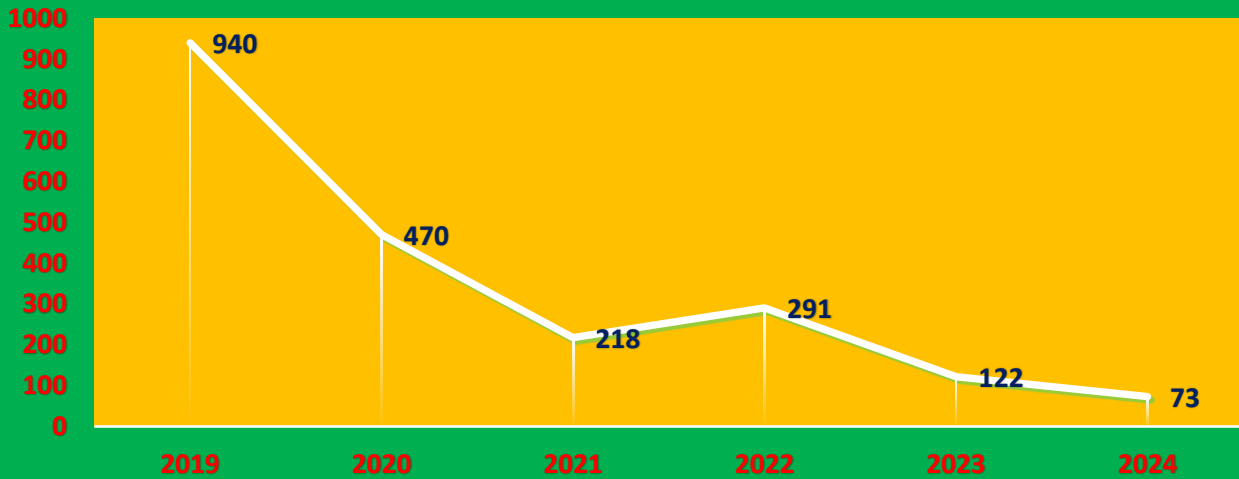


Source: e-NHIS Malaria Monthly Reports.

Graph 5. Projects the Malaria Microscopy Data from 2020 – 2024.



Total malaria slides examined from 2019 - 2024 for Jiwaka Province.



Source: e-NHIS Malaria Monthly Reports.

Table 6. Health Facilities visited, findings & observations and activities implemented.

#	District	Health Facility	Date of visit	e-NHIS Monthly Report	IPTP(Fansidar Prophylaxis)	Medical Supply Stock Cards	ANC LLIN Accountability	Activities done
1	Anglimp South Waghi	Tombil HSC	24.03.25	Using e-NHIS tablet	yes	Well maintained	100%	Physically visited, stock take and replenished. CQI training done.
2	Anglimp South Waghi	Kurkur Koim CHP	25.03.25	Using e-NHIS tablet	yes	Issued new MSSCs and trained the Dispenser on how to update & maintain.	96%	Physically visited, stock take and replenished. CQI training done.
3	Anglimp South Waghi	Polga HSC	25.03.25	Using e-NHIS tablet	yes	Well updated & maintained.	94%	Stocktake done and replenished.
4	Anglimp South Waghi	Madan CHP	26.03.25	Using e-NHIS tablet	yes	Well maintained	100%	Physically visited, stock take and replenished. CQI training done.
5	Anglimp South Waghi	Kindeng HC	26.03.25	Using e-NHIS tablet	yes	Well maintained	100%	Stocktake done and replenished.
6	Anglimp South Waghi	Ketepam HSC	26.03.25	Still using the manual NHIS reporting form despite having the tablet available. The reason being is that there's no electricity to charge the tablet.	yes, excellent recording of IpTp.	Occasionally updated.	100%	Stocktake done and replenished.
7	North Waghi	Kimil HC	27.03.25	Using e-NHIS tablet	yes	Used to be well maintained before by the former OIC. Not updated recently with the new a/OIC. Trained him to update.		Stocktake done and replenished. Trained the A/OIC on how to update and maintain Medical supply stock cards. Also warn him not to divert or misuse ACTs because he went and got supplies from the PHO 3 times recently but there's no good accountability as per the Malaria registers.
8	North Waghi	Fatima HSC	27.03.25	Using e-NHIS tablet	yes	Occasionally updated.	100%	Stocktake done and replenished. Trained ANC staffs and OIC on how to register IPTP in the A3 ANC Register book.
9	Anglimp South Waghi	Aviamp HSC	27.03.25	Using e-NHIS tablet	yes	Well maintained	100%	Stocktake done and replenished.
10	North Waghi	Banz Day 2 Clinic	27.03.25	Using e-NHIS tablet	yes	Occasionally updated.	96%	Stocktake done and replenished.
11	Anglimp South Waghi	Kurki HSC	28.03.25	Using e-NHIS tablet	yes. Unable to register as they're using the old pink register book.	Occasionally updated.	100%	Stocktake done and replenished. Trained the new OIC on how update & maintain the Medical supply stock cards.
12	Anglimp South Waghi	Tsigmil HC	31.03.25	Using e-NHIS tablet	yes, excellent recording of IpTp.	Occasionally updated.	100%	Stocktake and replenished.
13	Anglimp South Waghi	Minj HC	31.03.25	Using e-NHIS tablet	yes	Occasionally updated.	Very poor accountability of nets.	Stocktake and replenished.
14	Anglimp South Waghi	Minjmu CHP	31.03.25	Not yet coded. Reporting under Minj HC.	yes, excellent recording of IpTp.	Occasionally updated.	100%	Stocktake and replenished.
15	North Waghi	Nondugl HC	1.04.25	Using e-NHIS tablet	yes, inconsistent in registration.	Occasionally updated.	100%	Stocktake and replenished.
16	North Waghi	Norba HSC	1.04.25	Using e-NHIS tablet	yes, inconsistent in registration.	Occasionally updated.	100%	Stocktake and replenished.
17	North Waghi	Dona HSC	1.04.25	Using e-NHIS tablet	yes.	Occasionally updated.	100%	Stocktake done and replenished.
18	Jimi	Kumbants HSC	2.04.25	Using e-NHIS tablet	yes, unable to register as they're still using the old pink registration book.	Well updated & maintained.	100%	Stocktake done and replenished.
19	Jimi	Tabibuga HC	2.04.25	Using e-NHIS tablet	yes, excellent recording of IpTp.	mss Cards misplaced. Advised staffs to locate it and update.	Very poor accountability of nets.	Stocktake done and replenished.
20	Jimi	Waramants HSC	2.04.25	Using e-NHIS tablet	yes.	Occasionally updated.	100%	Stocktake done and replenished.
21	Jimi	Olna HSC	2.04.25	Using e-NHIS tablet	yes. Trained the OIC on how to record IPTP.	Occasionally updated. Trained the OIC and her staff on how to update.	100%	Stocktake done and replenished.
22	North Waghi	Banz Day 1 Clinic	3.04.25	Using e-NHIS tablet	yes.	Excellent updated and maintained.	100%	Stocktake done and replenished.
23	North Waghi	CLTC Clinic	3.04.25	Using e-NHIS tablet	yes.	Occasionally updated.	100%	Stocktake done and replenished.
24	Anglimp South Waghi	Kudjip Nazaren Hospital	7.04.25	Using e-NHIS tablet	yes, excellent recording of IpTp.	Well updated & maintained.	100%	Stocktake done and replenished.
25	Jimi	Koinambe HC	1.04.25	Using e-NHIS tablet	yes	Not yet introduced	to be assessed in Q2.	Not physically visited, however, packed Q1 drugs and bale net and was picked up by the OIC. PHA refueled a PMV vehicle and it transported the bale net successfully to Koinambe HC.
26	Jimi	Togban HSC	air accessible	Using e-NHIS tablet	yes	yet to introduce	receipts yet to be submitted.	Q1 Drug supplies to be picked up from PHO.
27	Jimi	Tsendiap HSC	air accessible	Using e-NHIS tablet	yes	yet to introduce		Q1 Drug supplies to be picked up from PHO.
28	Jimi	Ambullua HC	air accessible	Using e-NHIS tablet	yes	yet to introduce		Q1 Drug supplies to be picked up from PHO.
29	Jimi	Kol HC	inaccessible	Using e-NHIS tablet	yes	yet to assess	to be assessed in Q2.	Kina Toea bridge between Kol HC & Waramants HSC collapsed so couldn't visit.
30	Anglimp South Waghi	Mt. Au HSC	air accessible	Using e-NHIS tablet	yes	yet to introduce		Q1 Drug supplies to be picked up from PHO.

UPDATE ON MALARIA TREATMENT PROTOCOL FOR PNG

- ✓ Single dose Primaquine for positive Pf cases is implemented.
- ✓ 14-day Primaquine after completion of ACT for Non-Pf & Mixed Infections is implemented.
- ✓ ACT in first trimester is disseminated to OICs and staffs. However, most of them requested for a formal circular from the NMCP-NDOH to confirm and implement.
- ✓ Well versed with the administration of Artemether 40mg & 80mg.
- ✓ Many staffs are now using Artesunate 60mg injection for severe positive malaria cases after several onsite trainings on how to dilute and administer for both intramuscular and intravenous. Trainings will continue for the benefit of all other new staffs and trainees.
- ✓ 3 doses of fansidar for Antenatal women is implemented and documented in the A3 size ANC Register Book.
- ✓ Doxycycline prophylaxis for inbound travelers is disseminated. However, as mentioned by staffs, not many people seek for prophylaxis. People just travel and only visit health facilities when they feel ill.
- ✓ Staffs are aware of the 2nd line treatment of Malaria, however, most of them are not using as they don't have case that require 2nd line treatment and
- ✓ the contra-indications of Primaquine tablet is disseminated and staffs are aware of these.

ACHIEVEMENTS

1. Visited >100% accessible Health Facility coverage.
2. Attended the 2024 Annual Review Meeting and presented on the National Malaria Control Program.
3. NO MAJOR STOCK OUT of ANTIMALARIALS in the 24 health facilities visited.
4. Visited 4 Health Facilities in Jimi.
5. **Only 1 Clinical Malaria Diagnosis done in 2024!**

KEY CHALLENGES

Health Facility Visits

- ✓ Medical supply stock cards not updated in some facilities.
- ✓ Poor accountability of RDTs, ACTs & Primaquine in some health facilities.
- ✓ Malaria RDT registers not fully entered into the e-NHIS monthly report
- ✓ Few health facilities have issues with accountability of Antenatal Long-Lasting Insecticidal Nets.
- ✓ Few health Facilities still using the old pink ANC Register book, hence, unable to record the IpTp.

RECOMMENDATIONS

PHA

1. Jiwaka PHA to train more microscopists, purchase some microscope and place them in facilities in Jimi as well as others to improve on the Malaria Microscopy data.
2. Jiwaka PHA to take full ownership of the program in the 2nd quarter visit and onwards.
3. PMS and MEO to improve on documentation of drugs issued to Health Facilities and maintain very good databases.

RMC

1. Continue to train the MEO on the Malaria databases.
2. Continue working with the PHIO, PDCO and the MEO to improve Malaria Data.
3. Continue CQI trainings to the District Health Facilities.

ACKNOWLEDGEMENT

I would like to sincerely thank the following important people, Departmental heads, organization and business sectors for making this trip a success. My word of gratitude to the;

1. Nation Department of Health – National Malaria Control Program.
2. Rotary Against Malaria – Regional Malaria Coordinator Program.
3. Jiwaka Provincial Health Authority Team.
4. All the staffs of the 24 reporting Health Facilities of Jiwaka
5. The Jiwaka local driver, Mr. Jack Bak for safe driving.

Cheers to everyone in the Fight Against Malaria!

Field Trip Report compiled by;

Ms. AGATHA GOLLA – Regional Malaria Coordinator for Jiwaka Province.

PHOTOGRAPHS OF Q1-2025 VISIT:



RMC was appointed to present Health Facility awards to The Jimi District Health Facilities.



The Director Public Health and her team appreciated the RMC's performance in the Malaria Program and presented a bilum as a gift to the RMC during the review meeting.



The Director Curative Health, Dr. Marie Aska appreciated the RMC's performance in the Malaria Program and presented a bilum as a gift to the RMC during the review meeting.



RMC conducted CQI Training to the staffs of Madan CHP.



RMC conducted CQI Training to the OIC & staff of Olua HSC in Jimi District.



MEO and Malaria staff doing stock take on Antimalarial at Polga HSC.



PHIO, Mr. Paul Opung presented on Data during the review Meeting.